

Induction Session

Resource Management Department



Supporting and enabling operations by leading performance management and safeguarding resources to improve the lives of the people we serve

OUR TEAM



Manoj Juneja
Assistant Executive Director
for RM and CFO



Erika Joergensen
Budget & Programming (RMB)



Nicholas Nelson
Finance & Treasury (RMF)



Philip Ward
Management Services (RMM)



Jane Pearce
Performance Management
& Monitoring (RMP)



Christophe Boutonnier
Security (RMQ)



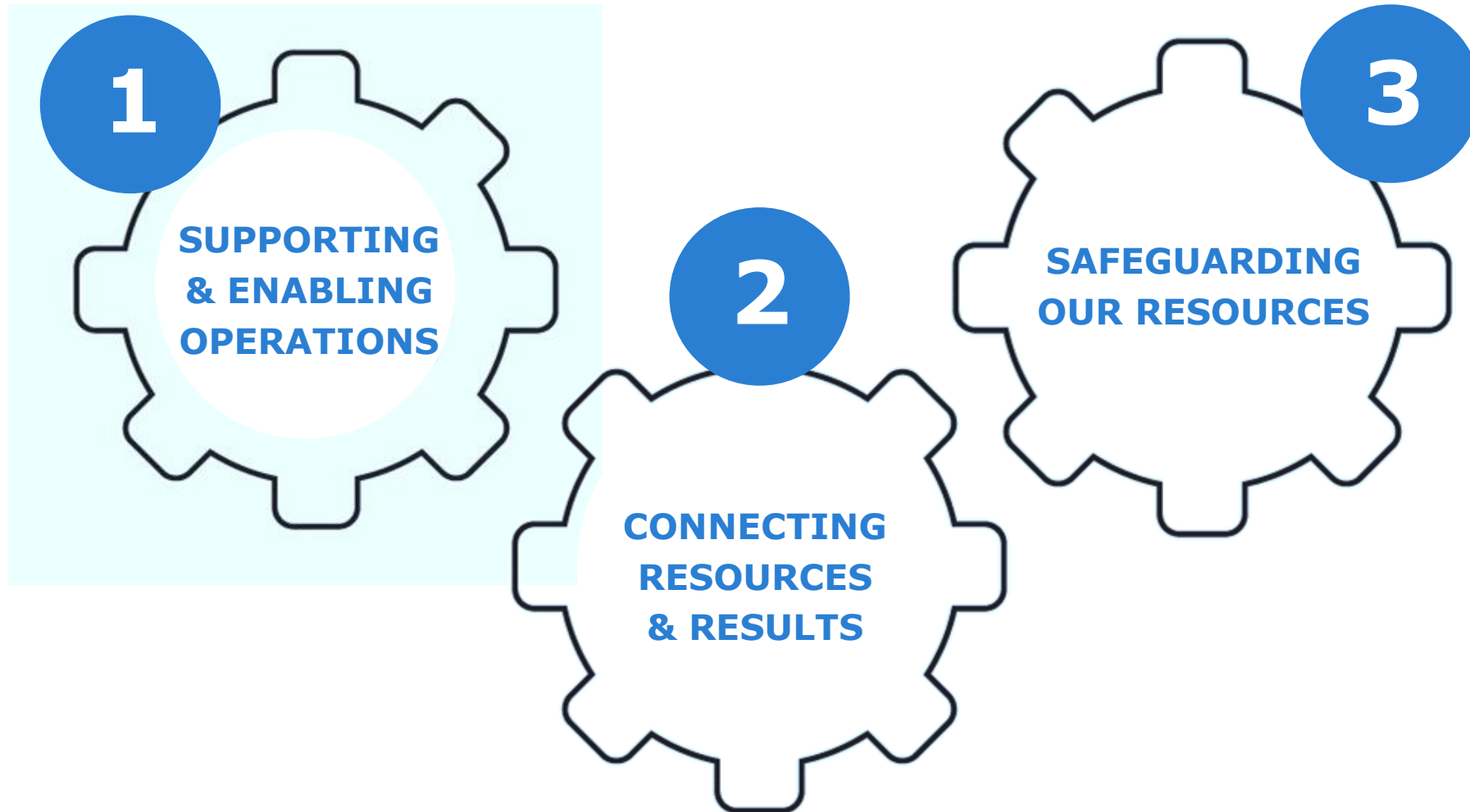
Sergio Arena
Staff Wellness (RMW)



Enterprise Risk
Management (RMR)

WHAT WE DO

3 Key Thematic Areas



SUPPORTING & ENABLING OPERATIONS

Looking after our people



Christophe Boutonnier

Security
(RMQ)



Sergio Arena

Staff Wellness
(RMW)



Philip Ward

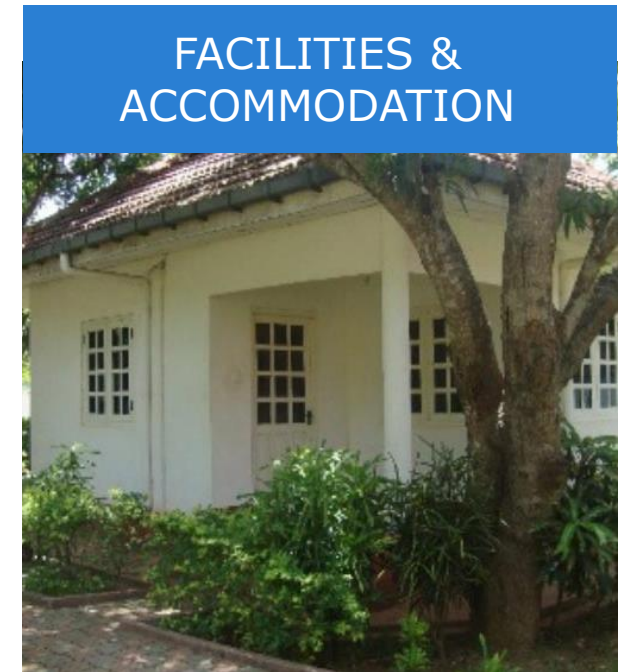
Management Services
(RMM)



SSAFE Security Training



Vaccination Campaign in South Sudan



Upgrade of accommodation

SUPPORTING & ENABLING OPERATIONS

Innovative Financial Tools



Erika Joergensen
Budget & Programming (RMB)



Nicholas Nelson
Finance & Treasury (RMF)



Internal Project Lending and Macro-Advance Financing



Immediate Response Account



Global Commodity Management Facility



Cash-Based Transfers

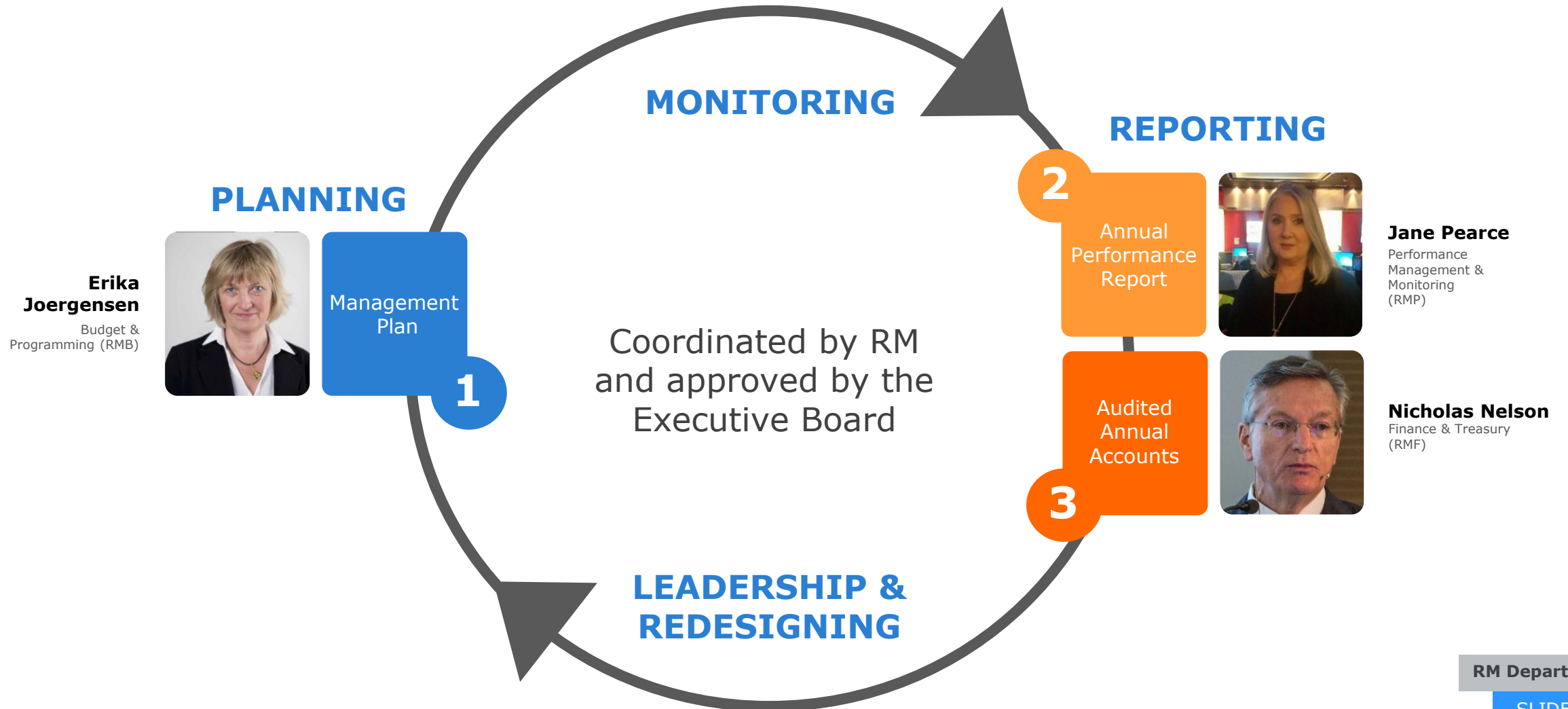
CONNECTING RESOURCES & RESULTS

Did you know that WFP has a committee to advise management on the use of multilateral resources?

It is the Strategic Resource Allocation Committee (SRAC)

CONNECTING RESOURCES AND RESULTS

The 3 Key RM-related EB Documents



SAFEGUARDING OUR RESOURCES

Strengthening assurance and controls



Enterprise Risk Management & Internal Controls



Global Asset Management



Financial Risk Management & Cash Management

Cost Efficiency Lens



9.5 M

Savings on CO FX transactions performed by HQ



35 M

Through Cost Excellence consisting of travel, assets, vehicle etc.



The background of the slide is a photograph of a solar farm. In the foreground, there are several rows of blue solar panels mounted on metal frames. In the background, a tall, thin wind turbine stands against a clear blue sky with some light clouds. The ground is dry and brown. A large black triangle is overlaid on the right side of the image, containing the title and text.

Treading lightly on the earth

A sound environmental policy and systems that consistently manage environmental risks and improve environmental outcomes will better equip WFP to help achieve the SDGs and end hunger.

KEY RM DATES AND DOCUMENTS

2017

3 October	Third Informal Consultation on the Management Plan (2019-2021)
5-6-7 November	FAO Finance Committee on WFP matters
13- 17 November	Second Regular Session of the Executive Board (incl. Management Plan approval)

2018

19 January	Resource Management Seminar
26 February – 2 March	First Regular Session of the Executive Board
10 April	Resource Management Seminar on EB.A/2018 items (incl. discussions on the Annual Performance Report + Audited Annual Accounts + Management Plan)
09 May	Briefing on the Management Plan (2019-2021)
29-31 May	FAO Finance Committee on WFP matters
12-16 June	Annual Session of the Executive Board (incl. Audited Annual Accounts and Annual Performance Report approval)
06 July	First Informal Consultation on the Management Plan (2019-2021)
7 September	Second Informal Consultation on the Management Plan (2019-2021)

First Regular Session (26 Feb – 2 Mar)

- Addendum to the WFP Management Plan (2019-2021) – Use of the PSA Equalization Account
- Report by the Joint Inspection Unit Relevant to the Work of WFP

Annual Session (12-16 June)

- Annual Performance Report
- Audited Annual Accounts (2017)
- WFP Security Report
- Report on the Utilization of WFP's Advance Financing Mechanisms
- Report on the Utilization of Contributions and Waivers of Costs

Second Regular Session (19-23 November)

- WFP Management Plan



1.2M MT

GMCF

Food purchased through the facility



\$636 M

Physical Assets

tracked and managed



\$4.6 B

Central Treasury cash outflows

carried out annually



7

Types of Security Training

Incl. Women's Security Awareness Training

THANK YOU



29

Corporate Indicators

that measure the change in people's lives



\$126 M

Engineering work

57 projects in 27 countries



8,463

Medical and Counselling sessions

globally to help employees



\$5 M

Critical Corporate Initiatives

to strengthen ERM and internal control