

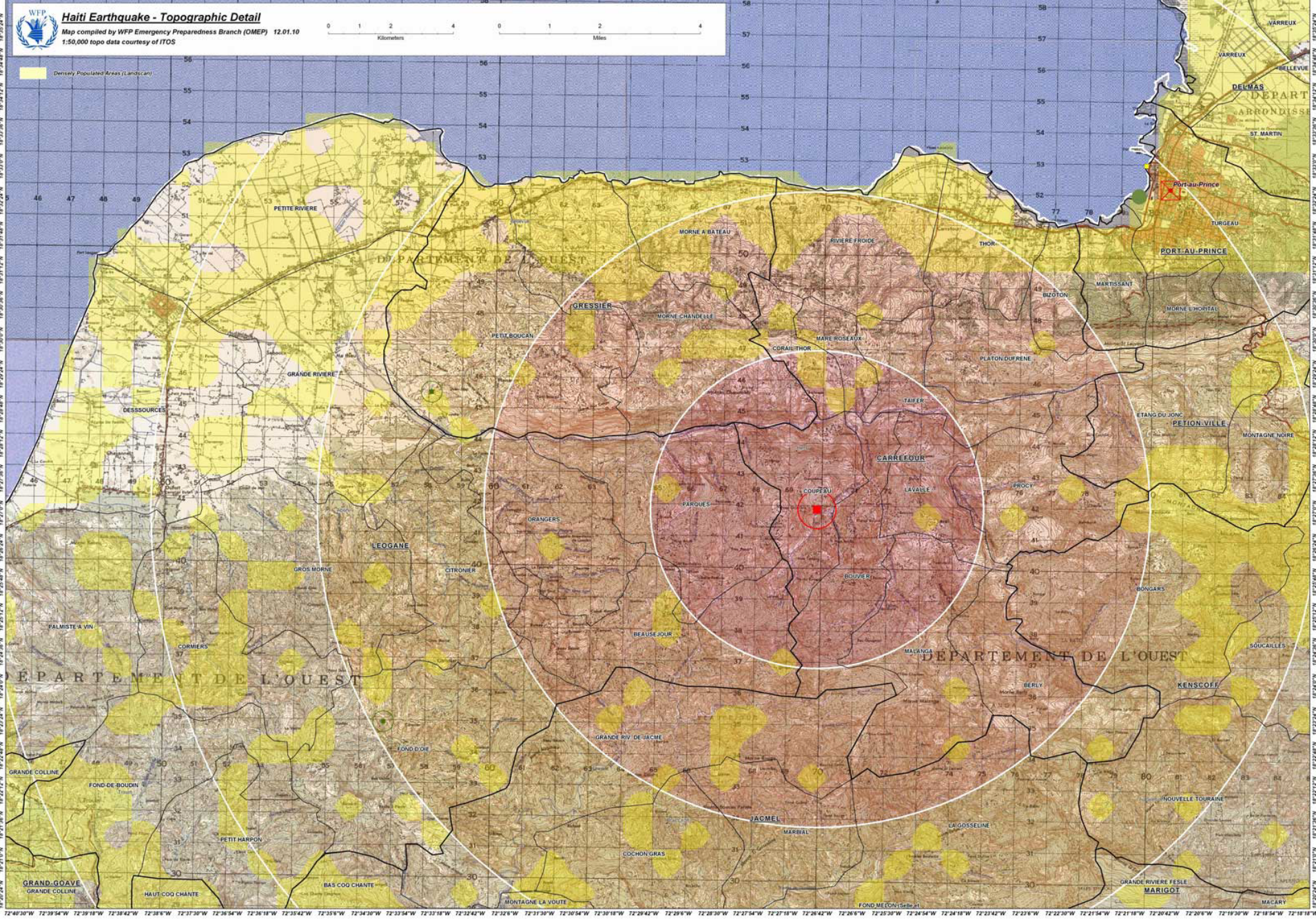
72°40'30"W 72°39'54"W 72°39'18"W 72°38'42"W 72°38'6"W 72°37'30"W 72°36'54"W 72°36'18"W 72°35'42"W 72°35'6"W 72°34'30"W 72°33'54"W 72°33'18"W 72°32'42"W 72°32'6"W 72°31'30"W 72°30'54"W 72°30'18"W 72°29'42"W 72°29'6"W 72°28'30"W 72°27'54"W 72°27'18"W 72°26'42"W 72°26'6"W 72°25'30"W 72°24'54"W 72°24'18"W 72°23'42"W 72°23'6"W 72°22'30"W 72°21'54"W 72°21'18"W 72°20'42"W 72°20'6"W 72°19'30"W 72°18'54"W 72°18'18"W



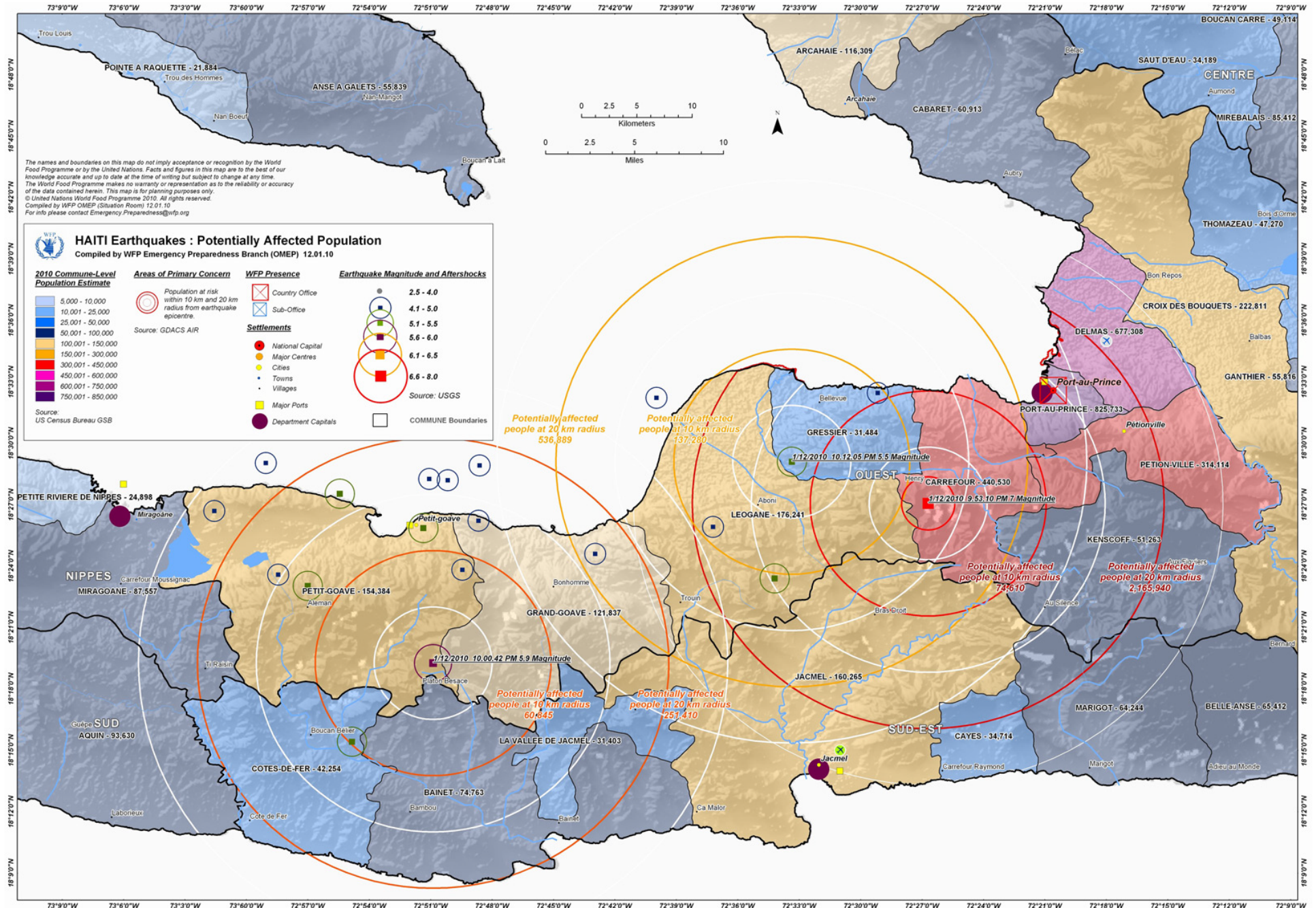
Haiti Earthquake - Topographic Detail
Map compiled by WFP Emergency Preparedness Branch (OEMP) 12.01.10
1:50,000 topo data courtesy of ITOS



Density Populated Areas (Landscan)



72°40'30"W 72°39'54"W 72°39'18"W 72°38'42"W 72°38'6"W 72°37'30"W 72°36'54"W 72°36'18"W 72°35'42"W 72°35'6"W 72°34'30"W 72°33'54"W 72°33'18"W 72°32'42"W 72°32'6"W 72°31'30"W 72°30'54"W 72°30'18"W 72°29'42"W 72°29'6"W 72°28'30"W 72°27'54"W 72°27'18"W 72°26'42"W 72°26'6"W 72°25'30"W 72°24'54"W 72°24'18"W 72°23'42"W 72°23'6"W 72°22'30"W 72°21'54"W 72°21'18"W 72°20'42"W 72°20'6"W 72°19'30"W 72°18'54"W 72°18'18"W



The names and boundaries on this map do not imply acceptance or recognition by the World Food Programme or by the United Nations. Facts and figures in this map are to the best of our knowledge accurate and up to date at the time of writing but subject to change at any time. The World Food Programme makes no warranty or representation as to the reliability or accuracy of the data contained herein. This map is for planning purposes only.
 © United Nations World Food Programme 2010. All rights reserved.
 Compiled by WFP OMEP (Situation Room) 12.01.10
 For info please contact Emergency Preparedness@wfp.org

HAITI Earthquakes : Potentially Affected Population

Compiled by WFP Emergency Preparedness Branch (OPEP) 12.01.10

2010 Commune-Level Population Estimate	Areas of Primary Concern	WFP Presence	Earthquake Magnitude and Aftershocks
5,000 - 10,000	Population at risk within 10 km and 20 km radius from earthquake epicentre.	Country Office	2.5 - 4.0
10,001 - 25,000	Source: GDACS AIR	Sub-Office	4.1 - 5.0
25,001 - 50,000		Settlements	5.1 - 5.5
50,001 - 100,000		National Capital	5.6 - 6.0
100,001 - 150,000		Major Centres	6.1 - 6.5
150,001 - 300,000		Cities	6.6 - 8.0
300,001 - 450,000		Towns	
450,001 - 600,000		Villages	
600,001 - 750,000		Major Ports	
750,001 - 850,000		Department Capitals	
Source: US Census Bureau GSB			Source: USGS
			COMMUNE Boundaries

Potentially affected people at 20 km radius 536,889

Potentially affected people at 10 km radius 137,280

Potentially affected people at 10 km radius 73,610

Potentially affected people at 20 km radius 2,165,940

Potentially affected people at 10 km radius 60,845

Potentially affected people at 20 km radius 251,410

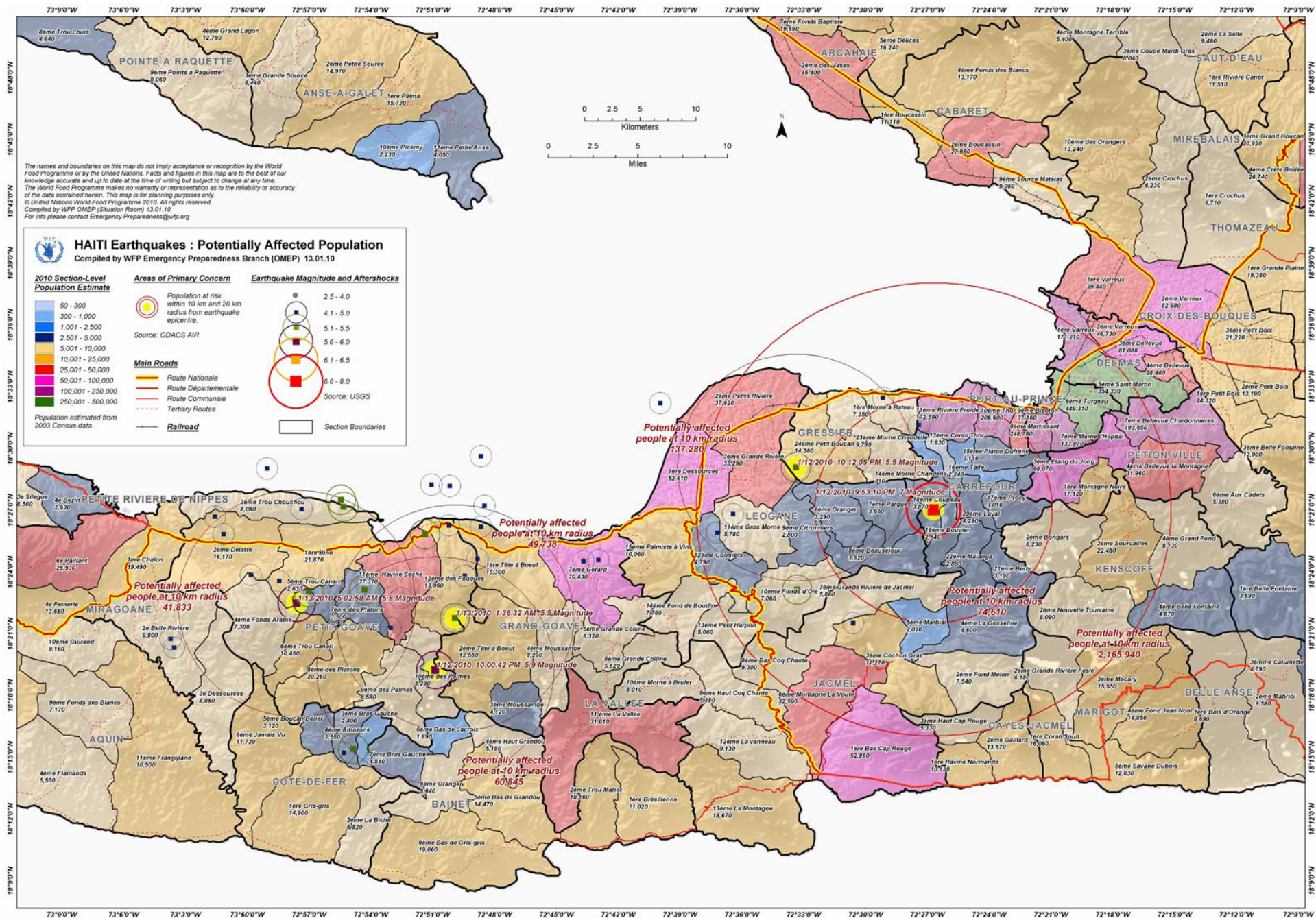
Potentially affected people at 10 km radius 160,265

Potentially affected people at 20 km radius 160,265

1/12/2010 10.32.05 PM 5.5 Magnitude

1/12/2010 9.53.10 PM 7 Magnitude

1/12/2010 10.00.42 PM 5.9 Magnitude



The names and boundaries on this map do not imply acceptance or recognition by the World Food Programme or by the United Nations. Facts and figures in this map are to the best of our knowledge accurate and up to date at the time of writing but subject to change at any time. The World Food Programme makes no warranty or representation as to the reliability or accuracy of the data contained herein. This map is for planning purposes only.
 © United Nations World Food Programme 2010. All rights reserved.
 Compiled by WFP OMEP (Situation Room) 13.01.10
 For info please contact Emergency Preparedness Branch@wfp.org

HAITI Earthquakes : Potentially Affected Population

Compiled by WFP Emergency Preparedness Branch (OMEP) 13.01.10

2010 Section-Level Population Estimate	Areas of Primary Concern	Earthquake Magnitude and Aftershocks
50 - 300	Population at risk within 10 km and 20 km radius from earthquake epicentre.	2.5 - 4.0
300 - 1,000	Source: GDACS AIR	4.1 - 5.0
1,001 - 2,500		5.1 - 5.5
2,501 - 5,000		5.6 - 6.0
5,001 - 10,000		6.1 - 6.5
10,001 - 25,000		6.6 - 8.0
25,001 - 50,000		
50,001 - 100,000		
100,001 - 250,000		
250,001 - 500,000		

Population estimated from 2003 Census data.

Main Roads

- Route Nationale
- Route Départementale
- Route Communale
- Tertiary Routes
- Railroad

Section Boundaries

Potentially affected people at 10 km radius: 137,280

Potentially affected people at 10 km radius: 49,738

Potentially affected people at 10 km radius: 41,833

Potentially affected people at 10 km radius: 74,610

Potentially affected people at 10 km radius: 2,165,940

Potentially affected people at 10 km radius: 60,845

1/12/2010 10:12:05 PM 5.5 Magnitude

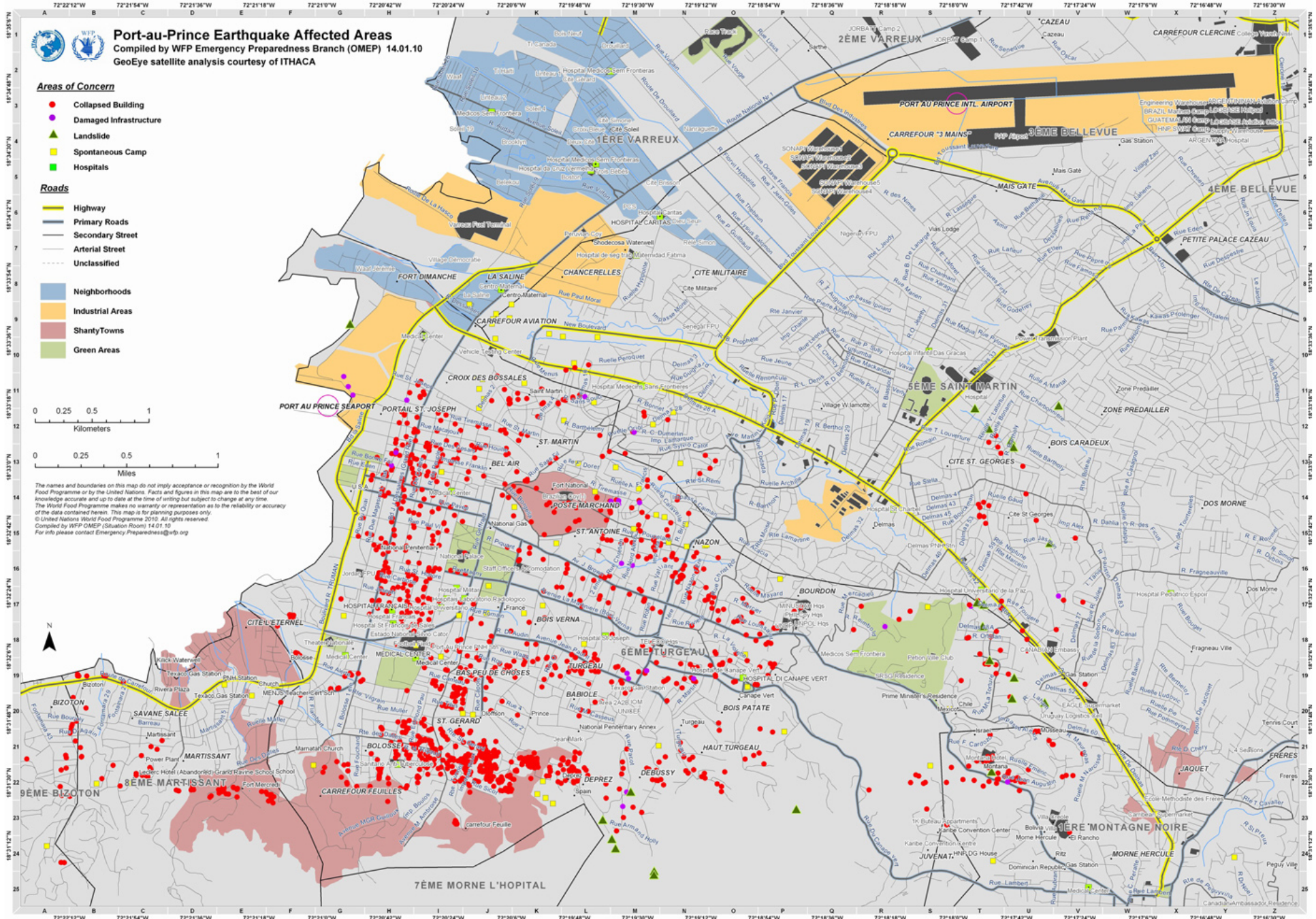
1/12/2010 9:53:10 PM 7 Magnitude

1/13/2010 4:02:58 AM 5.8 Magnitude

1/12/2010 1:36:32 AM 5.5 Magnitude

1/12/2010 10:00:42 PM 5.9 Magnitude

73°9'0"W 73°6'0"W 73°3'0"W 73°0'0"W 72°57'0"W 72°54'0"W 72°51'0"W 72°48'0"W 72°45'0"W 72°42'0"W 72°39'0"W 72°36'0"W 72°33'0"W 72°30'0"W 72°27'0"W 72°24'0"W 72°21'0"W 72°18'0"W 72°15'0"W 72°12'0"W 72°9'0"W



Port-au-Prince Earthquake Affected Areas
 Compiled by WFP Emergency Preparedness Branch (OEMP) 14.01.10
 GeoEye satellite analysis courtesy of ITHACA

Areas of Concern

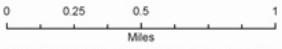
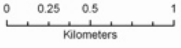
- Collapsed Building
- Damaged Infrastructure
- ▲ Landslide
- Spontaneous Camp
- Hospitals

Roads

- Highway
- Primary Roads
- Secondary Street
- Arterial Street
- Unclassified

Neighborhoods

- Industrial Areas
- Shantytowns
- Green Areas



The names and boundaries on this map do not imply acceptance or recognition by the World Food Programme or by the United Nations. Facts and figures in this map are to the best of our knowledge accurate and up to date at the time of writing but subject to change at any time. The World Food Programme makes no warranty or representation as to the reliability or accuracy of the data contained herein. This map is for planning purposes only.
 © United Nations World Food Programme 2010. All rights reserved.
 Compiled by WFP OEMP (Situation Room) 14.01.10
 For info please contact Emergency.Preparedness@wfp.org

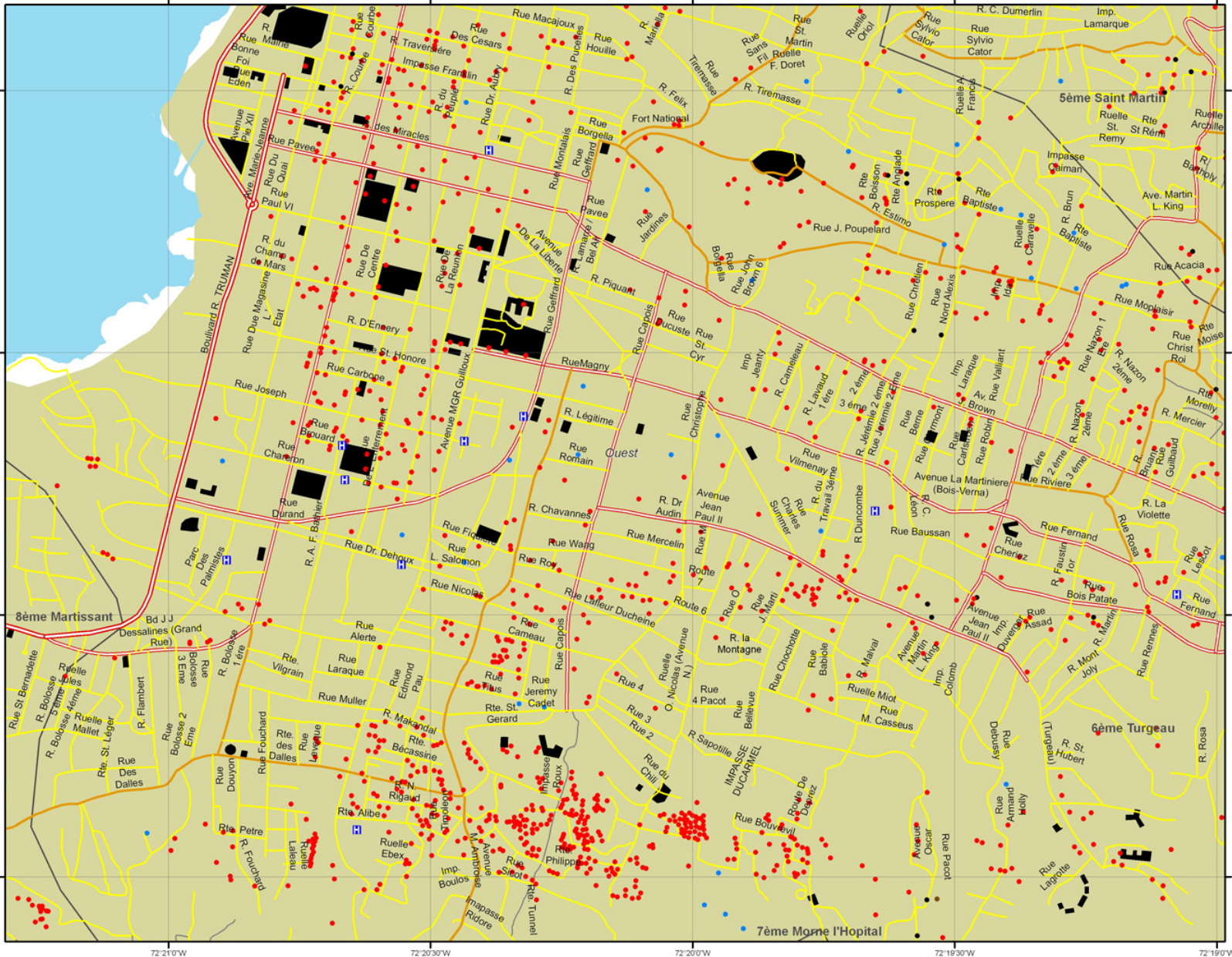


Haiti - Port-au-Prince - Damage assessment as of 13/01/2010 (based on GeoEye satellite image)

Glide Number: EQ-2010-000009-HTI

Publication date: 15/01/2010

Damage assessment based on satellite image visual interpretation. Data are not validated on the field.



Legend

- | | |
|--------------------------|--------------------|
| Assessment | Road |
| ● Collapsed building | — Highway |
| ● Damaged infrastructure | — Primary |
| ● Landslide | — Secondary Street |
| ● Spontaneous camp | — Arterial Street |
| ⊠ Hospital | — Unclassified |
| ■ Buildings | — River/Stream |
| Airdrome | — Perennial |
| ✈ Airports | — Non perennial |
| ✈ Airfields/Airstrips | — Ocean and Sea |
| ● HLZ | — Built-up Area |
| ● Unspecified | — Inland Water |

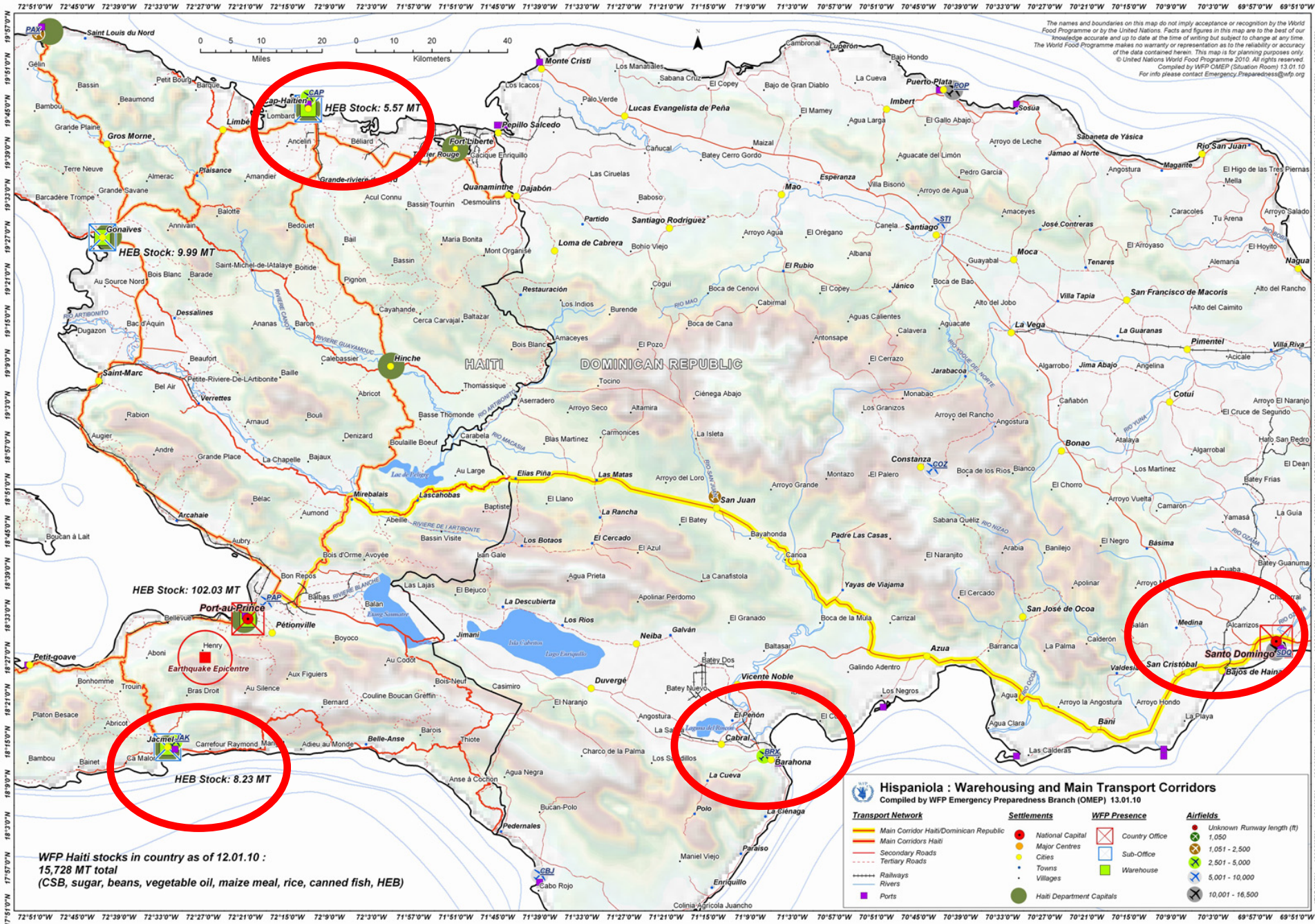


1:12,500 on A3 paper format
 0 0.1 0.2 0.3 0.4 0.5 km
 Geographic Coordinates - WGS84

Source for Vector Map level 0 (VMAPO) datasets was the United States National Imagery and Mapping Agency. Administrative boundaries, road data and health facilities are produced by UN DPKO. Names and boundaries on this map do not imply acceptance or recognition by the World Food Programme or by the United Nations. Facts and figures in this map are accurate and up to date to the best of our knowledge at the time of writing but subject to change at any time. The World Food Programme makes no warranty or representation as to the reliability or accuracy of the data contained herein. This map is for planning purposes only. © United Nations World Food Programme 2007. All rights reserved.

Produced by ITHACA in cooperation with WFP





WFP Haiti stocks in country as of 12.01.10 :
 15,728 MT total
 (CSB, sugar, beans, vegetable oil, maize meal, rice, canned fish, HEB)

The names and boundaries on this map do not imply acceptance or recognition by the World Food Programme or by the United Nations. Facts and figures in this map are to the best of our knowledge accurate and up to date at the time of writing but subject to change at any time. The World Food Programme makes no warranty or representation as to the reliability or accuracy of the data contained herein. This map is for planning purposes only. © United Nations World Food Programme 2010. All rights reserved. Compiled by WFP OMEP (Situation Room) 13.01.10. For info please contact Emergency.Preparedness@wfp.org

Hispaniola : Warehousing and Main Transport Corridors

Compiled by WFP Emergency Preparedness Branch (OMEP) 13.01.10

Transport Network	Settlements	WFP Presence	Airfields
Main Corridor Haiti/Dominican Republic	National Capital	Country Office	Unknown Runway length (ft)
Main Corridors Haiti	Major Centres	Sub-Office	1,050
Secondary Roads	Cities	Warehouse	1,051 - 2,500
Tertiary Roads	Towns		2,501 - 5,000
Railways	Villages		5,001 - 10,000
Rivers	Haiti Department Capitals		10,001 - 16,500
Ports			