



OVERVIEW OF WFP



- **History**
- **Place in the UN System**
- **Mandate and mission**
- **Facts and figures**



WFP IN THE UN SYSTEM



- **DUAL PARENTAGE**

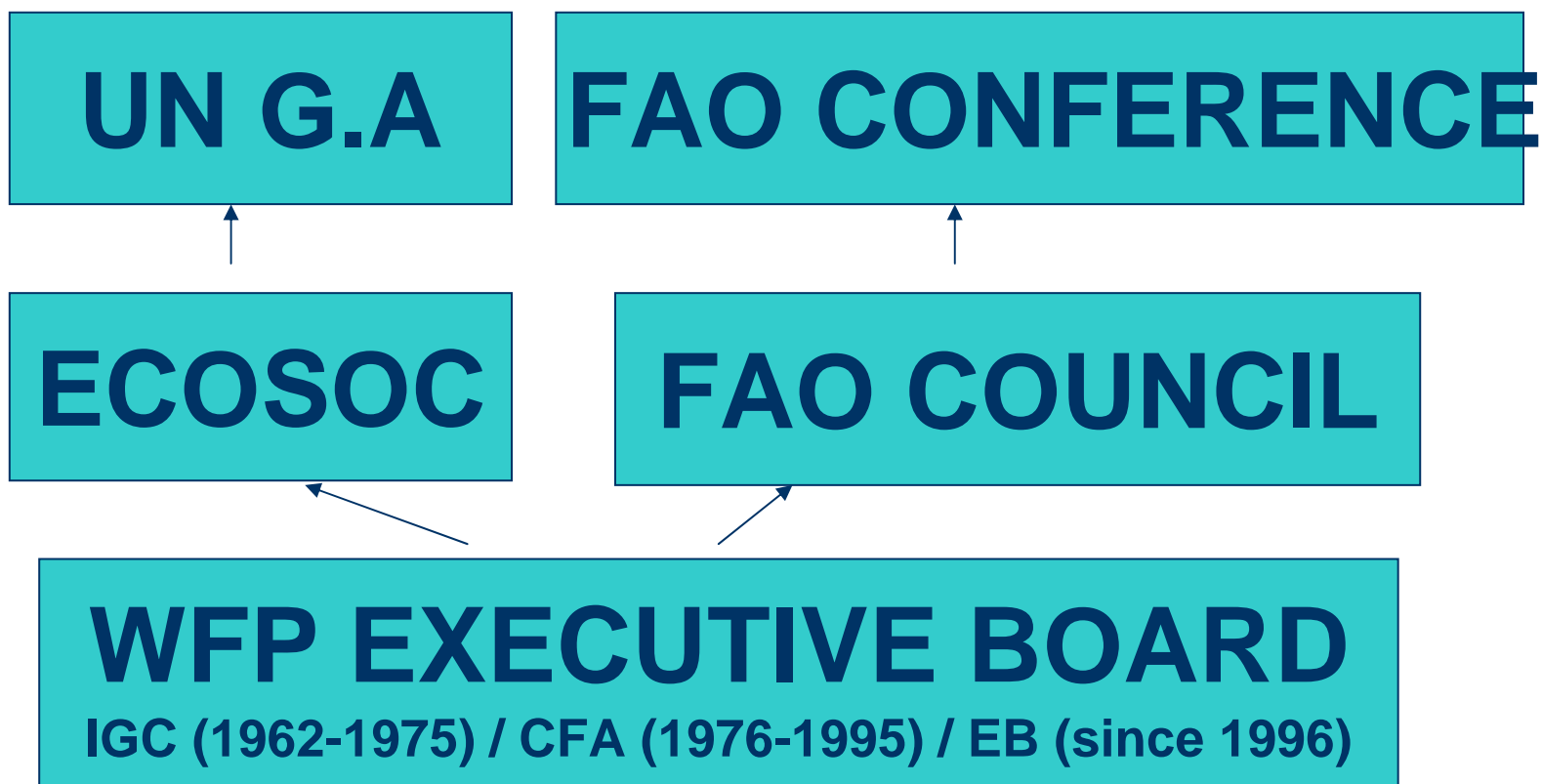
**Jointly established in 1961
by the United Nations
and FAO**

WFP HISTORY

- **Created in 1961 as experimental programme scheduled to go into operation in 1963**
- **Became operational in 1962 due to emergencies**

WFP IN THE UN SYSTEM

DUAL PARENTAGE





WFP DUAL MANDATE



- **Support economic and social development**
- **Meet refugees needs and other emergency needs**
- **Promote world food security**



WFP MISSION STATEMENT



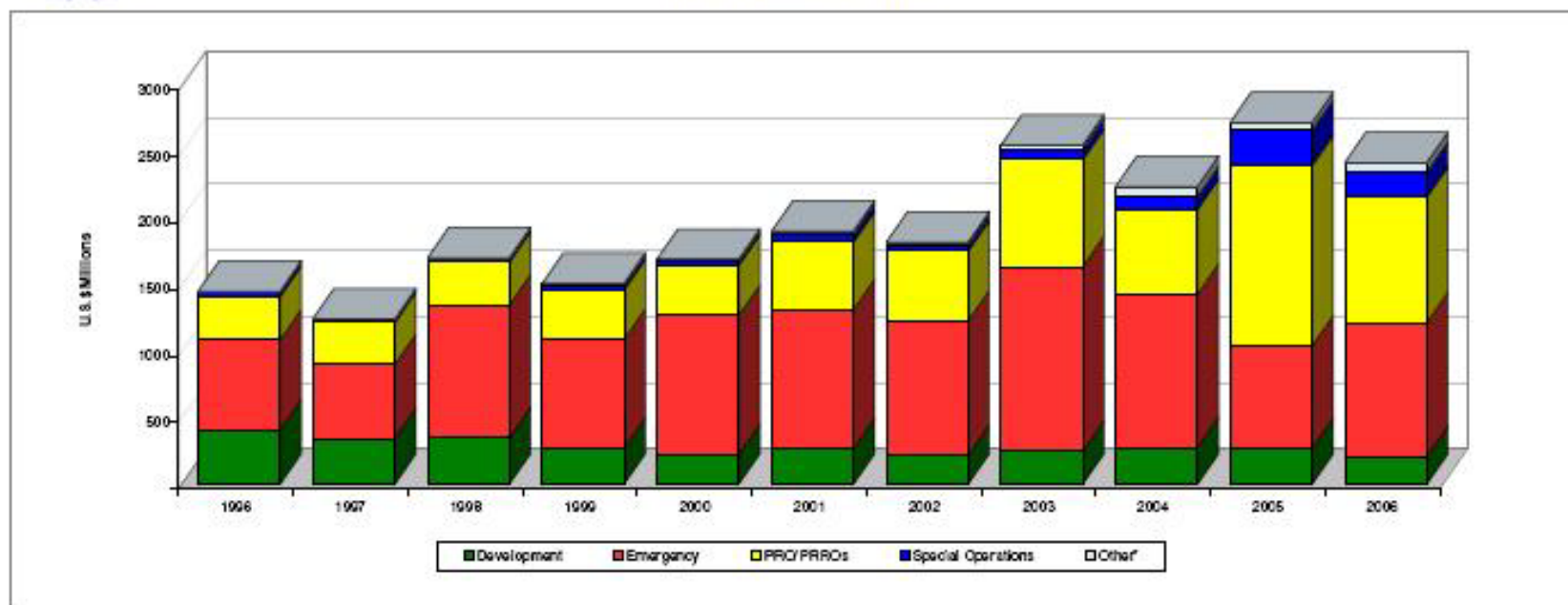
- 1. Save lives in emergency situations**
- 2. Improve nutrition of vulnerable at critical times in their lives**
- 3. Help build assets & promote self reliance of poor**

WFP FACTS AND FIGURES



CONTRIBUTIONS TO WFP

from 1996 to 2006



| TOTAL CONTRIBUTIONS TO WFP | | | | | | | | | | | |
|----------------------------|----------------|----------------|----------------|----------------|----------------|----------------|----------------|----------------|----------------|----------------|----------------|
| (in US \$ Millions) | | | | | | | | | | | |
| | 1996 | 1997 | 1998 | 1999 | 2000 | 2001 | 2002 | 2003 | 2004 | 2005 | 2006 |
| Development | 408.4 | 343.5 | 346.1 | 267.5 | 222.4 | 263.2 | 213.2 | 245.2 | 276.1 | 269.6 | 207.4 |
| Emergency | 676.6 | 558.1 | 1,002.3 | 820.8 | 1,045.7 | 1,049.9 | 1,014.7 | 1,392.7 | 1,152.7 | 769.4 | 1,008.1 |
| PRO/PRROs | 331.4 | 318.6 | 323.6 | 375.5 | 381.9 | 511.8 | 530.4 | 809.7 | 642.5 | 1,364.0 | 950.3 |
| Special Operations | 31.1 | 16.0 | 21.4 | 31.6 | 26.7 | 55.7 | 37.6 | 74.7 | 96.1 | 264.6 | 185.3 |
| Other* | 5.5 | 8.4 | 11.1 | 16.7 | 17.5 | 23.8 | 25.8 | 32.6 | 74.1 | 57.1 | 71.9 |
| TOTAL | 1,453.1 | 1,244.6 | 1,704.5 | 1,512.1 | 1,694.2 | 1,904.4 | 1,821.6 | 2,554.9 | 2,241.5 | 2,724.7 | 2,422.8 |
| Bilateral | | 57.0 | 20.1 | 46.0 | 59.2 | 57.3 | 45.6 | 1,035.4 | 996.5 | 138.8 | 39.3 |

*Other: e.g. T/Fund, Special Accounts and General Fund.

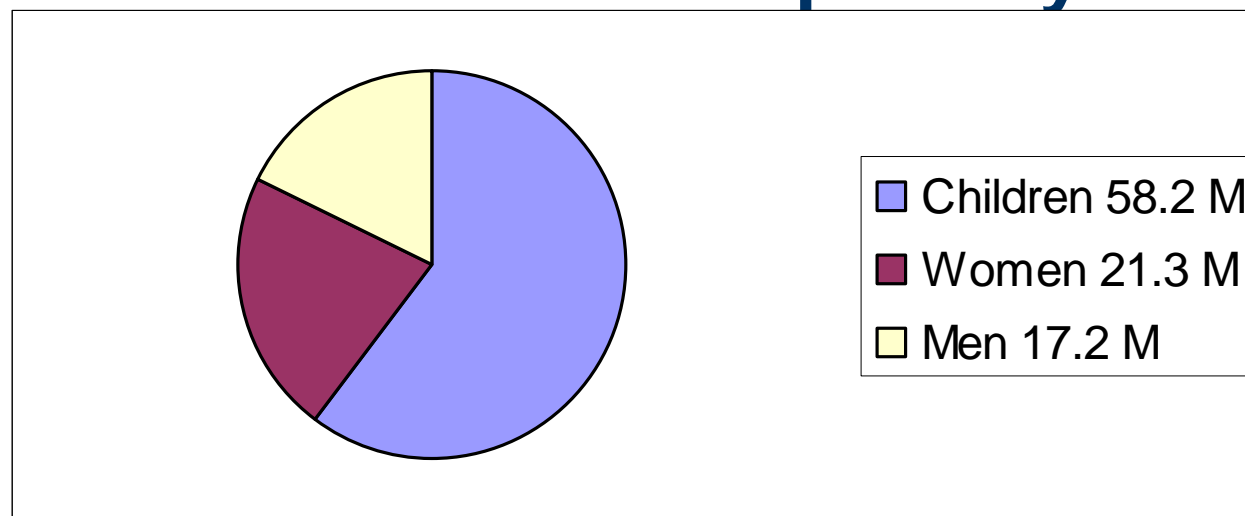
As of 20 November 2006

WFP FACTS AND FIGURES

Beneficiaries of WFP Food Aid

2005 Statistics

- **96.7 Million hungry people, in 82 countries**
MDG1: Eradicate extreme poverty & hunger



WFP FACTS AND FIGURES

Location of WFP Staff

2005 Statistics

10, 523 Staff, 91 % in the field

6 Regional Bureaux

Panama, Bangkok, Cairo, Dakar, Kampala, Johannesburg

1 Stand Alone Country (Sudan, reporting to HQ)

82 Country Offices (reporting to Reg. Bureaux)



WFP PARTNERS



- **National Governments**
- **U.N Agencies & BW Agencies**
FAO-IFAD-UNICEF-UNESCO-
UNHCR- UNAIDS- WORLD BANK
- **NGOs**
- **Private Sector**



OVERVIEW OF WFP

QUESTIONS ?