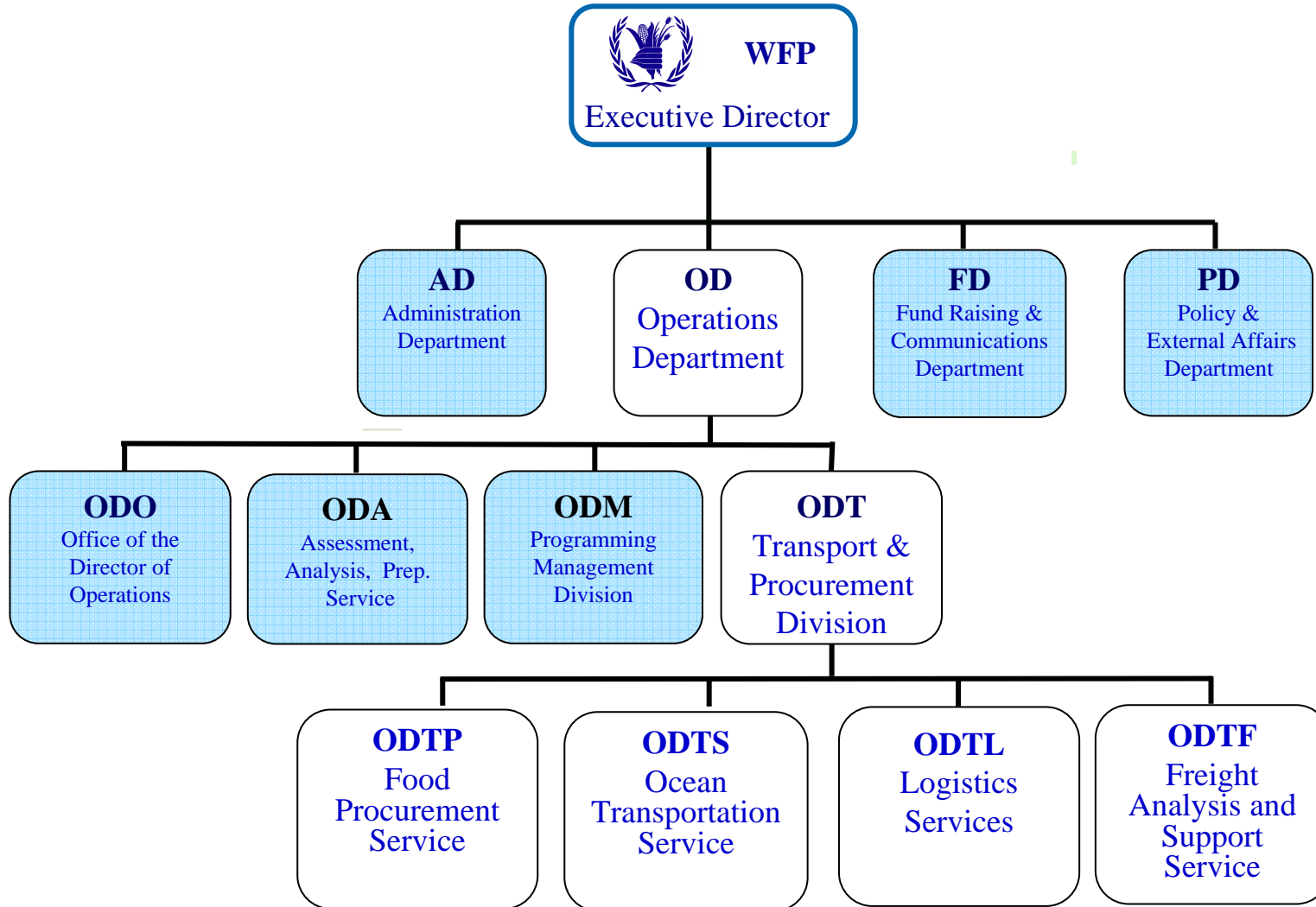


WFP – Transport and Procurement



Organizational Chart 2006



Transport & Procurement division



- The core of WFP operations
- Purchasing & moving food aid
- Acknowledged leader of logistics within the UN system

Challenges

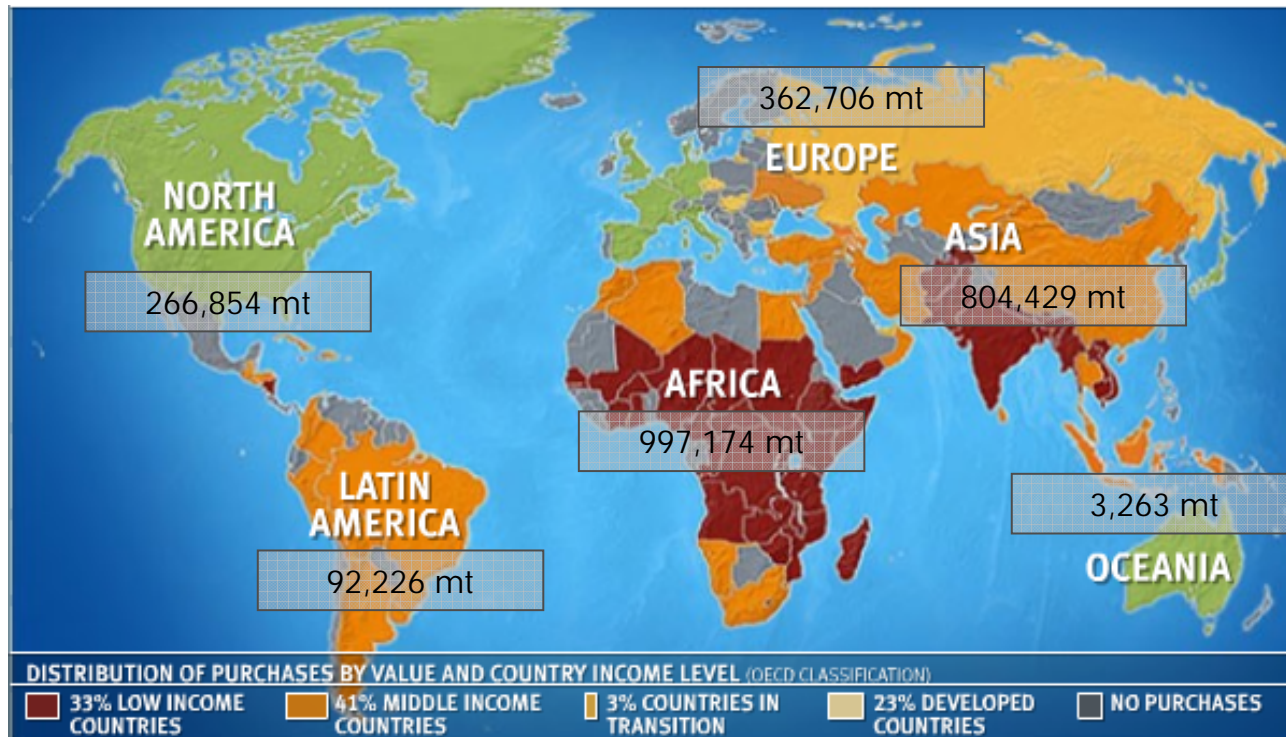
- Capacity building to enable WFP to respond swiftly & effectively to 4 large simultaneous emergencies
- To improve WFP's systems & procedures for responding to emergencies
- To integrate better preparedness & response with other humanitarian organisations & private sector for emergency response
- Increasing the recognition of logistics both internally & externally

Key Figures 2005

transported 3.3 million tons of food aid

ODTP - Procurement - where did we purchase?

2.5 million metric tonnes procured



Top 15	Country	Value USD	%
1	Canada	69,330,680	9.73
2	South Africa	57,525,703	8.07
3	Indonesia	50,683,157	7.11
4	Ethiopia	42,474,511	5.96
5	Uganda	39,331,303	5.52
6	Turkey	32,140,721	4.51
7	Ecuador	31,868,760	4.47
8	China	26,931,905	3.78
9	India	26,858,170	3.77
10	Italy	22,368,695	3.14
11	Denmark	22,246,503	3.12
12	Tanzania	22,128,963	3.11
13	Malaysia	19,298,745	2.49
14	Japan	17,745,699	2.49
15	Pakistan	16,694,306	2.34
	Total	497,627,821	69.85

ODTS - Ocean Transport



- Responsible for all ocean transport arrangements relating to WFP food aid shipments including:
 - Planning
 - Coordination
 - Consolidation of cargoes
- Manages a “floating stock of food aid”.

Key Figures

2.4 million tonnes of food aid were transported using :
201 chartered ships
2000 liner vessels, both conventional and containers.

ODTL – Logistics Service

Three sub-units

- Augmented Logistic Intervention Team for Emergencies
 - Augment operational support in emergency response situation through Stand-by Partners; Private Sector Partners; UNHRD Equipment; Emergency Teams
 - Support for ongoing operations
- Aviation
 - Humanitarian Air Service (HAS)
 - Aviation Safety
- Surface Transport
 - Provide normative guidance
 - Compliance teams
 - Training
 - Operational trouble shooter



ODTL - Aviation



- Humanitarian Air Services (HAS) – since June 2003 has been the official provider of air transport services to humanitarian operations including:

- Delivering food aid
- Transporting UN personnel to ensure the safety of humanitarian operations

- Aviation Safety Unit: Ensures that WFP is using safe and reliable air operators, operating in compliance with aviation requirements

- Pre-qualify new operators
- Oversee contracted operators.

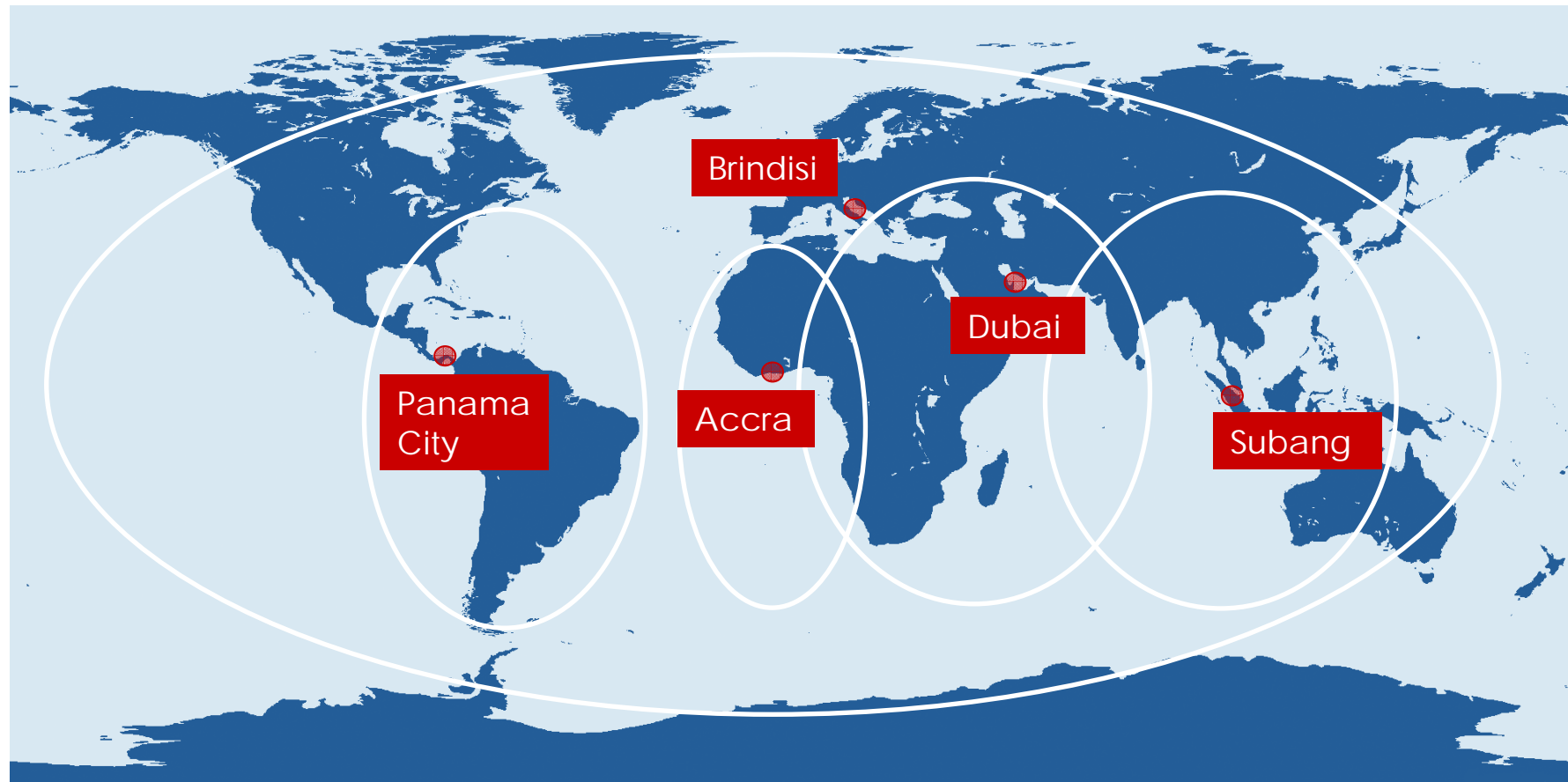
Key Figures 2005

154,00 metric tonnes of cargo moved
369,00 passengers for over 100 humanitarian organizations
with approximately 90 aircrafts

ODTL Key Initiative - HRD Network Set-Up

Humanitarian Response Depots

- Strategically located WFP storage depots made available for humanitarian organisations



ODTL - Logistics Cluster



- In line with the Humanitarian Response Initiative, 9 clusters cover critical areas of humanitarian response, each with a lead agency. WFP is the lead for the logistics cluster
- The project involves an annual budget of \$ 9.2 million for immediate Inter-agency response teams and where necessary a coordinated logistics response
- Recent examples include the Pakistan EQ, Horn of Africa drought, DRC, Indonesia EQ & the Lebanon conflict.

ODTF - Freight Analysis & Support



- Provides management and analytical tools in transport & logistics for WFP;
- Ensures critical information to support country offices & WFP Logistics
- Provides a data entry and process service to Shipping, Logistics & the Legal Branch;
- Focal point for the entry, verification, management & reporting of transport data

Key Figures 2005

Data registered from :

- 81 country offices
- 7 Regional Bureaus
- 363 data entry stations in the world

Registering up to 700,000 waybills