

WFP Programme Categories and Field Operations


Background for Permanent
Representatives on 7 December 2006



Kenya




Programme Categories

- **Emergency Operations – EMOPs**
 - **Protracted Relief and Recovery Operations – PRROs**
 - **Development Projects/Country Programmes**
 - **Special Operations (SOs) (no food distribution)**
- 




Emergency Operations

1. An Emergency Operation (EMOP) meets the relief food aid needs of refugees, or other people who are displaced or affected by conflict, or victims of natural disasters or other crises.
 2. An EMOP is approved by the Executive Director and the Director-General of FAO, or by the Executive Director if the food costs are less than three million US dollars.
 3. The Executive Board receives a summary of emergency operations approved twice per year.
- 



Protracted Relief and Recovery Operations

4. Food aid beyond an initial 24-month period to emergency-affected populations (refugees and others) is usually provided through a protracted relief and recovery operation (PRRO).
 5. A PRRO is approved by the Executive Board, or by the Executive Director if the food costs are less than 20 million US dollars.
 6. The Executive Board receives a summary of PRROs approved under the delegated authority of the Executive Director.
- 



Kenya



Development Programme

- Development Projects:
 - Single sector interventions/small volume
 - Country Programmes:
 - Several components
 - Linked to UNDAF and UN Programme Cycle
 - Technical Assistance:
 - Vulnerability Analysis and Mapping (VAM)
 - Rehabilitation and Disaster Preparedness
 - Help to establishing or improving national food assistance programmes
 - Food fortification
 - Capacity Development:
 - WFP's support to building country and regional capacities
- 



Special Operations

An SO is undertaken to:


- enhance transport and logistics infrastructure for efficient delivery of food assistance, especially to meet emergency and protracted relief needs;
- enhance coordination within the United Nations System and with other partners through the provision of designated common services.

An SO is approved by the Executive Director.





Regional Operations

- Regional operations may be appropriate when there are substantial and continuing movements of displaced populations between the countries concerned and changes in the accessibility and needs of different areas within those countries due to ongoing conflict and insecurity.
- 



Haiti




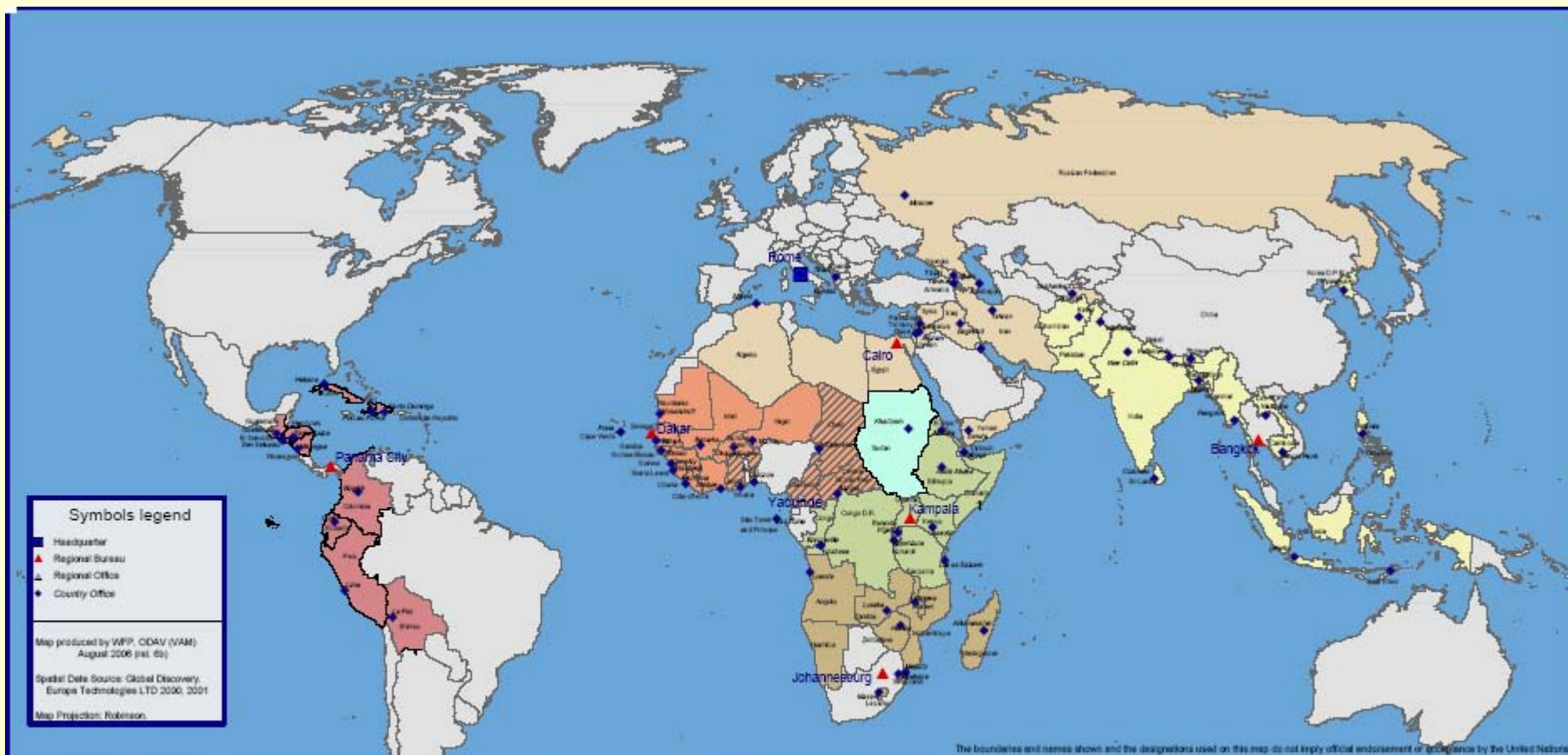
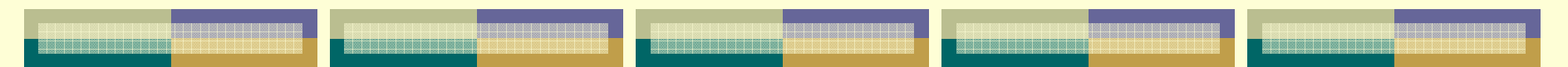
Field Operations

WFP has decentralised all Regional Bureaux. The Bureaux are known by the Acronym OD (Operations Department) plus the first letter of the city location

—

- **ODB** (Bangkok): Asia
 - **ODC** (Cairo): Mediterranean, Middle East & Central Asia, Eastern Europe)
 - **ODD** (Dakar): West Africa
 - **ODDY** (Yaoundé): Central Africa Regional Office
 - **ODJ** (Johannesburg): Southern Africa
 - **ODK** (Kampala): East and Central Africa
 - **ODP** (Panama City): Latin America
 - **ODS** (Sudan): Stand-alone

 - There are 82 WFP Country Offices throughout the world.
- 



Symbols legend

- Headquarter
- ▲ Regional Bureau
- ▲ Regional Office
- Country Office

Map produced by WFP, ODAV (VAM)
August 2006 (rev. 06)

Spatial Data Source: Global Discovery,
Europa Technologies LTD 2000, 2001

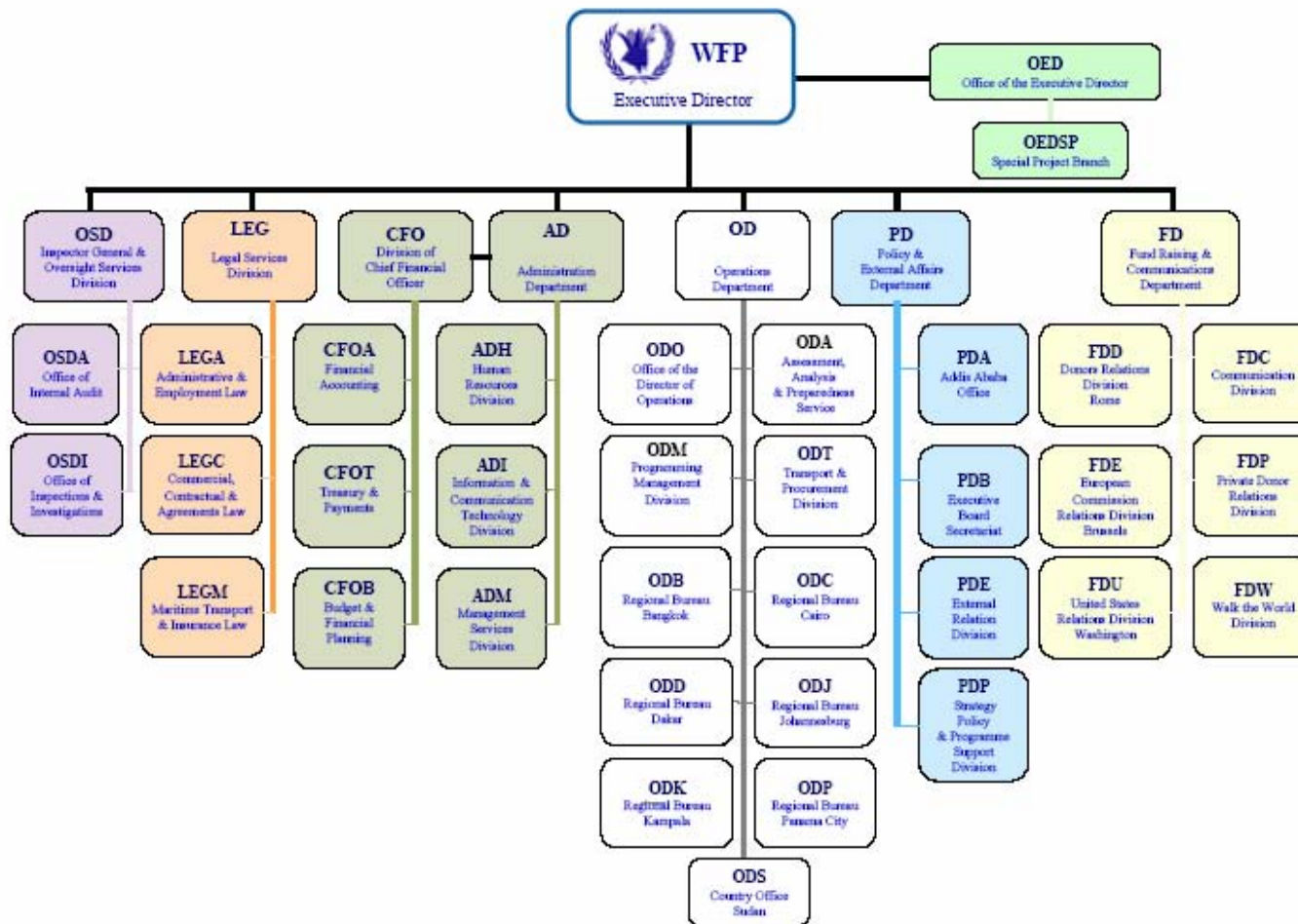
Map Projection: Robinson

LATIN AMERICA AND CARIBBEAN (OO, PANAMA CITY)	MIDDLE EAST, CENTRAL ASIA AND EASTERN EUROPE (ODC, CAIRO)	WEST AFRICA (ODD, DAKAR)	EAST AND CENTRAL AFRICA (ODK, KAMPALA)	SOUTHERN AFRICA (ODJ, JOHANNESBURG)	ASIA (ODS, BANGKOK)	SUDAN (ODS, KHARTOUM)
Bolivia Colombia Cuba Dominican Republic Ecuador El Salvador Guatemala Haiti Honduras Nicaragua Peru	Albania Algeria Armenia Azerbaijan Egypt Georgia Iran Iraq Jordan Lebanon Palestinian Territory Russian Federation Syria Tajikistan Yemen	Burkina Faso Cape Verde Côte d'Ivoire Guinea Guinea-Bissau Liberia Mali Mauritania Niger Senegal Sierra Leone The Gambia	Burundi Congo Dem. Rep. of Congo Djibouti Eritrea Ethiopia Kenya Rwanda Somalia Tanzania Uganda	Angola Lesotho Madagascar Malawi Mozambique Namibia Swaziland Zambia Zimbabwe	Afghanistan Bangladesh Bhutan Cambodia DPR of Korea India Indonesia Lao PDR Myanmar Nepal Pakistan Philippines Sri Lanka Timor Leste	Central East & Three Areas (CETA) Darfur (Krt) South Sudan (Juba)

1) The Somalia Country Office is managed from Nairobi



Organizational Chart 2006






Operations Department in WFP Headquarters

The Operations Department in HQ supports field operations and includes units specializing in:

- Logistics;
- Food procurement (local and international);
- Analysis, Assessment and Preparedness;
- Programming and Reporting (SPRs);
- Programme Quality (including Programme Guidance)

Logistics, Procurement and Vulnerability Assessment Mapping
all function with staff based both in Rome and in the field.





In-house technical support

- Economic analysis
- School feeding
- Gender and mother and child health
- HIV/AIDS
- Nutrition
- Emergencies and transitions

Technical experts provide guidance material; assist in project design; participate in field missions.





Important statistics

**No. of
Beneficiaries**

96 683 840

Total mt distributed in 2005 by project category

Dev/CP

557,824

EMOP

1,737,938

PRRO

1,949,764

Total

4,245,527





Lebanon

WFP Website



- www.wfp.org
- Appeals
- Executive Board documents
- All approved project documents including budget revisions
- Standard Project Reports –
Password required (User name: WFP and password: EB/97)

Thank you



Somalia

Special Operations approved in 2006

10342.1	Sudan	3 013 107.00 \$
10513.0	Eastern & Central Africa Bureau	1 510 270.00 \$
10514.0	Afghanistan	15 728 347.00 \$
10518.0	Somalia	3 725 413.67 \$
10522.0	World Food Programme (HQ-Rome)	7 563 393.00 \$
10534.0	Lebanon	34 849 585.00 \$
10535.0	Lebanon	817 874.00 \$
10536.0	Lebanon	1 244 230.00 \$
10539.0	Sri Lanka	2 467 036.40 \$
10556.0	Congo, Democratic Republic of	5 132 212.00 \$
10562.0	Central African Republic	430 849.25 \$
10564.0	Sri Lanka	392 461.67 \$
10569.0	Kenya	10 811 247.50 \$
10570.0	Ethiopia	750 547.50 \$

ASIA REGIONAL BUREAU (ODB)

mt distributed in 2005

	Beneficiaries reached	CP/Dev	EMOP	PRRO	Total
Afghanistan	5 706 534	-	-	197 417	197 417
Bangladesh	5 642 531	64 930	30 057	4 649	99 636
Bhutan	50 149	4 006	-	-	4 006
Cambodia	1 366 896	3 191	-	21 508	24 699
China	2 263 492	46 516	-	-	46 516
India	3 211 464	32 572	350	-	32 922
Indonesia	3 035 716	-	101 862	19 756	121 618
Korea, D.P.R.	5 001 933	-	292 855	-	292 855
Laos	282 248	5 336	-	1 536	6 872
Maldives	54 054	-	4 434	-	4 434
Myanmar	571 268	-	8 373	8 927	17 300
Nepal	1 011 038	20 552	-	20 418	40 970
Pakistan	3 911 061	11 131	25 682	-	36 812
Sri Lanka	1 610 785	4 270	82 311	11 081	97 662
Thailand	26 256	-	833	-	833
Timor-Leste	3 442	-	-	20	20

MEDITERRANEAN, MIDDLE EAST & CENTRAL ASIA REGIONAL BUREAU (ODC)

mt distributed in 2005

	Beneficiaries reached	CP/Dev	EMOP	PRRO	Total
Albania	69 402	-	-	5 596	5 596
Algeria	158 000	-	-	30 256	30 256
Armenia	115 043	-	-	7 875	7 875
Azerbaijan	129 722	-	-	10 885	10 885
Egypt	343 076	13 471	-	-	13 471
Georgia	268 200	-	-	13 034	13 034
Iran	46 825	-	-	4 646	4 646
Iraq	3 463 877	-	22 091	-	22 091
Jordan	4 951	3 999	-	-	3 999
Palestinian Territory	493 254	-	52 094	11 495	63 588
Russia	297 452	-	22 732	-	22 732
Syria	88 686	12 985	-	-	12 985
Tajikistan	780 306	-	-	20 531	20 531
Yemen	1 196 060	23 265	-	1 424	24 689

WEST AFRICA REGIONAL BUREAU (ODD)

mt distributed in 2005


	Beneficiaries reached	CP/Dev	EMOP	PRRO	Total
Burkina Faso	773 904	15 283	833	352	16 468
Cape Verde	103 757	2 512	-	-	2 512
Cote d'Ivoire	1 413 126	-	4 320	16 511	20 831
Gambia	113 719	2 604	-	-	2 604
Guinea	482 622	2 568	-	11 850	14 419
Guinea-Bissau	370 166	-	-	5 380	5 380
Liberia	934 934	-	-	56 144	56 144
Mali	676 055	6 837	9 428	893	17 158
Mauritania	700 683	9 368	-	30 104	39 472
Niger	2 569 153	13 082	53 837	-	66 919
Senegal	792 695	4 825	-	2 932	7 757
Sierra Leone	502 283	5 153	-	10 801	15 955



CENTRAL AFRICAN REGIONAL OFFICE (ODDY)

mt distributed in 2005

	Beneficiaries reached	CP/Dev	EMOP	PRRO	Total
Benin	87 881	2 885	1 329	-	4 214
Cameroon	401 698	3 559	2 067	-	5 626
Central African Republic	286 830	2 880	-	2 248	5 128
Chad	703 356	3 457	45 640	-	49 097
Ghana	215 398	6 892	1 886	1 333	10 111
São Tomé & Príncipe	34 628	1 013	-	-	1 013
Togo	38 540	-	575	-	575



SOUTHERN AFRICA REGIONAL BUREAU (ODJ)

mt distributed in 2005

	Beneficiaries reached	CP/Dev	EMOP	PRRO	Total
Angola	1 136 633	-	-	68 640	68 640
Lesotho	570 960	5 741	-	39 921	45 662
Madagascar	356 757	4 059	11 598	-	15 657
Malawi	3 004 130	13 063	-	118 388	131 451
Mozambique	886 553	18 068	-	37 800	55 868
Namibia	44 626	-	3 647	-	3 647
Swaziland	245 586	-	-	16 223	16 223
Zambia	1 097 492	13 467	-	57 748	71 215
Zimbabwe	3 522 750	-	-	91 481	91 481

EAST & CENTRAL AFRICA REGIONAL BUREAU (ODK)

mt distributed in 2005

	Beneficiaries reached	CP/Dev	EMOP	PRRO	Total
Burundi	1 757 682	-	-	72 923	72 923
Congo	1 640 700	-	-	5 820	5 820
Congo, Democratic Rep.	174 016	-	-	77 787	77 787
Djibouti	126 131	1 738	2 579	4 748	9 065
Eritrea	943 536	-	62 687	33 707	96 394
Ethiopia	5 720 661	48 730	133 904	344 497	527 131
Kenya	3 734 195	33 404	133 445	46 237	213 087
Rwanda	544 485	12 628	-	16 180	28 807
Somalia	1 725 000	-	3 469	32 161	35 630
Tanzania	742 195	11 964	-	66 948	78 911
Uganda	3 081 111	9 009	-	228 862	237 871

LATIN AMERICA & CARIBBEAN REGIONAL BUREAU (ODP)

mt distributed in 2005

	Beneficiaries reached	CP/Dev	EMOP	PRRO	Total
Bolivia	525 665	7 179	2 978	-	10 157
Colombia	604 547	-	-	13 620	13 620
Cuba	1 146 580	4 592	2 210	-	6 802
Dominican Republic	49 186	320	-	-	320
Ecuador	5 773	-	186	-	186
El Salvador	394 665	2 011	-	2 468	4 479
Guatemala	613 160	3 388	2 844	6 637	12 869
Guyana	19 840	-	113	-	113
Haiti	1 043 933	6 981	6 853	11 894	25 729
Honduras	621 489	8 086	-	6 120	14 206
Nicaragua	1 392 768	9 381	-	4 006	13 386
Peru	247 389	3 393	1 710	-	5 103



EASTERN EUROPE REGIONAL BUREAU (ODS)

mt distributed in 2005

	Beneficiaries	CP/Dev	EMOP	PRRO	Total
Sudan	6 558 500	11 481	606 126	15 345	632 952

