

EMERGENCY PREPAREDNESS





Preparedness

Anticipating Events



Saving Time



WFP Operational Response

EVENT

WFP Emergency Preparedness

**EARLY
WARNING**

**CONTINGENCY
PLANNING**

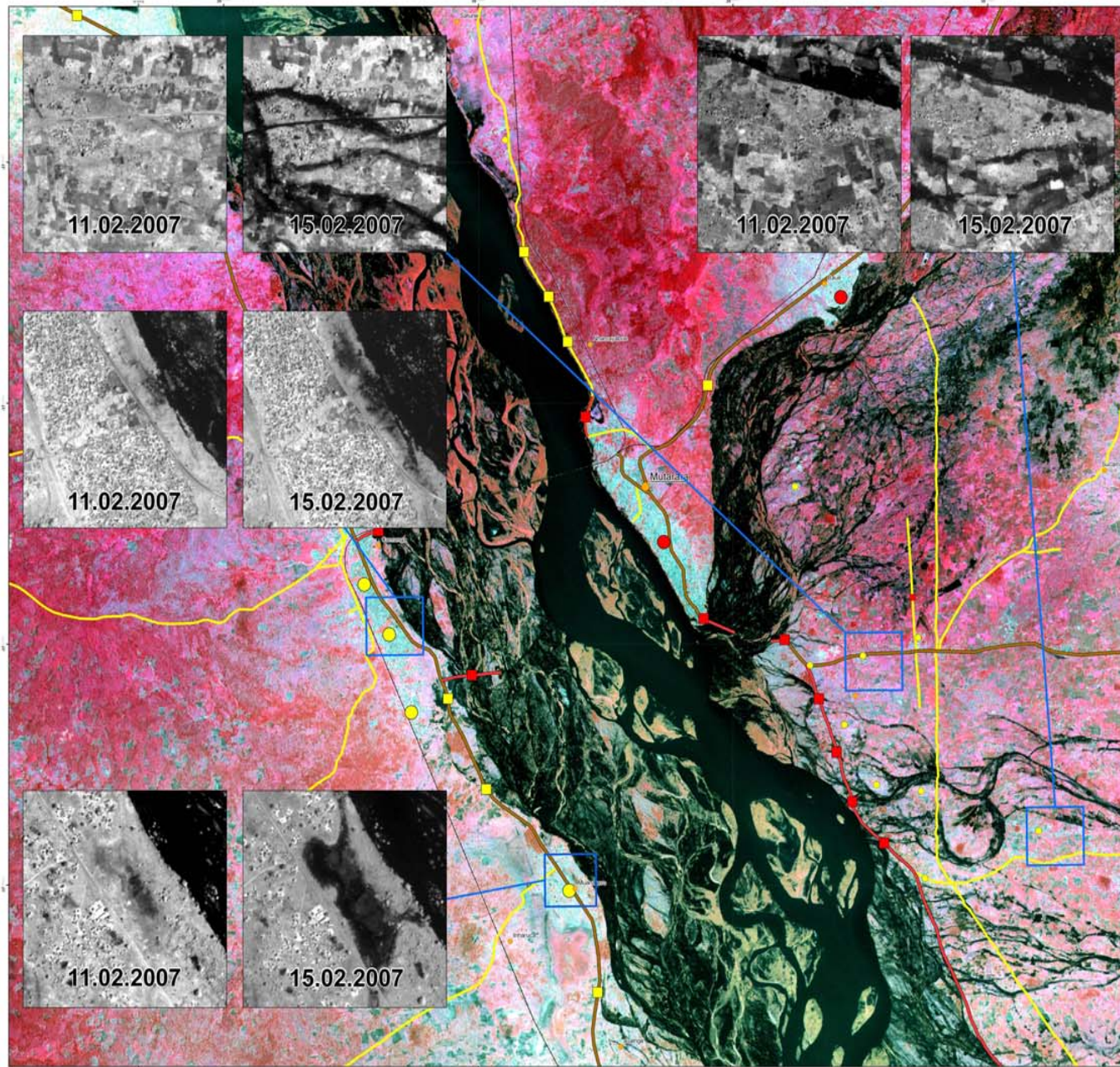
**GIS &
TECHNICAL
KNOWLEDGE**

**DECENTRALIZED
& STAND BY
CAPACITIES**

**IMPLEMENTATION
OF MITIGATION
PROGRAMMES**

ANALYSIS

ACTION



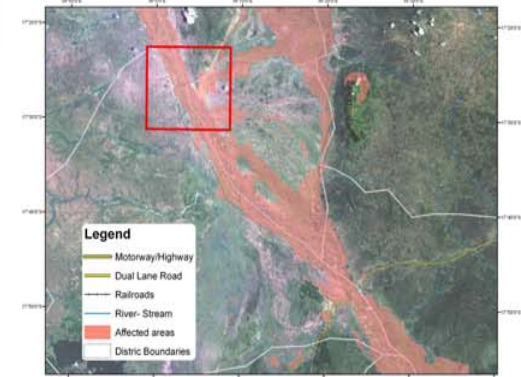
BACKGROUND: FORMOSAT FALSE COLOUR PAN-SHARPENED (11.02.2007 - 2m)
FRAMES: FORMOSAT PANCHROMATIC COMPARISON (2m - approx 1:6,000 map scale)

N
 Datum: WGS84
 Projection: UTM
 Zone: 36 S



Print dimensions at 1:22,000
 ISO A0

MOZAMBIQUE ZAMBEZI FLOOD MONITORING MUTARARA ANALYSIS



- Legend**
- Motorway/Highway
 - Dual Lane Road
 - Railroads
 - River-Stream
 - Affected areas
 - District Boundaries

MUTARARA PRIORITY AREA

- Legend**
- Road - Accessible
 - Road - Not accessible
 - Trail - Accessible
 - Trail - Not accessible
 - Railroad ?
 - Village
 - Town
 - District Capital
 - Point at risk of future damage
 - Built-up area - partially flooded
 - Built-up area - severe flood risk
 - Road - partially flooded
 - Road - severe erosion risk
 - Settlements - severe flood risk
 - Trail - partially flooded
-

Data source information

Source for Vector Map Level 0 (VMAPO) datasets was the United States National Imagery and Mapping Agency (1:1,000,000 – Accuracy +/- 400 m).

Toponymic Information is based on the Geographical Names DataBase, containing official standard names approved by the United States Board on Geographic Names and maintained by the National Geospatial-Intelligence Agency. More information is available at the Products and Services link at www.nga.mil. The National Geospatial-Intelligence Agency name, initials, and seal are protected by 10 United States Code Section §445.

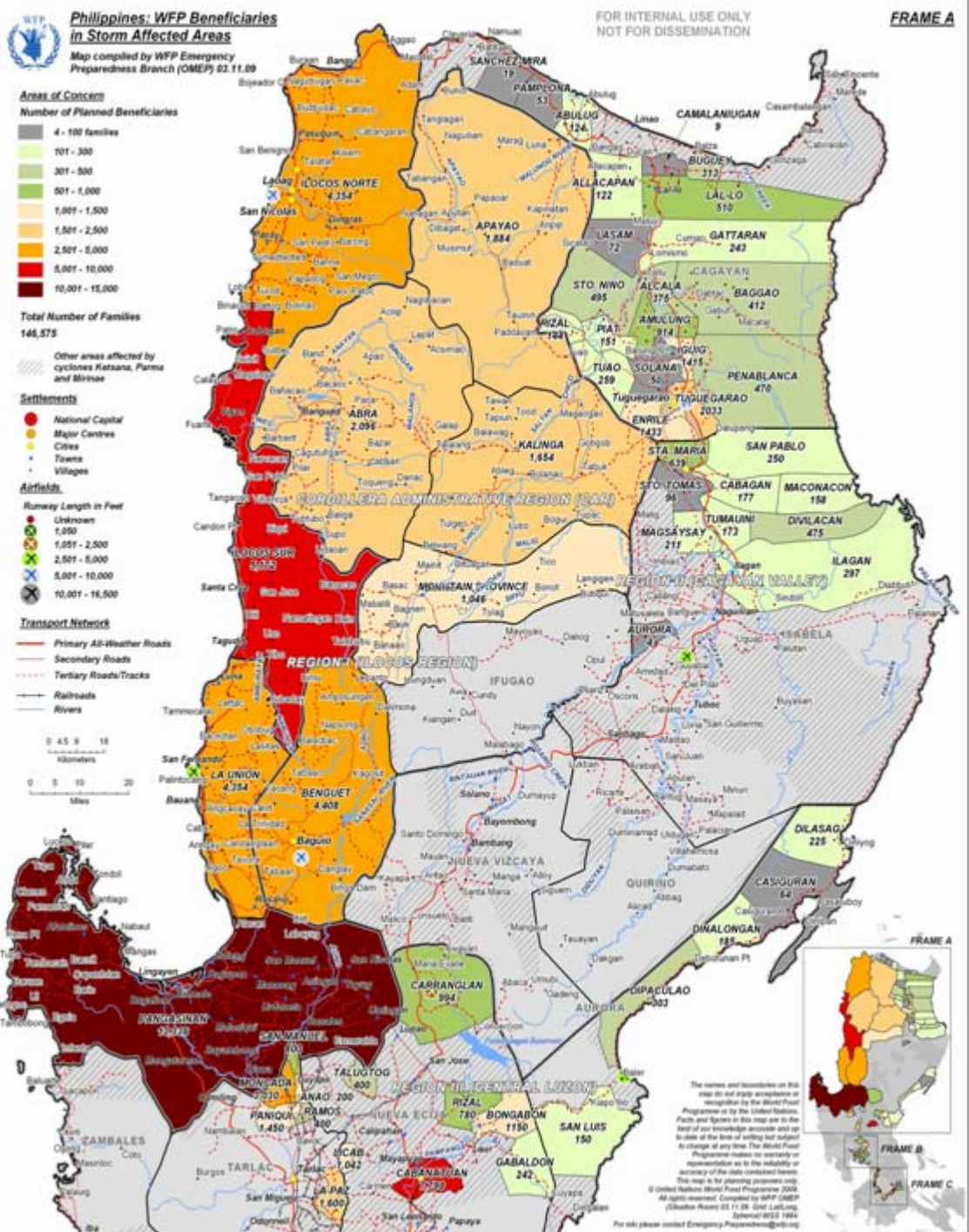
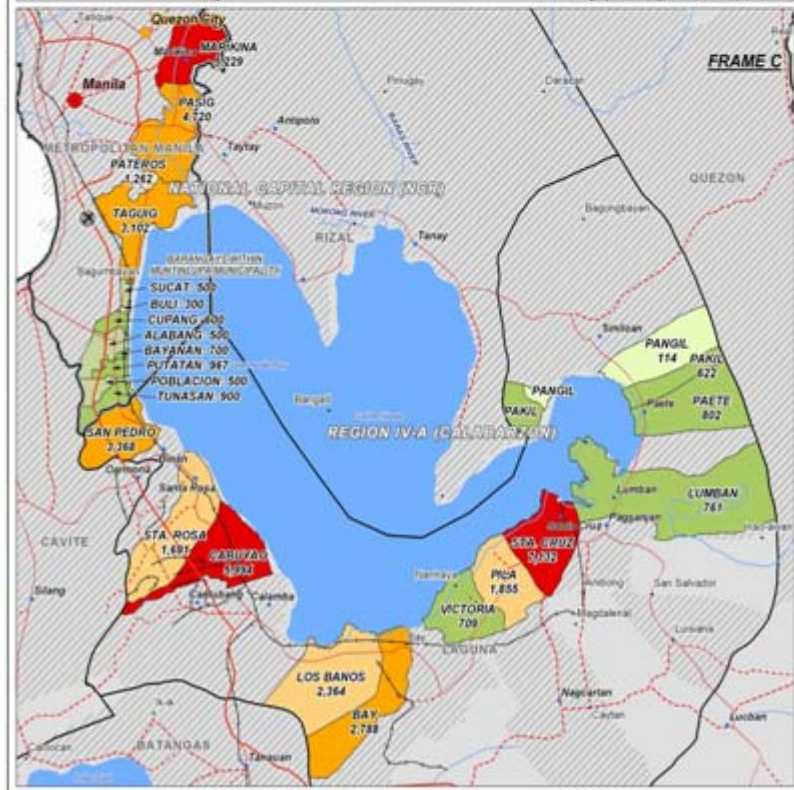
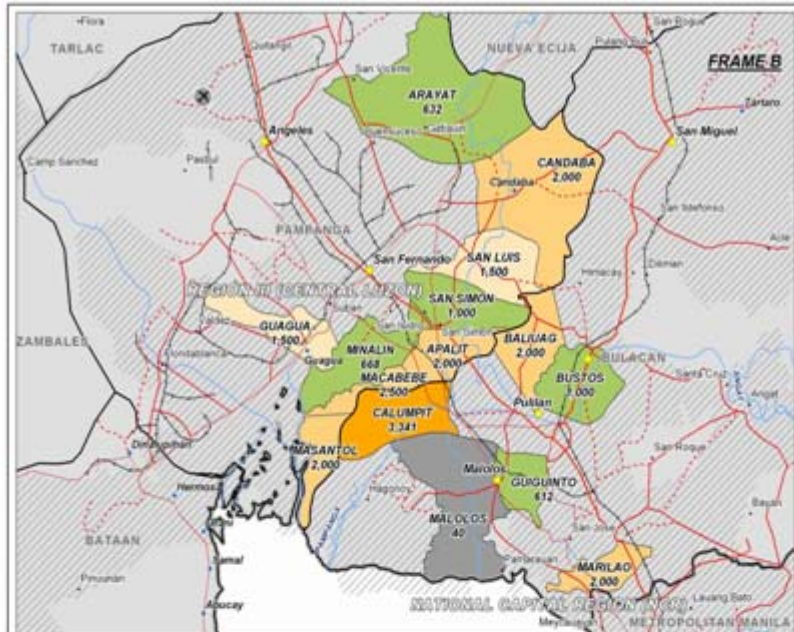
Second Administrative Level Boundaries Dataset, Copyright © United Nations 2002-2005. The source map has been provided by UNESCO (1987) through UNEP GRID and modified by UN (2005). All rights reserved.

Landsat scene: NASA Landsat Program, 2004, Landsat ETM+ scene, Ortho GeoCover, USGS, Sioux Falls, 12/30/2000. Source for this dataset was the Global Land Cover Facility, www.landcover.org

Water bodies extraction and Vector data updating performed using the following images acquired through the International Charter "Space and Major Disasters" with the support of UNOSAT and RESPOND/DLR:
 Radarsat February 12, 2007
 Radarsat March 26, 2006
 Formosat February 11, 2007 Copyright NSPO - 2007, distributed by Spot Image S.A.
 Formosat February 15, 2007 Copyright NSPO - 2007, distributed by Spot Image S.A.

Produced by ITHACA in collaboration with World Food Programme (February 21, 2007)







World Food Programme - ODAP Branch

Bangladesh: Cyclone SIDR Areas of Concern



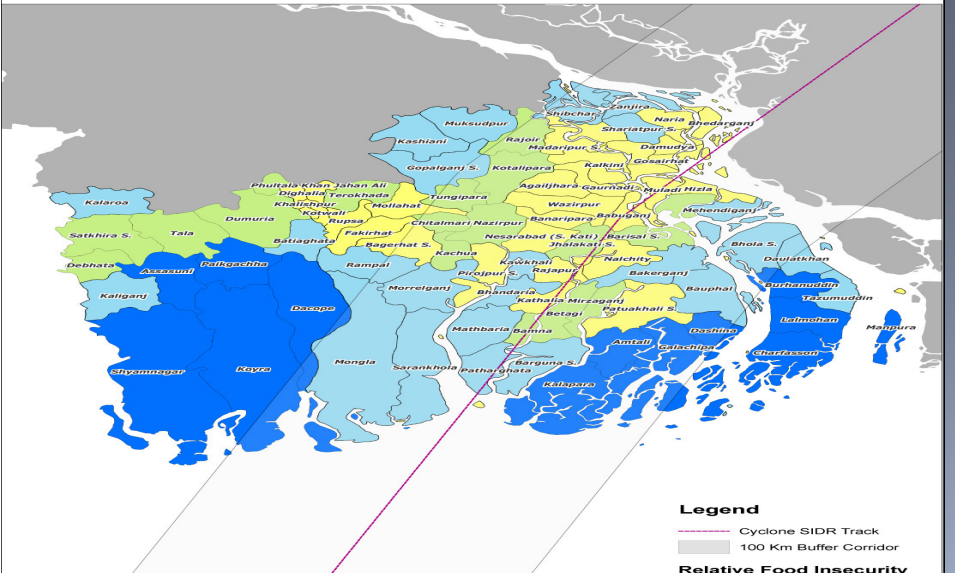
District	Area of Concern	Relative Food Insecurity
Chittagong	High	Very High
Comilla	Moderate	High
Dhaka	Moderate	High
Feni	Moderate	High
Khulna	Moderate	High
Moulvibazar	Moderate	High
Rangpur	Moderate	High
Sylhet	Moderate	High
Tangail	Moderate	High
Barisal	Moderate	High
Chandernagore	Moderate	High
Chattogram	Moderate	High
Cox's Bazar	Moderate	High
Dhaka	Moderate	High
Feni	Moderate	High
Khulna	Moderate	High
Moulvibazar	Moderate	High
Rangpur	Moderate	High
Sylhet	Moderate	High
Tangail	Moderate	High
Barisal	Moderate	High
Chandernagore	Moderate	High
Chattogram	Moderate	High
Cox's Bazar	Moderate	High



World Food Programme - ODAP Branch

Bangladesh: Areas of Concern and Food Security after Cyclone SIDR

Map prepared by Emergency Preparedness and Response Branch (ODAP) 20.11.2007



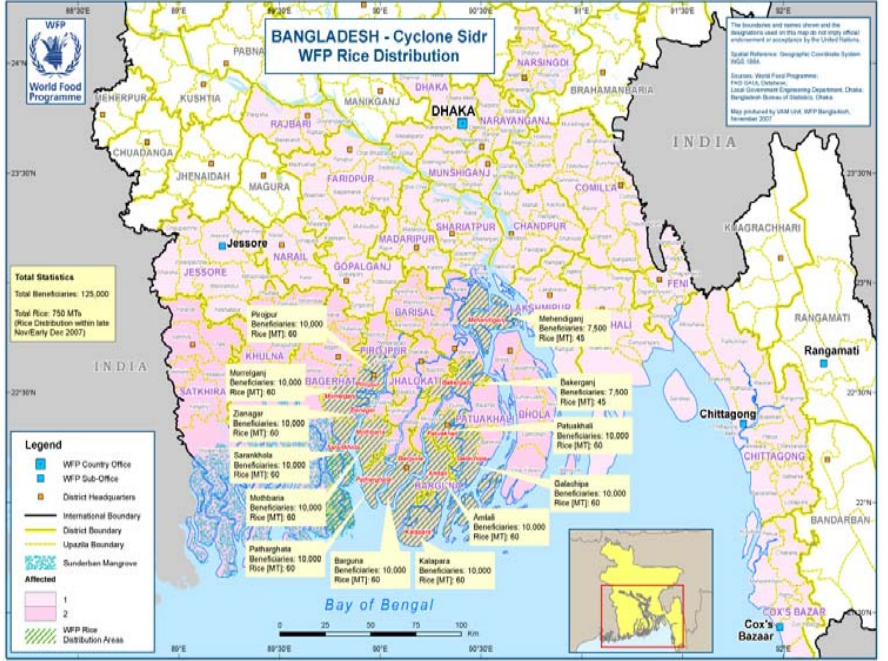
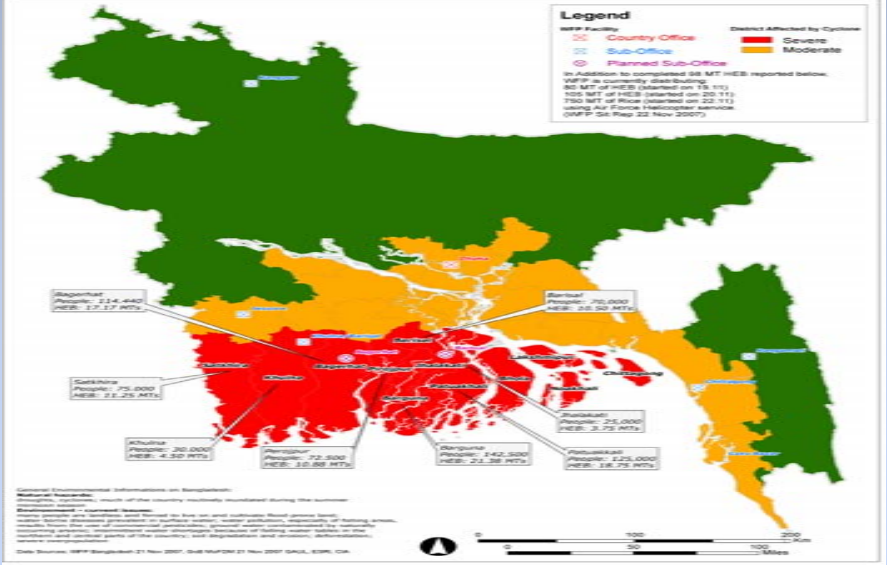
Data Source: Boundaries and Names: GISD ITDS, Food Security: VAM 2004

Notwithstanding any reference on this map, the World Food Programme or United Nations, The World Food Programme makes no warranty or representation as to the validity or accuracy of the data contained herein. Figures on this map are approximate and are to be used to the best of our knowledge.



WFP Food Assistance by District in Bangladesh after Cyclone SIDR

World Food Programme - ODAP Branch





THANK YOU!!