

A close-up photograph of a young boy's face as he looks through a narrow opening in a green-painted metal door. The paint on the door is peeling and worn, revealing a reddish-brown metal underneath. The boy has a serious expression and is wearing a blue and white checkered shirt. The background is dark and out of focus.

WFP in Emergencies



World Food Programme



WFP in Emergencies

Saving lives and protecting livelihoods

Expertise in many areas

Collaboration

Early focus - emergency assistance to recovery

Deep field presence





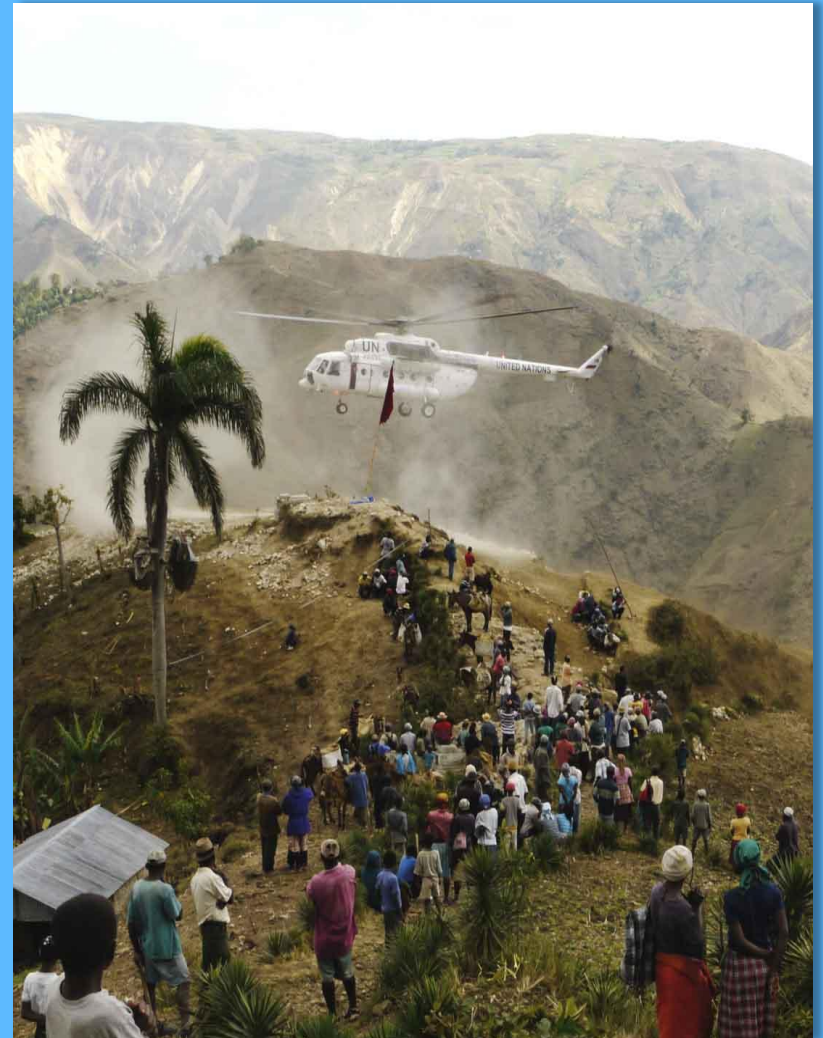
WFP Emergencies Operations EMOPs 2010 Included ...

EMOPs Approved:
43

Food Commitment:
1.9 million MT

Total cost:
2.1 billion dollars

People Assisted:
approx 30 million





WFP Emergencies 2010 Included ...

- Haiti earthquake, cholera
- Kyrgyzstan/Uzbekistan Crisis
- Philippines typhoon Megi
- Benin floods
- Niger food security crisis
- Sahel food security crisis
- Myanmar typhoon Giri
- Pakistan floods





WFP Emergency Response Levels

Level 1 **Country Office** management

Level 2 **Regional Bureau** support

Level 3 large scale **Corporate Emergencies**





WFP Corporate Emergencies 2010

Pakistan Floods

20 million people affected
7 million WFP beneficiaries

Haiti Earthquake

over 4 million people affected
4 million WFP beneficiaries

Niger Food Security Crisis

7.9 million people affected
5.8 million WFP beneficiaries





WFP Emergency Response

Rapid Deployment

- * Food
- * Staff
- * Equipment

Emergency Funding

- * Immediate Response Account
- * Advance Funding
- * Flash Appeals
- * CERF

Coordination

- * Disaster Management Teams
- * IASC - Humanitarian Country Teams
- * Clusters
- * Task Forces - Situation Room



Emergency PREPAREDNESS & Response EPR

Strengthening

Lessons
Learned

Trainings

Guidance

EPweb
Crisis
Pages

Crisis
Mapping

Task
Force
Support

Supporting Crisis Response

Applying Technology

Info
Management

GIS

Satellite
Analysis

Inter-agency

RB and CO

External
Partnerships

Early Warning

Food
Security

EPRP

Hazard
Analysis

Analysing & Planning

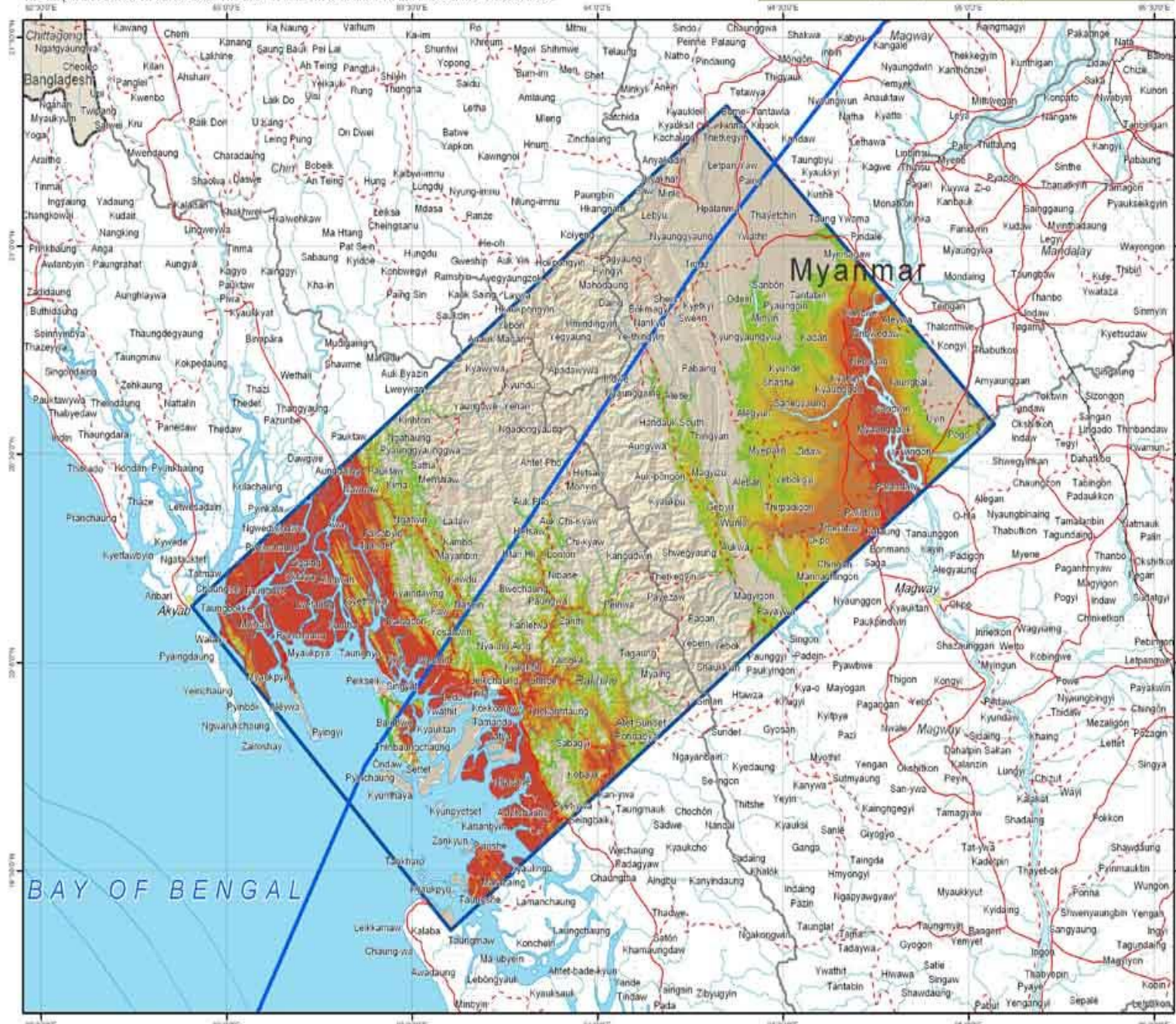
Collaborating

Myanmar - Cyclonic Storm Giri - Qualitative flood hazard map

The map is not based on actual data. The area of concern is defined on the basis of the forecast track.

Flood hazard analysis is based only on Digital Elevation Model (SRTM) and hydrographic network analysis.

Publication date: 22/10/2010



Legend

- Flood hazard**
 - Area of concern
 - Forecasted track
 - Low
 - High
- Road**
 - Highway
 - Primary
 - Local Urban
 - Trail
 - Unroaded
 - Railroad
- Populated places**
 - National capital
 - Capital of a political entity
 - Province center
 - Town or village
 - Settlement
 - Airports
 - Airfield/strip
 - HELZ
 - Unspecified
- River/Stream**
 - Perennial
 - Non-perennial
 - Intermittent
 - 1st order
 - Coastline
 - Build-up Area
 - Inland Water
- Adm. boundary**
 - International
 - 1st order
 - Coastline
 - Build-up Area
 - Inland Water

1:1,000,000 on A3 paper format
0 8 16 24 32 40 km

Geographic Coordinates - WGS84

Source for Vector Map-level 0 (VMAP0) datasets was the United States National Imagery and Mapping Agency (NIMA) images are available in the LAOS2 archive through FTP on the publicly accessible server gov/naip and sourcefiles on this map do not imply acceptance or recognition by the World Food Programme or by the United Nations. Facts and figures in this map are accurate and up to date to the best of our knowledge at the time of writing but subject to change at any time. The World Food Programme makes no warranty or representation as to the reliability or accuracy of the data contained herein.

This map is for planning purposes only.
© United Nations World Food Programme 2007
All rights reserved.





Port-au-Prince Earthquake Affected Areas

Compiled by WFP Emergency Preparedness Branch (OPEP) 19.01.10
GeoEye satellite analysis courtesy of ITHACA

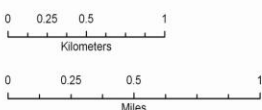
Areas of Concern

- Collapsed Building
- Damaged Infrastructure
- ▲ Landslide
- Spontaneous Camp
- Hospitals
- Bridges
- WFP Distribution Hubs
- Other distribution points

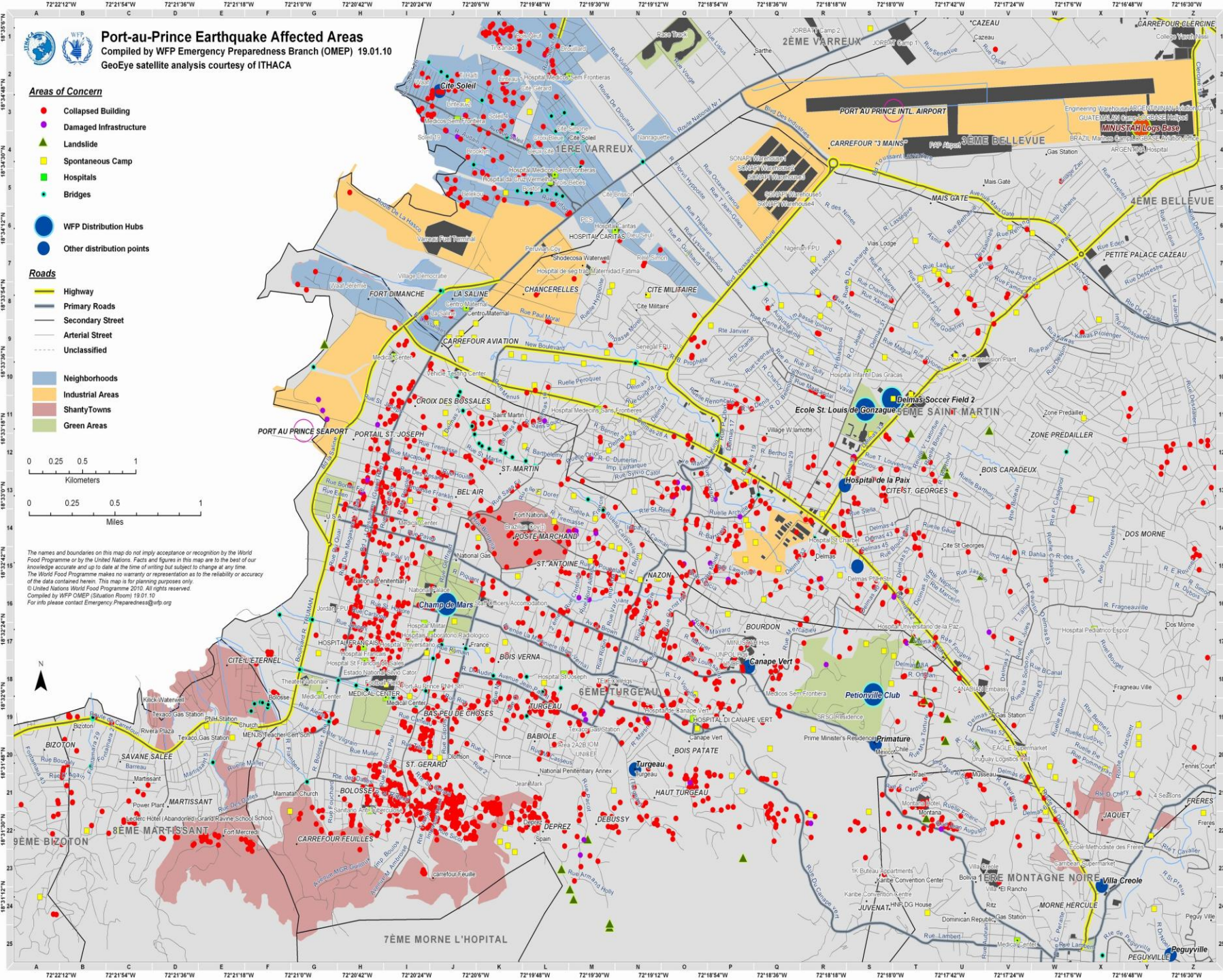
Roads

- Highway
- Primary Roads
- Secondary Street
- Arterial Street
- Unclassified

- Neighborhoods
- Industrial Areas
- Shanty Towns
- Green Areas



The names and boundaries on this map do not imply acceptance or recognition by the World Food Programme or by the United Nations. Facts and figures in this map are to the best of our knowledge accurate and up to date at the time of writing but subject to change at any time. The World Food Programme makes no warranty or representation as to the reliability or accuracy of the data contained herein. This map is for planning purposes only.
© United Nations World Food Programme 2010. All rights reserved.
Compiled by WFP OPEP (Situation Room) 19.01.10
For info please contact Emergency.Preparedness@wfp.org

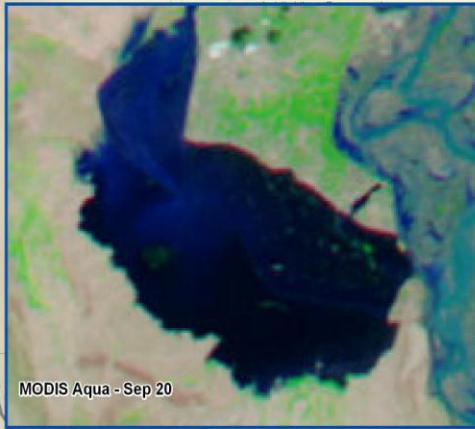
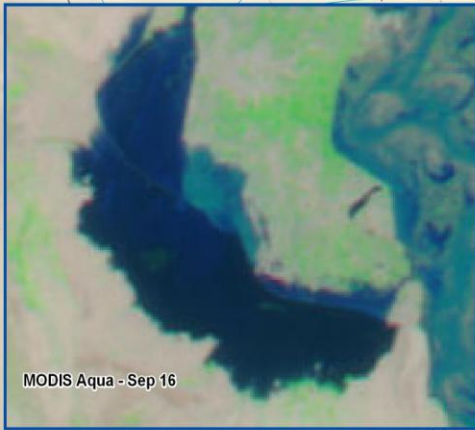
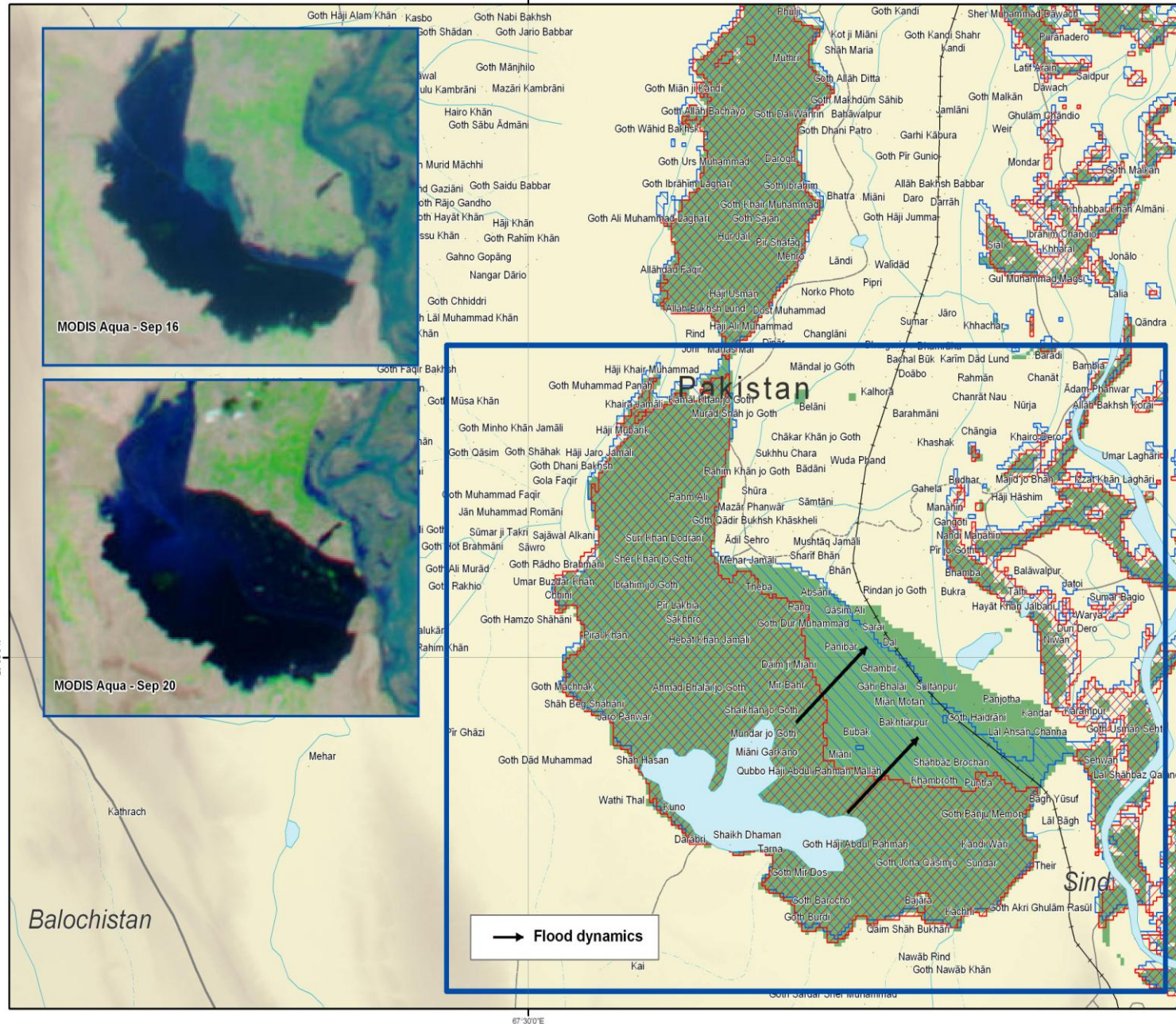


Pakistan floods - Manchar Lake area

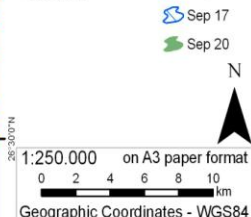
Glide number: FL-2010-000141-PAK

MODIS satellite imagery automatic processing Multi temporal analysis (Sep 16 - 17 - 20)

Publication date: 20/09/2010



- ### Legend
- | | |
|----------------------------|----------------------|
| Populated places | Adm. boundary |
| ★ National capital | — International |
| ● Capital political entity | — 1st order |
| ● Province capital | — 2nd order |
| ● Town or village | — 3rd order |
| ■ Settlement | — Coastline |
| ■ Built-up Area | — River/Stream |
| ✈ Airdrome | — Perennial |
| ✈ Airfields/Airstrips | — Non perennial |
| ● Unspecified | — Inland Water |
| — Railroad | — Satellite water |
| | — Sep 16 |
| | — Sep 17 |
| | — Sep 20 |



Source for Vector Map level 0 (VMAP0) datasets was the United States National Imagery and Mapping Agency. MODIS images are available in the LAADS archive through FTP on ftp://ladsftp.nascom.nasa.gov/. Names and boundaries on this map do not imply acceptance or recognition by the World Food Programme or by the United Nations. Facts and figures in this map are accurate and up to date to the best of our knowledge at the time of writing but subject to change at any time. The World Food Programme makes no warranty or representation as to the reliability or accuracy of the data contained herein. This map is for planning purposes only. © United Nations World Food Programme 2010. All rights reserved.

Produced by **ITHACA** in cooperation with **WFP**

→ Flood dynamics



The Cluster Approach

Established in 2006 to strengthen emergency response :

- Ensuring global capacity, including providers of last resort
- Ensuring predictable leadership
- Enhancing partnerships and collaboration
- Strengthening accountability
- Improving field-level coordination

Activated by the HC, in consultation with HCT and host government



WFP Cluster Co-Lead Food Security Cluster

Goal: to support food assistance and the protection and urgent restoration of agriculture-based livelihoods.

- * Endorsed by the IASC in December 2010
- * FAO and WFP are co-leading the cluster
- * Global cluster cell being established at WFP HQ



WFP Cluster Lead Logistics Cluster

Leadership role:

in coordination and information management

Provision of common services such as:

UNHAS (air services), Transport fleet (trucks, boats),
Warehousing, Cargo tracking, customs facilitation



FOCUS ON



Dec 02, 2010

LET Provides Surge Capacity in Haiti

The day after the Government of Haiti confirmed an outbreak of Cholera in the country, in a Department just north of the capital Port-au-Prince, a medical doctor working with WHO/PAHO, present at the first meeting of the Inter-Cluster Coordination Cell at Logbase, spoke out what everyone was thinking: "Let's not fool ourselves. This will come to Port-au-Prince very quickly".

[read more](#)



Nov 16, 2010

Benin River Assessment

The Logistics Cluster was activated in Benin following severe flooding. Due to heavy rains the water levels in rivers and lakes surged and tens of thousands of people lost their homes and livelihoods, in particular in low lying lands and areas adjacent to rivers and lakes.

[read more](#)



Oct 27, 2010

Global Logistics Cluster - Bi-annual Meeting in Nairobi

The Global Logistics Cluster is holding a global bi-annual meeting in Nairobi, Kenya from November 8th to 9th.

[read more](#)



CURRENT OPERATIONS

BENIN

D.R.C.

GAZA

HAITI

INDONESIA

KYRGYZSTAN

MOZAMBIQUE PREPAREDNESS

OPERATIONS

MYANMAR

NIGER

PAKISTAN

PANAMA

SOMALIA

SRI LANKA

SUDAN

YEMEN

Past Operations



NEWS

Jan 21, 2011

MYANMAR

Logistics Cluster

342Kb [download](#)

Situation Report - 20 January 2011

Myanmar Operation

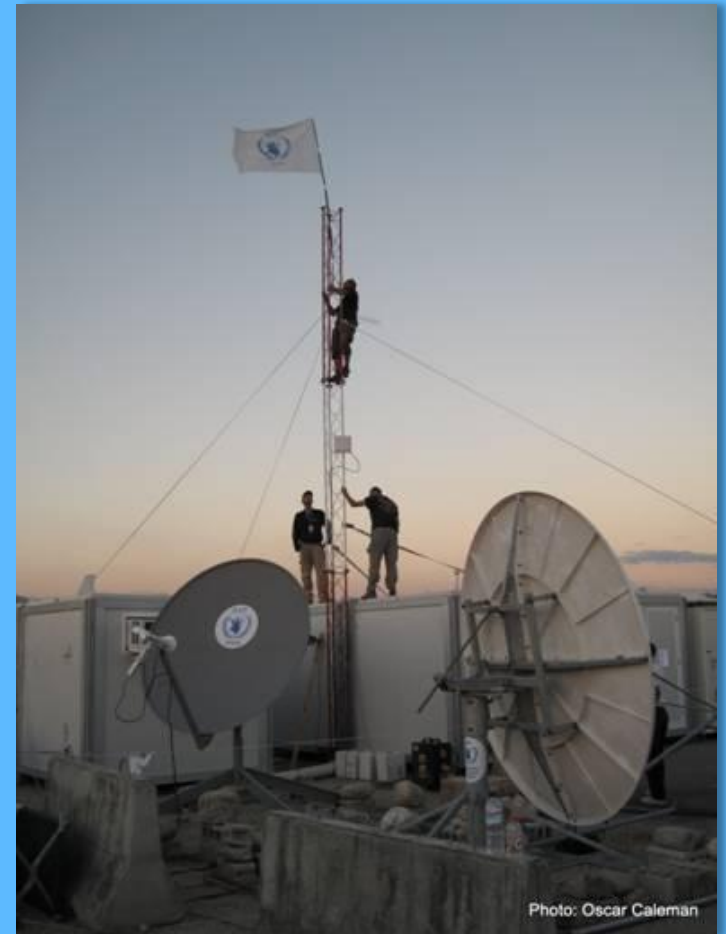
NEXT EVENTS

Logistics Cluster Meeting - Gonaives
WFP Office - Jan 21, 2011



WFP Cluster Lead Emergency Telecom Cluster

- Deployment supplies and pre-positioning
- Cost effective solutions in the field
- Ensuring smooth emergency-recovery transition





MEMBERS SECTION

QUICK LINKS TO FORUM:

[Niger](#)

[Pakistan](#)

[Côte d'Ivoire](#)



UNHAS flight landing in a dust storm in Niger

Photo credit: WFP/ Modeste Goehade

Download the 2011 IT Emergency calendar [here](#)



IT Response ITresponse

Cote d'Ivoire OCHA
Humanitarian Report #10
<http://bit.ly/gKDCeO>
yesterday · reply

Cote d'Ivoire OCHA
Humanitarian Report #7
<http://bit.ly/fwmwMP>
11 days ago · reply

Cote d'Ivoire OCHA
Humanitarian Report #8
<http://bit.ly/g9eVBe>
8 days ago · reply

Haiti One Year On:
Technology and the Future of
Humanitarian Aid <http://it.co>



Join the conversation

Points on the map below indicate current IT emergency operations.



PHOTOS

Installation in Diffa, Niger



Join the community



UN Humanitarian Response Depots

Rapid & cost effective 'one stop shop' for emergency response

5 Humanitarian Response Depots (UNHRD) worldwide

Inter-agency cooperation on purchasing, storage, & transport





Enhancing WFP's Emergency Preparedness and Response

- Investing in Learning and Reflection - Lessons Learned exercises
- Updating corporate EPR framework, guidance and tools
- Investing in staff capacity and improving deployment mechanisms
- Review emergency financial mechanisms to ensure efficiency



Thank you !

