
WFP West Africa Regional Bureau

Presentation to the

WFP Executive Board

Second Regular Session of the
Executive Board 2011 (14-17
November 2011)

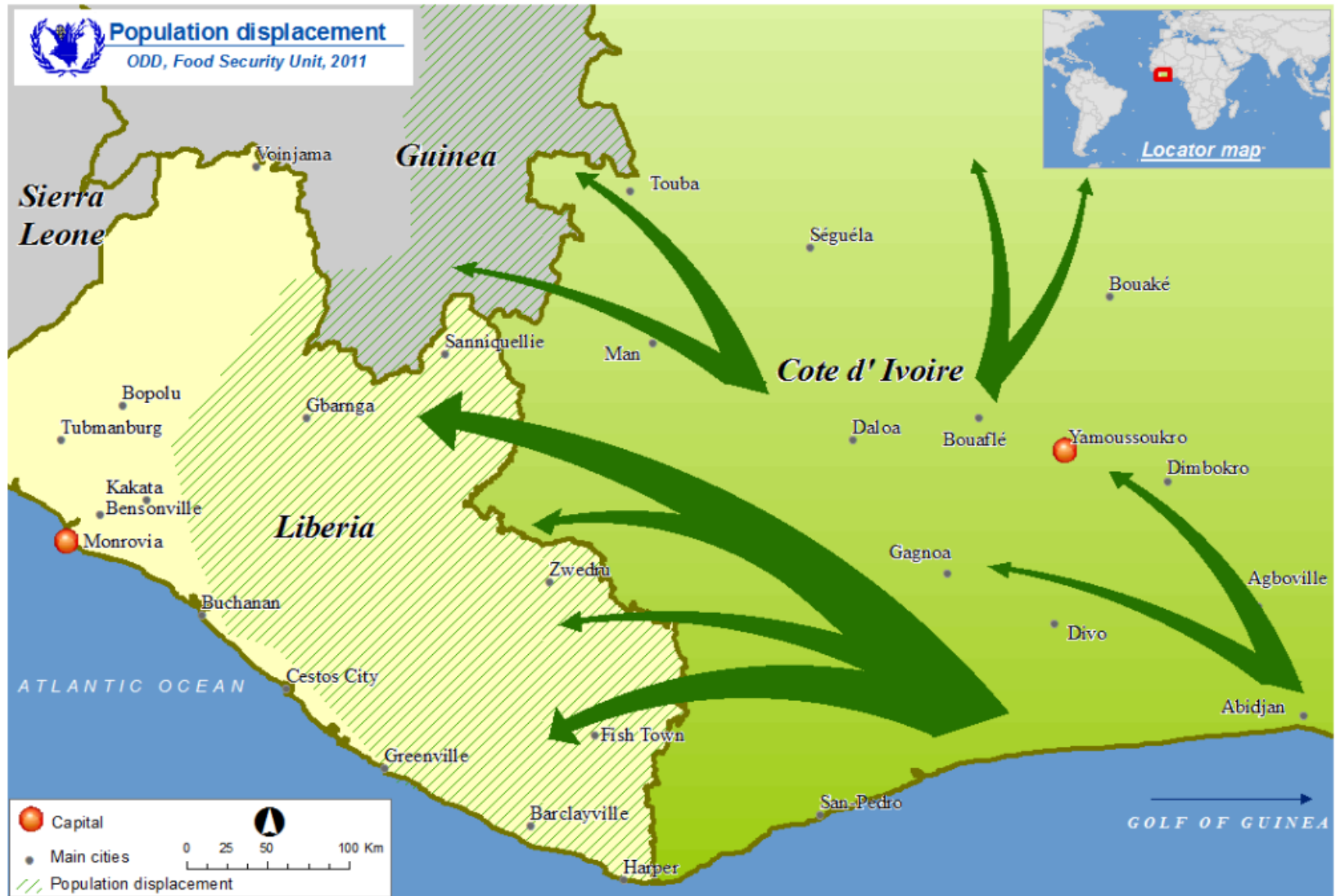


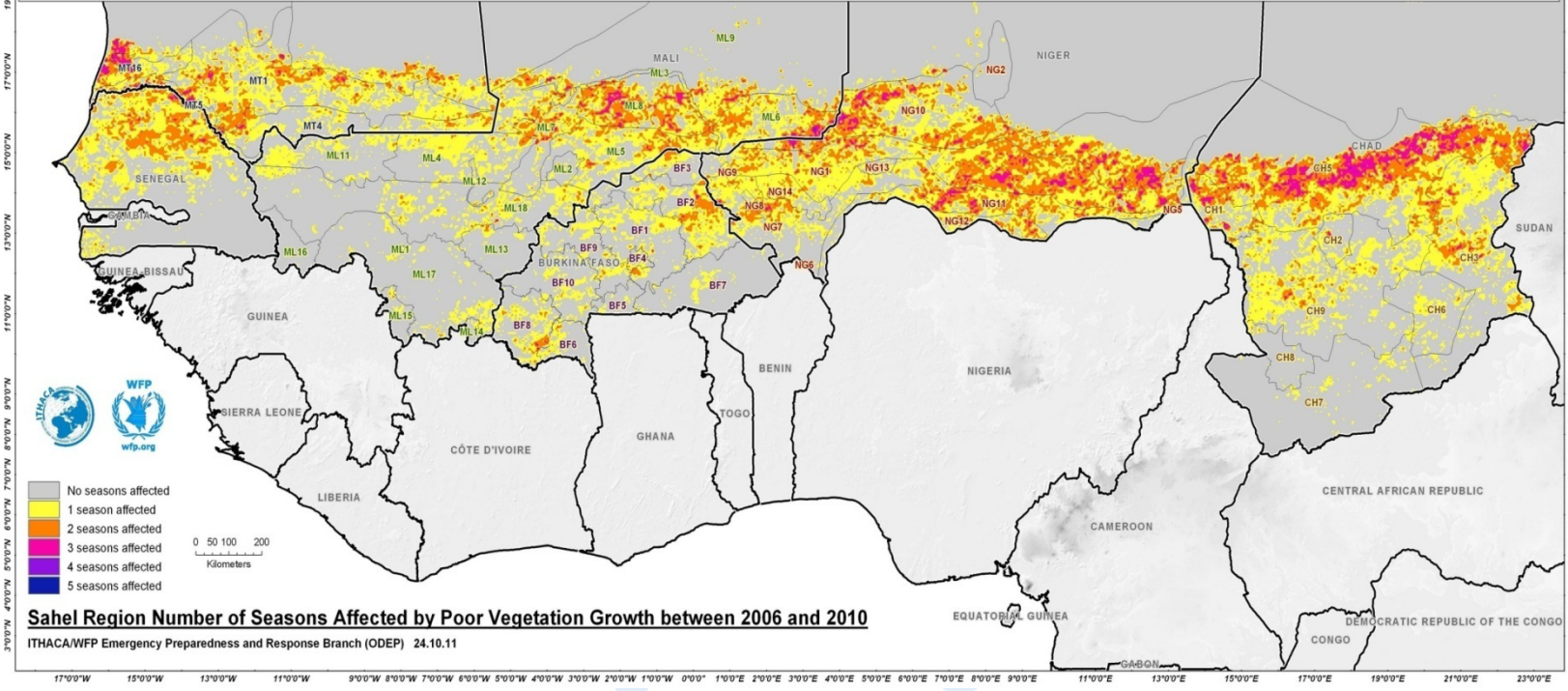
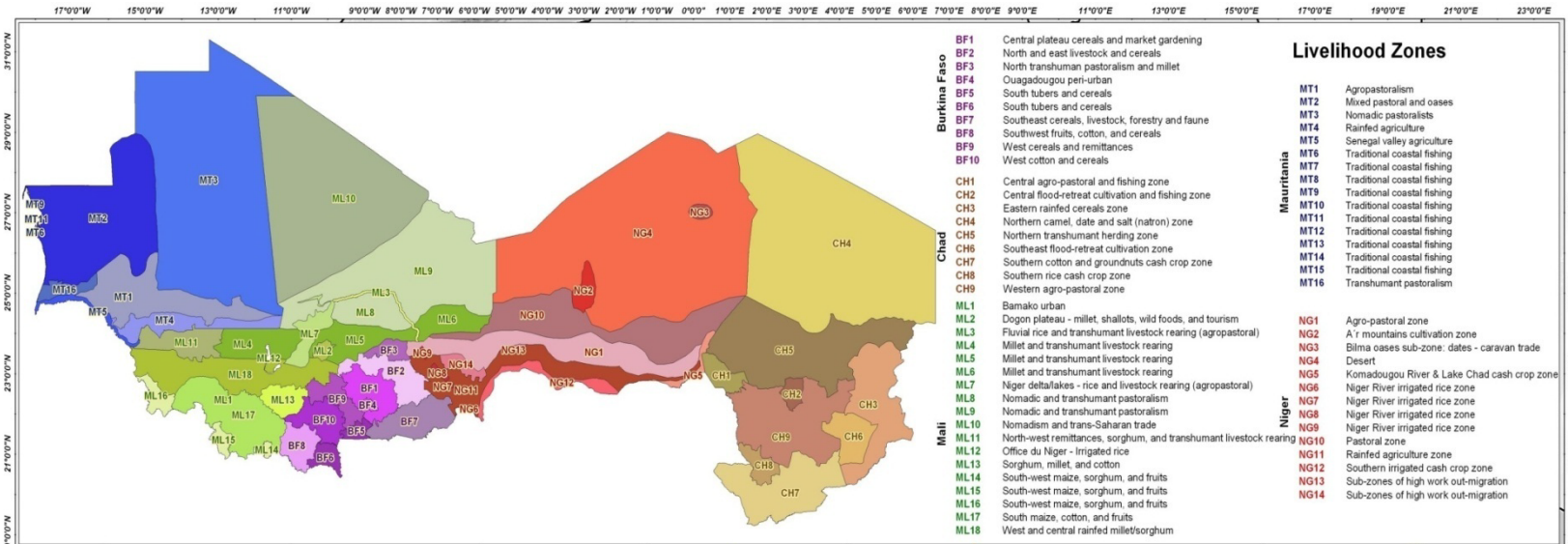
Thomas Yanga
Regional Director, West Africa Regional Bureau

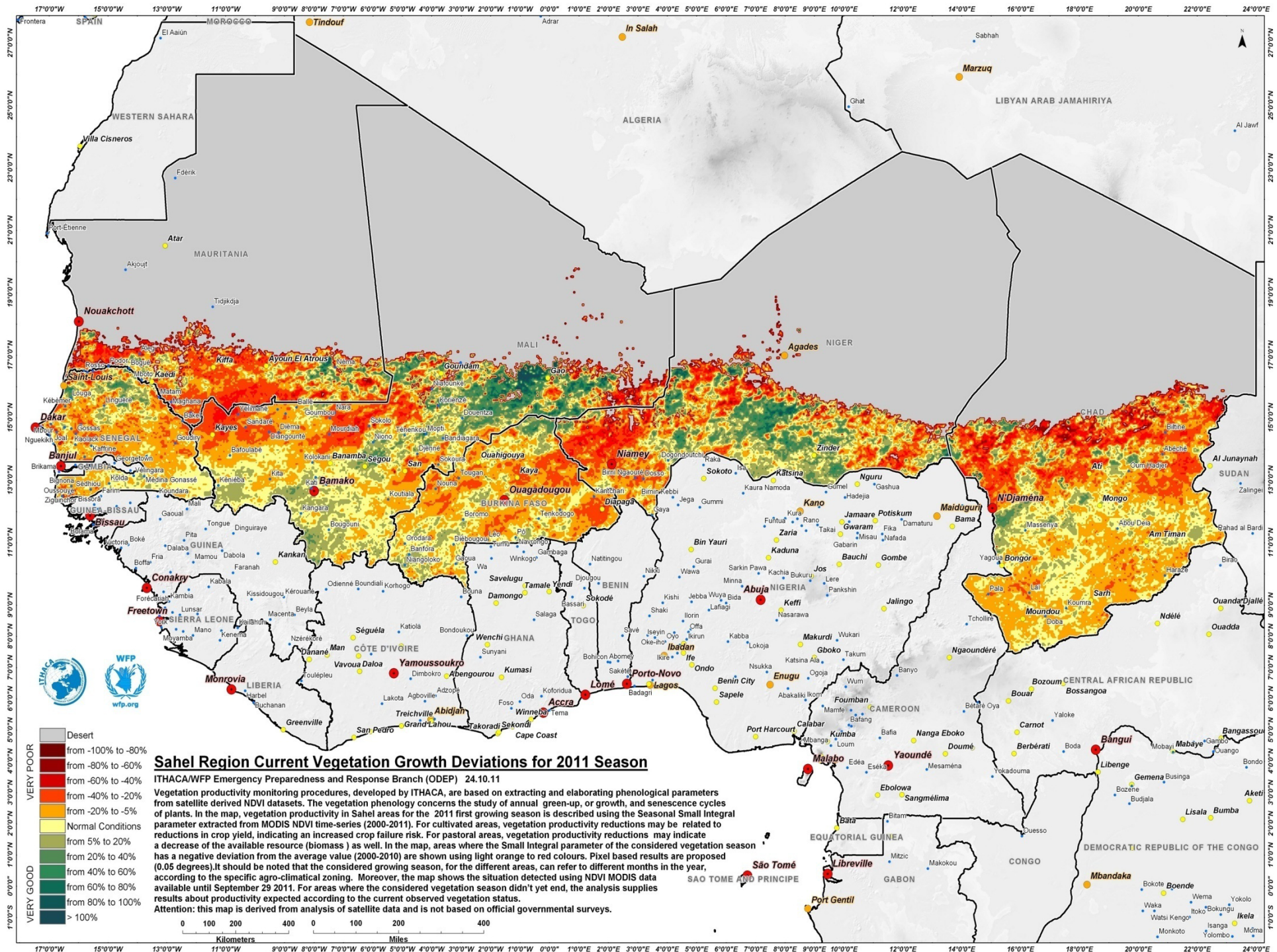


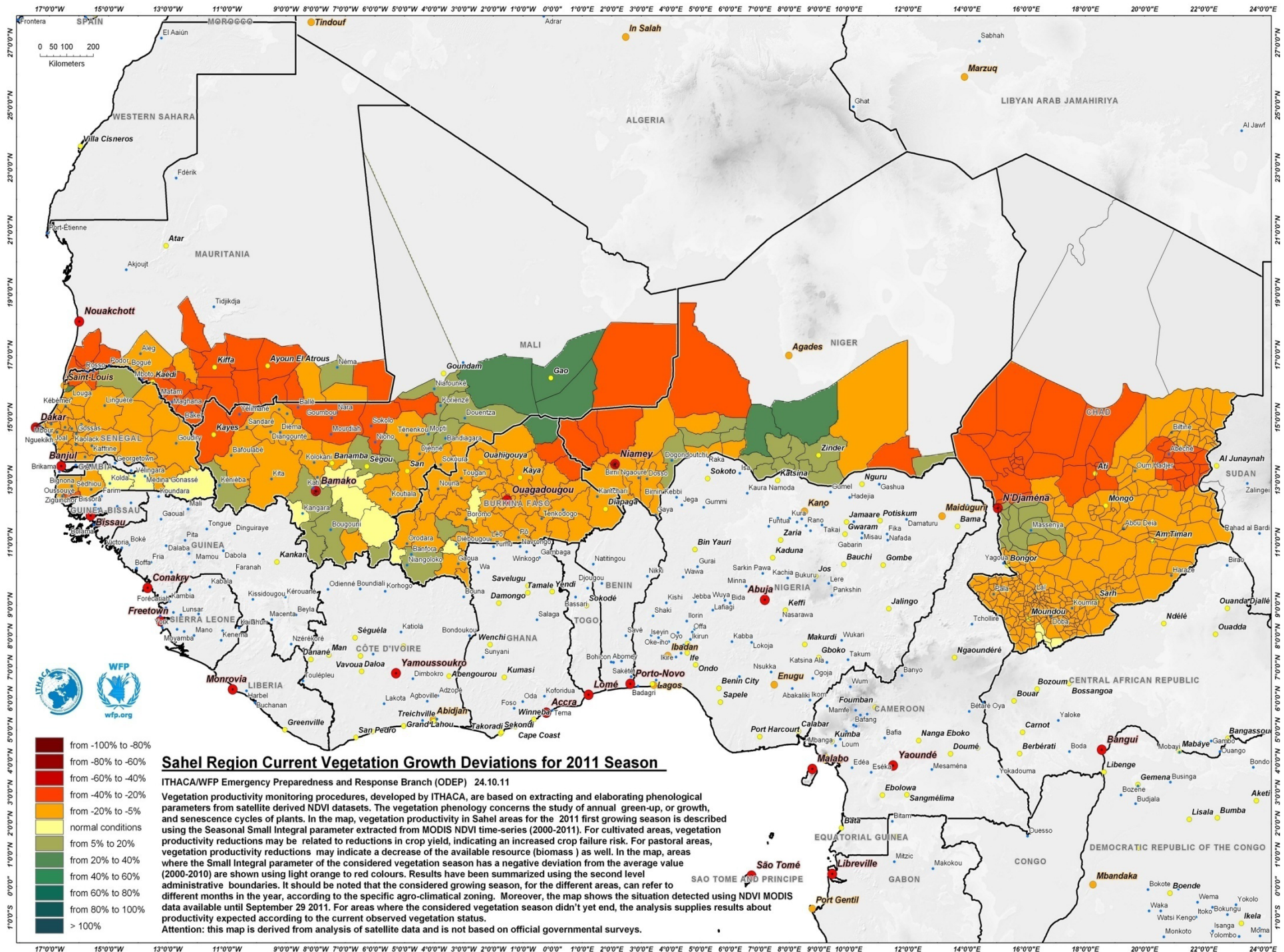
Population displacement

ODD, Food Security Unit, 2011









Sahel Region Current Vegetation Growth Deviations for 2011 Season

ITHACA/WFP Emergency Preparedness and Response Branch (OPEP) 24.10.11

Vegetation productivity monitoring procedures, developed by ITHACA, are based on extracting and elaborating phenological parameters from satellite derived NDVI datasets. The vegetation phenology concerns the study of annual green-up, or growth, and senescence cycles of plants. In the map, vegetation productivity in Sahel areas for the 2011 first growing season is described using the Seasonal Small Integral parameter extracted from MODIS NDVI time-series (2000-2011). For cultivated areas, vegetation productivity reductions may be related to reductions in crop yield, indicating an increased crop failure risk. For pastoral areas, vegetation productivity reductions may indicate a decrease of the available resource (biomass) as well. In the map, areas where the Small Integral parameter of the considered vegetation season has a negative deviation from the average value (2000-2010) are shown using light orange to red colours. Results have been summarized using the second level administrative boundaries. It should be noted that the considered growing season, for the different areas, can refer to different months in the year, according to the specific agro-climatical zoning. Moreover, the map shows the situation detected using NDVI MODIS data available until September 29 2011. For areas where the considered vegetation season didn't yet end, the analysis supplies results about productivity expected according to the current observed vegetation status.

Attention: this map is derived from analysis of satellite data and is not based on official governmental surveys.



Cash transfer distributions in Zinder, Niger/Vigno Hounkanli, WFP Niger



Thank You
