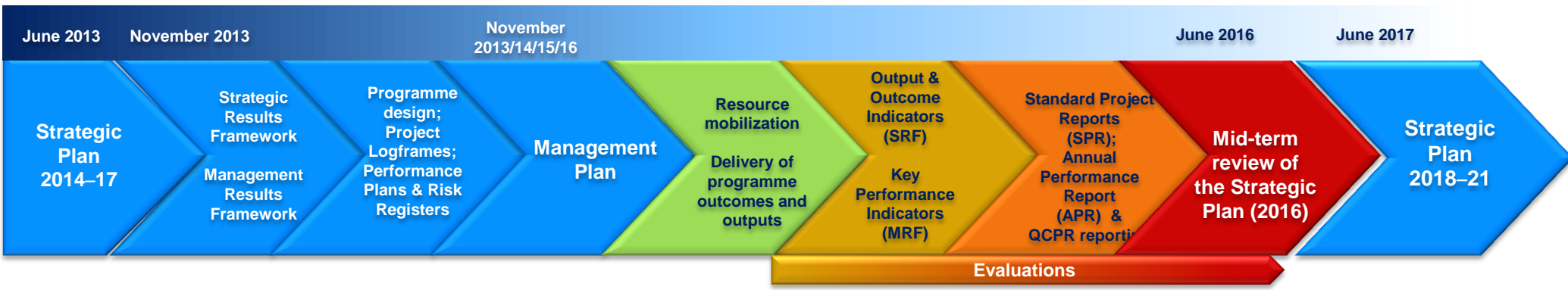


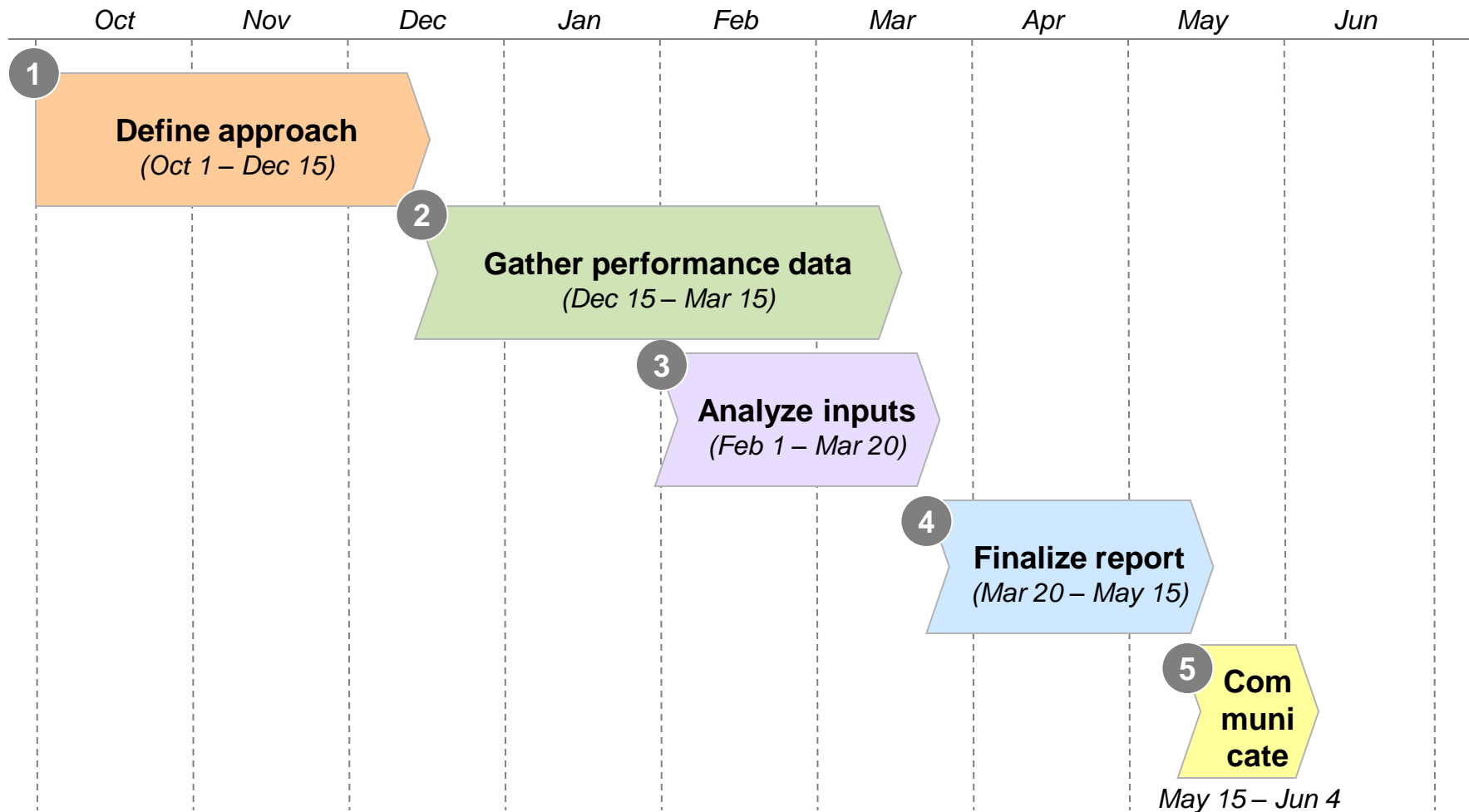
Introduction to WFP Annual Performance Report

9 May 2013

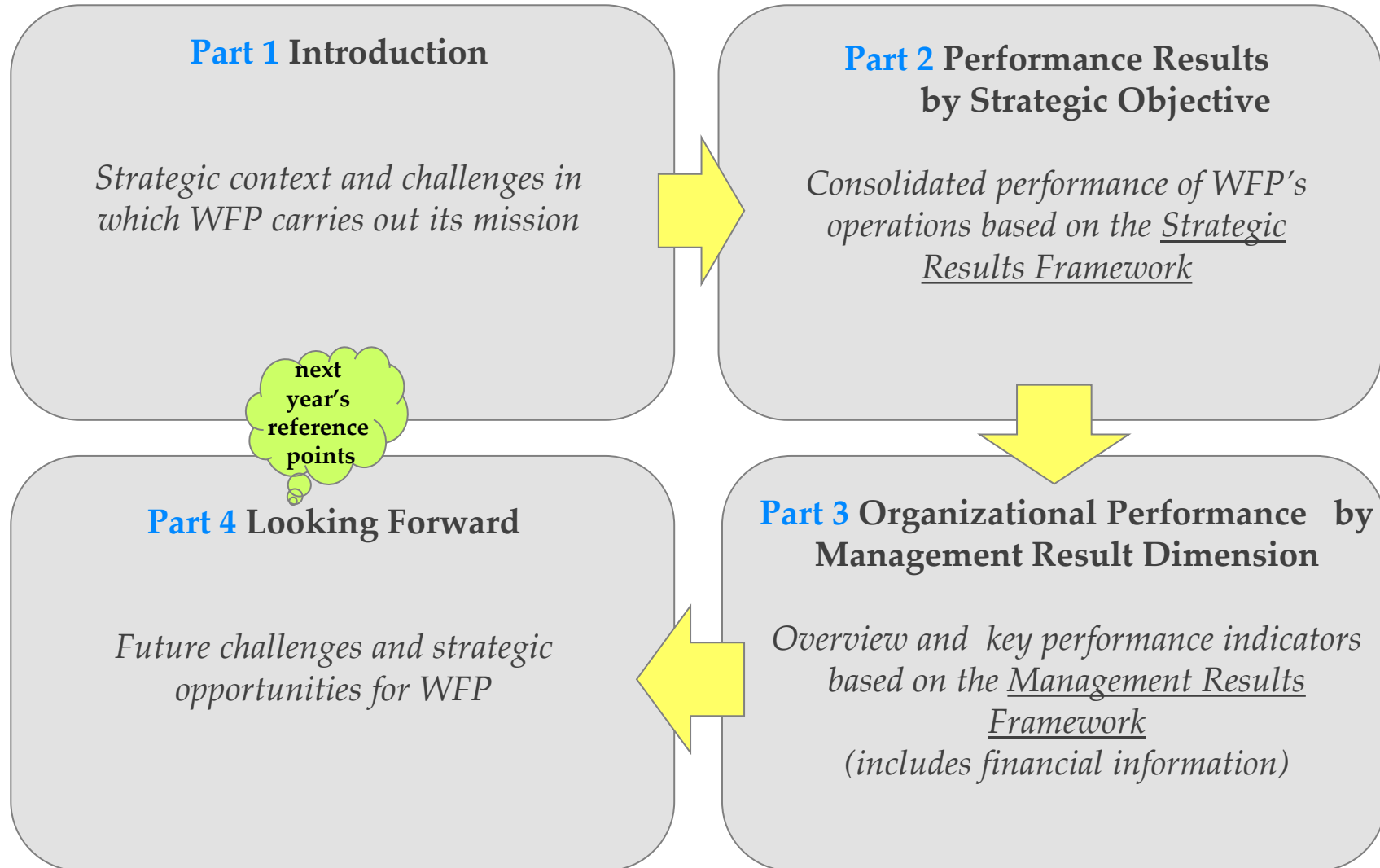
WFP Annual Performance Report's role in performance management cycle



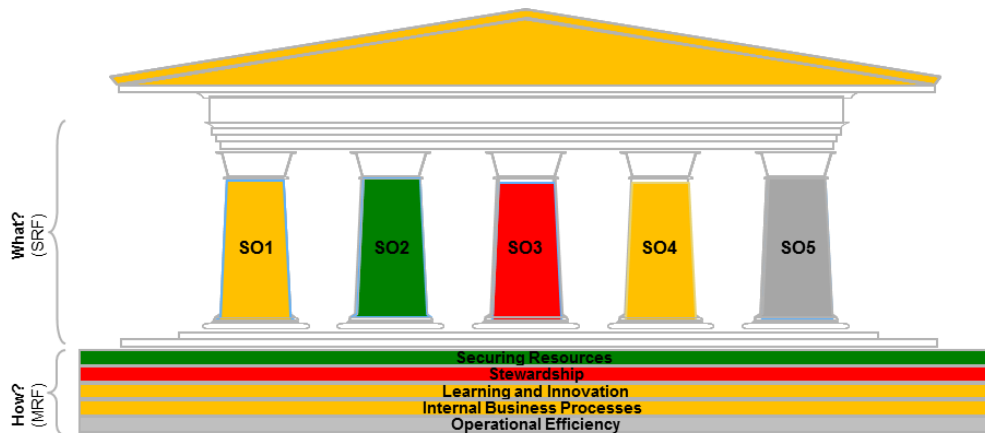
APR process with 5 phases and an overall duration of 8 months



WFP Annual Performance Report: Structure



WFP Annual Performance Report: Assessment of results



(introduced in 2010)



Strategic Objectives

Performance of output and outcome indicators from the Strategic Results Framework

At least one outcome indicator for each Strategic Objective must be reported > 10 projects

Management Result Dimensions

Performance of key performance indicators from the Management Results Framework

Indicators feed into management results leading up to the overall Dimensions

Strong progress

If $\geq 60\%$ of indicator values show improvement

Some progress

If 40-60% of indicator values show improvement

No progress

If $\leq 40\%$ of indicator values show improvement

Insufficient data

Insufficient data for assessment

Key Performance Indicators

KPI achievement vs. target

Measurement depends on KPI type (achievement/reduction/absolute/zero-based)

Management Results

Average of KPI achievement

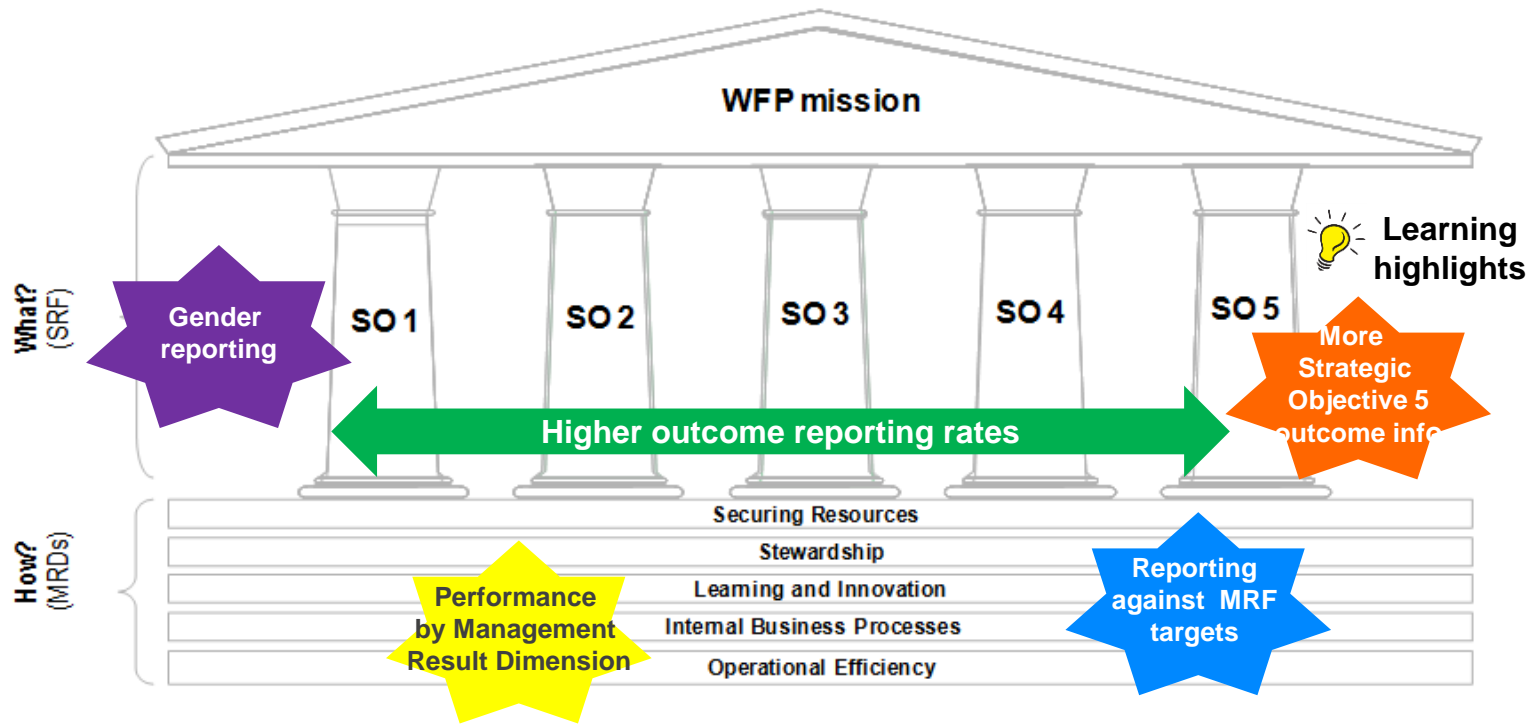
3 ■
2 ■
1 ■

Dimension

Average of result achievement

3 ■
2 ■
1 ■

Annual Performance Report: Improved reporting in 2012



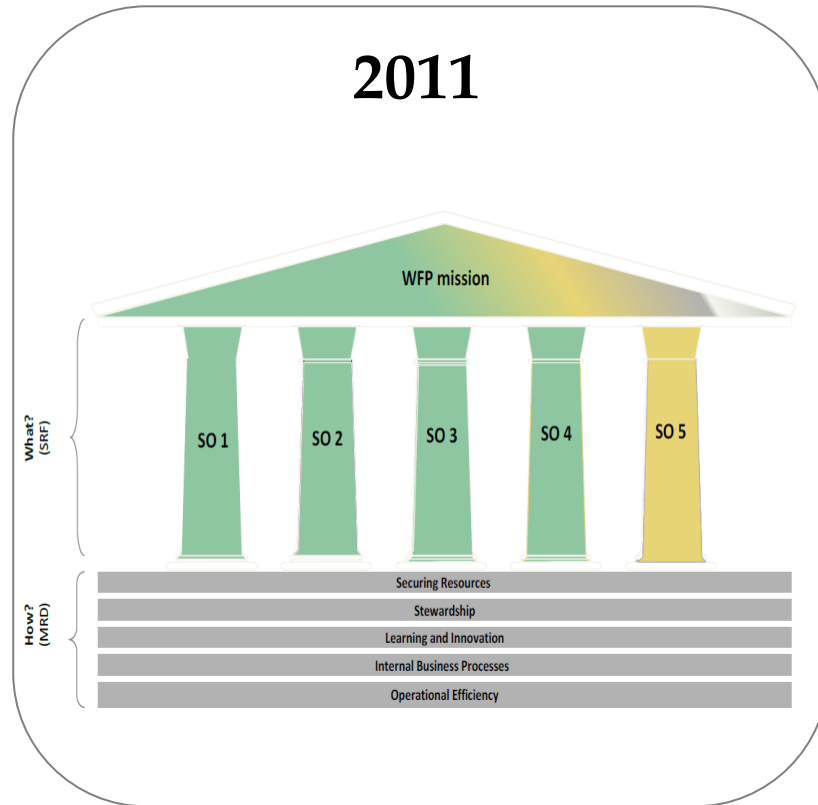
Work in progress...



Revised SRF
M&E Strategy 2013-2015
Systems roll-out



In conclusion...



2012

*APR 2012 to be published
by end of next week*

EB discussion June 10th

Thank you!



World Food Programme