

# World Food Programme

*Fighting Hunger Worldwide*

**Government Partnerships Division (PGG)**

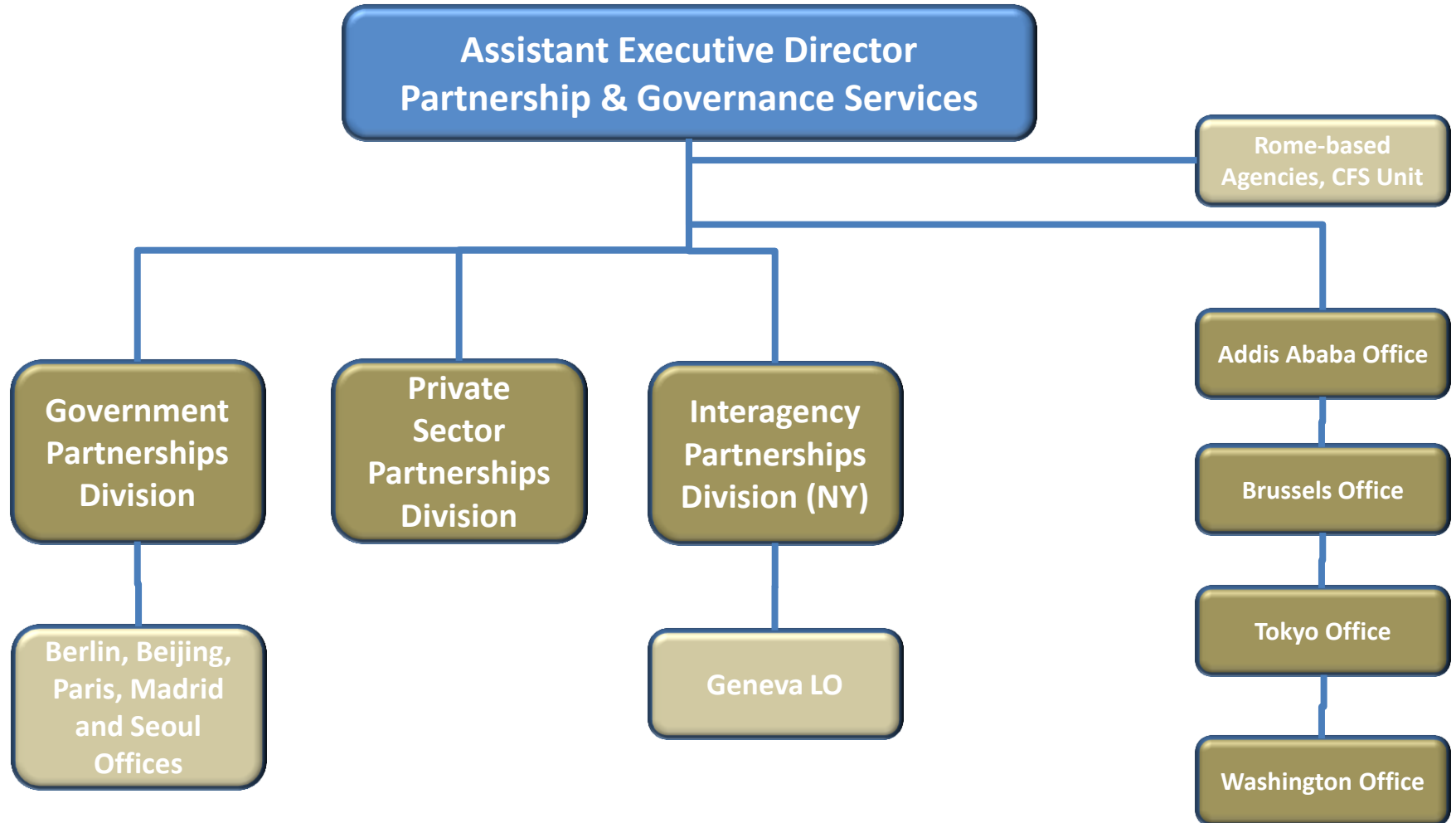
**Induction Briefing for new EB members**  
(data as at 12.01.2014)

**Presented by: William Hart**  
**Deputy Director, PGG**



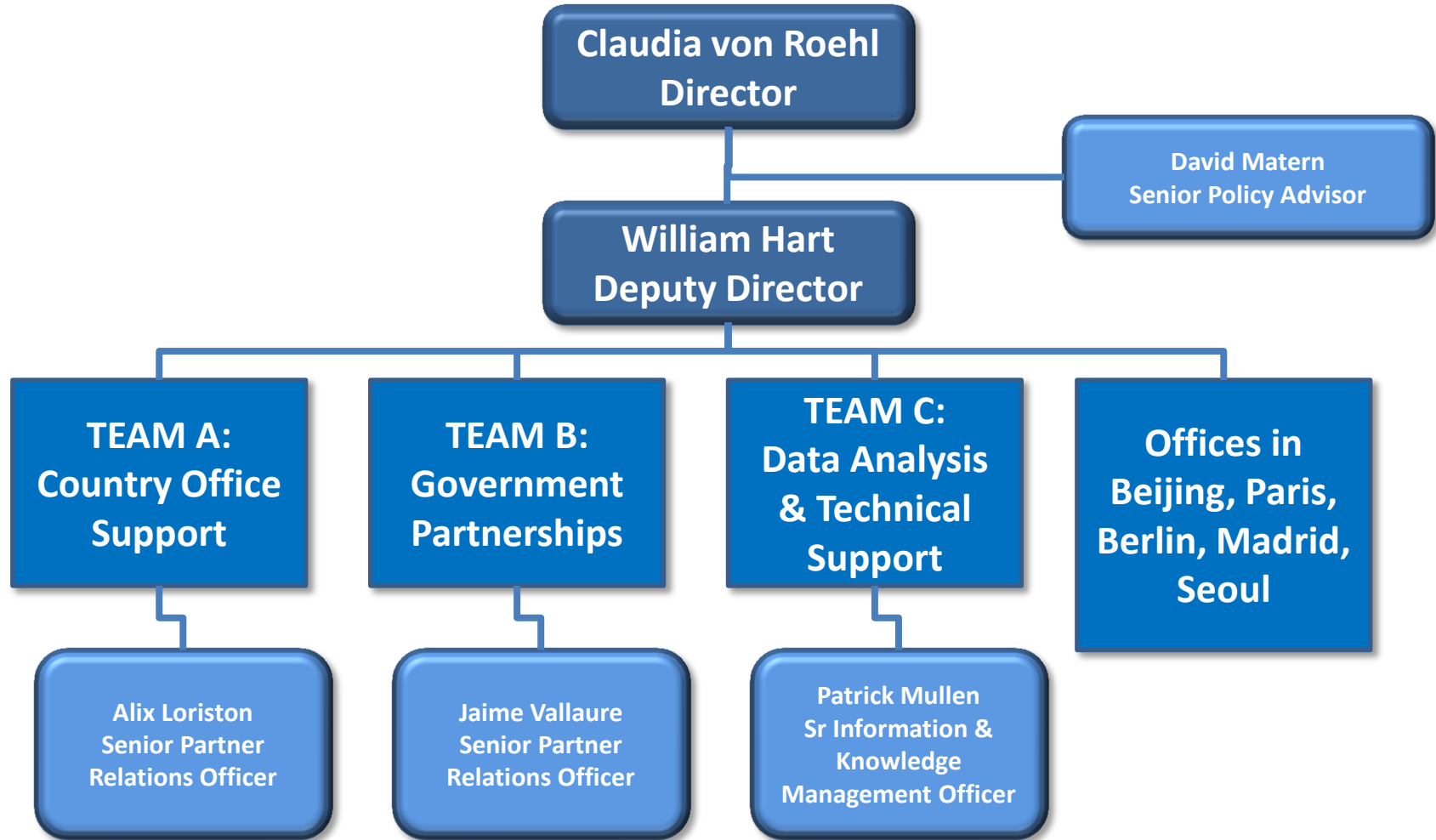
# How we are organized

Partnership & Governance Services Department

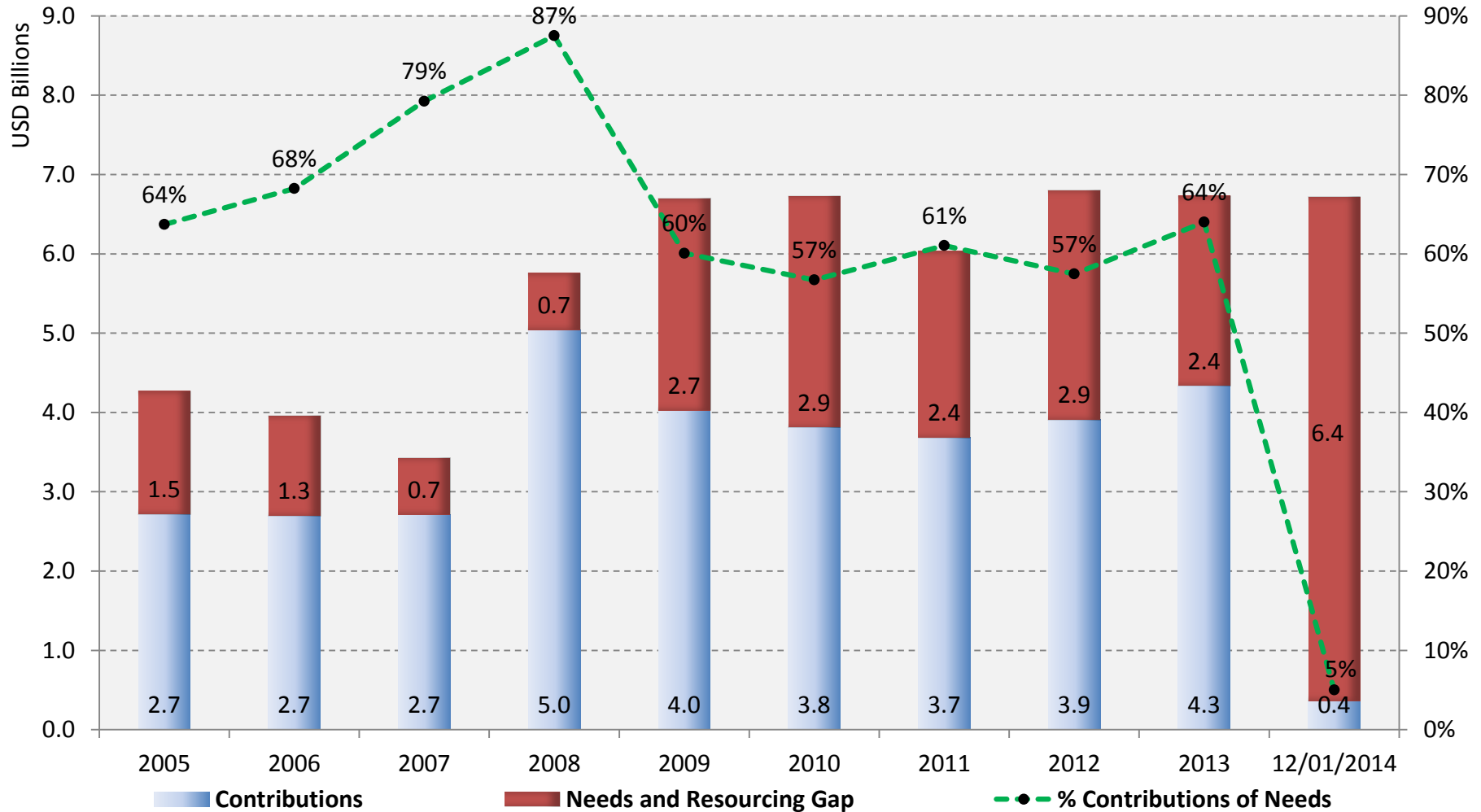


# How we are organized

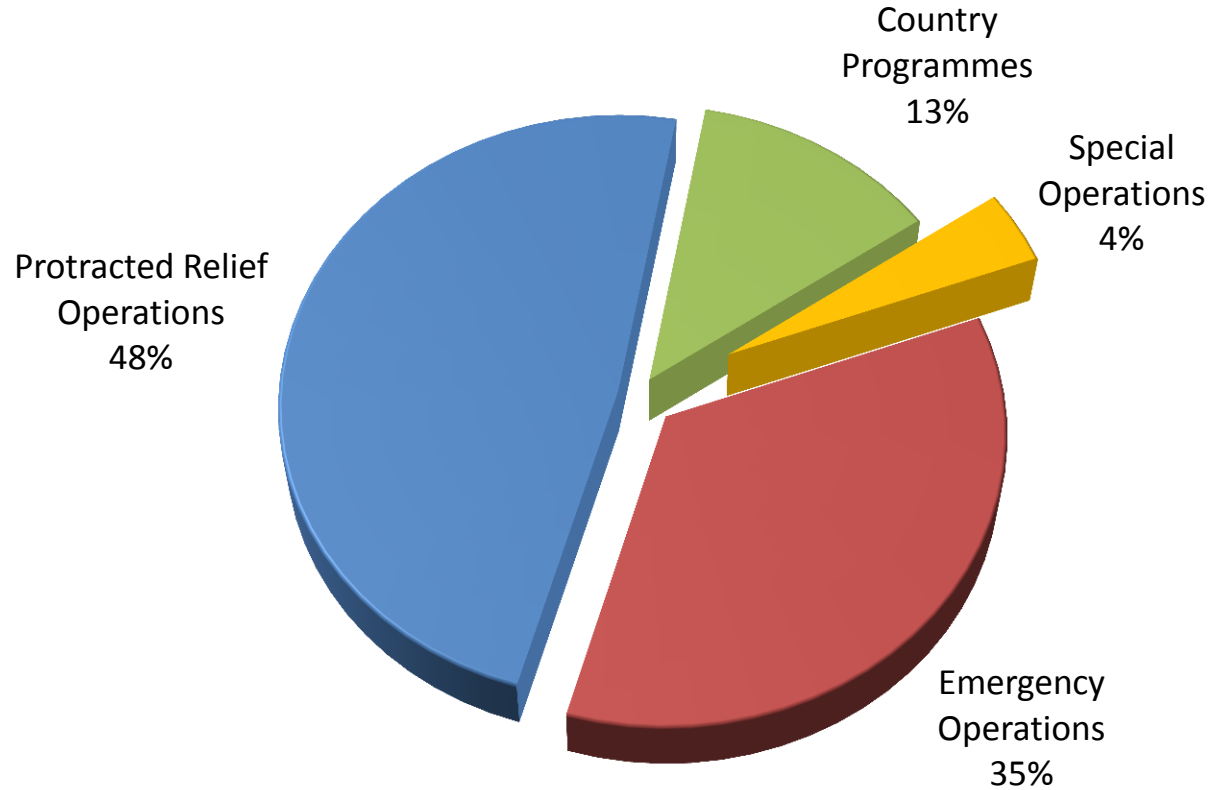
## Structure Government Partnerships Division (PGG)



# WFP is overall 64% funded



# WFP's Gross Requirements in 2014: USD 6.2 billion



# Top 10 Projects in 2014

- *Almost 72% of the total requirements are constituted by the top 10 projects*
- *Syria alone constituted 29% of the total needs*

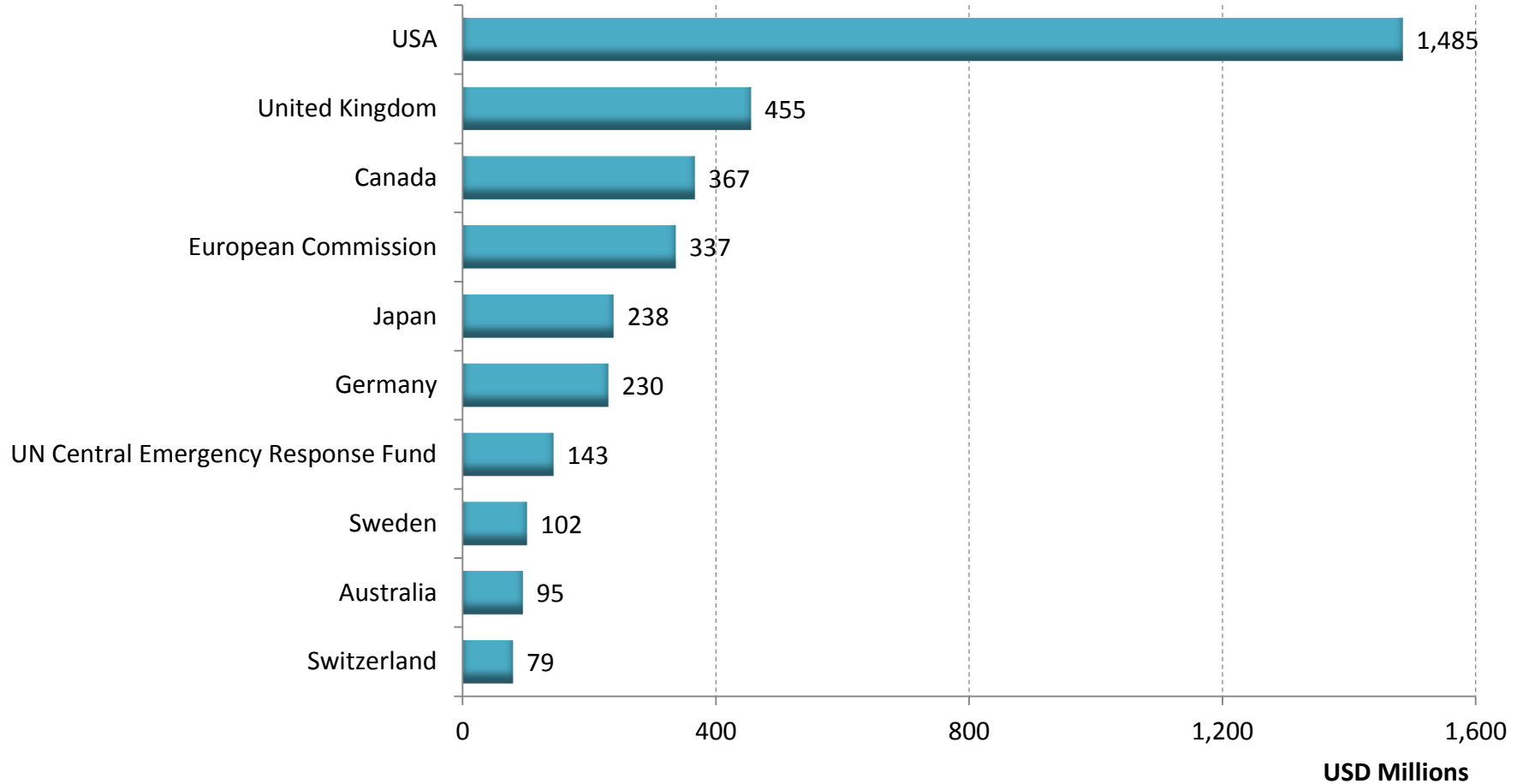
Data in US\$ million)	Needs 2014	Needs 2013	Directed Funds 2014	Directed Funds 2013	Shortfall 2014	% Needs 2014	% Needs 2013
Syria	1,966	1,103	4	802	1,962	100%	27%
Ethiopia	540	653	39	276	501	93%	58%
Sudan	412	428	121	271	290	71%	37%
South Sudan	366	455	131	188	235	64%	59%
Somalia	333	324	3	143	330	99%	56%
Niger	333	221	5	95	328	99%	57%
Mali	274	171	1	133	273	100%	22%
Kenya	244	317	7	198	238	97%	38%
Dem. Rep. Congo	220	296	0	74	220	100%	75%
Chad	183	194	3	117	181	99%	40%
<b>Total:</b>	<b>4,871</b>	<b>4,163</b>	<b>313</b>	<b>2,297</b>	<b>4,558</b>	<b>94%</b>	<b>45%</b>

# Top 10 Resource Partners in 2013

- Over 81% of WFP's funding came from the top 10 resource partners

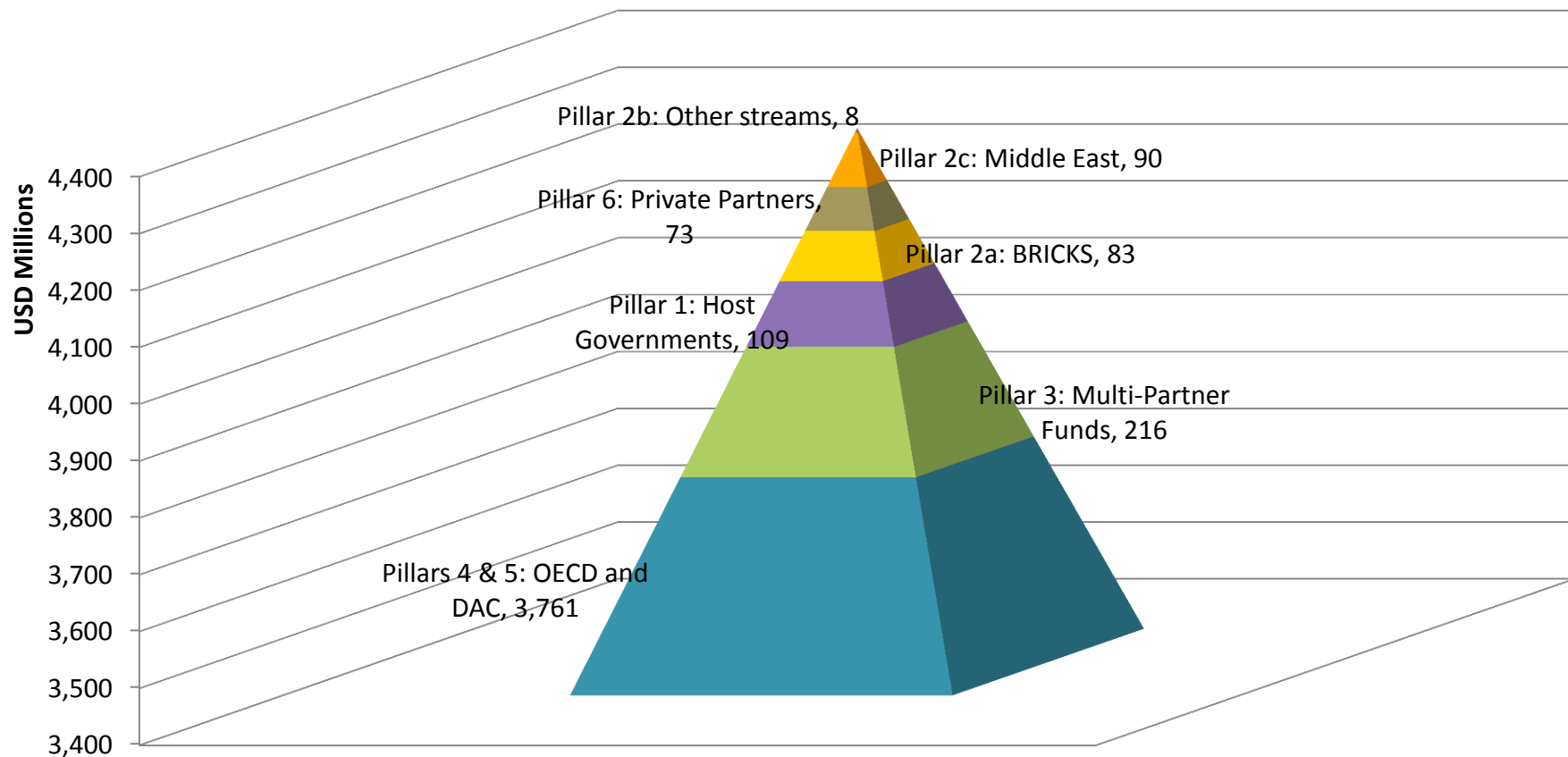


**Total Confirmed Contributions in 2013**



# 2013 Confirmed Contributions by Pillars

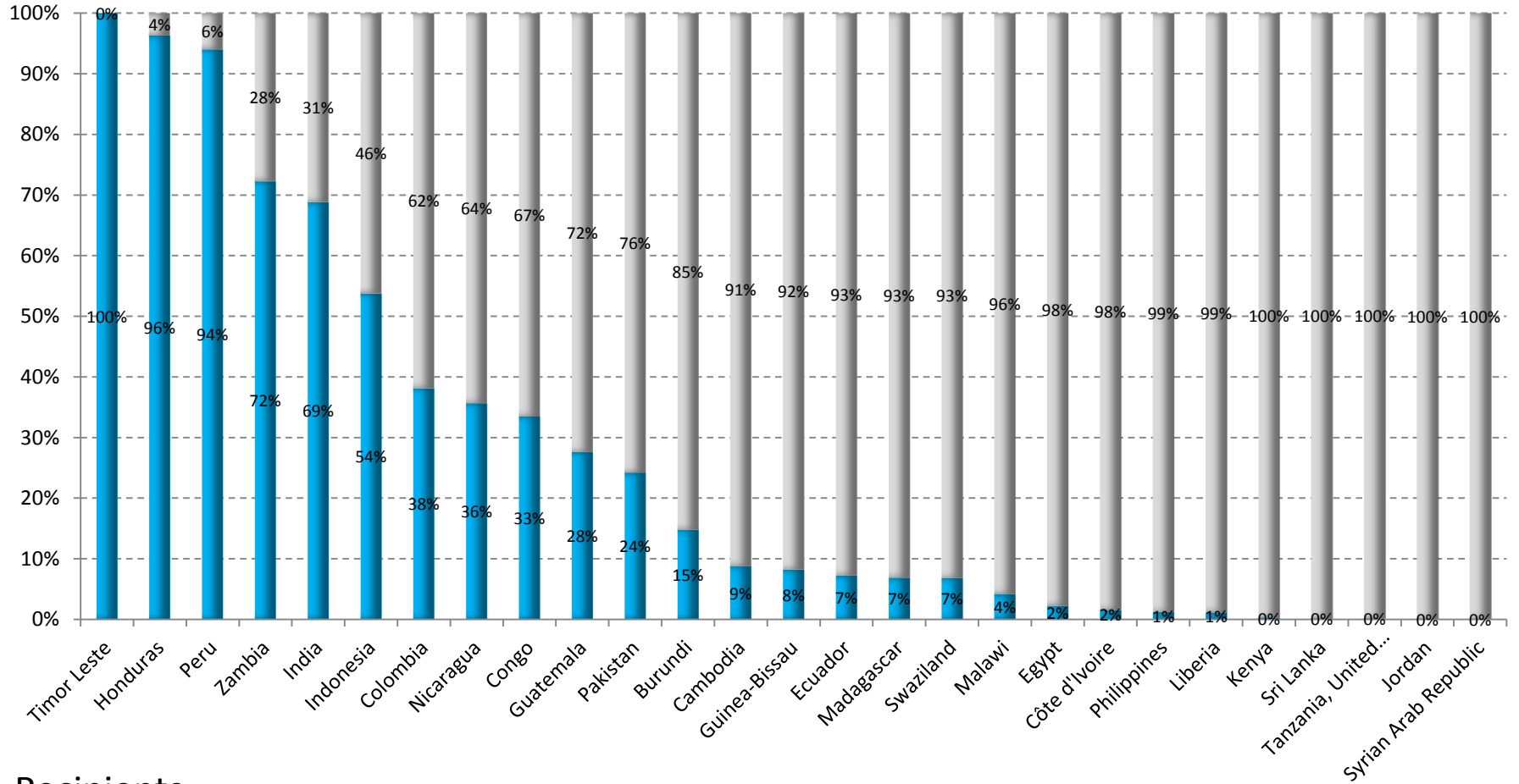
- 87% of WFP's funding is provided by resource partners from Pillars 4 and 5





# 2013 Contributions by the Host Countries

- 8.4% of the funds are contributed by the host countries where WFP is present



## Recipients

■ % Funds by Host Governments

■ % Funds from other Resource partners

- Increase funding predictability: **Strategic Partnership Agreement** – presents the resource partner and WFP to focus on mutual priorities and ensures continued implementation of programmes.
- Smooth out the resource pipeline: **Advance financing** – allows WFP to spend in advance so projects run smoothly and minimize disruptions to projects caused by a non-linear resource supply.
- Front load the food pipeline – **Forward Purchase Facility** – enables WFP to reduce the long lead times of international procurement.
- Broaden resource partner base: unlock potential of up-and-coming economies, **Twinning** has enabled WFP to receive locally grown commodities from host governments and leverage cash from traditional resource partners. Partnership with host governments and emerging economies is increasing through tools like **debt swap for development**.