

A Global Overview of WFP Field Operations

Emergency Preparedness and the Cluster System

Presentation to the
WFP Executive Board

WFP Rome Auditorium | 12 January 2016



**Emergency Preparedness
and Support Response
Division (OSE)**

WFP MAJOR EMERGENCY RESPONSES

USD 8.6 billion

projected operational requirements for 2016



44%
Level 3
Emergency Responses

6%
Level 2
Emergency Responses

Ukraine

USD 70.8m required

0.39m beneficiaries

Syria

USD 1,050m required

5.92m beneficiaries

Iraq

USD 238.0m required

3.02m beneficiaries

Libya

USD 45.8m required

0.18m beneficiaries

Yemen

USD 1,327m required

9.39m beneficiaries

Mali

USD 113.6m required

1.41m beneficiaries

Somalia

USD 283.9m required

1.42m beneficiaries

C.A.R.

USD 157.8m required

1.53m beneficiaries

South Sudan

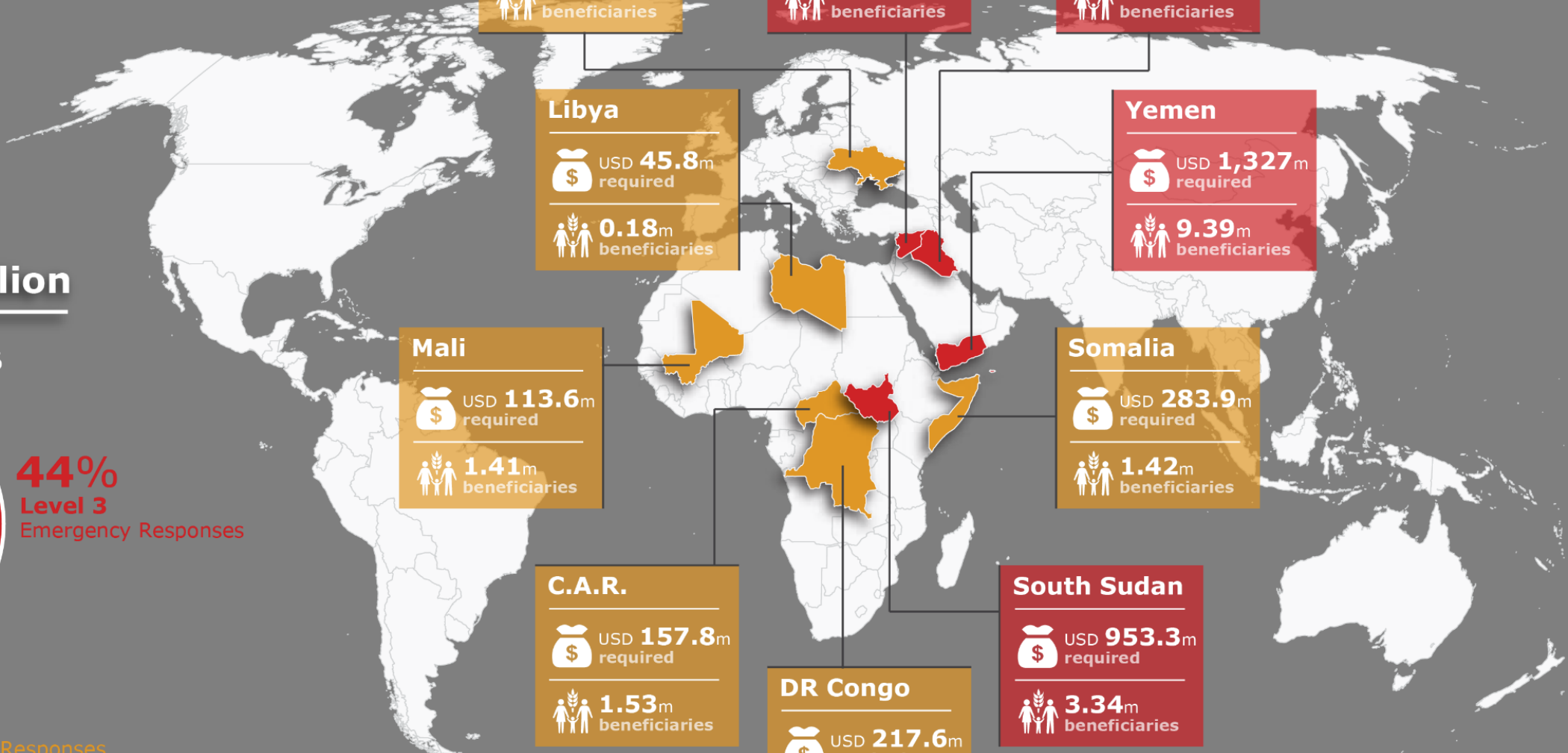
USD 953.3m required

3.34m beneficiaries

DR Congo

USD 217.6m required

2.00m beneficiaries





EMERGENCY PROJECTS

Save lives and protect livelihoods in emergencies



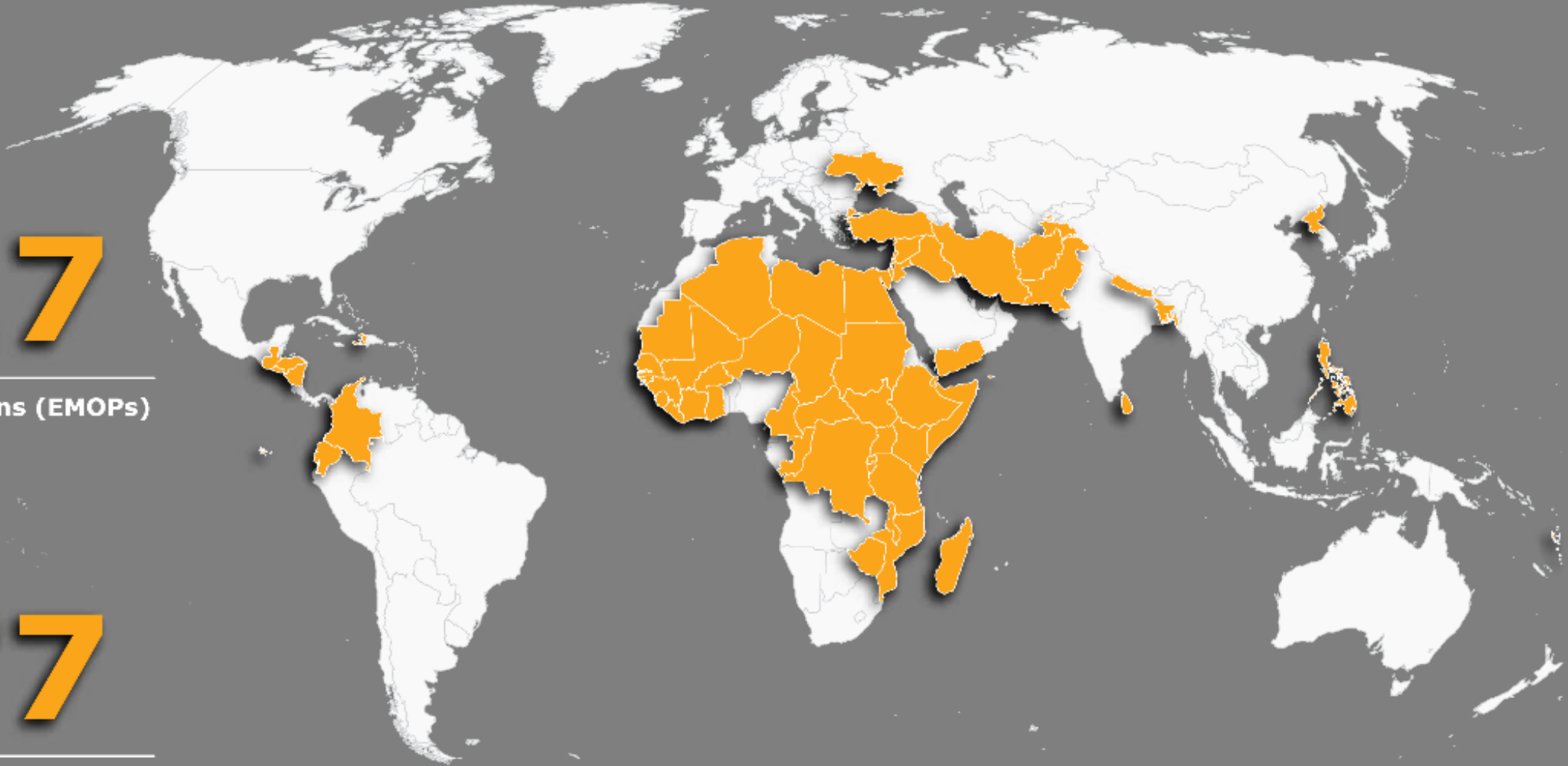
17

Emergency Operations (EMOPs)



77

Protracted Relief & Recovery
Operations (PRROs)

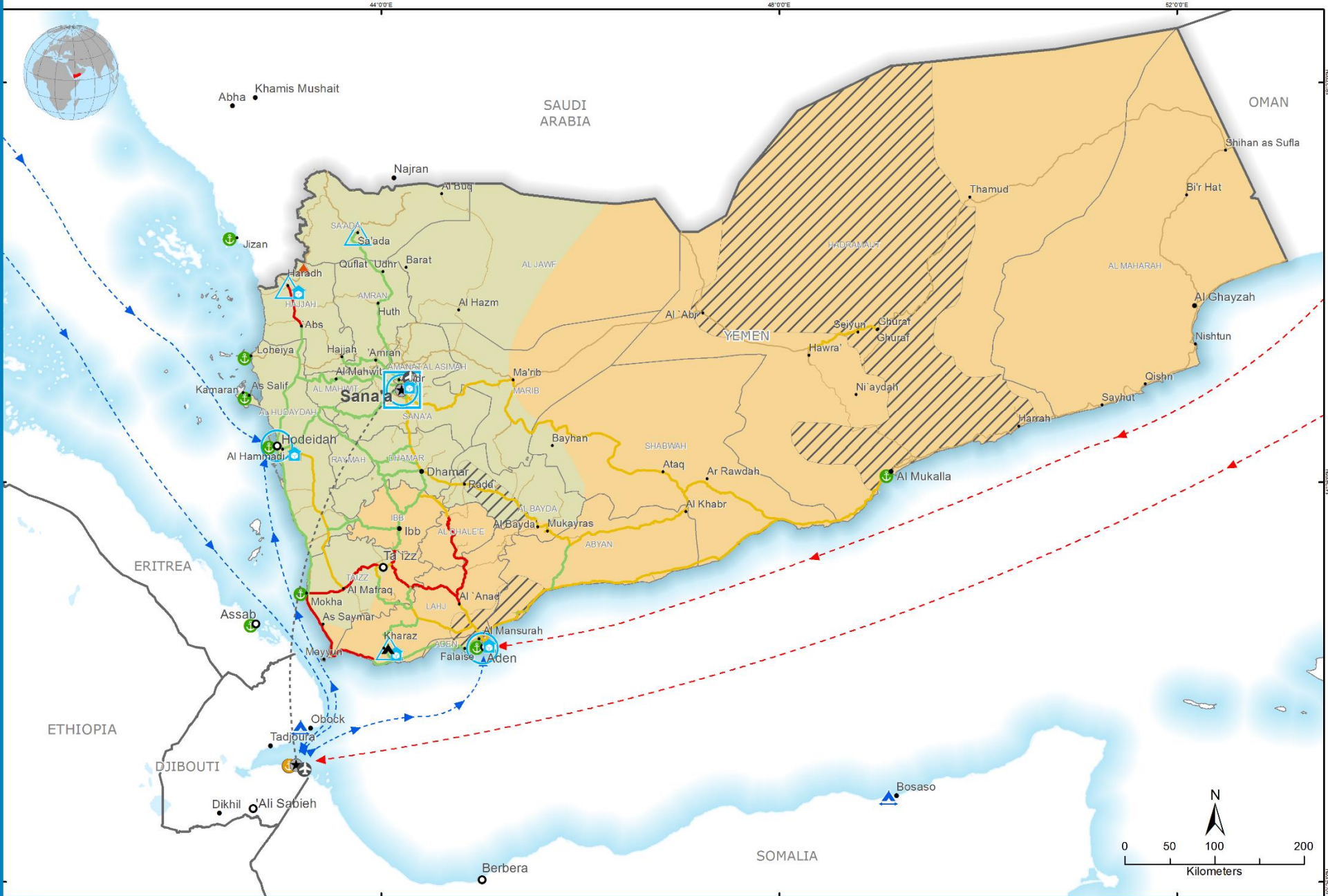


L3

- Yemen
- South Sudan
- Iraq
- Syria and Syrian
Refugee Emergency

Yemen

Operational Overview - January 2016



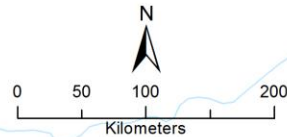
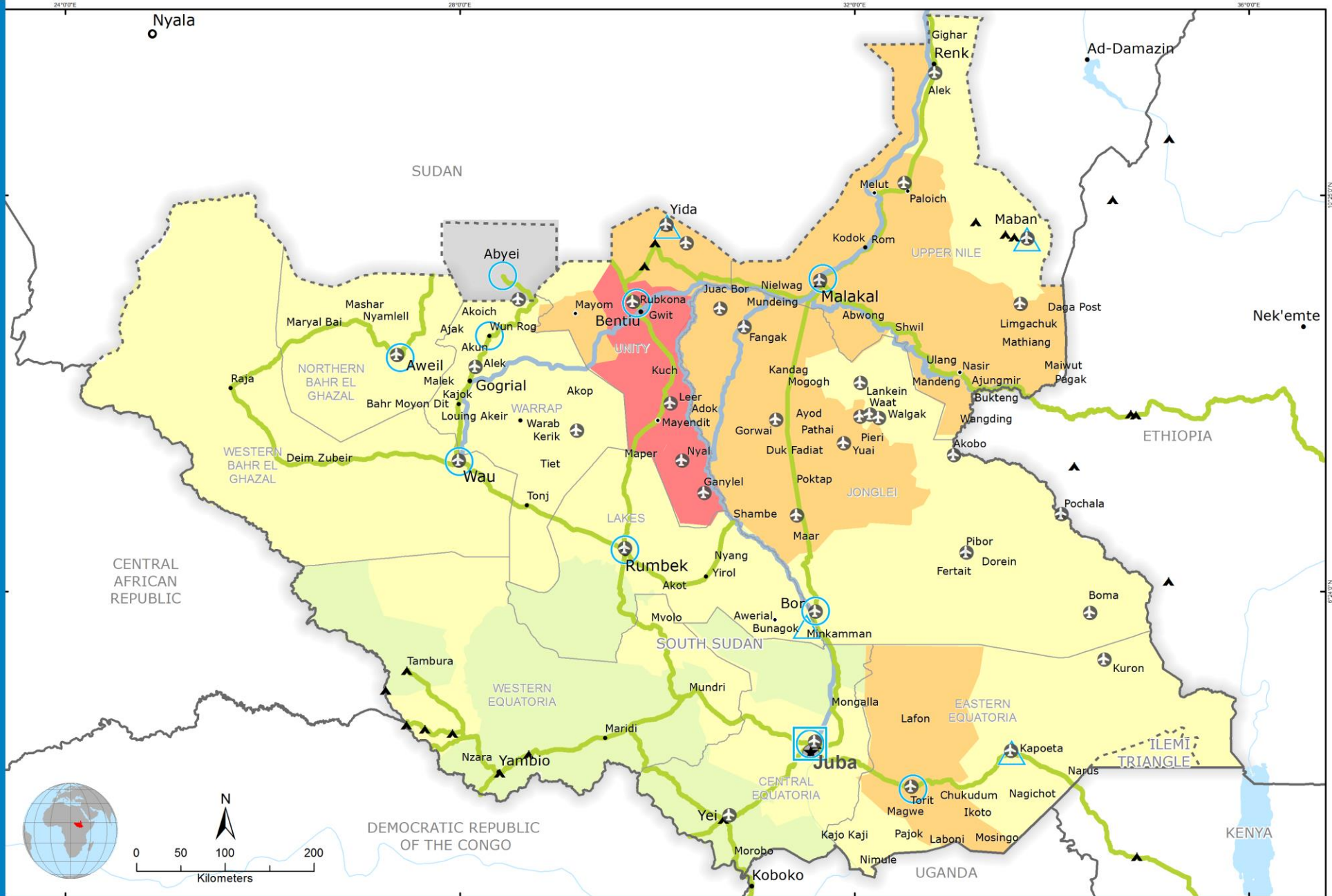
Date Created: 08 January 2016
 Contact: ha.gis@wfp.org
 Website: www.wfp.org
 Prepared by: HQ, OSEP G15
 Map Reference: YEM OperationOverview A3L
 SOURCE: Oxford Analytica, December 2015

- | | | | | | | | | |
|---|----------------|---------------------|-----------------------------|------------------|-------------|----------------|-------------------|------------------------|
| Houthi/Saleh aligned forces | Country Office | Refugee Camp | Port Operational | Warehouse | Road Open | Primary Road | National Capital | International Boundary |
| Saudi-led coalition and anti-Houthi Yemeni | Sub Office | IDP Camp | Port with Restricted Access | UNHAS Connection | Restricted | Secondary Road | Major Town | Governorate Boundary |
| Al-Qaida in the Arabian Peninsula (AQAP) Presence | Field Office | Transit Camp | Supply Road Open | Port | Road Closed | UNHAS Route | Intermediate Town | |
| | | Supply Route Closed | | | | | Small Town | |

Data sources: WFP, UNGIWG, GeoNames, GAUL, GLCSC, OCHA, UNHCR
 The designations employed and the presentation of material in this map(s) do not imply the expression of any opinion on the part of WFP concerning the legal or constitutional status of any country, territory, city or settlement, or concerning the distribution of its frontiers or boundaries.
 © World Food Programme 2015

South Sudan

Operational Overview - January 2016



Date Created: 8 January 2016
 Contact: hq.gis@wfp.org
 Website: www.wfp.org
 Prepared by: HQ, OSEP GIS
 Map Reference: SSD_OperationOverview_A3L

IPC Classification
October - December 2015

No data	Crisis
Minimal	Emergency
Stressed	Famine

Country Office
 Sub Office
 Field Office

Road Supply Route
 Barge Supply Route
 Refugee / IDP Camp

National Capital
 Major Town
 Intermediate Town
 Small Town

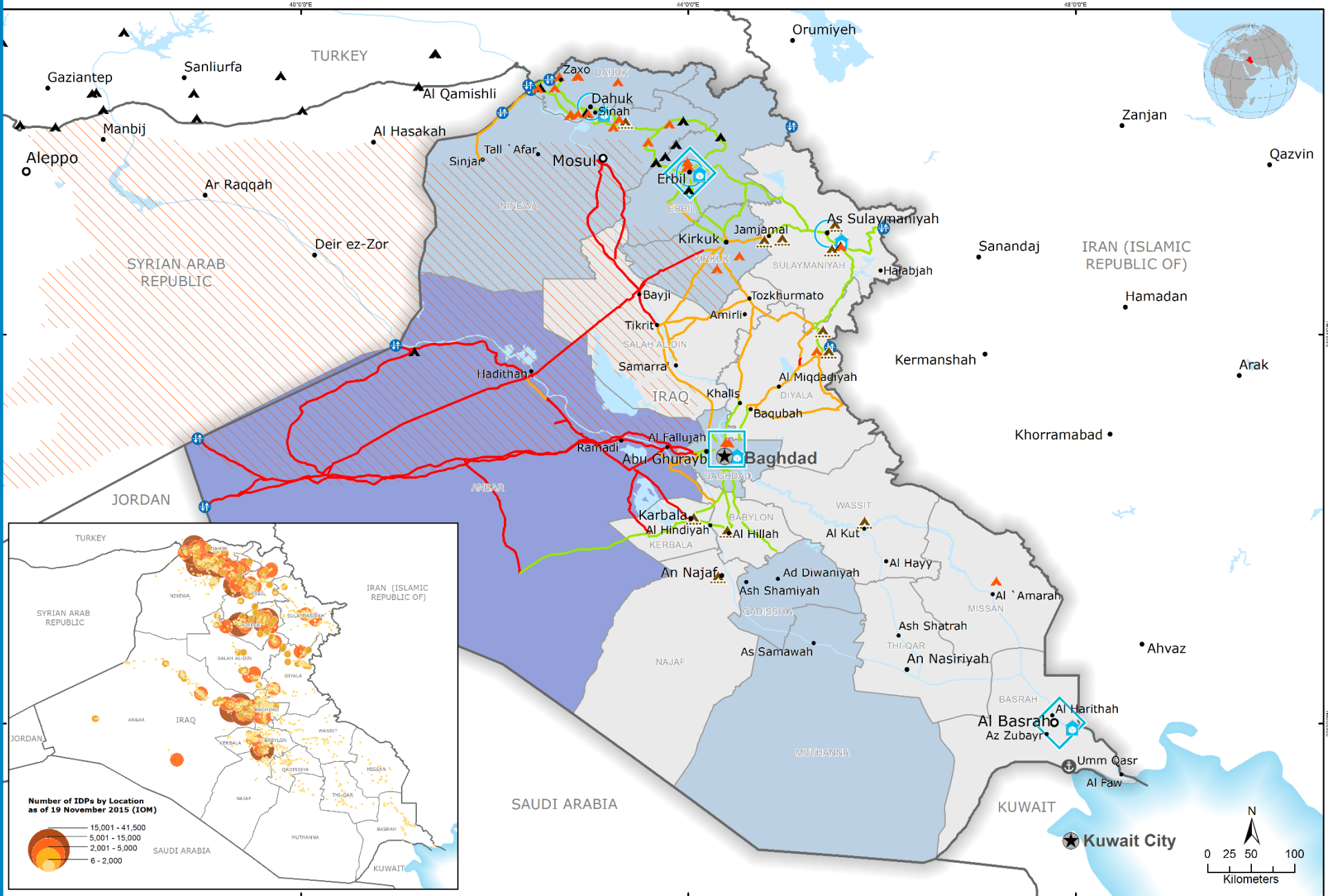
International Boundary
 Undetermined Boundary
 State Boundary

Data sources: WFP, UNGI, GeoNames, GAUL, GLCSC, OCHA, UNHCR

The designations employed and the presentation of material in the map(s) do not imply the expression of any opinion on the part of WFP concerning the legal or constitutional status of any country, territory, city or settlement or concerning the delimitation of its frontiers or boundaries.

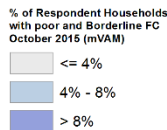
Iraq

Operational Overview and Humanitarian Access - January 2016



Date Created: 08 January 2016
 Contact: irq.gis@wfp.org
 Website: www.wfp.org
 Prepared by: HQ, OSEP GIS

Map Reference:
 IRQ_OperationOverview_A3L



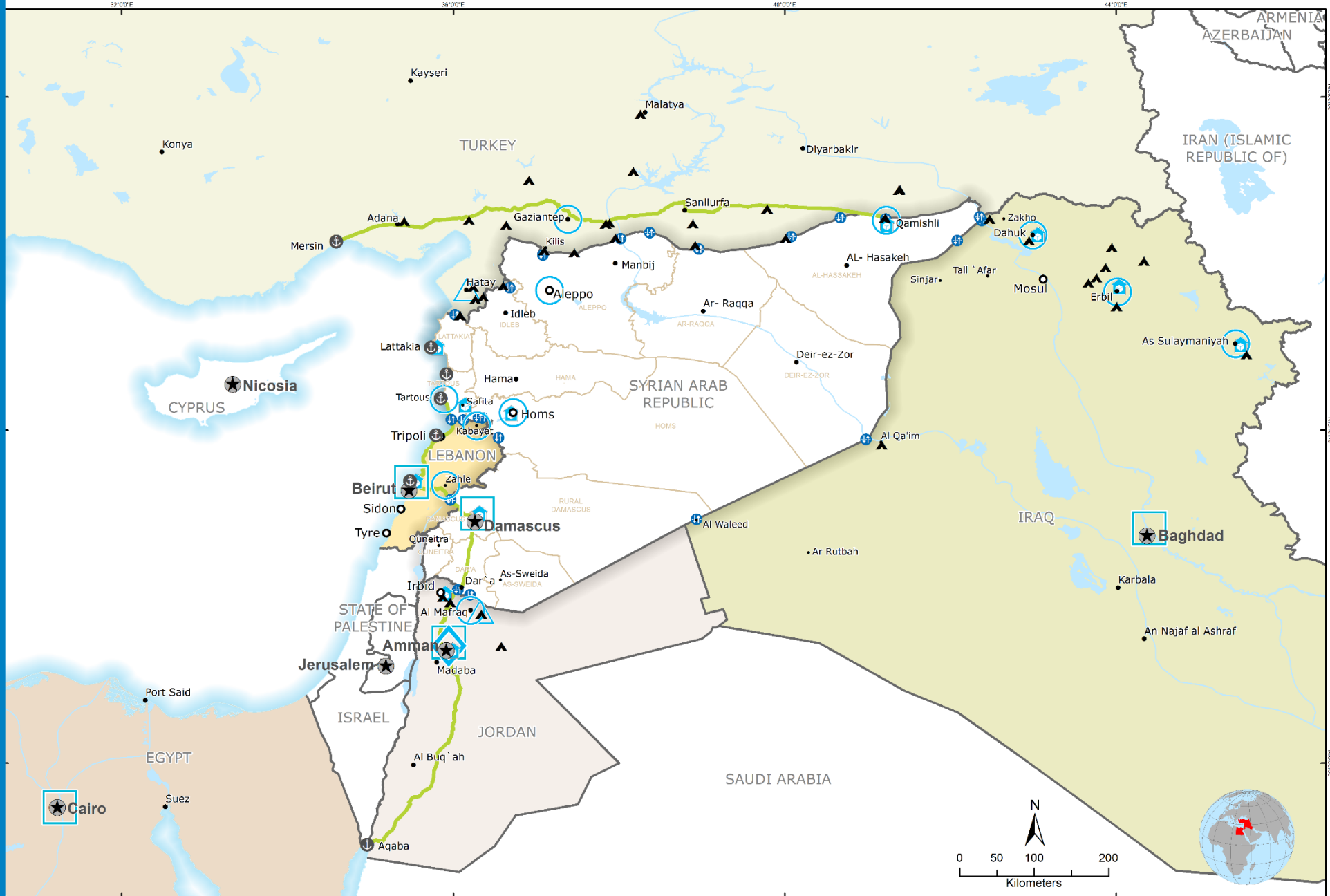
- Country Office
- Area Office
- Sub Office
- Warehouse
- Border Crossing Point
- Restricted Access Area
- Port
- ▲ IDP Camp
- ▲ Refugee Camp
- ▲ IDP Camp Under Development
- Road Supply Route
- Road Supply Route (Limited Access)
- Currently Closed Supply Route
- ★ National Capital
- Major Town
- Intermediate Town
- Small Town
- International Boundary
- Governorate Boundary

Data sources: WFP, UNGI/WG, GeoNames, GAUL, GLCSC, OCHA, UNHCR, IOM

The designations employed and the presentation of material in this map(s) do not imply the expression of any opinion on the part of WFP concerning the legal or constitutional status of any country, territory, city or state, or concerning the delimitation of its frontiers or boundaries.

Syria and Syrian Refugees Crisis

Operational Overview - January 2016



- Country Office
- Sub Office
- Field Office
- Amman Support Office
- Border Crossing Points
- Warehouse
- Road Supply Route
- National Capital
- Major Town
- Intermediate Town
- Small Town
- Refugee Camp
- Port
- International Boundary
- Governorate Boundary

Date Created: 08 January 2016
 Contact: hq.gis@wfp.org
 Website: www.wfp.org
 Prepared by: HQ_OSEP GIS

Map Reference: SYR_REG_OperationOverview_A3L



Data sources: WFP, UNGI/WG, GeoNames, GAUL, GISC, OCHA, UNHCR

The designations employed and the presentation of material in this map(s) do not imply the expression of any opinion on the part of WFP concerning the legal or constitutional status of any country, territory, city or state, or concerning the delimitation of its frontiers or boundaries.

© World Food Programme 2015

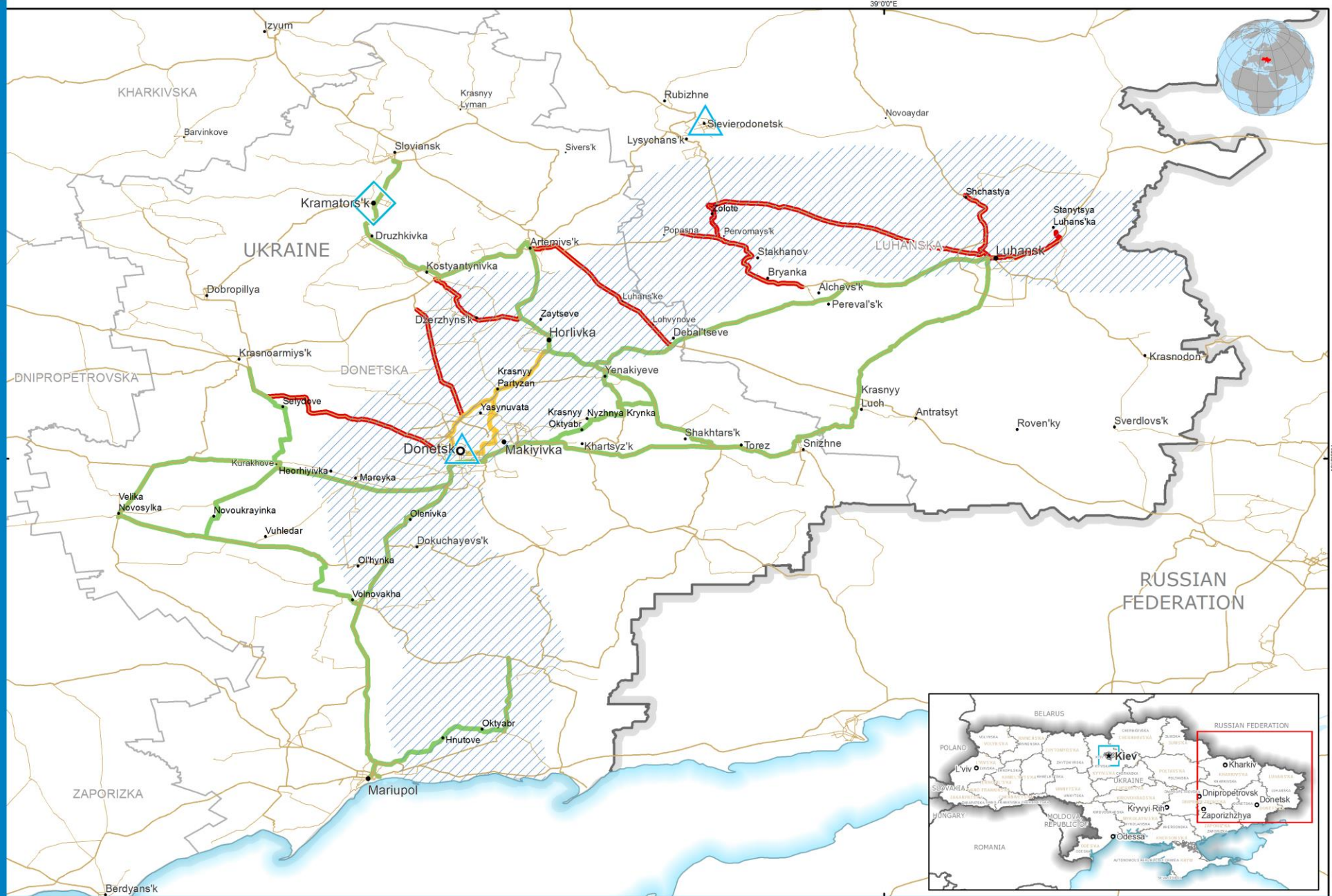
L2 Emergencies

L2

- Ukraine
- C.A.R.
- DRC
- Mali
- Somalia
- Libya

Ukraine

Operational Overview - January 2016



- | | | | | |
|----------------|-------------------|-----------------------------|--------------------|------------------------|
| Country Office | National Capital | Primary Road | Road status | International Boundary |
| Area Office | Major Town | Secondary Road | Open | Oblast Boundary |
| Field Office | Intermediate Town | Area along the contact line | Restricted | Raion Boundary |
| | Small Town | | Closed | Surface Waterbody |
| | Village | | | |

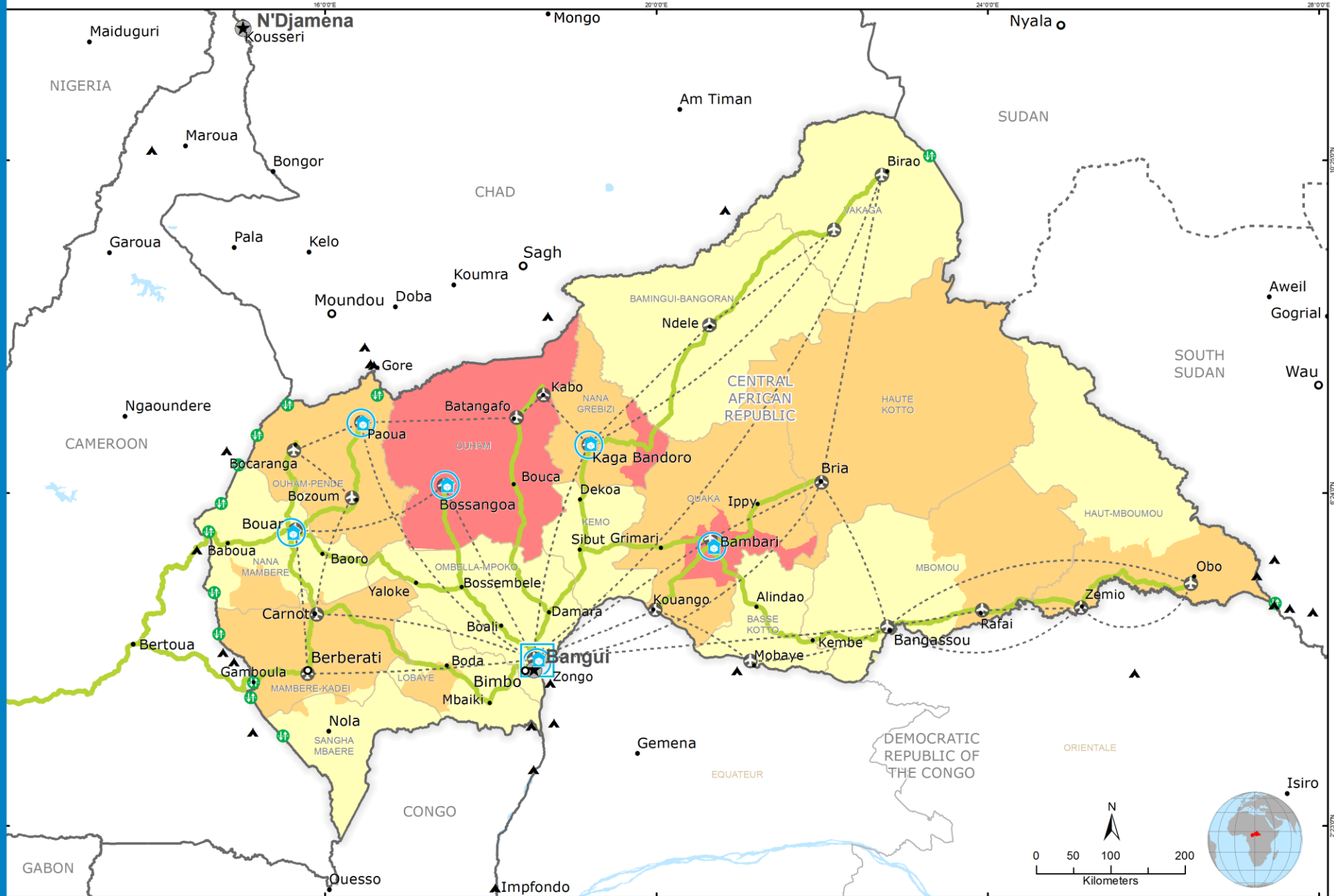
Date Created: 08 January 2016
 Contact: hq.gis@wfp.org
 Website: www.wfp.org
 Prepared by: HQ, OSEP GIS
 Map Reference: UKR_OperationOverview_A3L



Data sources: WFP, UNGIWG, GeoNames, GAUL, OCHA
 The designations employed and the presentation of material in the map(s) do not imply the expression of any opinion on the part of WFP concerning the legal or constitutional status of any country, territory, city or area, or concerning the delimitation of its frontiers or boundaries.
 © World Food Programme 2015

Central African Republic

Operational Overview - January 2016



Date Created: 08 January 2016
 Contact: hq.gis@wfp.org
 Website: www.wfp.org
 Prepared by: HQ, OSEP GIS
 Map Reference: CAF_OperationOverview_A3L

Acute Food Insecurity Phase
 April - November 2015

- No data
- Minimal
- Stressed
- Crisis
- Emergency
- Famine

- Country Office
- Sub Office
- Field Office

- Warehouse
- Food Distribution Point
- Refugee / IDP Camp
- Border Crossing Point

- UNHAS Connection
- UNHAS Route
- Road Supply Route

- National Capital
- Major Town
- Intermediate Town
- Small Town

- International Boundary
- Undetermined Boundary
- Prefecture Boundary

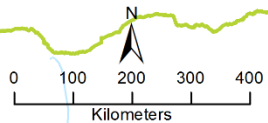
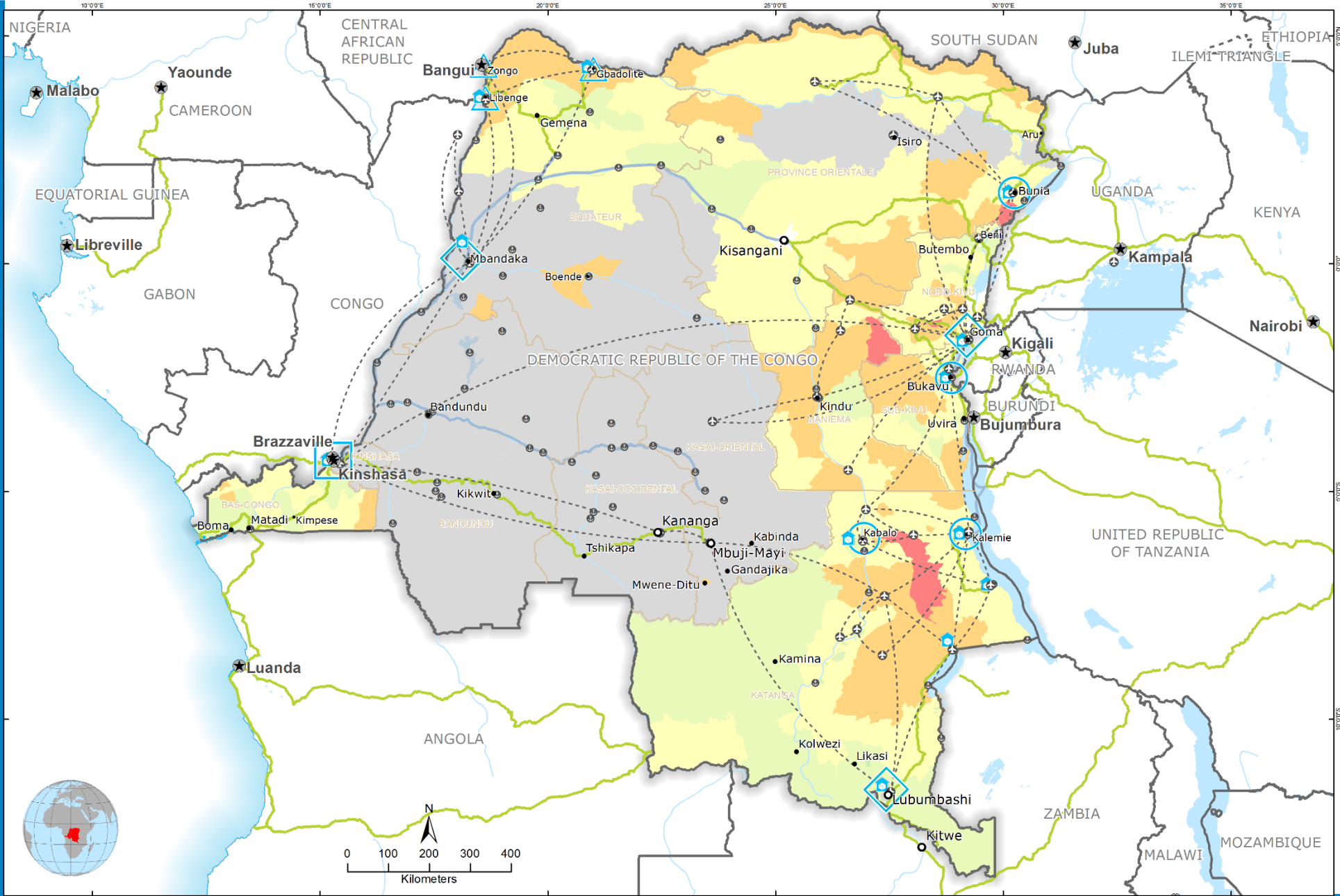
Data sources: WFP, UNGI, GeoNames, GAUL, GLCSC, SIGCAF, UNHCR, IPC

The designations employed and the presentation of material in the map(s) do not imply the expression of any opinion on the part of WFP concerning the legal or constitutional status of any country, territory, city or area, or concerning the delimitation of its frontiers or boundaries.

© World Food Programme 2015

Democratic Republic of the Congo

Operational Overview - January 2016



Date Created: 08 January 2016
 Contact: hq.gis@wfp.org
 Website: www.wfp.org
 Prepared by: HQ, OSEP GIS
 Map Reference:
 COD_OperationOverview_A3L



Acute Food Insecurity Phase September 2015

- No data
- Minimal
- Stressed
- Crisis
- Emergency
- Famine

- Country Office
- Area Office

- Sub Office
- Field Office

- National Capital
- Major Town
- Intermediate Town
- Small town

- Warehouse
- Port
- UNHAS Route

- Road Supply Route
- Waterway Supply Route
- International Boundary
- Undetermined Boundary
- Province boundary

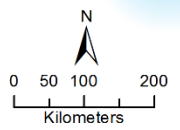
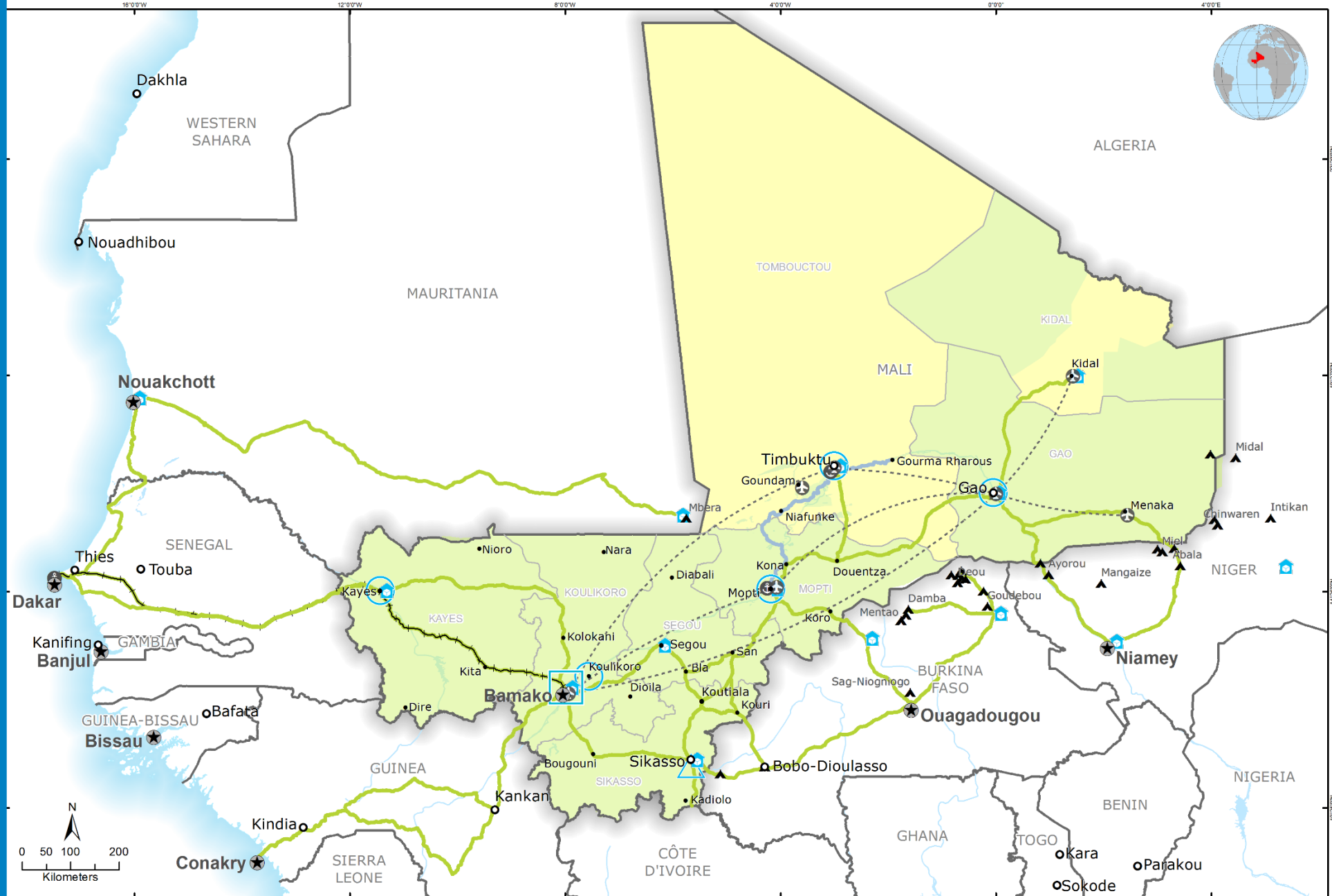
Data sources: WFP, UNZIGW, GeoNames, GAUL, GLCSD, UNHCR, RCG, IPC

The designations employed and the presentation of material in this map(s) do not imply the expression of any opinion on the part of WFP concerning the legal or constitutional status of any country, territory, city or area, or concerning the delimitation of its frontiers or boundaries.

© World Food Programme 2015

Mali

Operational Overview - January 2016



Date Created: 08 January 2016
 Contact: hq.gis@wfp.org
 Website: www.wfp.org
 Prepared by: HQ, OSEP, GIS
 Map Reference: MLI_OperationOverview_A3L

- | | | | | | |
|---|----------------|----------------------|-----------------------|-------------------|------------------------|
| Acute Food Insecurity Phase
October - December 2015 | Country Office | Warehouse | UNHAS Route | National Capital | International Boundary |
| No data | Sub Office | Port | Road Supply Route | Major Town | Undetermined Boundary |
| Minimal | Field Office | UNHAS Connection | Railway Supply Route | Intermediate Town | Region Boundary |
| Stressed | | Refugee / Settlement | Waterway Supply Route | Small Town | |
| Crisis | | | | | |
| Emergency | | | | | |
| Famine | | | | | |

Data sources: WFP, UNGIWI, GeoNames, GAUL, GLCSC, IGM, UNHCR
 The designations employed and the presentation of material in this map(s) do not imply the expression of any opinion on the part of WFP concerning the legal or constitutional status of any country, territory, city or settlement, or concerning the delimitation of its frontiers or boundaries.
 © World Food Programme 2015





Acute Food Insecurity Phase August - December 2015

- No data
- Crisis
- Minimal
- Emergency
- Stressed
- Famine

- Country Office
- Area Office
- Liaison Office

- Sub Office
- Field Office
- Presence Office

- 🏠 Warehouse
- 🏠 UNHAS Connection
- 🏠 National Capital
- 🏠 Major Town
- 🏠 Intermediate Town
- 🏠 Small Town
- 🏠 Village

- 📍 Refugee / IDP Camp
- 📍 UNHAS Route
- 📍 Port
- 📍 Road Supply Route

- International Boundary
- Undetermined Boundary
- First level admin Boundary

Data sources: WFP, UNICEF, GeoNames, GAUL, GLSCS, OCHA, UNHCR, IPC

The designers employed and the presentation of material in this map(s) do not imply the expression of any opinion on the part of WFP concerning the legal or constitutional status of any country, territory, city or area, or concerning the delimitation of its frontiers or boundaries.

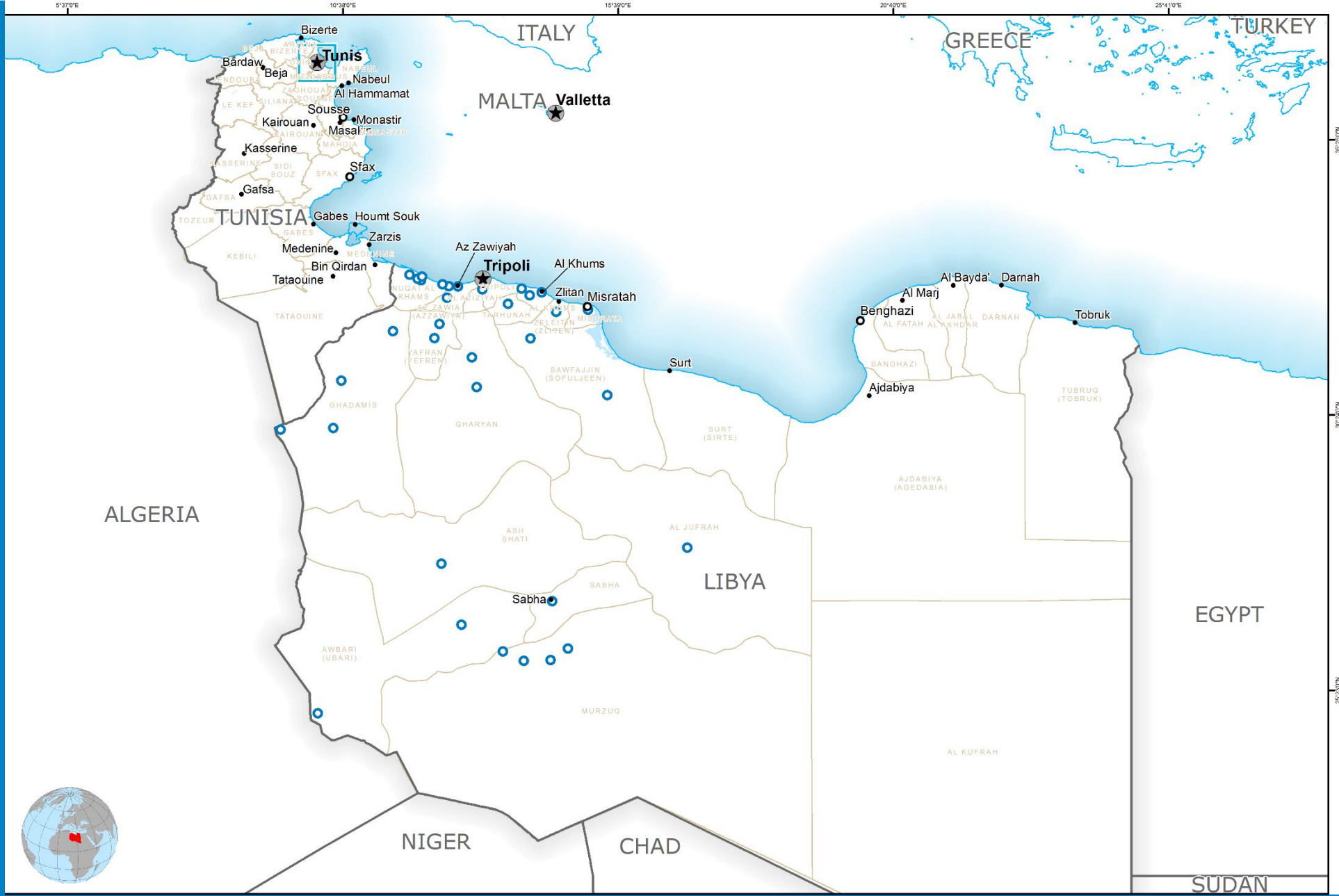
© World Food Programme 2015



Date Created: 08 January 2016
 Contact: hq.gis@wfp.org
 Website: www.wfp.org
 Prepared by: HQ, OSEP GIS
 Map Reference:
 SOM OperationOverview A3L

Libya

Operational Overview - January 2016



Date Created: 08 January 2016
 Contact: hq.gis@wfp.org
 Website: www.wfp.org
 Prepared by: HQ, OSEP GIS
 Map Reference:
 LBY OperationOverview_A3L

- Country Office
- Planned Food Distribution Point (October 2015)
- National Capital
- Major Town
- Intermediate Town
- Small Town
- International boundary
- Region boundary
- River
- Surface Waterbody

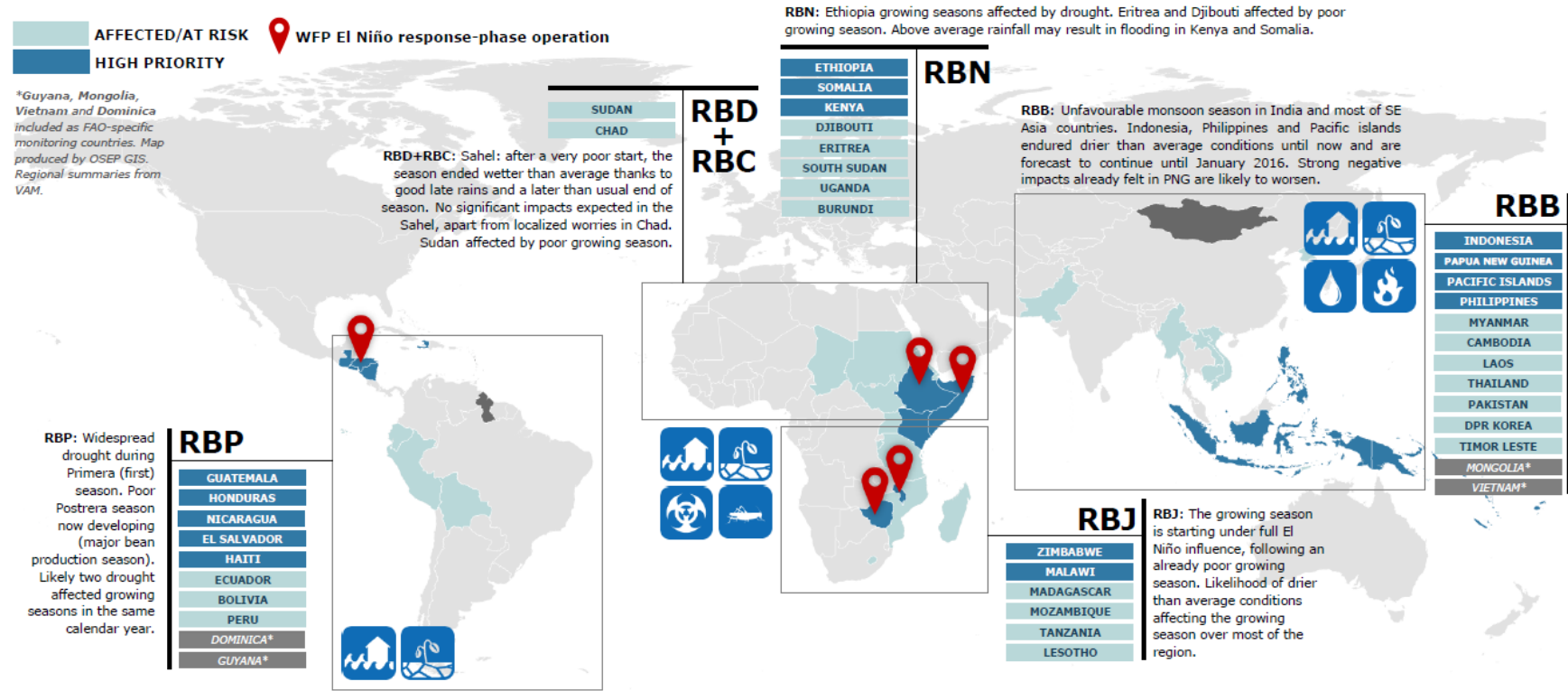
Data sources: WFP, UNGIWG, GeoNames, GAUL, GLSCS
 The designations employed and the presentation of material in the map(s) do not imply the expression of any opinion on the part of WFP concerning the legal or constitutional status of any country, territory, city or area, or concerning the delimitation of its frontiers or boundaries.
 © World Food Programme 2015



El Niño Preparedness and Response

WFP-FAO El Niño Monitoring Countries:

The below countries are of particular concern for both WFP and FAO due to their climatic conditions (both ongoing and potential) due to El Niño.



WFP El Niño Response-phase Operations:

