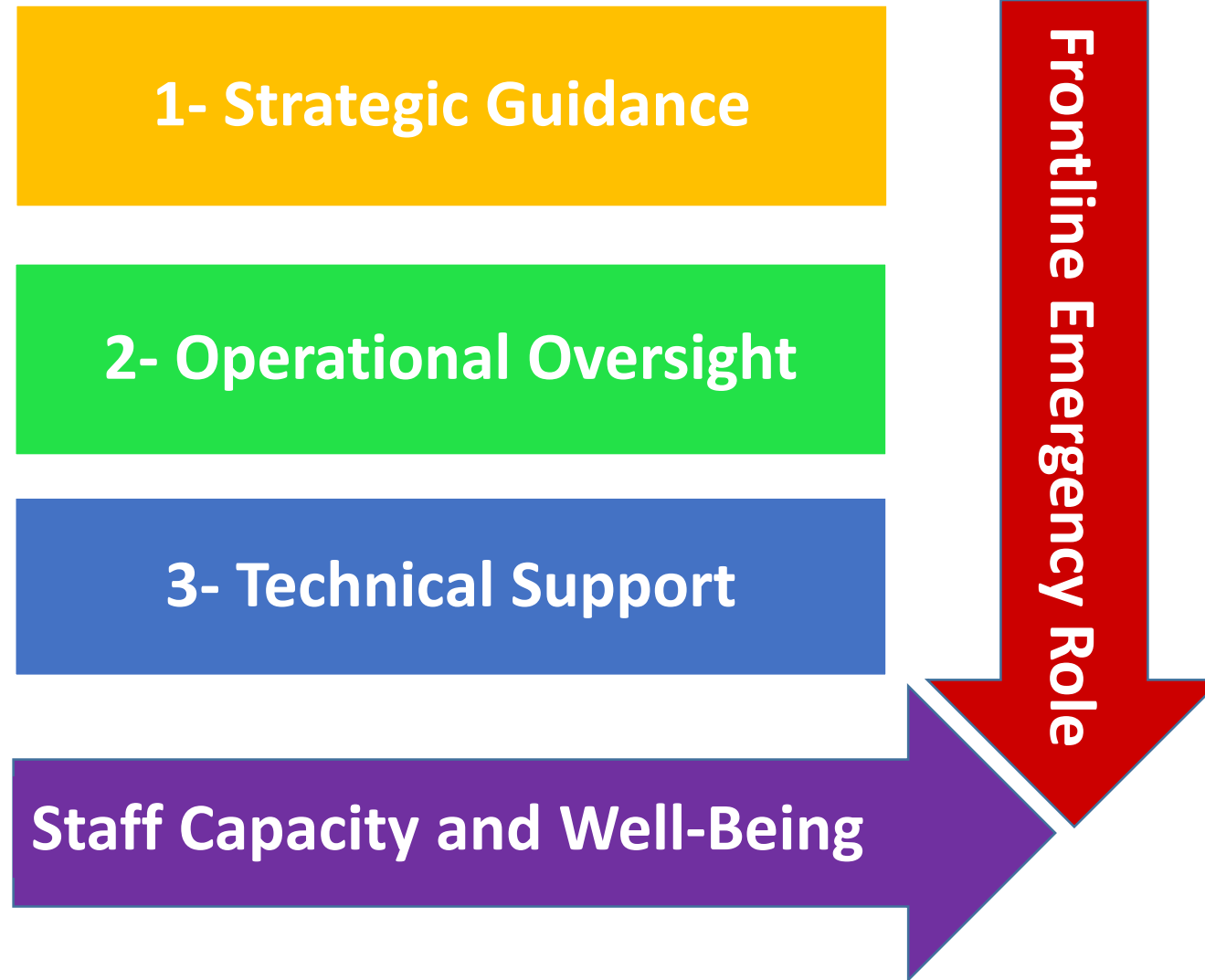


Regional Overview West and Central Africa June 2016



Regional Bureau Learning Journey

Fit for Purpose structures the role of the Regional Bureau in decentralization around 3 core pillars. The 2015 RBD Capacity Review validates the 3 Pillars, and expands.



Building evidence-based programmes

NIGERIA

We, the

Assessors /
Responders

- Government
- UN
- NGOs
- Communities

Are using

Tools

- mVAM
- Post-Distribution Monitoring
- Malnutrition screening
- Assessments
- Market monitoring
- Informant Networks
- Satellite Imagery
- Feedback mechanisms

To capture....

Voices

- IDPs
- Host communities
- Transporters
- Traders

Anthropological studies under the Regional Markets Project help us *Look Behind the Fence* and understand programmatic impacts not captured by traditional monitoring.



Case Study : Caregiver programme, Mali

Food assistance is essential for caregiver (usually mother/mother-in-law) to bring child to treatment in time. During this displacement, the caregiver's household obligations are filled by gendered labor (e.g. girls who must dropout of school).

Even short periods of displacement can

=

Permanent opportunity costs for households

Building new programme models

CURRENT MODEL : WE DELIVER



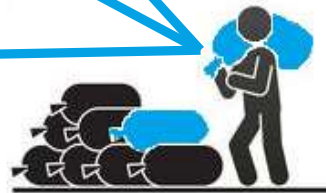
Smallholder farmers



Schools



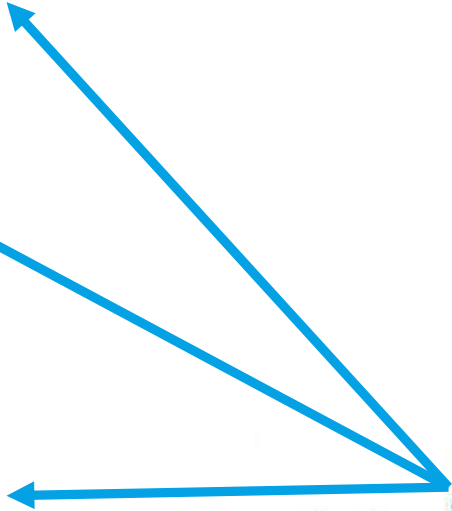
Vulnerable Households



WFP

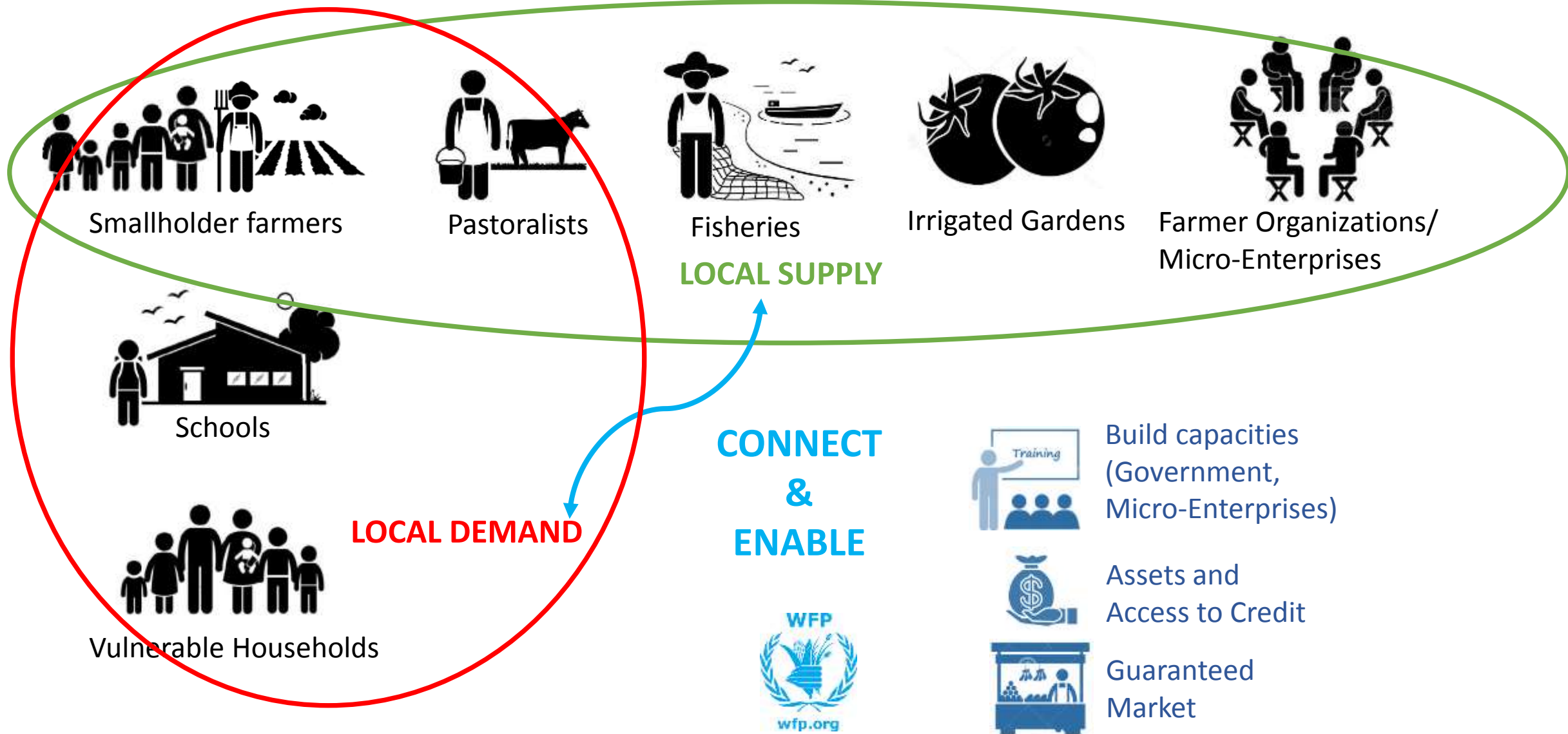


wfp.org



Building new programme models

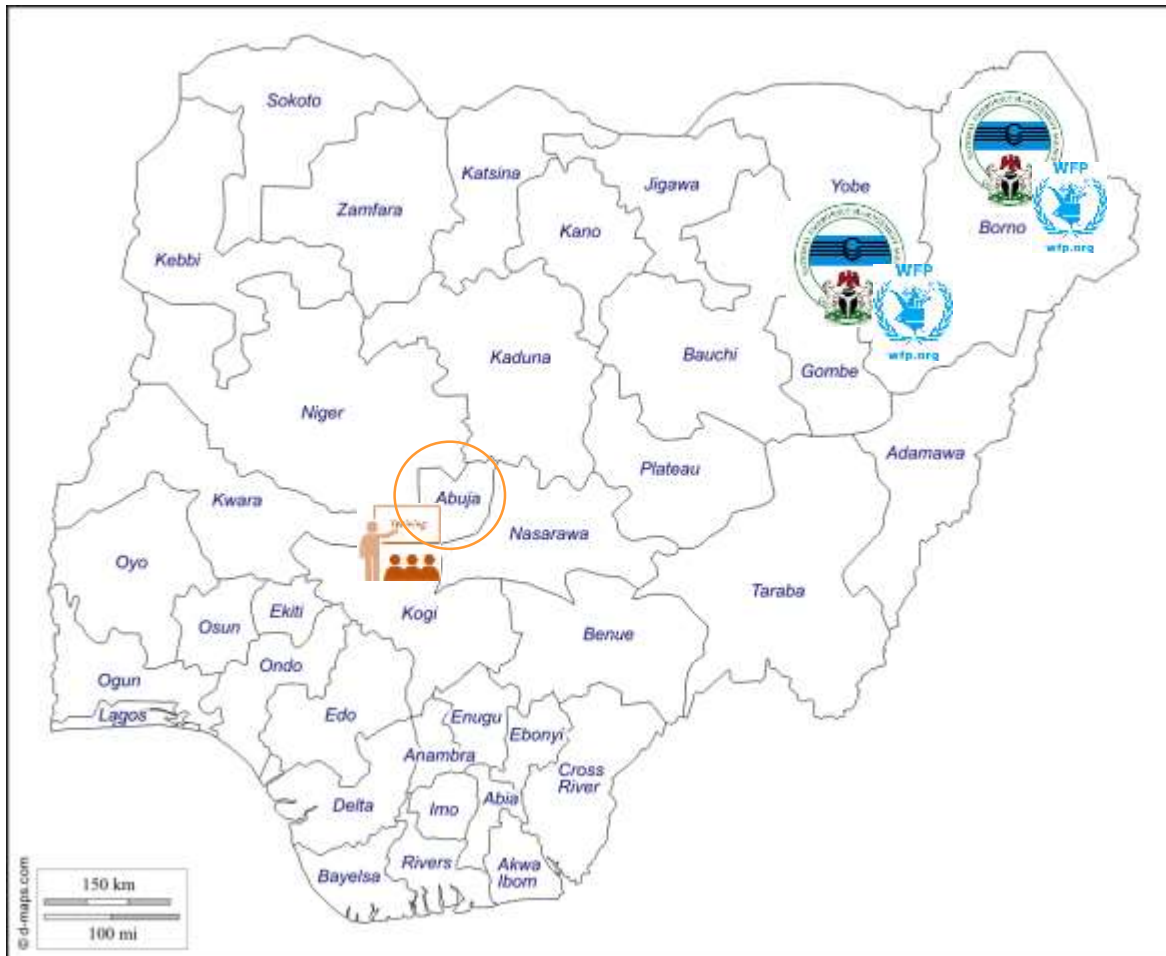
TOWARDS A NEW MODEL : WE CONNECT AND ENABLE



Shifting from “We Deliver” to “We Enable”

One year ago, our engagement in Nigeria was largely through classroom trainings and technical support missions at the capital level.

Since end 2015, WFP is on the ground in Northeast Nigeria working hand in hand with the local government and Emergency Management Agencies, to expand coverage of emergency response while building operational know-how.



SEMA staff screen for acute malnutrition, Maiduguri (Borno)

Maintaining the ability to respond – in collaboration with RBAs



Seeds-4-Change
Central African Republic

Together, WFP and FAO deliver food, seeds, and tools to enable families to prepare for the planting season.

Looking behind the fence ... at ourselves



It is not for you...Security has also been bad... I think it would be better for a woman



security officer to make sure we respect all the security rules.



Hmmm...Let's see. I just don't think your going to Loua is a good idea.

Supervisor walks away and crosses paths with a male staff.



Chief, any changes to our mission plan for Loua?

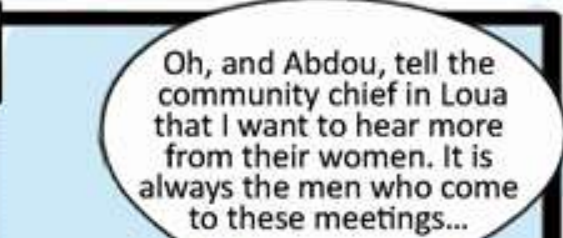
No, we are all set.... You know, Mariam is interested in joining. But I just don't think that it is a good idea.



Really? I think that if she goes, we will be getting complaints...You know how women are...

That's right...But maybe we can look into it, and improve something down there. The sanitation

He walks away and then turns back half way.



Oh, and Abdou, tell the community chief in Loua that I want to hear more from their women. It is always the men who come to these meetings...

Merci – Thank You

