

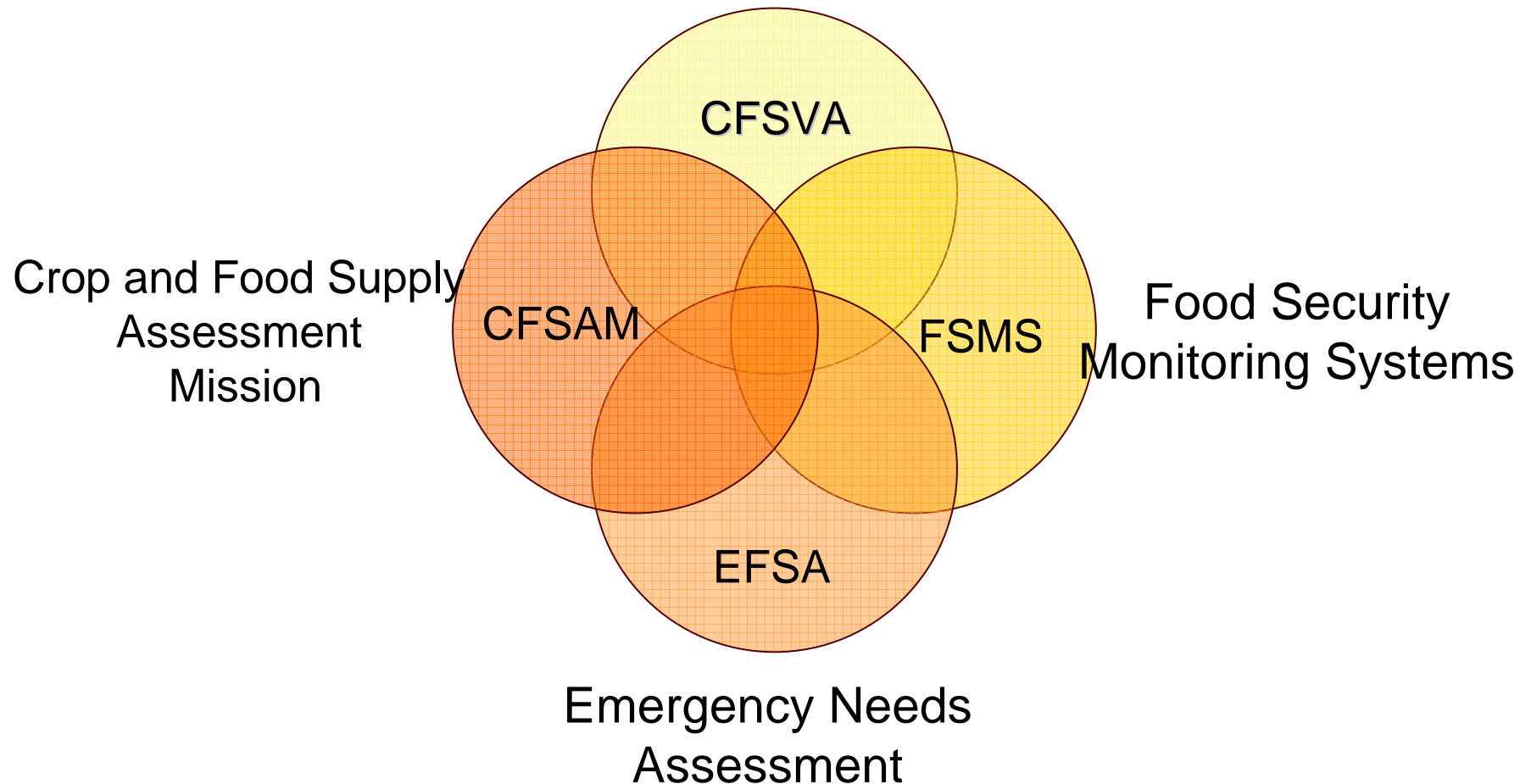
Food Security Analysis

EB Informal Consultation
Rome, 16 January 2009

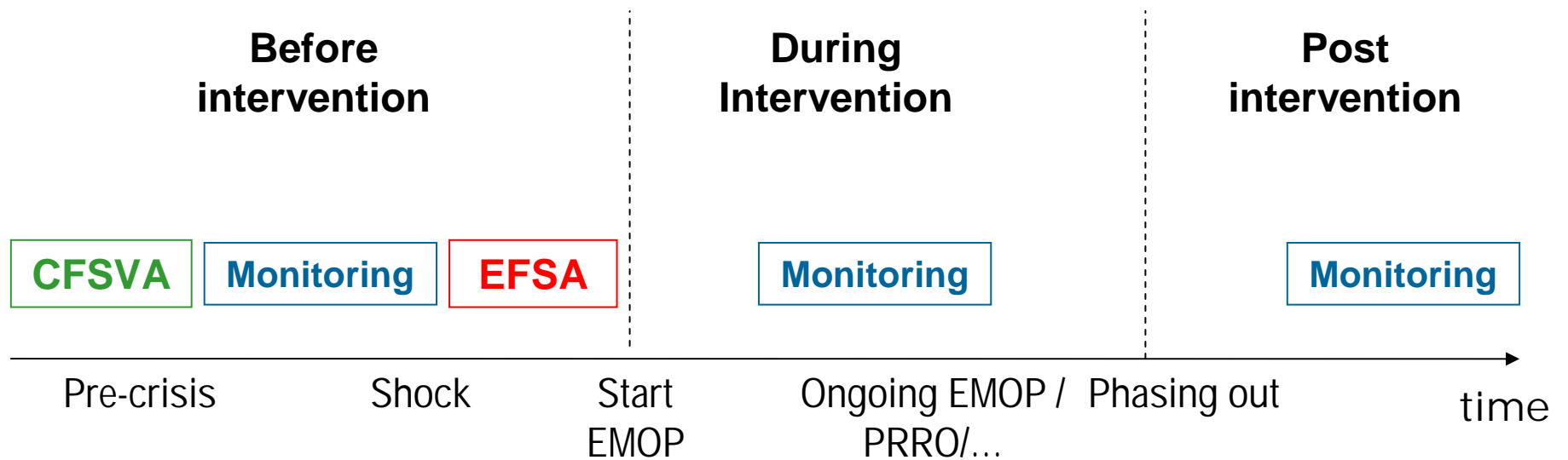
- How assessments are integrated in programmes
- Rationalizing and mainstreaming capacity and resources
- New directions in the context of emerging challenges
- Strategic partnerships

Existing Data Gathering and Analytical Tools

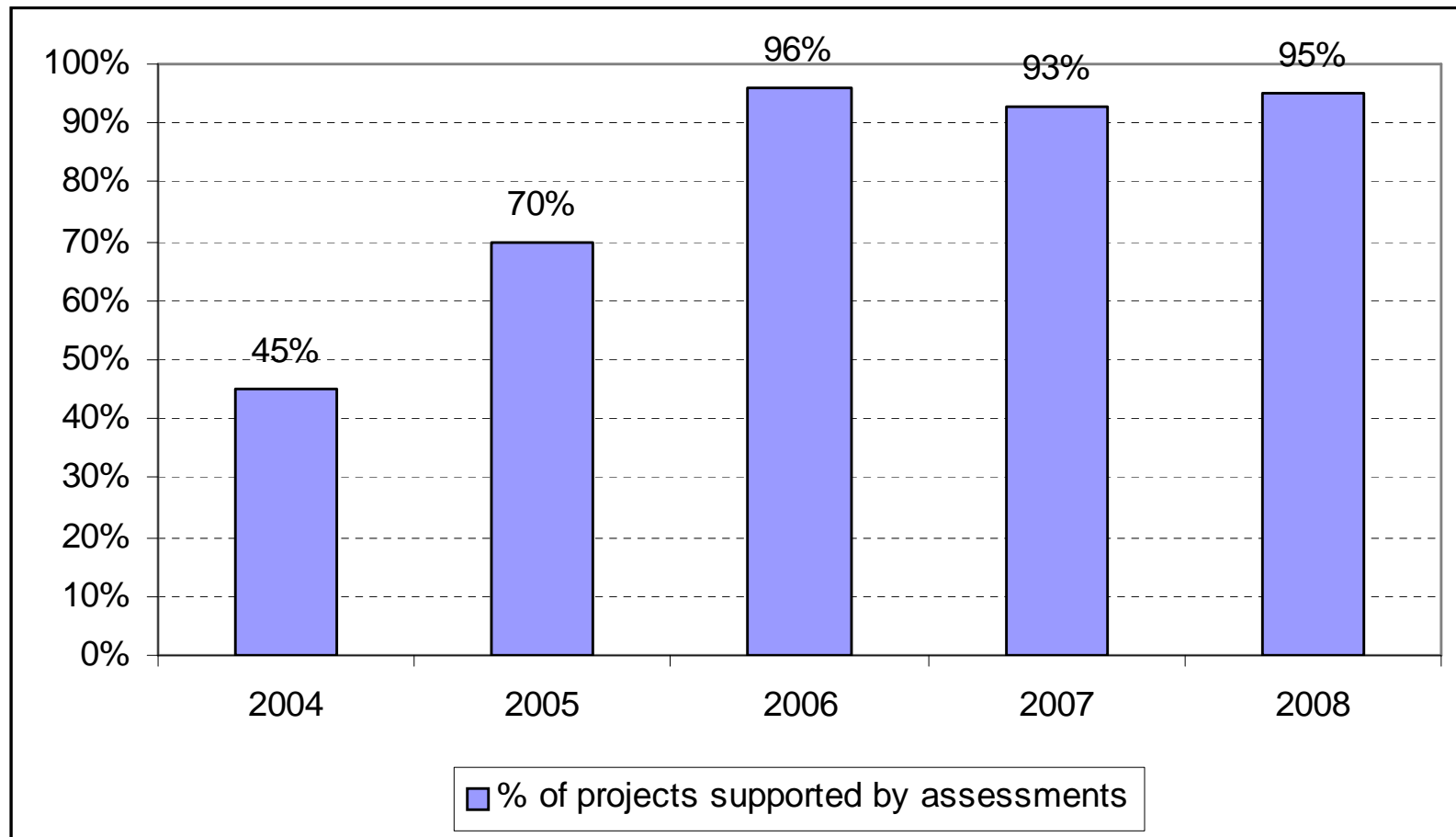
Comprehensive Food Security and Vulnerability Analysis



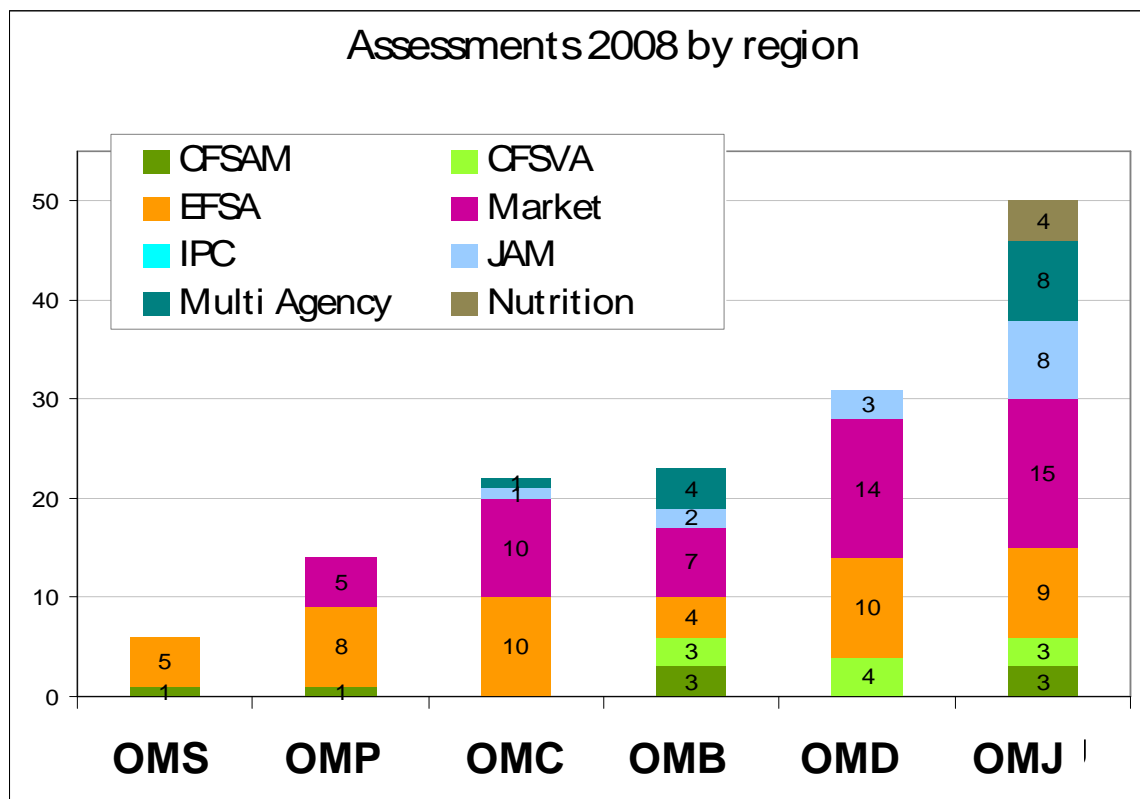
Assessments in the project cycle



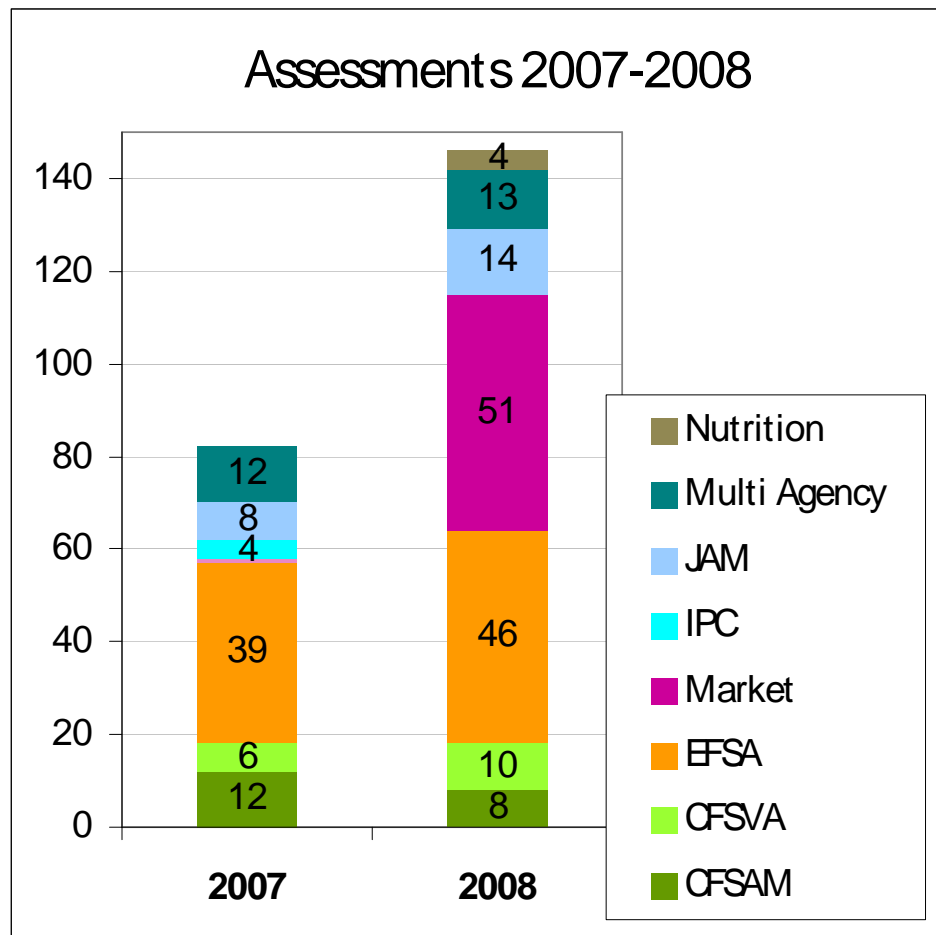
Projects supported by assessments



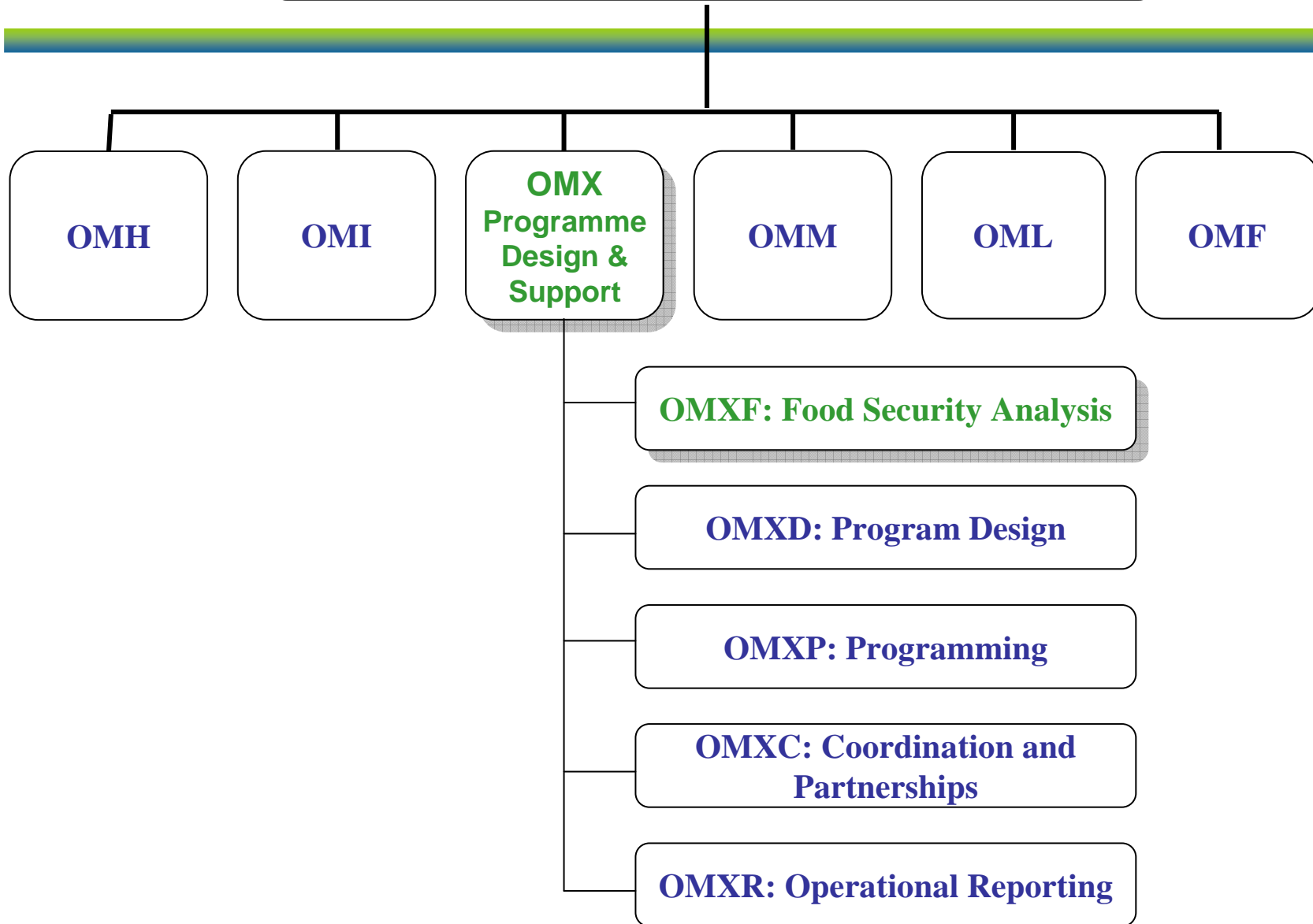
Assessments by region in 2008



From 81 assessments in 2007 to 146 in 2008

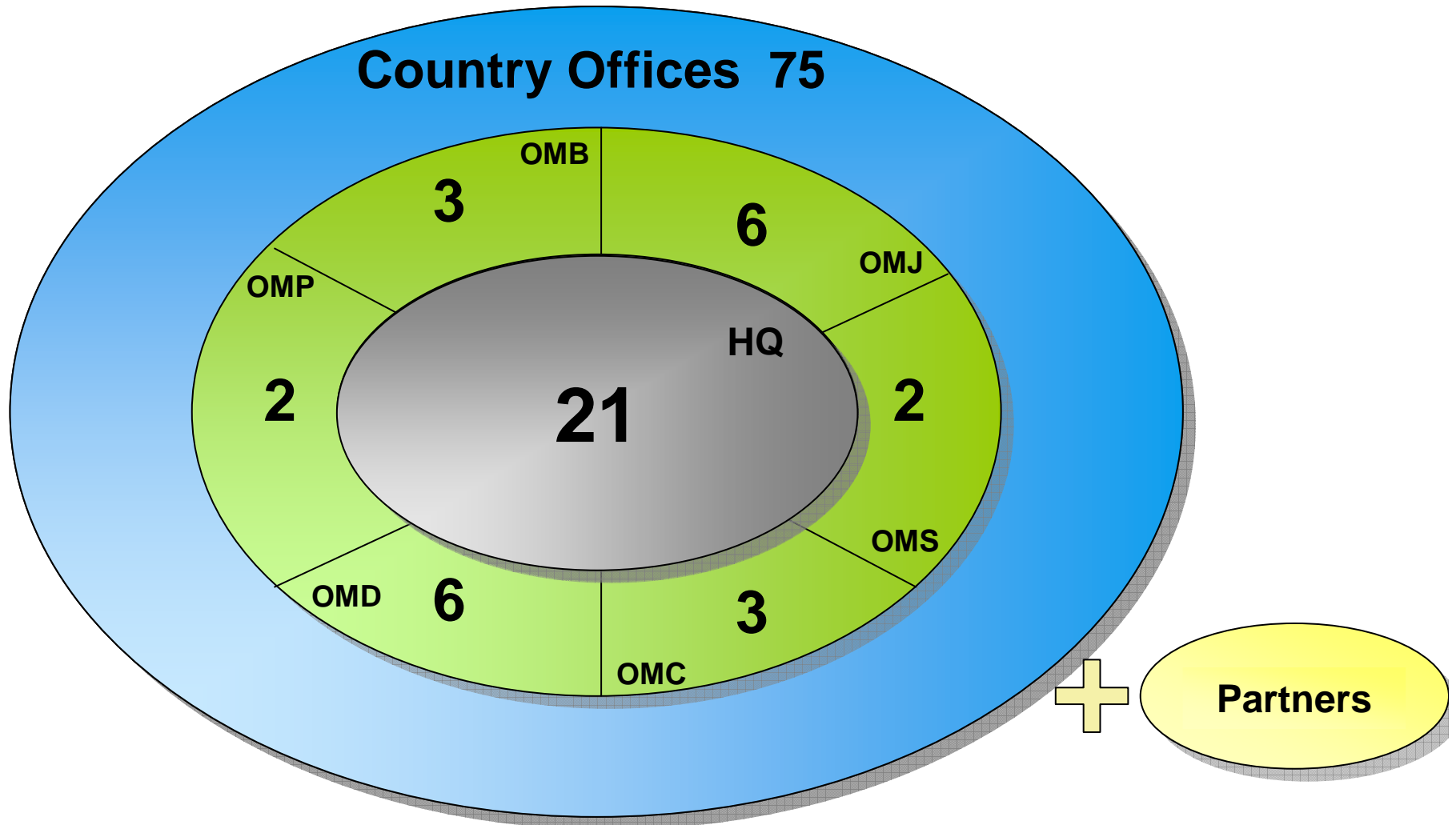


OM
Operations and Management Dept.



Mainstreaming of capacities

Total capacity



- Food consumption score
- Market analysis
- Assessment of urban areas
- Food security risk analysis
- Strengthened nutrition analysis
- Global Vulnerability Index
- Advanced technologies

Strengthened partnerships

- Governments, Regional bodies
- IPC partners (donors, FAO, NGOs)
- Inter-agency bodies
- World Bank

Thank you