

# GLOBAL OUTLOOK

2017 First Quarterly Operational Briefing

---

**Presentation to the WFP Executive Board**

12 January 2017 | Rome, Italy

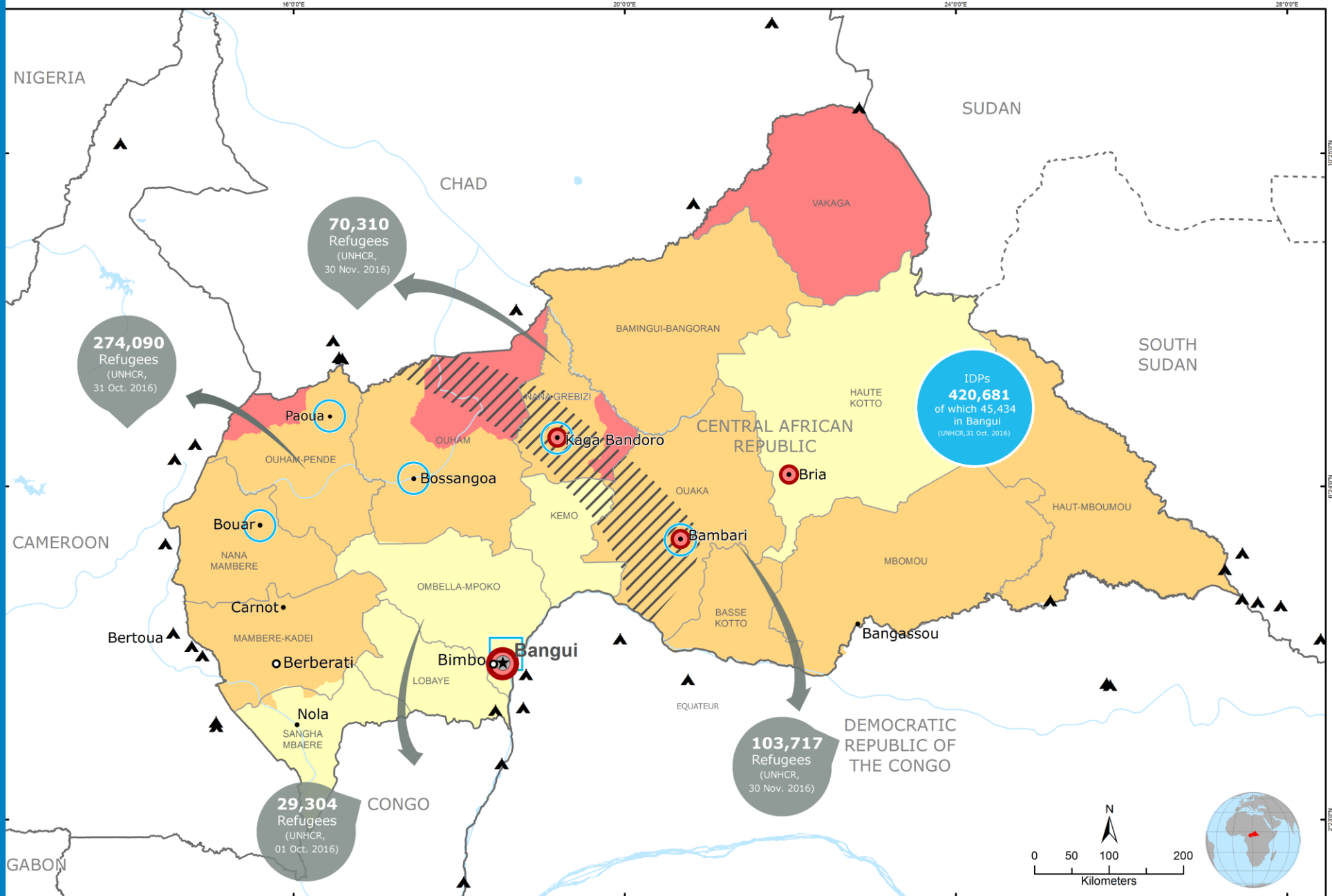


---

**Emergency Preparedness  
and Support Response  
Division (OSE)**

# Central African Republic

Operational Overview - January 2017



Date Created: 04 January 2017  
 Contact: [hq.gis@wfp.org](mailto:hq.gis@wfp.org)  
 Website: [www.wfp.org](http://www.wfp.org)  
 Prepared by: HQ, OSEP GIS  
 Map Reference: CAF\_OperationOverview\_A3L

### IPC Food Security Phase Classification - August 2016

- No data
- Crisis
- Emergency
- Minimal
- Stressed
- Famine

Zone of confrontation (frontline) between Ex-Seleka and Anti-balaka Militias

Major Clashes/ Conflict Hotspots

- Country Office
- Sub Office
- Field Office
- Refugee Camp

- National Capital
- Major Town
- Intermediate Town
- Small Town

- International Boundary
- Undetermined Boundary
- Prefecture Boundary

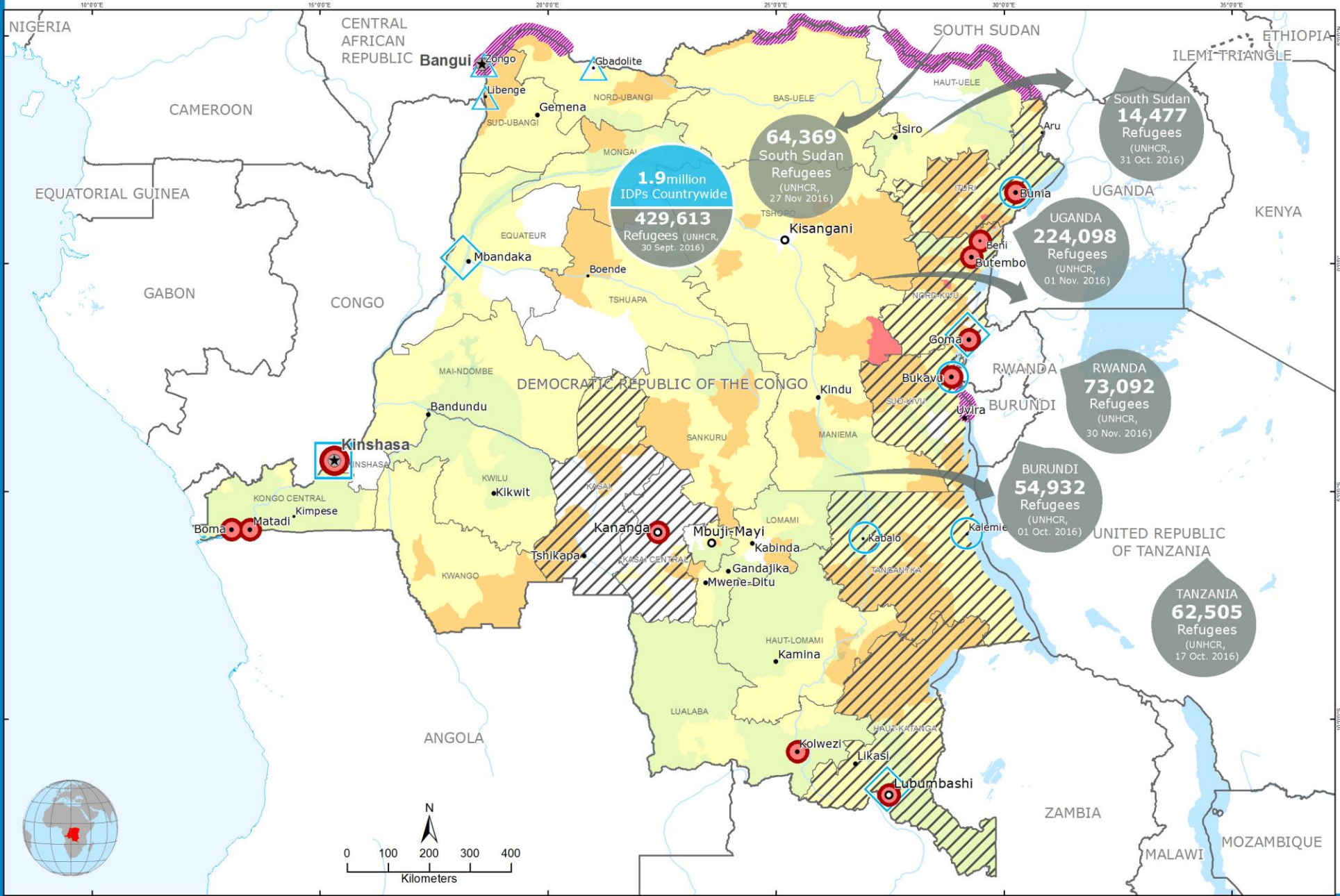
Data sources: WFP, UNGIWI, GeoNames, GAUL, GLCSC, SIGCAF, UNHCR, Cadre Harmonisé

The designations employed and the presentation of material in the map(s) do not imply the expression of any opinion on the part of WFP concerning the legal or constitutional status of any country, territory, city or sea, or concerning the delimitation of its frontiers or boundaries.

© World Food Programme 2016

# Democratic Republic of the Congo

Operational Overview - January 2017



Date Created: 06 January 2017  
 Contact: [hq.gis@wfp.org](mailto:hq.gis@wfp.org)  
 Website: [www.wfp.org](http://www.wfp.org)  
 Prepared by: HQ, OSEP GIS  
 Map Reference: COO\_OperationOverview\_A3L

### Acute Food Insecurity Phase June 2016

- No data
- Minimal
- Stressed
- Crisis
- Emergency
- Famine

- Conflict Hotspots
- Urban areas likely to be affected by election-related violence
- Potential Border Crossing Areas

- Country Office
- Area Office
- Sub Office
- Field Office

- National Capital
- Major Town
- Intermediate Town
- Small town

- International Boundary
- Undetermined Boundary

Data sources: WFP, UNGIW, GeoNames, GAUL, GLCSD, UNHCR, RCG, IPC

The designations employed and the presentation of material in the map(s) do not imply the expression of any opinion on the part of WFP concerning the legal or constitutional status of any country, territory, city or sea, or concerning the delimitation of its frontiers or boundaries.

# Burundi

Operational Overview - January 2017



Date Created: 06 January 2017  
 Contact: [hq.gis@wfp.org](mailto:hq.gis@wfp.org)  
 Website: [www.wfp.org](http://www.wfp.org)  
 Prepared by: HQ, OSEP GIS  
 Map Reference: B01\_OperationOverview\_A3L

### IPC Classification May - June 2016

- No data
- Minimal
- Stressed
- Crisis
- Emergency
- Famine

- Country Office
- Field Office
- Sub Office

- Refugee Camp
- Transit Center

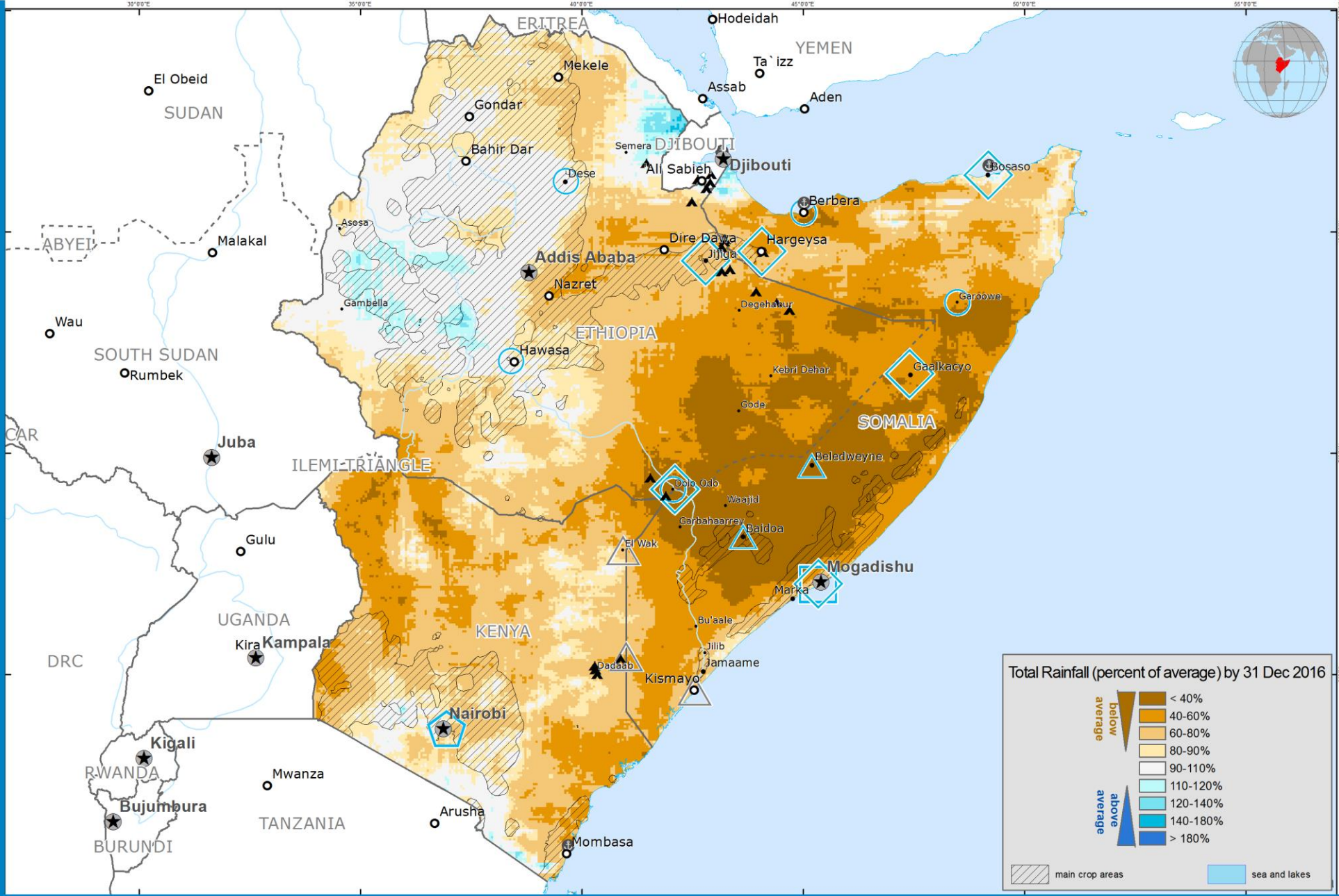
- National Capital
- Major Town
- Intermediate Town
- Small Town

- International Boundary
- Province Boundary
- Surface Waterbody

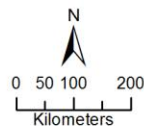
Data sources: UNGIWG, GeoNames, UNHCR, GAUL, OCHA, WFP  
 The designations employed and the presentation of material in the map(s) do not imply the expression of any opinion on the part of WFP concerning the legal or constitutional status of any country, territory, city or sea, or concerning the delimitation of its frontiers or boundaries.  
 © World Food Programme 2015

# Horn of Africa

Operational Overview - January 2017



Date Created: 18 January 2017  
 Contact: [hq.gis@wfp.org](mailto:hq.gis@wfp.org)  
 Website: [www.wfp.org](http://www.wfp.org)  
 Prepared by: HQ, OSEP GIS  
 Map Reference:  
 SGM\_OperationOverview\_A3L



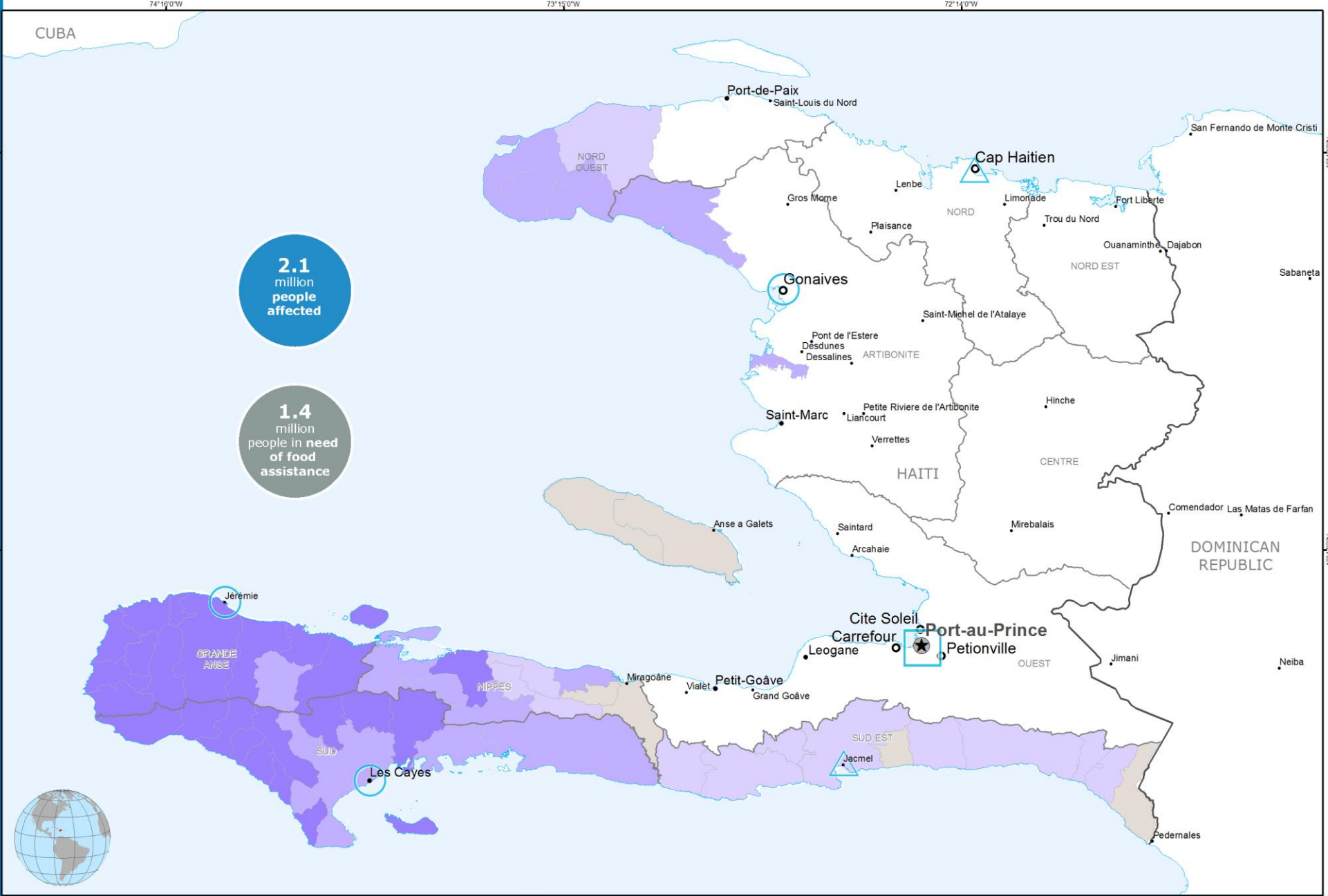
- Country Office
- Area Office
- Liaison Office
- Sub Office
- Field Office
- Presence Office
- National Capital
- Major Town
- Intermediate Town
- Small Town
- Refugee / IDP Camp
- International Boundary
- Undetermined Boundary
- First level admin Boundary

Data sources: WFP, UNCGIWC, GeoNames, GAUL, GLSCL, OCHA, UNHCR, VAM

The designations employed and the presentation of material in this map do not imply the expression of any opinion on the part of WFP concerning the legal or constitutional status of any country, territory, city or area, or concerning the delimitation of its frontiers or boundaries.

# Haiti

Operational Overview - January 2017



**2.1**  
million  
people  
affected

**1.4**  
million  
people in need  
of food  
assistance



Date Created: 06 January 2017  
 Contact: hq.gis@wfp.org  
 Website: www.wfp.org  
 Prepared by: HQ, OSEP GIS  
 Map Reference:  
 BDI\_OperationOverview\_A3L

**Impact (Rapid)**  
**Impact on Food Security and Priority Levels (Rapid EFSA, 07-10 October 2016)**

- Extreme food security impact (Priority 1)
- Very high food security impact (Priority 2)
- High food security impact (Priority 3)
- Moderate food security impact (Priority 4)

- Country Office
- Field Office
- Sub Office

- National Capital
- Major Town
- Intermediate Town
- Small Town

- International Boundary
- Province Boundary
- Surface Waterbody

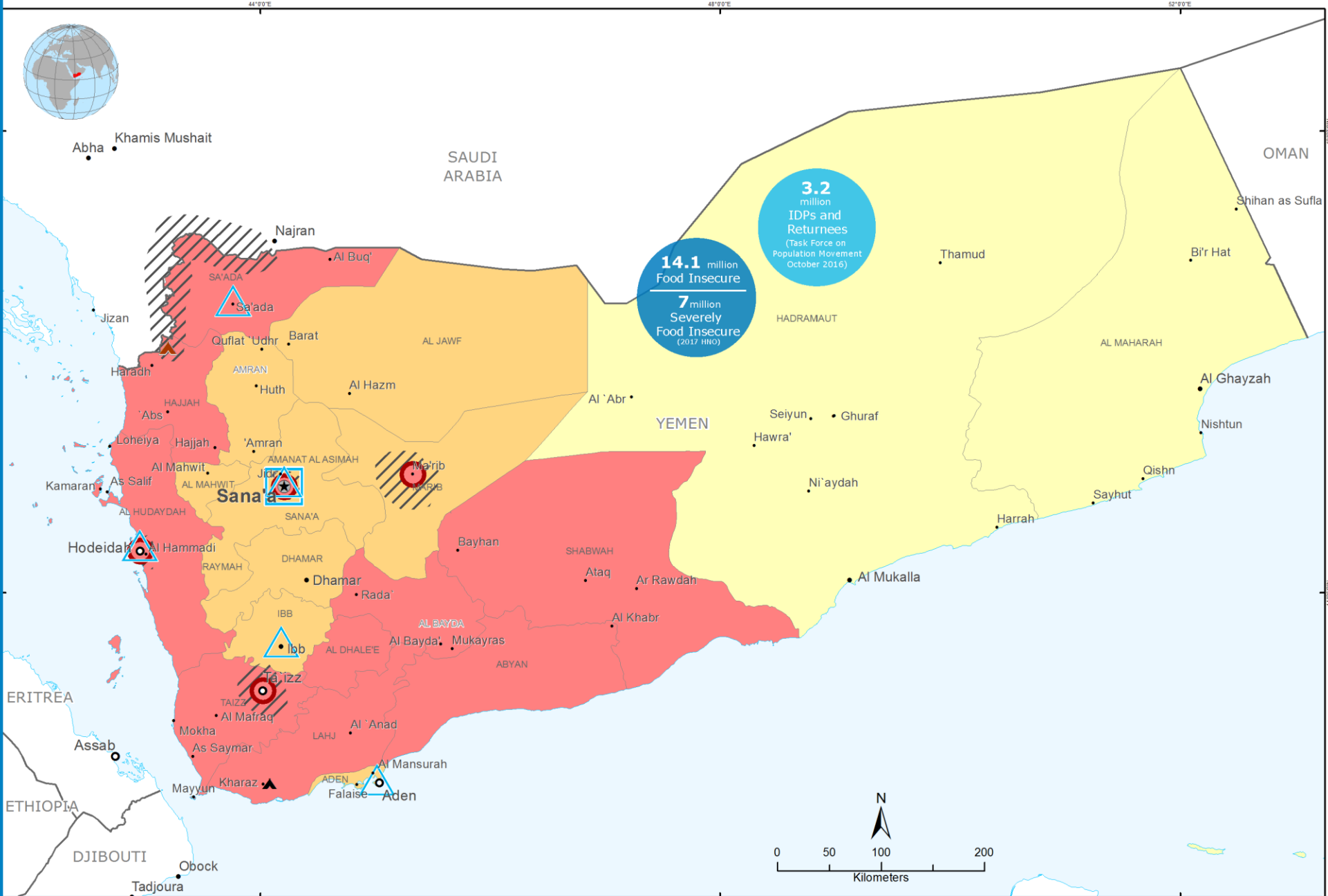
Data sources: UNGIWG, GeoNames, UNHCR, GAUL, OCHA, WFP

The designations employed and the presentation of material in the map(s) do not imply the expression of any opinion on the part of WFP concerning the legal or constitutional status of any country, territory, city or sea, or concerning the delimitation of its frontiers or boundaries.

© World Food Programme 2015

# Yemen

Operational Overview - January 2017



Date Created: 06 January 2017  
 Contact: [hq.gis@wfp.org](mailto:hq.gis@wfp.org)  
 Website: [www.wfp.org](http://www.wfp.org)  
 Prepared by: HQ, OSEP GIS  
 Map Reference: YEM\_OperationalOverview\_A3L

### IPC Classification June 2016

- No data
- Minimal
- Stressed
- Crisis
- Emergency
- Famine

- Conflict Hotspot
- Conflict
- Country Office
- Sub Office
- Field Office

- IDP Camp
- National Capital
- Major Town
- Intermediate Town
- Small Town
- International Boundary
- Governorate Boundary

Data sources: WFP, UNGI, GeoNames, GAUL, GLCSC, OCHA, UNHCR  
 The designations employed and the presentation of material in the map(s) do not imply the expression of any opinion on the part of WFP concerning the legal or constitutional status of any country, territory, city or area or concerning the delimitation of its frontiers or boundaries.  
 © World Food Programme 2017