



WFP EVALUATION

Evaluation Work Plan 2026-2028

WFP Office of Evaluation

Anne-Claire Luzot
Director of Evaluation

Sarah Longford
Deputy Director of Evaluation



World Food
Programme

SAVING
LIVES
CHANGING
LIVES

May 2025

Evaluation work planning in changing context

Key questions informing prioritization

- What must be prioritized ?
- What we will stop doing or do differently?
- What can we scale down?

Principles

- Sustain 'core business' as much as possible (coverage norms)
- Retain status & integrity of function to best serve WFP
- Retain scope for agility

Evaluation function priorities moving forward

Centralized evaluations

- 2 global evaluations (policy or strategy),
- 1 synthesis
- 1 corporate emergency evaluation
- Between 10 to 12 CSP evaluations (risk of not meeting the 70% expected coverage every year)

Decentralized evaluations

- Provide sufficient technical support and quality assurance to country offices to deliver DEs on time to expected quality standard (About 50% of DEs donor demanded)

Impact evaluation

- Continued delivery and dissemination of evidence and fundraising

Cross-cutting

- Engagement across functions to ensure timely evaluation evidence use

What will we stop doing or do differently?

- Turning some of the in-person activities to **virtual engagement**
- **Missions** (1 person only)
- **Internalize**
 - Delivery of synthesis evaluations
 - Quality support to decentralized evaluations
 - Preparation of summaries of evaluation evidence

What will be scaled down?



CSP
evaluation
coverage



Decentralized
evaluation
coverage



Number of
impact
evaluations



Participation in
inter-agency
and global
joint
evaluations



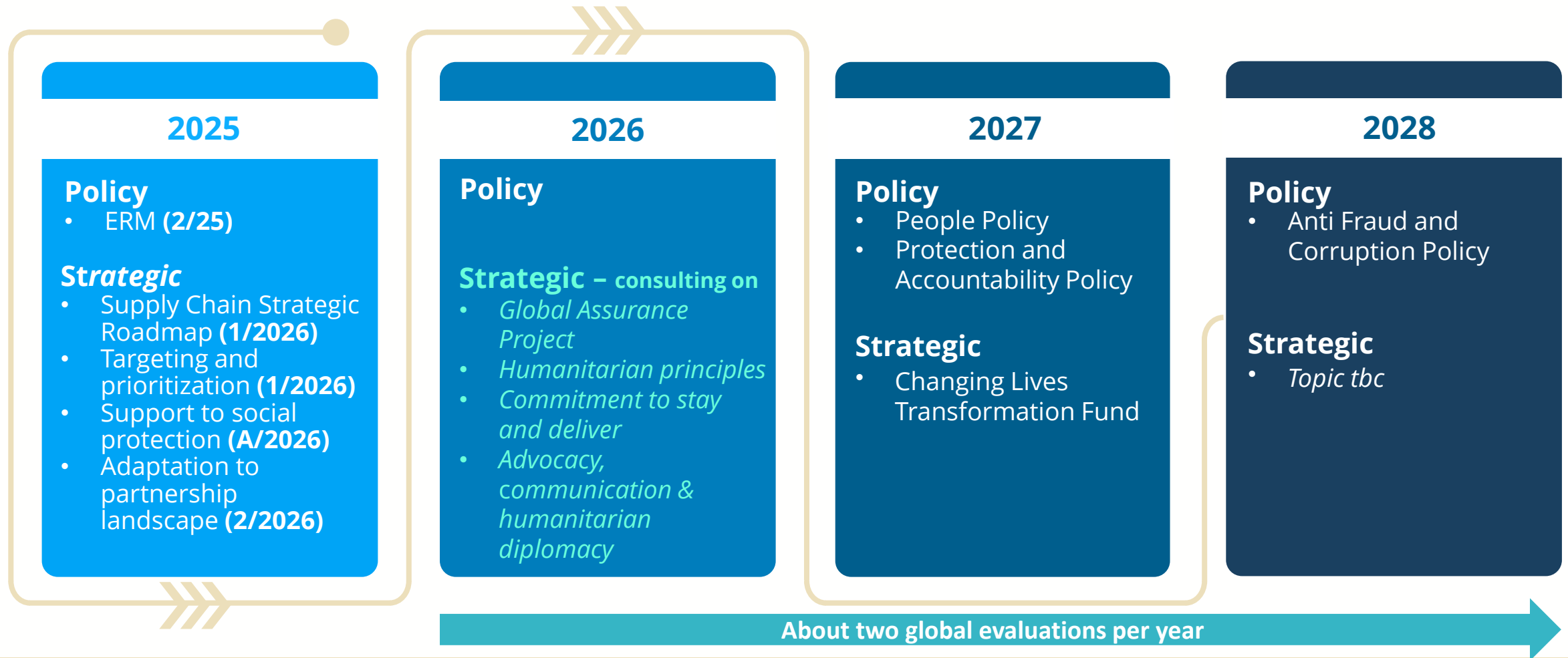
Evaluation
capacity
development
activities



Guidance
updates

Proposed programme of work for centralized evaluations 2026-2028

Strategic and Policy evaluations



Synthesis, corporate emergency and joint evaluations

2025

Corporate emergency

- Ukraine (A/25)
- Yemen (2/25)
- Sudan regional crisis (A/26)

Synthesis

- WFP's role in humanitarian co-ordination (A/2026)

Joint/inter-agency

- UNSCDFs
- UN Disability Inclusion
- Collective response to COVID-19
- Joint Synthesis People Pillar
- Türkiye/Syria Earthquake
- Ukraine synthesis
- Somalia
- IAHE Synthesis

2026

Corporate emergency

- Haiti

Synthesis – consulting on

- *Piloting*
- *Programme quality*

Joint/inter-agency

- Topic tbc

2027

Corporate emergency

- Topic tbc

Synthesis

- Topic tbc

Joint-interagency

- Topic tbc

2028

Corporate emergency

- Topic tbc

Synthesis

- Topic tbc

Joint-interagency

- Topic tbc

Country Strategic Plan evaluations

2025

- Caribbean MPC
- Congo ROC
- Mozambique
- Tajikistan*
- South Sudan
- Zimbabwe
- Togo

- Lebanon
- Bangladesh
- Cameroon
- Togo

2026

12 CSPEs

- Lebanon
- Bangladesh
- Cameroon
- Togo
- Iran
- Afghanistan
- Pacific
- Guinea Bissau
- Nigeria

Consulting on:

- ONE OF Pakistan, Sri Lanka, India or Kyrgyzstan
- EITHER Kenya OR Tanzania
- EITHER Ecuador OR El Salvador

2027

Minimum 10

[challenge to maintain 70% WFP Programme of work coverage]

2028

Minimum 10

[challenge to maintain 70% WFP Programme of work coverage]

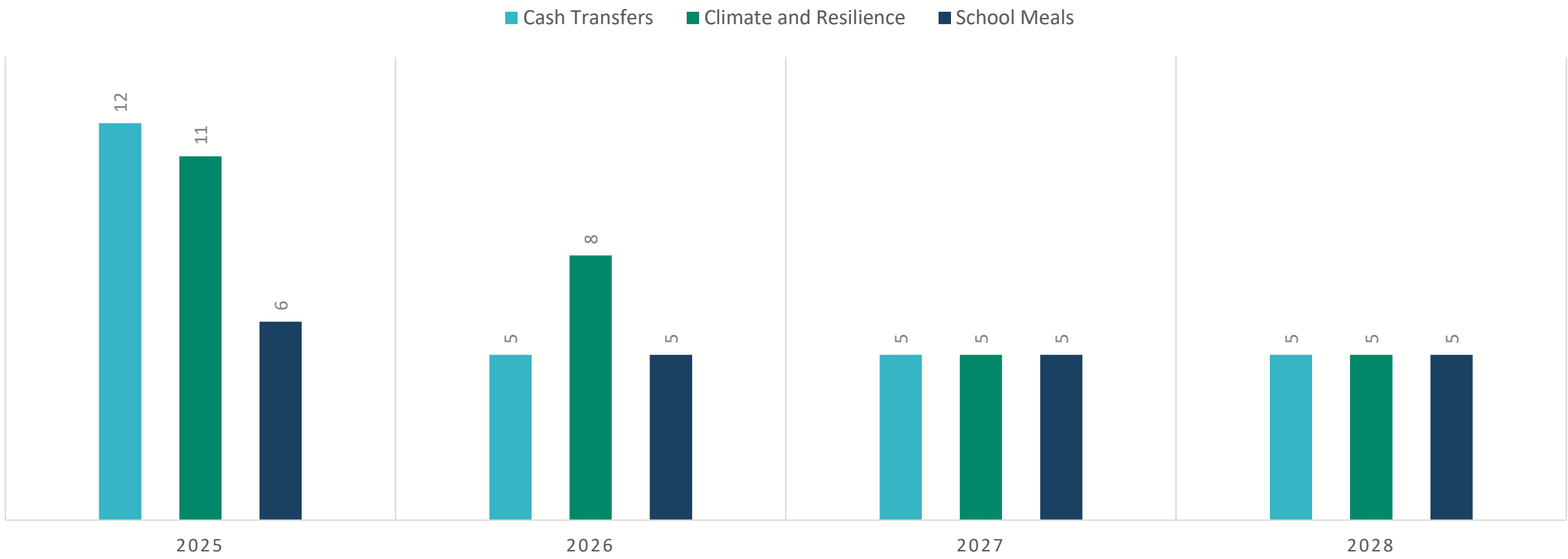
* Also included in OIGA WP 2025

Programme of work for impact evaluations

Impact evaluations (2025-2027)

	2025	2026	2027
Cash-based Transfers and Gender Window (Green = IE Trust Fund)	Under feasibility/ potential new IE: 1. Afghanistan (Humanitarian CBT) 2-5. Three new IEs on Digital Financial Inclusion and Nutrition (Gates Foundation) Finishing in 2025: 6. DRC (Humanitarian Targeting) 7. Ghana 2.0 (Farmers) 8. Haiti 9. Kenya 10. Lebanon (Humanitarian Targeting) 11. Peru (Humanitarian CBT) 12. Rwanda (CBT & Climate and Resilience)	Continued from 2025: 1-3. Three IEs on Digital Financial Inclusion and Nutrition (Gates Foundation) Finishing in 2026: 4. Afghanistan (Humanitarian CBT) 5. One new IE starting in 2026	IEs continued from 2026: 1-3. Three IEs on Digital Financial Inclusion and Nutrition (Gates Foundation) 4. CBT IE 5. One new IE starting in 2027
Climate and Resilience Window (Green = IE Trust Fund)	Under feasibility/ potential new IE: 1. DRC (BMZ joint with FAO and UNICEF) 2. Ghana (CLTF) 3. Mozambique (Anticipatory Action) 4. Niger (BMZ Long-term Follow-up) 5. Philippines (Anticipatory Action) 6. South Sudan (BMZ Long-term Follow-up) 7. Sudan (BMZ joint resilience project) Finishing in 2025: 8. Bangladesh (Anticipatory Action) 9. Ghana 1.0 (Farmers) 10. Mali (BMZ) 11. Nepal (Anticipatory Action)	Continued from 2025: 1. DRC (BMZ joint with FAO and UNICEF) 2. Ghana (CLTF) 3. Sudan (BMZ joint resilience project) Finishing in 2026: 4. Mozambique (Anticipatory Action) 5. Niger (BMZ Long-term Follow-up) 6. Philippines (Anticipatory Action) 7. South Sudan (BMZ Long-term Follow-up) 8. One new IE starting in 2026	IEs continued from 2026 1. DRC (BMZ joint with FAO and UNICEF) 2. Ghana (CLTF) 3. Sudan (BMZ joint resilience project) 4. Climate and Resilience IE 5. One new IE starting in 2027
School Meals Window	Under feasibility/ potential new IE: 1. Burundi 2. Madagascar 3. Malawi (Norad) 4. Zambia Finishing in 2025: 5. The Gambia 6. Guatemala (pilot)	Continued from 2025: 1. Burundi 2. Madagascar 3. Zambia Finishing in 2026: 4. Malawi (Norad) 5. One new IE starting in 2026	IEs continued from 2026 1. Burundi 2. Madagascar 3. Zambia 4. School-meals IE 5. One new IE starting in 2027

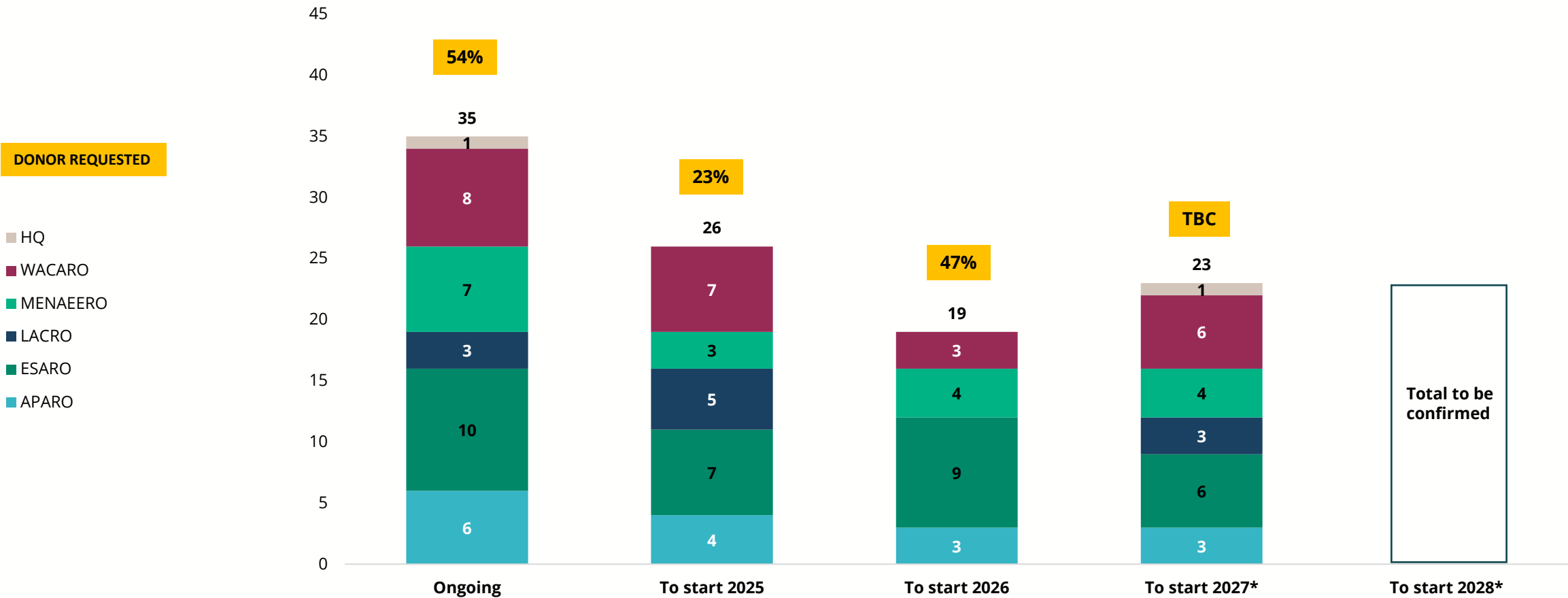
IE Workplan by Window



Programme of work for decentralized evaluations

Decentralized evaluations

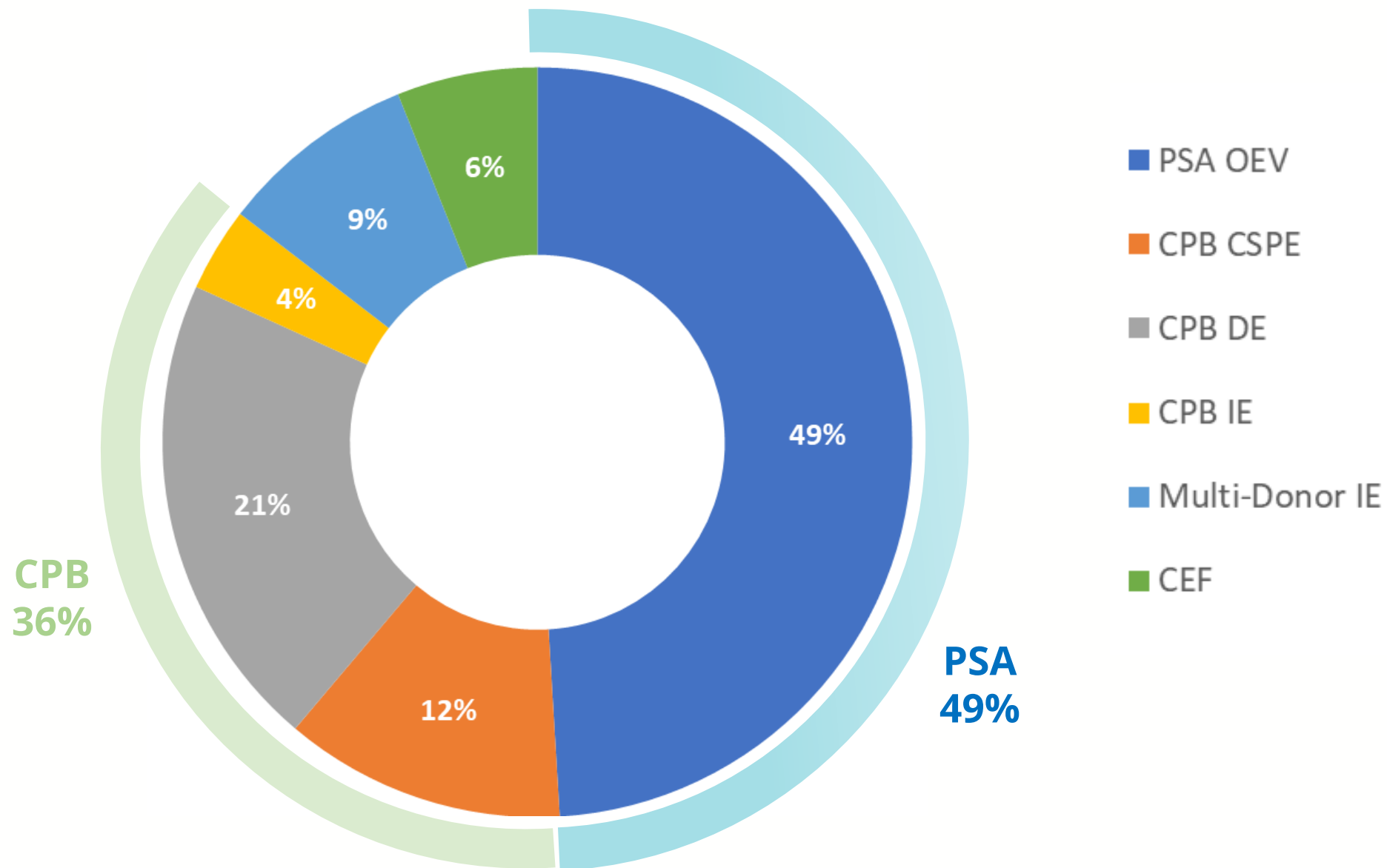
Ongoing and planned decentralized evaluations by Start Year and by Region/HQ



Questions on programme of work?

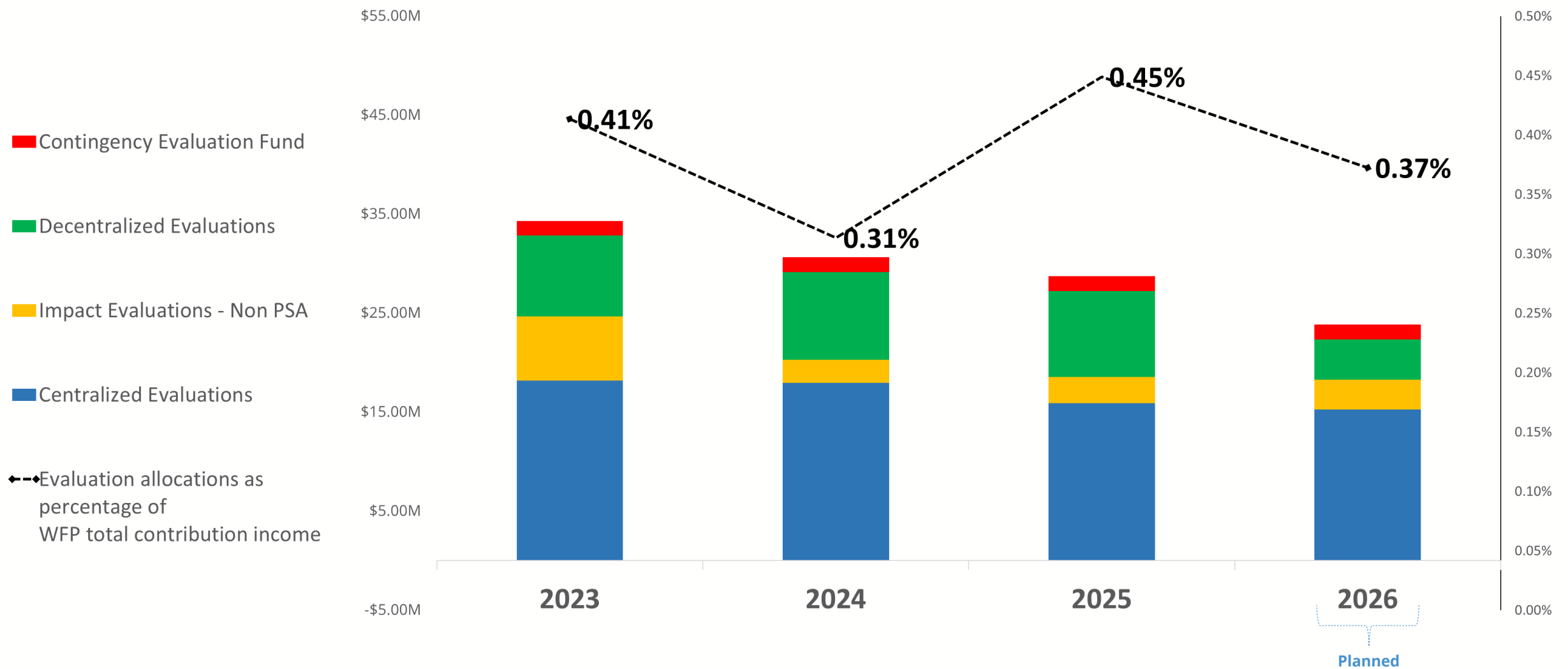
Resource requirements

Overall projected funding sources for WFP's evaluation function 2026



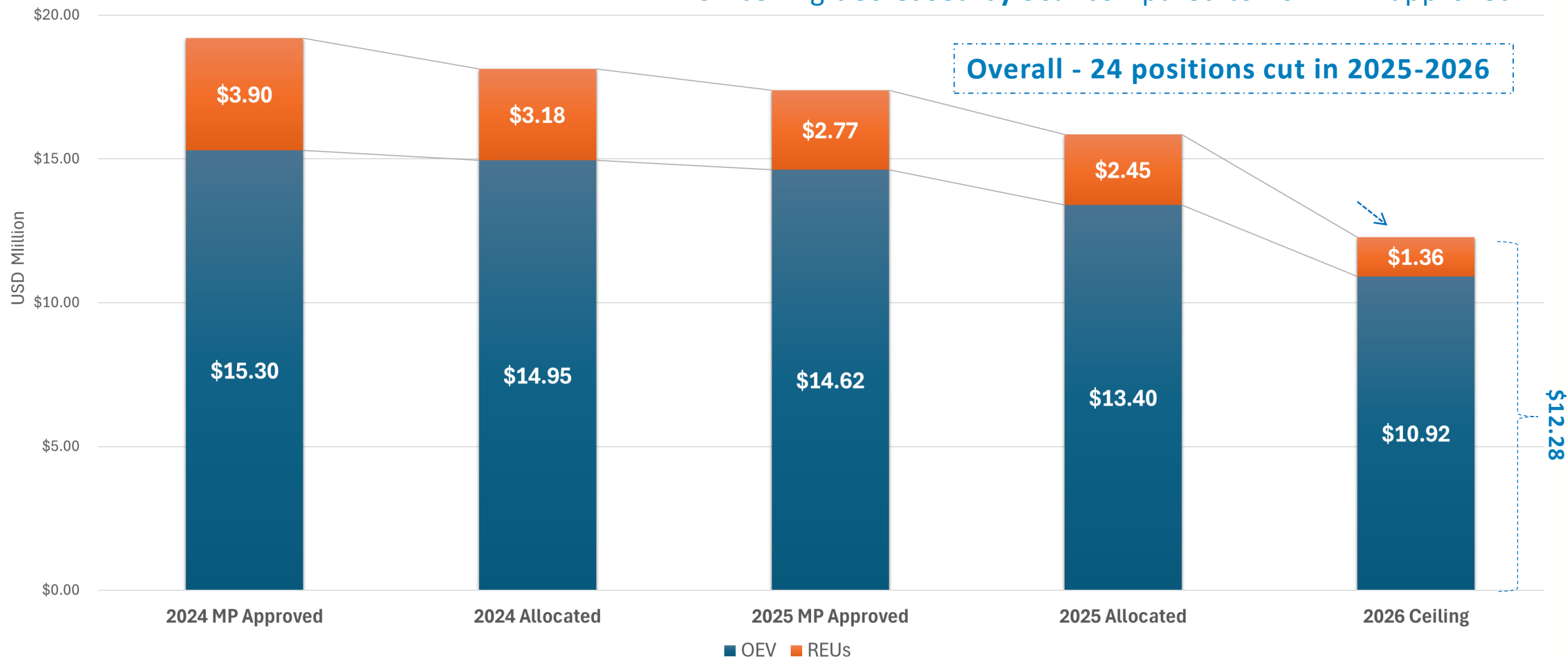
Resources allocated to evaluation 2023-2026

as percentage of WFP total contribution income, 2023-2026



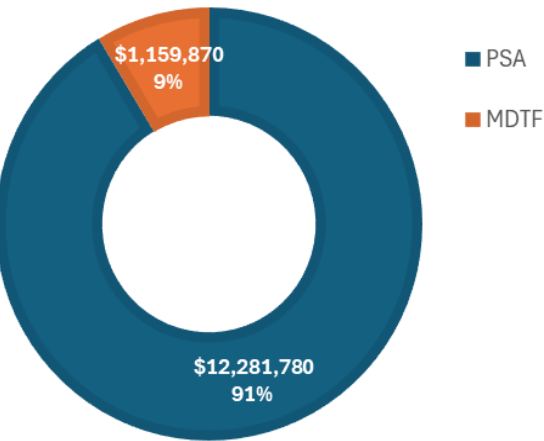
Evaluation Function PSA MP submission 2024-2026

- PSA ceiling **decreased by 29%** compared to 2025 MP approved
- PSA ceiling **decreased by 36%** compared to 2024 MP approved



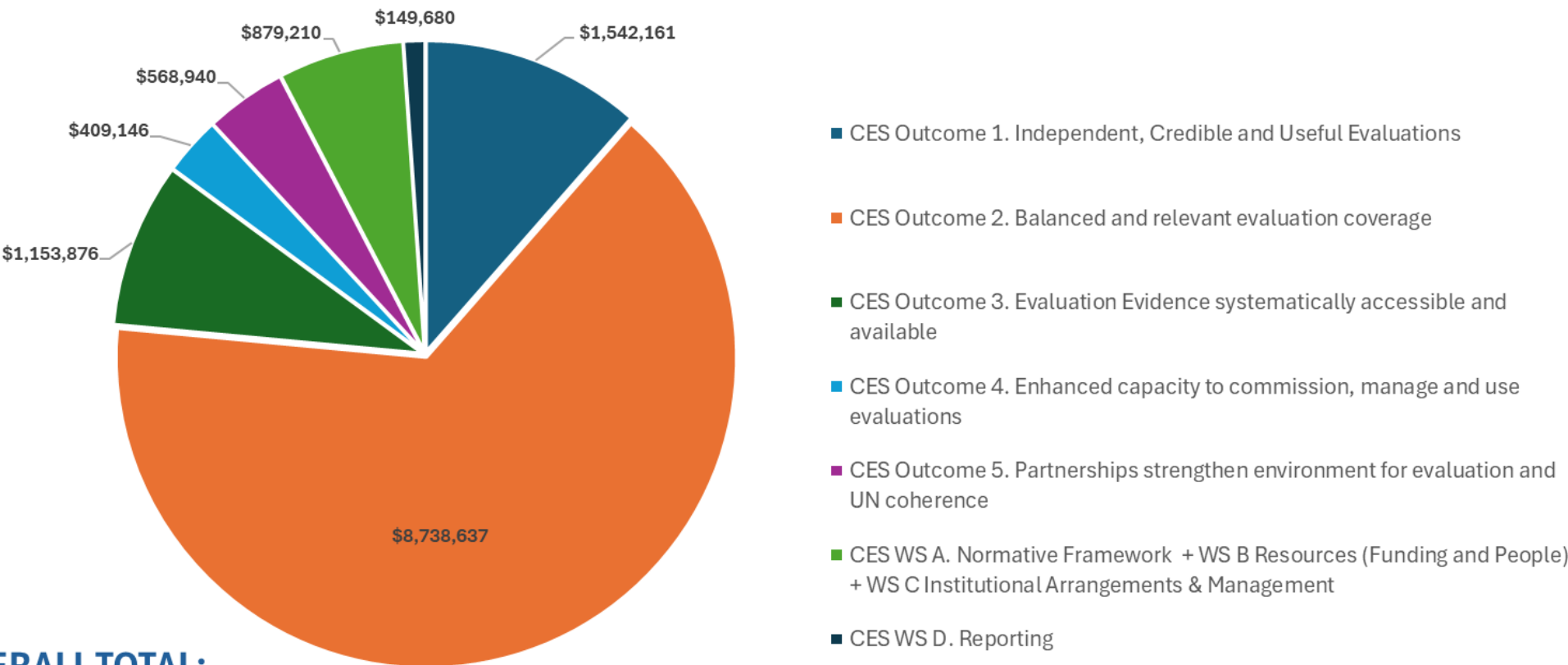
Evaluation Function Budget submission 2026

2026 BUDGET PLANNING
BY FUNDING SOURCE

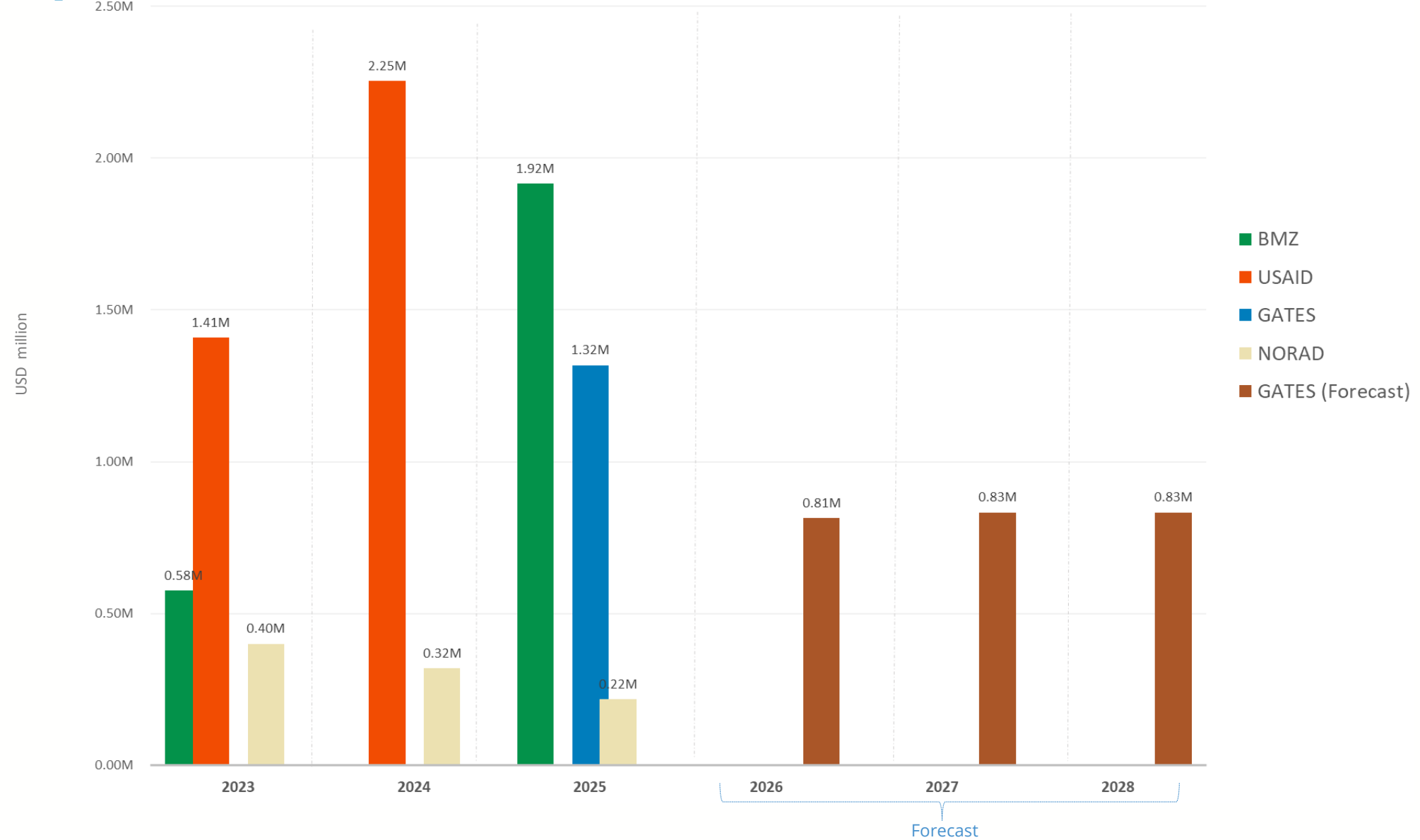


OVERALL TOTAL:
\$ 13,441,650

2026 PSA and TF BUDGET SUBMISSION PER ACTIVITY



Evolution of multi-donor/year trust fund resources for impact evaluation 2023-2028



Questions on resource requirements?