

Climate and Resilience

Autumn Induction Session

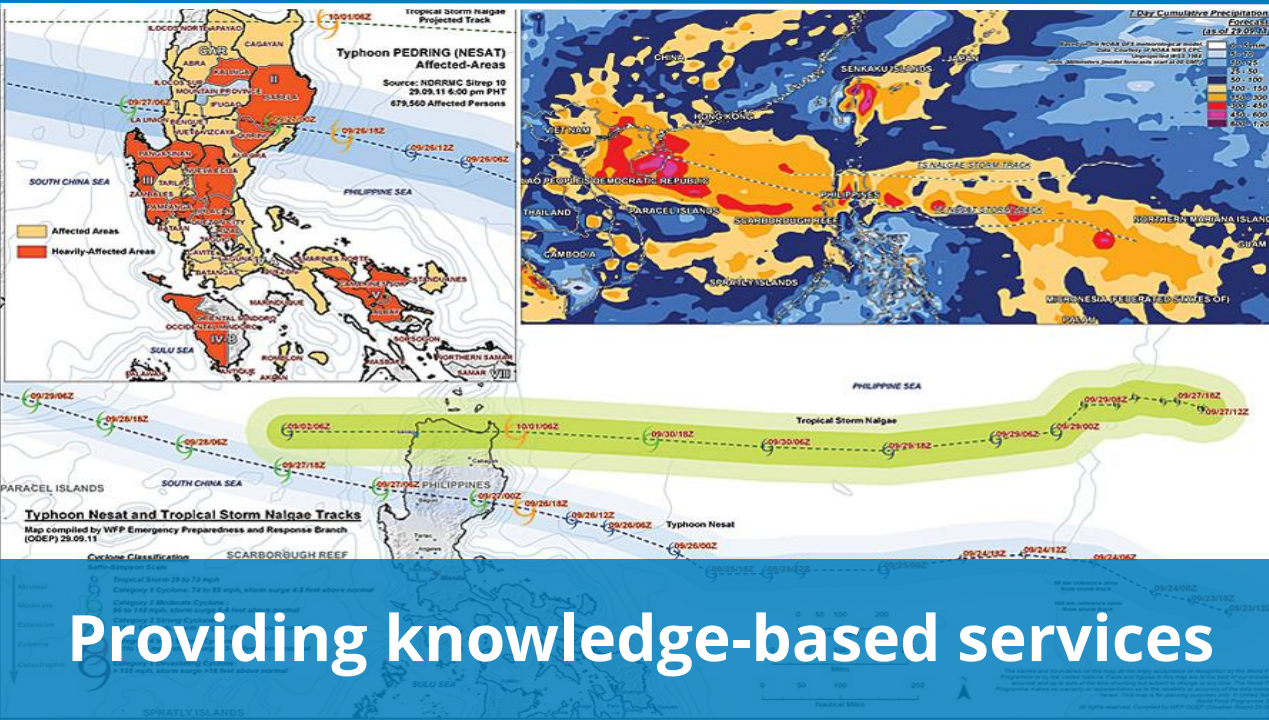
Oct 2024



WFP's value proposition and comparative advantage



Leveraging partnerships to support the most vulnerable



Providing knowledge-based services

Supporting innovative action at scale

Avert

Minimize

Address

Loss & Damage
from Climate Change



Less action taken on climate change mitigation, adaptation and disaster protection will lead to:

Catastrophic impacts borne by vulnerable women, children, communities, and ecosystems

Resilience is defined as the...

“ Capacity of individuals, households, communities, institutions and systems to prepare, anticipate, absorb, recover, adapt and transform in the face of shocks and stressors in a timely, efficient and sustainable manner. ”

WHERE

Countries and geographic areas where high levels of recurring food insecurity and malnutrition intersect with recurrent exposure to shocks and limited capacity to cope with them, which results in increases in humanitarian food assistance needs.

FOR WHOM

People and communities experiencing recurrent food insecurity and malnutrition who have limited capacity to manage shocks and stressors, especially in fragile situations and protracted crises

TO WHAT

Shocks and stressors that have widespread, damaging effects on people, communities and food systems and trigger food and nutrition crises.

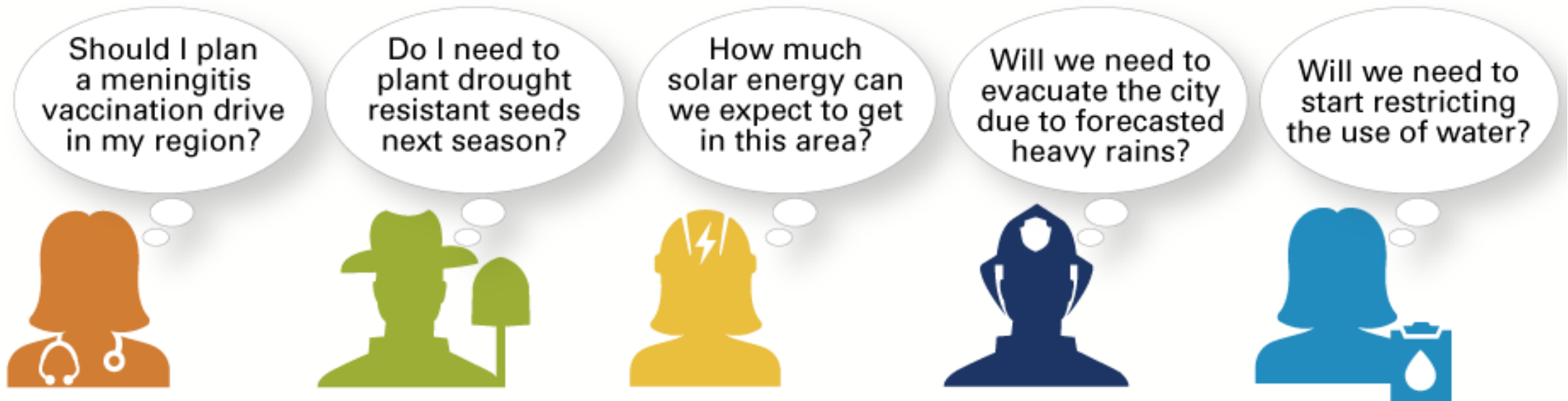
Early Warnings and Anticipatory action before climate shocks hit

- Protecting food security, lives and livelihoods from the impacts of predictable climate hazards.
- Strengthen national and local capacities to anticipate future emergencies more effectively
- Directly deliver anticipatory action at scale on behalf of, or in coordination with national government and partners



Delivering climate services to local institutions and smallholders

- Climate services provide climate information to help individuals and organizations make climate smart decisions
- Climate advisories can be provided via mobile phones, communal radios, extension services, volunteer networks, bulletin boards

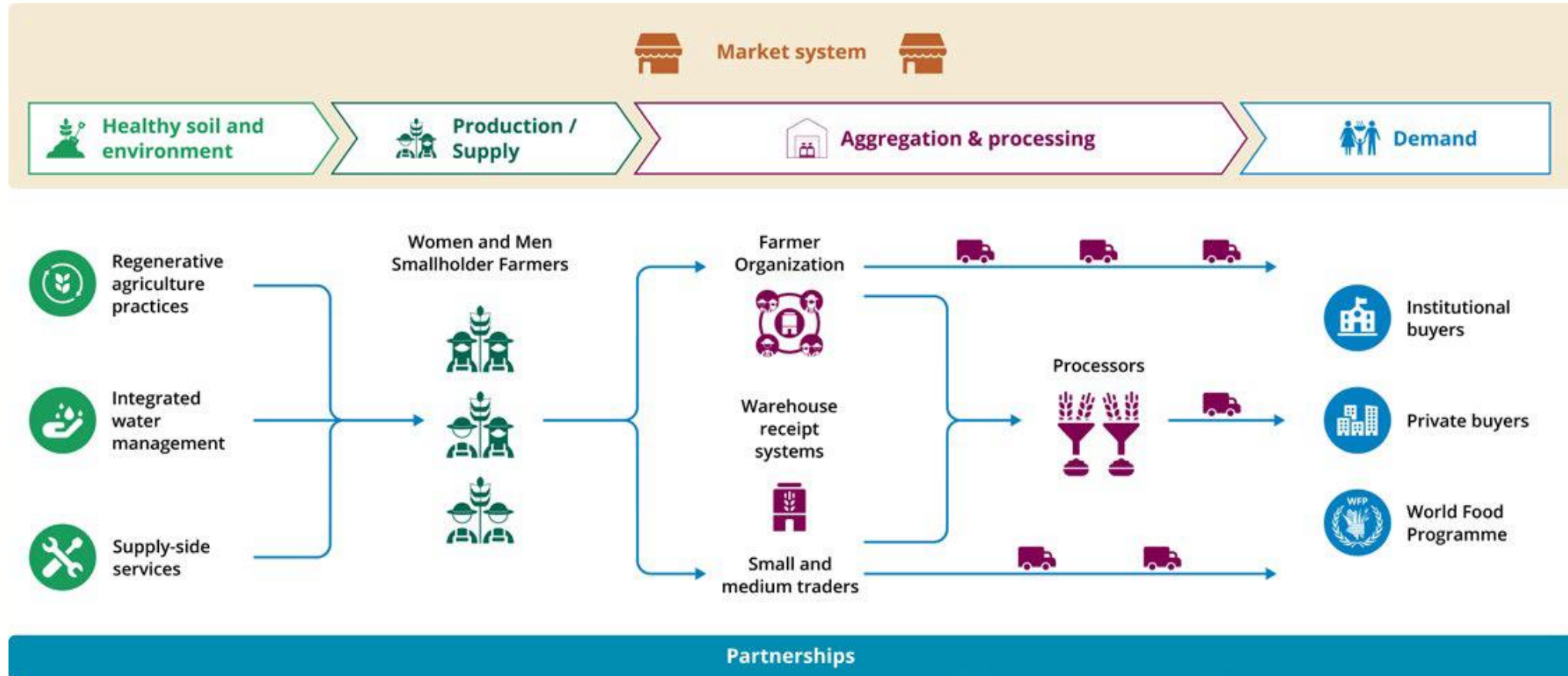


Risk financing solutions to strengthen climate protection



- Countries in the same region share climate risk and buy insurance to increase **fiscal resilience** in the event of large climate shocks
- African Risk Capacity (ARC): Countries buy insurance coverage against drought disasters. **WFP buys insurance, too** ('Replica policies')
- Insurance premiums can be covered by climate finance. Payouts happen quickly and accelerate WFP response, 3-4 months ahead of traditional aid.

Smallholder Agricultural Market Support



Inclusive finance

- **Financial protection for communities:**
 - Savings, revolving contingency funds
 - Microcredit for resilience investments
 - Microinsurance for smallholders



Distribution of microinsurance policies to womens' groups in Guatemala, June 2021

Regenerating ecosystems and restoring livelihoods

- **Ecosystem based solutions**
- **Asset creation**
- **Livelihood activities**
- **Regenerative action**
- **Climate resilient infrastructure**



Integrating clean & efficient energy solutions in WFP's activities



Clean Energy for Cooking

(stoves, fuels, woodlots, water heating)



Renewable energy for food production

(irrigation, pumping, tilling)



Efficient energy for food processing

(milling, pressing, par-boiling rice and beans)



Renewable energy for food preservation

(drying, refrigeration, smoking, pasteurizing)



Energy for other services

(trade, connectivity, lighting, education)