



World Food
Programme

SAVING
LIVES
CHANGING
LIVES

WFP Namibia 2G CSP 2025 - 2029

Executive Board Informal Consultation

July 2024

Namibia Country Context



UPPER-MIDDLE INCOME COUNTRY, STABLE POLITICAL ENVIRONMENT

Steady GDP growth post-pandemic with a growing population of 3 million people.



AGRICULTURAL LIVELIHOODS

Agriculture sector employs 22 percent of the population.



FOOD SECURITY CHALLENGES

Even in years of good rainfall more than a quarter of the population is food insecure.



HIGH VULNERABILITY TO CLIMATE CHANGE

El Niño: Government declared State of Emergency against drought in May 2024.



WIDESPREAD MALNUTRITION

Triple burden. High rates of stunting (16.8%), wasting (7.1%) and anaemia among women and girls in reproductive age (25%).



HIGH FOOD IMPORT DEPENDENCE

Namibia's food system produces only 43 percent of country's food demand.



HIGH UNEMPLOYMENT AND INEQUALITY

High unemployment at 19.6 percent (youth 38.4 percent). High Gini coefficient of 0.58 forecast for 2024.



GENDER EQUALITY AND PROTECTION

Progress in gender equality, but challenges remain in male-dominated roles such as agriculture.



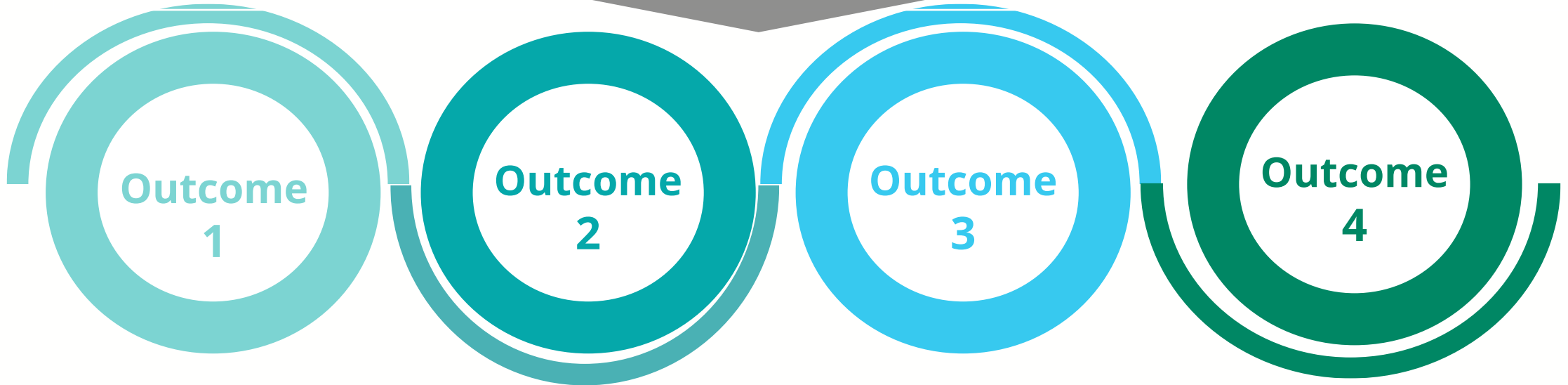
National Priorities

- Draft National Development Plan (NDP6)
- Climate change & early warning
- Resilience & social protection
- School feeding & nutrition
- Gender & protection



UNSDCF Priorities

- Effective governance & public service delivery
- Economic recovery, transformation & resilience
- Sustainable development & green growth opportunities
- Human development & community resilience



Outcome
1

Crisis-affected populations in Namibia are able to meet their food, nutrition needs in times of crises.

Outcome
2

By 2030, **national social protection systems** in Namibia are strengthened to more effectively benefit the most at-risk people and promote human capital development

Outcome
3

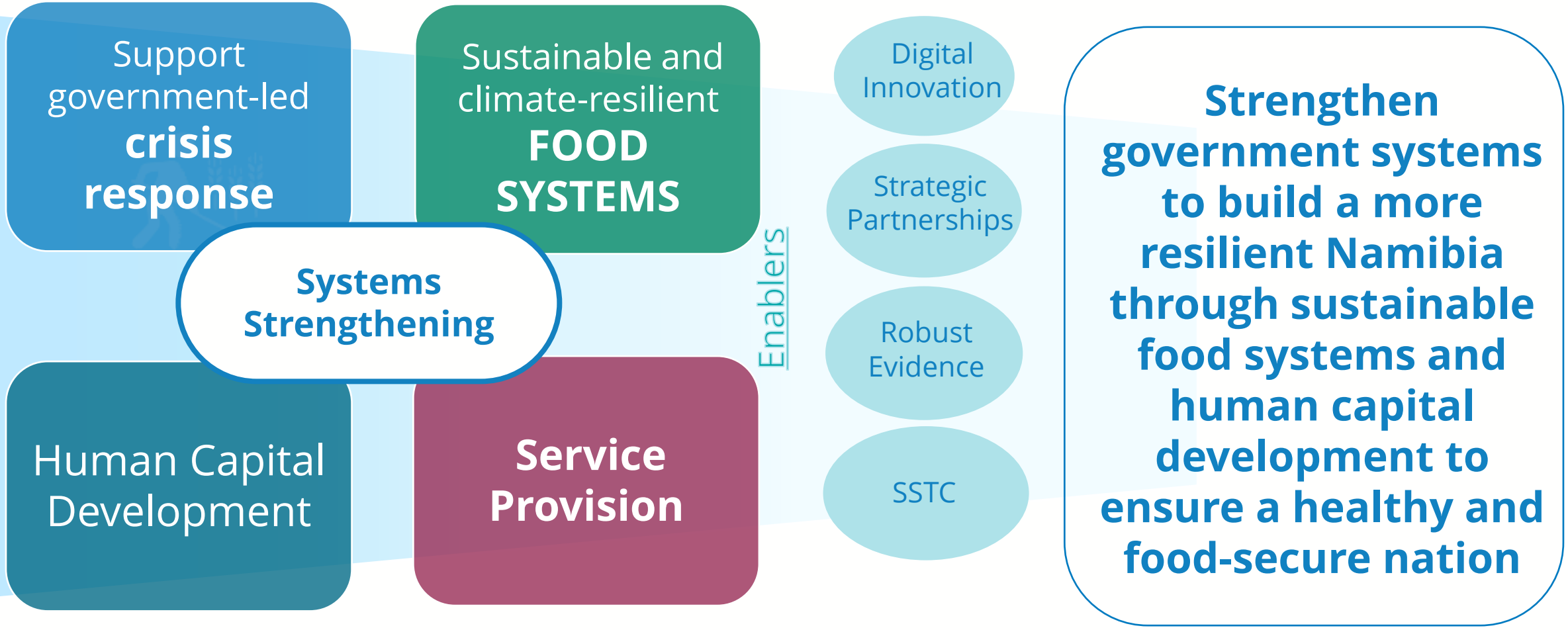
By 2030, **national food systems in Namibia** are strengthened to improve the livelihoods of smallholder farmers, ensuring the most at-risk communities have access to affordable healthy diets.

Outcome
4

By 2030, the Government and other actors in Namibia, especially those focusing on food systems, have leveraged **WFP services and expertise in supply chains**, enabling them to effectively support the people and communities most at-risk.

Strategic and Programmatic Vision

Strategic Vision



CROSS-CUTTING ISSUES: PROTECTION & ACCOUNTABILITY TO AFFECTED PEOPLE • GENDER EQUALITY & WOMEN'S EMPOWERMENT • NUTRITION INTEGRATION • ENVIRONMENTAL SUSTAINABILITY



THANK YOU