



World Food Programme

SAVING  
LIVES  
CHANGING  
LIVES

# WFP Sudan Operational Overview

Presented by WFP Country Director And Representative for Sudan

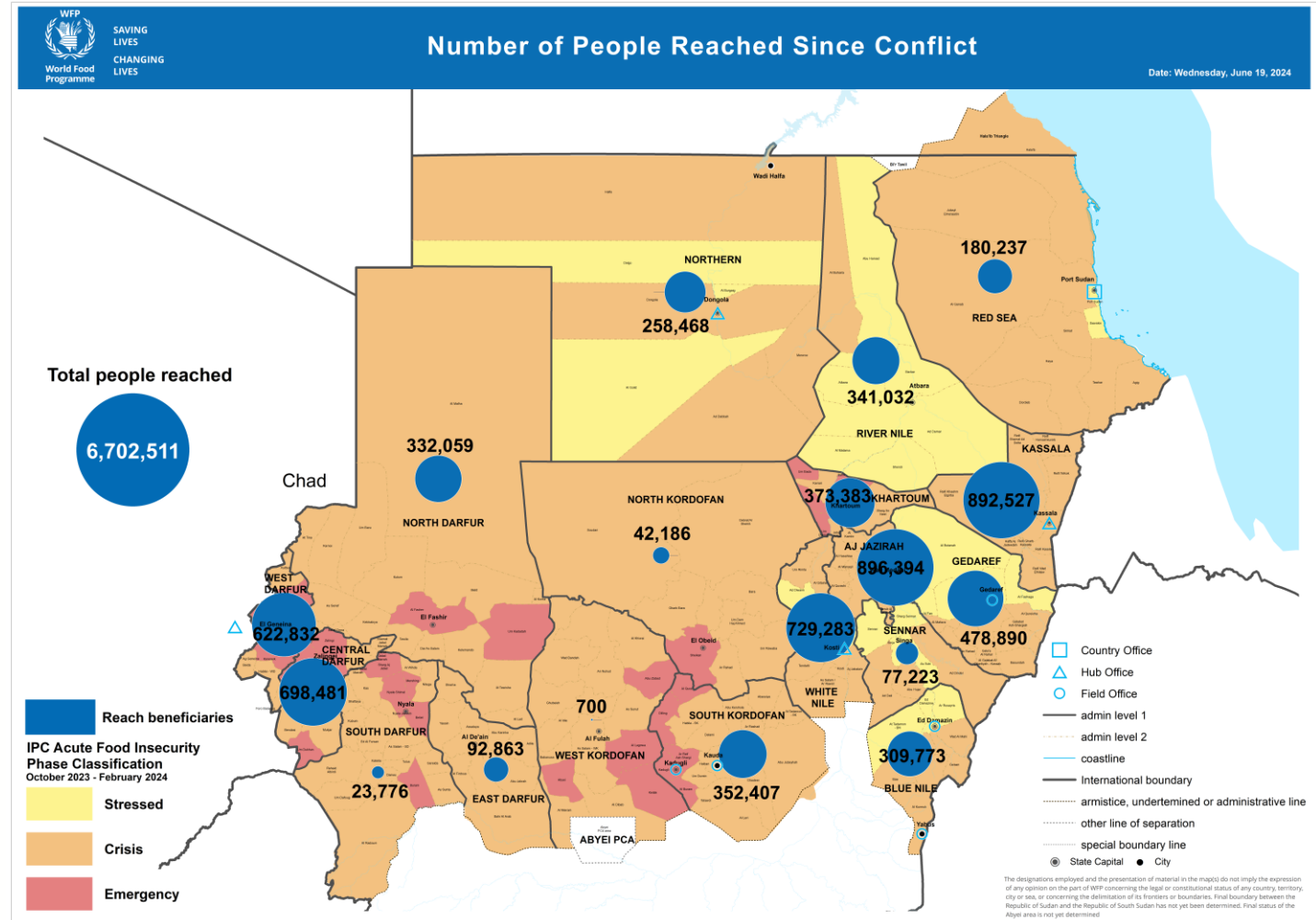
June 2024

# Operational and Food Security Context

- Over 10 million people are internally displaced within Sudan, one-third from Khartoum
- Over 2 million people have fled to neighbouring countries since April 2023
- Liquidity crisis remains a major constraint with limits on daily withdrawals of SDG 3 million a day constricting cash-based businesses
- Price of local food basket more than doubled from 2023 to 2024
- Crop production for staple cereals (sorghum, millet, wheat) 41% below the five-year average in the 2023-24 agricultural season
- Vulnerable populations include settlement-based refugees and IDPs, IDPs hosted by communities and staying in public shelters, and highly food insecure residents
- Food security remains the top priority for displaced households, followed by non-food items, healthcare and livelihood support (IOM)
- The war has destroyed critical infrastructure including food factories, hospitals, banks, agricultural land, bridges, gas pipelines, and entire industries

# Achievements Since the Start of the Conflict

- Supported **6.7 million people across all states** with GFA, CBT, nutritional assistance, school feeding programmes and resilience-building support
- Provided life-saving food and nutrition assistance to nearly 1.8 million people **across the Darfur region**
- Cash-based transfers have reached **half a million people, injecting nearly USD 10 million** into the local economy
- WFP continually adapted its operations amid evolving conflict dynamics



# IPC Preliminary Results

- The Integrated Phase Classification Assessment is nearly finalized with a Risk of Famine analysis ongoing
- Initial results point to an **alarming deterioration in food security** across the country
- Preliminary **June to October projections** show record levels of people in IPC3+ and significant increase in IPC4+



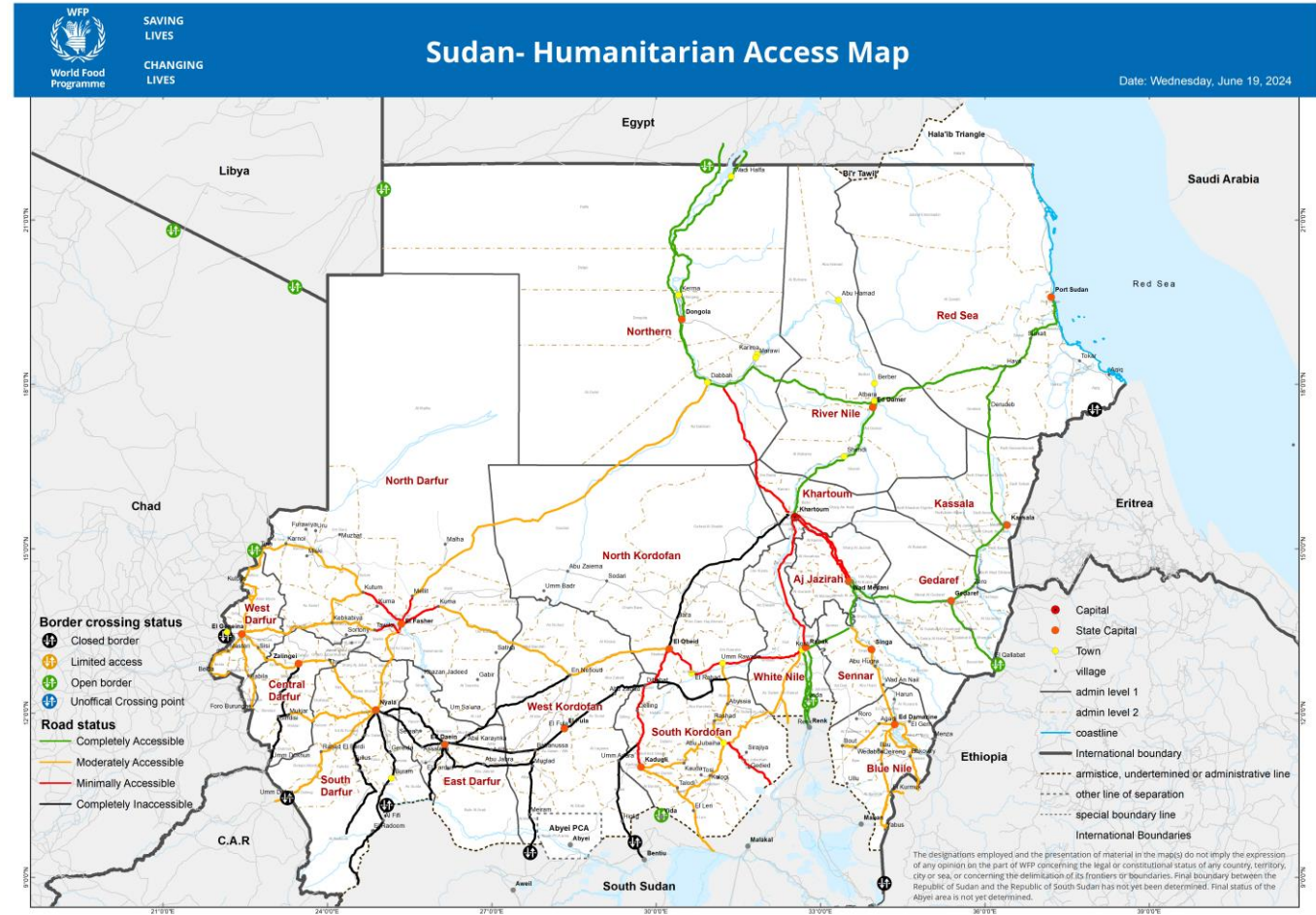
# WFP Scale Up Plans

- Scaling up to **reach over 5 million people** with **emergency food assistance** by end of 2024
- **Cash assistance to over 1.2 million people** in 12 states
- Prioritizing aid to **40+ hunger hotspots** at high-risk of slipping into IPC5
- **Increasing ration sizes** for refugees and those most at-risk of severe hunger
- **Expanding access** and opening new humanitarian corridors (cross-border and cross-line) while monitoring risks and additional costs
- **Prepositioning** and advance distributions ahead of imminent **rainy season**



# Operational and Access Challenges

- **Active conflict** and intensified fighting, increasing humanitarian needs
- **Access interferences** such as **closed borders and airspace**, clearance processes, threats, checkpoints/roadblocks and taxations/fees
- Increased **commodity lead times** and **limited resources** have reduced the efficacy of aid operations and essential sources of nutrition for vulnerable communities
- **Bureaucratic impediments** and **restrictions on the import** of aid supplies and humanitarian equipment
- **Limited network connectivity** across the country to coordinate with transporters, partners and actors on ground



# Access Breakthroughs

- A total of 5,000 MT of assorted WFP commodities have crossed the border from Chad into Darfur with food and nutrition supplies **for around half a million people in the Darfur region this year alone**
- WFP has had recent successes in achieving additional flexibility to use **alternative routes** after crossing Tine (Chad) into North Darfur to reach further parts of Darfur (Adre remains closed)
- Total of two convoys have crossed from Tine (Chad) into Darfur in the last month, with another on the way
- An additional **6,700 MT for 625,000 people** is planned **via Tine (Chad) in the coming weeks**
- Cross-border deliveries from South Sudan to South Kordofan and Blue Nile have included a total of 4,500 MT for around 175,000 people
- Successful cross-line movements from Port Sudan and Kosti across frontlines



# Question and Answers

