



**WFP EVALUATION**

# Evaluation Work Plan 2025-2027

WFP Office of Evaluation

Anne-Claire Luzot  
Director of Evaluation

Sarah Longford  
Deputy Director of Evaluation

**May 2024**



World Food Programme

SAVING  
LIVES  
CHANGING  
LIVES

**Proposed programme of work  
for centralized evaluations  
2025-2027**

# Policy evaluations

2024	2025	2026	2027
<p><b>Continued from 2023:</b></p> <ul style="list-style-type: none"> <li>• Environment (1/2025)</li> <li>• Emergency Preparedness (1/2025)</li> </ul>	<p><b>Continued from 2024:</b></p> <ul style="list-style-type: none"> <li>• Enterprise Risk Management (A/2025)</li> </ul>		<p><b>Continued from 2026:</b></p> <ul style="list-style-type: none"> <li>• Protection and accountability</li> <li>• People Policy (TBC)</li> </ul>
<p><b>New start:</b></p> <ul style="list-style-type: none"> <li>• Enterprise Risk Management (A/2025)</li> </ul>		<p><b>New starts:</b></p> <ul style="list-style-type: none"> <li>• Protection and accountability</li> <li>• People Policy (TBC)</li> </ul>	<p><b>New starts:</b></p> <ul style="list-style-type: none"> <li>• Anti-Fraud and Anti-Corruption Policy (TBC)</li> </ul>

# Strategic evaluations

2024	2025	2026	2027
<p><b>Continued from 2023:</b></p> <ul style="list-style-type: none"> <li>• Protection from Sexual Exploitation and Abuse (A/2024)</li> <li>• Mid-Term Evaluation of Strategic Plan (2022-2025) (2/2024)</li> <li>• Refugees and displacement (A/2025)</li> </ul>	<p><b>Continued from 2024:</b></p> <ul style="list-style-type: none"> <li>• Refugees and displacement (A/2025)</li> <li>• Supply Chain Roadmap (1/2026)</li> <li>• Targeting and prioritisation (1/2026)</li> </ul>	<p><b>Continued from 2025:</b></p> <ul style="list-style-type: none"> <li>• Social Protection</li> <li>• Partnership Landscape</li> </ul>	<p><b>Continued from 2026</b></p> <ul style="list-style-type: none"> <li>• New topic (TBD)</li> </ul>
<p><b>New starts:</b></p> <ul style="list-style-type: none"> <li>• Supply Chain Roadmap (1/2026)</li> <li>• Targeting and Prioritisation (1/2026)</li> </ul>	<p><b>New starts:</b></p> <ul style="list-style-type: none"> <li>• Social Protection</li> <li>• Partnership Landscape</li> </ul>	<p><b>New starts:</b></p> <ul style="list-style-type: none"> <li>• New topic (TBD)</li> </ul>	<p><b>New starts</b></p> <ul style="list-style-type: none"> <li>• Knowledge Management</li> <li>• Changing Lives Transformation Fund* (TBC)</li> </ul> <p>(*to be funded from CLTF)</p>

# Evaluation syntheses

2024	2025	2026	2027
<p><b>Continued from 2023:</b></p> <ul style="list-style-type: none"> <li>SDG Coalition Joint Synthesis (People Pillar co-lead)</li> <li>Cooperating Partners</li> </ul>	<p><b>Continued from 2024:</b></p> <ul style="list-style-type: none"> <li>SDG Coalition Joint Synthesis (People Pillar co-lead)</li> <li>WFP's Role, Relationships and Results in Middle Income Countries</li> </ul>	<p><b>Continued from 2025:</b></p> <ul style="list-style-type: none"> <li>WFP's role in Cluster Co-ordination</li> </ul>	<p><b>Continued from 2026:</b></p> <ul style="list-style-type: none"> <li>Piloting – Learning and Results</li> </ul>
<p><b>New start:</b></p> <ul style="list-style-type: none"> <li>WFP's Role, Relationships and Results in Middle Income Countries</li> </ul>	<p><b>New start:</b></p> <ul style="list-style-type: none"> <li>WFP's role in Cluster Co-ordination</li> </ul>	<p><b>New start:</b></p> <ul style="list-style-type: none"> <li>Piloting – Learning and Results</li> </ul>	<p><b>New start</b></p> <p><i>New topic (TBD)</i></p>

# Global joint evaluations

2024	2025	2026	2027
<p><b>Continued from 2023:</b></p> <ul style="list-style-type: none"><li>COVID 19 Global Evaluation Coalition: Strategic joint evaluation of the collective international development and humanitarian assistance response to COVID 19</li></ul>	<p><b>Consultation on topics for new joint evaluations on-going</b></p> <p><b>New start:</b></p> <ul style="list-style-type: none"><li>New topic to be determined</li></ul>	<p><b>Consultation on topics for new joint evaluations on-going</b></p> <p><b>New start:</b></p> <ul style="list-style-type: none"><li>New topic to be determined</li></ul>	

# Country strategic plan evaluations (based on 100% coverage norm)

2024 12 CSPE	2025 12 CSPE	2026 19 CSPE	2027 15 CSPE
<p><b><i>New starts:</i></b></p> <ul style="list-style-type: none"> <li>• Armenia CSP</li> <li>• China CSP</li> <li>• Côte d'Ivoire CSP</li> <li>• Democratic Republic of Congo CSP</li> <li>• Eswatini CSP</li> <li>• Guatemala CSP</li> <li>• Indonesia CSP</li> <li>• Liberia CSP</li> <li>• Sierra Leone CSP</li> <li>• Somalia CSP</li> <li>• Turkiye ICSP</li> <li>• Uganda CSP</li> </ul>	<p><b><i>New starts:</i></b></p> <ul style="list-style-type: none"> <li>• Bangladesh CSP</li> <li>• Cameroon CSP</li> <li>• Caribbean MCSP</li> <li>• Congo Rep. CSP</li> <li>• Laos CSP</li> <li>• Lebanon CSP</li> <li>• Mozambique CSP</li> <li>• Peru CSP</li> <li>• Sudan CSP</li> <li>• Togo CSP</li> <li>• Tajikistan CSP</li> <li>• Zimbabwe CSP</li> </ul>	<p><b><i>New starts:</i></b></p> <ul style="list-style-type: none"> <li>• Algeria ICSP</li> <li>• Benin CSP</li> <li>• Central African Republic CSP</li> <li>• Ecuador CSP</li> <li>• El Salvador CSP</li> <li>• Guinea-Bissau CSP</li> <li>• Honduras CSP</li> <li>• India CSP</li> <li>• Iran ICSP</li> <li>• Jordan CSP</li> <li>• Kenya CSP</li> <li>• Kyrgyz Republic CSP</li> <li>• Nigeria CSP</li> <li>• Pacific MCSP</li> <li>• Pakistan CSP</li> <li>• Plurinational State of Bolivia CSP</li> <li>• Sri Lanka CSP</li> <li>• Tanzania CSP</li> <li>• Ukraine ICSP</li> </ul>	<p><b><i>New starts:</i></b></p> <ul style="list-style-type: none"> <li>• Bhutan CSP</li> <li>• Cambodia CSP</li> <li>• Chad CSP</li> <li>• Dominican Republic CSP</li> <li>• Egypt CSP</li> <li>• Ghana CSP</li> <li>• Haiti CSP</li> <li>• Nepal CSP</li> <li>• Madagascar CSP</li> <li>• Malawi CSP</li> <li>• Mauritania CSP</li> <li>• Philippines CSP</li> <li>• Sao Tome &amp; Principe CSP</li> <li>• The Gambia CSP</li> <li>• Zambia CSP</li> </ul>



# Evaluations of emergency responses

	2024	2025	2026	2027
<b>Corporate emergency response evaluations (CEE)</b>	<p><b>Continued from 2023:</b></p> <p>Evaluations of WFP's corporate emergency responses in:</p> <ul style="list-style-type: none"> <li>• the Sahel and other Western and Central African countries (2018-2023)</li> <li>• Ukraine</li> <li>• Yemen</li> </ul>	<p><b>New start:</b></p> <ul style="list-style-type: none"> <li>• WFP's corporate emergency response to the Sudan Regional Crisis</li> </ul>	<p><b>New start:</b></p> <ul style="list-style-type: none"> <li>• 1 topic to be determined</li> </ul>	<p><b>New start:</b></p> <ul style="list-style-type: none"> <li>• 1 topic to be determined</li> </ul>
<b>Inter-agency humanitarian evaluations (IAHE)</b>	<p><b>Continued from 2023:</b></p> <p>Evaluations of the response to humanitarian crises in:</p> <ul style="list-style-type: none"> <li>• Northern Ethiopia</li> <li>• Afghanistan</li> </ul> <p><b>Synthesis</b> on the response to the humanitarian crisis in Ukraine</p> <p><b>New starts:</b></p> <p>Evaluations of responses to the humanitarian crises in:</p> <ul style="list-style-type: none"> <li>• Somalia</li> <li>• Turkiye/Syria</li> </ul>	<p><b>Continued from 2024:</b></p> <p>Evaluations of the response to humanitarian crises in:</p> <ul style="list-style-type: none"> <li>• Somalia</li> <li>• Turkiye/Syria</li> </ul> <p><b>Synthesis</b> on the response to the humanitarian crisis in Ukraine</p> <p><b>New starts:</b></p> <ul style="list-style-type: none"> <li>• 1 to 2 topics to be determined</li> </ul>	<p><b>New starts:</b></p> <ul style="list-style-type: none"> <li>• 1 to 2 topics to be determined</li> </ul>	<p><b>New starts:</b></p> <ul style="list-style-type: none"> <li>• 1 to 2 topics to be determined</li> </ul>



# Programme of work for impact evaluations

# Impact evaluation windows and workstream



Cash-based Transfers and Gender



Climate Change and Resilience



Humanitarian Workstream



School-based Programmes



Nutrition (paused)

Preparedness

Needs & Targeting

Intervention

Transitions

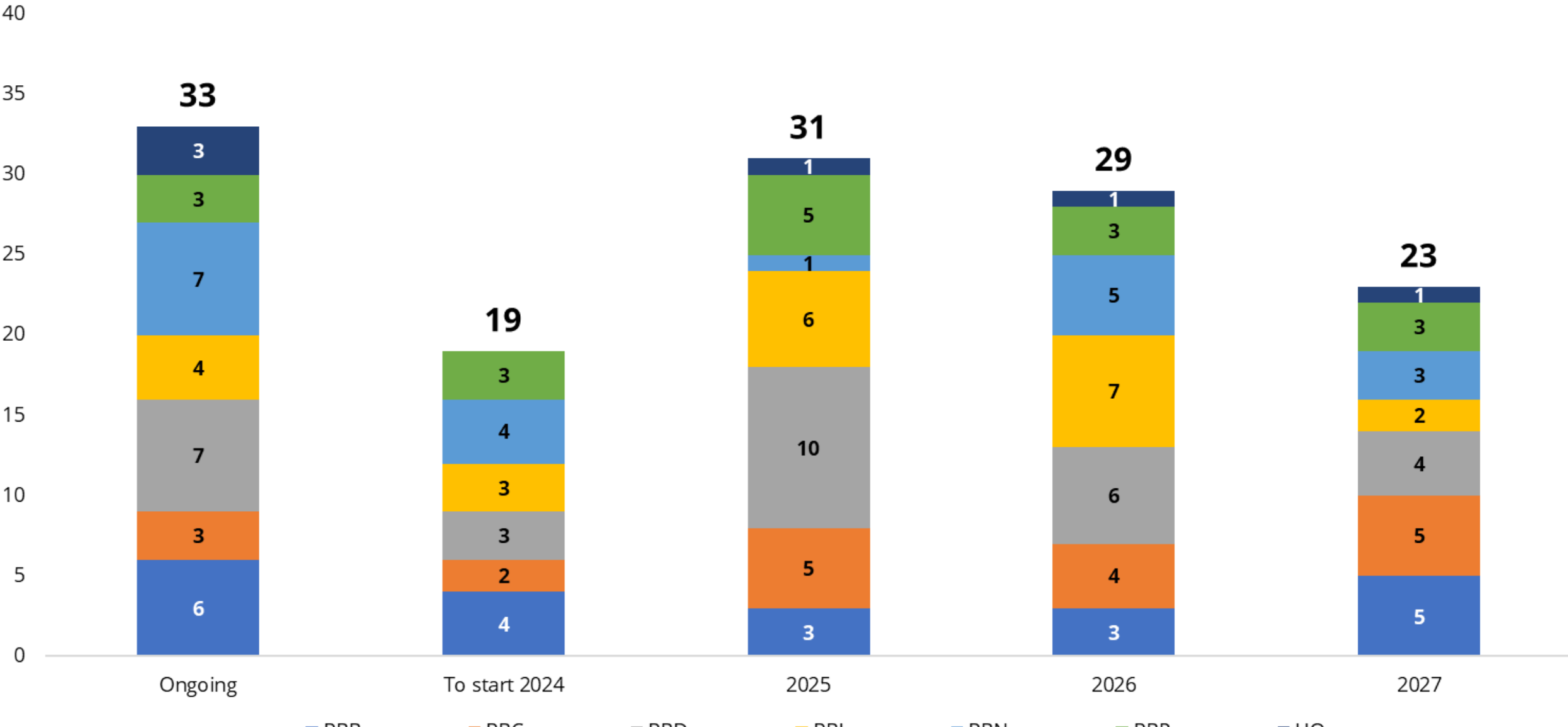
# Impact evaluations (2024-2026)

	2024		2025	2026
<b>Cash-based Transfers and Gender Window</b>	<p><b>Continued from 2023:</b></p> <ol style="list-style-type: none"> <li>Lebanon (Humanitarian Targeting)</li> <li>Peru (Humanitarian CBT)</li> </ol> <p><u>Finishing in 2024:</u></p> <ol style="list-style-type: none"> <li>DRC (Humanitarian Targeting)</li> <li>Haiti</li> <li>Kenya</li> <li>Rwanda (CBT &amp; Climate and Resilience)</li> </ol>	<p><b>Under feasibility/ potential new IE:</b></p> <ol style="list-style-type: none"> <li><i>Afghanistan</i> (Humanitarian CBT)</li> <li><i>Bangladesh</i> (Humanitarian CBT)</li> <li><i>Ghana 2.0</i> (USAID)</li> </ol>	<p><b>Continued from 2024:</b></p> <ol style="list-style-type: none"> <li>Peru (Humanitarian)</li> <li>Lebanon (Humanitarian Targeting)</li> </ol> <p><u>Potential new continuations:</u></p> <ol style="list-style-type: none"> <li><i>Afghanistan</i> (Humanitarian CBT)</li> <li><i>Bangladesh</i> (Humanitarian CBT)</li> <li><i>Ghana 2.0</i> (USAID)</li> </ol> <p><b>new IEs start in 2025</b></p>	<b>IEs continued from 2025 new IEs start in 2026</b>
<b>Climate and Resilience Window</b>	<p><b>Continued from 2023:</b></p> <ol style="list-style-type: none"> <li>Philippines (Anticipatory Action)</li> </ol> <p><u>Finishing in 2024:</u></p> <ol style="list-style-type: none"> <li>Ghana 1.0 (USAID)</li> <li>Mali (BMZ)</li> <li>Nepal (Anticipatory Action)</li> <li>Niger (BMZ)</li> <li>South Sudan (BMZ joint with UNICEF)</li> </ol>	<p><b>Under feasibility/ potential new IE:</b></p> <ol style="list-style-type: none"> <li><i>Bangladesh</i> (Anticipatory Action)</li> <li><i>DRC</i> (BMZ joint with FAO and UNICEF)</li> <li><i>Ghana</i> (CLTF)</li> <li><i>Mozambique</i> (Anticipatory Action)</li> </ol>	<p><b>Continued from 2024:</b></p> <ol style="list-style-type: none"> <li>Philippines (Anticipatory Action)</li> </ol> <p><u>Potential new continuations:</u></p> <ol style="list-style-type: none"> <li><i>Bangladesh</i> (Anticipatory Action)</li> <li><i>DRC</i> (BMZ joint with FAO and UNICEF)</li> <li><i>Ghana</i> (CLTF)</li> <li><i>Mozambique</i> (Anticipatory Action)</li> </ol> <p><b>new IEs start in 2025</b></p>	<b>IEs continued from 2025 new IEs start in 2026</b>
<b>School-based Programmes Window</b>	<p><b>Continued from 2023:</b></p> <ol style="list-style-type: none"> <li>Burundi</li> <li>Malawi (Norad)</li> </ol> <p><u>Finishing in 2024:</u></p> <ol style="list-style-type: none"> <li>Guatemala (pilot)</li> <li>Jordan</li> <li>The Gambia</li> </ol>	<p><b>Under feasibility/ potential new IE:</b></p> <ol style="list-style-type: none"> <li><i>Madagascar</i></li> <li><i>Zambia</i></li> <li><i>Kyrgyzstan</i> (KOICA)</li> <li><i>Mozambique</i></li> <li><i>The Gambia</i></li> </ol>	<p><b>Continued from 2024:</b></p> <ol style="list-style-type: none"> <li>Burundi</li> <li>Malawi (Norad)</li> </ol> <p><u>Potential new continuations:</u></p> <ol style="list-style-type: none"> <li><i>Madagascar</i></li> <li><i>Zambia</i></li> <li><i>Kyrgyzstan</i></li> <li><i>Mozambique</i></li> <li><i>The Gambia</i></li> </ol> <p><b>new IEs start in 2025</b></p>	<b>IEs continued from 2025 new IEs start in 2026</b>
<b>Non-window</b>	<p><b>Continued from 2023:</b></p> <ol style="list-style-type: none"> <li>Sudan (social cohesion pilot)</li> </ol>	<p><b>Under feasibility/ potential new IE:</b></p> <ol style="list-style-type: none"> <li><i>Nepal</i> (nutrition)</li> </ol>	<p><b>Continued from 2024:</b></p> <ol style="list-style-type: none"> <li>Sudan (social cohesion pilot)</li> </ol> <p><u>Potential new continuations:</u></p> <ol style="list-style-type: none"> <li><i>Nepal</i> Nutrition</li> </ol>	<b>Continued from 2025:</b>

# Programme of work for decentralized evaluations

# Decentralized evaluations

Ongoing and planned decentralized evaluations by Start Year and by Region/HQ

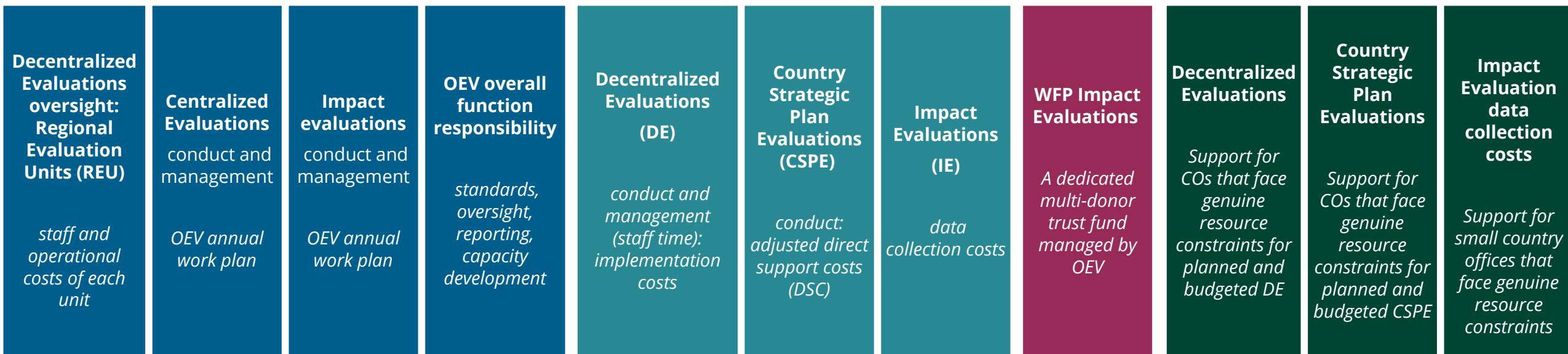


**Questions on programme of work?**

# Financial resource requirements



# Funding model for WFP's evaluation function



# OEV PSA MP submission 2025

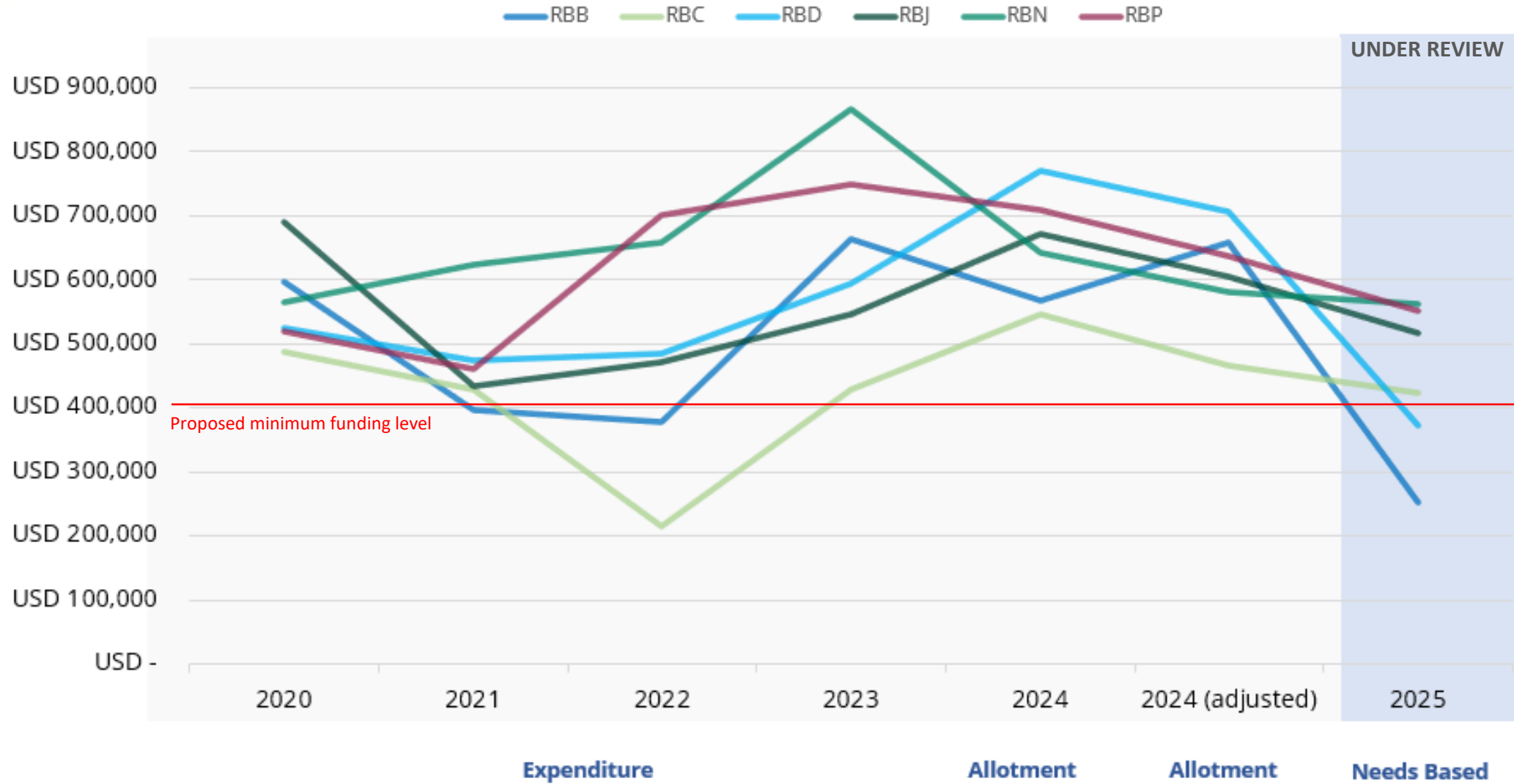
## (Comparison with previous year MP approved allotments)

	MP Approved 2020*	MP Approved 2023	MP Approved 2024	Needs Based Requirements 2025**	Difference	% Change 2024 vs 2025
PSA	\$ 12.2	\$ 15.9	\$ 15.3	\$ 13.8	\$ (1.5)	-10%
PSA Priority 2				\$ 0.5		-6.7%
Other cost	\$ 5.2	\$ 7.4	\$ 6.1	\$ 4.3	\$ (1.7)	-28%
Staff Cost	\$ 7.0	\$ 8.5	\$ 9.3	\$ 9.5	\$ 0.2	+2%
Full Time Equivalent (FTE)	52.5	54	61	57.3	(4)	

\*Total income contributions 8.4 bn

\*\*10% decrease on 2024 Tagetik ceiling for OEV PSA (April 2024)

# Evolution of regional evaluation budgets 2020-2025



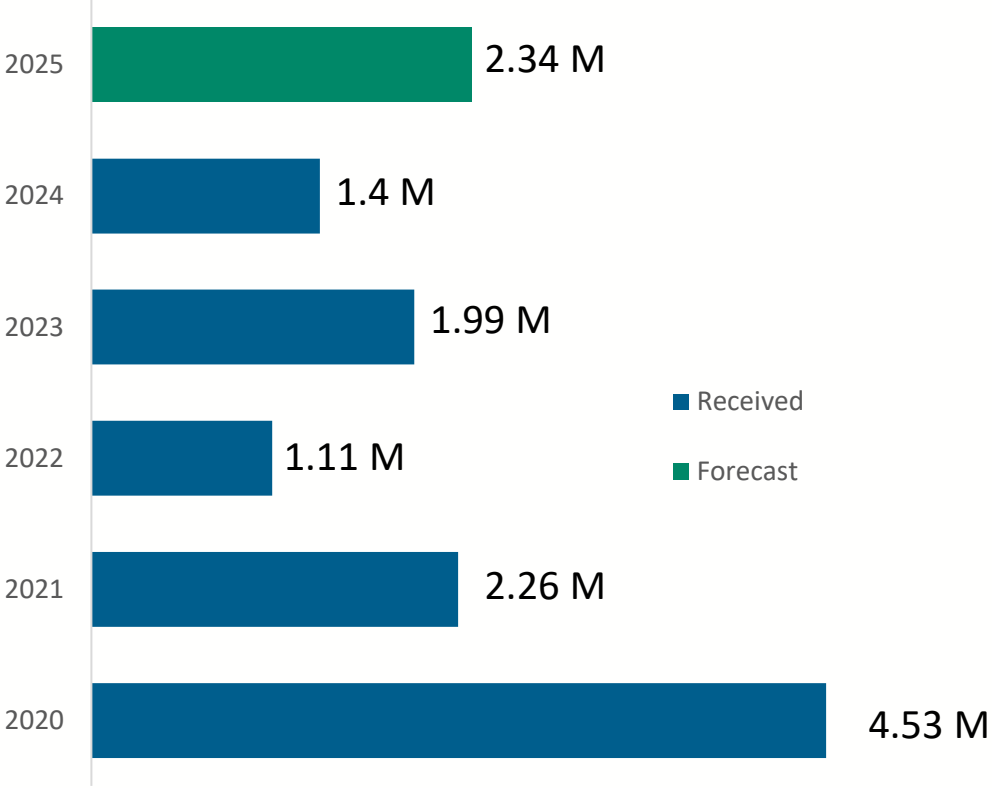
2024 shows approved allocations to RBs per original MP (November 2023) and adjusted allocations per updated MP (Q1 2024).  
 2025 shows resources requested and is indicative (draft submissions, still undergoing quality control)

# Evolution of regional evaluation budgets 2020-2025

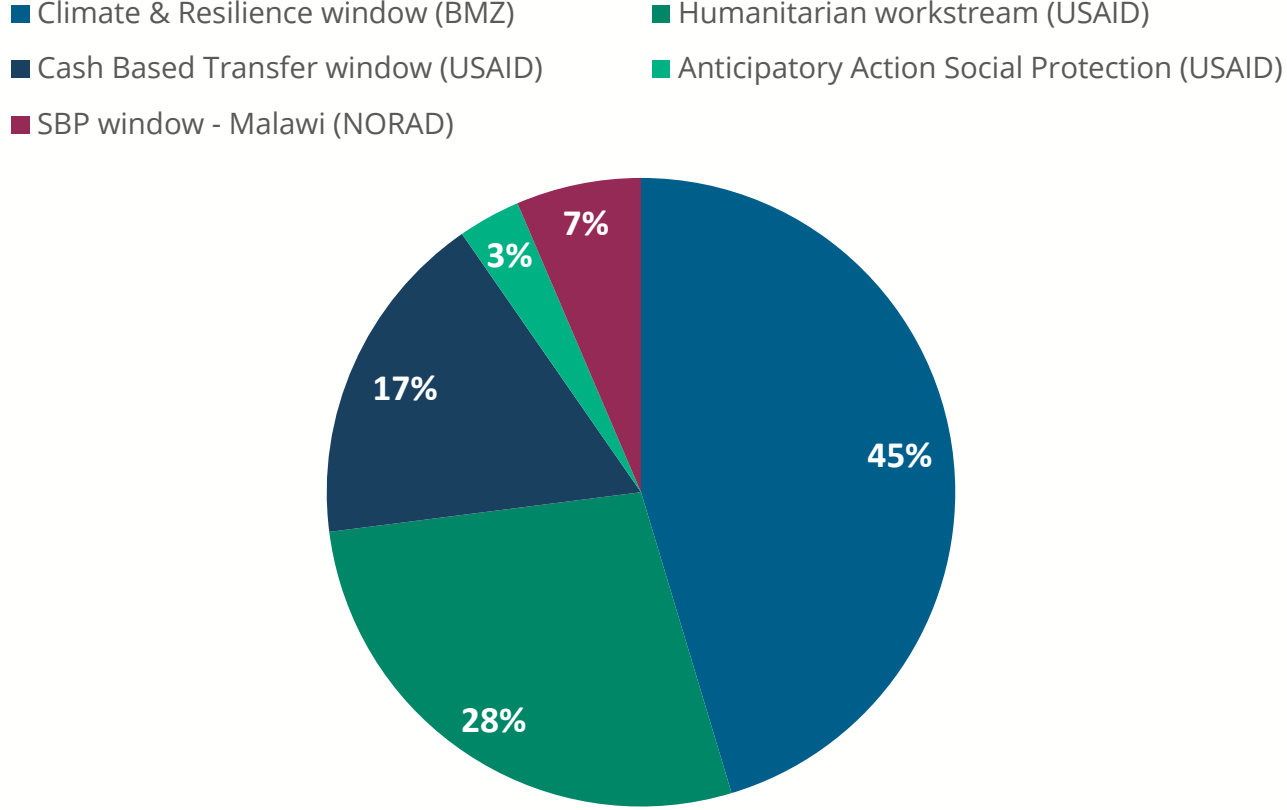
	MP Approved	MP Approved	Needs-Based Requirements	% Change 2020-25	% Change 2024-25
	2020	2024	2025		
<b>TOTAL</b>	\$ 3,379,355	\$ 3,905,728	\$ 2,676,592	-20%	<b>-31.5%</b>
RBB	\$ 596,555	\$ 568,248	\$ 252,430	-58%	<b>-55.5%</b>
RBC	\$ 486,839	\$ 546,104	\$ 421,650	-13%	-13%
RBD	\$ 525,222	\$ 768,520	\$ 373,460	-46%	<b>-51%</b>
RBJ	\$ 688,997	\$ 671,672	\$ 516,635	-25%	-23%
RBN	\$ 563,434	\$ 642,574	\$ 562,370	-0.2%	-12%
RBP	\$ 518,308	\$ 708,610	\$ 550,047	-6%	-22%

2025 – UNDER REVIEW

# Multi-donor/year trust fund resources for impact evaluation



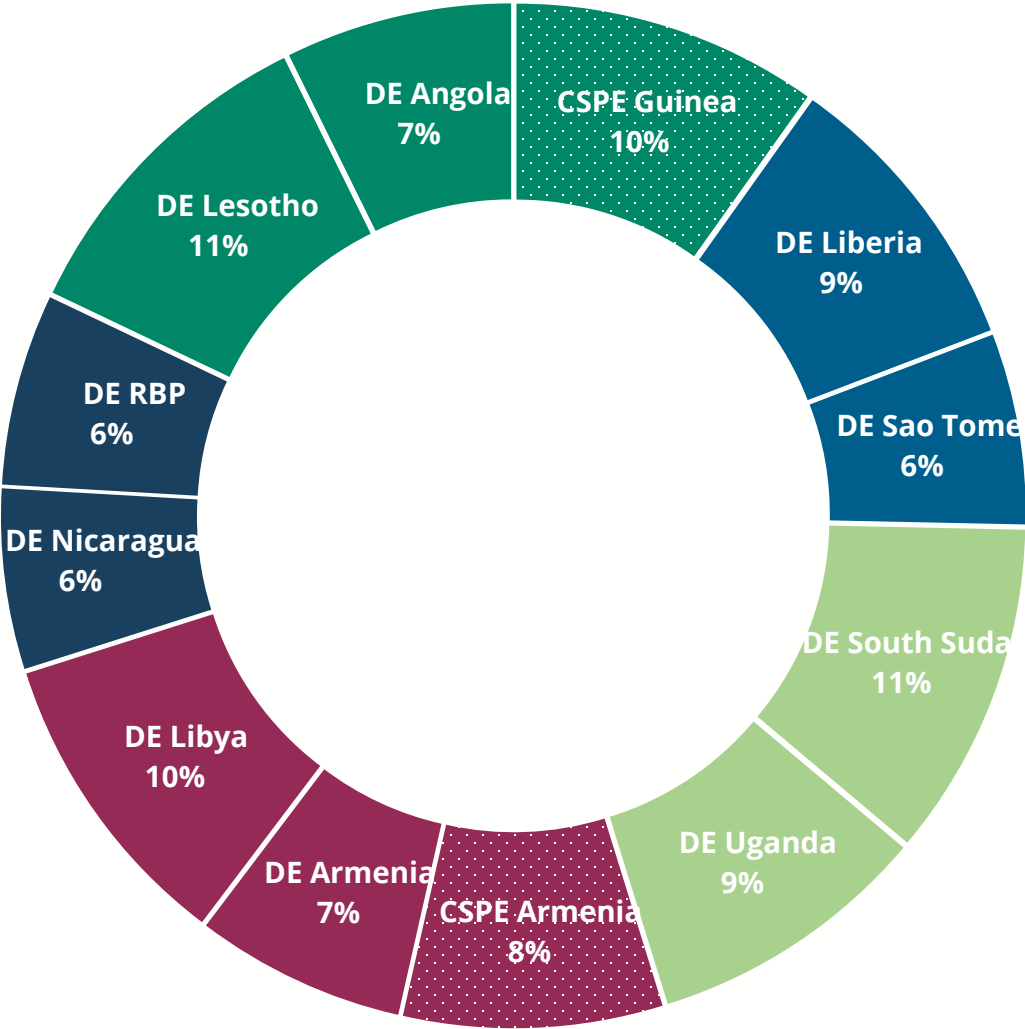
Total contributions by year 2020-2025



Total funds allocated 2020-2025 by donor and activity

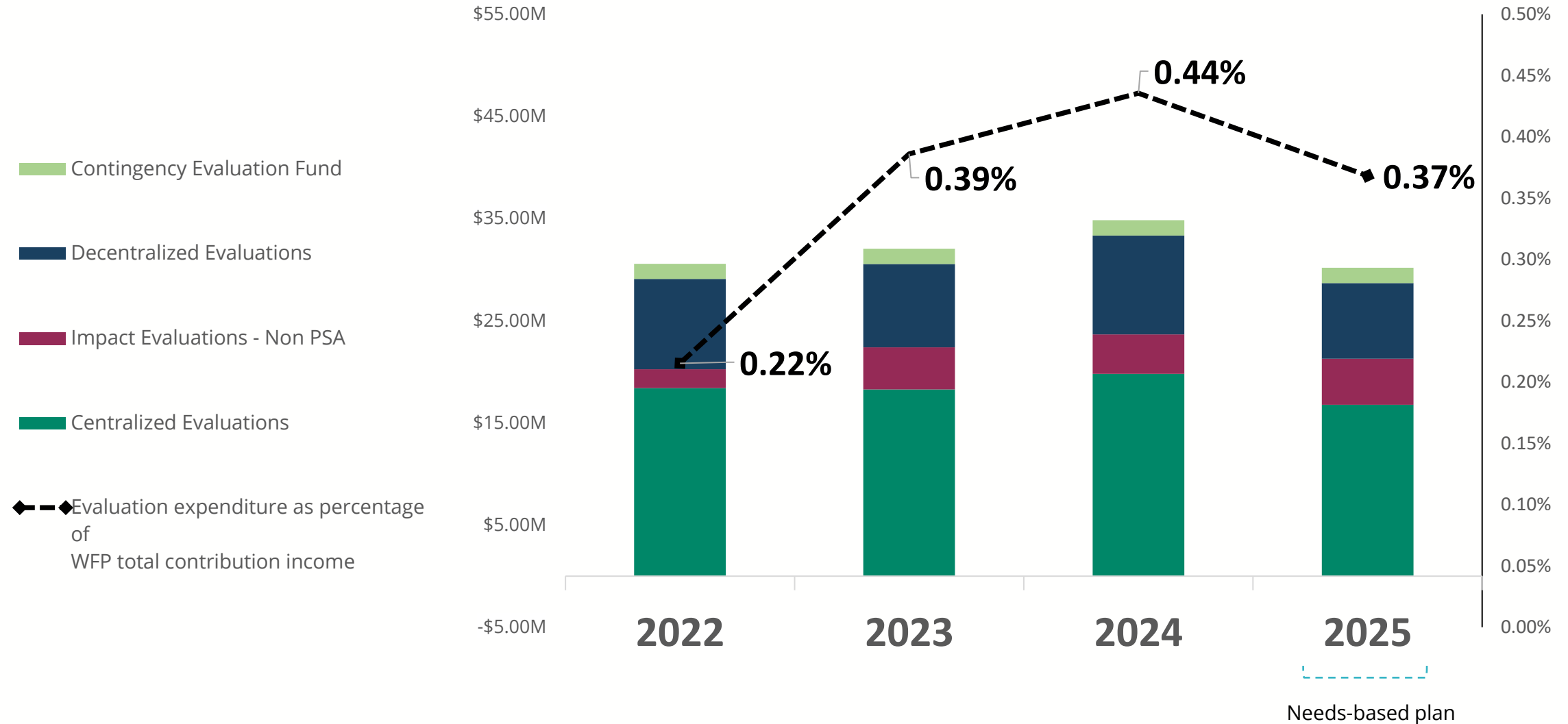
# Contingency evaluation fund (CEF) allocations 2023

Total: USD 960,496  
CSPE : USD 174,508 DE : USD 785,988



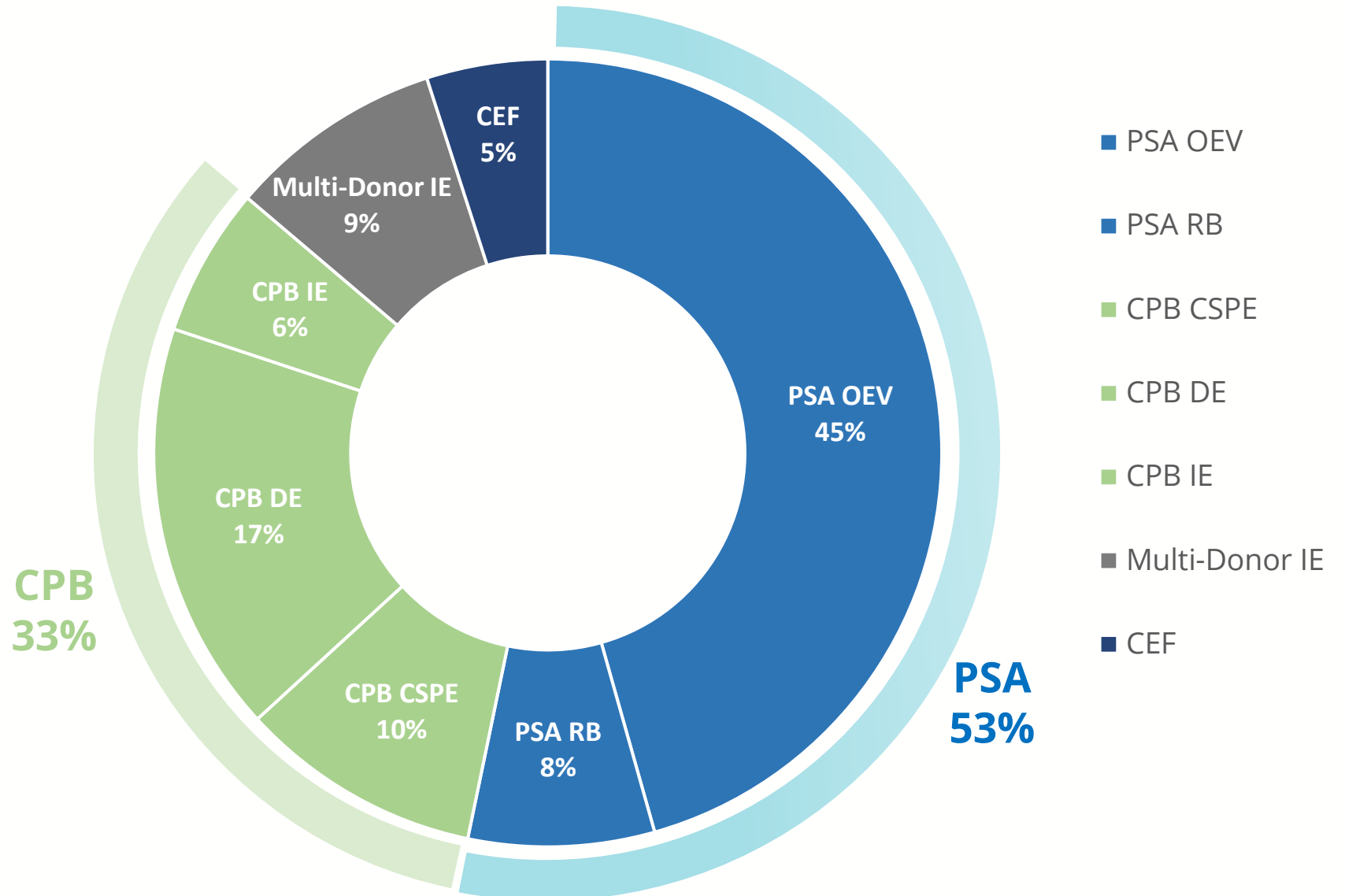
# Resources allocated to evaluation 2022-2025

Resources allocated to evaluation as percentage of WFP total contribution income, 2022-2025



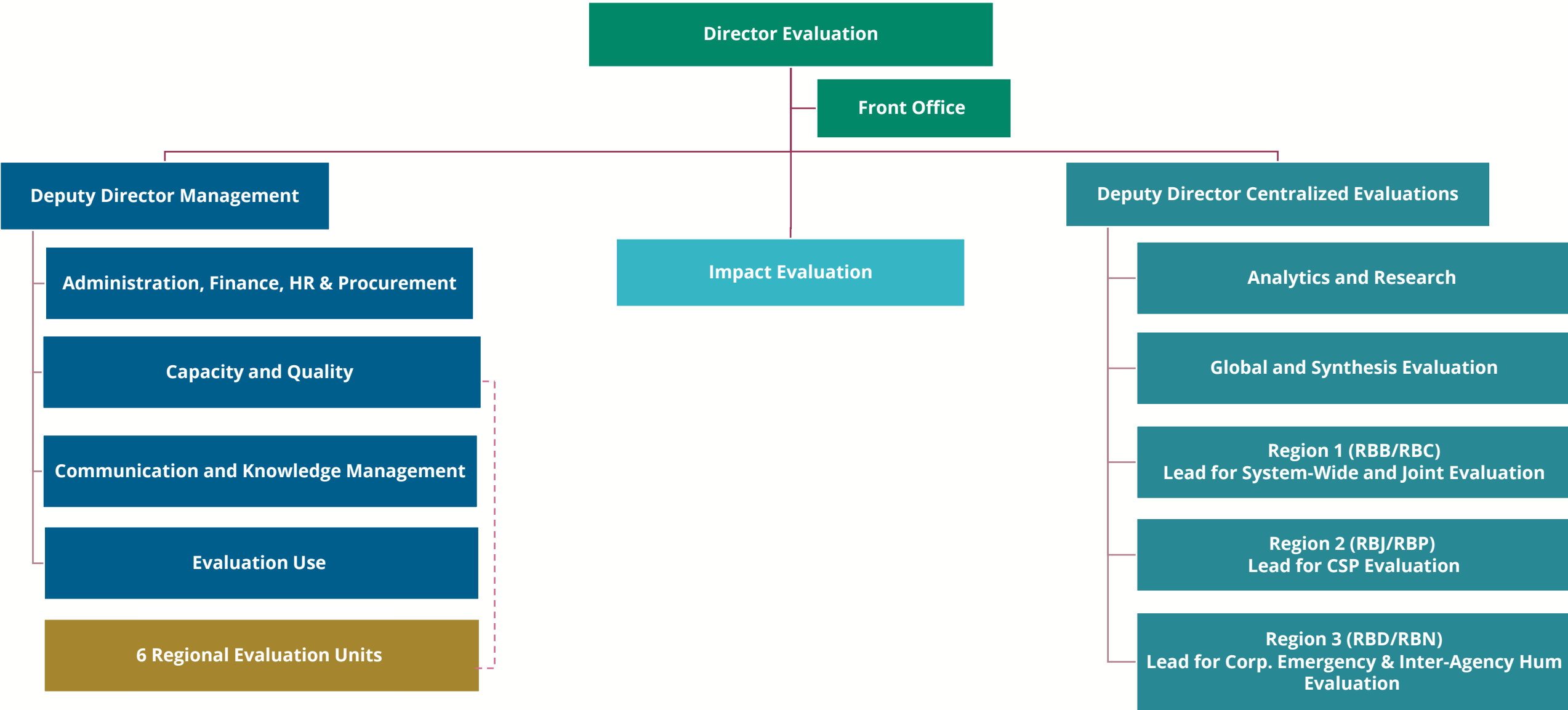


# Overall projected funding sources for WFP's evaluation function 2025



# Human resource requirements

# Evaluation function – Global HQ May 2024



**Questions on resource requirements?**