



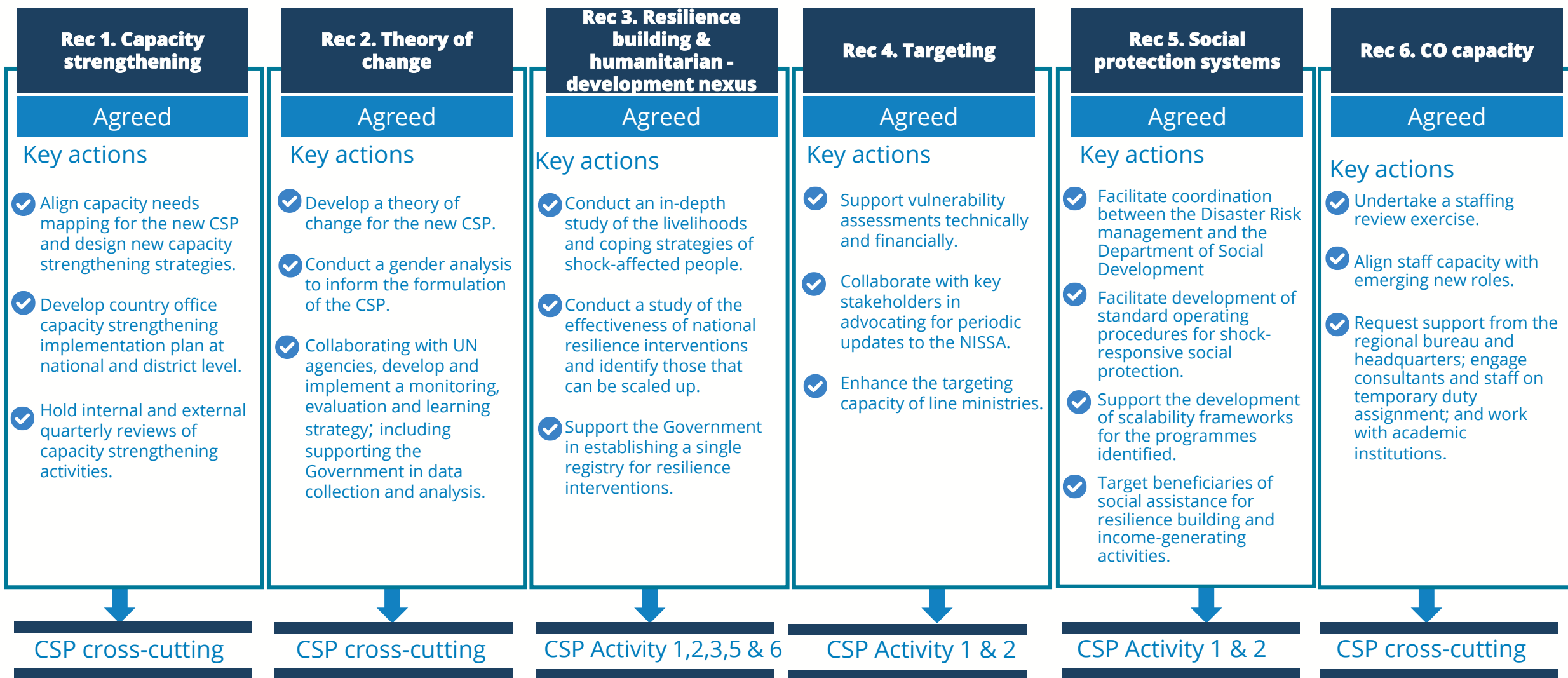
WFP Lesotho 2G CSP 2024 - 2029

Executive Board Informal Consultation

March 2024

Evaluation & Learning: Use of CSPE evidence in CSP design

Management Response to the CSP Evaluation of Lesotho Country Office



Context analysis



HIGH LEVELS OF POVERTY

50% of people live in poverty, coupled with high malnutrition rates (**34%** stunting)



HIGH FOOD INSECURITY

24% of the population is chronically food insecure



POLITICAL INSTABILITY

Frequent dissolution of the government since 2012 amplify humanitarian and development challenges



LANDLOCKED COUNTRY

The landlocked nature of the country magnifies its vulnerability, as it relies heavily on external trade routes



SUBSISTENCE AGRICULTURE

70% of the rural population engages in subsistence rain-fed agriculture and **90%** of the national food supply is imported



HIGH ENVIRONMENTAL DEGRADATION

24% of the land is degraded and only **10%** of the land is arable



HIGH UNEMPLOYMENT RATE

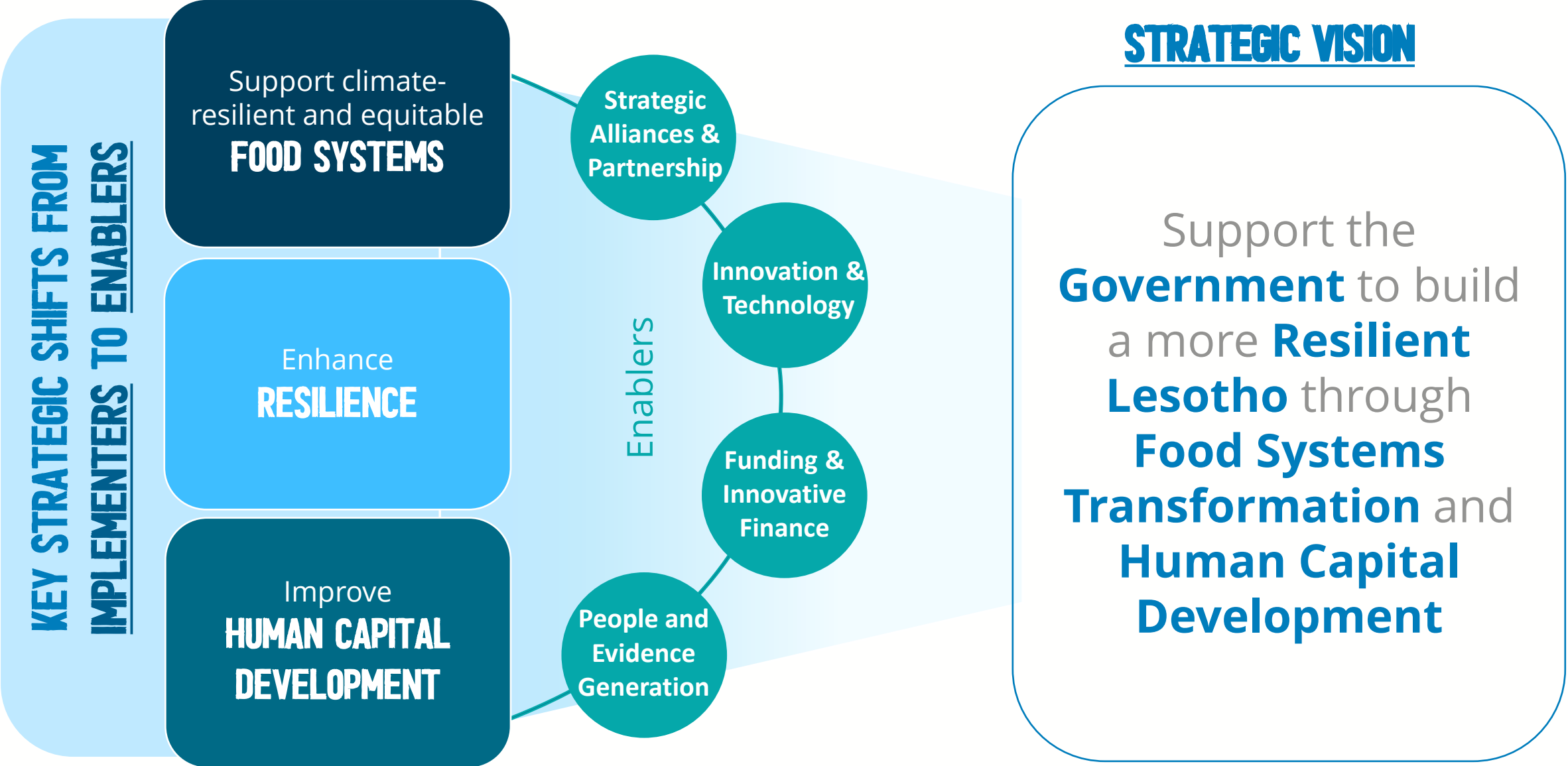
22.5% unemployment rate, highest among youth, standing at **33%**



GENDER INEQUALITY

Women earn **37%** less than men, one of the highest gaps in the world

Drivers for 2G CSP strategic/programmatic shifts



NATIONAL PRIORITIES

- National Development Plan
- National Strategy/policy for:
 - Disaster risk management
 - Climate change & early warning
 - Resilience & social protection
 - School feeding & nutrition
 - Gender protection

UNSDCF PRIORITIES

- Strategic Pillar 1: Good Governance and social equity
- Strategic Pillar 2: Equitable food systems, environmental sustainability, and climate resilience
- Strategic Pillar 3: People's wellbeing and economic development

Strategic Outcome

1

Food-insecure and crisis-affected people in Lesotho are able to meet their essential needs before, during, and after crises, including through anticipatory actions and shock-responsive national social protection programmes.

Strategic Outcome

2

By 2029, national systems and programmes for nutrition security and school-based programming in Lesotho are strengthened.

Strategic Outcome

3

By 2029, populations at risk in Lesotho benefit from strengthened, climate-resilient food systems and sustainable livelihoods.

Strategic Outcome

4

The Government, development partners, civil society and private sector organizations in Lesotho have improved access to innovative, effective and cost-efficient on-demand WFP services by 2029.

THANK YOU!

