



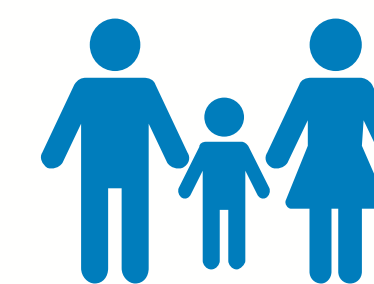
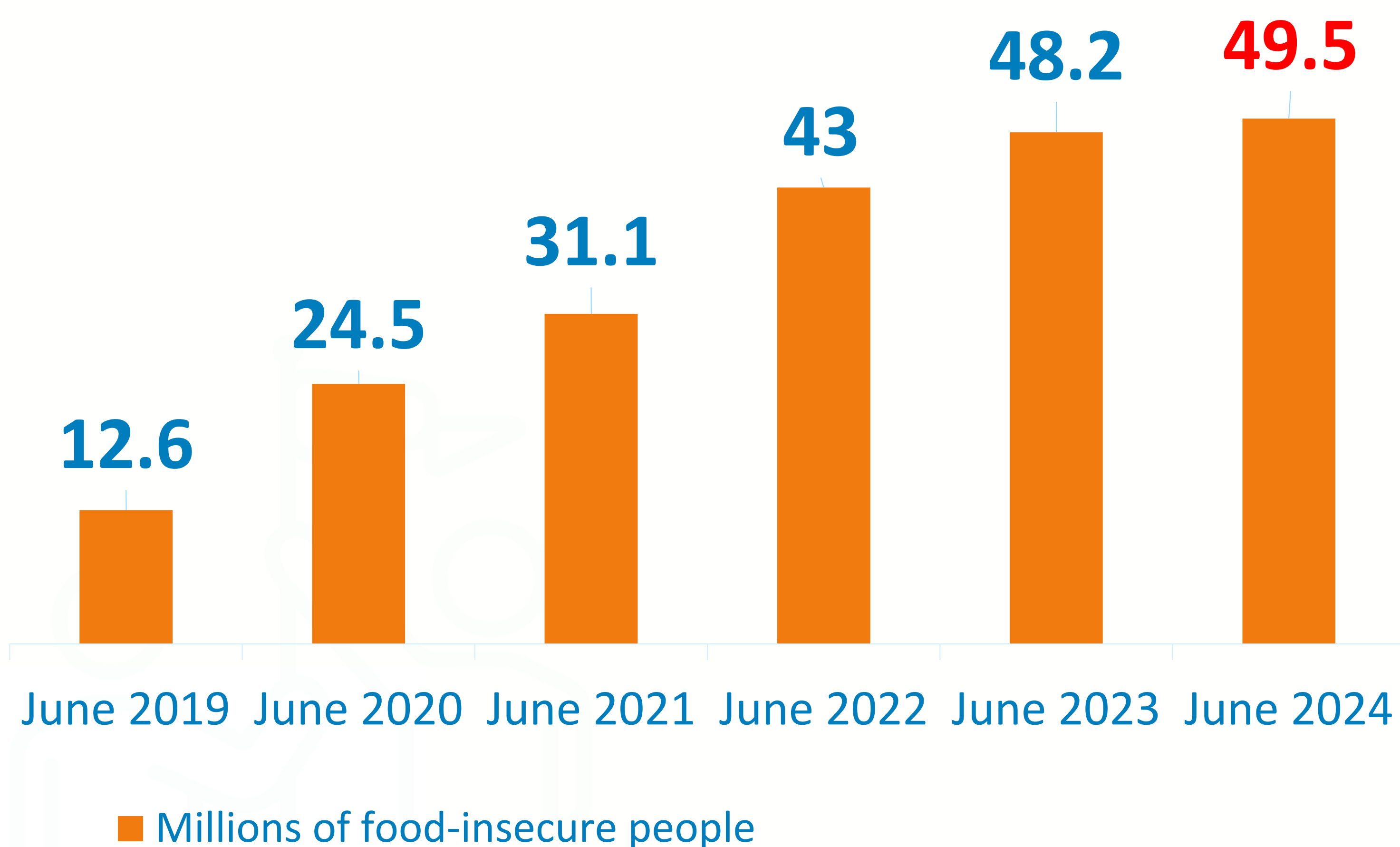
**WFP**

**World Food Programme  
Programme Alimentaire Mondial  
Programa Mundial de Alimentos  
برنامج الأغذية العالمي**

**Executive Board**

**26 – 28 February 2024**

# ESCALATING NEEDS AND FASTEST GROWING DISPLACEMENT



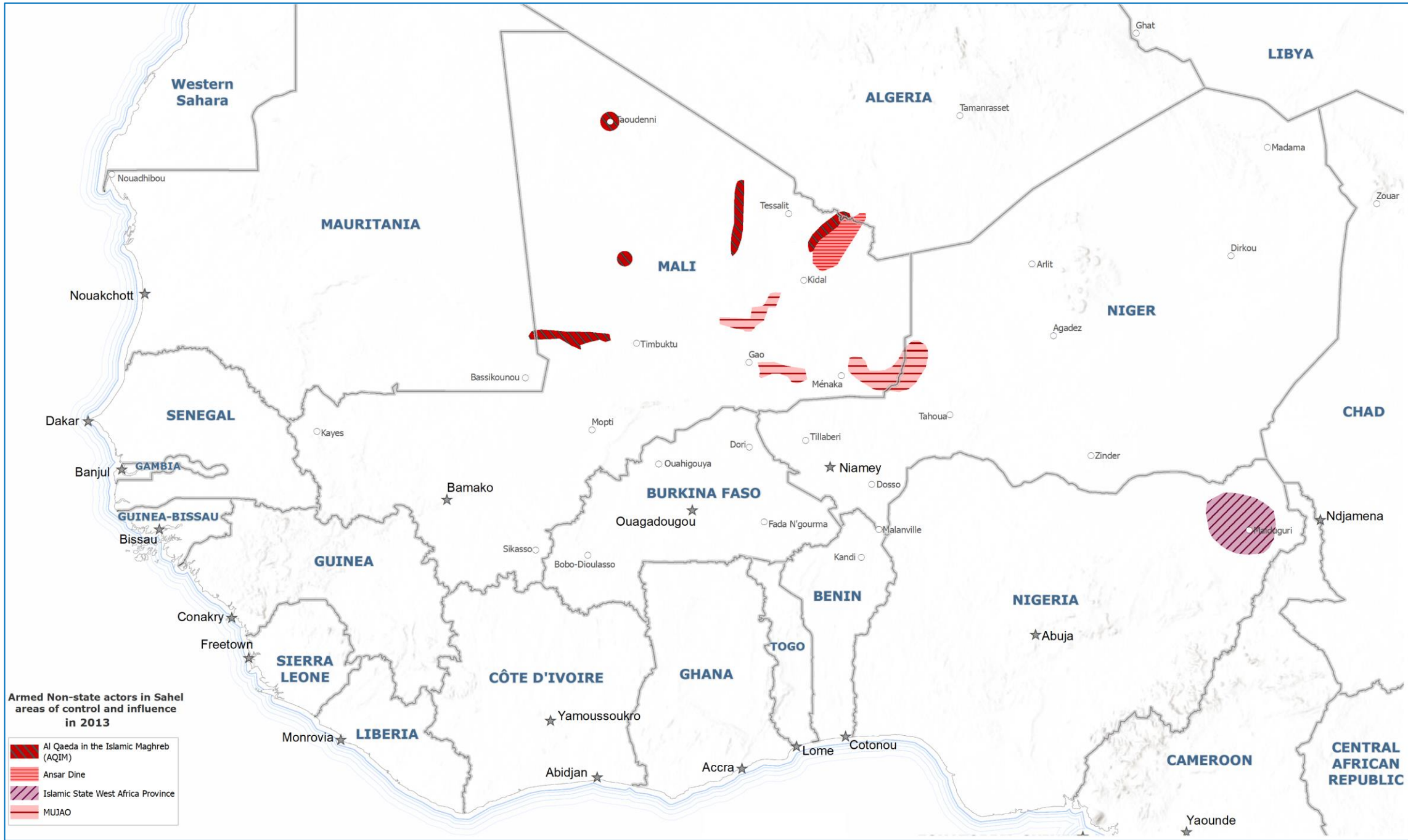
**17 million malnourished children**



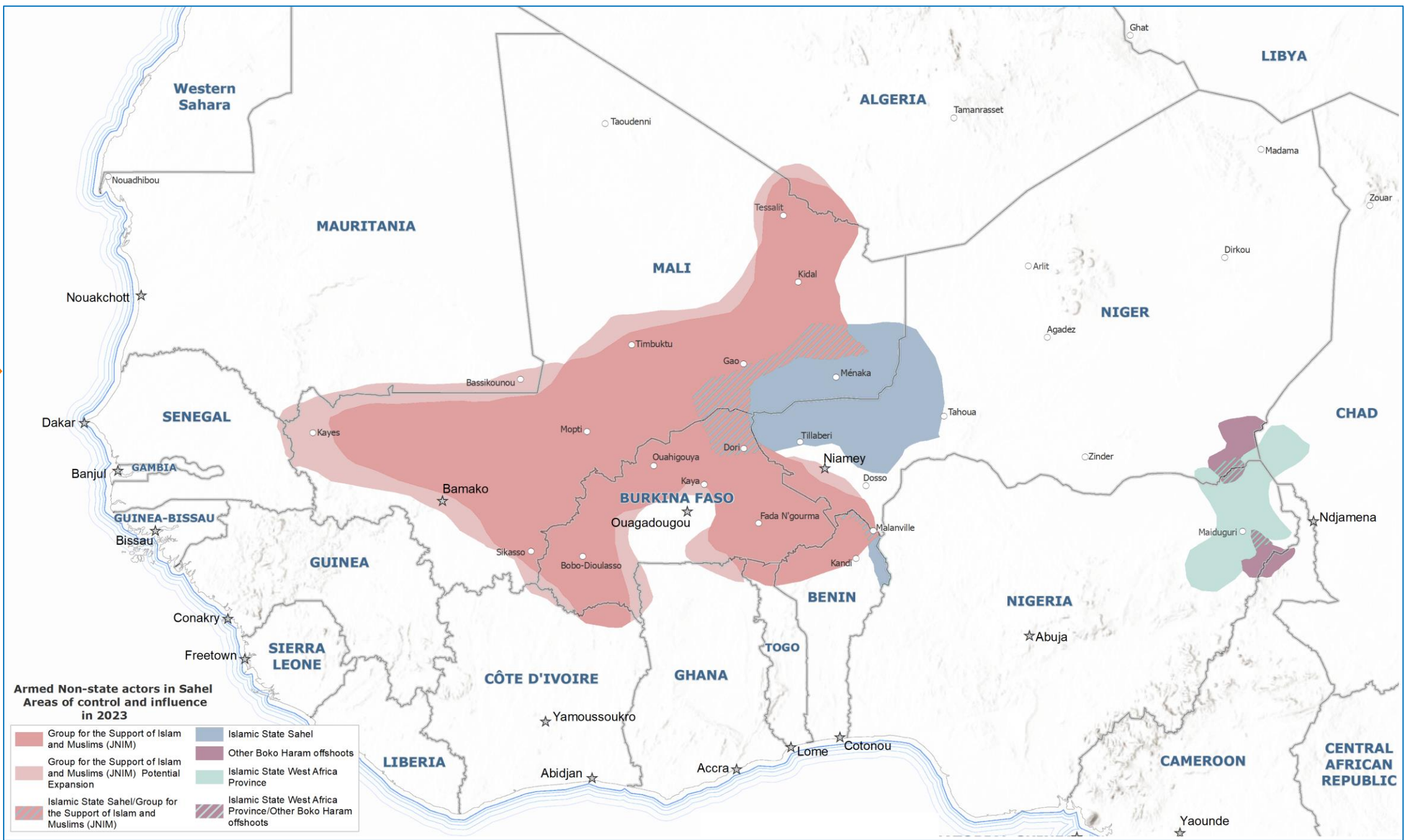
**10.5 million forcibly displaced people**

# EXPANSION OF PRESENCE OF NON-STATE ARMED GROUPS IN THE SAHEL SINCE 2013

2013

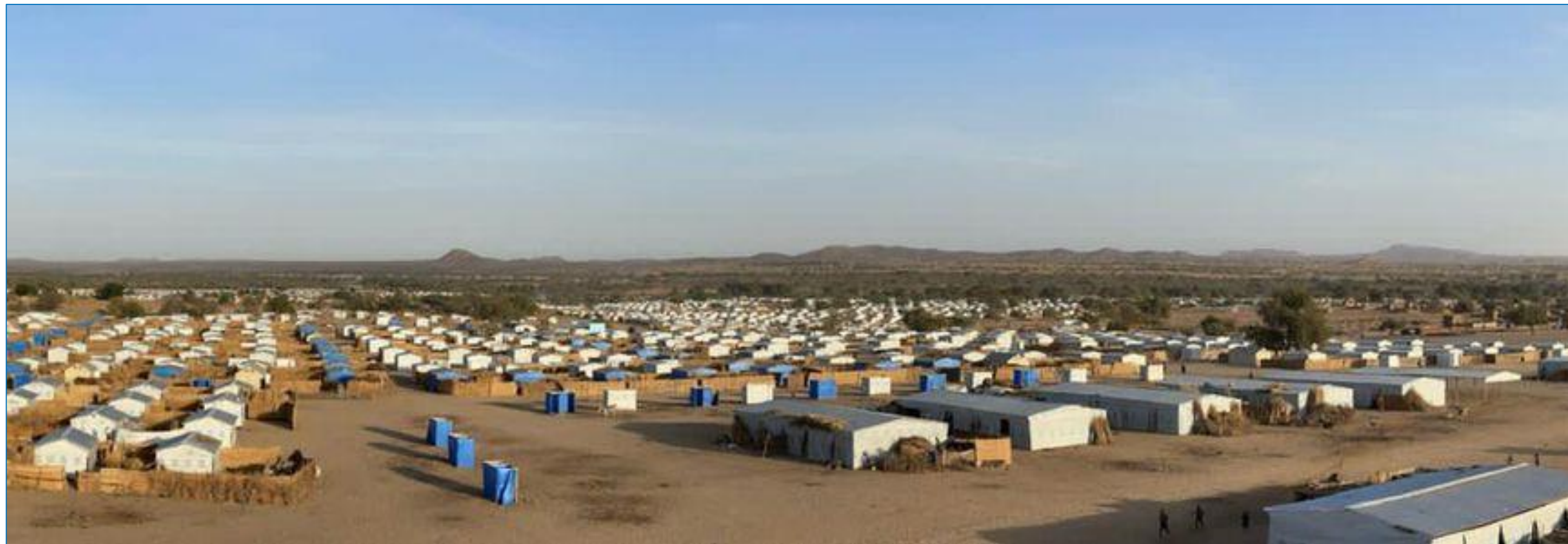


2023



# COMPLEX HUMANITARIAN ACCESS BUT WFP TEAMS ARE STAYING AND DELIVERING WHERE NO ONE ELSE CAN

## Cross-border corridors in Chad



## Airlift operations in Burkina Faso



# **WFP TEAMS ARE ALSO INCREASING LEVELS OF ASSURANCE TO ENSURE EVERY DOLLAR REACHES THE RIGHT PEOPLE**

- 1. Complaints and feedback mechanism**
- 2. Risk-based monitoring**
- 3. Commodity management**
- 4. Digitalization of in-kind distributions**

**Additional USD 28 million investment is required**

# FUNDING IS NOT MEETING THE NEEDS OF THE MOST PRIORITIZED POPULATIONS, THREATENING STARVATION

**Prioritization of the most in need**



**People to be cut out of assistance imminently**

**In Chad, Nigeria, Mauritania, Burkina Faso, Cameroon and Mali**

# WFP IS ROLLING OUT TRANSFORMATIVE SOLUTIONS TO BUILD RESILIENCE AND REDUCE HUMANITARIAN NEEDS

**SOCIAL PROTECTION  
SYSTEMS**

**HOME-GROWN  
SCHOOL FEEDING**



**CLIMATE  
RESILIENT FOOD  
SYSTEMS**

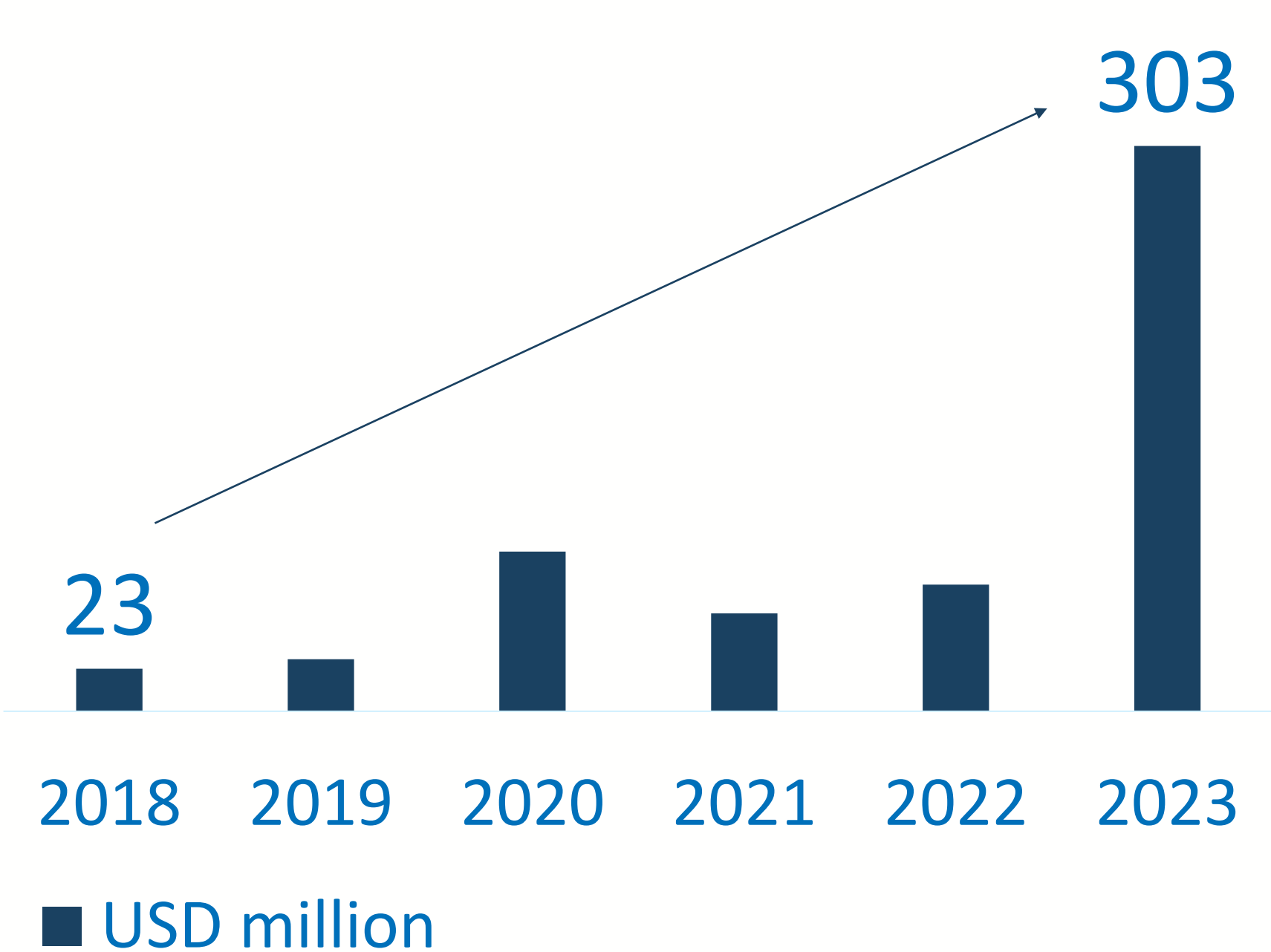


**DURABLE  
SOLUTIONS FOR  
REFUGEES**



# WFP CONTINUES TO SUPPORT GOVERNMENTS MOBILIZING RESOURCES WHILE DIVERSIFYING THE FUNDING BASE

## Financial support from countries in the region



## Partnership approach

### IFIs / Thematic Funds



### Private sector for *innovative financing*