



RBJ



World Food Programme

SAVING LIVES
CHANGING LIVES

LRFPF EB PRESENTATION

June 2023

RBJ LRFPP IMPLEMENTATION TIMELINE



June 2020 initial concept on forward contracting



August 2020 – Pilot engagement with COs

- Mozambique
- Tanzania
- Zambia
- Zimbabwe

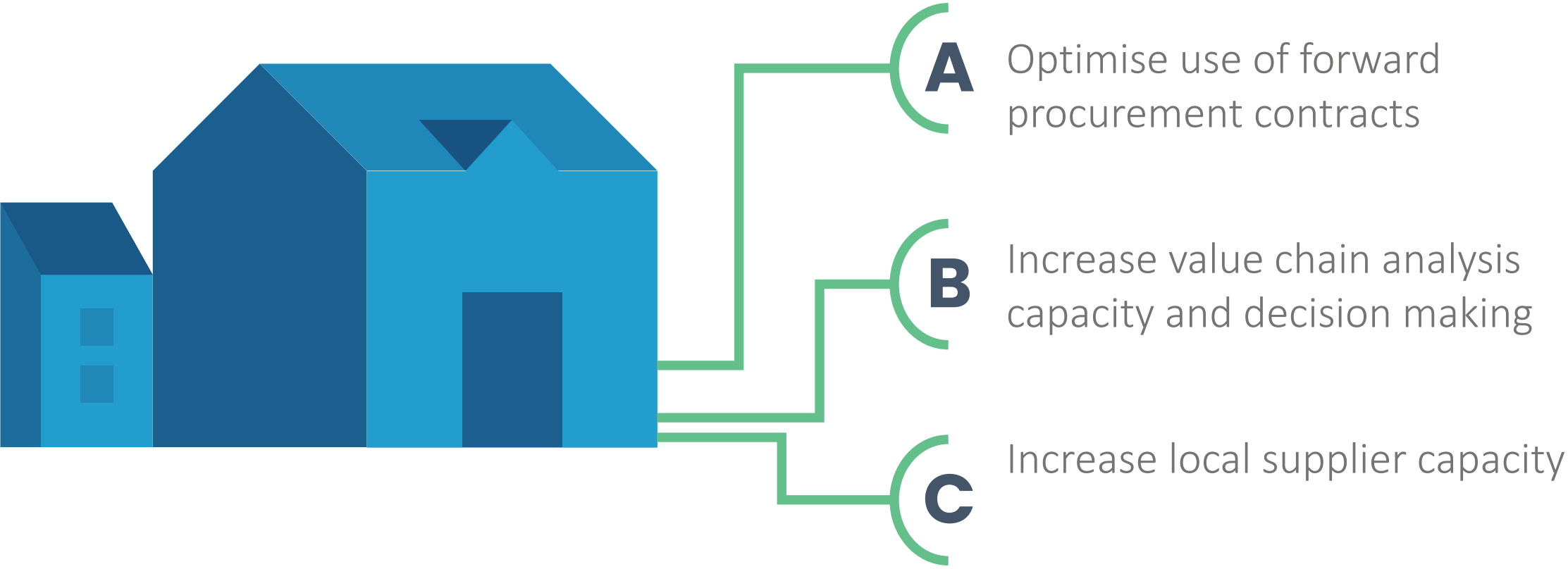


May 2021 first purchases under forward contracting



Jan 2022 - June value chain development approach initiated

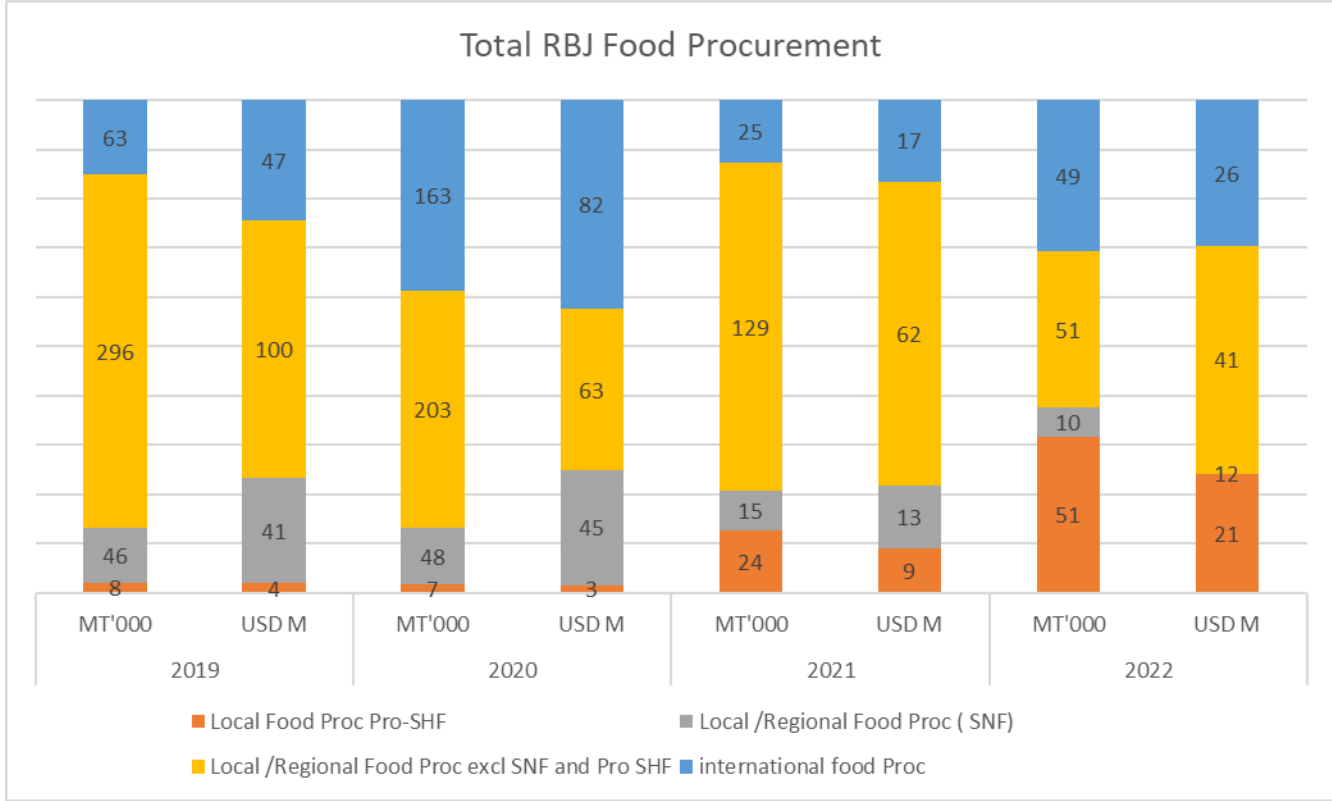
RBJ LRFPP APPROACH



ACHIEVEMENTS UNDER LRFPP

ACHIEVEMENTS

- 14 VCA's conducted in the region
- 28 Staff across all COs in supply chain and programme undergone certification in value chain development.
- Use of forward contracting models for smallholder farmers shows increases in extension of land usage, use of improved inputs, sales, increase in non-food expenditures, access to loans, and savings services.



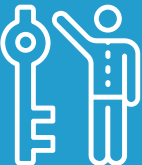
BUILDING REGIONAL SUPPLY THROUGH VALUE CHAINS & SUPPLIER DEVELOPMENT

Focus

- Prioritize onboarding of additional nutritious food suppliers in the region to mitigate discrepancy between the demand and the supply of the specialized nutritious foods (SNF).
- Support certification systems for increased traceability and supplier inclusion
- Position WFP a partner of choice for both public and private entities interested in the development of better integrated, more efficient markets and stronger and fairer links from smallholders to markets.



PRINCIPAL CHALLENGES IN IMPLEMENTATION



**RESOURCES
& FUNDING**



**REGIONAL
PORTFOLIO**



**DELIVERY
ISSUES &
QUALITY
CONTROL**

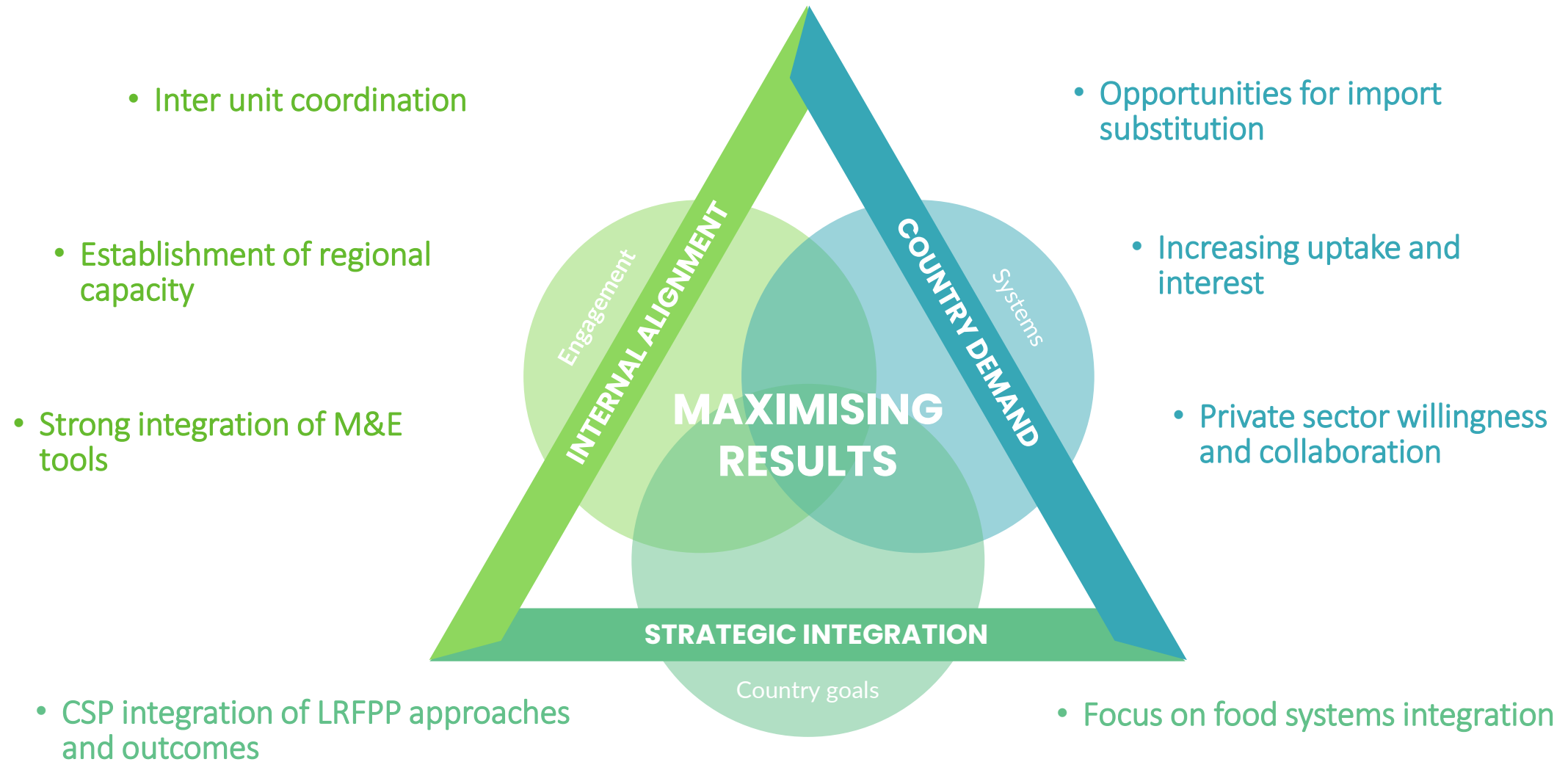


**PROMOTING
DEMAND &
UPTAKE**



TRACEABILITY

SUCCESS FACTORS & FUTURE OPPORTUNITY





World Food
Programme

SAVING
LIVES
CHANGING
LIVES

THANK YOU