



Guatemala: Partnerships for resilient food systems – PRO-Resilience Programme

Mr Vinicio Arreaga | Vice Minister for Food Security and Nutrition, Ministry of Agriculture Guatemala



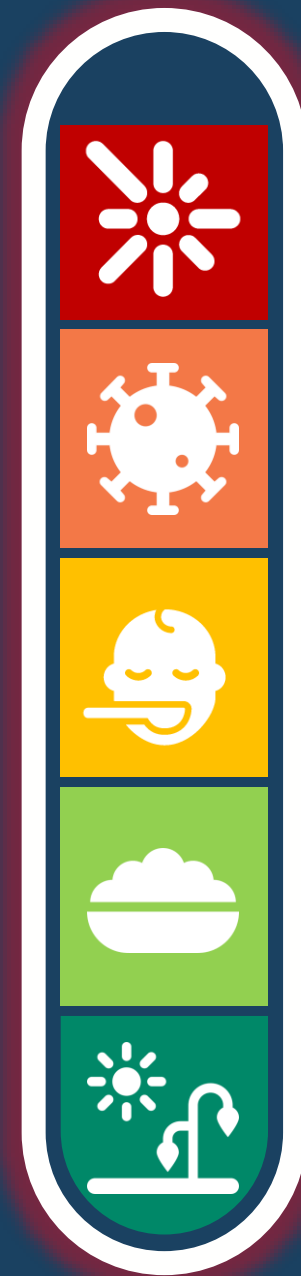
Programa
Mundial de
Alimentos

SALVAR
VIDAS
CAMBIAR
VIDAS

GUATEMALA SHOCK AND STRESSOR CONTEXT



Exacerbating
vulnerabilities



Global
Impacts
Ukraine
Conflict

COVID-19

Malnutrition

Food
insecurity

Climate shocks
and ecosystem
degradation



NUTRITION SENSITIVE & SPECIFIC, GENDER

SOCIAL & BEHAVIOUR CHANGE COMMUNICATION

VALUE CHAINS & SCHOOL FEEDING

CLIMATE CHANGE & RISK FINANCING

**EXPANDED RESILIENCE
PROGRAMME PORTFOLIO**

FOOD ASSISTANCE FOR ASSETS

SOIL CONSERVATION

CONDITIONAL CASH TRANSFERS

PRO-ACT
2017 - 2019



PRO-RESILIENCE
2020 - 2024



PRO-RESILIENCE: PARTNERSHIPS ACROSS THE PROGRAMME CYCLE

Coordination

National and local government

SESAN – Food security
MAGA – Agriculture
MARN – Environment
MINEDUC – Education
COMUSANES – Food security



Evidence generation

Working with academia and research institutions to support evidence-based decision making



Strategy

UN agencies support nutrition policy development and strategy to combat malnutrition



Geographic targeting and layering

Use of WFP's 3PA tool to bring partners together to analyse and agree on joint needs & priorities

Implementation

UN agencies, NGOs, private sector, civil society and communities



VALUE ADDITION OF A MULTI-PARTNER APPROACH

1. Expansion of programming to meet scale of the needs

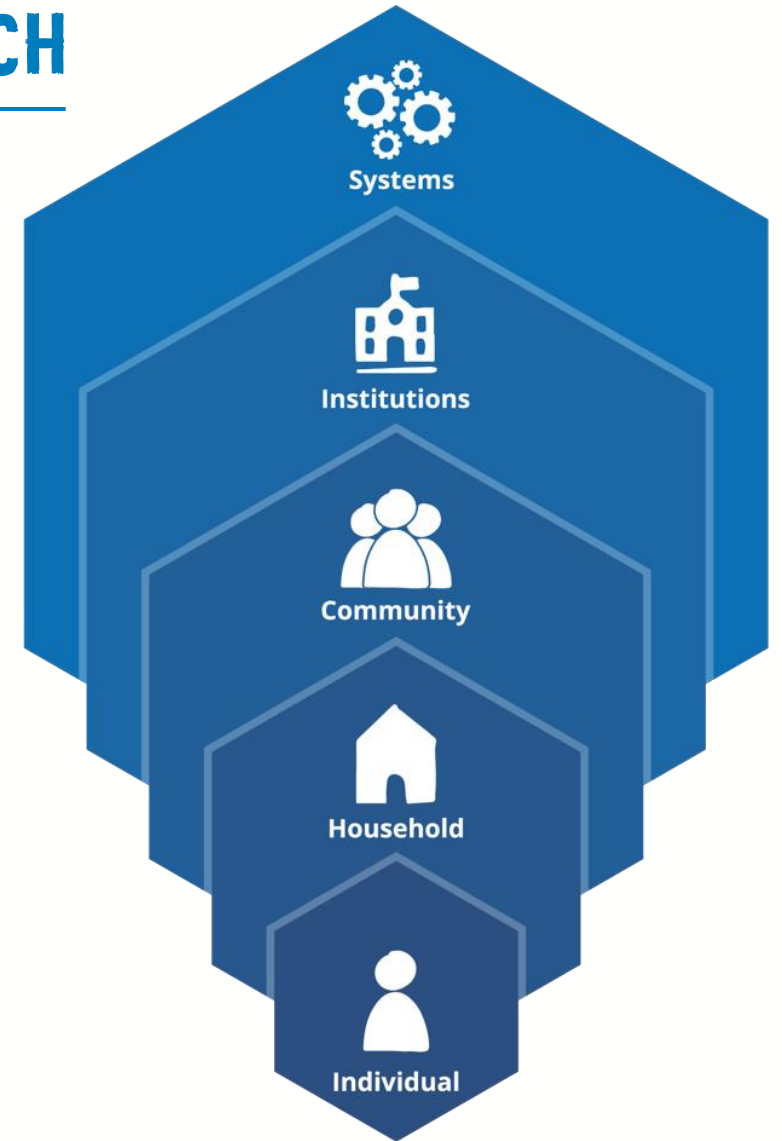
- Integrated resilience portfolio reaching over 95,000 beneficiaries in 7 departments and 22 municipalities.

2. Receiving sustained investment for multi-annual resilience projects

- EU, Canada, KOICA and recently the Howard G. Buffett Foundation

3. Achieving benefits at multiple levels

- Improved food security and income at the **individual and household level**
- Greater entrepreneurial opportunities and strengthened social cohesion at the **community level**
- Improved technical capacities in climate information and services of **local and national institutions and farmers**
- Strengthened nutrition and gender-sensitive policies at the **systems level**





Thank you
for your attention