




Social protection and WFP's dual role: Supporting millions of people while helping governments to support billions




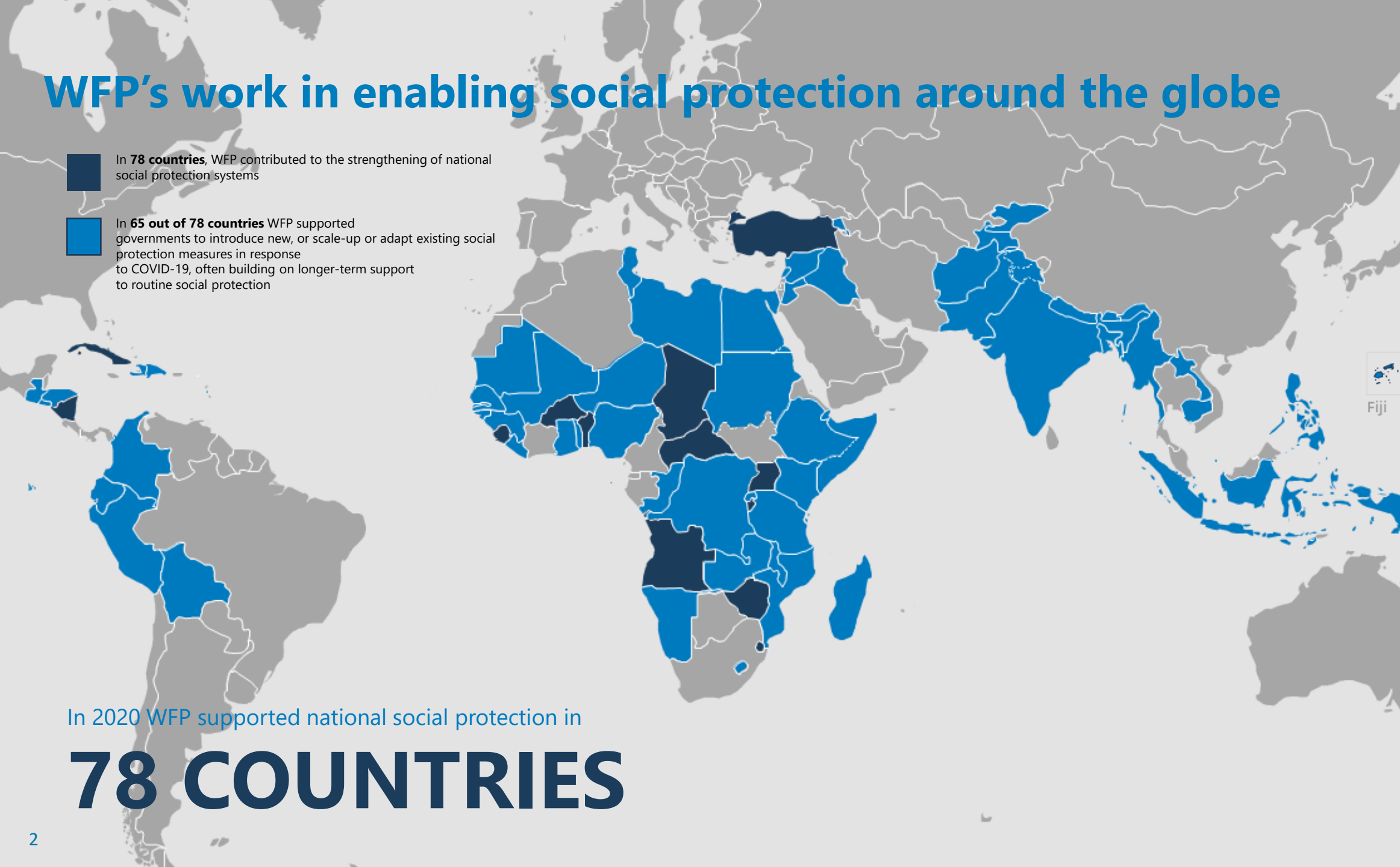
World Food
Programme

SAVING
LIVES
CHANGING
LIVES

WFP's work in enabling social protection around the globe

 In **78 countries**, WFP contributed to the strengthening of national social protection systems

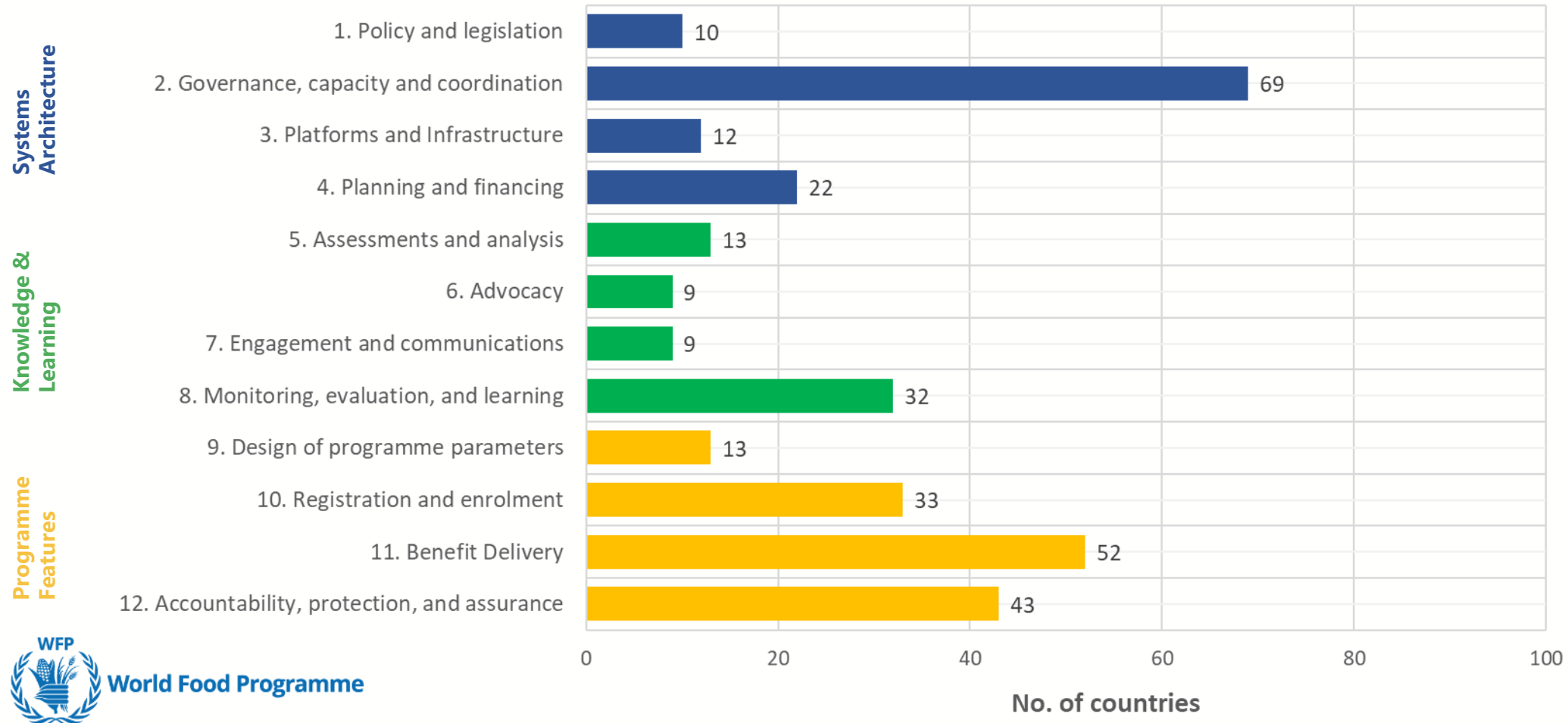
 In **65 out of 78 countries** WFP supported governments to introduce new, or scale-up or adapt existing social protection measures in response to COVID-19, often building on longer-term support to routine social protection



In 2020 WFP supported national social protection in

78 COUNTRIES

WFP's support to national social protection systems and programmes, 2020



World Food Programme

WFP's value proposition

1. FIELD PRESENCE
2. OPERATIONAL EXPERIENCE
3. ANALYTICAL CAPABILITIES
4. FOOD SECURITY AND NUTRITION EXPERTISE
5. WORKING ACROSS THE HUMANITARIAN-DEVELOPMENT-PEACE NEXUS



WFP'S ENGAGEMENT IN SOCIAL PROTECTION

A photograph of a classroom with several wooden desks and benches. A chalkboard in the background contains mathematical equations. The text "Partner discussions" is overlaid in a white font on a semi-transparent blue background.

Partner discussions



WFP's strategic framework for social protection

The strategic framework

PART 1 VISION

WFP's vision is that by 2030 people will have substantially increased access to national social protection systems that safeguard and foster their ability to meet their food security, nutrition and associated essential needs, and to manage the risks and shocks they face



PART 2 PRIORITIES

This implies two interlinked priorities:

1



Social protection that helps people to meet their food security, nutrition and associated essential needs

Approaches that are:

- Food security-specific / nutrition-specific; or
- Food security-sensitive / nutrition-sensitive; or
- Aimed at meeting essential needs / poverty reduction / human capital development

2



Social protection that helps people to manage risks and shocks

- Reducing and addressing idiosyncratic and covariate risks
- Building resilience
- Providing effective support in contexts of disruption

PART 3 SOCIAL PROTECTION FOR WHOM?

We will support and promote the inclusion of people with diverse and often intersecting vulnerabilities and inequalities:

Economic



Social



INTERSECTING
INEQUALITIES

Geographical



PART 4 MODES OF SUPPORT

We will provide our support in a variety of ways, which may also be blended or combined:



Supporting nationally-led social protection systems and programmes

- Advice and guidance to national actors
- Delivery on behalf of national actors



Complementary actions in WFP's own programming

PART 5 AREAS OF WORK

We will pursue four key areas of work as we advance towards this vision:

1

Contribute to strengthening the **national social protection system** architecture

2

Support enhancements to the quantity and quality of **national social protection programming**

3

Improve the effectiveness of social protection in the shared space between humanitarian, development and peace actors

4

Build social protection partnerships and evidence globally

Questions & Answers





Different returns on investment

Low investment, reaching lots of people

Strengthening national systems in **India** (targeting, supply chains)

With USD4 million a year, WFP impacts nearly 200 million beneficiaries

Making the national cash transfer programme work better for nutrition in **Dominican Republic**

Chronic malnutrition fell from 12% to 5%, and prevalence of acute malnutrition decreased by 80% for the 25% of the total population covered by the programme

Low investment, making a big difference to those reached

Medium investment, catalyzing resources

Supporting system-building in **Haiti**

Policy, governance, programme design and platform work led to USD75+ million from International Financial Institutions for policy implementation, with lead role for WFP

Structural solution for a chronic lean season problem in **Malawi**

Social protection donors provided financial support for the first time to the 2019 / 2020 lean season emergency response, **enabling the country to reach 38% more food insecure people** in those districts and cost-efficiency gains

Medium investment, big efficiency gains