



Global Overview of Needs and Response

EXECUTIVE BOARD



18 June 2021

2

EMERGENCY OPERATIONS DIVISION (EME)

AGENDA

**FOOD INSECURITY, DRIVERS
& RISKS OUTLOOK**

**SCALING-UP LIFE-SAVING FOOD
AND NUTRITION ASSISTANCE**

**INVESTING IN HUMAN
CAPITAL AND PREVENTION**

**GLOBAL AND NATIONAL
PARTNERSHIPS**

**OPERATIONS OF HIGHEST
CONCERN**

**OPERATIONAL REQUIREMENTS
AND FUNDING NEEDS**

FOOD INSECURITY, DRIVERS AND RISKS OUTLOOK

2021 FORECAST

270.5 M



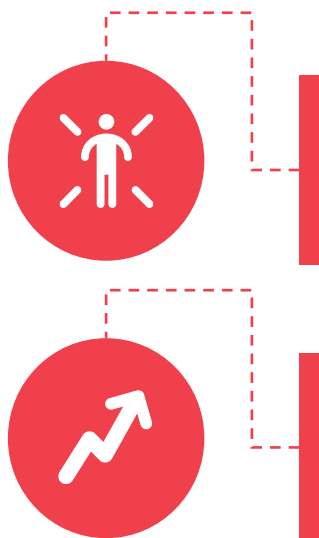
PEOPLE ESTIMATED TO BE ACUTELY FOOD INSECURE IN 80 COUNTRIES

41 M



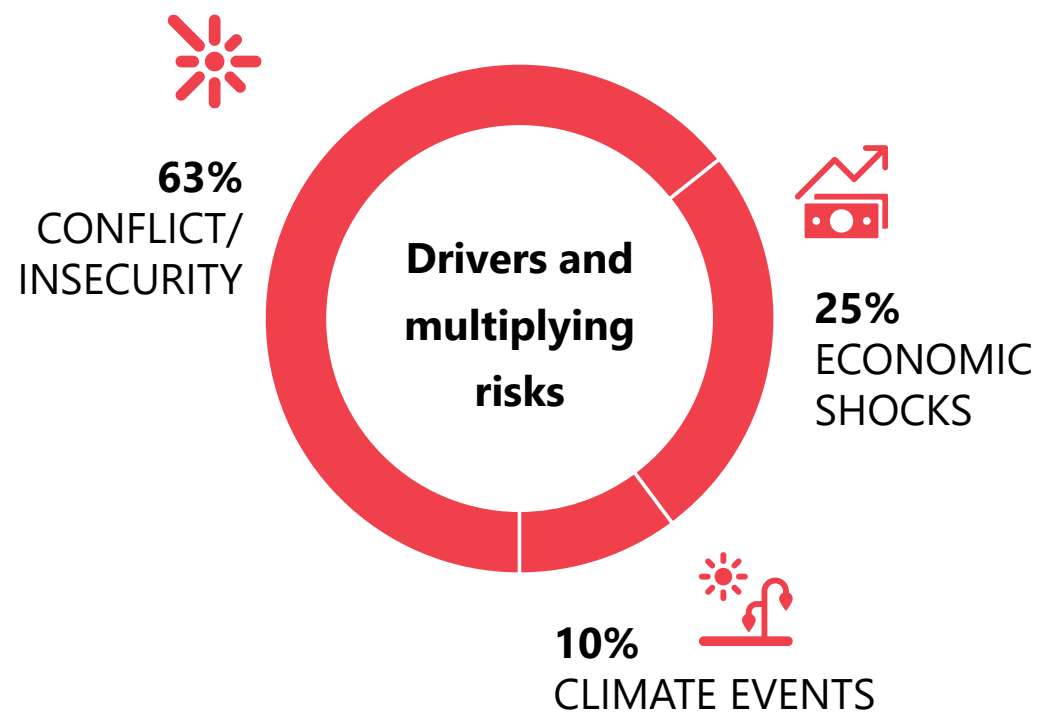
PEOPLE COULD FACE IPC PHASE 4* UP FROM 34 MILLION IN MARCH 2021.

*BASED ON MOST RECENTLY PUBLISHED INTEGRATED FOOD SECURITY PHASE CLASSIFICATION (IPC), CADRE HARMONISÉ (CH) OR EQUIVALENT ANALYSES.



The High-Level Task Force on Preventing Famine has flagged **Burkina Faso, Ethiopia, Madagascar, Nigeria, South Sudan, and Yemen**

Hunger also deepening in major crisis countries, such as **Afghanistan, Democratic Republic of the Congo (DRC), Haiti, Sudan and Syria**



In 2021, WFP is undertaking the biggest operation in its history, targeting 139 million people.



KFW
PARTAGE DES INFORMATIONS DES PRIX SUR LES MARCHES LOCAUX
LES DONNEES COLLECTEES ET AFFICHEES DU [] AU [] 20 [] TAUX : 15 [] FC

PRODUITS	UNITE DE PENSEE		POINTS DE VENTE				
	UNITE	QUANT	KABAMBA	IHUSI	NYAMUTUHI	MUKWJJA	MINOVA
MAIS	1kg		1000FC	—	—	—	1000FC
MARICOT	1kg		1700FC	1600FC	1600FC	1750FC	1800FC
ARACHIDE	1kg		4000FC	4000FC	4000FC	4300FC	3500FC
MANIOC	1kg		700FC	650FC	650FC	600FC	900FC
DIGNON	1kg		1000FC	1500FC	1500FC	—	—
SOJA	1kg		—	—	—	—	—
POTATE DOUCE	1kg		800FC	800FC	700FC	500FC	1000FC
POMME DE TERRE	1kg		1000FC	800FC	800FC	800FC	1700FC

SCALING-UP LIFE-SAVING FOOD AND NUTRITION ASSISTANCE

High-level Task Force

Mobilize support to the most affected countries: **Burkina Faso, Ethiopia, Madagascar**, northeast **Nigeria, South Sudan**, and **Yemen**.

Scaling-up assistance

WFP is continuing to scale up assistance to respond to the **increasingly severe hunger and malnutrition** conditions.

Overcoming access challenges

WFP is working to augment its capacity to **maintain and expand humanitarian access** and reach more people in need.

Treating nutrition in crises

WFP plans to reach **26.4 million people** in 2021 with nutrition activities, 85 percent of whom are experiencing humanitarian crises such as **Afghanistan, Ethiopia, Madagascar, Somalia, and South Sudan**.

Cash-based transfers

So far in 2021, WFP has transferred **USD 710 million** across **62 WFP country offices** and is supporting **40 governments** worldwide.

Anticipatory Actions

WFP is using its skills in **risk analysis, early warning, and emergency preparedness** to trigger anticipatory action at community level before humanitarian crises materialize.

INVESTING IN HUMAN CAPITAL AND PREVENTION



Strengthening social protection systems

WFP continuous collaboration with national governments advance social protection programmes, including partnering with international financing institutions (IFIs).



Building resilience and livelihoods

WFP is scaling up its resilience activities, aiming to implement resilience building programmes across **74 countries** in 2021.



Addressing underlying risks and vulnerabilities.

By championing a people-centred approach, driven by enhanced advocacy for those most in need.



School feeding around the globe

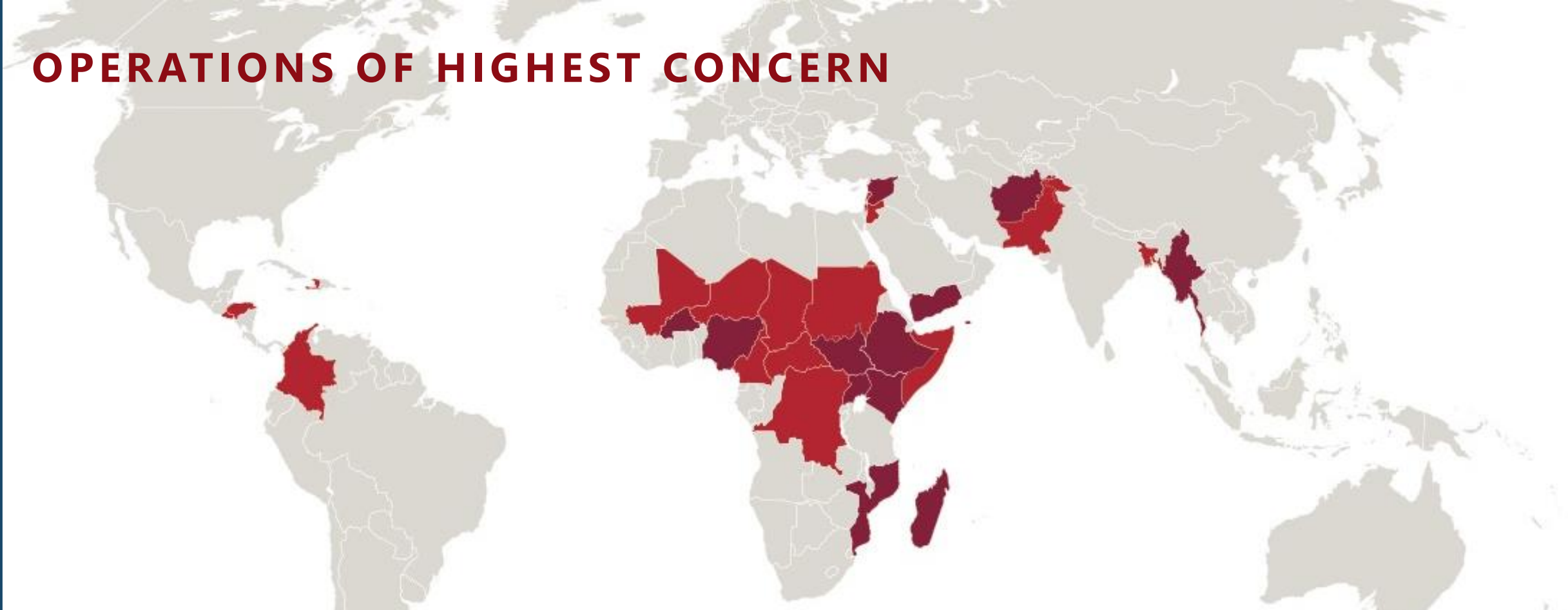
WFP joined forces with partners to respond to the COVID-19 impacts and strengthen existing school feeding programmes.



A HOLISTIC & TRANSFORMATIVE APPROACH

- Act with extraordinary speed, on a **“no regrets” basis** to address growing needs
- An **Immediate Response Account (IRA)** that serves as a crisis response funding mechanism
- Continuous **replenished pool of emergency qualified staff** and/or partner arrangements for immediate deployment
- **Simplified processes** to lessen burden on field and ensure speed and flexibility in crisis response
- Scale-up and adaptable response that strengthens **resilience and protects livelihoods**, particularly those vulnerable to the **impacts of economic and climate crises**.

OPERATIONS OF HIGHEST CONCERN



AFGHANISTAN
BURKINA FASO
ETHIOPIA
KENYA
MADAGASCAR
MOZAMBIQUE

MYANMAR
NIGERIA
SOUTH SUDAN
SYRIA
UGANDA
YEMEN

BANGLADESH
CAMEROON
CAR
CHAD
COLOMBIA
DRC

EL SALVADOR
HAITI
HONDURAS
JORDAN
LEBANON
MALI

NIGER
PAKISTAN
STATE OF PALESTINE
SOMALIA
SUDAN

OPERATIONAL REQUIREMENTS AND FUNDING NEEDS

USD 15.3 B 

WFP'S 2021 OPERATIONAL REQUIREMENTS

USD 4.5 B 

OUTSTANDING SIX-MONTH FUNDING NEEDS JUNE TO NOVEMBER 2021



Significant scale ups foreseen- **Ethiopia, Lebanon, Afghanistan, Sudan, and Syria.**



2021 global contribution forecast projected at **USD 8.3 billion**; cover **55% of the increased operational requirements.**



The **IRA** vital component in frontline emergency response throughout the pandemic – enabling rapid scale up assistance in **Mozambique, Pakistan, Yemen, and Burkina Faso.**



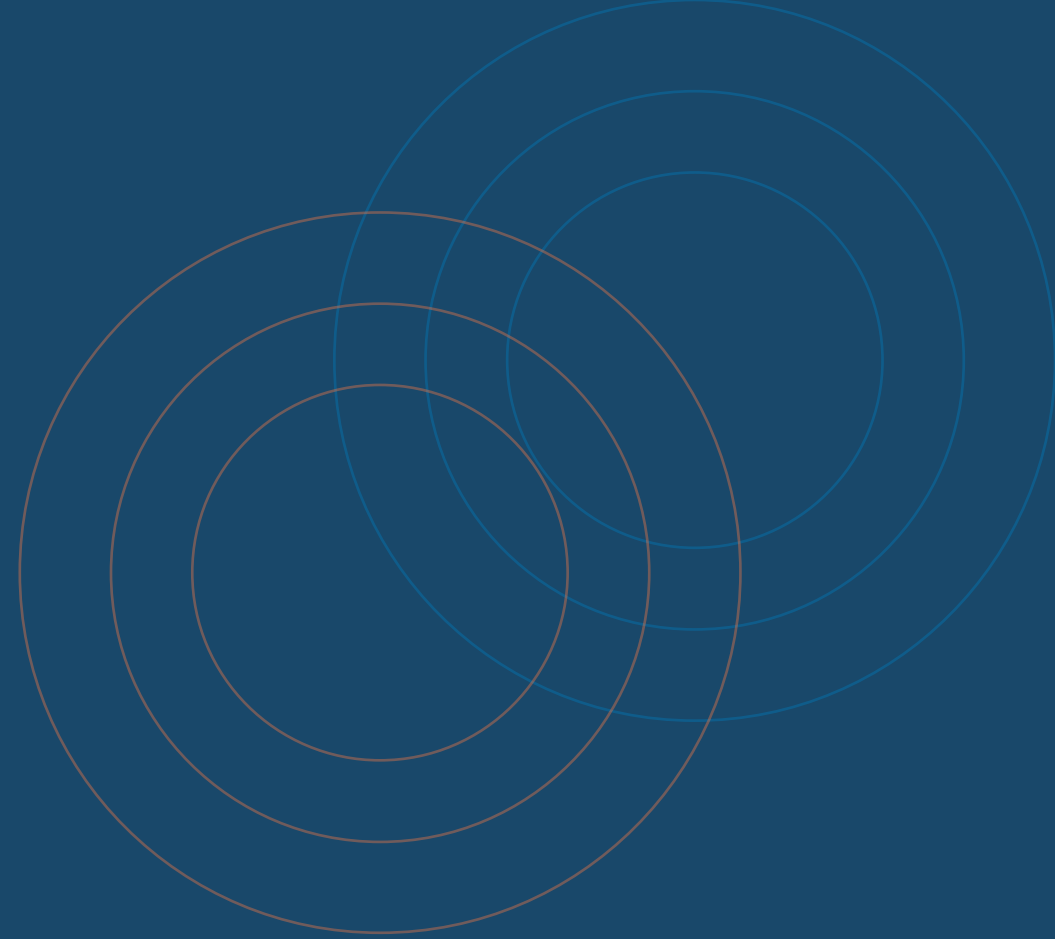
Funding crunch is forcing WFP to **scale back food assistance** to the most vulnerable people.



18 June 2021

10

EMERGENCY OPERATIONS DIVISION (EME)



EMERGENCY OPERATIONS (EME) DIVISION

For more information contact: hq.ose.oss.list@wfp.org