



World Food Programme

SAVING
LIVES
CHANGING
LIVES

Annual Performance Report 2020

Presentation to the Executive Board

21 June 2021

Global context defined by COVID-19, conflict and climate change

In 2020

124M

estimated number of people living in extreme poverty

270M

people acutely food insecure in 79 countries (82% more than in 2019)

80M

people forcibly displaced by war, conflict or persecution

23M

people displaced annually due to climate-related disasters

In 2021

34M people at risk of famine



WFP's response to COVID-19



Sustained ongoing operations



Scaled up assistance



Supported national systems

27,000

Health and humanitarian personnel transported to **68 countries**

500

staff deployed to fill **critical gaps**

16%

increase in **local purchases** from smallholders

8

Humanitarian Response Hubs established for cargo movement during the pandemic

415

Organizations supported through **WFP Common Services**

1,510

Passenger flights

100

CSP activities across countries reported progress towards long-term **institutional capacity outcomes**

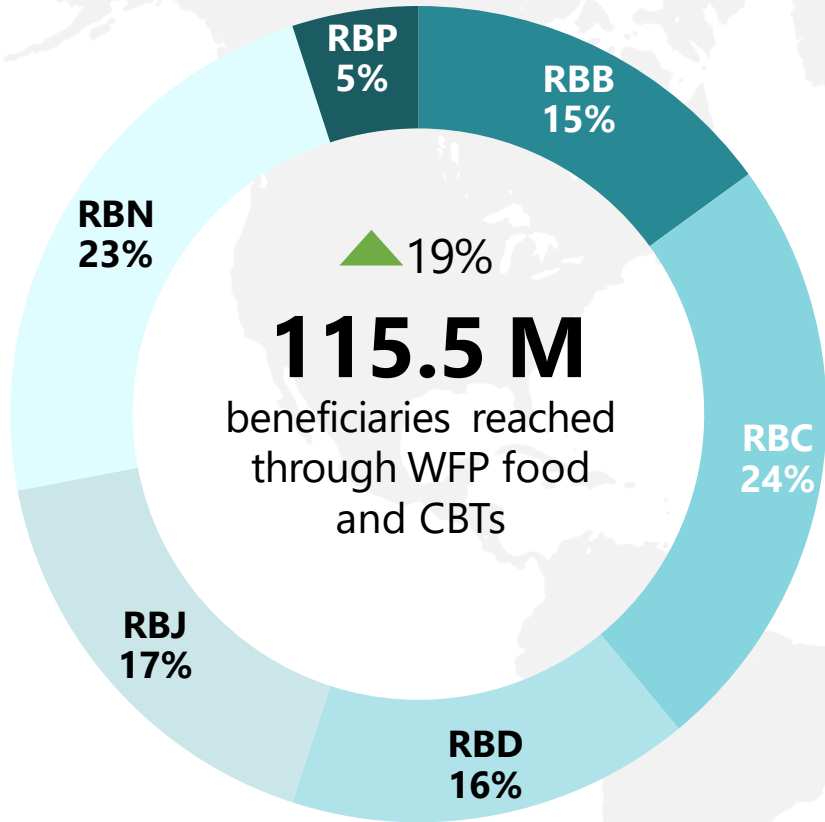
65

countries where governments' **social protection schemes** were supported

COVID-19

South-South fund established to implement activities with governments to respond to COVID-19

Record number of people assisted



▶ 0% ▲ 11%
4.2M mt to **82.1 M**
 food provided people

▶ 0% ▲ 37%
2.1 B to **38.4 M**
 transferred (USD) through
 CBT and commodity
 vouchers people



- Beneficiaries assisted by food and CBT transfer modalities will not add to 115.5 million reached in total due to some beneficiaries receiving a combination of transfers in 2020
- WFP delivered 4.4M mt to Cooperating Partners (including Lebanon millers, ETCO and Zimbabwe service delivery) with 4.2M mt distributed to tier 1 beneficiaries in 2020

Programme performance by Strategic Objective

STRATEGIC OBJECTIVE		PERFORMANCE RATING		OUTCOME INDICATORS			
		2019	2020	Total indicators	Strong progress	Moderate progress	Weak progress
1	END HUNGER BY PROTECTING ACCESS TO FOOD	●	●	39	33	4	2
2	IMPROVE NUTRITION	●	●	33	30	2	1
3	ACHIEVE FOOD SECURITY	●	●	22	15	3	4
4	SUPPORT SDG IMPLEMENTATION	●	●	10	7	2	1
5	PARTNER FOR SDG RESULTS	●	●	6	5	1	0

Most-commonly applied indicators reveal important challenges

- Food Consumption Score
- Consumption-based Coping Strategy Index
- Food Consumption Score- Nutrition (Iron)
- Food Consumption Score – Nutrition (Vitamin A)

Two of the three food consumption score-nutrition indicators had weak performance in terms of diet quality.

Out of 26 countries that used these indicators, the targets for improving iron and vitamin A intake were not met in eight and nine countries, respectively.

Thus, 80% target was not achieved.

CURRENT LIMITATIONS

Indicator weighting / Data availability (country offices reporting) / Target setting

Management Performance

KPI 1: CSP Implementation

96% Outputs Under Implementation	96% Outcomes Under Implementation	60% Outputs Achieved / On-Track	66% Outcomes Achieved / On-Track
---	--	--	---

KPI 2: Emergency Preparedness and Response

88% Corporate Alert System countries benefitted from advance financing	100% Training areas met target number of trainings in emergency response	93% Learning objectives were met across emergency response trainings
--	--	--

KPI 3: Management Performance Standards

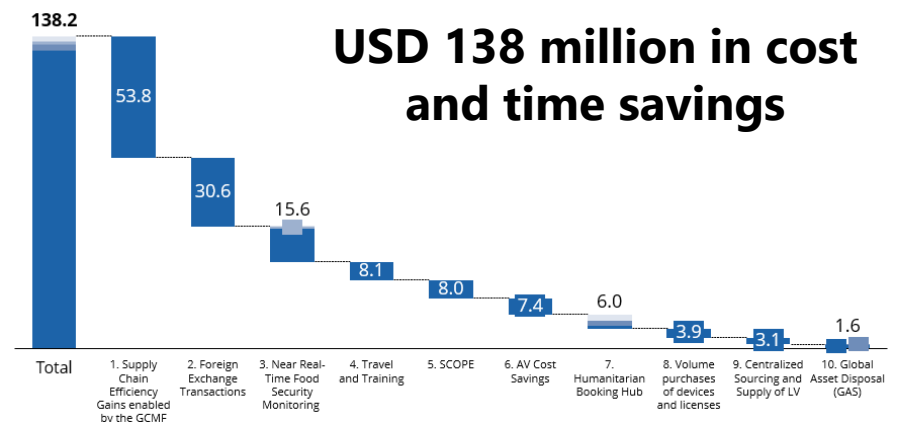
The following functional areas met 2020 targets

- Management
- Supply chain
- Budget and programming
- Finance
- Administration
- Human resources
- Security
- Information technology
- Donor relations, communications and reporting

Critical Corporate Initiatives

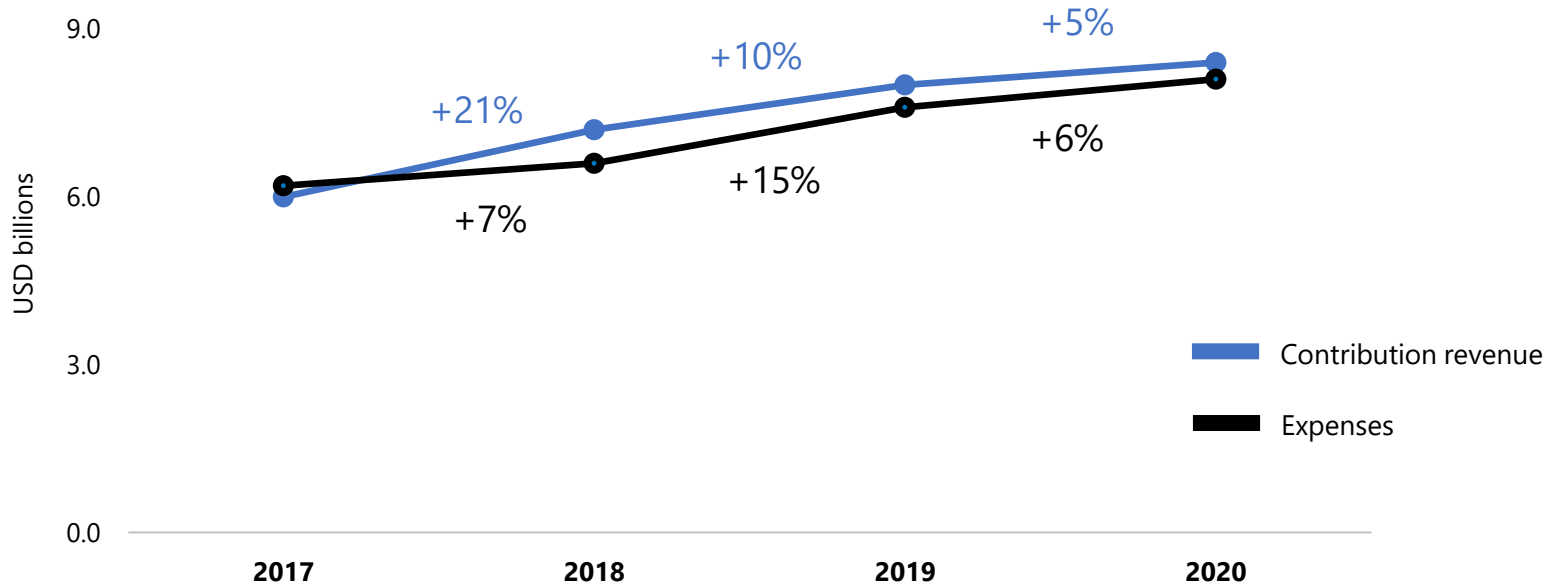
	Critical Corporate Initiative	Initial Timeframe (years)	Budget approved in MP (2020)	Expenditures (2020)
On-going	Integrated Road Map (COMPLETE)	1	-	0.2
	Workforce 2020	2	-	2.4
	WFP 2030 Fund	2	-	4.2
	Cash and Digital Platform	2	-	8.7
Renewed	Systems Integration and IT-Enabled Efficiencies	1	11.0	6.6
	United Nations reform	2	8.1	4.2
New	Programme/partnership support	2	2.5	0.9
	Private sector strategy	2	13.1	12.6
	Workplace culture/ethics	2	5.0	1.6
TOTAL			39.7	41.1

Top Ten Efficiency Gains in 2020



Needs, contribution revenue, expenses

TOTAL NEEDS	CONTRIBUTION REVENUE	EXPENSES
USD 13.7 billion	USD 8.4 billion	USD 8.1 billion



- ▶ Record contributions of USD 8.4 billion compared to USD 8 billion in 2019
- ▶ Upsurge reflects donors' confidence in WFP to address needs in challenging conditions
- ▶ Contributions came from 104 funding sources (government donors, private sector, United Nations, IFIs etc.) compared to 90 funding sources in 2019

Thank you

