



3 June 2021

1

WFP EME AND RAM

EMERGING CRISIS

EXECUTIVE
BOARD
BRIEFING

EMERGING CRISES

AGENDA

PART 1: FOOD SECURITY ANALYSIS

Research, Assessment and Monitoring Division - RAM

PART 2: COUNTRIES OF CONCERN

Emergency Operations Division - EME

PART 3: WFP's HOLISTIC & TRANSFORMATIVE APPROACH

Emergency Operations Division - EME

FOOD SECURITY ANALYSIS

3 June 2021

3

WFP EME AND RAM

2019

135 M



FOOD INSECURE PEOPLE

55



COUNTRIES

Population coverage ranges from 4-100%

GLOBAL REPORT
ON FOOD CRISES

2020

155 M



FOOD INSECURE PEOPLE

55



COUNTRIES

The list of countries differs for 10 countries from the 2019 list
Population coverage ranges from 4-100%

GLOBAL REPORT
ON FOOD CRISES

2021 FORECAST

174 M



PROJECTED FOOD INSECURE PEOPLE

58



COUNTRIES

Population coverage ranges from 4-100%

HUNGER HOTSPOTS
FAO-WFP

2021 FORECAST

270 M



PROJECTED FOOD INSECURE PEOPLE

79



COUNTRIES

Urban and rural areas comprehensively covered, including also refugee populations

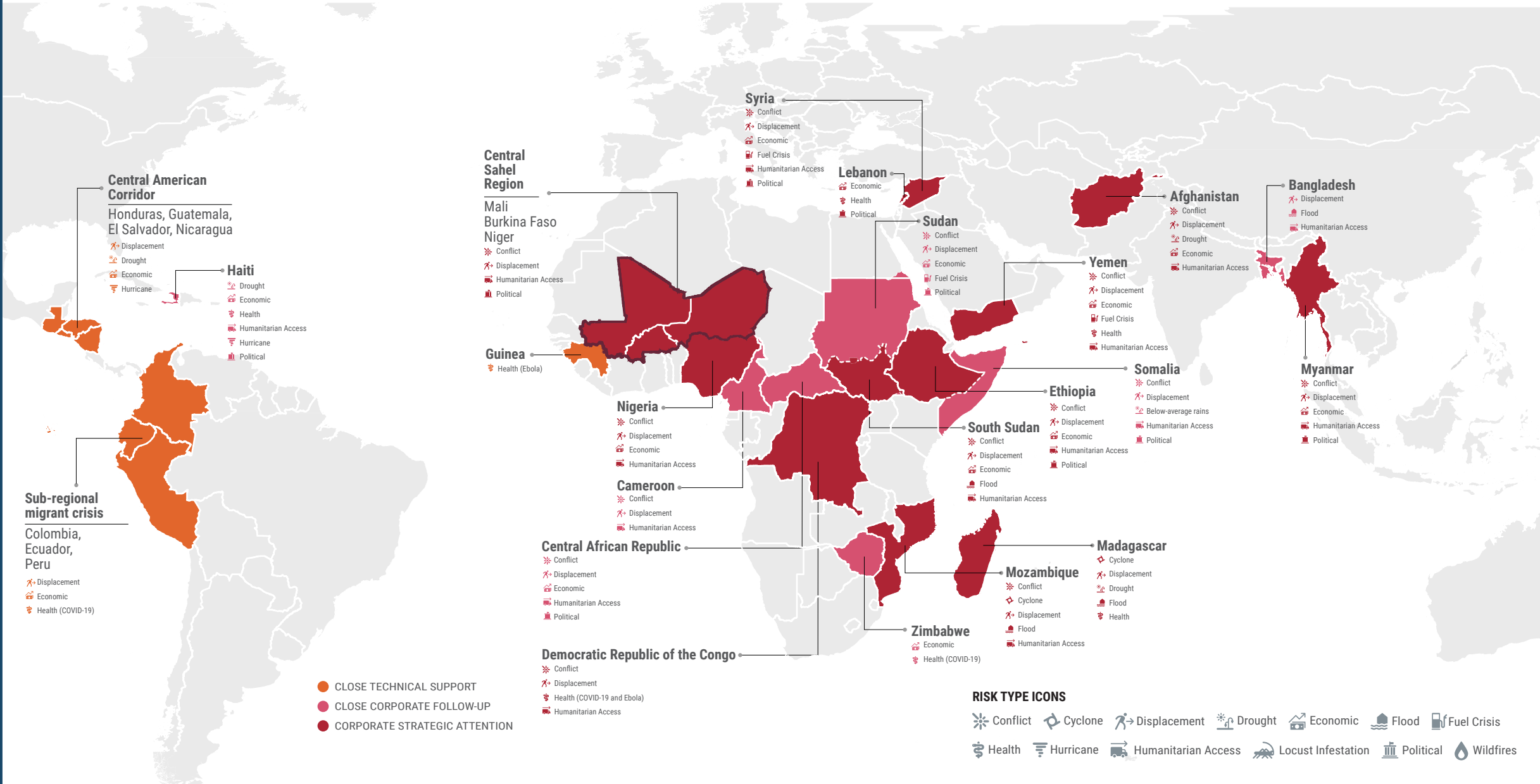
WFP GLOBAL
OPERATIONAL
RESPONSE PLAN

CORPORATE ALERT SYSTEM

3 June 2021

4

WFP EME AND RAM



Central American Corridor

Honduras, Guatemala, El Salvador, Nicaragua

- Displacement
- Drought
- Economic
- Hurricane

Haiti

- Drought
- Economic
- Health
- Humanitarian Access
- Hurricane
- Political

Sub-regional migrant crisis

Colombia, Ecuador, Peru

- Displacement
- Economic
- Health (COVID-19)

Central Sahel Region

Mali
Burkina Faso
Niger

- Conflict
- Displacement
- Humanitarian Access
- Political

Guinea

- Health (Ebola)

Nigeria

- Conflict
- Displacement
- Economic
- Humanitarian Access

Cameroon

- Conflict
- Displacement
- Humanitarian Access

Central African Republic

- Conflict
- Displacement
- Economic
- Humanitarian Access
- Political

Democratic Republic of the Congo

- Conflict
- Displacement
- Health (COVID-19 and Ebola)
- Humanitarian Access

Syria

- Conflict
- Displacement
- Economic
- Fuel Crisis
- Humanitarian Access
- Political

Lebanon

- Economic
- Health
- Political

Sudan

- Conflict
- Displacement
- Economic
- Fuel Crisis
- Political

Yemen

- Conflict
- Displacement
- Economic
- Fuel Crisis
- Health
- Humanitarian Access

Afghanistan

- Conflict
- Displacement
- Drought
- Economic
- Humanitarian Access

Bangladesh

- Displacement
- Flood
- Humanitarian Access

Myanmar

- Conflict
- Displacement
- Economic
- Humanitarian Access
- Political

Somalia

- Conflict
- Displacement
- Below-average rains
- Humanitarian Access
- Political

Ethiopia

- Conflict
- Displacement
- Economic
- Humanitarian Access
- Political

South Sudan

- Conflict
- Displacement
- Economic
- Flood
- Humanitarian Access

Madagascar

- Cyclone
- Displacement
- Drought
- Flood
- Health

Mozambique

- Conflict
- Cyclone
- Displacement
- Flood
- Humanitarian Access

Zimbabwe

- Economic
- Health (COVID-19)

- CLOSE TECHNICAL SUPPORT
- CLOSE CORPORATE FOLLOW-UP
- CORPORATE STRATEGIC ATTENTION

RISK TYPE ICONS

- Conflict
- Cyclone
- Displacement
- Drought
- Economic
- Flood
- Fuel Crisis
- Health
- Hurricane
- Humanitarian Access
- Locust Infestation
- Political
- Wildfires



COUNTRIES OF CONCERN

16.9 M

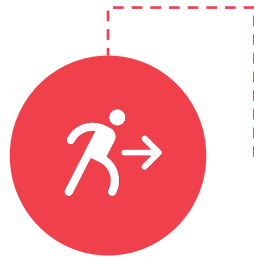
PEOPLE IN IPC 3 AND ABOVE*

5.5 M

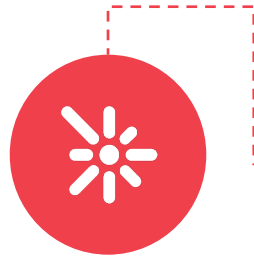
PEOPLE IN IPC PHASE 4*

AFGHANISTAN

*IPC SEPTEMBER 2020, PROJECTIONS
NOVEMBER 2020-MARCH 2021
(FLOWMINDER POPULATION DATA)



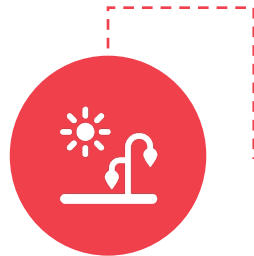
Scheduled withdrawal of international forces will likely **increase violence and displacement.**



Access is and will become more of an issue as we look to scale under current conditions.



The Ministry of Agriculture fear the **wheat deficit could be as high as 2.9 million mt**



Afghanistan received **only half the usual rains between October 2020-February 2021**, and the Central and Western regions are experiencing the driest conditions in 30 years.

5.2 M

ESTIMATED PEOPLE IN
NEED OF EMERGENCY
FOOD ASSISTANCE*



TIGRAY CRISIS
ETHIOPIA

*IPC IS ONGOING



WFP has **deployed more than 150 staff to Tigray** since the start of the conflict and continues to build up its workforce and increase the number of food distributions.



The **highly insecure and challenging environment** makes operational planning and access remarkably difficult. **Security of staff is a major concern.**



Ahead of the results of a new IPC study, we are highly concerned at the number of people we see in need of nutrition support and emergency food assistance.



Humanitarian needs in Tigray are significant across all sectors. It is imperative to ensure displaced people and host communities receive essential non-food items.

12.8 M

PEOPLE PROJECTED TO BE IN
IPC PHASE 3 AND ABOVE*

798 K

PEOPLE PROJECTED TO BE
IN IPC PHASE 4*



NIGERIA

*CH ARPIL '21, PROJECTIONS JUNE –
AUGUST 2021



More than **8.7 million people** – **four out of five** – require **humanitarian assistance and protection** in the Northeastern Borno, Adamawa and Yobe states



Of the severely food insecure populations, at least **881,000 people** currently reside in **inaccessible areas**.



In Yobe state, the price of local **rice has gone up by 53%** over the last year and the price of **maize has increased by 140%**.



Average to above-average rainfall is expected from July to September. More than **1.2 million people** in Borno and Yobe states are living in flood-prone areas.

1.3 M

PEOPLE PROJECTED TO BE IN IPC 3 AND ABOVE*

484 K

PEOPLE PROJECTED TO BE IN IPC PHASE 4*

28 K

PEOPLE PROJECTED TO BE IN IPC PHASE 5*

MADAGASCAR

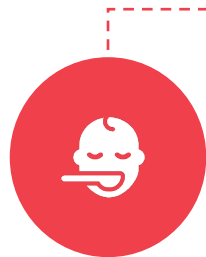
* IPC MAY 2021, PROJECTIONS OCTOBER-DECEMBER 2021



Southern Madagascar is presently facing the **most severe drought since 1981.**



55-80% of the population employing crisis to emergency coping strategies



Global Acute Malnutrition in children under five touching an alarming **16.5%**



Given **long lead times**, resources are urgently needed to the growing crisis, which will inevitably peak later this year

2.9 M

PEOPLE IN IPC 3 AND ABOVE*

265 K

PEOPLE IN IPC PHASE 4*

L2

MOZAMBIQUE

* IPC OCTOBER 2020, PROJECTIONS JANUARY-MARCH 2021



698,000 internally displaced people, over **70,000** remain in inaccessible areas



As of mid-May 2021, the **security situation is not stabilized** in the district (flights to Afungi are suspended).



Cabo Delgado also has one of the **highest rates of chronic malnutrition in the country: 53%** compared to the national average of 43%



A **pipeline break** in both in-kind and CBT distributions will occur from June 2021. Food commodities in stock will only be sufficient for half rations in **June and July 2021**.

6.8 M

PEOPLE ESTIMATED TO BE ACUTE FOOD INSECURE*

including

3.4 M

RECENT ADDITIONS



MYANMAR

* PRE-COVID-19 BASELINE PLUS RECENT ADDITIONS



WFP is scaling up its urban response to provide blanket food security assistance to up to 2 million people for six months (May – October 2021).



The economy is under significant strain. With the continued upward trends in food and fuel prices since February, inflationary pressure is likely to hit urban poor populations hardest.



WFP is coordinating with UN agencies on implementing a **rapid response mechanism**.

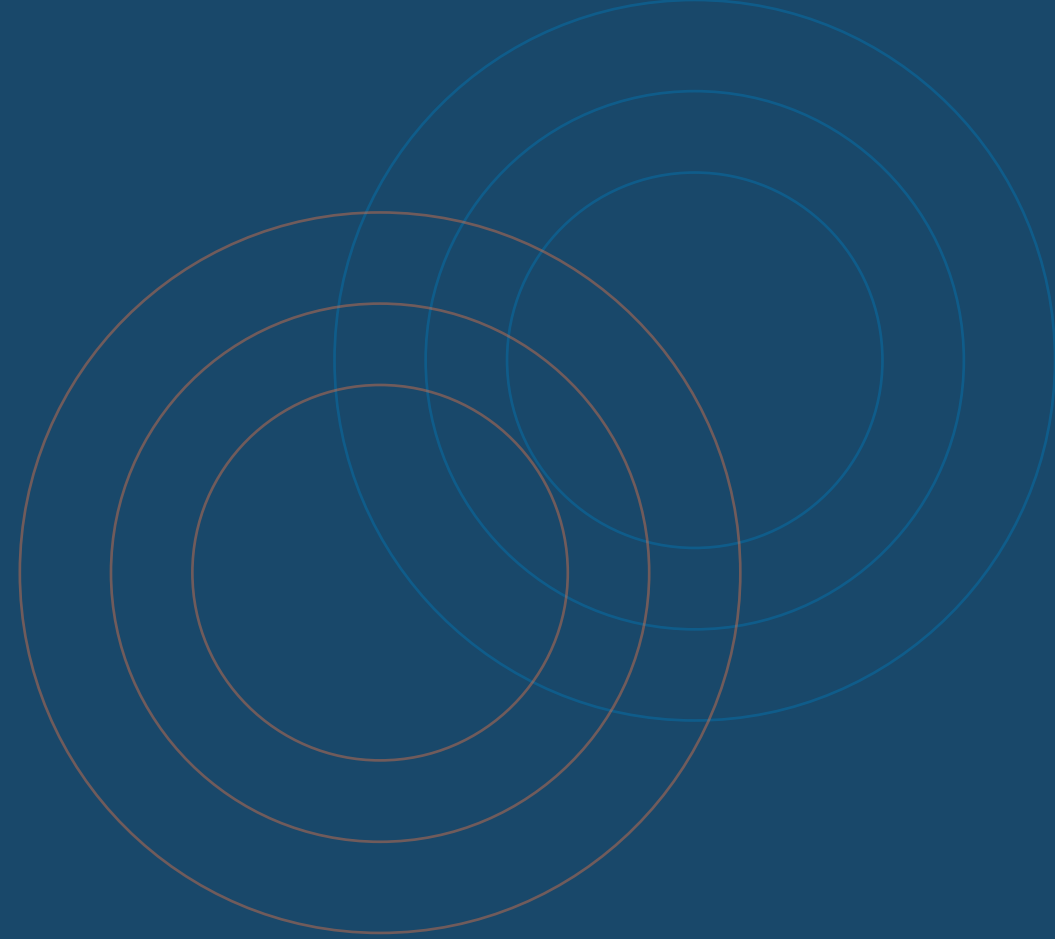


Continuing escalation of violence were reported in at least 6 out of 14 states and regions, which have recently **displaced well over 100,000 civilians**.



A HOLISTIC & TRANSFORMATIVE APPROACH

- Act with extraordinary speed, on a **“no regrets” basis** to address growing needs
- Address critical **funding gaps** through increased **advocacy**
- Promote and lead strategic alliances and **partnerships**
- Promote humanitarian **access and protection**
- Strengthen **data collection, analysis and monitoring and early action**
- Ensure leadership and **human resources in the field**
- Reduce burden on the field through **simplified processes**
- **Engage with IFIs on opportunities** in countries of highest concern/priority



EMERGENCY OPERATIONS (EME) DIVISION

RESEARCH, ASSESSMENTS AND MONITORING (RAM) DIVISION

For more information contact: hq.ose.oss.list@wfp.org

For queries, please contact: wfp.vaminfo@wfp.org