



Presentation to the Executive Board

Regional Bureau for Southern Africa

November 2020

Forecasting, Assessment & Monitoring

Drought Hotspot



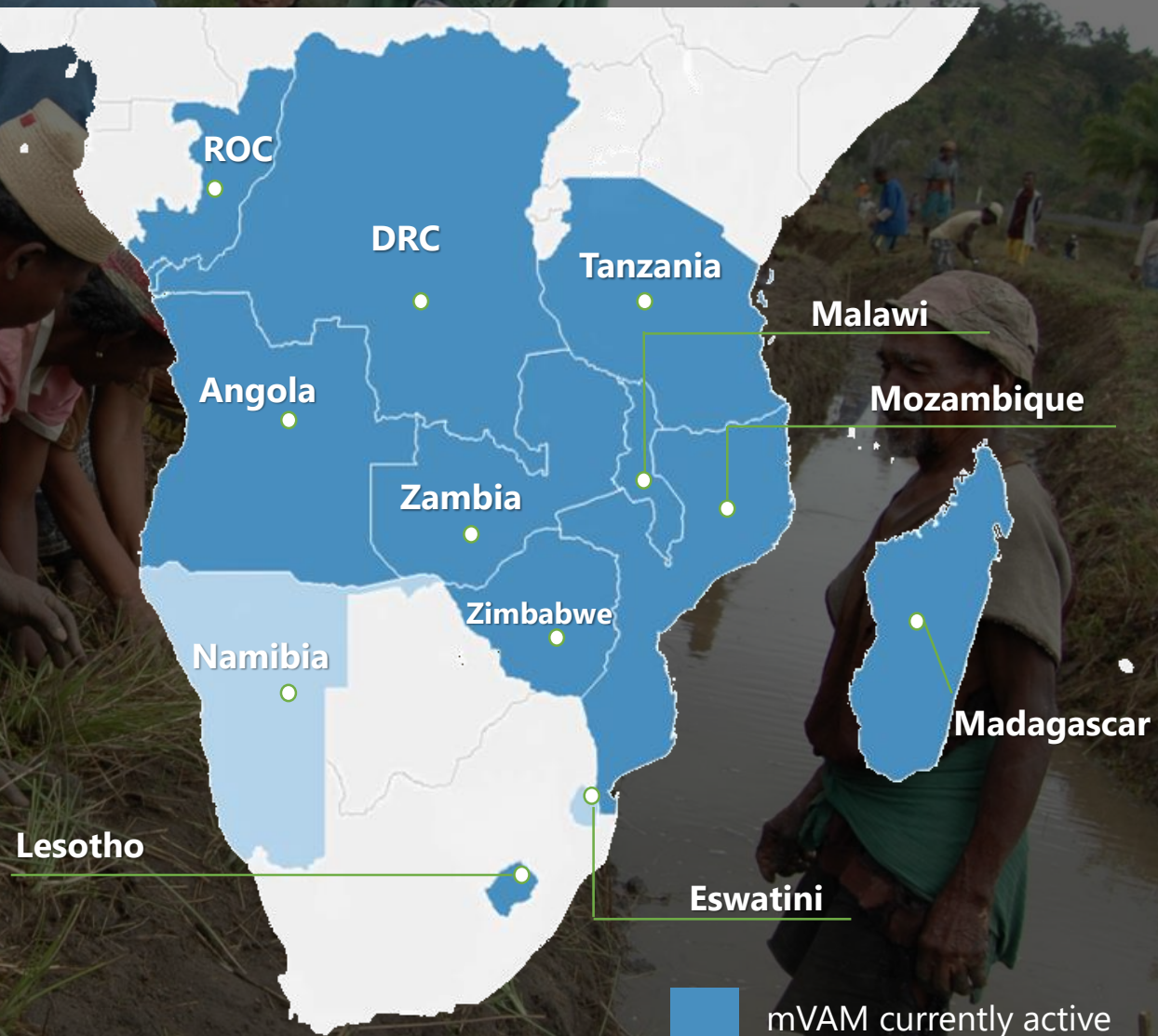
Vulnerability Assessment


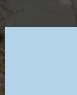
In April, Projected **42-52 million** Food Insecure People

In July, the first estimate of Food Insecure People was **45 million**
In October, increased to **51 million**

Based on monthly rainfall, dry spells, start of the growing season, vegetation index & land surface temperatures

Based on household assessments



 mVAM currently active
 mVAM in progress

Social Protection Urban Response

WFP has successfully supported national governments in scaling up COVID-19 responses in a number of countries and complemented those efforts

Technical assistance in support of government efforts



Support governments with own safety nets

Zambia

WFP reached over **181,500** people residing in high-density and low-income urban and peri-urban areas through Social Cash Transfer Programme

Zimbabwe

WFP is scaling up its urban social assistance programme to reach **326,000** people across 22 vulnerable urban domains



Anticipatory Action

Supply Chain Efficiency

Funds from the Global Commodity Management Facility yielded cost savings with **lead times reduced by 3 months**

Cost-savings

Early Procurement
July 2020



USD198/MT

35%

Regular Procurement
October 2020

USD320/MT



USD500/MT

17%

USD600/MT

Prompt responses by RBJ for the 2020 period to date resulted in procurement of **125,562MT** of food with a total saving of **\$6 million**

Republic of Congo

Mbala Pinda project with **eight women's groups** processed & distributed **70,000 snack bars** to local schools

Mozambique

WFP is working with local authorities to create markets in rural areas to help local communities **access food** closer to them

Lesotho

188 small scale retailers linked with national miller to access food commodities at competitive prices & steady supply

Tanzania



73,000 farmers reached through training



Post-harvest losses decreased to **17.6%**



4,148 hermetic bags provided

Food Systems

Country Examples

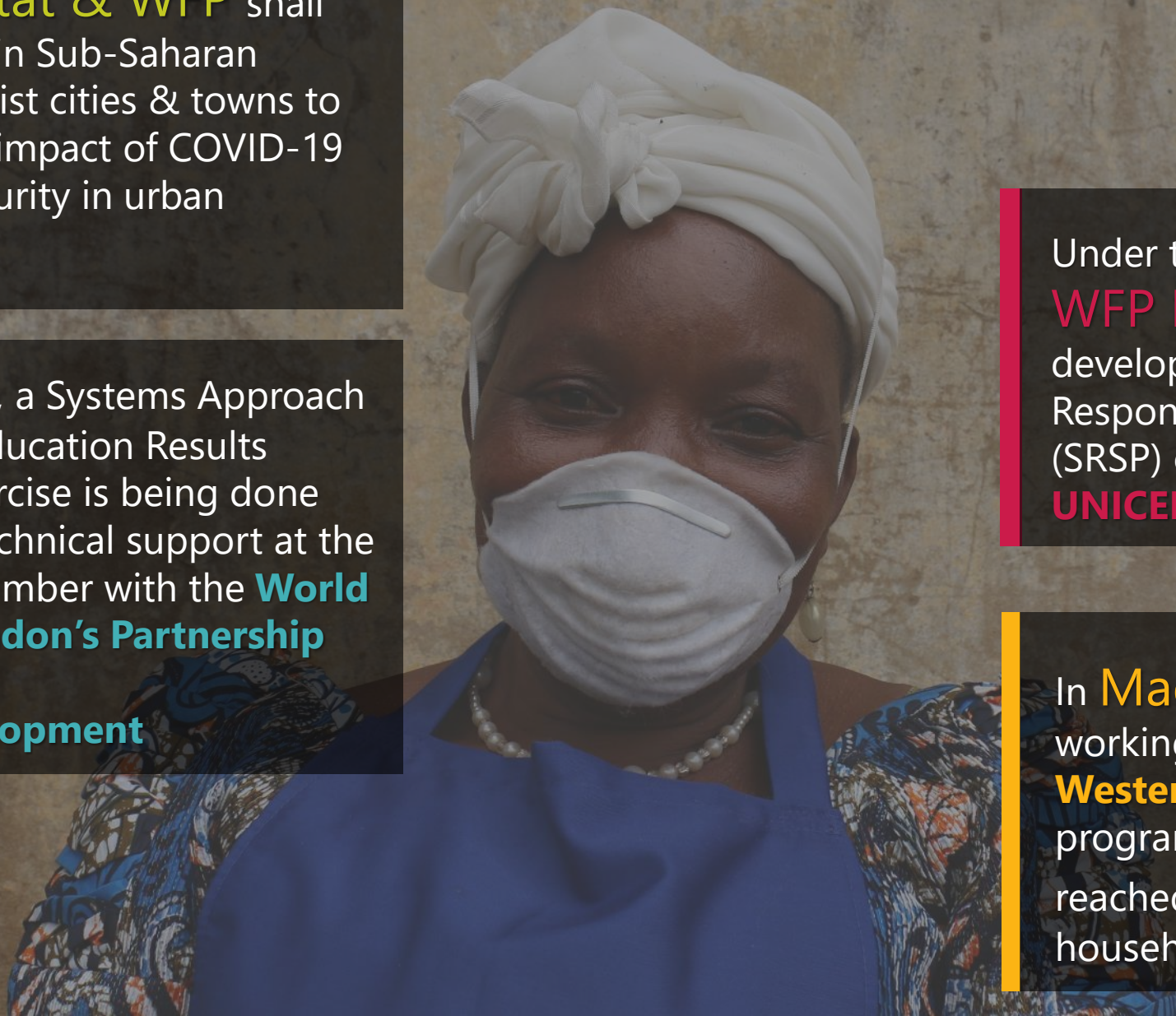
Social Protection Partnerships

UN-Habitat & WFP shall collaborate in Sub-Saharan Africa to assist cities & towns to analyse the impact of COVID-19 on food security in urban settings

In **Angola**, a Systems Approach for Better Education Results (SABER) exercise is being done with WFP technical support at the end of November with the **World Bank** & **London's Partnership for Child Development**

Under the **TRANSFORM** initiative **WFP Malawi** spearheaded the development of a Shock Responsive Social Protection (SRSP) curriculum with **ILO** & **UNICEF**

In **Madagascar**, WFP is working with **government & Western Union** on a cash-transfer programme. WFP has reached **425,000** vulnerable households since April



Gender & Protection

Regional

Food insecurity in the region is **mutually reinforced** by climate change & conflict

Over **50% of food insecurity** in the region is resulting from or contributing towards further conflict & instability

WFP, UNDP & IOM recently received **multi-year peace-building funding** to support a joint project



Women & girls suffer **disproportionately** from violent conflict

Women & children are experiencing **high rates of GBV**, displacement & slower progress in food security

Peace Promotion

DRC

DRC now has **more people living in crisis than any other country** in the world with an estimated **21.8 million people facing emergency** levels of food insecurity & **five million malnourished children**

1

Four provinces account for 50% of food insecure people driven by conflict, displacement & disease outbreaks

2

4

Robust **conflict & risk analysis** undertaken to inform CSP implementation including in the Grand Kasai project

3

Integration of peacebuilding into resilience & recovery programme resulted in a **50% reduction in community conflict**



Peace Promotion

Mozambique

1

Insecurity in Cabo Delgado has forced over **360,000 people** to flee their homes

Remote monitoring indicates that **50% of households** in assessed populations have **run out of food stocks**

2

4

Access to all affected communities & compliance with **humanitarian principles** critical to response



3

Peacebuilding Fund Project launched with UNDP & IOM to foster stabilization & promote cross-border community dialogue in Mozambique & Tanzania

Needs: November 2020 – April 2021

Total Requirement
USD 1,100,500,000

Root Causes

Resilience Building

Crisis Response

Net Requirement
USD 695,800,000

Shortfall

Received

