



World Food  
Programme

# COVID-19 Update



SAVING  
LIVES  
CHANGING  
LIVES

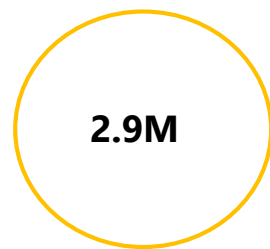
29 June 2020



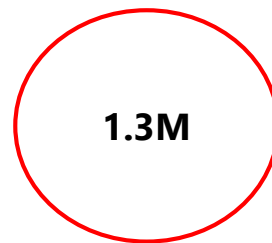
### Global Update

**The number of confirmed COVID-19 cases globally exceeded 10 million. New cases growing faster than ever worldwide, with more than 100,000 reported each day.**

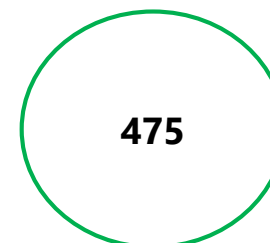
- WFP estimates that the number of acute food insecure people in its countries of operation could increase from 149 million pre-COVID-19, to 270 million before the end of the year.
- In some regions the projected increase is particularly dramatic, especially in Latin America, followed by West and Central Africa and Southern Africa.
- Lean seasons and poor rainfall, desert locusts' outbreaks, hurricane and monsoons season, spikes in armed conflict, and socio-economic grievances exacerbate regional crises.
- Timing is critical: requirements will peak over the next three months (July–September), as the immediate consequences of the COVID-19 crisis unfold.



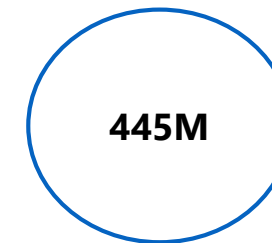
MT of food  
across the  
supply chain



Mt of food  
purchased by  
COs



Staffing surge  
positions  
requested

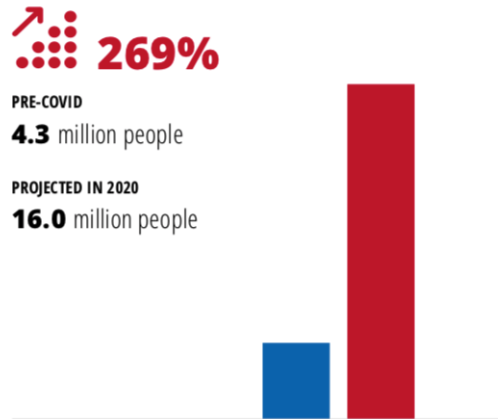


IRA &  
Multilateral

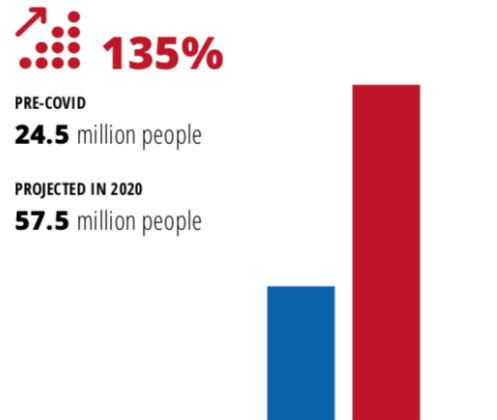


## Potential Increase of Food-Insecurity by Region

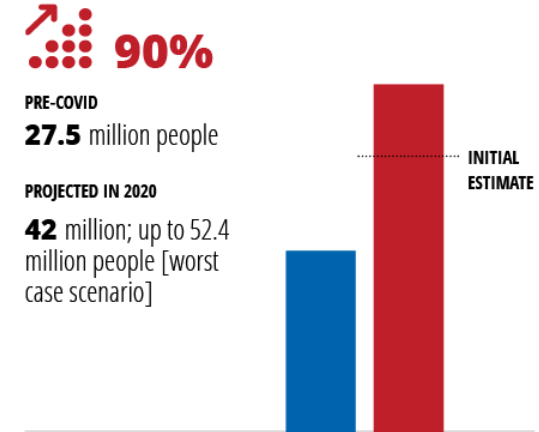
Latin America & the Caribbean



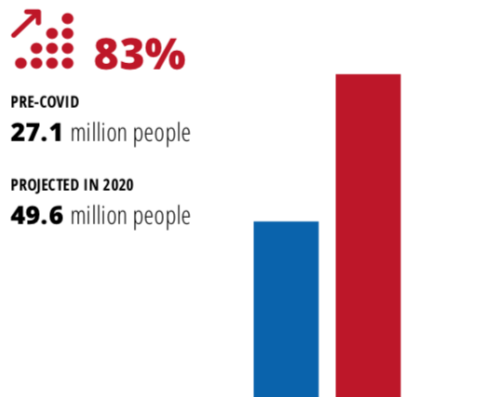
West & Central Africa



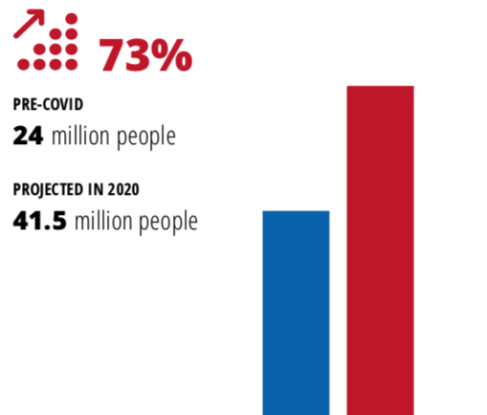
Southern Africa



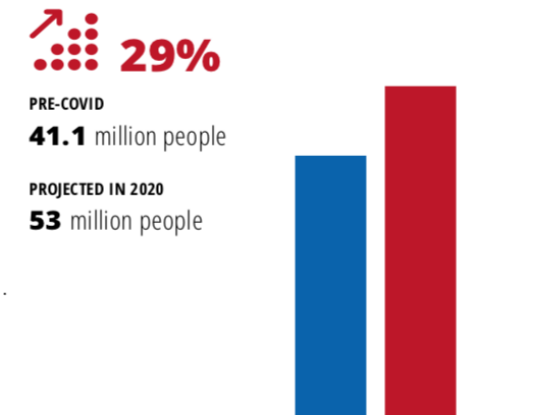
Asia & the Pacific



Eastern Africa



Middle East, Central Asia & North Africa





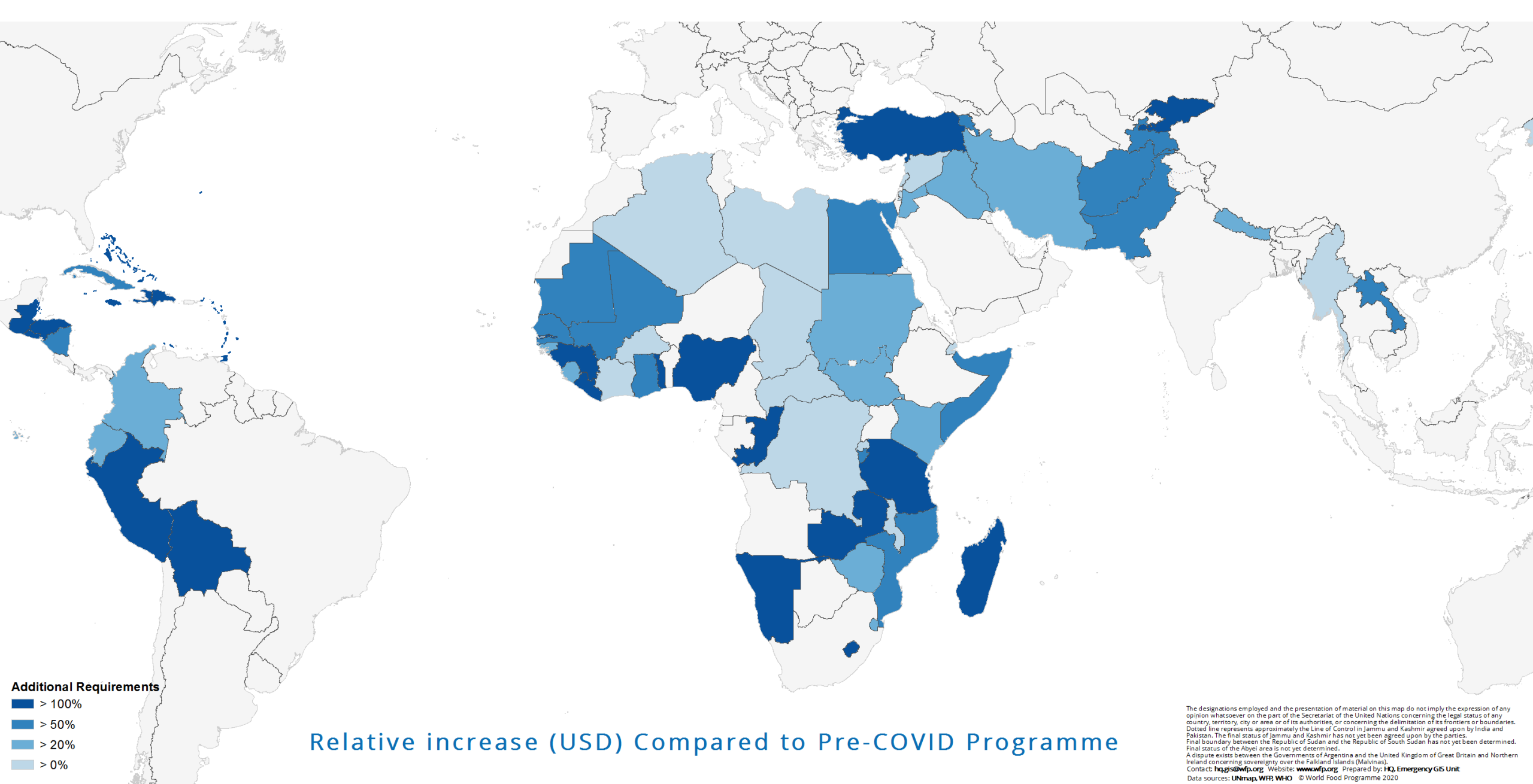
## WFP's Response Pillars

To mitigate and respond to the immediate consequences of COVID-19, WFP plans to deliver on the following pillars:

**Sustain critical assistance to WFP's 100 million** pre-COVID-19 targeted beneficiaries through alternative means of assistance

**Scale-up to support an additional 38 million** people on the brink of hunger due to COVID-19 compounded impacts

**Support governments and partners** in their COVID-19 response through provision of technical assistance, tangible assets and services, and complementary support



## Relative increase (USD) Compared to Pre-COVID Programme

The designations employed and the presentation of material on this map do not imply the expression of any opinion whatsoever on the part of the Secretariat of the United Nations concerning the legal status of any country, territory, city or area or of its authorities, or concerning the delimitation of its frontiers or boundaries. Dotted line represents approximately the Line of Control in Jammu and Kashmir agreed upon by India and Pakistan. The final status of Jammu and Kashmir has not yet been agreed upon by the parties. Final boundary between the Republic of Sudan and the Republic of South Sudan has not yet been determined. Final status of the Abyei area is not yet determined. A dispute exists between the Governments of Argentina and the United Kingdom of Great Britain and Northern Ireland concerning sovereignty over the Falkland Islands (Malvinas).  
 Contact: [hqs@wfp.org](mailto:hqs@wfp.org) Website: [www.wfp.org](http://www.wfp.org) Prepared by: **HQ, Emergency GIS Unit**  
 Data sources: UNmap, WFP, WHO © World Food Programme 2020

## WFP Immediate Funding Requirements

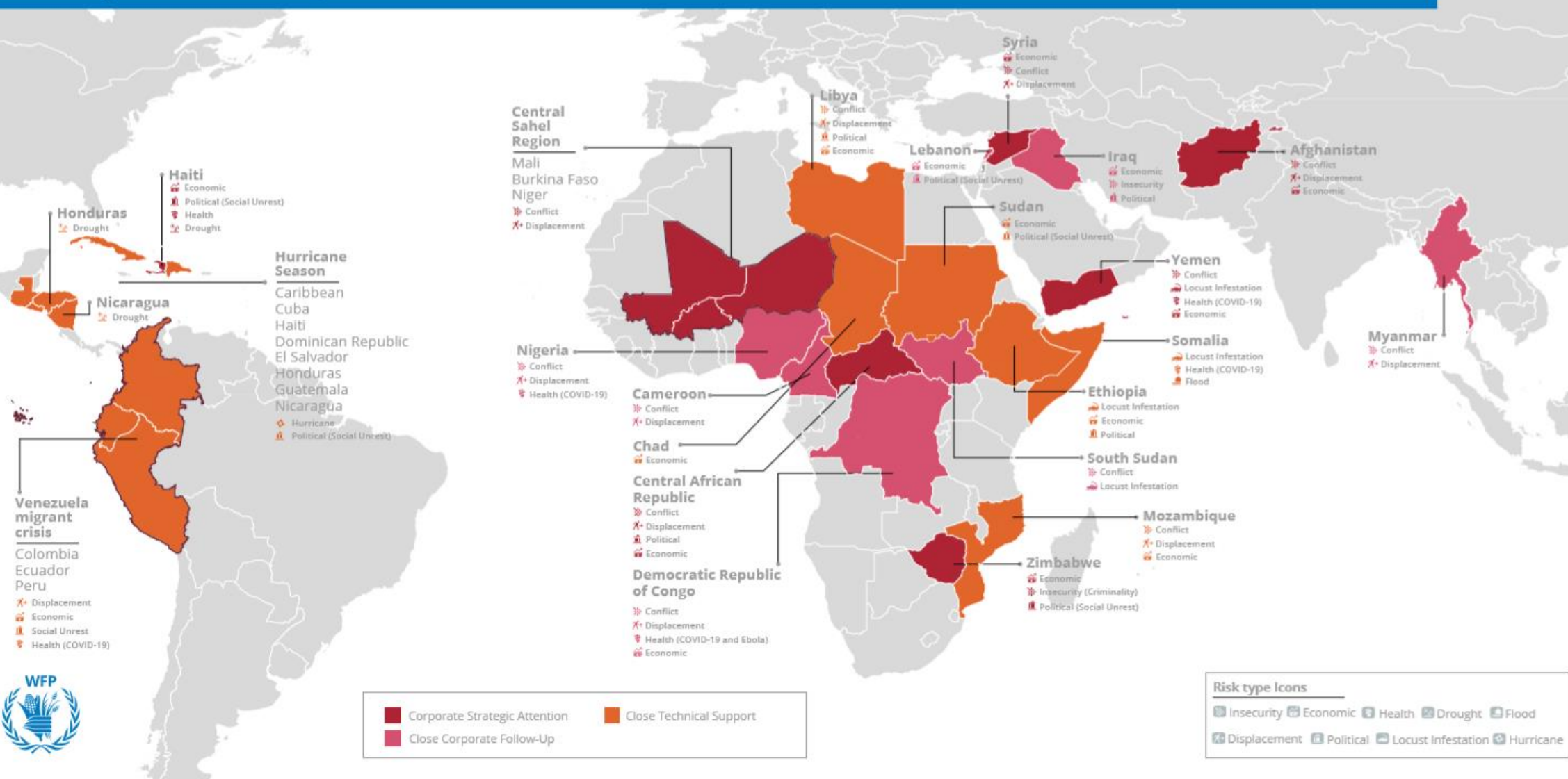


### USD 4.9 billion appeal

- **WFP's total revised budget for the next six months is USD 7.9 billion**
  - This takes into account the re-prioritization of activities and carry over
  - 62% of this is required through end 2020
- Only one-third of WFP's 83 operations are funded at 50 percent or more
- With current trends, the **IRA will reach critical levels by end July.**

# Top Countries of Concern: Corporate Alert System June 2020

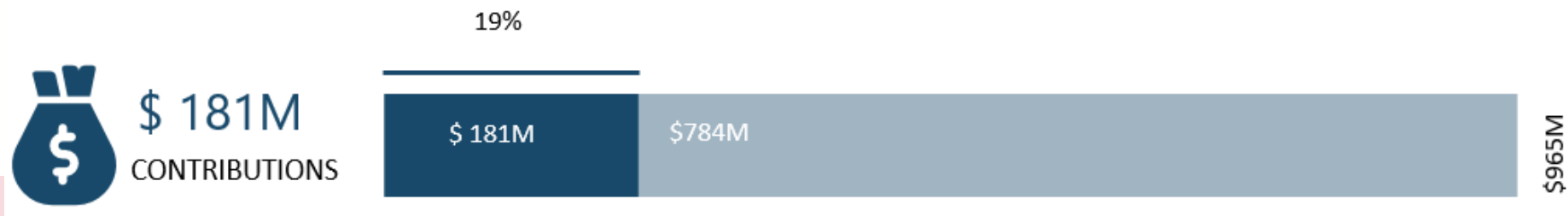
Outlook (June-December 2020)





## Global Service Provision

- **Health and Humanitarian Cargo Transport** : 24,497m<sup>3</sup> of COVID-19 items to 138 countries, on behalf of 38 organizations
- **Passenger Services**: 5,267 passengers transported to 50 destinations, on behalf of 174 different organizations
- **MEDEVACS**: 18 MEDEVACs carried out by WFP so far, field hospitals finalized in Addis Ababa and Accra, WFP has access to a global network of contracted air ambulances
- **Coordination**: The Supply Chain Inter-Agency Coordination Cell (SCICC) provides a 'line of sight' on all supply chain requirements, ensuring COVID-19 needs are prioritized within the wider humanitarian community



WFP requested USD 965 million to sustain these services throughout 2020

Only USD 181 million has been confirmed

**This will only cover costs until the end of July**





### **Way forward on Funding our Operations**

- WFP expresses its sincere gratitude to the member states who helped to fund our COVID-19 response efforts by anticipating or stepping up their contributions.
- WFP is continuously working towards broadening the funding base for our response by strengthening for example our engagement with the IFIs and the SGs COVID-19 MPTF.
- Regardless severe challenges exist in funding the requests by partner governments / response in country offices with a smaller footprint (especially in MIC).
- WFP would therefore kindly ask for the support of the member states to raise awareness, that we are still looking at significant funding shortfalls to cover the overall needs mentioned before.
- WFP will send an ED donor letter based on the Update of the Global Ask and will closely follow up with donor capitals and IFIs.
- The funding of WFPs operations for 2021 is worrying as needs are likely to increase and many donor economies are severely affected by COVID-19.