



Induction Session Resource Management Department

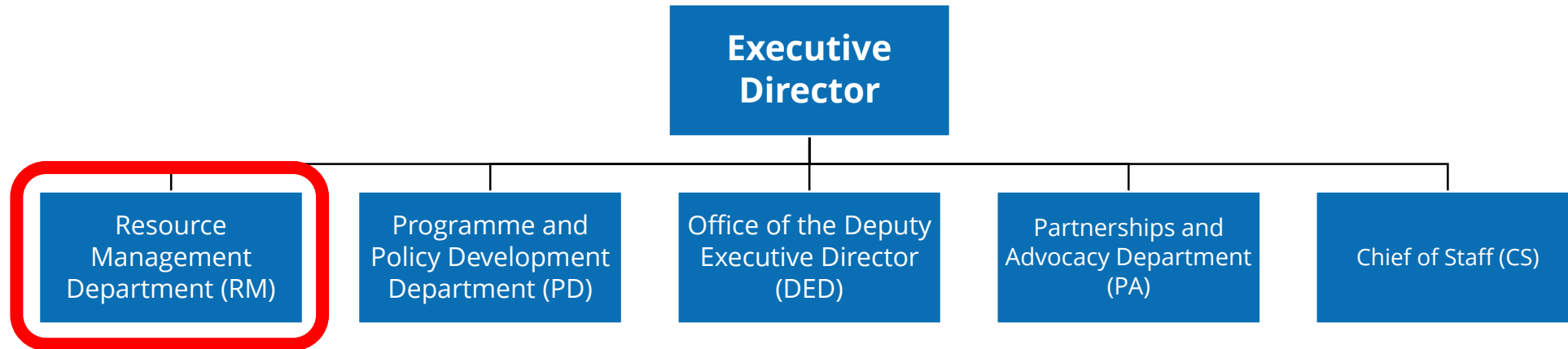
EXECUTIVE BOARD

23 January 2020



Supporting and enabling operations by leading performance management and safeguarding resources to improve the lives of the people we serve

WHERE DO WE FIT



OUR TEAM



MANOJ JUNEJA
Assistant Executive Director
for RM and CFO



BETTY KA
Budget & Programming
(RMB/new CPP)*



JANE PEARCE
Performance Management & Reporting
(RMP/new CPP)*



ROBERT VAN DER ZEE
Corporate Finance (FIN)*



PHILIP WARD
Management Services (MSD)



JONATHAN HOWITT
Enterprise Risk
Management (EMR)*



SERGIO ARENA
Staff Wellness (WEL)



JOYCE LUMA
Human Resources (HRM)

*In August 2019, the RM Department initiated a review of its Chief Financial Officer functions that resulted in some organizational changes in 2020. More details will be provided during the RM Seminar on 3 February.

WHAT WE DO

Three Key Thematic Areas



**Supporting
and Enabling
Operations**

**Connecting
Resources and
Results**

**Safeguarding
Our Resources**

WHAT WE DO

Three Key Thematic Areas



1

SUPPORTING & ENABLING OPERATIONS

Looking after our people & ensuring access

HUMAN RESOURCES



Recruitment at WFP

STAFF WELLNESS



Vaccination Campaign in South Sudan

FACILITIES & ACCOMMODATION



Facilities upgrades and development of booking app

ENGINEERING



Improving access with sustainable infrastructure



Joyce Luma

Human Resources (HRM)



Sergio Arena

Staff Wellness (WEL)



Philip Ward

Management Services (MSD)

1

SUPPORTING & ENABLING OPERATIONS

Innovative Financial Tools



Betty Ka

Corporate
Planning and
Performance
(RMB/new CPP)



**Robert
van der Zee**

Corporate
Finance (FIN)



Internal Project Lending



Immediate Response
Account



Global Commodity
Management Facility



Cash-Based Transfers

WHAT WE DO

Three Key Thematic Areas



**Supporting
and Enabling
Operations**

**Connecting
Resources and Results**

**Safeguarding
Our Resources**

CONNECTING RESOURCES AND RESULTS

2

Did you know that WFP has a committee to advise management on the use of multilateral resources?

It is the Strategic Resource Allocation Committee (SRAC)



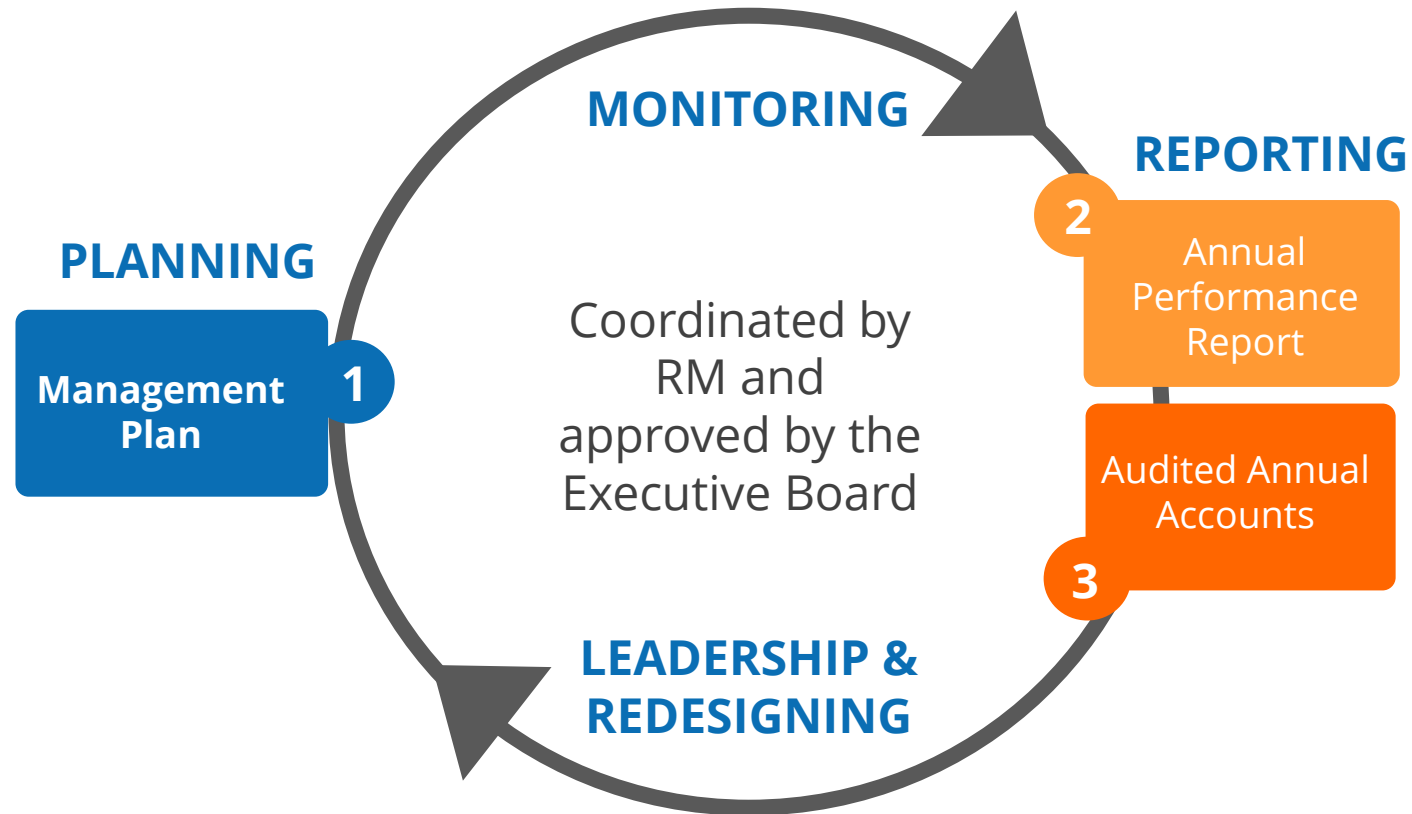
CONNECTING RESOURCES AND RESULTS

The three Key RM-related EB Documents



Other Planning Documents:

- Country Strategic Plans*
- Country Operations Management Plan**



Other Reporting Documents:

- Annual Country Reports**
- Thematic Reports**

* Corporate document reviewed and approved by the Executive Board
** Also made available to EB Membership and Donors, but not approved by Membership

LINKING RESOURCES TO RESULTS

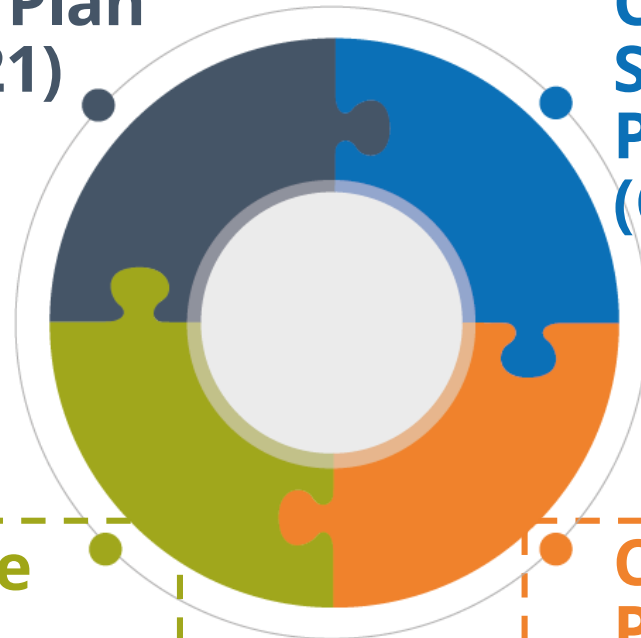
Integrated Road Map (IRM)

2

WFP's approach to achieving Zero Hunger through the IRM

Strategic Plan
(2017-2021)

Country
Strategic
Plans
(CSP)



Corporate
Results
Framework

Country
Portfolio
Budget

ROAD TO COMPLETION

WHERE WE ARE

- As of 1 January, all Country Offices are operating under a **Board-approved CSP** or **ICSP**.
- **Delegations of authority** will be presented to the Board at the 2020 first regular session for approval from 1 March.
- In 2019, 'first wave' Country Offices were supported with their **CSP mid-term reviews**.
- In Q1 2020, RMP/new CPP will conclude an **internal mid-term review** of the Corporate Results Framework to inform the next CRF 2022.

WHAT WE DO

Three Key Thematic Areas



**Supporting
& Enabling
Operations**



**Connecting
Resources and
Results**



**Safeguarding
Our Resources**

3

SAFEGUARDING OUR RESOURCES

Strengthening assurance and controls



ENTERPRISE RISK MANAGEMENT & INTERNAL CONTROLS



GLOBAL ASSET MANAGEMENT



FINANCIAL RISK MANAGEMENT & CASH MANAGEMENT

PROCESS EFFICIENCY LENS



USD 15.7 M

Savings on CO FX transactions performed by HQ in 2019



~1800+ staff

Completed the Three Lines of Defense training launched in Q4 2019



USD 5.3 M

Allocated to the CCI Systems Integration and IT-Enabled Efficiencies



3

SAFEGUARDING OUR RESOURCES

Risk Management

OVERSIGHT FRAMEWORK

EMBEDDING RISK MANAGEMENT

STATEMENT OF INTERNAL CONTROL

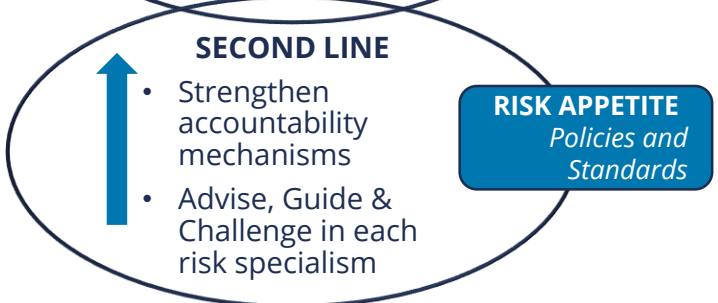
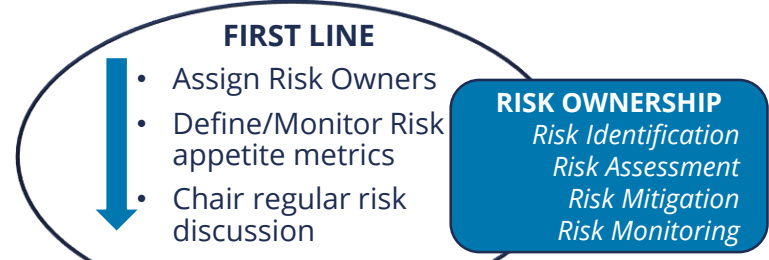
ANTI-FRAUD ANTI-CORRUPTION

ERM Framework



Roles and Responsibilities

Regional/Country Directors



Functional Heads



Treading lightly on the earth

A sound environmental policy and systems that consistently manage environmental risks and improve environmental outcomes are better equipping WFP to help achieve the SDGs and end hunger.

KEY RM DATES IN 2020

- **3 February** – Resource Management Seminar
- **6-7 February** – FAO Finance Committee on WFP matters
- **24-25 February** – First Regular Session of the Executive Board
- **8 May** – Beyond the Annual Performance Report Series
- **27 May** – Resource Management Seminar on EB.A/2020
- **27 May** – Briefing on the WFP Management Plan (2021–2023)
- **28 May** – Briefing on the 2019 Annual Performance Report
- **3-5 June** – FAO Finance Committee on WFP matters
- **29 June-3 July** – Annual Session of the Executive Board

A young girl with dark hair, wearing a white shirt with a lace collar, is seated at a table eating a meal. She is looking towards the camera with a slight smile. In front of her is a white plate with rice, yellow curry, and a slice of fried fish. Another child is visible in the background, also eating. The image has a dark, moody filter.

THANK YOU
