



World Food Programme



DRC – WFP/Griff Trappe

Executive Board

SAVING
LIVES
CHANGING
LIVES

Regional Bureau Southern Africa

EB.1/2019

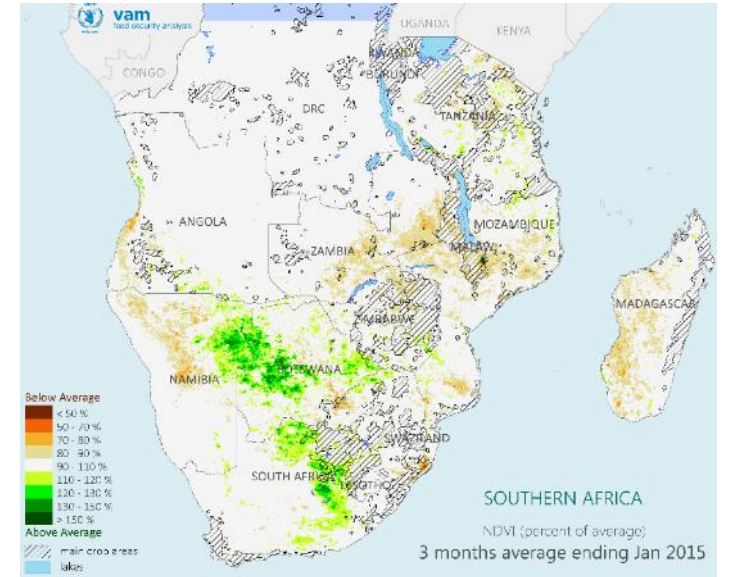
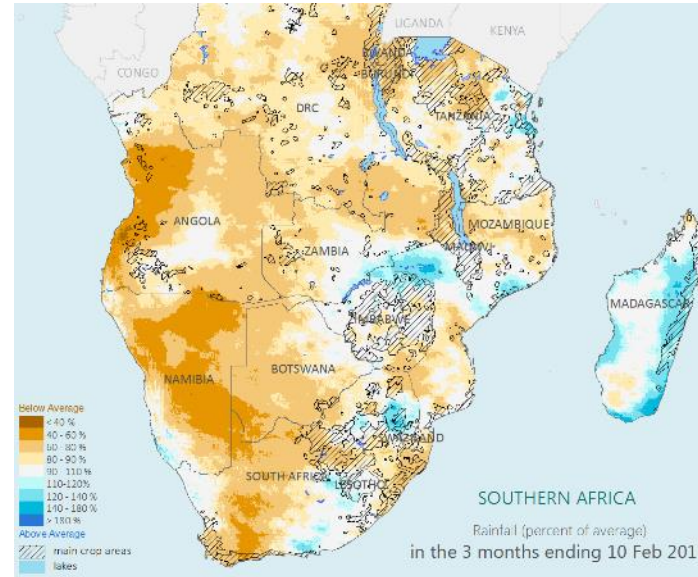
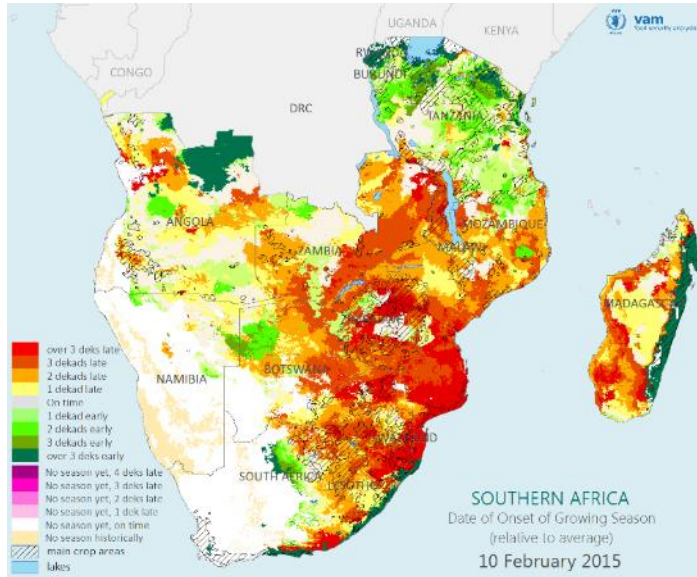
Drought Outlook

Rainfall delay

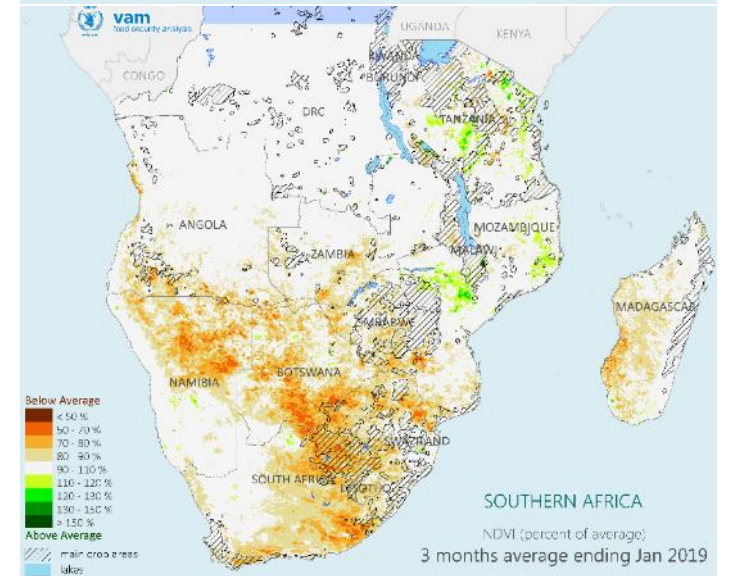
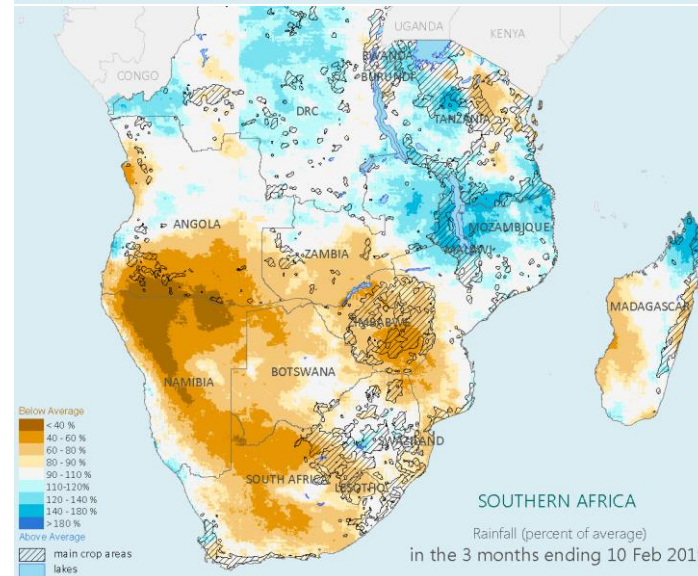
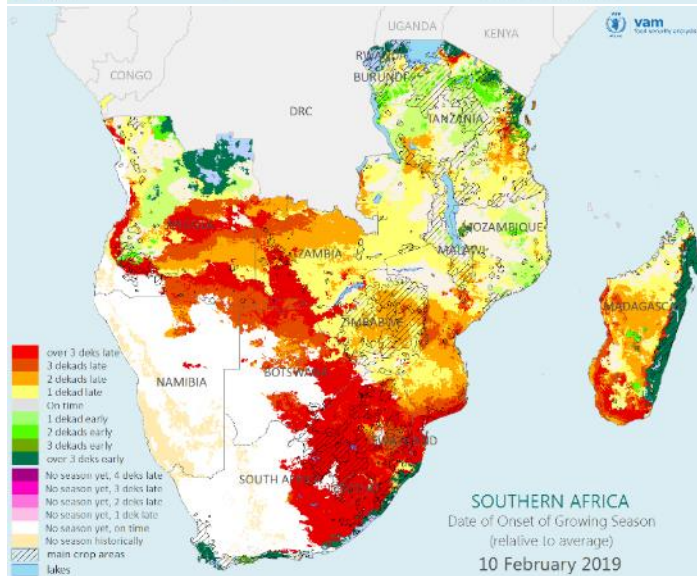
Rainfall

Vegetation

2015



2019

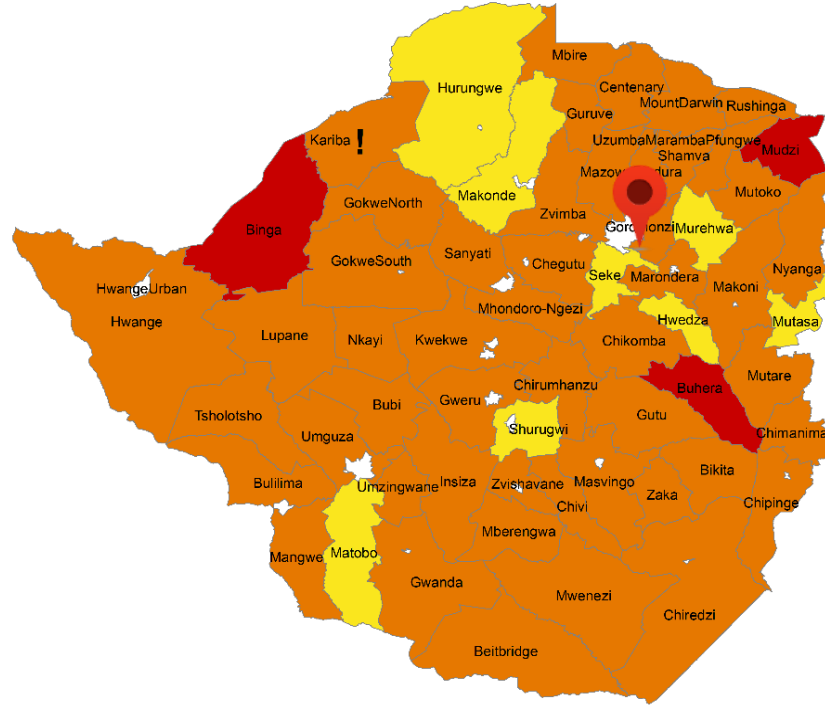
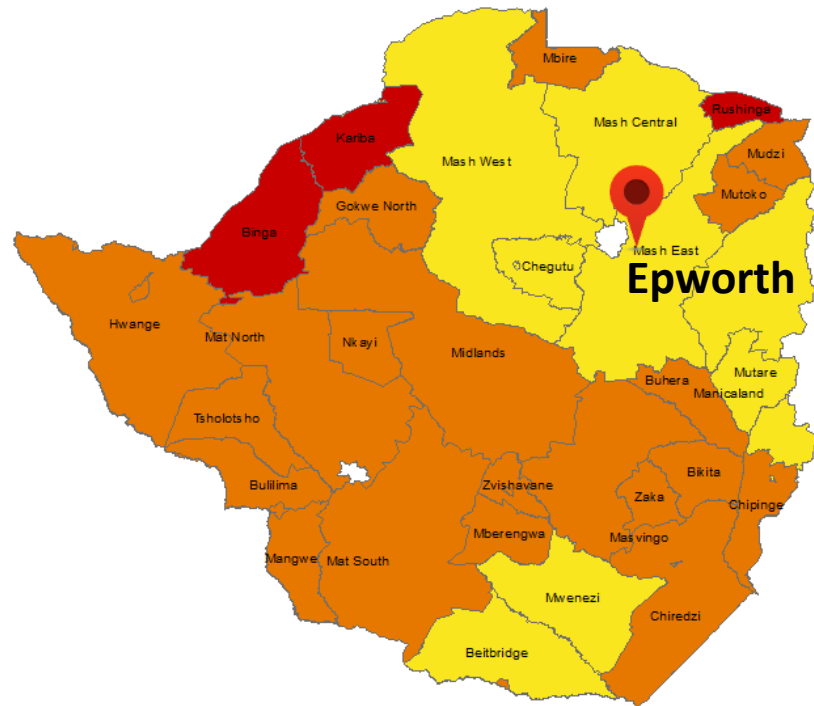


Food Insecurity - Zimbabwe

Acute Food Insecurity Analysis May 2018

Acute Food Insecurity Analysis February - May 2019

Chronic Food Insecurity Analysis 2015-2020



5 Severity Phases



4 Severity Levels



! Phase classification would likely be worse without current or programmed humanitarian assistance

Early Response

N O W

| | | | | | | | | | | | | | | | |
|--|------------------------|------------------------|---------|-------------|-----------|--|---------|-----|---|-----|-----|-----|-----|-----|-----|
| Month | | JAN | FEB | MAR | APR | MAY | JUN | JUL | AUG | SEP | OCT | NOV | DEC | JAN | FEB |
| Seasonal Calendar | Rainy Season | | | Harvest | | | | | Lean Season | | | | | | |
| Current emergency response scenario | | | | Assessments | IPC/V AC* | Planning | Appeals | | Lean Season Response (GFD) | | | | | | |
| Early response scenario | Early Warning Analysis | Planning & Assessments | Appeals | | IPC/VAC* | Early Response (conditional & unconditional) | | | Lean Season Response (scale-up unconditional & conditional) | | | | | | |

*N.B Mozambique & Madagascar IPC results are available in March & October.

DRC L3 Scale-Up

2017

Kasai

2018

Kasai, Tanganyika, Ituri, North Kivu, South Kivu



400,000 *People reached (GFD)*

4,581,000 *People reached (GFD)*



44,200 *Children & PLW reached (NUT)*

567,700 *Children & PLW reached (NUT)*



7,238 *Total Tonnage distributed (MT)*

68,340 *Total Tonnage distributed (MT)*



63 *Distribution Sites*

856 *Distribution Sites*



10 *NGO Partners*

27 *NGO Partners*



25 *surge support deployed in 2017*

73 *surge support deployed as at **December 2018***



53 *trucks deployed from Uganda and Ghana*

109 *trucks deployed from Uganda and Ghana*

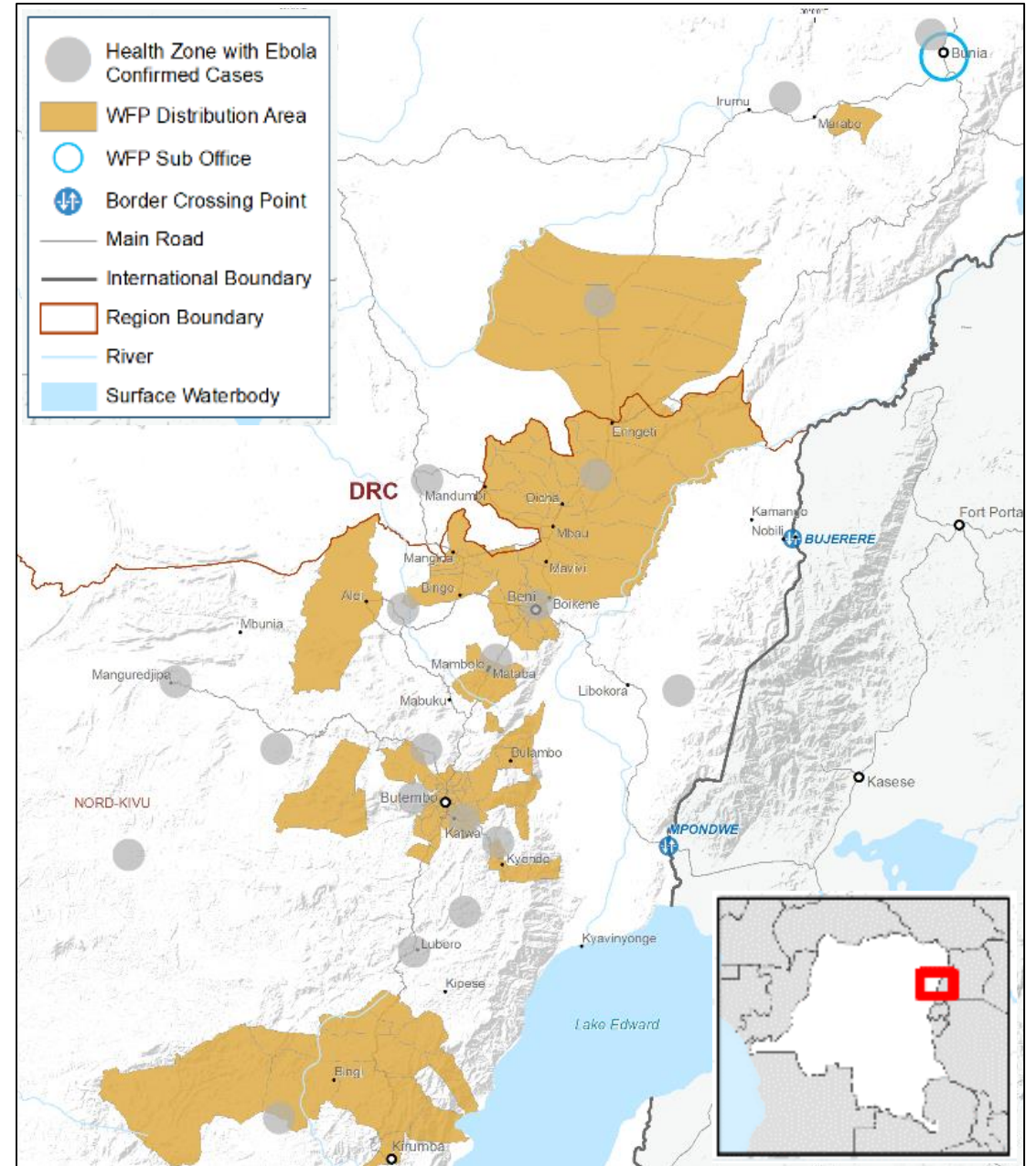
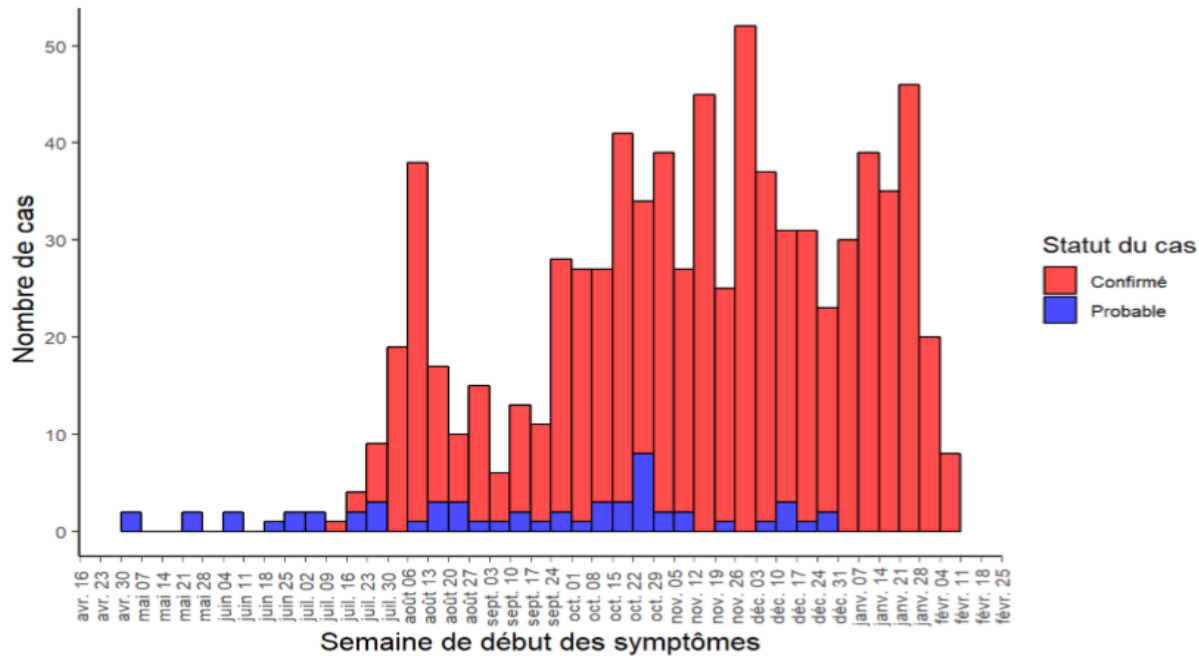


USD140.7M *Six-month Net Funding Requirements (Feb 2019 – July 2019)*

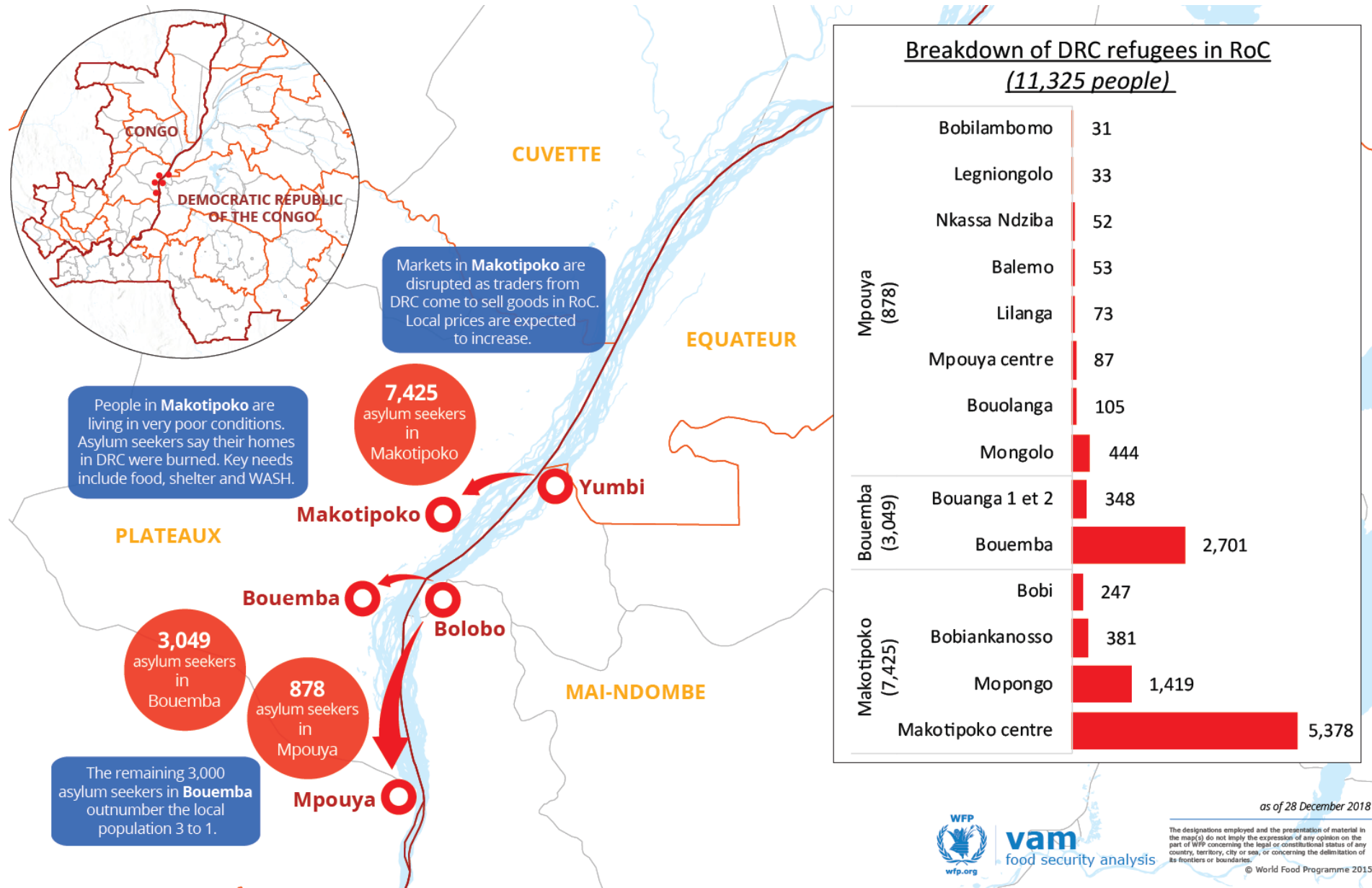
*Covers entire duration of emergency response, from September 2017.

DRC - Ebola

- **Total cases reported: 840** (as of 18/02)
Confirmed cases: 775
Probable cases: 65
- **Total deaths reported: 479** (as of 18/02)
- **Ebola affected people assisted: 177,000** (as of 18/02)
- **UNHAS transported: 8,916 passengers and 136.53MT of cargo** (as of 15/02)



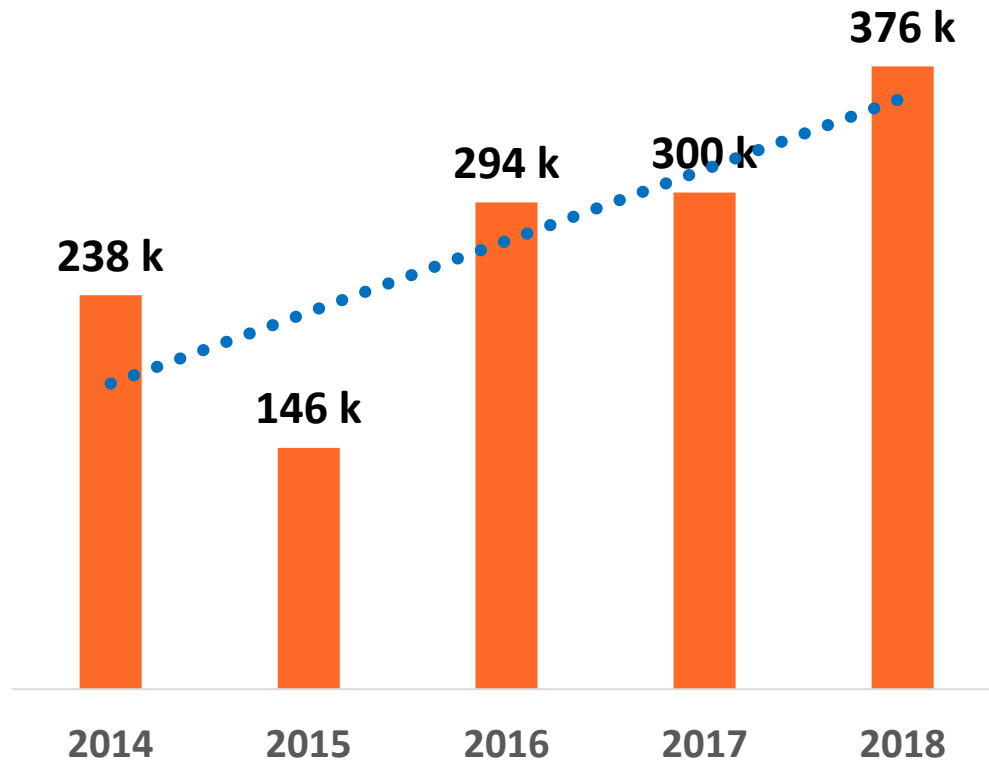
New DRC displacement



Food procured from Southern Africa

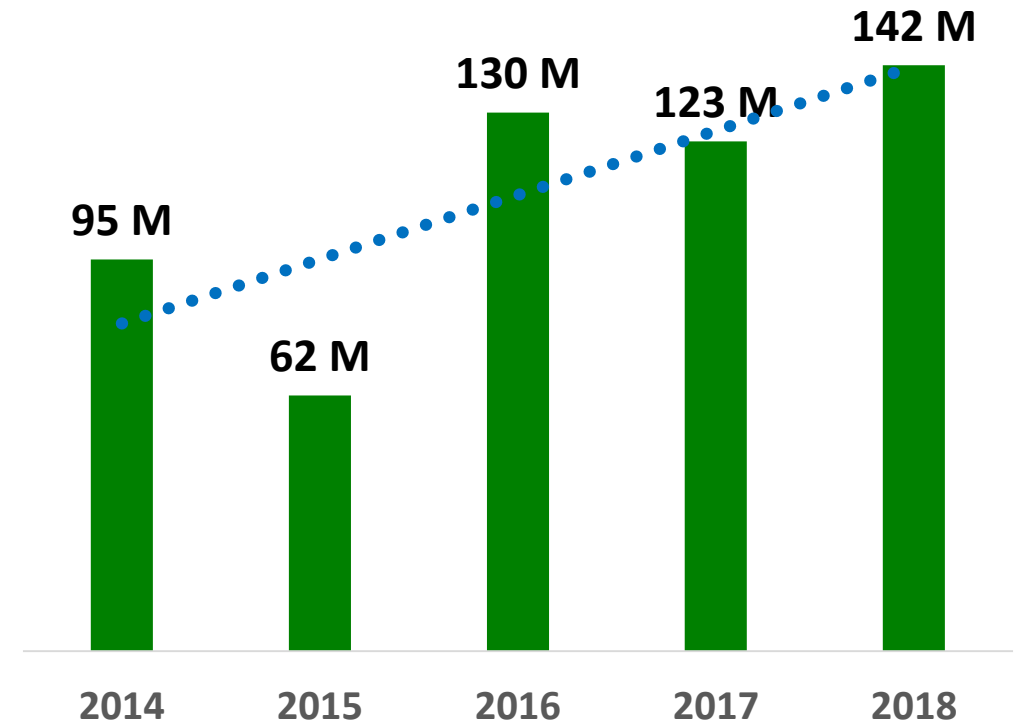
Quantity and Value procured from Southern Africa Region from 2014-2018

Quantity (MT)



1,351,582 MT

Value (USD)



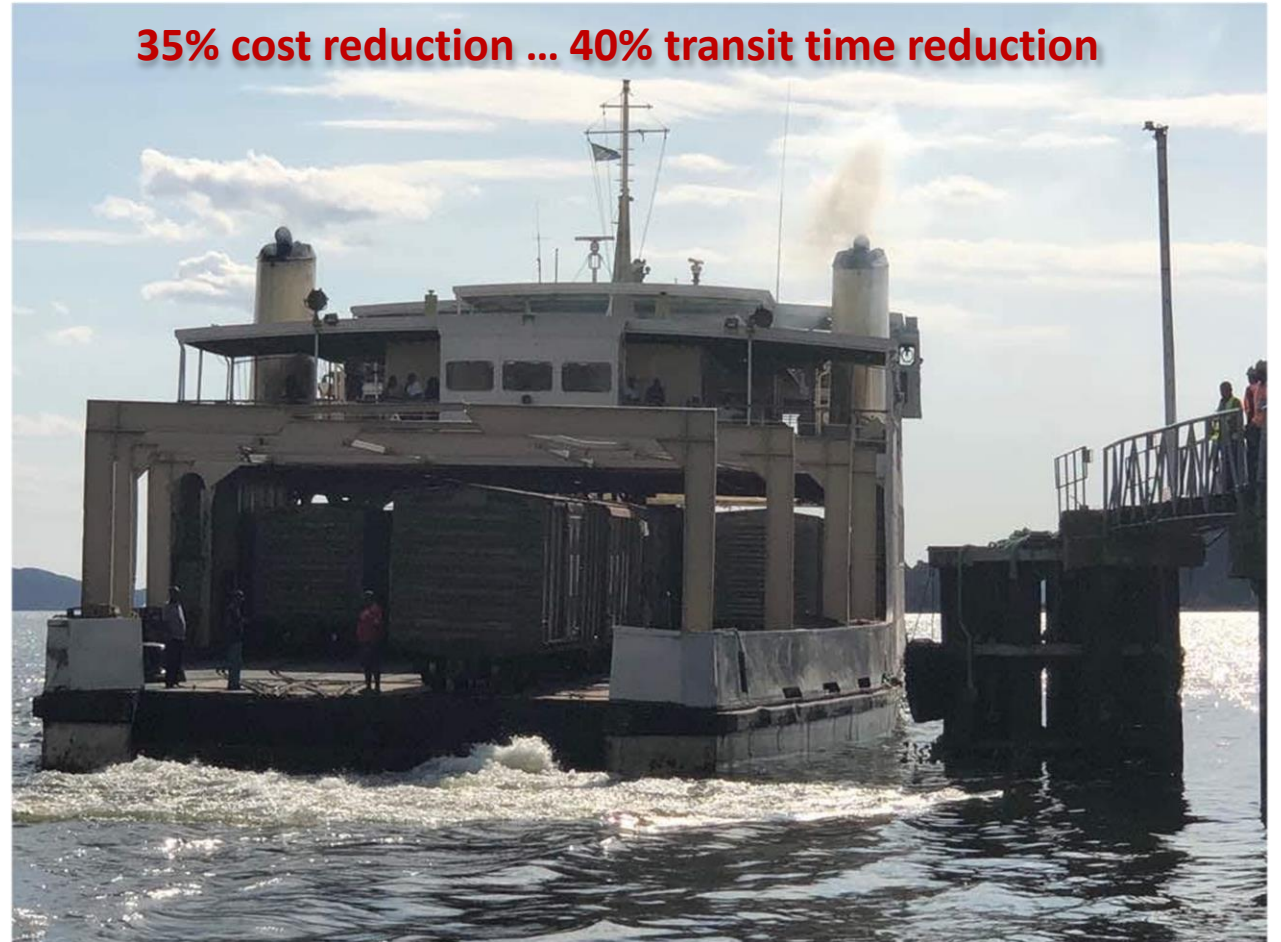
USD 550,249,694

Closing the Gap

- Support to Railways 2017-2018 (**USD 2.5 million** food transportation)
- In 2018, **23%** cross-border food transported by Railways through Lake Victoria
- **38** block trains crossed successfully
- Support to Marine Services: GOT decided to launch a new vessel with **5000 tons** capacity
- Improved coordination between **Uganda and Tanzania** Railways and Marines Services

Opening of the **Lake Victoria Corridor** (Rail-Lake-Rail)

35% cost reduction ... 40% transit time reduction





Thank you