

**WFP**

**United Nations  
World Food  
Programme**

**Latin America & the Caribbean**

***FINANCIAL, FUEL AND FOOD CRISES IN LATIN  
AMERICA AND THE CARIBBEAN***

***WOMEN AND CHILDREN FIRST***

*Second Regular Session of the Executive Board 27 to 30 Octobe*







United Nations  
**World Food  
Programme**

*The way forward to face the Perfect Storm in Latin America and the Caribbean*

**I. HARD WON GAINS FIGHTING HUNGER IN LATIN AMERICA AND THE CARIBBEAN AT RISK**

**II. DROPS IN PRICES OF CEREALS AND OIL STILL NOT ENOUGH**

**III. COMBINED CRISES PUSHING MILLIONS BELOW POVERTY IN LAC & CA**

**IV. LOMMING RECESION POTENTIALLY TO AFFECT SOCIAL SAFETY NETS (REMITTANCES)**

**V. CLIMATE CHANGE WORSENING THE SITUATION OF THE MOST VULNERABLE**

**VI. HELPING GOVERNMENTS REDUCE CHRONIC HUNGER AND UNDERNUTRITION**

**VII. ADVOCATING ON BEHALF OF THE MOST VULNERABLE. WOMEN AND CHILDREN FIRST**

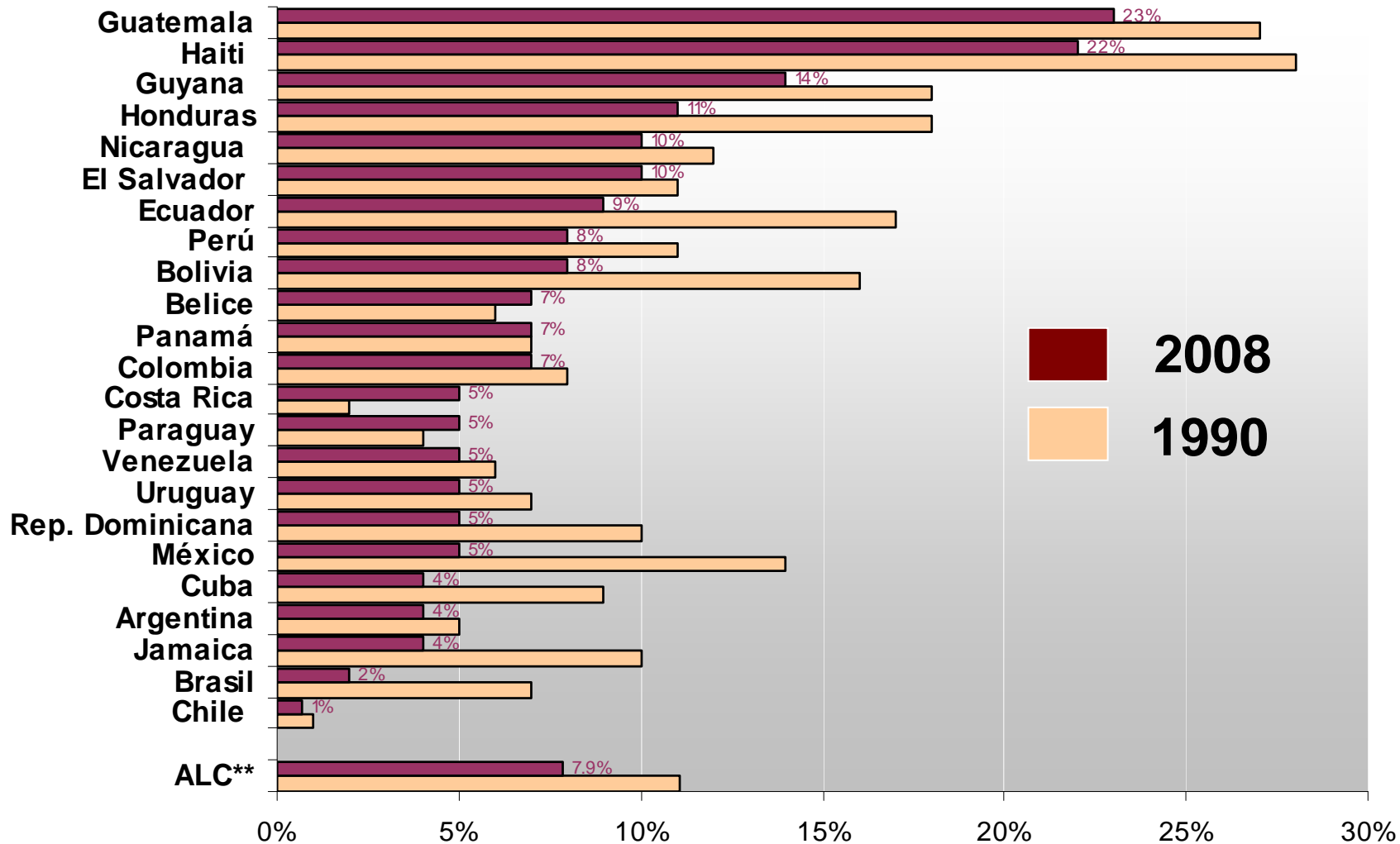
**VIII. WHAT WFP LAC NEEDS TO HELP TACKLE THE CRISES**



United Nations  
World Food  
Programme

# I. HARD-WON GAINS FIGHTING HUNGER IN LATIN AMERICA AND THE CARIBBEAN AT RISK

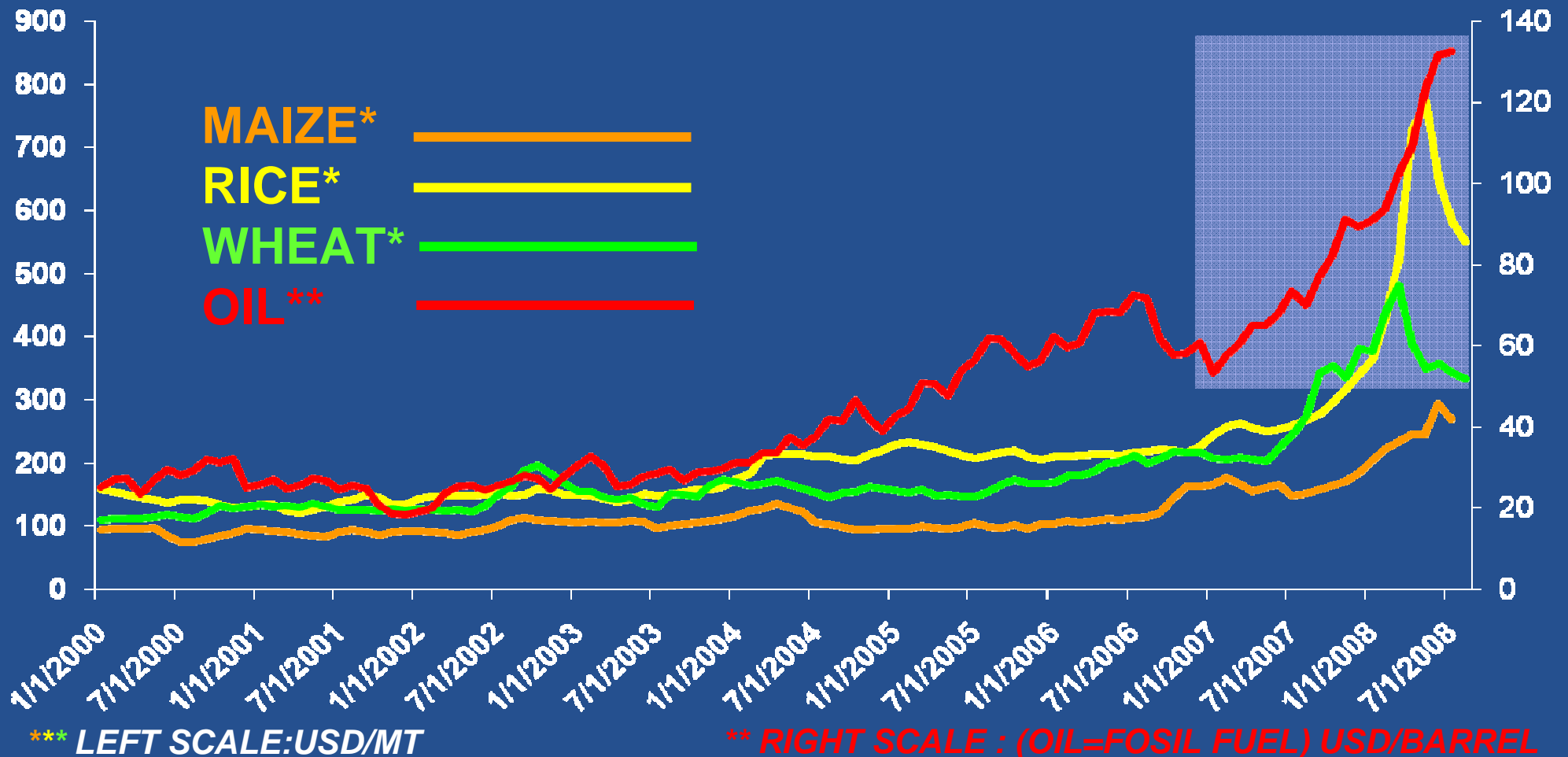
Prevalence of **Global malnutrition** in children under 5  
Progress between 1990 and 2008 \*





United Nations  
World Food  
Programme

## II. DROPS IN PRICES OF CEREALS AND OIL STILL NOT ENOUGH





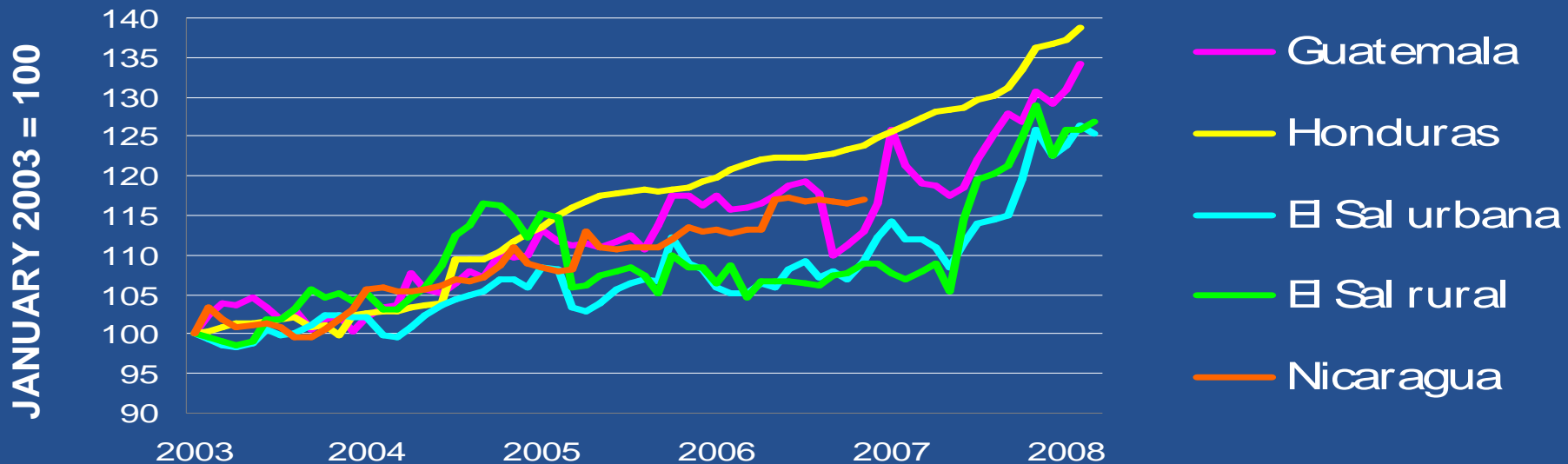


United Nations  
**World Food Programme**

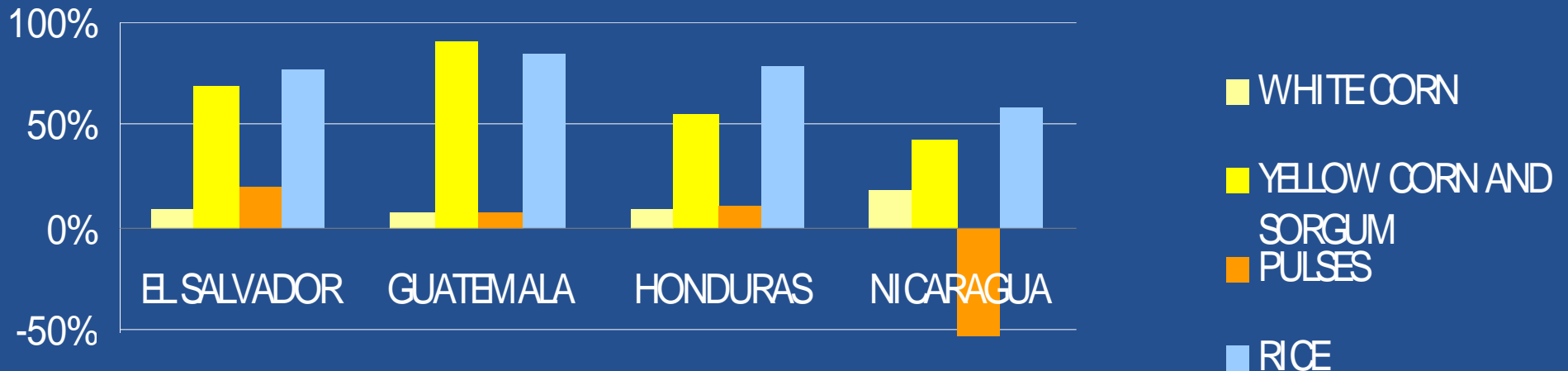
### III. COMBINED CRISES PUSHING MILLIONS BELOW POVERTY IN LAC & CA

WFP'S STUDY "RISING PRICES, MARKETS AND FOOD AND NUTRITIONAL INSECURITY IN CENTRAL AMERICA",

#### BASIC FOOD BASKET COST INDEX



#### NET IMPORT DEPENDENCY AS A PERCENTAGE OF COMSUMPTION

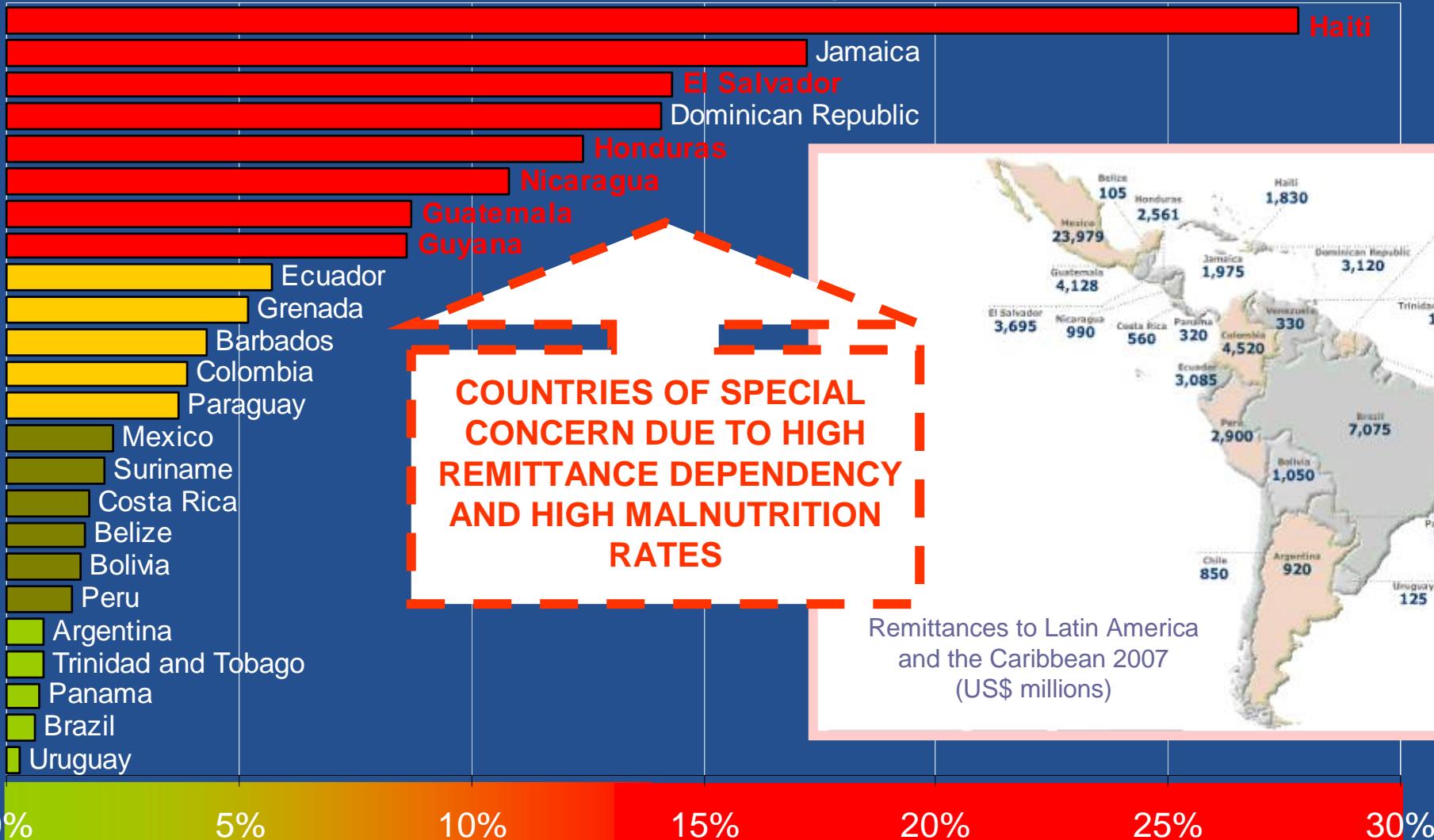




United Nations  
World Food Programme

# IV. LOMMING RECESSION POTENTIALLY TO AFFECT EXITING SOCIAL SAFETY NETS (REMITTANCES)

Remittances as a percentage of the national GDP



**COUNTRIES OF SPECIAL CONCERN DUE TO HIGH REMITTANCE DEPENDENCY AND HIGH MALNUTRITION RATES**



Remittances to Latin America and the Caribbean 2007 (US\$ millions)

# V. CLIMATE CHANGE WORSENING THE SITUATION OF THE MOST VULNERABLE

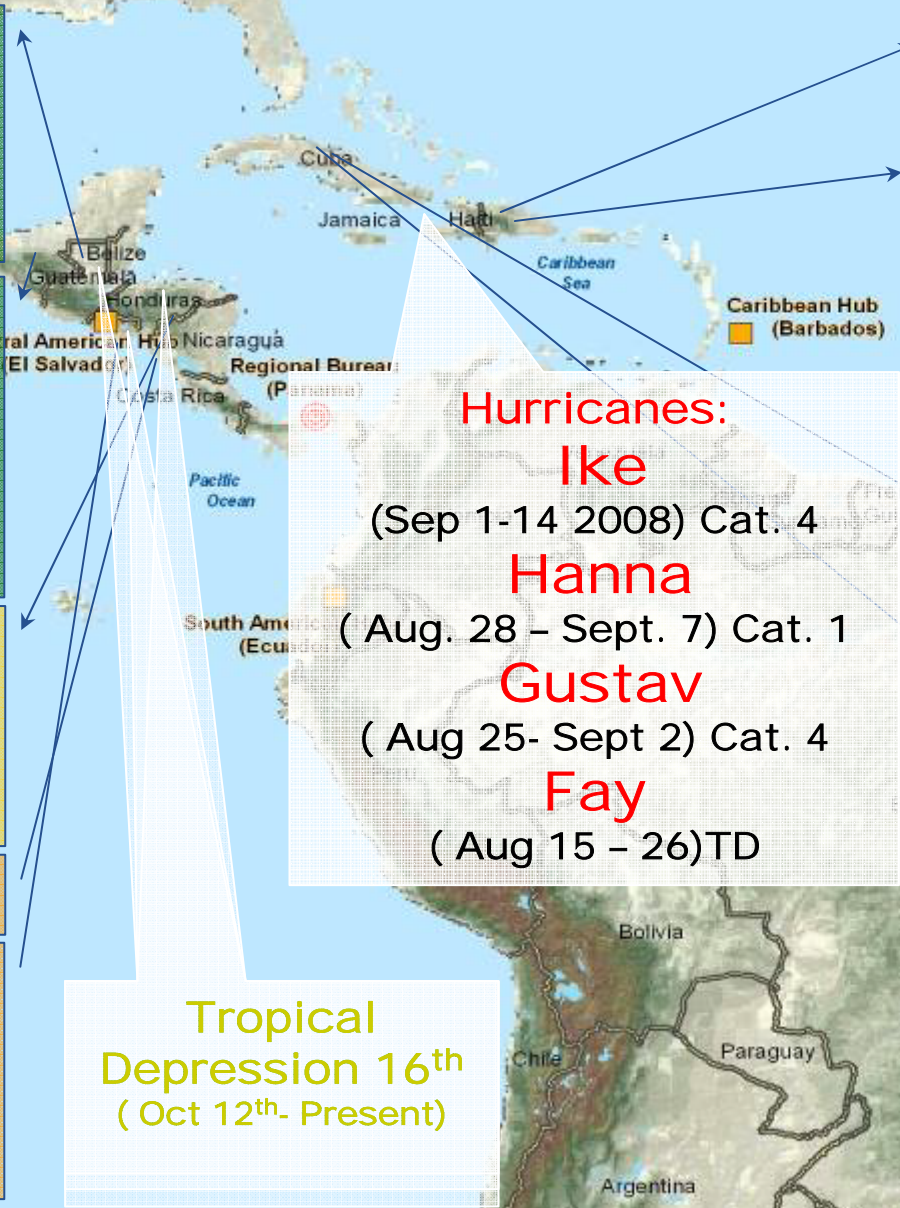
**Beneficiaries:**  
 \*5,070 people living in shelters and already assisted for 10-days  
 \*2,560 to be assisted and since today living in shelters  
 \* 2,750 families (14,300 people) affected by rainfall and landslides

**Assistance:**  
 \* 60-days assistance by the distribution of some 625 MT  
 \* transportation of food rations  
 \*monitoring all reports that are being issued by the CONRED and is in permanent communication with counterparts.  
 \*Guatemala CO is requesting for an Immediate Response Account (IRA)

**Assistance:**  
 \*monitoring and carrying out rapid assessments of damages  
 \*Damage assessment and food assistance to people living in shelters  
 \*50 MT had been distributed during the first two days

**Beneficiaries:**  
 \*577 Families

**Assistance:**  
 \*leading and coordinating the UNETE  
 \*continuously monitoring the situation  
 \*8 MT of food to assist 577 families affected by flooding  
 \*The affected families received family rations over a period of 5 days



**Beneficiaries:**  
 \*Direct beneficiaries: 525,944

**Assistance:**  
 \*Technical Assistance: Emergency Food Security Assessment  
 \*Distributed rations: 944,229  
 \*Tonnage: 5,263  
 \* IR EMOP( Sept. 9, 2008 – Dic. 3, 2008)  
 \* EMOP (Sept. 9, 2008 - Mar. 8, 2009)

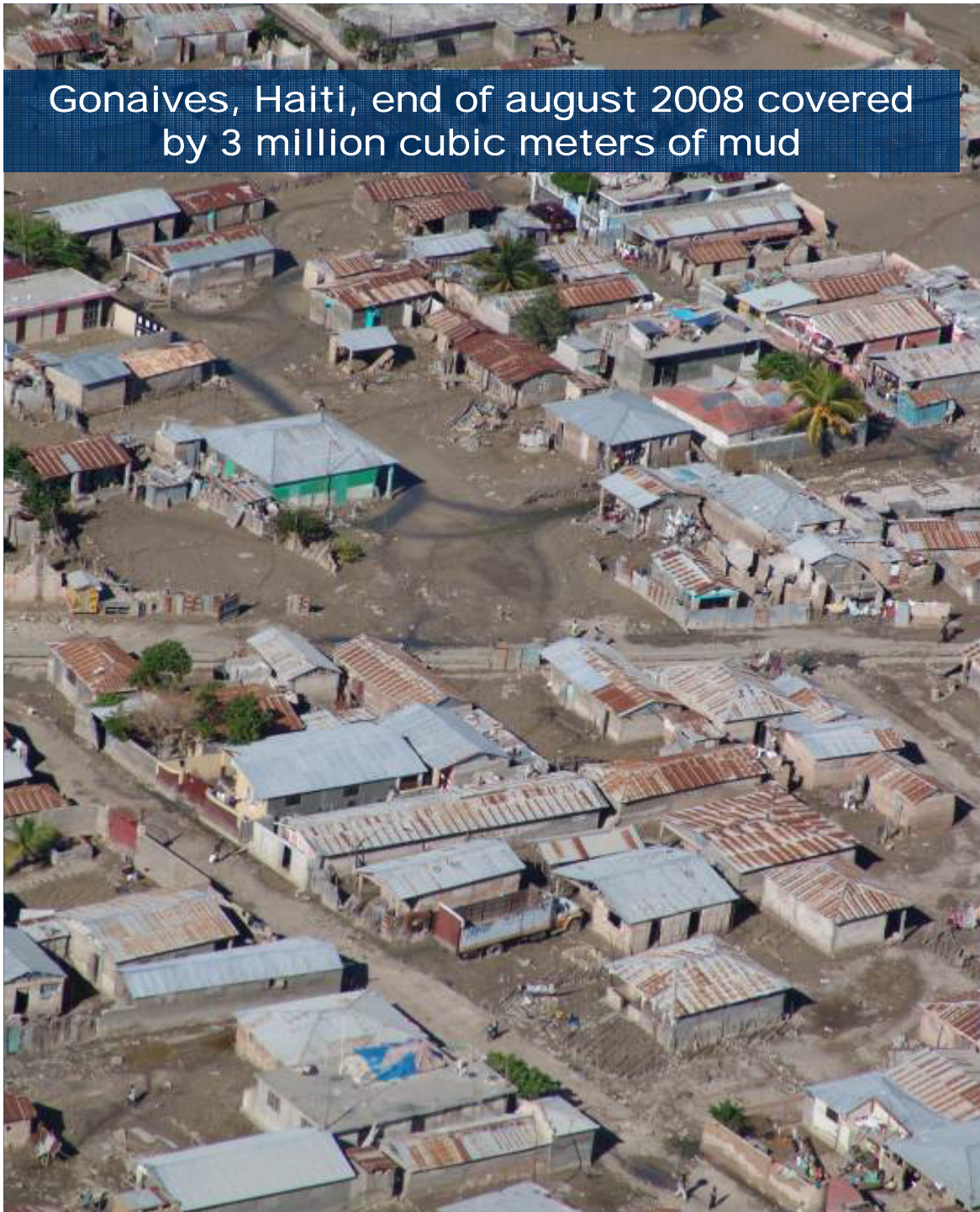
**Beneficiaries:**  
 \*86,000 beneficiaries (planned)  
 \*1,078,000 beneficiaries (planned)

**Assistance:**  
 \* IR-EMOP (Sept. 08-Oct08) 86,000 beneficiaries (planned) and 96 MT  
 \* EMOP (Oct 08 - Mar 09) 1,078,000 beneficiaries (planned) and 3566 MT

- Guatemala
- Honduras
- El Salvador
- Haiti
- Cuba



Gonaives, Haiti, end of august 2008 covered by 3 million cubic meters of mud



Gonaives, Haiti, September 2008  
Over ¼ million people assisted





Gonaives, Haiti. September 2008. Logistic challenges and support provided by the US Navy

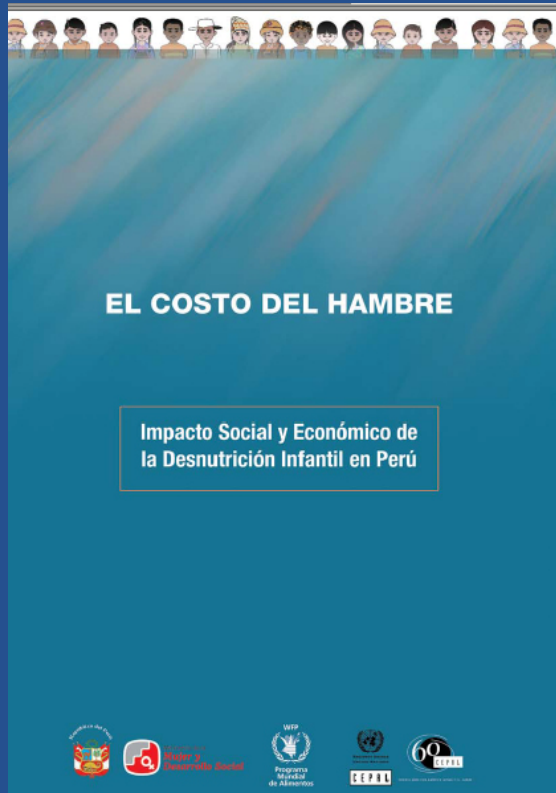




United Nations  
**World Food  
Programme**

## VI. HELPING GOVERNMENTS REDUCE CHRONIC HUNGER AND UNDERNUTRITION

July 2008 Ecuador  
WFP and the Government of Ecuador Inaugurates  
the Logistic Center of Humanitarian Assistance  
(CELAH)



September 2008 Peru  
Launching of the Cost of  
Hunger Study

October 2008 Spain  
WFP-SEGIB-Casa America Seminar  
in Madrid to discuss with the  
Spanish Cooperation the impact of  
high food prices in Latin America







United Nations  
World Food  
Programme

## VII. ADVOCATING ON BEHALF OF THE MOST VULNERABLE. WOMEN AND CHILDREN FIRST



August 2008  
WFP RD address to the Colombian Congress



September 2008  
WFP ED visit to flooded city of Gonaives,  
Haiti



September 2008  
EB members visit Honduras department of Choluteca  
(located in the Drought Corridor).

## VIII. WHAT WFP LAC NEEDS, TO HELP TACKLE THE CRISES



Project	Total Needs US\$	Total Shortfall US\$
BOLIVIA CP 10596.0	14,706,743	3,320,261
BOLIVIA EMOP 10616	13,419,465	10,655,298
COLOMBIA PRRO 10588.0	107,256,264	18,228,497
CUBA DEV 10032.0	24,226,074	20,491,507
CUBA DEV 10589.0	10,223,839	2,988,636
CUBA EMOP 10786.0	5,693,373	1,654,729
DOM. REP. EMOP 10714.0	3,959,497	2,661,868
ECUADOR PRRO 10443.0	8,512,615	2,908,792
ECUADOR EMOP 10558.0	558,807	558,584
ECUADOR EMOP 10742.0	3,171,513	778,817
GUATEMALA CP 10092.0	20,610,416	14,441,014
GUATEMALA PRRO 10457.0	27,490,030	10,571,910
HAITI DEV 10386.0	9,162,490	6,468,387
HAITI PRRO 10674.0	123,869,951	73,405,783
HAITI EMOP 10781.0	33,018,329	10,258,004
HONDURAS CP 10538.0	11,141,464	5,059,917
LAC DEV 10411.0	8,612,137	4,694,251
LAC DEV 10421.0	5,972,836	984,002
LAC PRRO 10444.0	40,230,002	8,589,315
NICARAGUA CP 10597.0	25,512,429	8,856,426
NICARAGUA EMOP 10700.0	10,220,825	9,260,601
PERU DEV 06240.0	20,233,537	14,345,940
PERU EMOP 10691.0	9,266,029	7,475,179
<b>Total USD</b>	<b>537,068,665</b>	<b>238,657,718</b>

**OR 44% OF THE TOTAL AMMOUT NEEDED**



United Nations  
**World Food  
Programme**

Latin America & the Caribbean

**Gracias!**

