

EMERGENCY PREPAREDNESS





Preparedness

Anticipating Events



Saving Time

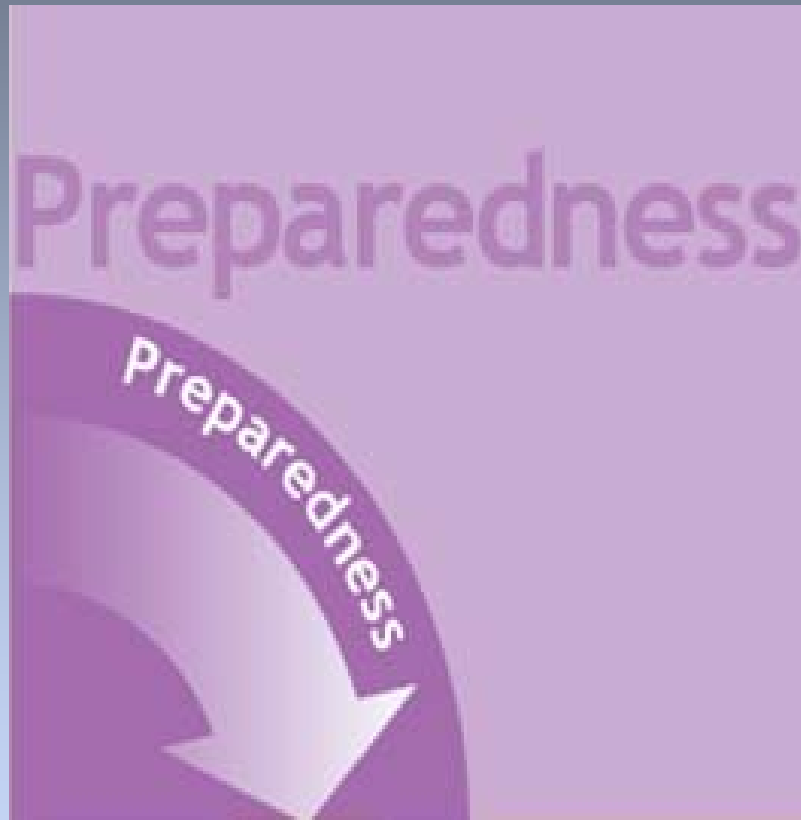


The Emergency Cycle





The Emergency Cycle



**Actions Arrangements
Procedures**

**To Anticipate
Events**

**For a Rapid, Effective &
Appropriate Response**



WFP Operational Response

EVENT

WFP Emergency Preparedness

**EARLY
WARNING**

**CONTINGENCY
PLANNING**

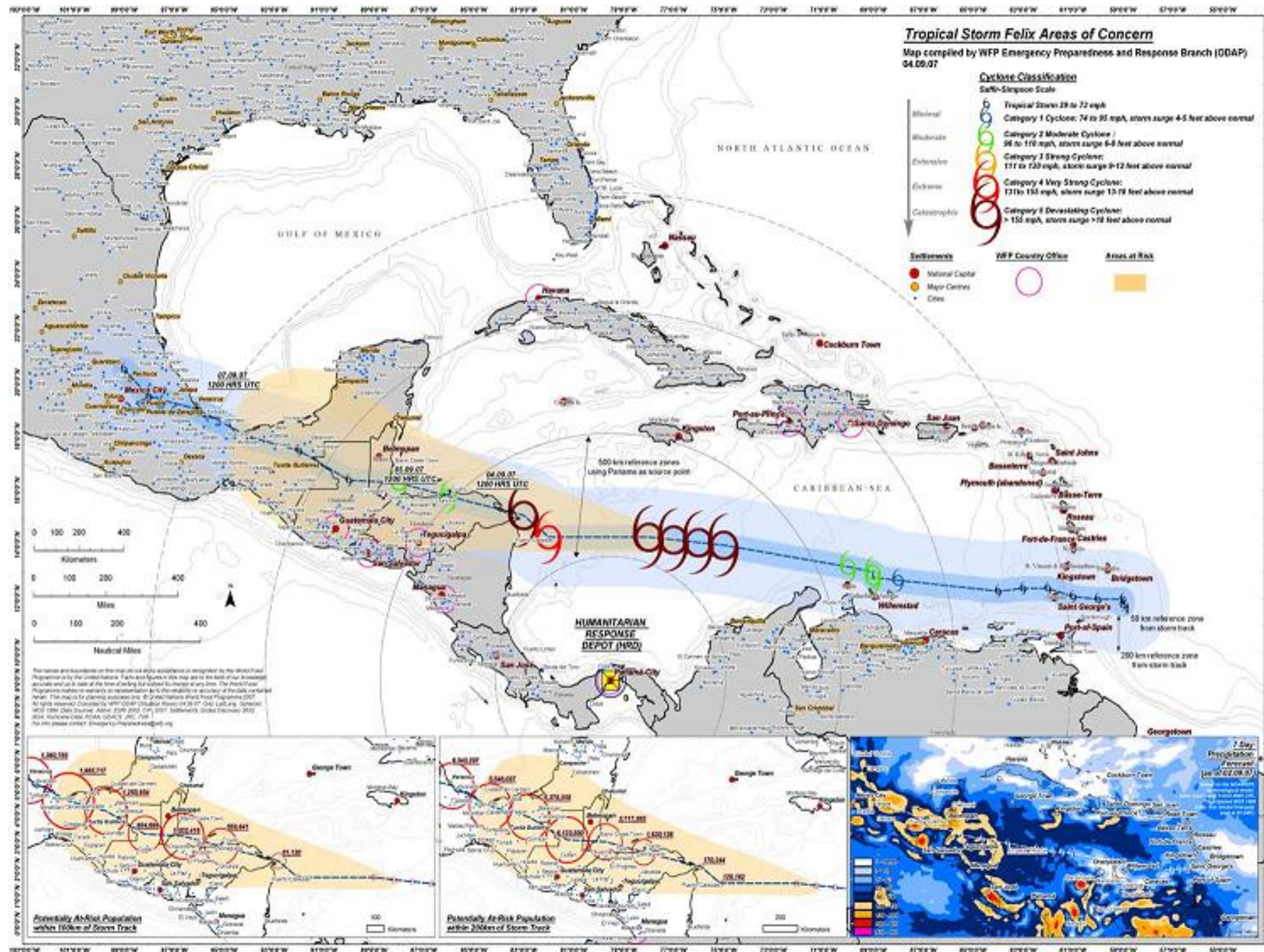
**GIS &
TECHNICAL
KNOWLEDGE**

**DECENTRALIZED
& STAND BY
CAPACITIES**

**IMPLEMENTATION
OF MITIGATION
PROGRAMMES**

ANALYSIS

ACTION



MOZAMBIQUE ZAMBEZI FLOOD MONITORING MUTARARA ANALYSIS



Data source information

Source for Vector Map Level 0 (VMS/PO) datasets was the United States National Imagery and Mapping Agency (1:5,000,000 - Accuracy 41-400 ft).

Toponymic information is based on the Geographical Names Database, containing official standard names approved by the United States Board on Geographic Names and maintained by the National Geospatial Intelligence Agency. More information is available at the Products and Services link at www.nga.mil. The National Geospatial Intelligence Agency name, initials, and seal are protected by 10 United States Code Section 5445.

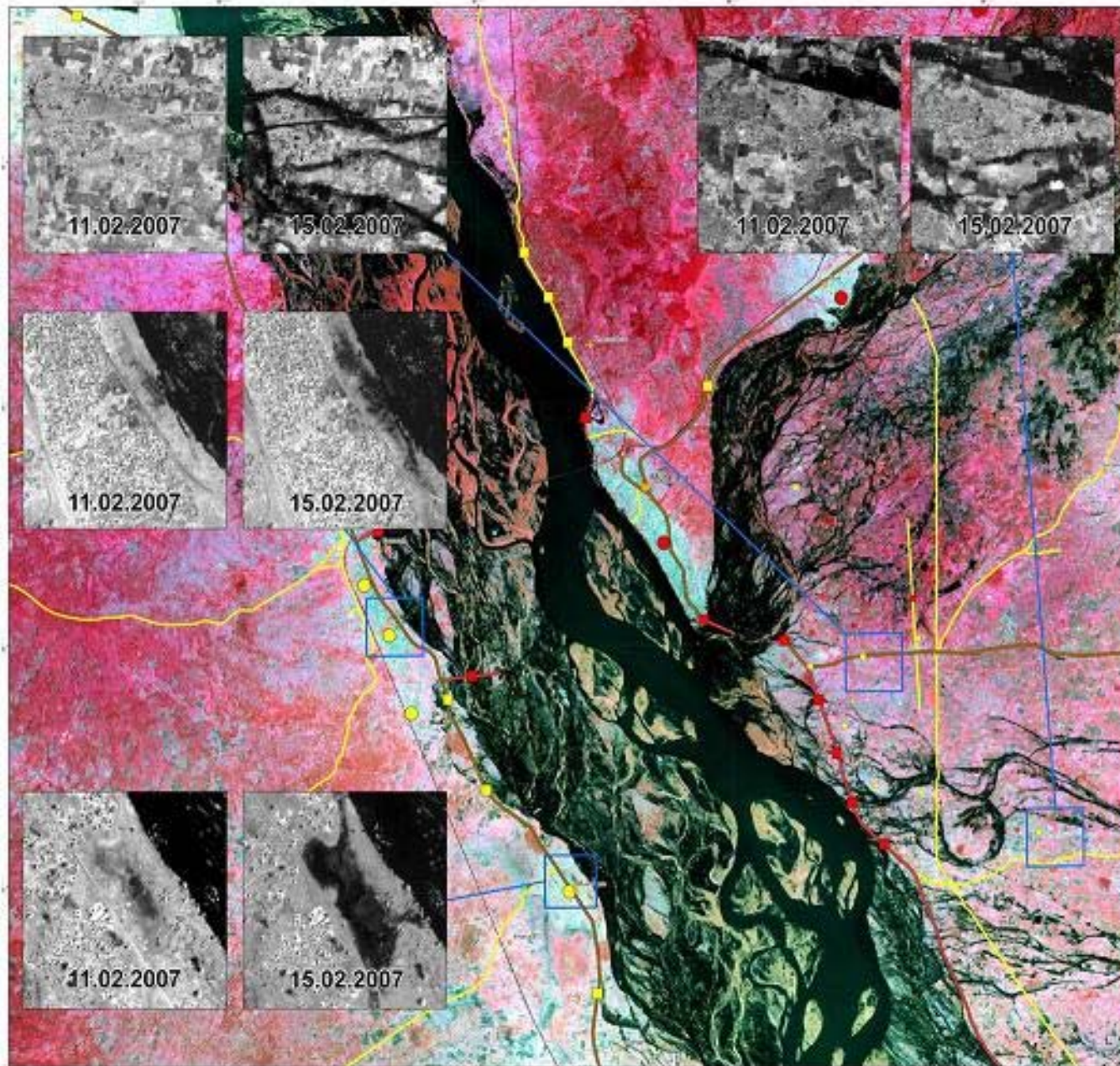
Second Administrative Level Boundaries Dataset. Copyright © United Nations 2002-2005. The source map has been provided by UNISCO (1997) through UNEP (1993) and modified by UN (2000). All rights reserved.

Cartorial source: NASA Landsat Program, 2004. Landsat ETM+ scene, Ortho GeoCover, 18028, Sour Falls, 12/30/2000. Source for this dataset was the Global Land Cover Facility, www.landcover.org.

Water bodies extraction and Vector data updating performed using the following images acquired through the International Charter "Space and Major Disasters" with the support of UNOSAT and RESPONDEUR.

RadarSat February 12, 2007
RadarSat March 25, 2006
Formosat February 11, 2007 Copyright NPO - 2007. Distributed from Image S.A.
Formosat February 15, 2007 Copyright NPO - 2007. Distributed from Image S.A.

Produced by ITMCA in collaboration with World Food Programme (February 21, 2007)





World Food Programme - ODAP Branch

Map prepared by Emergency Preparedness and Response Branch (ODAP) 20.11.2007

World Food Programme - ODAP Branch
 Map prepared by Emergency Preparedness and Response Branch (ODAP) 20.11.2007

Legend

- Major City
- Sub-Office
- Planned Sub-Office
- Major Road
- Minor Road
- Railway
- Water
- Storm Track - a Corridor Buffer of 100 km highlights worst affected areas
- Heavily Affected Sub-District

Storm Track
 Storm Track - a Corridor Buffer of 100 km highlights worst affected areas

Heavily Affected Sub-District
 Total Impact: Administrative boundaries, district boundaries, District Electricity, Roads, HEP, Poles, Storm Track

Source: Disaster Management Centre (DMC)
 Bangladesh Ministry of Food and Disaster Management

Bangladesh: Cyclone SIDR Areas of Concern

Updated official report from DMC states that the number of deaths caused by tropical cyclone SIDR has risen to 1,207 affecting 6.77 million people from 1.27 million. Areas of concern are highlighted in red on the map.

Legend

- Major City
- Sub-Office
- Planned Sub-Office
- Major Road
- Minor Road
- Railway
- Water
- Storm Track - a Corridor Buffer of 100 km highlights worst affected areas
- Heavily Affected Sub-District

Storm Track
 Storm Track - a Corridor Buffer of 100 km highlights worst affected areas

Heavily Affected Sub-District
 Total Impact: Administrative boundaries, district boundaries, District Electricity, Roads, HEP, Poles, Storm Track

Source: Disaster Management Centre (DMC)
 Bangladesh Ministry of Food and Disaster Management



District-Level Administrative Boundaries (Affected Area, Population, Forest, and Revenue, 2007 Census)

District	Area (km ²)	Population (2007)	Forest (km ²)	Revenue (2007)
Barisal	1,342.18	1,342,181	1,342.18	1,342,181
Chittagong	14,121.34	14,121,340	14,121.34	14,121,340
Dhaka	1,406.68	1,406,680	1,406.68	1,406,680
Feni	1,108.19	1,108,190	1,108.19	1,108,190
Khulna	1,335.94	1,335,940	1,335.94	1,335,940
Madhupur	1,135.94	1,135,940	1,135.94	1,135,940
Manikganj	1,135.94	1,135,940	1,135.94	1,135,940
Moulvibazar	1,135.94	1,135,940	1,135.94	1,135,940
Narayanganj	1,135.94	1,135,940	1,135.94	1,135,940
Shariatpur	1,135.94	1,135,940	1,135.94	1,135,940
Sylhet	1,135.94	1,135,940	1,135.94	1,135,940
Tangail	1,135.94	1,135,940	1,135.94	1,135,940
Tongi	1,135.94	1,135,940	1,135.94	1,135,940
Wazirpur	1,135.94	1,135,940	1,135.94	1,135,940
Barisal	1,342.18	1,342,181	1,342.18	1,342,181
Chittagong	14,121.34	14,121,340	14,121.34	14,121,340
Dhaka	1,406.68	1,406,680	1,406.68	1,406,680
Feni	1,108.19	1,108,190	1,108.19	1,108,190
Khulna	1,335.94	1,335,940	1,335.94	1,335,940
Madhupur	1,135.94	1,135,940	1,135.94	1,135,940
Manikganj	1,135.94	1,135,940	1,135.94	1,135,940
Moulvibazar	1,135.94	1,135,940	1,135.94	1,135,940
Narayanganj	1,135.94	1,135,940	1,135.94	1,135,940
Shariatpur	1,135.94	1,135,940	1,135.94	1,135,940
Sylhet	1,135.94	1,135,940	1,135.94	1,135,940
Tangail	1,135.94	1,135,940	1,135.94	1,135,940
Tongi	1,135.94	1,135,940	1,135.94	1,135,940
Wazirpur	1,135.94	1,135,940	1,135.94	1,135,940

The table below gives summary statistics for 8 most affected districts covered by the 100 km buffer zone. The World Food Programme makes no warranty on representation as to the accuracy or completeness of the data contained therein. Figures on this map are accurate and up to date to the best of our knowledge.

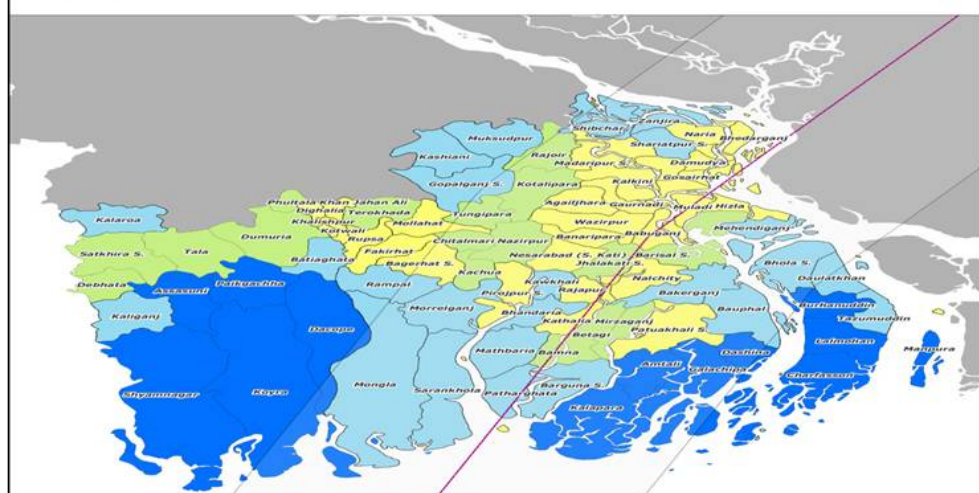
District	Population	Area (km ²)	Number of People in Need of Immediate Relief Assistance & Priority Services
Barisal	1,342,181	1,342.18	1,342,181
Chittagong	14,121,340	14,121.34	14,121,340
Dhaka	1,406,680	1,406.68	1,406,680
Feni	1,108,190	1,108.19	1,108,190
Khulna	1,335,940	1,335.94	1,335,940
Madhupur	1,135,940	1,135.94	1,135,940
Manikganj	1,135,940	1,135.94	1,135,940
Moulvibazar	1,135,940	1,135.94	1,135,940
Narayanganj	1,135,940	1,135.94	1,135,940
Shariatpur	1,135,940	1,135.94	1,135,940
Sylhet	1,135,940	1,135.94	1,135,940
Tangail	1,135,940	1,135.94	1,135,940
Tongi	1,135,940	1,135.94	1,135,940
Wazirpur	1,135,940	1,135.94	1,135,940



World Food Programme - ODAP Branch

Bangladesh: Areas of Concern and Food Security after Cyclone SIDR

Map prepared by Emergency Preparedness and Response Branch (ODAP) 20.11.2007



Legend

- Cyclone SIDR Track
- 100 Km Buffer Corridor
- Relative Food Insecurity: Low (Yellow), Moderate (Orange), High (Red), Very High (Dark Red)

Data Source: Boundaries with Names: GMT 1708, Food Security: UAA 2004

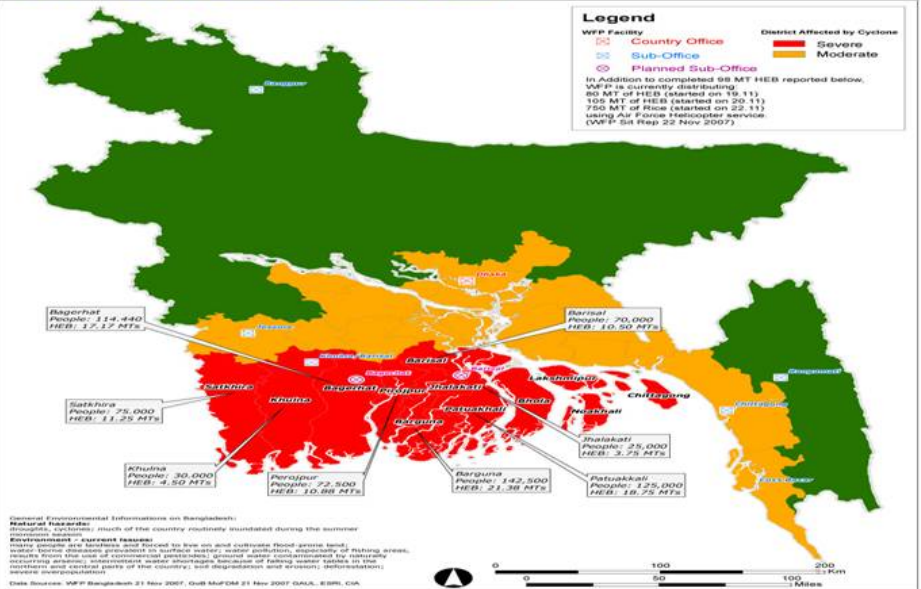
Disclaimer: Boundaries and names on this map do not imply official acceptance or recognition by World Food Programme or United Nations. The World Food Programme makes no warranty on representation as to the accuracy or completeness of the data contained therein. Figures on this map are accurate and up to date to the best of our knowledge.



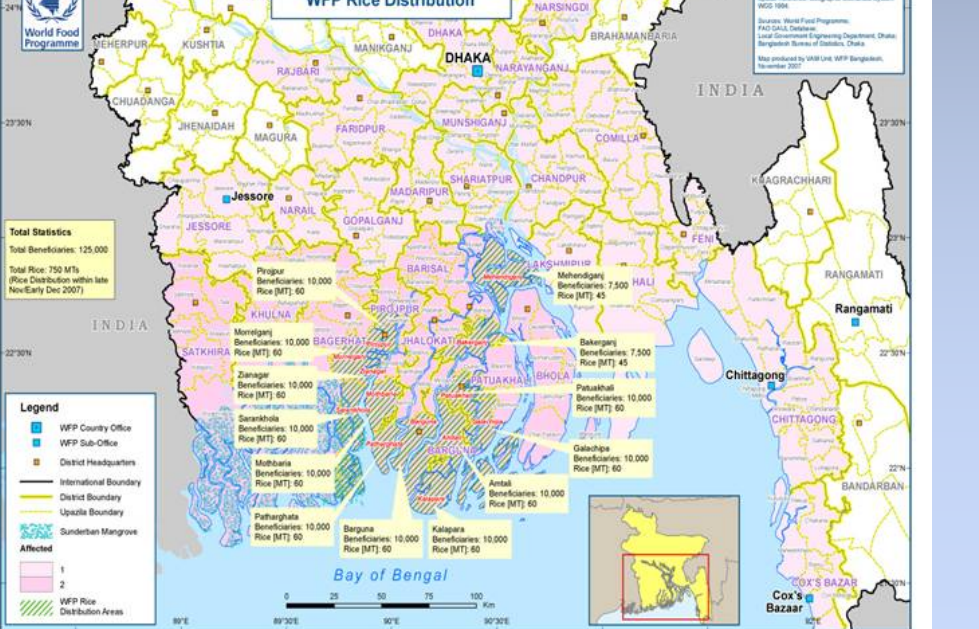
WFP Food Assistance by District in Bangladesh after Cyclone SIDR

World Food Programme - ODAP Branch

Map by Emergency Preparedness and Response Branch (ODAP) 22 November 2007



BANGLADESH - Cyclone Sidr WFP Rice Distribution



Part of the process of the map is to identify or recognize the points that represent the total forest area and the total area of the forest. The map is a composite of the forest area and the total area of the forest. The map is a composite of the forest area and the total area of the forest. The map is a composite of the forest area and the total area of the forest.

Summary as of April 2010 (MTP)

Commodity	Volume MT	Volume mt	Beneficiaries
Rice	1,000,000	4,000,000	
Wheat	100,000	20,000	
Polio	100,000	10,000	
Oil	100,000	40,000	
Gas	100,000	1,000	
Coal	100,000	1,000	
Total	1,400,000	4,400,000	200,000

Pathway
Storage sites identified and under negotiation

Myanmar Logistics Hub
2,000 mt of total storage capacity available in warehouses of Myanmar Agriculture Produce Trade

Pyawbwe Logistics Hub
2 warehouses for 400 mt total capacity

Latpada
4 warehouses for 1,200 mt total capacity

Bogale
5 warehouses for 2,200 mt total capacity. 2 more warehouses under construction

Yangon
4,000 mt of warehouse storage

MTP contracted 30 trucks of varying capacities to deliver goods to MTP Operations Update 2010/11

Shipping - boats contracted to the:
- two barges and push barges (200, 500, 150 and 600 T respectively)
- two boats (300 and 600 T respectively)
MTP Operations Update 2010/11

One Mi-8 helicopter is in use in Myanmar. Six other helicopters are currently in Bangkok and will be in Yangon by June 09.
MTP Update: 02/11/2009

Large Flota Yangon - Latpada (approx. 300 mt)

COMMODITY export is the mainstay for all transport infrastructure in Myanmar, and the MTP will have the advantage of being able to export all its goods through the Yangon MTP Operations Update 2010/11

MTP Facilities

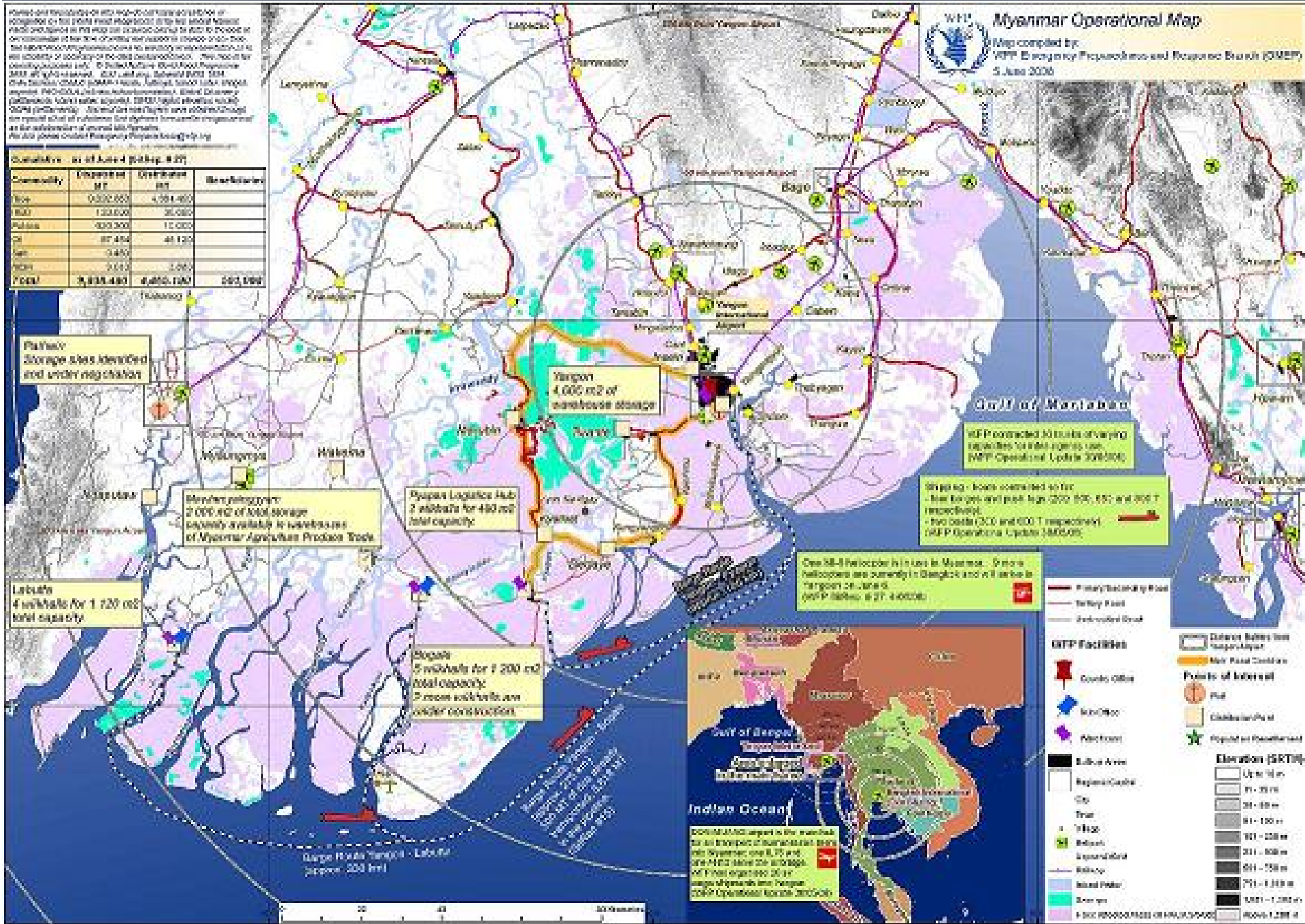
- County Office
- Warehouse
- Port/road
- Subs Area
- Regional Center
- Town
- Village
- Relief
- Government
- Railway
- International
- Overseas
- 1:500,000 Scale of Map/Scale

Points of Interest

- Port
- Construction site
- Project on Development

Elevation (SRTM)

- Up to 10 m
- 11 - 20 m
- 21 - 30 m
- 31 - 40 m
- 41 - 50 m
- 51 - 60 m
- 61 - 70 m
- 71 - 80 m
- 81 - 90 m
- 91 - 100 m
- 101 - 110 m
- 111 - 120 m
- 121 - 130 m
- 131 - 140 m
- 141 - 150 m
- 151 - 160 m
- 161 - 170 m
- 171 - 180 m
- 181 - 190 m
- 191 - 200 m





WFP Operational Response

Rapid Deployment

Staff
Food
Equipment

Emergency Funding

IRA
CERF
Advance Funding

Emergency Coordination

Task Forces/Sitroom
EP Web Crisis pages
Clusters
Flash Appeals