

# **From Food Aid to Food Assistance The Programme Cycle**

**Paul Turnbull**

Programme Design Service

**Mario Musa**

Food Security Analysis Service

Presentation at Executive Board Induction Session

January 25, 2011

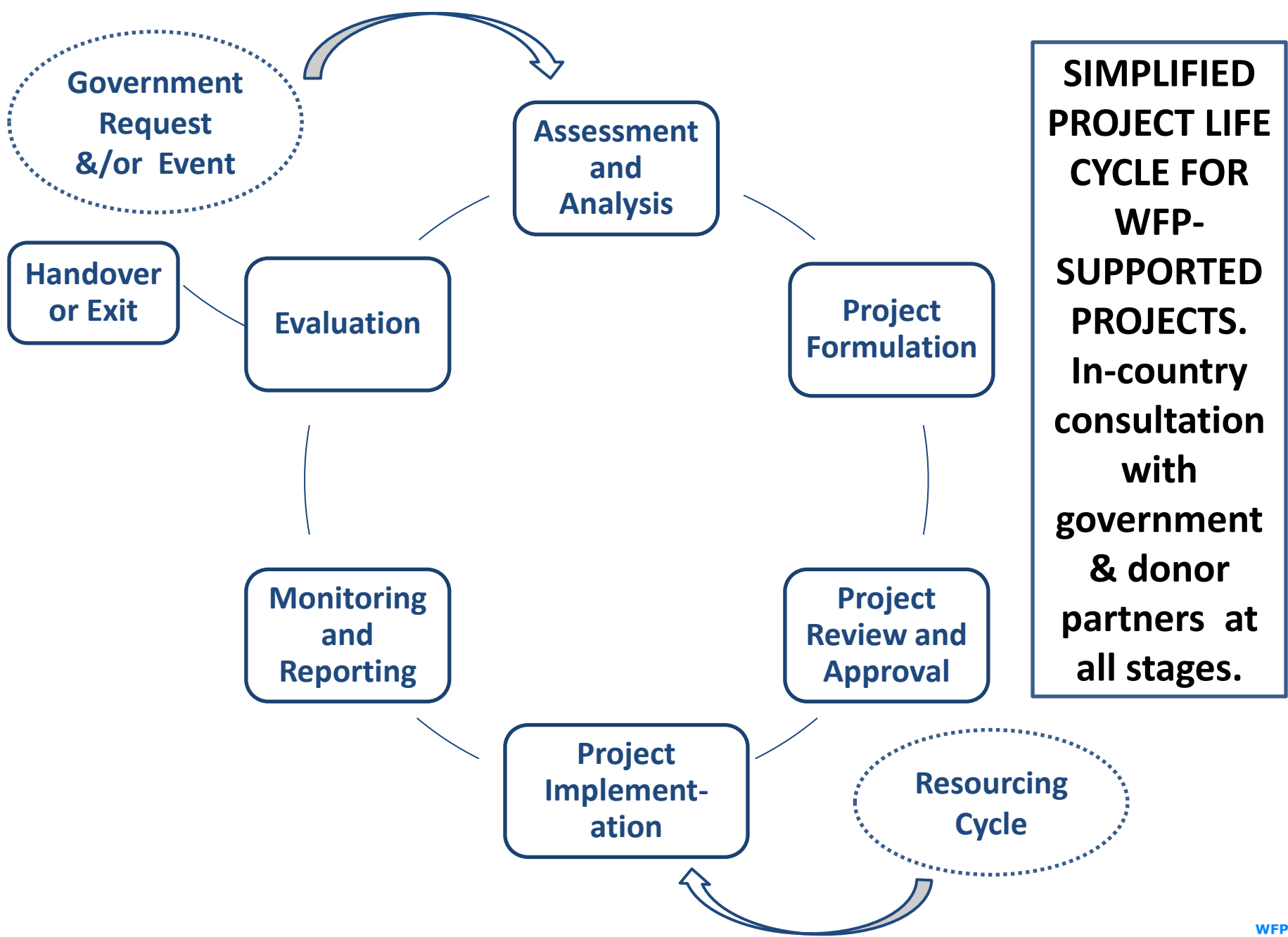


# WFP Programme Categories

- Emergency Operations (EMOPs)
- Protracted Relief and Recovery Operations (PRROs)
- Country Programmes – Development projects.
- Special Operations

# Programme Category Approvals

- EMOPs
- PRROs - **EB approval**
- Country Programmes – Development projects - **EB approval**
- Special Operations



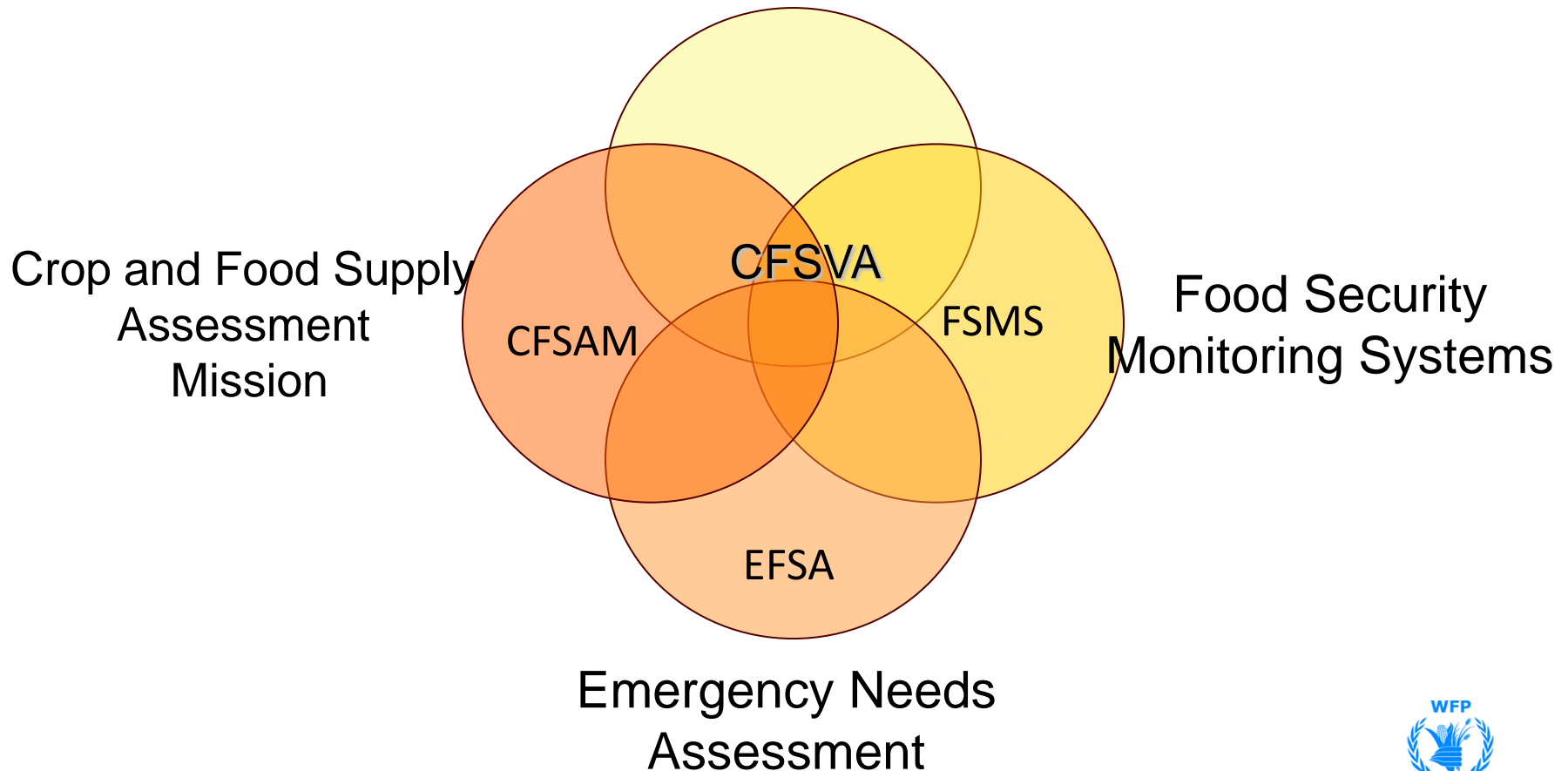
# Assessment & Analysis:

## Key questions

- **Who** is food insecure or vulnerable?
- **How many** are they?
- **Where** do they live?
- **How** is the situation likely to evolve?
- **What** should be done to save their lives and livelihoods?

# Assessment-Analytical Tools

Comprehensive Food Security  
and Vulnerability Analysis



# EMOP : NUTRITION & FOOD SECURITY SITUATION JUNE 2010

Results from nutrition survey (June 2010) & Food security and vulnerability survey (May 2010)

Libya



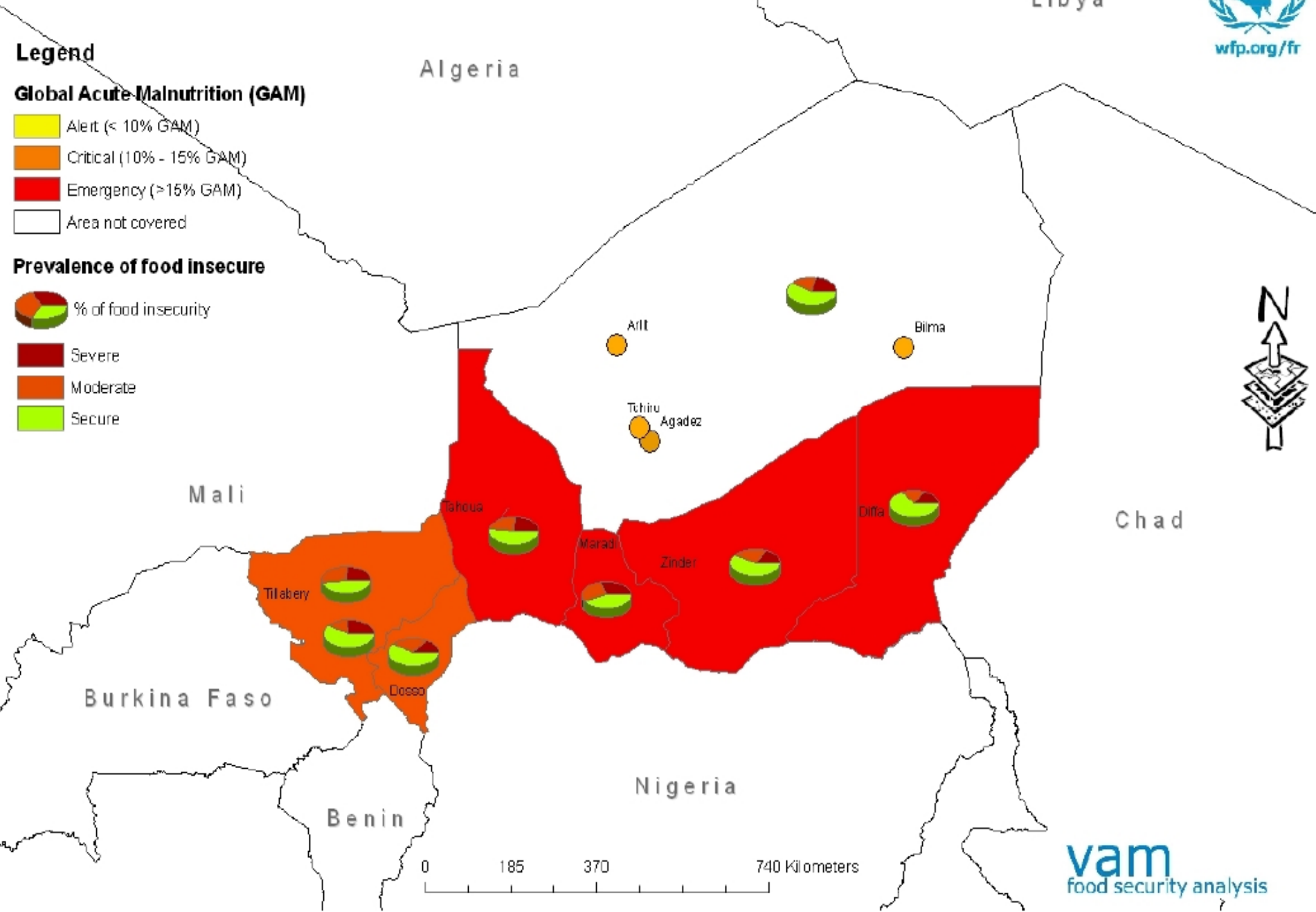
## Legend

### Global Acute Malnutrition (GAM)

- Alert (< 10% GAM)
- Critical (10% - 15% GAM)
- Emergency (>15% GAM)
- Area not covered

### Prevalence of food insecure

- % of food insecurity
- Severe
- Moderate
- Secure



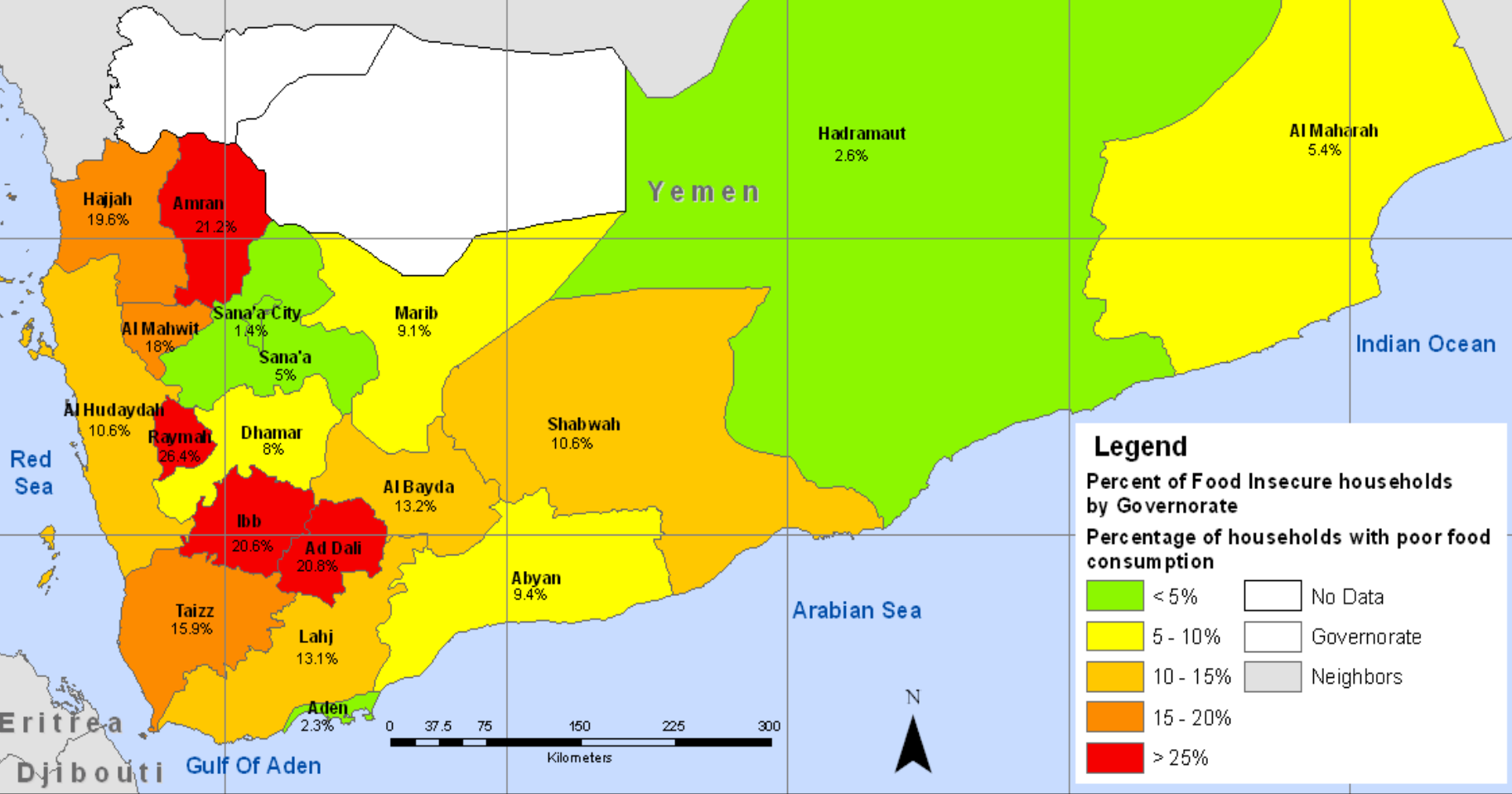
0 185 370 740 Kilometers



Saudi Arabia

Oman

Production data : March 2010  
 Spheroid : WGS 1984 - Grid : Lat/Long 1 Degree interval  
 Data source : FAO Gaul 2009, CFSS Yemen  
 Map produced by WFP Food Security Analysis Service (DMXF)  
 The boundaries and the names shown and the designations used in this map do not imply official endorsement or acceptance by the United Nations.



**Legend**

Percent of Food Insecure households by Governorate

Percentage of households with poor food consumption

- < 5%
- 5 - 10%
- 10 - 15%
- 15 - 20%
- > 25%
- No Data
- Governorate
- Neighbors



Eritrea  
Djibouti  
Gulf Of Aden

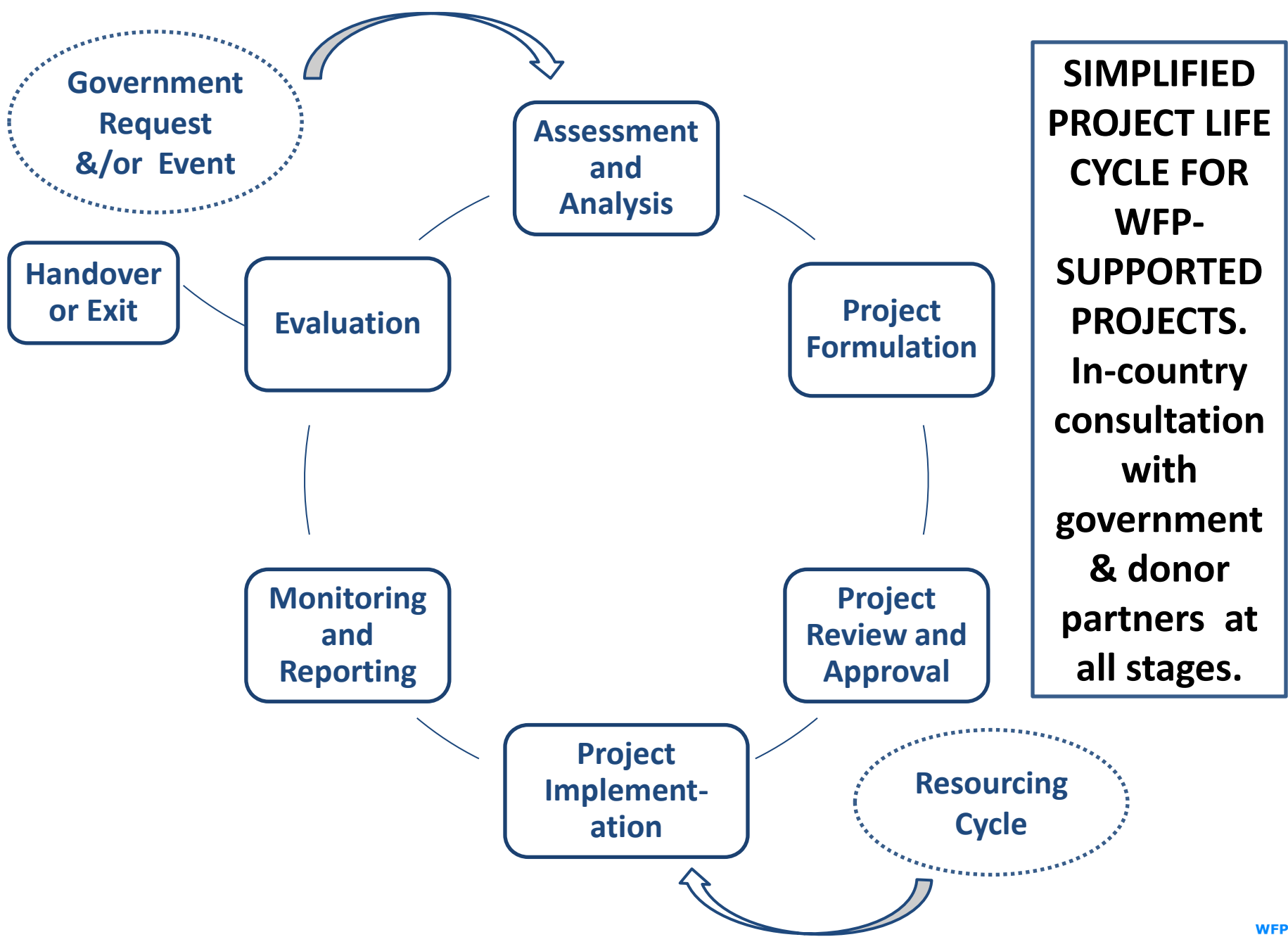
Arabian Sea

Indian Ocean



# Emerging tools and techniques

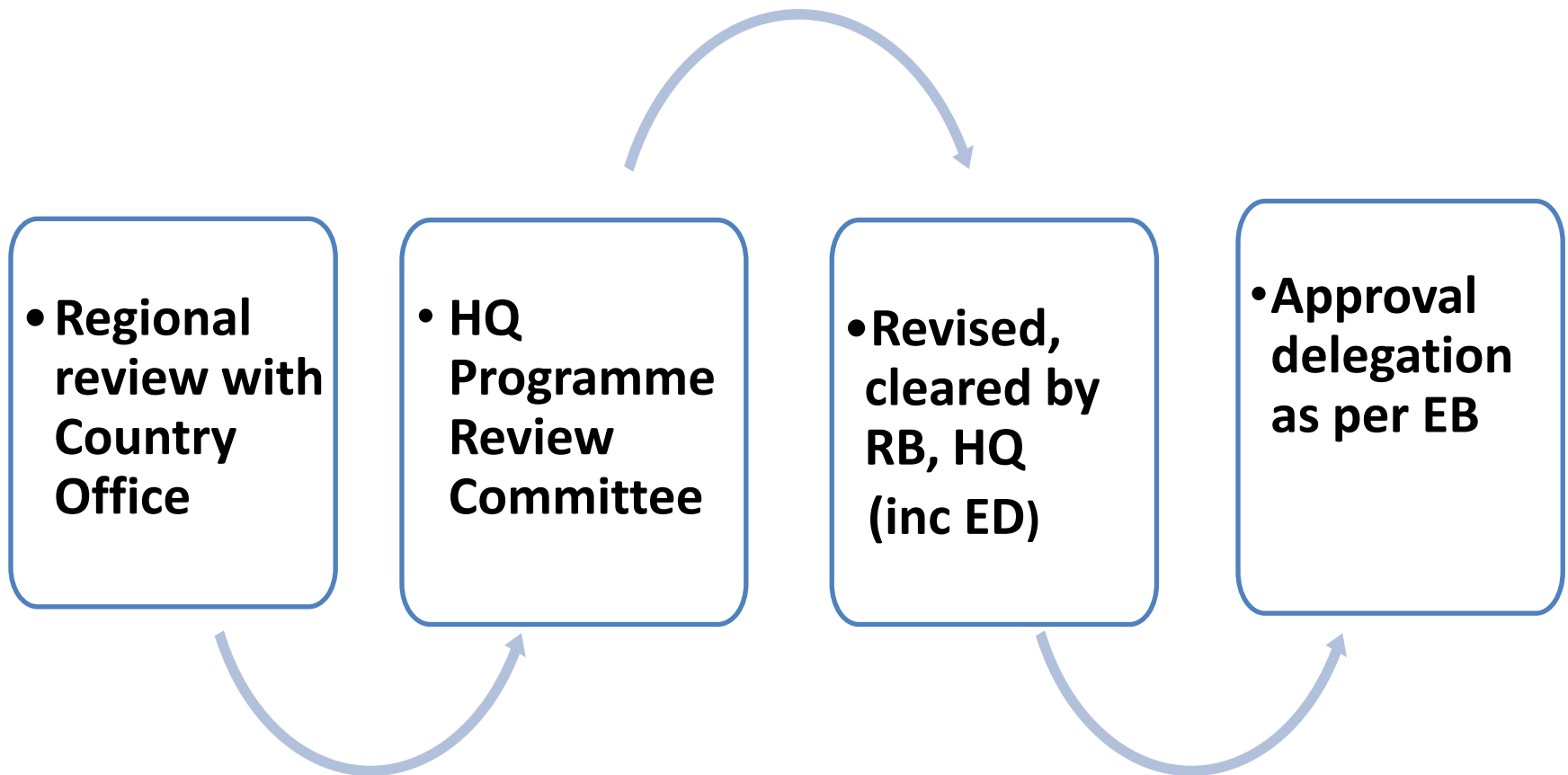
- Market analysis
- Assessment of urban areas
- Food security risk analysis
- Strengthened nutrition analysis
- Global Vulnerability Index
- Advanced technologies

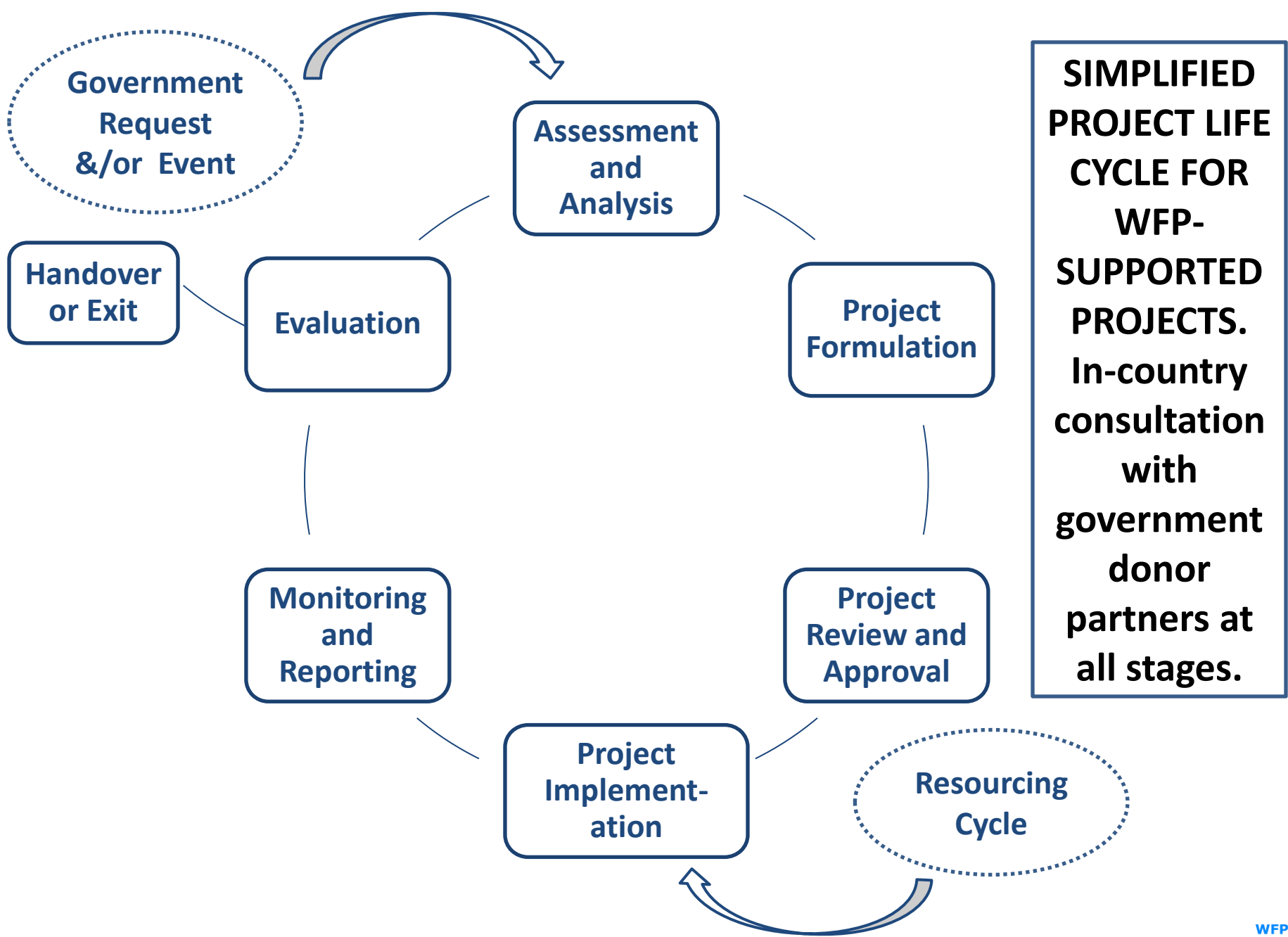


# Project Review and Approval

Clearance

Approval





# Evaluation

**Coincides with preparation of follow-up operation or handover/exit**

**Can be done at different stages (e.g. real, time, mid-term, end –term, completion)**

**Accountability and Learning**

**Can be decentralized and externalized**

**Single operation, country level or strategic**

“Food aid to food assistance”

# Questions and Answers