



SYRIA  
Crisis Response

# 1st Quarterly Operational Briefing

SYRIA JORDAN LEBANON TURKEY IRAQ EGYPT



**WFP Syria Crisis Response  
Operational Briefing**

**An Overview- 29 January 2014**

# Syria Operation 2013 Achievements

**Almost**  
**80,000**   
received WFP  
nutrition support

**3.8** million people  
in December

  
**29** Partners  
in all **14** Governorates

## WFP Airlift



Over  
**1000**



on the road  
each month

# Syria 2014 Plans



**15,000** vulnerable **women** will receive voucher-based nutritional support



Introduce school feeding targeting

**350,000** children

**TARGET**

**240,000**

with WFP



nutrition support

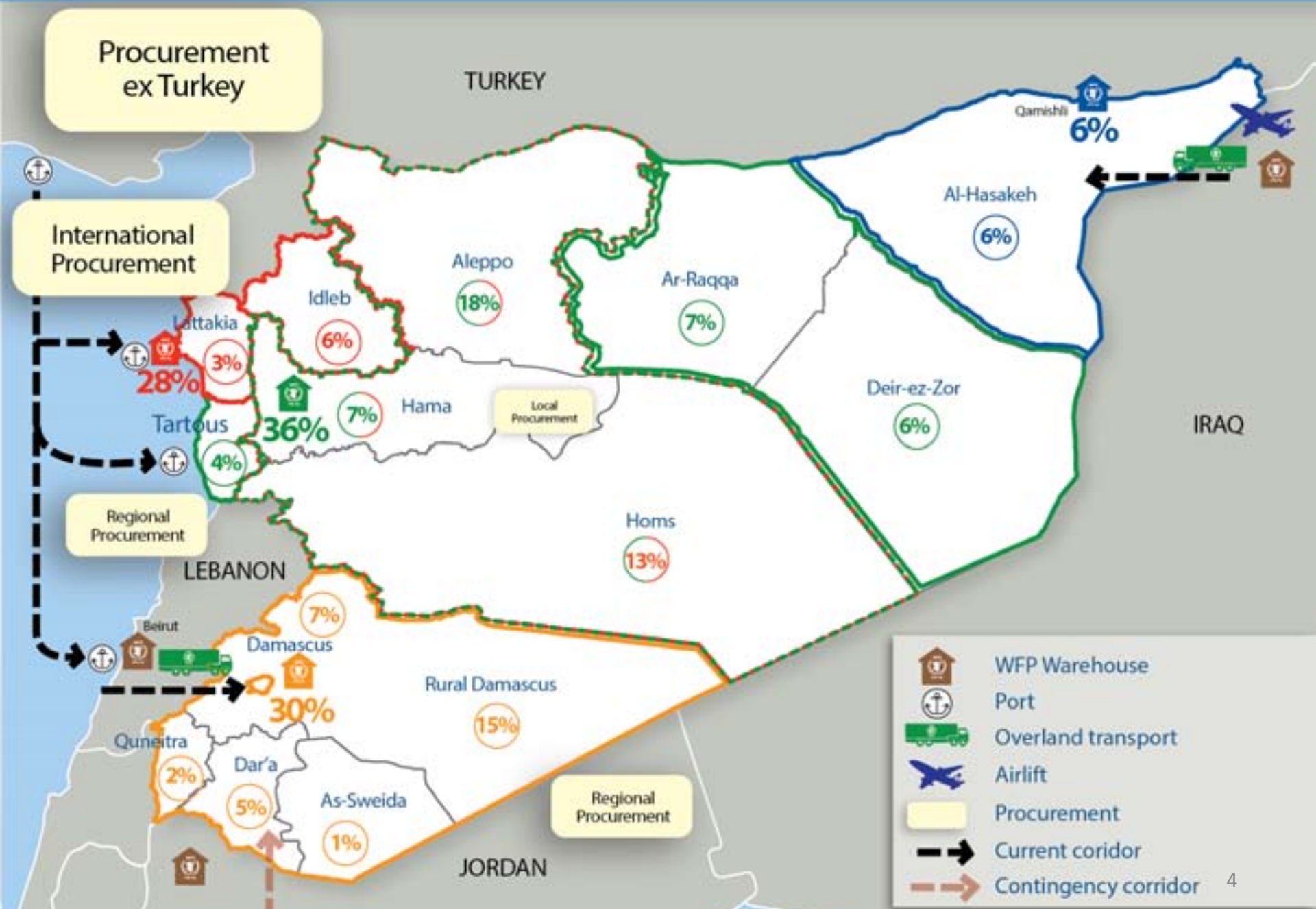
**200%** increase



**4.25** million people targeted in 2014

**11.8%** increase

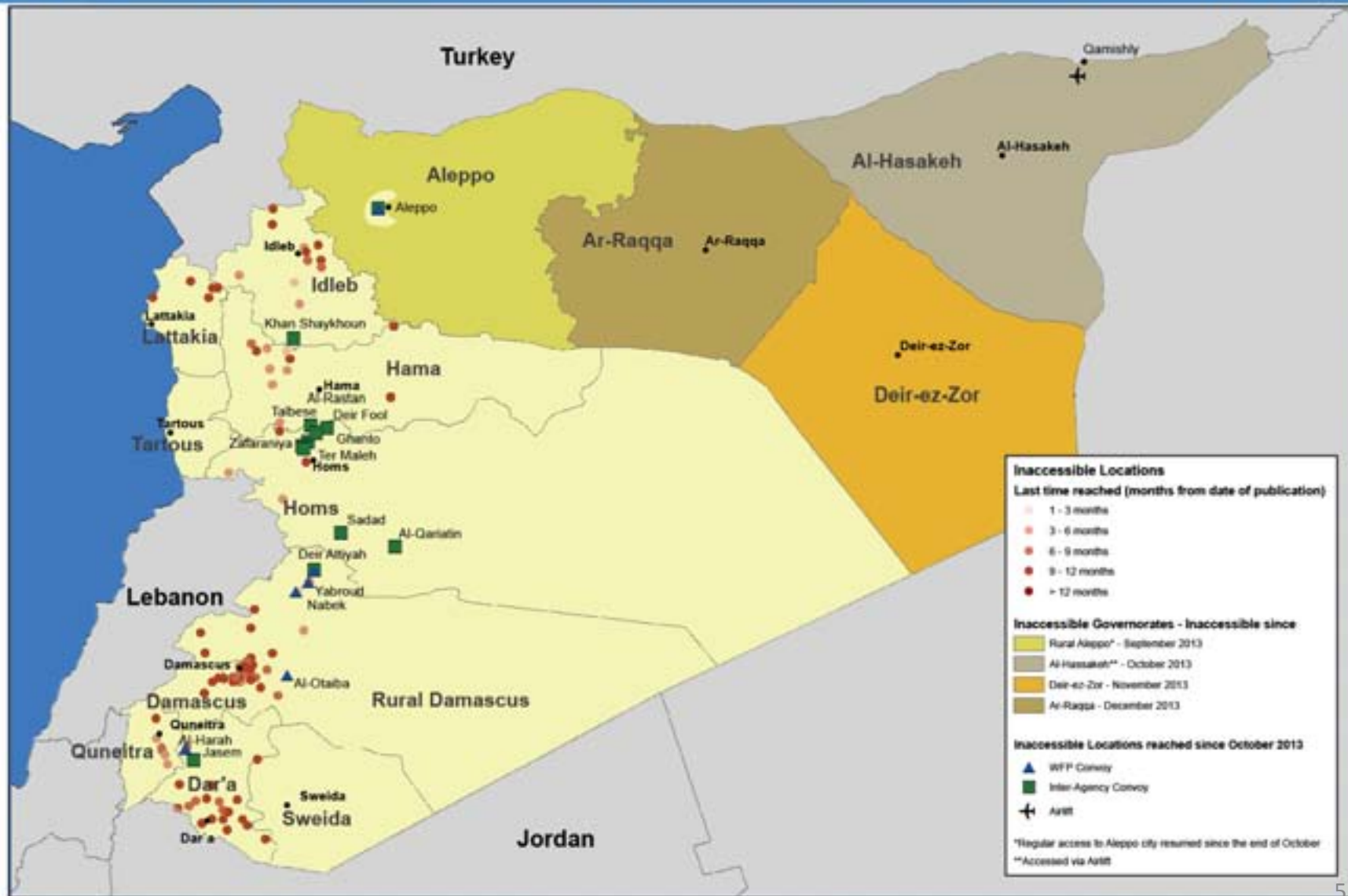




# Syria Key Challenges



## SYRIA CRISIS Inaccessible Locations inside Syria - January 2014



# Syria Risk Mitigation Measures

**ACCESS**



**Negotiation**

**WFP Airlift**



**SECURITY**



**Contingency Planning**

**MONITORING**



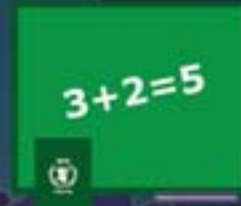
**Partnerships**



# Regional Operation 2013 Achievements



Over **90%**  
received vouchers



Over **20,700**  
children received  
school feeding

Over **US\$ 300** million  
injected into local  
economies



**1.5** million people  
in **2013**

# 2013 Achievements by Country

## TURKEY

Vouchers  119,612

## LEBANON

Vouchers  578,623

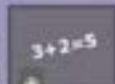
Food Distribution  57,992

**636,615**

## IRAQ


Vouchers  68,397

Food Distribution  32,372

School Feeding  8,445


**100,769**

## EGYPT

Vouchers  81,985

## JORDAN

Vouchers  545,666

Food Distribution  124,105

School Feeding  12,284

**545,666**



# Regional Operation 2014 Plans



**60,000**  
students with  
**school feeding**  
**190% increase**

TURKEY

**2.7 million**   
refugees in 2014  
**80% increase**



**99%**  
of voucher  
assistance with  
**electronic  
vouchers**

LEBANON

IRAQ

JORDAN



**OneCard**  
assistance with  
**sister agencies  
and partners**



**Over 300,000**  
Lebanese residing in  
**host communities**

## Regional Key Challenges

**Insecurity and  
political instability**

**Tensions between  
refugees and  
host communities**

**Sudden massive  
refugee influxes**

# Regional Risk Mitigation Measures

**Insecurity** and political instability



**Contingency Planning**

**Tensions between refugees and host communities**

**Supporting host communities**



**Sudden massive refugee influxes**



**Monitoring and Preparedness**



# Generosity 2013

## WFP SYRIA

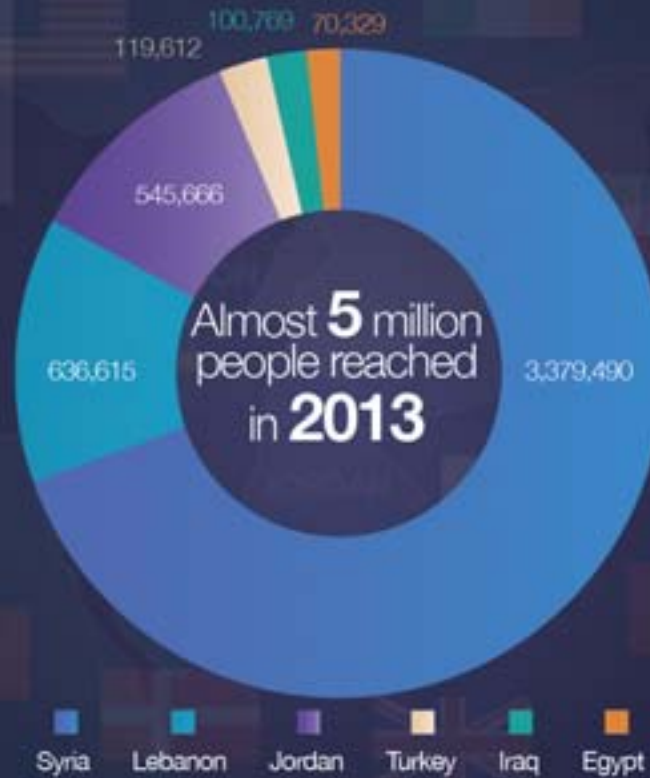
US\$ 479 million required  
US\$ 378 million received  
US\$ 376.5 million spent

**99.6%**  
Spent

## WFP REGION

US\$ 638 million required  
US\$ 479 million received  
US\$ 440 million spent

**92%**  
Spent



MINISTRY OF FOREIGN AFFAIRS OF DENMARK  
**DANIDA** INTERNATIONAL DEVELOPMENT COOPERATION

**Canada**

CENTRAL EMERGENCY RESPONSE FUND

**Australian AID**



# Continued Commitment 2014

## WFP SYRIA

US\$ 947 million required

**41%**  
of the SHARP

## WFP REGION

US\$ 1.08 billion required

**25%**  
of the RRP6



Syria Lebanon Jordan Turkey Iraq Egypt

Requirements in 2014







SYRIA  
Crisis Response

Thank you