



**World Food Programme**



# **Syria Crisis Response**

**Syria, Lebanon, Jordan, Turkey, Iraq & Egypt**

**Special Operational Briefing**

Presentation to the  
**WFP Executive Board**

FAO Red Room - 04 September 2014

# Humanitarian Situation

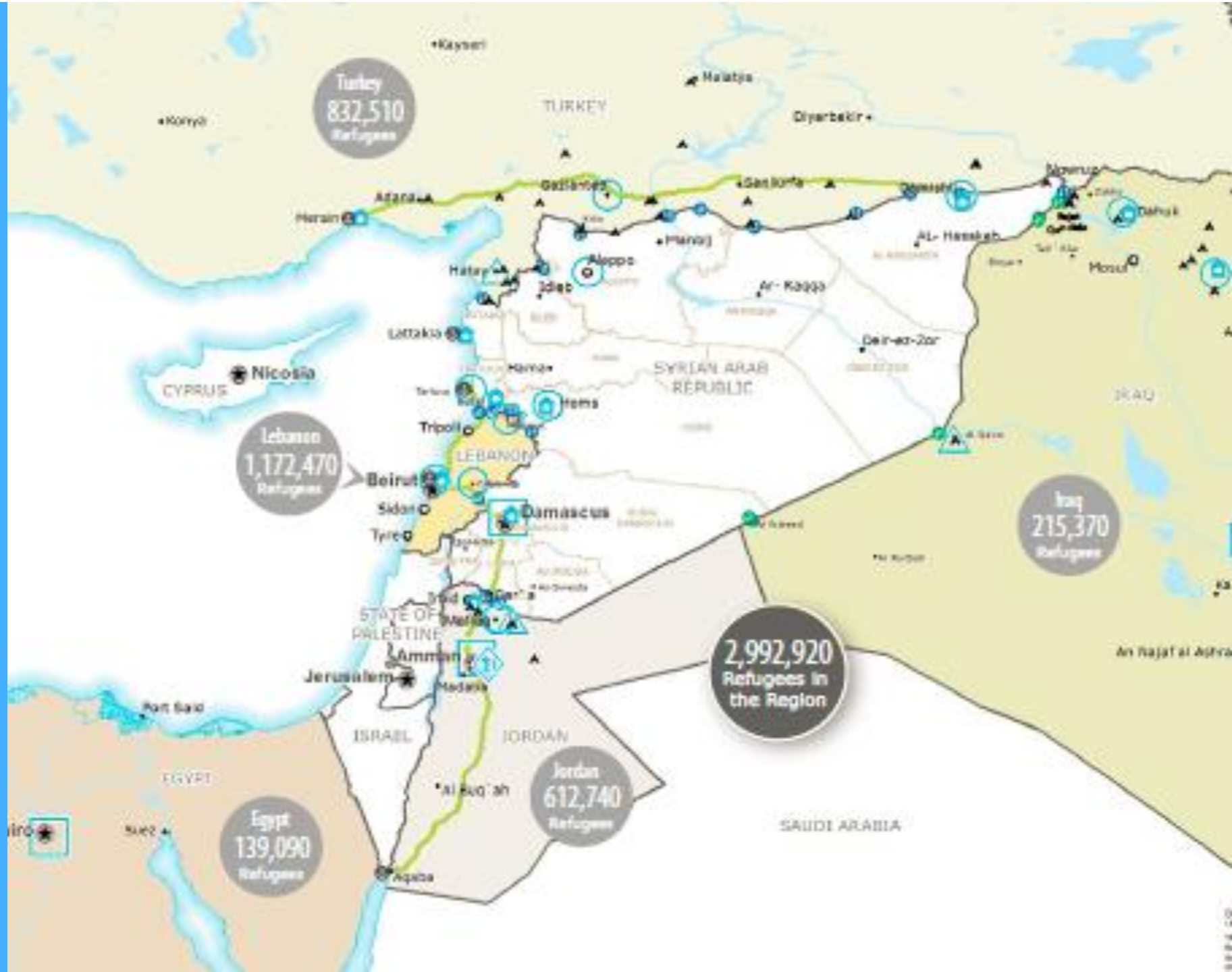
- **10.8 million** people *in need of humanitarian assistance* in Syria
- More than **6.5 million of them internally displaced**
- **6.3 million** people acutely *in need of food assistance*
- **4.6 million in hard-to-reach areas**
- **3 million Syrian refugees** in neighbouring countries
- **In August, WFP dispatched food for a record 4.17 million people in Syria, 98% of the targeted 4.25 million**



# Security Situation

- In Syria, continuing widespread conflict, notably in the north
- Military/territorial gains in Syria and Iraq by Islamic State (IS) provoking further large-scale displacement and impeding humanitarian access
- Risk of Bab Al-Salam and Bab Al-Hawa border crossings to Syria from Turkey falling under control of IS
- Surface-to-air missiles in hands of hard-line Jihadists threaten air traffic, including movement of humanitarian cargoes
- In Iraq, IS advances render some Syrian refugees inaccessible
- In Lebanon, Arsal insecurity complicates WFP operations

Regional Map



# Framework of Interventions

## **Syria:**

- EMOP in support of 4.25 million people in 2014, at a cost of US\$ 915 million.
- Special Operation: logistics and telecommunication augmentation and coordination to support humanitarian activities

## **Sub-region:**

- EMOP in support of 2.7 million Syrian refugees in Jordan, Lebanon, Iraq, Turkey and Egypt, at a cost of US\$1.04 billion for 2014

## Syria

- **Emergency Food Assistance** targeting up to 4.25 million vulnerable food insecure people
- **Blanket Supplementary Feeding** for up to 240,000 children under five (Plumpy'Doz)
- **Voucher-Based Nutrition Support** for up to 15,000 pregnant and nursing women
- **School Feeding** programme for up to 350,000 pupils in 4 governorates

## Sub-region

- **Emergency Food Assistance** for up to 2.62 million refugees through vouchers and food parcels
- **Emergency Nutrition** for up to 22,280 Syrian refugees in Jordan targeting displaced children under five and pregnant and nursing women
- **School Feeding** for up to 70,000 pupils in Jordan and Iraq
- Support for up 36,000 **Vulnerable Lebanese**

# Operational Priorities

## Syria

- To **reach 4.25 million** targeted General Food Distribution recipients each month
- To **ensure all targeted 240,000 infants (under two) receive fortified Plumpy'Doz**
- **Launch a school-feeding programme** (this month, for 27,000 pupils) that will ultimately serve 350,000 IDP children)
- Expand **voucher-based nutrition support programme** for pregnant and nursing women to 15,000 beneficiaries (from 1,500 at present)
- Ensure satisfactory completion of September–November 2014 **Syria Household Food Security Survey**, co-led by WFP and government, to inform 2015 EMOP and SHARP

## Sub-region

- Expand **vulnerability-based targeting**
- Continue transitioning of regular assistance and paper vouchers to **e-vouchers**
- Establish a **common assistance platform (OneCard)**
- Introduce resilience and development programmes focusing on **vulnerable local communities**

## Syria Operation

- **Monitoring coverage varies** according to developments on the ground
- Security and access constraints still **prevent or impede monitoring activities** in many locations, particularly Quneitra, Deir-ez-Zor and Ar-Raqqa governorates
- **Dedicated WFP monitoring teams** active in accessible areas
- **Private contractors** monitor activities and verify distributions in hard-to-reach areas
- Significant improvements in Aleppo, Dar'a, Idleb, Rural Damascus, Homs and Hama

***For January – June 2014, WFP monitored an average of 34% of the distribution points in Syria each month, compared to 15% for most of 2013.***



## Sub-region

- ***Continued roll-out of harmonised set of monitoring and evaluation*** (M&E) data collection tools
- ***Further expansion of household-level post-distribution monitoring and price monitoring***
- Continued roll-out of platform to acquire real-time data on refugees via mobile devices by field monitors in Jordan, Egypt and Lebanon
- ***Baseline, pre-assistance vulnerability assessment*** of newly-arrived refugees in Lebanon and Jordan
- ***Evaluation of viability of cash programming*** – ongoing in Jordan and Lebanon

# Access Constraints

- ***Pervasive fighting***
- ***Fragmented war***
- ***Multiple armed groups and front lines***
- ***IS-controlled north eastern governorates least accessible***
- ***Airlifts from Damascus only way into Al-Hasakeh; reopening of Nusaybeen/Qamishly border crossing crucial***
- ***Risk of IS/Jihadist groups seizing Bab Al Salam and Bab Al Hawa border crossings***
- ***4.67 million people currently in 287 hard-to-reach areas; at least 240,000 people trapped in besieged areas*** (OCHA estimates)

***Cross-line access requires protracted, painstaking negotiations with range of parties and armed groups***

# Access Gains

## Cross-line and cross-border access

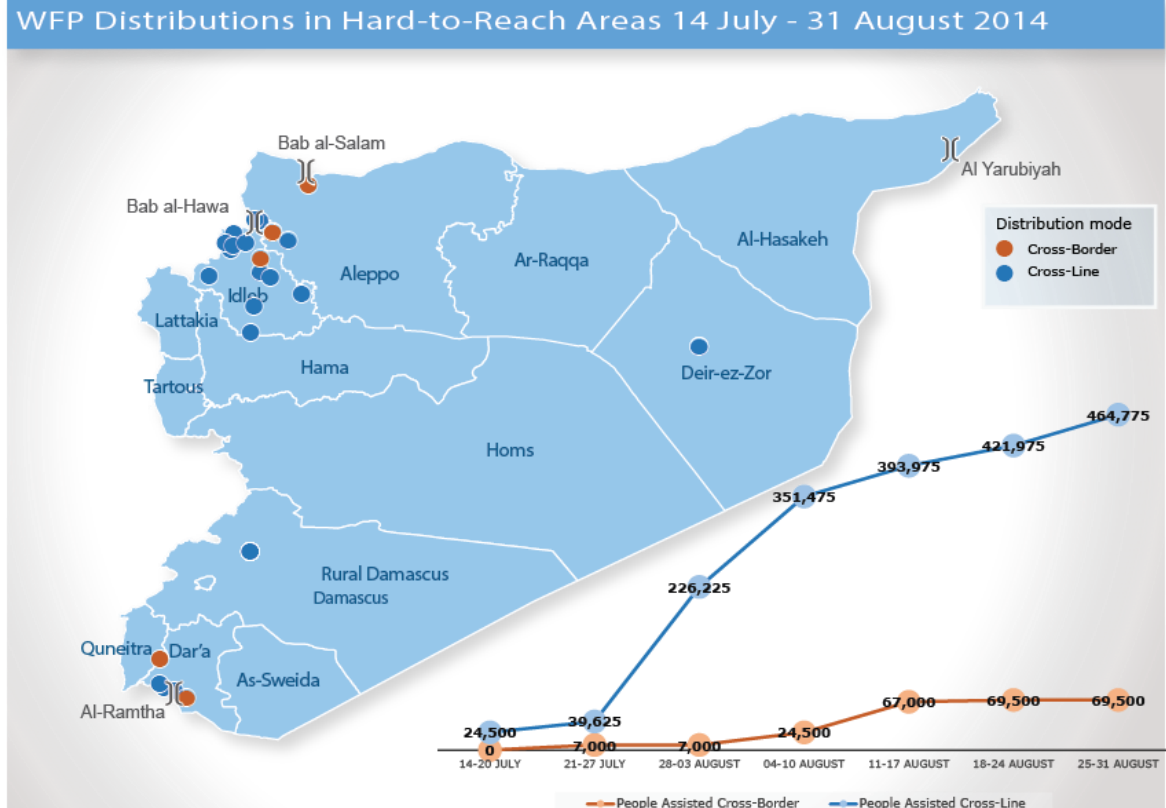
WFP dispatches in August rose for fourth consecutive month, targeting a record 4.17 million people, 98% of planned 4.25 million.

In the six weeks from mid-July to end-August, WFP **delivered food cross-line for 464,000 people in hard-to-reach areas**, a four-fold increase on prior six-week period

Since adoption of SCR 2165 (14 July) WFP **food for 70,000 people delivered cross-border** into Syria

## Improved access key objective of Executive Director's 12 August visit to Damascus

**Since adoption of SCR 2139 (22 February) and SCR 2165 (14 July) WFP food has reached more than 1.6 million people in besieged and hard-to-reach areas**



# Syrian Arab Republic: Food security sector - Beneficiaries reached

## June 2014 distribution cycle (5 June - 20 July)



### Hama 532,304

As Salamiyeh	54,250
As Suqaylabiyah	28,396
Hama	372,888
Masyaf	1,420
Muhradah	9,705
unknown	65,645

### Homs 638,025

Al Makhrim	18,610
Homs	533,620
Tall Kalakh	25,000
unknown	60,795

### Idleb 379,108

Al Ma'ra	63,086
Ariha	39,731
Harim	87,668
Idleb	148,682
Jisr-Ash-Shugur	39,941

### Lattakia 199,304

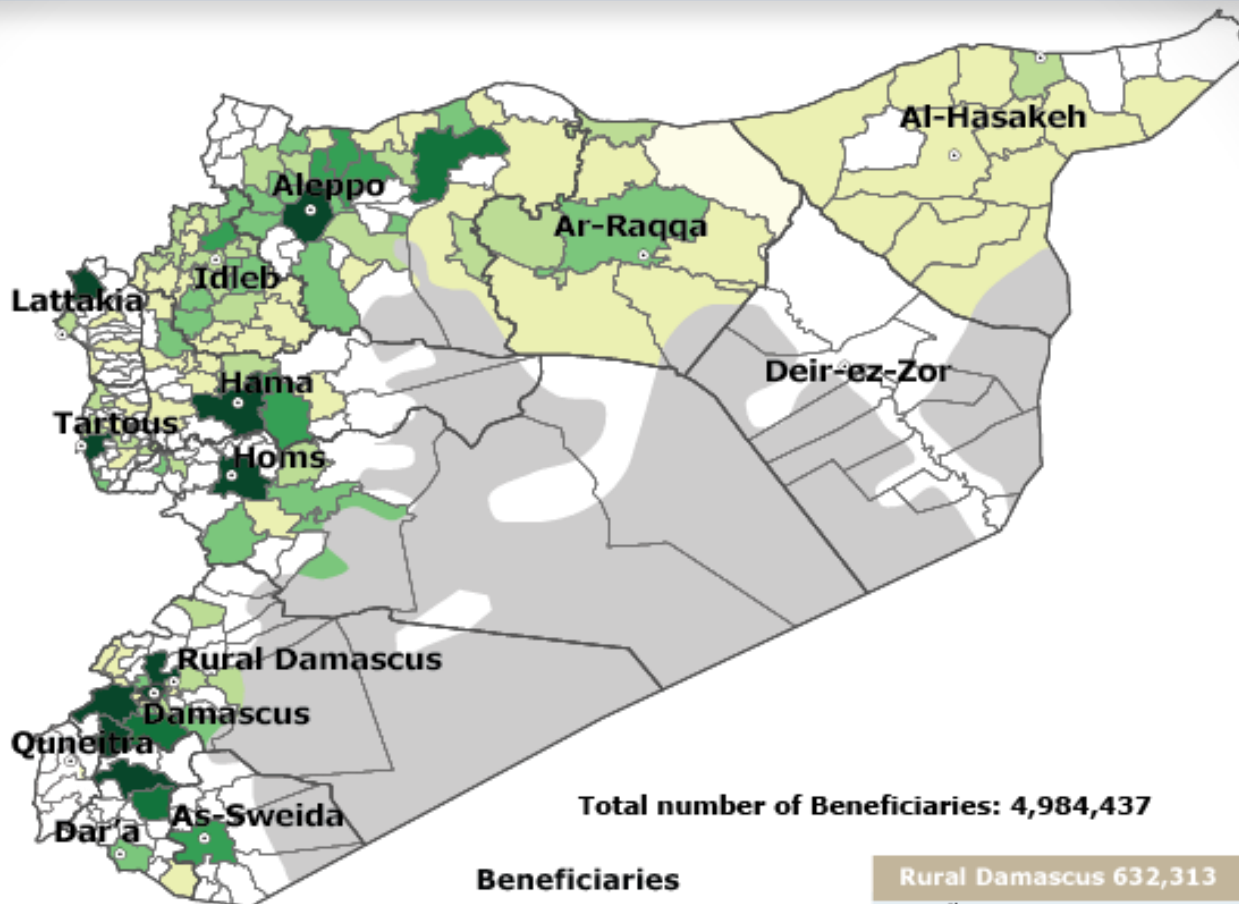
Al Hafa	6,250
Al Qardaha	3,750
Lattakia	185,554
unknown	3,750

### Quneitra 10,000

Quneitra	10,000
----------	--------

### Tartous 217,500

Banyas	6,000
Dreikish	11,500
Safita	23,000
Sheikh Badr	5,500
Tartous City	35,500
unknown	136,000



**Total number of Beneficiaries: 4,984,437**

### Beneficiaries

10,000 - 20,000
20,000 - 40,000
40,000 - 60,000
60,000 - 80,000
80,000 - 575,000
Non Populated Areas

Number of beneficiaries may reflect different levels of food assistance received.

### Rural Damascus 632,313

At Tall	88,145
Az Zabdani	3,300
Darayya	38,321
Duma	72,576
Erneh	5,000
Hafyr Tahta	10,000
Jaramana	31,820
Kisweh	10,000
Qatana	208,764
Rural Damascus	134,865
Yabrud	16,277
unknown	13,245

### Aleppo 1,184,279

Afrin	15,030
Ain Al Arab	19,680
Al Bab	84,738
As-Safira	15,845
A'zaz	163,185
Jarablus	34,470
Jebel Saman	637,491
Manbij	101,340
Sfeirah	7,500
Shahba	42,500
unknown	62,500

### Al-Hasakeh 58,500

Al Malika	5,000
Al-Hasakeh	22,000
Quamishli	21,000
Ras Al Ain	10,500

### Ar-Raqqa 122,140

Al-Thwarah	32,920
Ar-Raqqa	46,060
Tell Abiad	26,470
unknown	16,690

### As-Sweida 58,645

As-Sweida	58,645
-----------	--------

### Damascus 743,964

Damascus	688,744
Maysat	16,250
Najha	15,000
Zahera	820
unknown	23,150

### Dar'a 208,355

As Sanamayn	100,230
Dar'a	35,530
Izra'	62,595
Sanameen	10,000

# Operational Requirements

<b>PROJECT</b>	<b>BUDGET (US\$ million)</b>	<b>PLANNED BENEFICIARIES (million)</b>	<b>RECEIVED (US\$ million)</b>	<b>CURRENT SHORTFALLS (US\$ million)</b>
<b>Syria EMOP 200339</b> (October 2011 to 31 December 2014)	<b>1,509.3</b>	<b>4.25</b>	<b>813.2</b>	<b>696.1</b>
<b>Regional EMOP 200433</b> (July 2011 to 31 December 2014)	<b>1,729.9</b>	<b>2.7</b>	<b>945.7</b>	<b>784.2</b>
<b>Special Operation SO 200477</b> (July 2012 to 31 December 2014 )	<b>37.8</b>	<b>NA</b>	<b>18.3</b>	<b>19.5</b>

# Operational Requirements/2014

PROJECT	BUDGET (US\$ million)	PLANNED BENEFICIARIES (million)	RECEIVED (US\$ million)	CURRENT SHORTFALLS (US\$ million)
Syria EMOP 200339	915.5	4.25	289.6	625.9
Regional EMOP 200433	1040.5	2.7	390.5	650
Special Operation SO 200477	18.7	NA	2.5	16.2

# Resource Mobilization in 2014

## EMOP 200339- Syria

DONOR	AMOUNT (USD million)
USA	142.35
United Arab Emirates	26.00
United Kingdom	25.31
Canada	23.34
Germany	20.39
Kuwait	13.00
Switzerland	5.35
Saudi Arabia	5.00
Denmark	4.71
Japan	4.50
Russian Federation	3.00
Belgium	2.76
Norway	2.50
Ireland	2.07
France	1.99
Spain	1.38
<b>TOTAL</b>	<b>289.6 million</b>

**Net Funding Requirements  
(Sep-Dec 2014)**

**US\$ 123 Million**

**2014  
Gross Needs Funded**

**31.6%**

As of 1 September 2014

# Resource Mobilization in 2014

## REGIONAL EMOP 200433

DONOR	AMOUNT (USD million)
USA	262.50
United Kingdom	40.81
Kuwait	22.00
Canada	14.36
Germany	12.15
Japan	10.40
Saudi Arabia	8.57
United Arab Emirates	5.00
France	4.77
Netherlands	4.08
Denmark	1.80
Finland	1.37
Italy	1.36
Spain	0.55
Republic of Korea	0.50
Private Donors	0.24
Lithuania	0.05
<b>TOTAL</b>	<b>390.5 million</b>

**Net Funding  
Requirements  
(Sep-Dec 2014)**

**US\$ 317 Million**

**2014  
Gross Needs Funded**

**37.5%**

As of 1 September 2014



# Implementing Capacity

## Syria

**Staff:**

**205 in-country** (176 national, 29 international)

**WFP Offices:**

**Country Office:** Damascus

**Sub-offices:** Homs, Tartous, Aleppo, Qamishli

**Warehouses:**

7 operational in-country

**Cooperating Partners:**

SARC, 25 local NGOs, 1 international NGO (the Aga Khan Foundation)

## Sub-Region

**Staff:**

**389 in five countries** (284 national, 105 international)

**WFP Offices:**

**Country Offices and sub-offices** in each country

**Cooperating Partners:**

20 local and international NGOs

Respectively components of inter-agency **Syria Humanitarian Assistance Response Plan (SHARP)** and **Regional Refugee Response Plan (RRP)** WFP's Syria and sub-regional operations endorsed and supported by wide range of partners

As co-lead of food security cluster, WFP in forefront of forging **whole-of-Syria operational coordination**, involving all food assistance providers

WFP leads **Logistics Cluster and Emergency Telecommunication Cluster**

WFP member of **Comprehensive Regional Strategic Framework (CRSF)** Steering Committee, which has resilience focus

# Critical Risks

## CONTEXTUAL RISKS:

- Further deterioration of security conditions
- Population movements in Syria and/or sudden refugee influxes to neighbouring countries
  - Tension between refugees and host communities
- Insufficient funding
- Increased costs (incl. transport rates)

## PROGRAMMATIC RISKS:

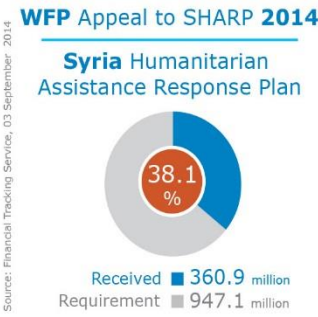
- Constraints to humanitarian access (incl. limited monitoring coverage)
  - Inadequate implementing partner capacity
  - Limited food availability regionally and insufficient prepositioning

## INSTITUTIONAL RISKS:

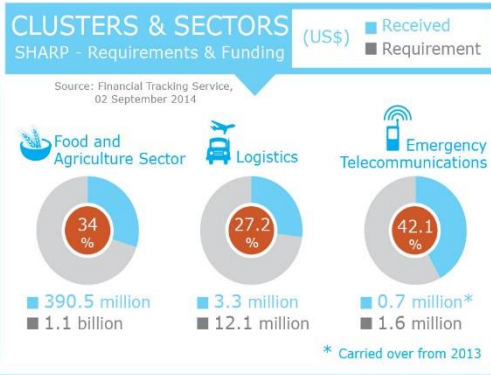
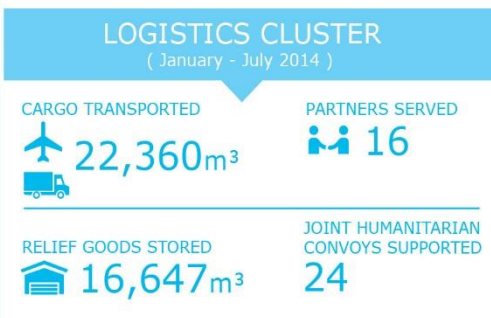
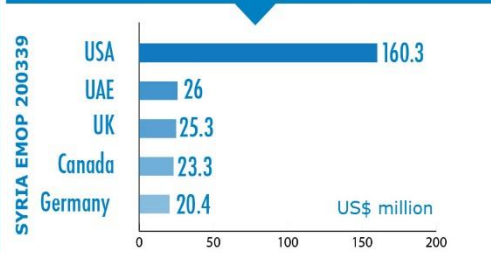
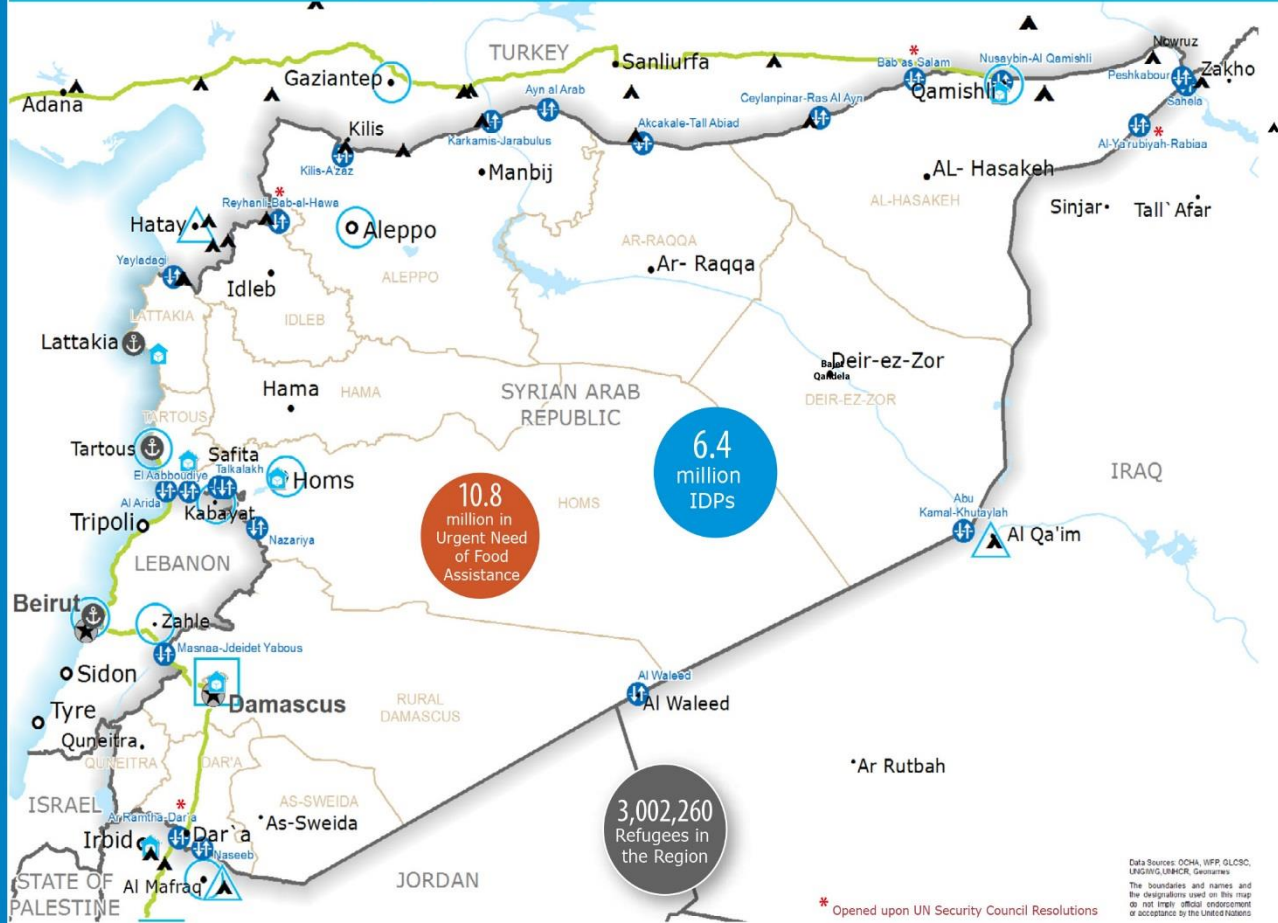
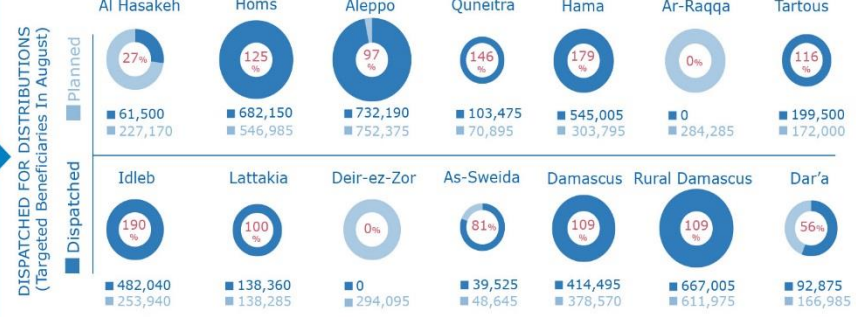
- Transfers used for unintended purposes (misappropriation)
- Negative media coverage
- Staff safety and security
  - Restrictive government policy changes (e.g. border closures)

# Mitigation Measures

RISKS	MITIGATION MEASURES
<p><b>Further deterioration of security conditions</b></p> <p><b>Access</b></p>	<ul style="list-style-type: none"> <li>• Remote management plans</li> <li>• Contingency planning and monitoring of risks</li> <li>• Communication with national authorities and different groups</li> <li>• Advocate for unhindered access</li> <li>• Cooperate and reach out to local authorities and communities</li> <li>• Expand the shortlist of qualified and reliable transporters</li> </ul>
<p><b>Population movements in Syria and/or sudden refugee influxes to neighbouring countries</b></p> <p><b>Restrictive government policy changes refugees and host communities tensions</b></p>	<ul style="list-style-type: none"> <li>• Needs monitoring</li> <li>• Flexible approach in operations &amp; Preparedness capacity</li> <li>• Close dialogue with all governments to ensure cooperation</li> <li>• Assistance to host communities in Lebanon</li> <li>• Voucher Programmes</li> </ul>
<p><b>Inadequate implementing partner capacity</b></p> <p><b>Limited food availability regionally</b></p>	<ul style="list-style-type: none"> <li>• Expand partner network</li> <li>• Strengthen IPs capacities/ provide necessary training</li> <li>• Step up advocacy in favour of increasing IP numbers</li> <li>• Augment storage infrastructure in and around Syria</li> </ul>
<p><b>Increased needs; limited funding</b></p> <p><b>Negative media coverage</b></p>	<ul style="list-style-type: none"> <li>• Continue switch to vulnerability targeting</li> <li>• Strengthened advocacy with donors (incl. GCC members)</li> <li>• Boosting quality and quantity of media outreach</li> <li>• Assess and choose capable and neutral IPs (due diligence)</li> <li>• Ensure quality needs assessments and distribution monitoring</li> </ul>



## BENEFICIARIES (August)



- Country Office
- Sub Office
- Warehouse
- Refugee / IDP Camp
- Road Supply Route
- Official Border Crossing Point
- National Capital
- Major Town
- Intermediate Town
- Small Town
- International boundary line
- Governorate Boundary
- Port



**WFP LEVEL 3 EMERGENCY**  
SINCE 14 DECEMBER 2012

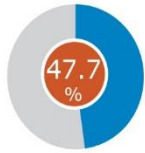
Contact: WFP.OPSCEN@wfp.org  
Website: www.wfp.org

# Syria Crisis - Regional Response Dashboard

Date created: 03 September 2014

## WFP Appeal to RRP6 2014

### Regional Refugees Response Plan



Received **415.2 million**  
Requirement **871 million**

### BENEFICIARIES (August 2014)

Planned  
Reached  
Reconciliation of figures Ongoing

#### Lebanon



880,245 Reached  
848,124 Planned

#### Jordan



631,000 Reached  
549,942 Planned

#### Turkey



225,000 Reached  
225,000 Planned

#### Iraq



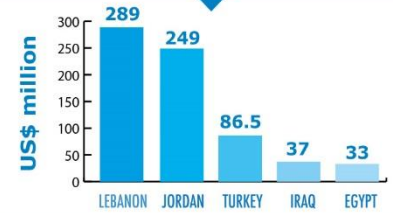
106,000 Reached  
107,000 Planned

#### Egypt

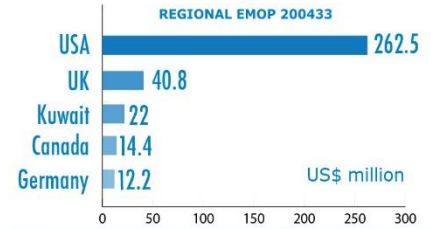


105,419 Reached  
113,634 Planned

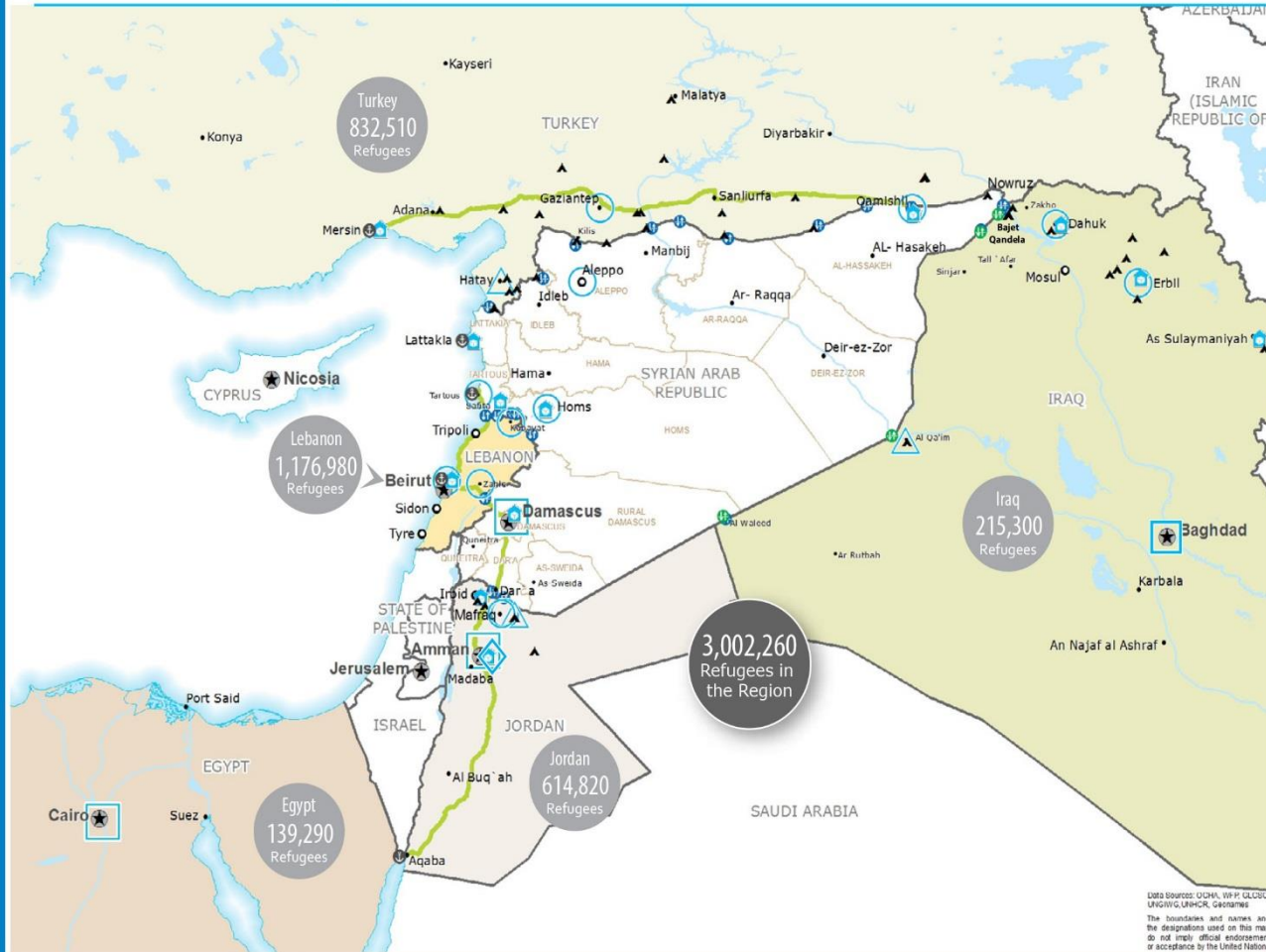
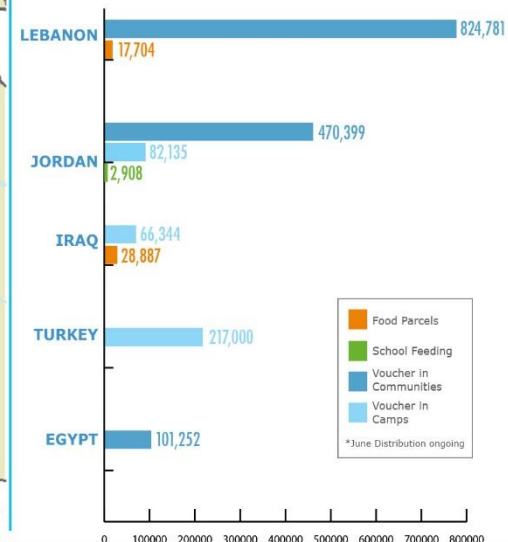
## \$ MONEY INJECTED INTO LOCAL ECONOMIES BY VOUCHER PROGRAMMES (Start of Operations - August 2014)



## \$ TOP 5 DONORS (02 September 2014)



## ASSISTANCE MODALITIES (August 2014)



Data sources: UNHCR, WFP, ILO, UNRWA, UNHCR, Geonames  
The boundaries and names and the designations used on this map do not imply official endorsement or acceptance by the United Nations

- Country Office
- Field Office
- Warehouse
- National Capital
- International boundary line
- Sub Office
- Regional Emergency Coordinator's Office
- Refugee Camp
- Major Town
- Governorate Boundary
- Official Border Crossing Point
- Intermediate Town
- Port
- Small Town

