



World Food Programme

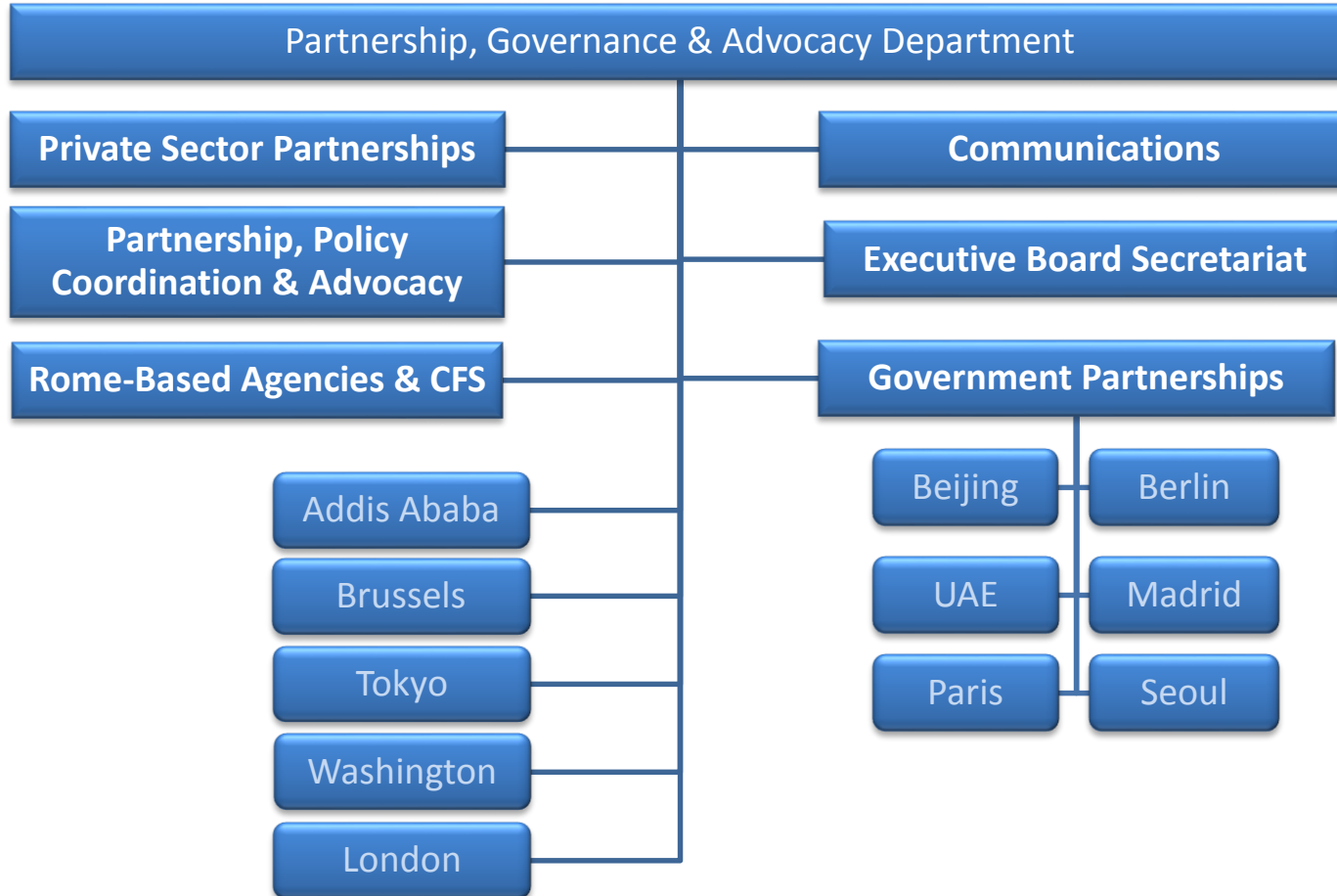
Government Partnerships Division (PGG)

***Induction Session
for Members and Observers of the
WFP Executive Board
12 January 2015***

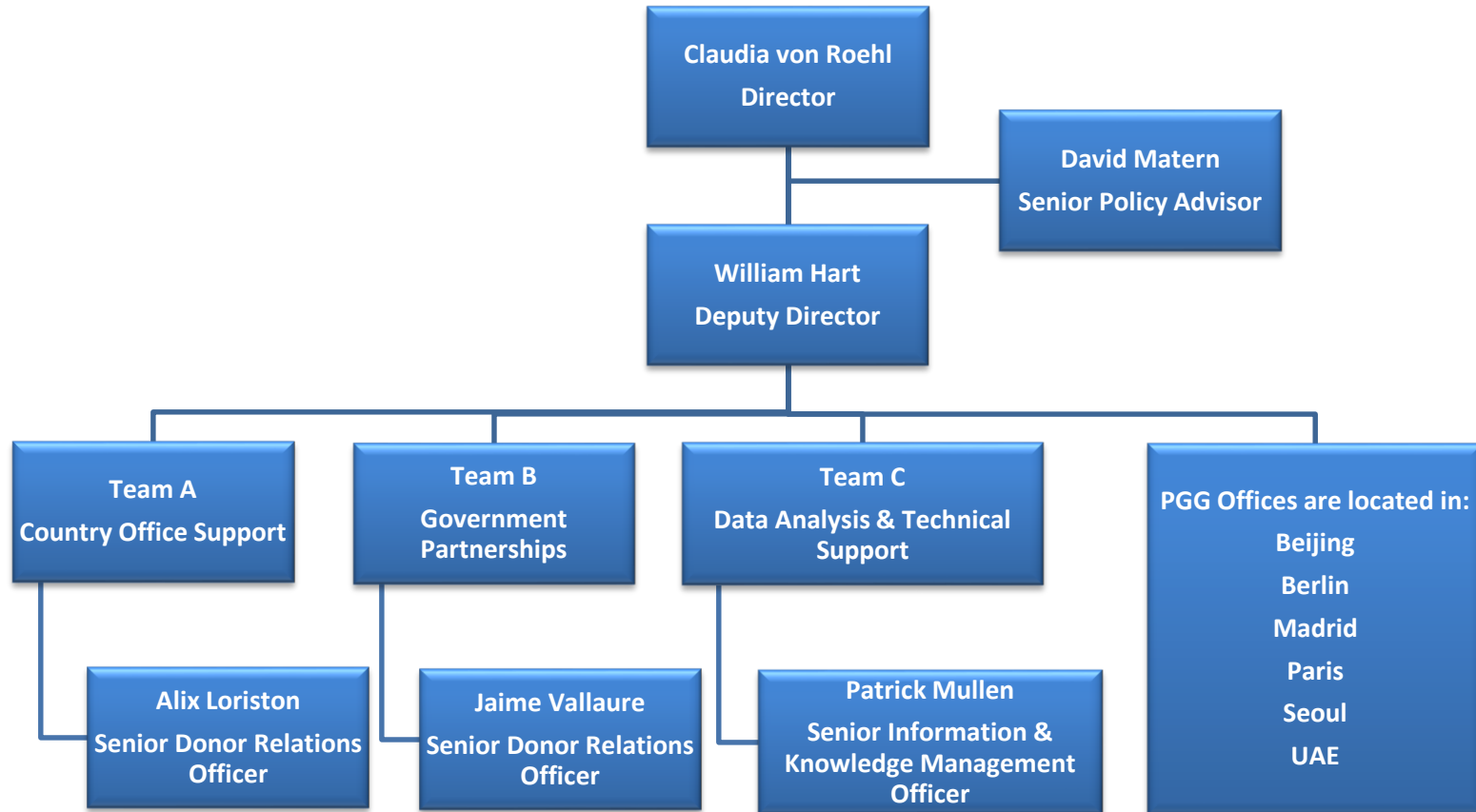
***Jaime Vallaura
Senior Donor Relations Officer***



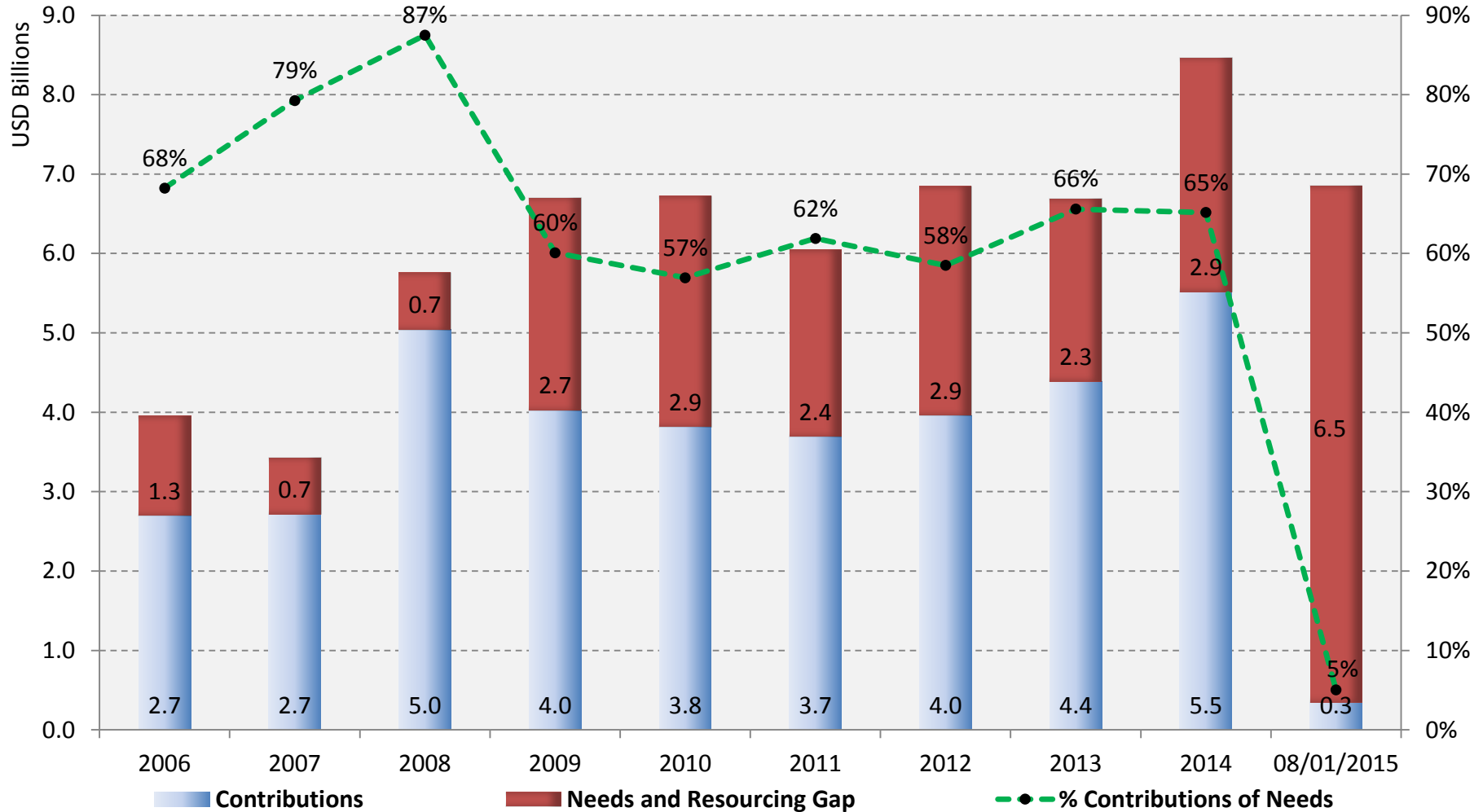
Organization: Partnership, Governance & Advocacy Department



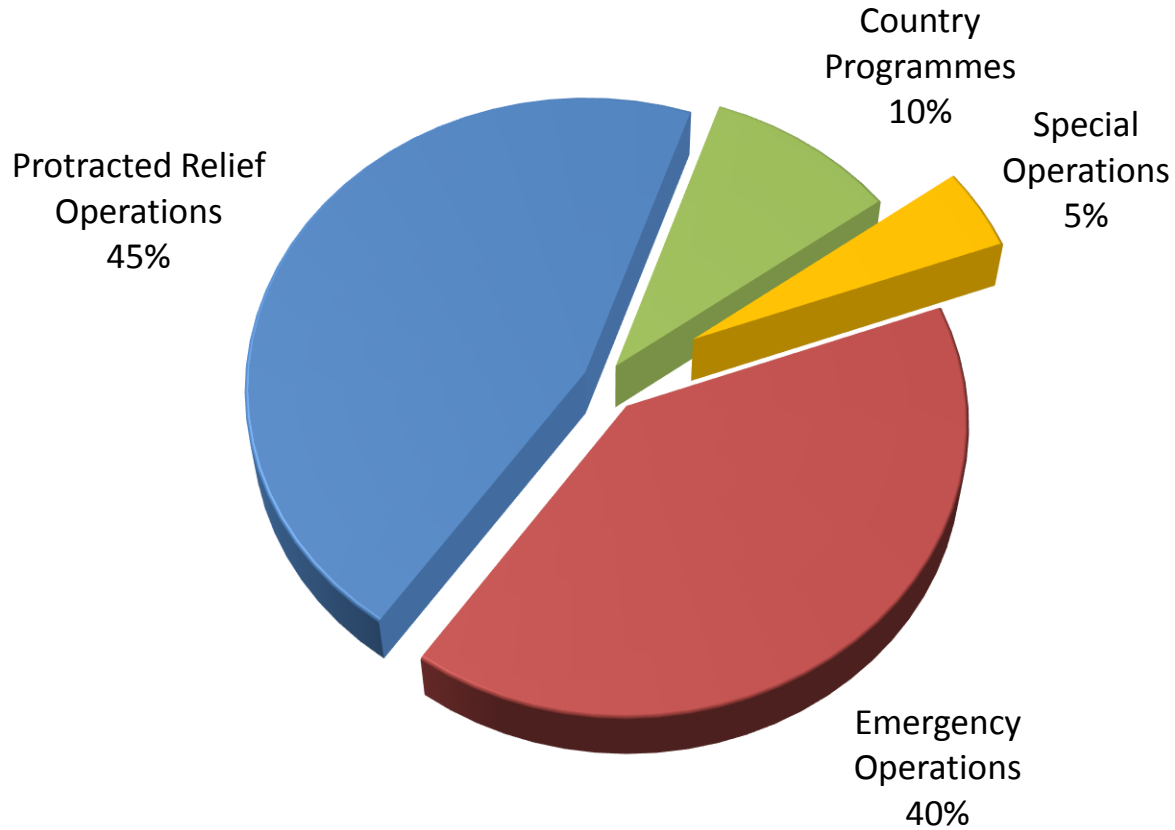
Organization: Government Partnerships Division



2014 was a record year



WFP's Gross Requirements in 2015: US\$6.9 billion

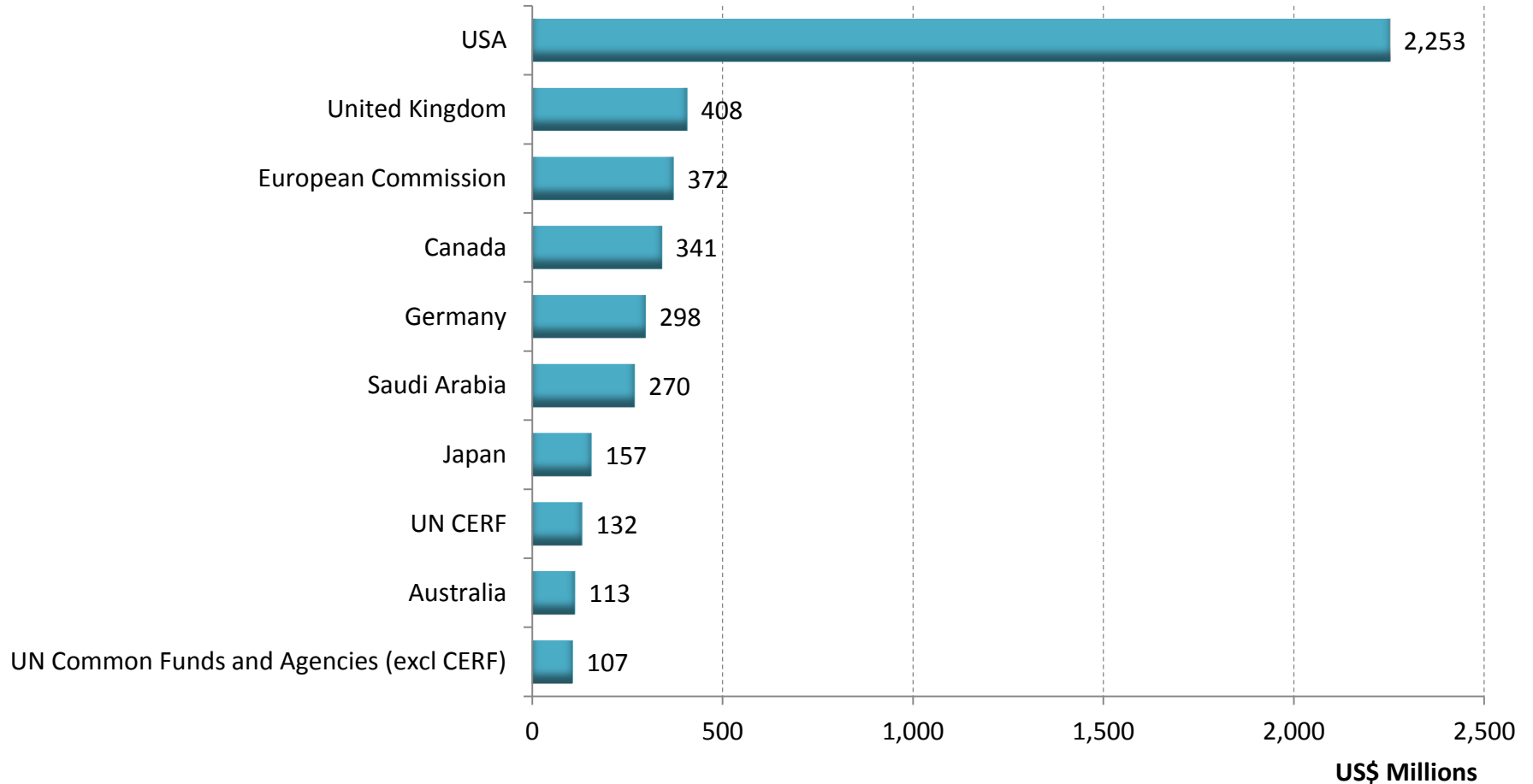


Top 10 Resource Partners in 2014

- Over 81% of WFP's funding came from the top 10 resource partners

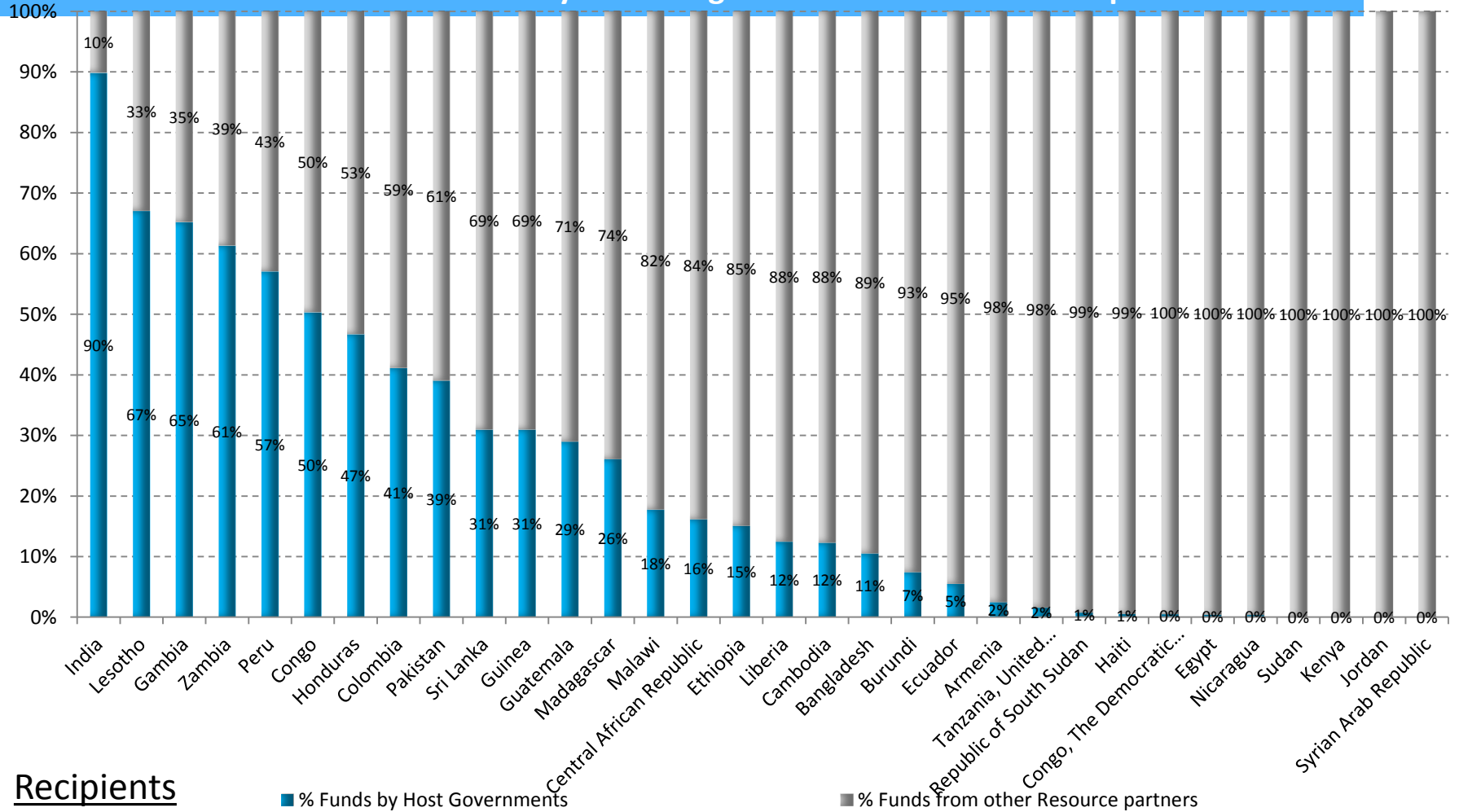


Total Confirmed Contributions in 2014



2014 Contributions by Host Governments

- 4% of the funds are contributed by the host governments where WFP is present



Recipients

■ % Funds by Host Governments

■ % Funds from other Resource partners

- Increase the **predictability** and **flexibility** of funding: e.g. through additional Strategic Partnership Agreements.
- Improve the resource pipeline, in particular, through more **advance financing**.
- Enhance and expand **partnerships** with long-standing and new partners alike, including host governments and emerging economies.
- Continue to pursue innovative **funding mechanisms**, through **twinning** and **debt swaps for development**. This present ways through which the potential of up-and-coming economies can be unlocked.