



Common Logistics Services & Logistics Cluster

EB Induction Session, 12 January 2015



Logistics – How we deliver

AIR

60 aircraft in the sky
on any given day

Strategic airlifts, airfreight
& food airdrops
in emergencies

(in 2013)



SEA

30 ships at sea
on any given day,

2 million mt of food
from 60 load ports
to 75 discharge ports
across 5 continents

(in 2013)



LAND

4,000 trucks
- incl 700 WFP trucks -
on the road any given day

3.1 million mt of food
transported by road
to over 650 warehouses

(in 2013)



Assisting the Humanitarian Community in 2014

Mandated

UNHAS

- 14 Special Operations
- 30,000 pax/month
- 330 mt of light cargo/month
- 220 regular destinations

UNHRD

- Strategic stock piling of relief items worth \$ 60 million
- 6 locations
- 65 humanitarian organisations registered as users
- Rapid response within 24 - 48hrs

LOGISTICS CLUSTER

- Coordination
- Information Management
- Transport/Storage services
- 9 active operations (simultaneous)

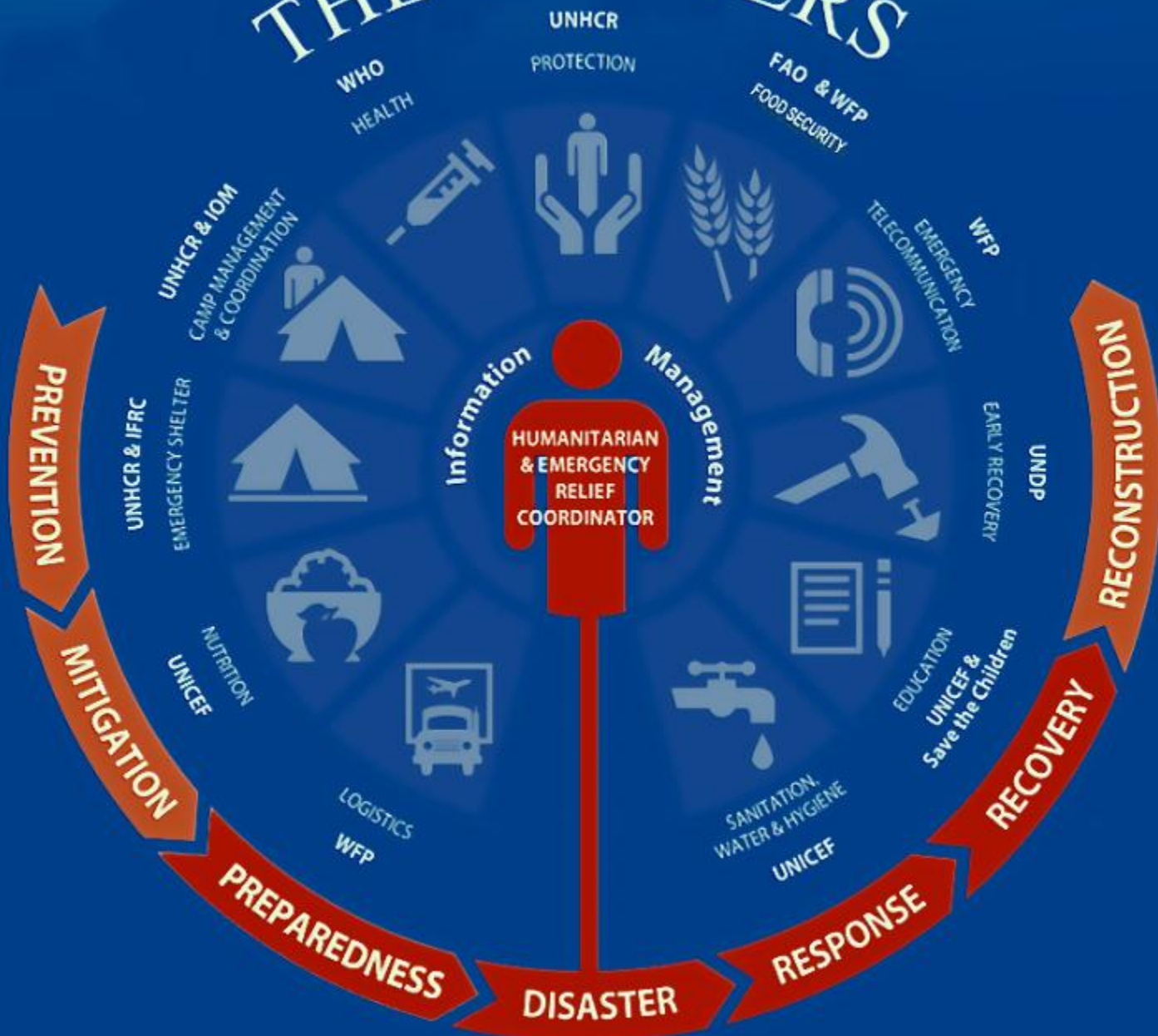
Bi-lateral

Upon request by Govt's & humanitarian partners

- Transport, storage, handling, fleet, workshop & fuel services
- Cost-recovery basis
- 80 clients in 20 countries



THE CLUSTERS



First Video

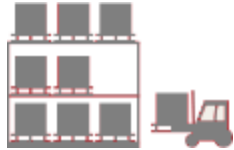
Logistics Cluster Operations 2013-2014



Logistics Coordination (also CivMil: Logistics Liaison)

Information Management (also Mapping and GIS)

Common Logistics Services (Air, Road, Sea transport and storage)



Storage
Services



Road and
vessel
transport



Air
Transport

Additional Services:

- Fuel provision
- Cargo Tracking
- Temperature Controlled Items (case by case basis)

Second Video (C&M)

www.logcluster.org



twitter.com/logcluster



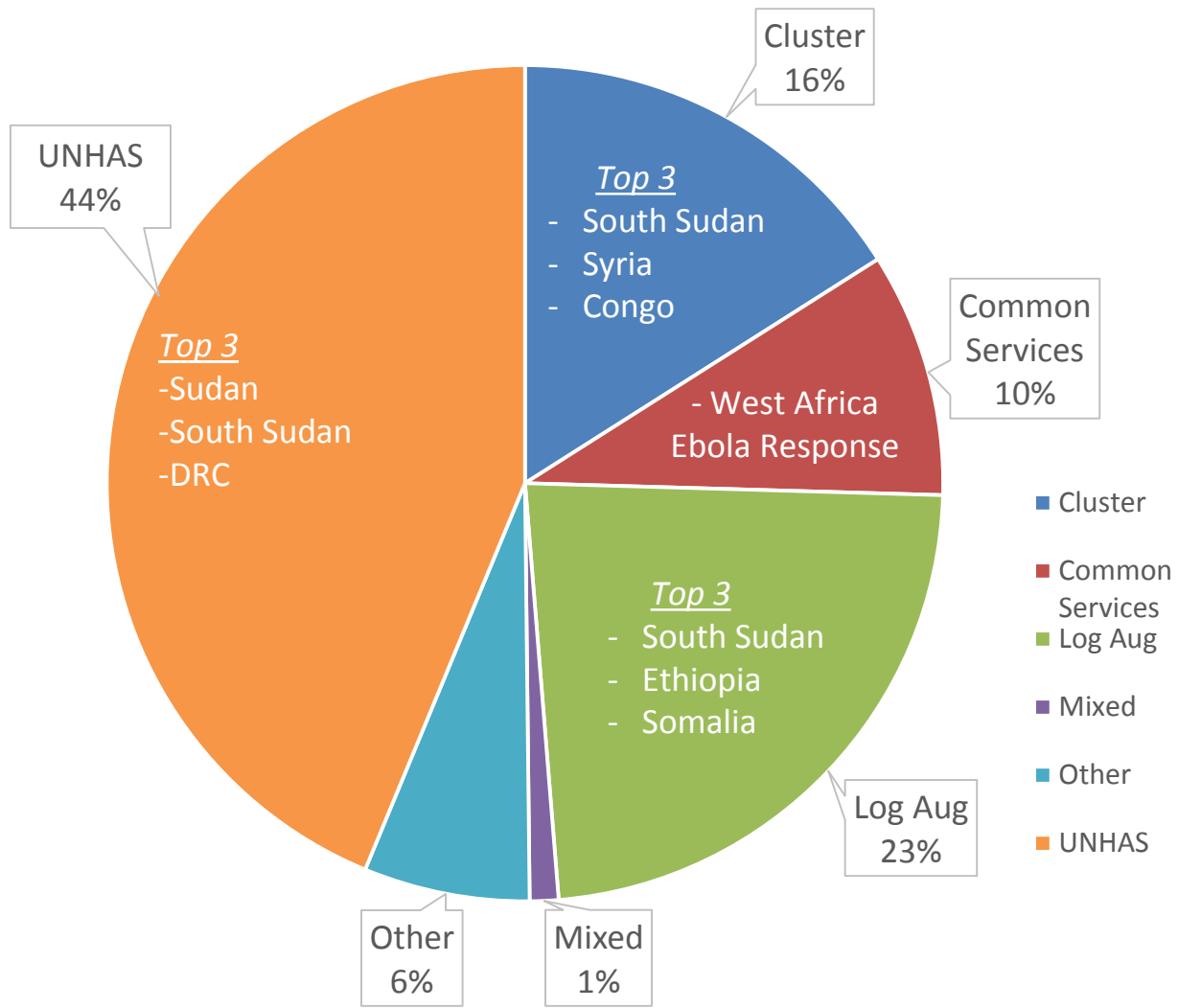
facebook.com/logcluster

Projects - funding mechanisms



- **Special Operations**
- **Cost-recovery**
- **Special Accounts**

Special Operations Project Category Types (Dec 2014)



- Why should WFP lead in CLS ?
- Why establish a dedicated division ?
- What services will be provided ?

Management of Common Logistics Services

– Example: Operation West Africa Ebola Outbreak



WFP World Food Programme

EBOLA EMERGENCY
Concept of Operations as of 18 November 2014

National Capital	Logistics Hub	Road Transport	Port	Primary Road	International Borders
Mix of Town	Coordination	Warehouse	International Airport	Secondary Road	Harbor
Freetown/Conakry/Torah	International Management	Emergency Support	Domestic Airport	Tertiary Road	Harbor
Small Town	Civil Coordination	UNHAS distribution base	Airbase	Railway	Whitebody

Logistics strategy

- **Regional hub** in Accra

- **National Hubs** in 3 capitals

- **12 Forward Logistics Bases** across the region

- **Satellites**

UNHRD



UNHRD *Humanitarian
Response Depot*



- UNHRD is procuring **construction material & equipment** for remote hubs, ETUs & CCCs
- Members of the **Rapid Response Team** deployed to provide technical assistance, training and help establish Staging Areas
- **Las Palmas & Accra** depots are serving as regional **Staging Areas**
- UNHRD Accra was **hosting UNMEER's HQ**
- **Relief items & support equipment** dispatched on behalf of 8 partners



UNHRD is a network of depots around the world (in Ghana, Italy, UAE, Malaysia, Panama, Spain) that procures, stores, manages and transports emergency items on behalf of the humanitarian community.

CARGO DISPATCHED



1624 MT

includes dispatches directly from suppliers

VALUE OF GOODS DISPATCHED

\$ 14.2 million (US)

TOTAL CONSIGNMENTS



87

PARTNERS SERVED



8



World Health Organization



Irish Aid
Department of Foreign Affairs
An Roinn Gealltaraíocht



wfp.org



UNHCR
The UN Refugee Agency



Swiss Red Cross
Croix-Rouge suisse
Cruz Roja Suiza



Routes of cargo dispatched since 21/03/2014

- UNHRD is procuring construction materials and equipment for remote logistics hubs, Ebola Treatment Units and Community Care Centres in all three affected countries, as well as facilitating direct deliveries from suppliers.
- The German Government is generously providing one C160 plane permanently based in Accra for UNMEER and UNHRD usage.
- Members of UNHRD's Rapid Response Team have been deployed to the affected countries to provide technical assistance, training and help establish staging areas.
- As part of WFP's Special Operation for the Ebola response, Las Palmas and Accra are serving as regional staging areas.



WFP Aviation



- **27 Strategic Airlifts** with large cargo aircraft from Accra, Brindisi, Cotonou, Dubai, North Carolina, Las Palmas, Liege, and Oslo **to the affected countries**
- Delivery of **food & non-food** items on behalf of UNHRD, WFP and partners
- Transport of support equipment such as **MSUs, ambulances** and **generators**.

UNHAS



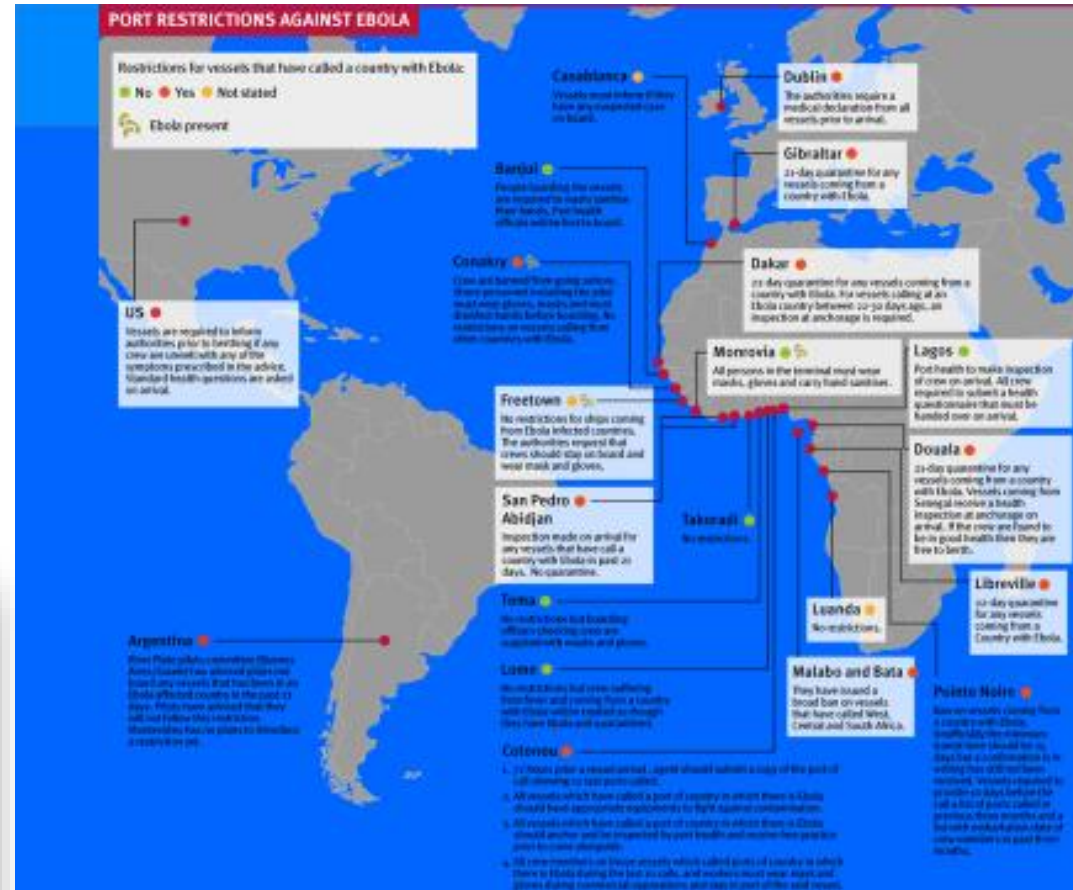
UNHAS
Humanitarian Air Service



- Regular fleet: **3 fixed-wing aircraft, 2 helicopter, 1 ad-hoc aircraft**
- **Links Conakry, Freetown and Monrovia** & other key field locations
- Flights between **regional hubs** Dakar/Accra and the affected countries
- **Coordination** with UNMEER and UNMIL, joint schedule
- Over **5,000 passengers** within first 5 months
- Health workers, NGO and UN agency staff, donors, diplomatic community, government partners and media.
- **50mt of light cargo**

Shipping

- Regional seaport restrictions
- Coordination of EU shipments in Brussels
- Private Sector in-kind donations



MV FALKENBERG, loading in Cotonou, Oct 2014

- WFP contracted its own time charter vessel

WFP Engineering

Building of Ebola Treatment Units in Guinea, Liberia and Sierra Leone, supporting UNMEER, WHO, MSF and other health actors



Installation of prefabs and ablution units as a temporary UN clinic at the UNDP compound

Logistics Cluster



- **Storage services** in Guinea, Liberia and Sierra Leone
- **Transport services** provided from main hubs to other strategic logistics locations based on needs
- **Facilitation** of coordinated and cost-effective **flights from a Staging Area** at **Cologne/Bonn** airport
- Information Management on strategic air transport in collaboration with UNICEF in Copenhagen (daily flight updates, info on available cargo space)
- Logistics **Coordination** Units in Monrovia, Freetown and Conakry and regular meetings with national structures, health actors, civ/mil, humanitarian community
- Provision of logistics **information** via mailing lists and dedicated webpage

QUESTIONS ?

Fighting Hunger Worldwide



World Food Programme