



**RESILIENCE ROADMAP
FOR WEST AFRICA
- 2 years on -**

***RBD Overview
WFP Executive Board
November 2015***

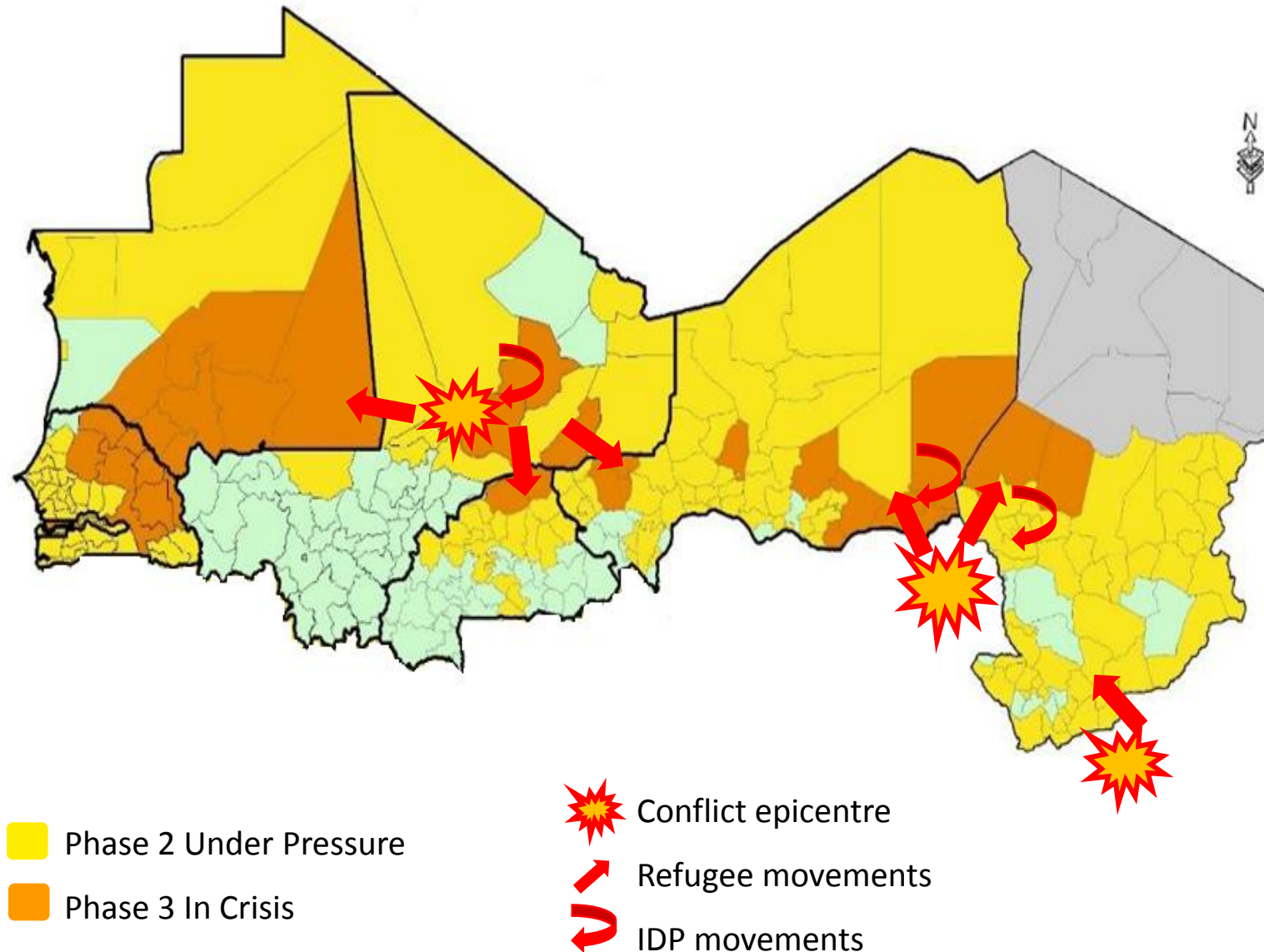


GUIDING PRINCIPLE OF RESILIENCE ROADMAP

“The guiding principle of the roadmap is that through a unified, integrated approach that addresses short and long-term vulnerabilities, WFP interventions can be implemented in a well-targeted, cohesive manner ... to improve the lives and livelihoods for populations caught in extreme poverty, hunger and malnutrition.”

- Roadmap for a Regional Approach for West Africa, October 2013

Context of 2015 Lean Season



But also

- National government leadership
- Continued engagement from donor community
- Strong strategic and operational partners
- Available data and research
- Growing WFP toolkit

BUILDING THE FOUNDATION

“Programmes need to be ‘wrapped around’ the communities where other activities concentrate, and communities must be part of the transformation, actively engaged in choosing, shaping, implementing and evaluating the hunger solutions that affect them.”

- Roadmap for a Regional Approach for West Africa, October 2013

NATIONAL
Integrated
Context
Analysis

SUB-NATIONAL
Seasonal
Livelihood
Planning

COMMUNITY
Community
Based
Participative
Planning

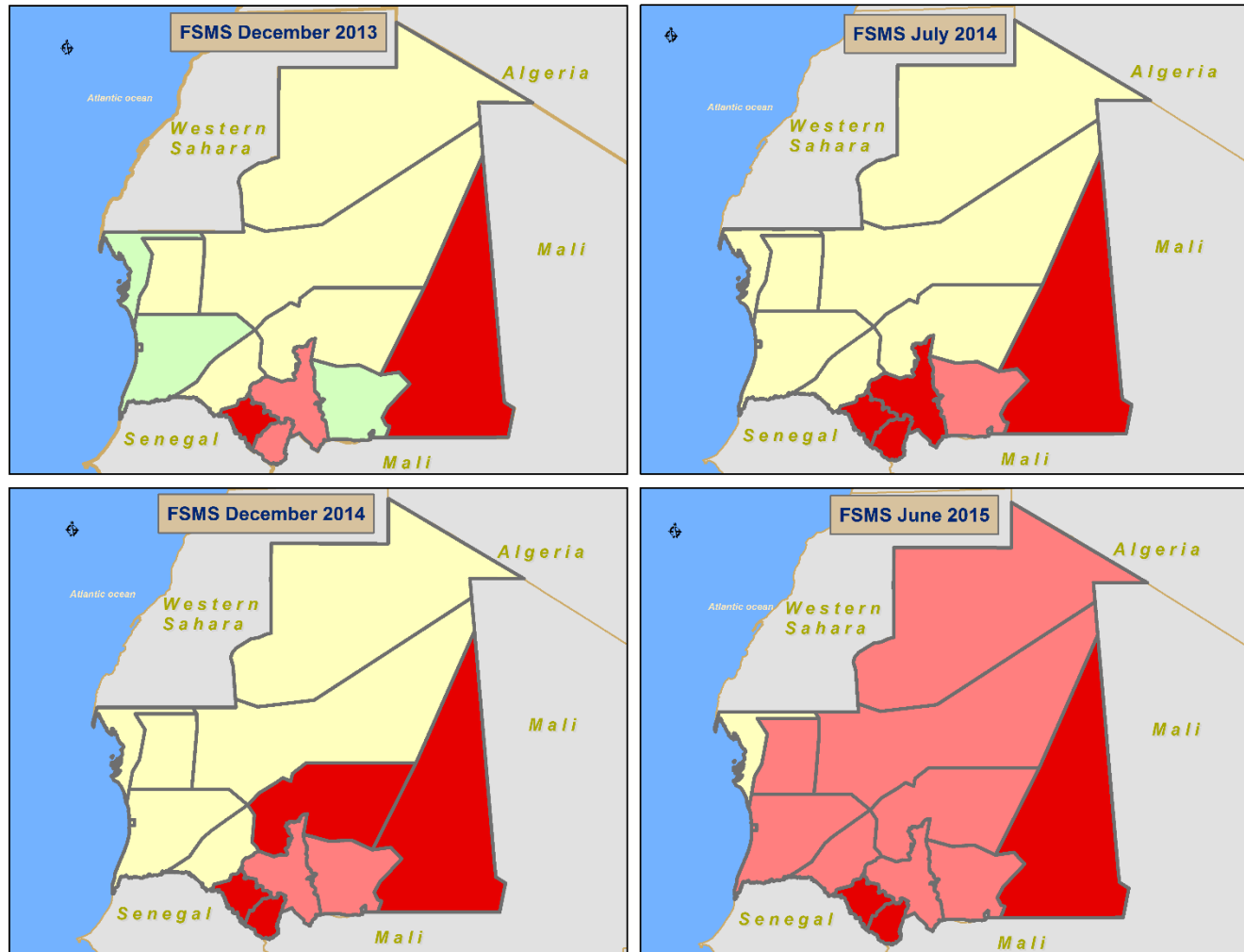


SYSTEMATIC DATA COLLECTION

“Consistent and sound analysis has been the key to appropriate responses and targeting in many of the countries in the region and an essential element in demonstrating the effect of WFP’s interventions.”

- Roadmap for a Regional Approach for West Africa, October 2013

Mauritania: Household food insecurity trend from last FSMS surveys - December 2013 to June 2015



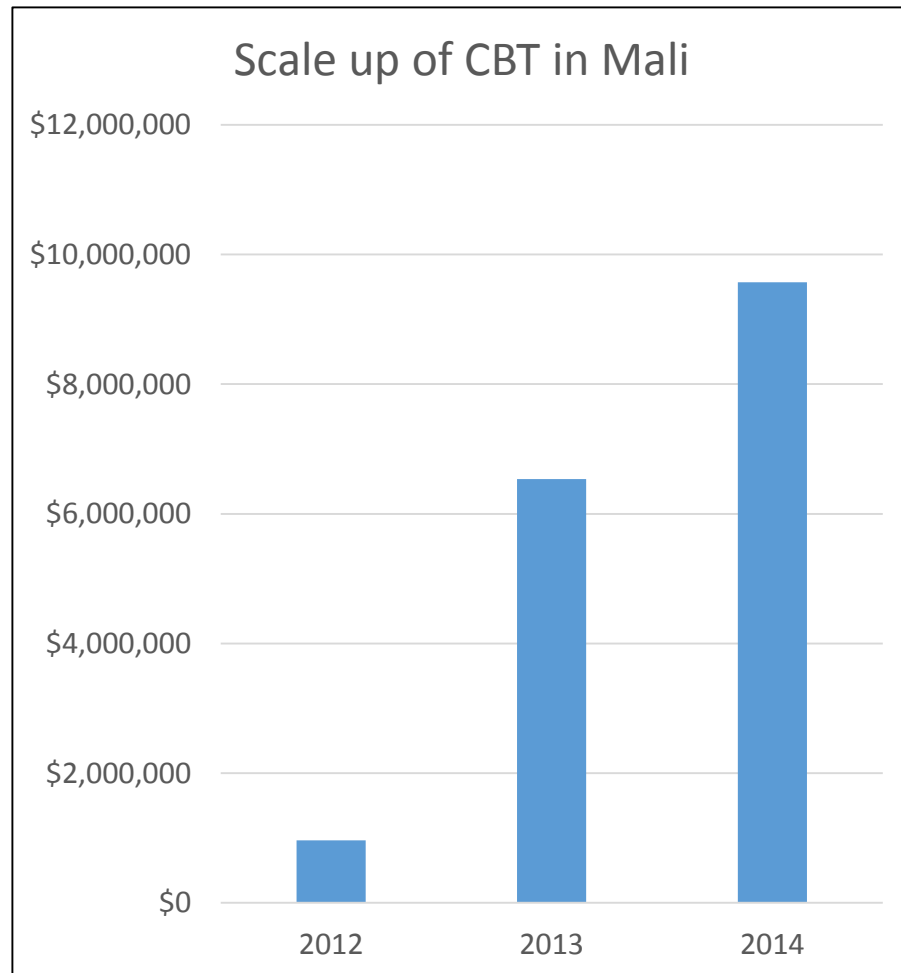
WHY:

- Monitor evolution of needs (over time; seasons; geographic and livelihood zones; and population groups)
- Inform interventions and programme tools
- Raise early warning

CASH-BASED TRANSFERS

“The experience gathered during the 2012 Sahel drought crisis response observed flexibility between cash and food as transfer modalities to be successful: the use of cash, when appropriate, ... reduced lead time for delivery of commodities to landlocked locations. Cash transfers also allowed people the choice of diversifying their diet.”

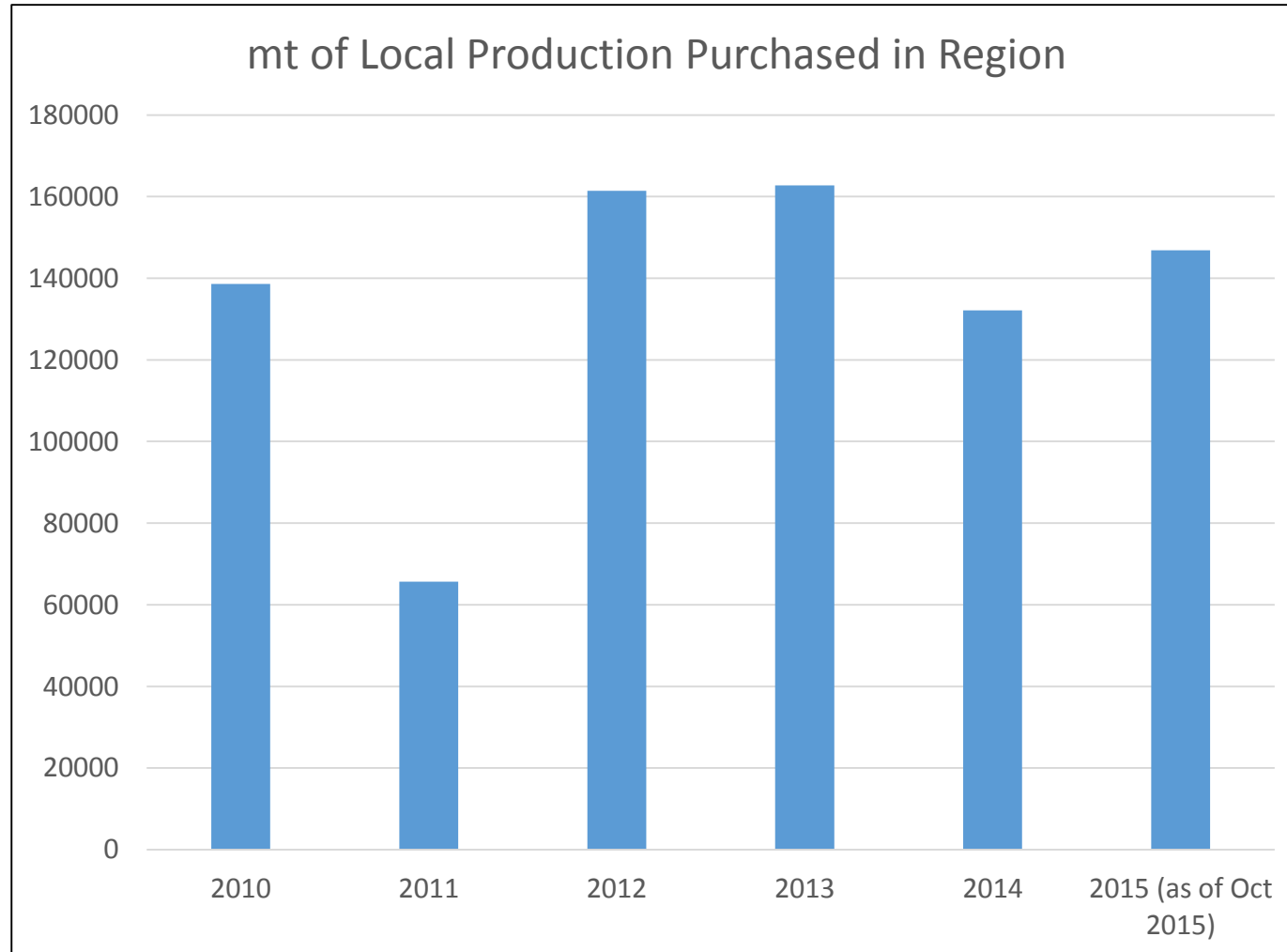
- Roadmap for a Regional Approach for West Africa, October 2013



LOCAL PROCUREMENT

“Local procurement from small-farmer initiatives ... have worked well in some countries, particularly where the interventions have been owned by the community, with good targeting and a focus on women.”

- Roadmap for a Regional Approach for West Africa, October 2013



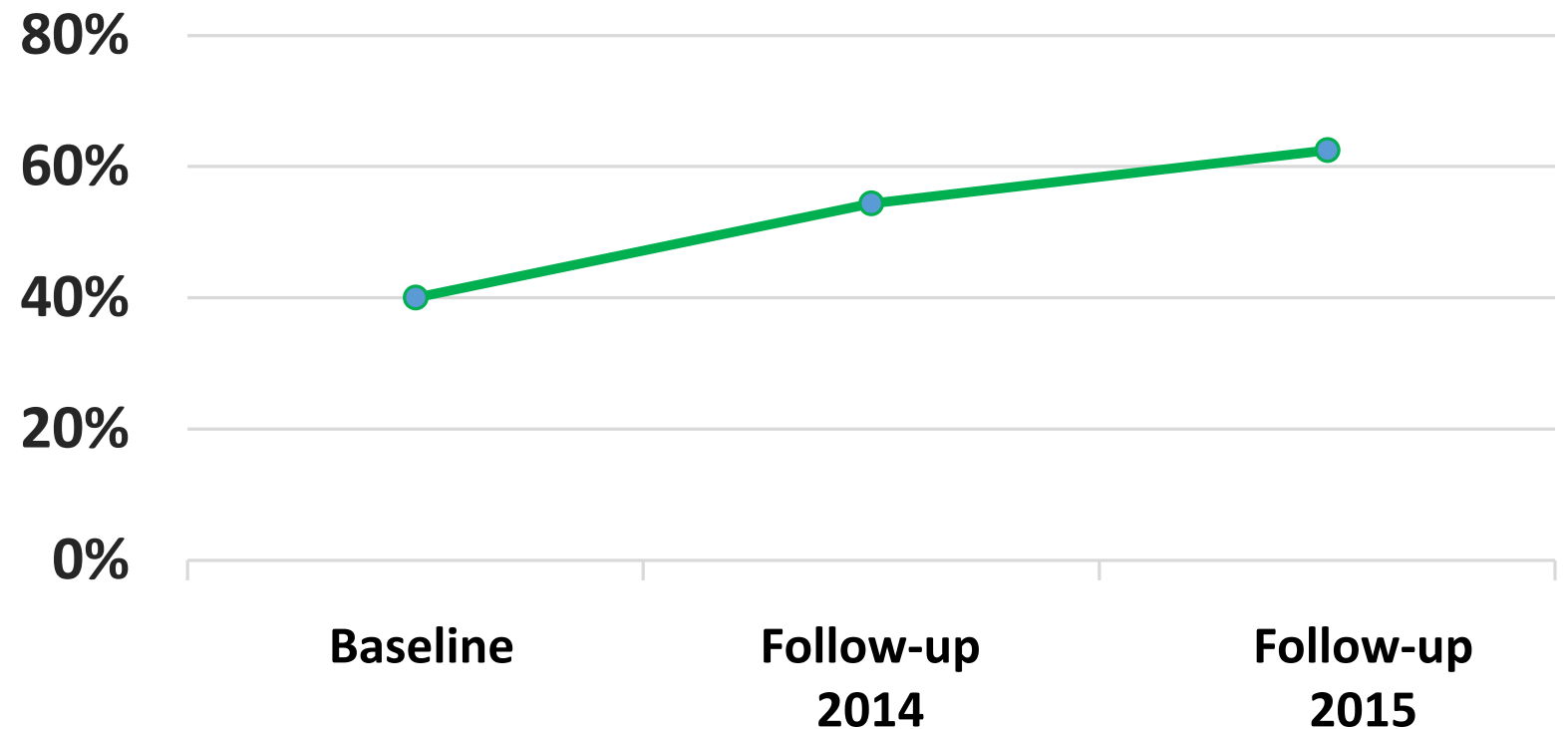
LONG-TERM IMPACT MONITORING

“Regular and disaggregated monitoring by WFP and partners is one of the most important tools to measure progress and impact of interventions.... ensuring that WFP be accountable to its beneficiaries, as well as its donors.”

- Roadmap for a Regional Approach for West Africa, October 2013



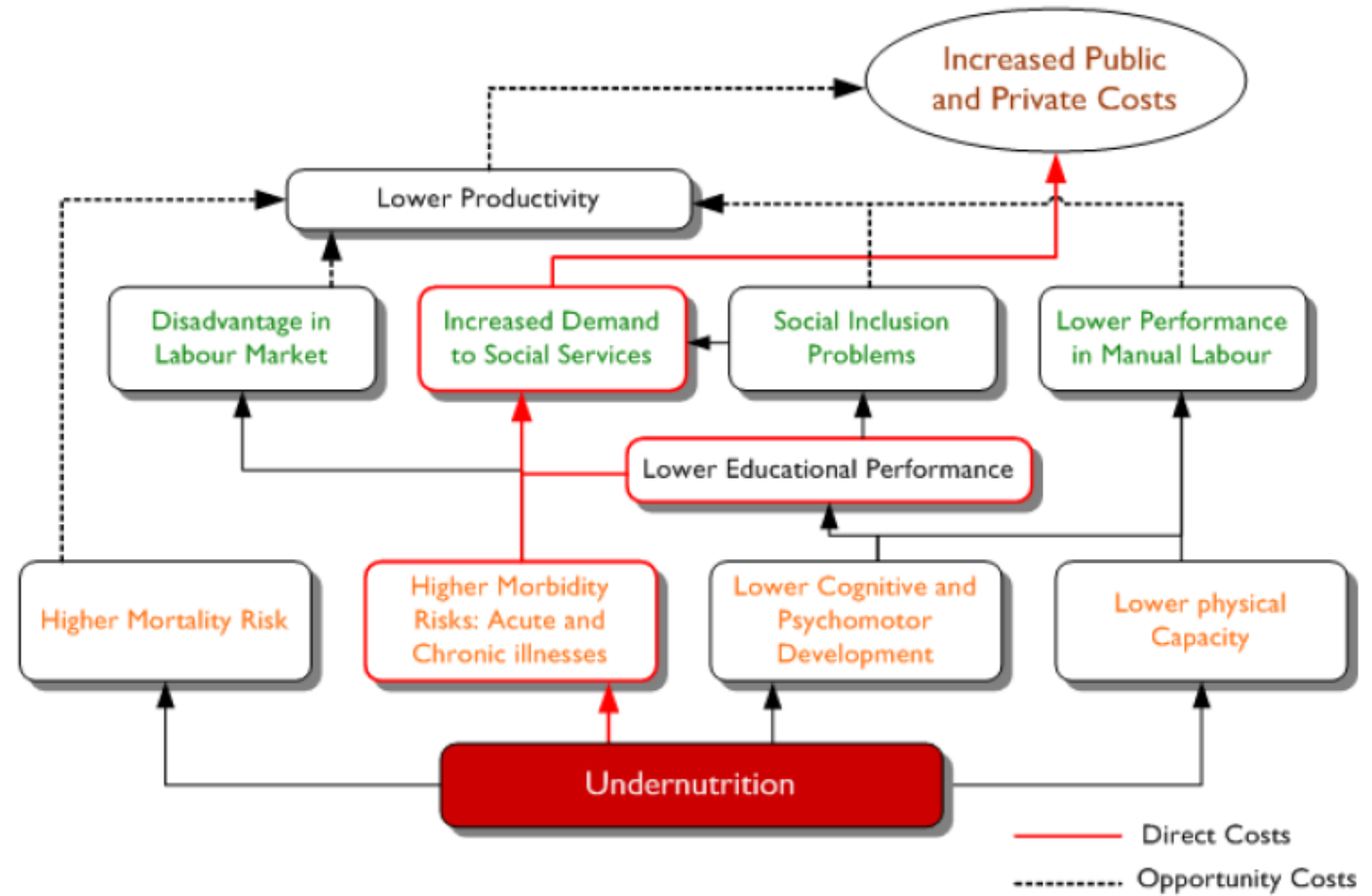
Percent of Very Poor Households Benefitting from Productive Community Assets



TOWARDS NUTRITION RESILIENCE



CONSEQUENCES OF UNDERNUTRITION



Source: *Cost of Hunger in Africa, 2015*

INTEGRATION WITH PARTNERS

“Addressing hunger and malnutrition and building last resilience requires a broad package Partnerships with a shared vision and commitment to building strong safety nets and resilience in West Africa must be strengthened.”

- Roadmap for a Regional Approach for West Africa, October 2013



“Insurance allows us to have the courage to cultivate on a large scale, without thinking to failure”



Resident of Colomba



THANK YOU – MERCI