

GLOBAL OVERVIEW

Presentation on the
2014 Second Quarterly Operational Briefing
24 April 2014

David Kaatrud
Director of Emergencies

Table of Contents

Yemen.....	2
Somalia.....	5
Democratic Republic of Congo (DRC).....	8
Mali	11
West Africa Ebola Outbreak.....	14

Yemen

Situation Analysis Security / Political Situation

Yemen has been in turmoil since mass protests forced long-term President Ali Abdullah Saleh to step down in 2012. The country is facing deteriorating security conditions, as the central government is challenged by the Houthis in the north, the Hirak separatist movement in the south, and different tribes engaging in clashes to force negotiations with the government. Al-Qaeda in the Arabian Peninsula (AQAP) threatens security by conducting attacks against the military, civilians and foreigners. The situation is expected to deteriorate because the National Dialogue Conference (NDC) results – aimed at addressing grievances of all the stakeholders – will be difficult to implement, with many parties dissatisfied with the outcome of the process. The Houthis are fighting in the north of the country in an apparent attempt to gain more territory before settling an agreement. In the Ad-Dahle Governorate, the situation is deteriorating as the government and the Hirak movement are engaged in fighting, impeding humanitarian access and generating new IDPs.

Food Security

About 22 percent of the population (4.5 million people) are severely food-insecure, while half of Yemeni children are chronically malnourished. Although food availability at the national level appears to be adequate, a substantial part of the population does not meet its food consumption needs because of lack of resources. Yemen has been severely affected by high food prices. Limited access to food is aggravated by the effects of low incomes, large family sizes, high unemployment, limited education, sanitation, qat consumption and geographic isolation.

Programming Situation

EMOP 200451: Emergency Food and Nutrition Support to Food Insecure and Conflict-Affected People - Over five million food insecure people in Yemen will be targeted in the first six months of 2014 by EMOP 200451. This figures includes 3.9 million beneficiaries who will be assisted through emergency safety net programs, 600,000 IDPs/returnees who will receive emergency assistance, and 682,000 children and pregnant/nursing women who will benefit from nutrition support.

PRRO 200636: Safeguarding Lives, Improving Food Security and Nutrition, and Building Resilience – The PRRO was approved by the executive board in February 2014, and will commence operations in July 2014. The PRRO aims to assist six million beneficiaries over two years at a cost of just over US\$491 million.

PRRO 200305: Relief Food Assistance to Refugees in Yemen - The PRRO provides Food Assistance to East African Refugees in Yemen. WFP is targeting 131,000 beneficiaries until December 2014.

DEV 200432: Food Assistance to Promote Girls' Education – DEV 200432 provides food assistance to promote the education of girls. The project will run until mid-2015, reaching 100,000 school girls and their families with take-home rations.

SO 200130: Air Passenger Service and Logistics Cluster Coordination in Support of the Humanitarian Response in Sa'ada - The SO is fully operational, providing four flights per month between Sana'a, Hudaydah and Sa'ada for humanitarian personnel and light cargo. It continues to distribute an average of 7,000 litres of fuel per month.

Access

Access remains a serious concern throughout the country, particularly in the northern, when insecurity persists. WFP Yemen has remained active and has continued to reach beneficiaries for March and April cycles through over 3,500 food distribution points and is reaching beneficiaries via alternative distribution modalities. Actual and attempted abductions of foreigners in the first months of 2014 have been unusually high. In late March 2014, two UN (non-WFP) staff members were released after having been abducted in central Sana'a.

Resourcing

There are no food shortfalls envisaged for EMOP 200451 until its end in June. However, US\$9m is still required to successfully complete operation. PRRO 200363, which will commence immediately after the cessation of EMOP 200451, still requires US\$462m (94 percent shortfall). PRRO 200305 needs US\$1.3m to meet requirements until the end of 2014. DEV 200432 is fully covered.

Capacity

WFP Yemen have maintained the operational capacities throughout the political and military turmoil and have continuously met their distribution commitments.

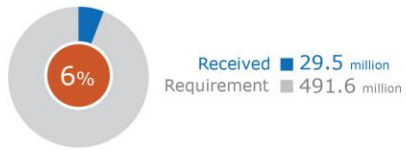
Inter-Agency

WFP is an active member of all inter-agency meetings and working groups, including the UN Country Team and the Security Management Team. WFP is also co-leading the Food Security and Agriculture and Logistics Clusters in Yemen. WFP works very closely with UNICEF in Yemen in both the planning and implementation of comprehensive nutrition services. The Logistics Cluster provides vital fuel delivery operations for humanitarian partners; UNHAS is also active.

Risks

- Fighting involving Houthi tribes and Salafist groups and/or Yemeni military.
- Fighting involving AQAP fighters and the Yemeni military,
- Fighting involving the Hiraq coalition fighters and the Yemeni military.
- Cut in oil production and exports.

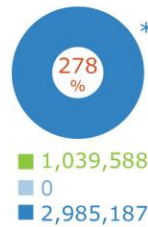
WFP PRRO 200636* 2014



*PRRO 200636 will replace EMOP 200451 in July 2014
EMOP 200451 has a shortfall of 20%; PRRO 200305 has a shortfall of 14%;
DEV 200432 has a shortfall of 19%; SO 200130 has a shortfall of 38%

BENEFICIARIES (as of Dec. 2013)

Planned
Not Reached
Reached



*Reconciliation ongoing for 2014 Distributions.

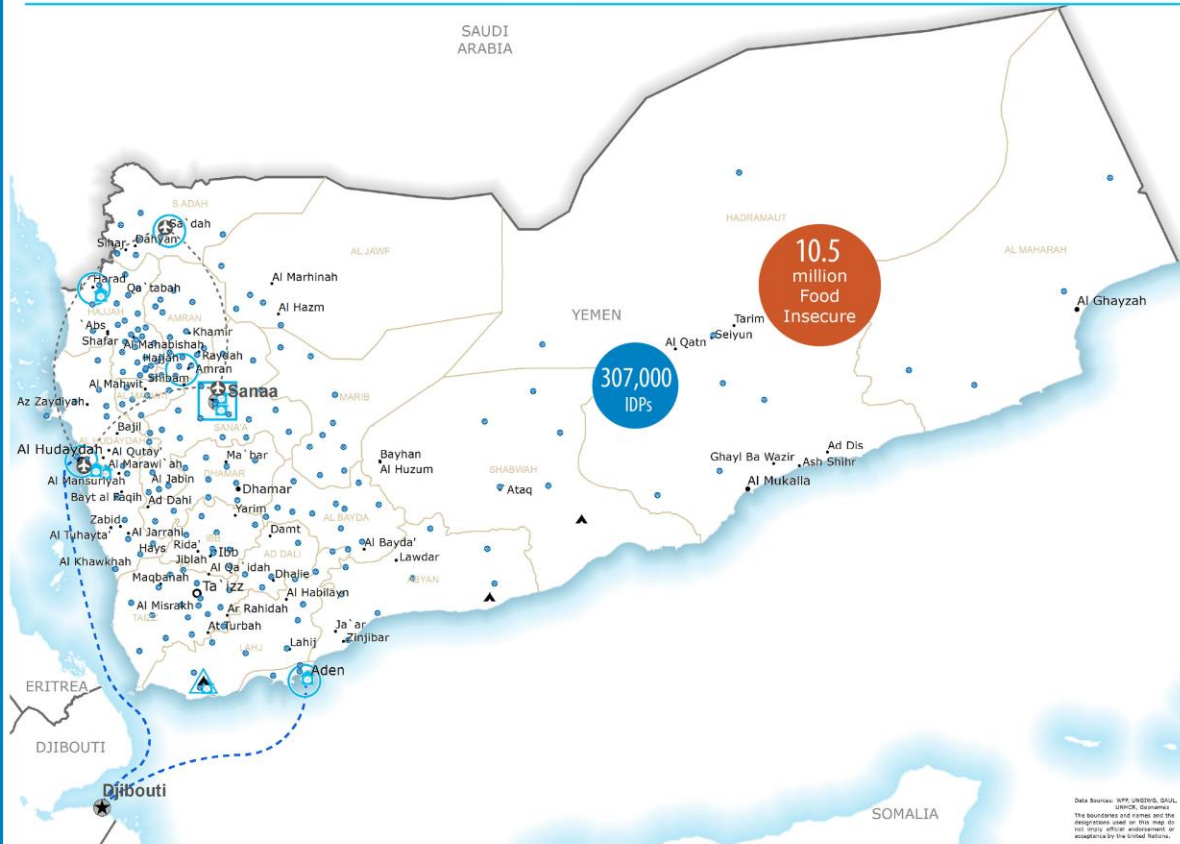


42%
food insecure

13%
children <5 wasted

22%
severely food insecure

47%
children <5 stunted



- Country Office
- Sub Office
- ▲ Field Office
- Food Distributions Points
- Warehouse
- ▲ Refugee / IDP Camp
- Road Supply Route
- ★ National Capital
- Major Town
- Intermediate Town
- Small Town
- International boundary line
- ⚓ Port
- ⚓ UNHAS Connection
- - - UNHAS Route

AIR PASSENGER SERVICE (March 2014)

PASSENGERS TRANSPORTED
94

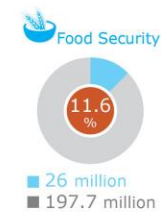
LIGHT CARGO TRANSPORTED
300kg

0
PEOPLE EVACUATED

HUMANITARIAN ENTITIES SERVED
14

CLUSTERS Requirements & Funding (USD)

Source: FTS, 23 April 2014



WFP
Clusters

WFP LEVEL 2 EMERGENCY
SINCE 30 July 2012
Contact: hq.situation.room@wfp.org
Website: www.wfp.org

Somalia

Situation Analysis Security Situation

In early March 2014, the African Union Forces in Somalia (AMISOM) and the Somali National Army (SNA) launched a large-scale military offensive against Al-Shabaab strongholds in south-western Somalia. The operations represent the joint forces' most significant advances since 2012 and have pushed Al-Shabaab out of several key towns in Gedo, Bakool, Hiraan, Lower Shabelle and Bay regions. In response, Al Shabaab has repeatedly pledged to increase retaliatory attacks. It has claimed responsibility for a number of recent attacks including on the intelligence headquarters, the presidential palace and a UN convoy near the Mogadishu International Airport (MIA). Analysts see the offensive is forcing Al Shabaab north into Puntland. On 07 April, two UN consultants were killed in a suspected targeted attack by two gunmen at Puntland's Galkayo airport.

Political Situation

On 21 January, new Prime Minister Abdiweli Sheikh Ahmed named a new Cabinet, following a vote in the Federal Parliament. Ahmed was appointed by President Hassan Sheikh Mohamud on 12 December, ending a government crisis that had raised significant concerns over security.

Food Security Situation

FSNAU's post Deyr 2013/2014 assessment, released on 03 February, found nearly 860,000 people are at Crisis and Emergency levels (IPC Phase 3 and 4) of food insecurity and require urgent humanitarian assistance over the next six months. The majority (75 percent) are IDPs and many are located in south-central Somalia. An estimated 203,000 children aged under five are acutely malnourished and 51,000 of those are severely malnourished. Over two million additional people are classified as facing Stressed (IPC Phase 2) levels of food insecurity. According to OCHA in early April, populations in regions affected by the SNA-AMISOM offensive are experiencing rising food prices and reduced availability of basic commodities.

Programming Situation

PRRO 200443 aims to strengthen food and nutrition security and enhance resilience, and runs from January 2013 to December 2015 with a total beneficiary load of 2.9 million people. In 2014, WFP is targeting 1.34 million people under the PRRO through nutrition, livelihood, relief and social safety net programmes. The PRRO has a shortfall of 73.5 percent.

SO 200440 supports the Food Security Cluster from September 2012 to December 2014. The SO has a shortfall of 62.8 percent.

SO 200507 supports the humanitarian air service (UNHAS) in Somalia and Kenya from January 2013 to December 2014. The SO has a shortfall of 52.5 percent.

SO 200475 was initiated in 2013 to develop logistics efficiency in Somalia and the Horn of Africa corridor. It is 100 percent unfunded.

Access

Insecurity and bureaucratic impediments continue to restrict humanitarian access. In late March OCHA reported that Al Shabaab retains control of some supply routes, despite the SNA-AMISOM offensive, which is hampering commercial activities and the delivery of humanitarian assistance. All WFP missions outside MIA require armed escorts. The relocation of WFP's core international staff to the country office in Mogadishu, initiated in June 2013, remains suspended due to insecurity.

Resourcing

From March to August 2014, PRRO 200443 is forecast to have a net shortfall of US\$12.3million. The project will therefore face critical pipeline breaks for all major commodities, except vegetable oil and CSB+, from August. These breaks will result in serious gaps in nutrition and livelihoods interventions throughout the country.

Capacity

WFP Somalia has 447 staff members (69 international, 378 national) who are operating through a country office based in both Nairobi and Mogadishu, five area offices in Mogadishu, Galkayo, Hargeisa, Bossaso and Dolow and sub-offices in Berbera and Garowe. Local partners monitor interventions in areas where WFP has limited or no access.

Inter-Agency

WFP works closely with FAO and UNICEF on implementation of the Joint Resilience Strategy for Somalia which establishes a strategic alignment of programming between the three agencies with the aim of significantly increasing resilience in vulnerable communities. WFP also works with UNHCR to support the voluntary repatriation of Somali refugees living in Kenya by providing food rations as part of a package of assistance to returnees.

Risks

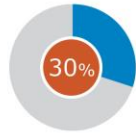
- Armed conflict in Somalia involving the military, AMISOM and Al Shabaab
- Armed conflict in Somalia involving Somali clans
- Somali returnees affected and targeted by Al Shabaab in Jubaland
- Low Deyr harvest
- Supply reductions due to Al-Shabaab
- Drought in the southern half of Somalia

Somalia Dashboard

Date created: 23 April 2014



WFP PRRO 200443
Jan 13 - Dec 15

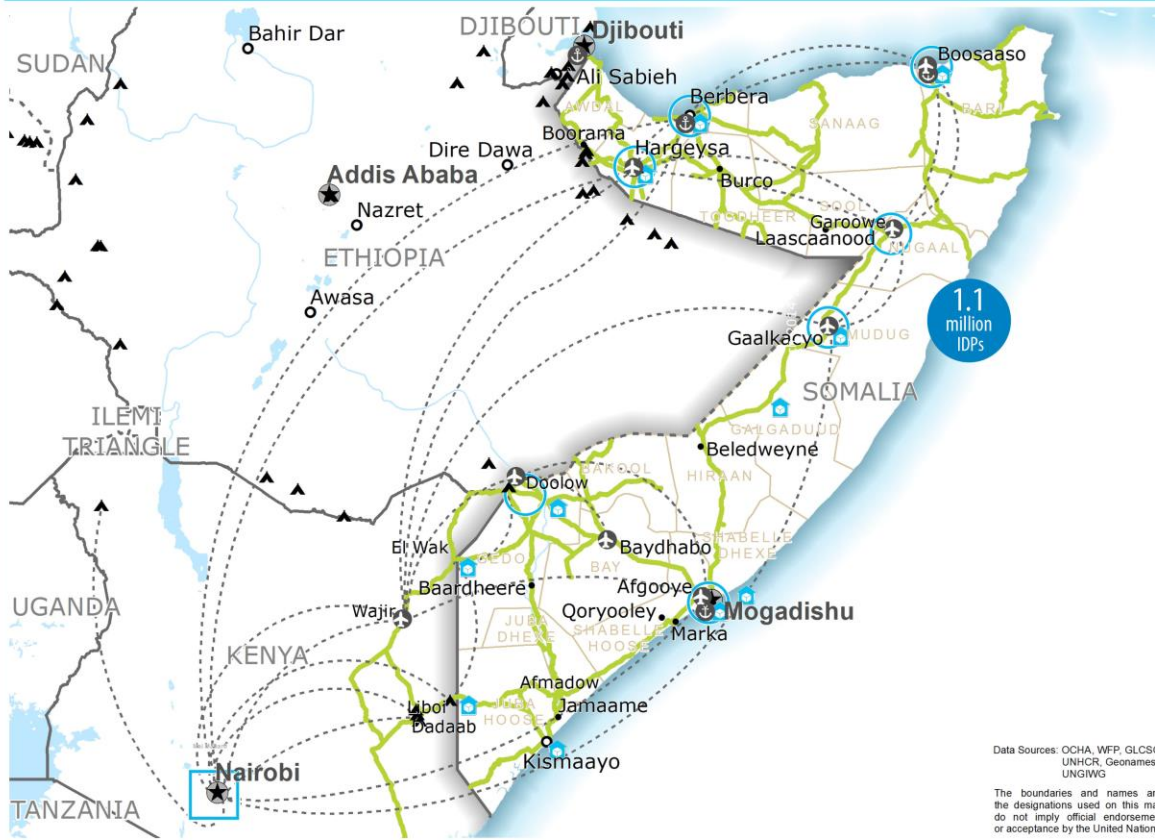
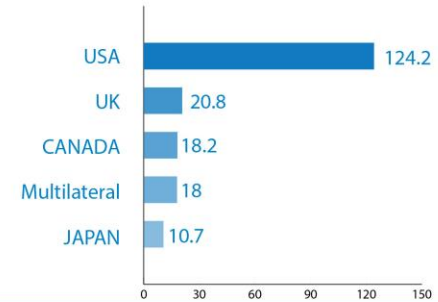


Received ■ 259.5 million
Requirement ■ 864.3 million

BENEFICIARIES
(March 2014)

521,507
Reached

TOP 5 DONORS
(PRRO 200443)
US\$ million

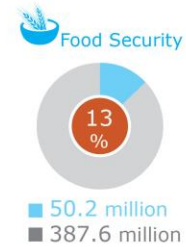


Data Sources: OCHA, WFP, GLCSC, UNHCR, Geonames, UNGIWS
The boundaries and names and the designations used on this map do not imply official endorsement or acceptance by the United Nations.

- Country Office
- Sub Office
- △ Field Office
- ⊕ Food Distributions Points
- 🏠 Warehouse
- ▲ Refugee / IDP Camp
- 🛣️ Road Supply Route
- ★ National Capital
- Major Town
- Intermediate Town
- Small Town
- International boundary lin
- 🚢 Port
- 🌐 UNHAS Connection
- UNHAS Route

CLUSTERS
Requirements & Funding (US\$)

Source: Financial Tracking Service, 22 April 2014



UNHAS (March, 2014)
Somalia and Kenya joint operation

PASSENGERS TRANSPORTED
3,524

LIGHT CARGO TRANSPORTED
18.5MT

2 PEOPLE EVACUATED

HUMANITARIAN ENTITIES SERVED
113

WFP
Clusters

WFP LEVEL 2 EMERGENCY
SINCE 02 August 2012
Contact: hq.situation.room@wfp.org
Website: www.wfp.org

Democratic Republic of Congo (DRC)

Situation Analysis

Security / Political Situation

MONUSCO and FARDC are targeting ADF-Nalu, the Allied Democratic Forces with the National Army for the Liberation of Uganda, as well as the FDLR, the Democratic Forces for the Liberation of Rwanda, which could lead to additional displacement. OCHA reports around 17,000 new IDPs in February 2014 in anticipation of MONUSCO's military operations in North Kivu, while UNICEF reports 6,000 new IDPs in South Kivu since mid-January 2014 due to rebel activities. The UN Security Council extended MONUSCO's mandate for another year granting additional troops to be deployed to eastern DRC and the Katanga province. In Katanga, the Mayi Mayi Kata Katanga (MM KK) group gained control over considerable parts of north and central Katanga, targeting the mineral-rich Manono, Pweto and Mitwaba Territories. The latest MM KK attacks in early March 2014 displaced around 15,000 people in Manono, Pweto and Mitwaba.

Food Security

Conflict in the south and eastern regions are causing uncertainty in local markets, which are in turn experiencing food price spikes of main staples like rice and maize. The main reason behind higher price fluctuations is based on speculation caused by the uncertainty of violence. Supply of food is not a critical problem thanks to normal harvest and food imports from Uganda. Prices in the capital remain stable and have not eroded purchasing power as they have in the conflict areas. There is a higher risk that conflict induced unemployment and loss of coping assets will affect medium to long term food security status in the conflict regions aggravated by the lack of safety nets present in the country.

Programming Situation

WFP is currently providing assistance – via food and cash and vouchers - to some 1.9 million people across DRC. These include IDPs, refugees, children in school, and mothers and children who are either malnourished or at risk of malnourishment.

PRRO 200540: Targeted Food Assistance to Victims of Armed Conflicts and other Vulnerable Groups (Jul 13 – Dec 15) aims to assist 4.2 million beneficiaries, providing life-saving food assistance for IDPs, refugees, children in school, and mothers and children who are either malnourished or at risk of malnourishment. In January WFP reached 984,480 beneficiaries, which represents 70 percent of the initial target.

SOP 200504: Provision of Humanitarian Air Services in DRC (UNHAS, Jan 13 – Dec 14) provides reliable links between the capital and the eastern provinces, as well as access to deep-field locations within the eastern provinces and in Equatorial province. The movement of passengers and cargo has exceeded targets and continues to increase.

SOP 200456: Logistics Cluster Coordination and Road Infrastructure Repairs in Support of WFP and the Humanitarian Community in the Democratic Republic of Congo (Jul 12 – Dec 14) provides air and road transport,

rehabilitation of roads and bridges, as well as storage facilities to humanitarian partners and the Government Ministries.

Innovation: In January WFP launched the Mobile Vulnerability Analysis Mapping (mVAM) pilot in Mugunga 3, a camp for IDPs in North Kivu. Two operators in Goma will call 300 households each month on WFP-distributed phones, with questions about **Access**

Equateur province: Transporting commodities for C.A.R. refugees continues to be a challenge due to poor road conditions and the low water levels of the Ubangi River.

Katanga Province: WFP and other humanitarian agencies face difficulties in accessing the communities due to widespread insecurity.

Resourcing

The resourcing of the PRRO is 26 percent funded against a total requirement of US\$478 million until the end of December 2015, and 44 percent funded against the US\$194 million budgeted for 2014, and is thus facing a very severe resourcing constraint. WFP requires US\$48.5 million to fund the operation until August 2014. The expected shortfall for the next six months is more than 15,000 MT of food and US\$8 million for cash and voucher assistance.

Capacity

Due to a lack of funding WFP is also starting a significant down-scale of activities, identifying priority interventions from March until the end of PRRO (December 2015), with a focus on Katanga, Orientale, North and South Kivu provinces and refugees in Equateur province in the north-west. However, WFP is expected to run out of food in April for its programmes in most of the country, including both Kivu provinces and Katanga. During March a closure process of 6 sub-offices has been ongoing. The next step may be ration reductions, which might take place as soon as in May due to the major, almost chronic, resourcing issues. Cash and Vouchers interventions remain a valid intervention modality for North and South Kivu as the markets in these regions are functioning.

Inter-Agency

An inter-agency appeal is being prepared, targeting 133,586 beneficiaries, in which WFP is targeting vulnerable host communities with nutrition, food for work and school meal interventions. The Logistics Cluster has completed an airstrip rehabilitation project allowing humanitarian access to the very isolated areas in Northern Maniema. A Joint-Assessment Mission (JAM) is planned between WFP, UNHCR, and UNICEF to the northeast of the country to review the condition of C.A.R. refugees.

Risks

DRC (east): Armed conflict involving rebel groups, FARDC and MONUSCO – also affecting Uganda, Rwanda and Burundi;

DRC (Katanga): Armed conflict involving MONUSCO, FARDC and Mayi Mayi Kata Katanga

Other: Increased volcanic activity has been observed on Nyamulagira Volcano near Goma, North Kivu. Potential effects of a major eruption could create a humanitarian crisis.

Democratic Republic of Congo Dashboard

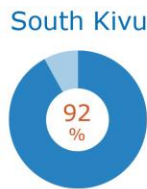
Date created: 23 April 2014



278,693 Reached
0 Not Reached
201,875 Planned



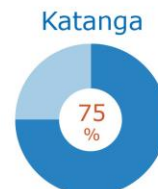
112,505 Reached
14,819 Not Reached
127,324 Planned



237,731 Reached
20,988 Not Reached
258,719 Planned



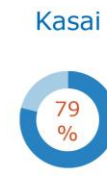
260,756 Reached
2,896 Not Reached
263,652 Planned



311,476 Reached
105,453 Not Reached
416,929 Planned

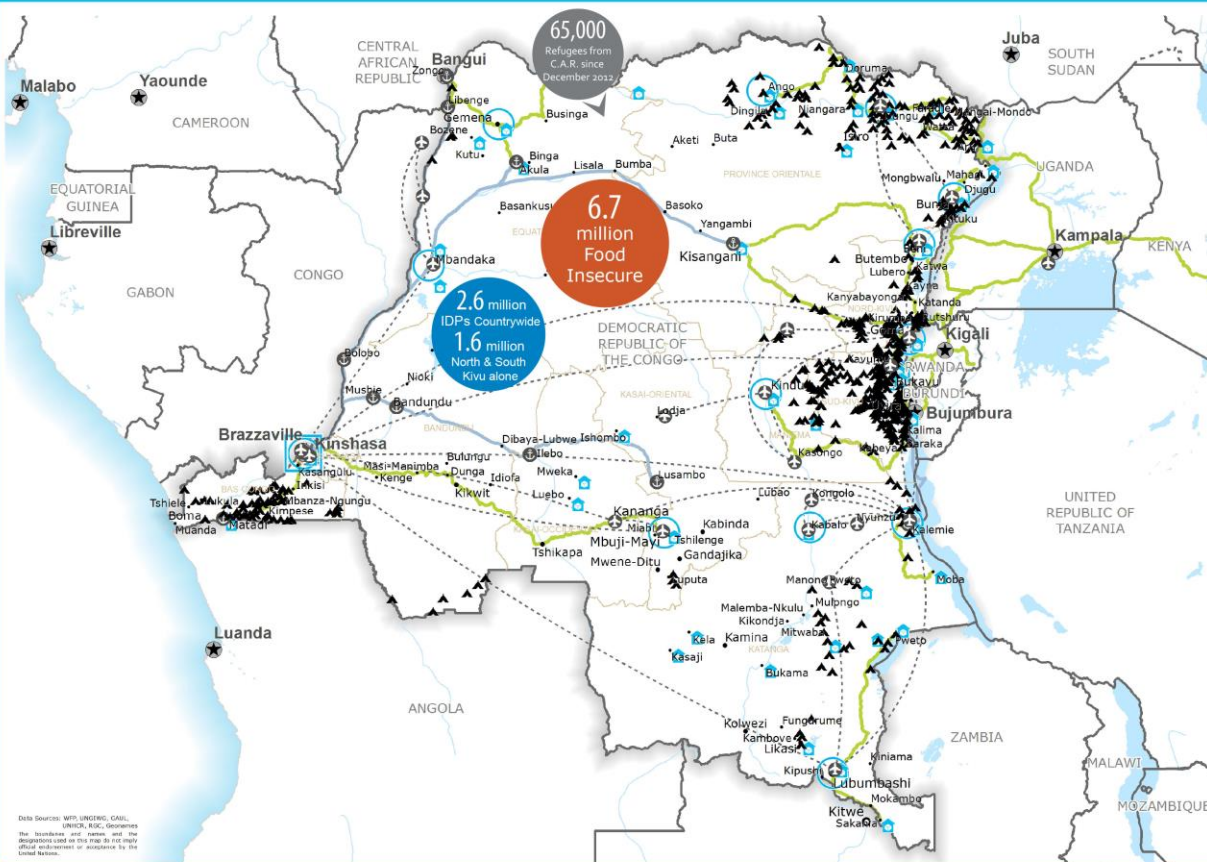


50,411 Reached
23,059 Not Reached
73,470 Planned



37,957 Reached
10,193 Not Reached
48,150 Planned

BENEFICIARIES
(Feb. 2014)



UNHAS (March 2014)

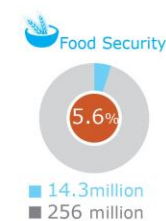
PASSENGERS TRANSPORTED
2,761

LIGHT CARGO TRANSPORTED
11.48MT

26 PEOPLE EVACUATED

HUMANITARIAN ENTITIES SERVED
157

CLUSTERS Requirements & Funding (USD)



14.3million Reached
256 million Requirement



0 million Reached
60.7million Requirement

Source: FTS, 17 April 2014



- Country Office
- Field Office
- Warehouse
- National Capital
- International boundary line
- Sub Office
- Food Distributions Points
- Refugee / IDP Camp
- Major Town
- Port
- Intermediate Town
- Small Town
- UNHAS Connection
- UNHAS Route

WFP
Clusters

WFP LEVEL 2 EMERGENCY
SINCE 12 DECEMBER 2013
Contact: hq.situation.room@wfp.org
Website: www.wfp.org

Mali

Situation Analysis

Security / Political Situation

While the south remains relatively stable, northern Mali is experiencing a pronounced resurgence in anti-government activities, motivated by a combination of the announcement of troop draw-downs by French forces and stalled peace negotiations between the Government of Mali and Tuareg armed groups. Tensions are further exacerbated by inter-communal clashes. Humanitarian actors risk to be involved in collateral incidents, although they are not a target. While displacement numbers have remained stable, with 186,800 IDPs and 146,670 Malian refugees in neighbouring countries, this trend could easily be reversed by increased insecurity in the North.

Food Security

The loss of productive assets such as cattle and agricultural infrastructure has caused an income shock for most households who face a greater risk of falling into food. Reinvest in productive assets is frozen. The price level of food staples in different markets in the Gao and Timbuktu regions has witnessed upward volatility adding pressure to the purchasing power of local households. The population of the north is at serious risks of experiencing worsening conditions in their food security status via lower income, broken credit lines, staple price volatility and damaged infrastructure.

Programming Situation

EMOP 200525 (Jan 13 - Dec 14): The EMOP aims to assist 1,304,000 food-insecure people, including 900,000 conflict-affected people in Northern Mali through general distributions (food and cash), nutrition interventions and emergency school feeding. The project was scaled up significantly through Budget Revision 4 in December 2013, increasing the budget from US\$136 million to US\$351 million as well as 63 percent increase in targeted beneficiaries.

REG EMOP 200438 (Jun 12 – Dec 14): Covering the countries Mauritania, Burkina Faso and Niger, the regional EMOP aims to assist Malian refugees displaced by the conflict in Northern Mali. Over the duration of the project, WFP hopes to assist 184,000 beneficiaries. Activities include general food distributions, nutrition interventions and blanket feeding.

DEV 105830 (Jan 08 – Dec 14): The CP covers the needs of more than 425,000 targeted beneficiaries in southern Mali. Nutrition activities are ongoing at 1,032 health centres and school feeding occurs at 566 schools throughout the five southern regions. Food-for-Work and Food-for-Assets activities are also taking place in these regions.

SO 200521 & SO 200534 (both Jan 13 – Dec 14): The two SOs aim to provide Humanitarian Air Services and support for the Logistics Cluster and Emergency Telecommunication Cluster respectively.

Access

WFP Mali is facing severe access constraints in northern Mali due to the volatile

security situation, where NGO partners are the main deliverers of WFP's activities (e.g. third-party monitoring). WFP has limited presence in Timbuktu and Gao, while no staff members are stationed permanently in Kidal.

Resourcing

EMOP 200525: 6-month (net) shortfalls for the period April – September 2014 are estimated at US\$112.4 million (77 percent of total requirements). The EMOP faces shortfalls in Plumpy'Sup in April 2014. WFP has responded to shortfalls by reducing rations for beneficiaries in January and February. WFP experienced breaks in the First Quarter and faces shortfalls in nutritional items in the Second Quarter.

REG EMOP 200438: 6-month (net) shortfalls for the period April – September 2014 stand at US\$6.2 million (62 percent of requirements).

DEV 105830: The Country Programme running through December 2014 is facing 6-month (net) shortfalls amounting to US\$21.9 million or 38 percent of requirements for the period April – September 2014.

Capacity

Despite the challenges and restrictions in the North, WFP has been able to provide assistance to food-insecure populations. In February, WFP reached 422,533 out of 617,707 targeted beneficiaries under EMOP 200525. The Regional EMOP 200438 reached 128,353 out of 143,477 targeted beneficiaries in February. However, existing access constraints remain of high concern in areas where people mainly rely on humanitarian aid, such as in Timbuktu, Gao and Kidal provinces. Stocks are being positioned in Gao and Timbuktu as part of a contingency plan, but the scope for this approach is limited due to resourcing constraints.

Inter-Agency

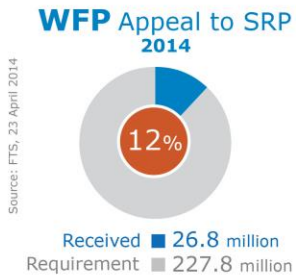
The Government and humanitarian actors have set up a cooperation framework to improve complementarity in their assistance and to mobilize necessary additional resources to help people who need food aid. As of 16 April, the 2014-2016 Strategic Response Plan (SRP) is funded at 11.4 percent (US\$65 million of the US\$568 million) of which WFP requirements are funded at 11.8 percent (US\$26.8 million out of US\$227 million). The Food Security Cluster is re-orienting its activities towards capacity-building and transitioning to a more government-led coordination process. The harmonisation of assistance's interventions continues to be implemented in partnership with ICRC. The Logistic Cluster has phased out. UNHAS is exploring new airstrips in the North, in order to continue its fundamental support to the entire humanitarian community.

Risks

- Armed conflict in the north of Mali involving government troops, Tuareg armed groups and Islamist factions
- Inter-communal violence in the north of Mali involving Tuareg and Peuhl communities
- Food price volatility
- Income and assets loss
- Credit constrains

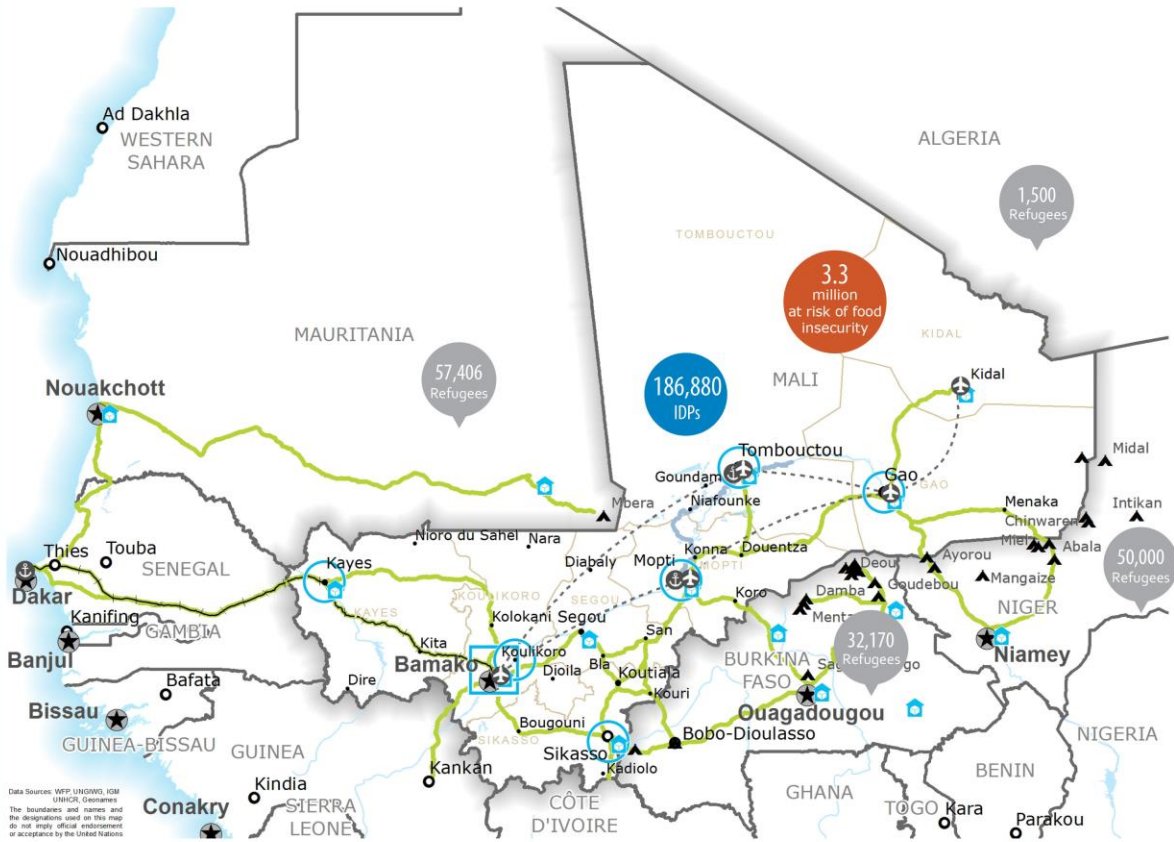
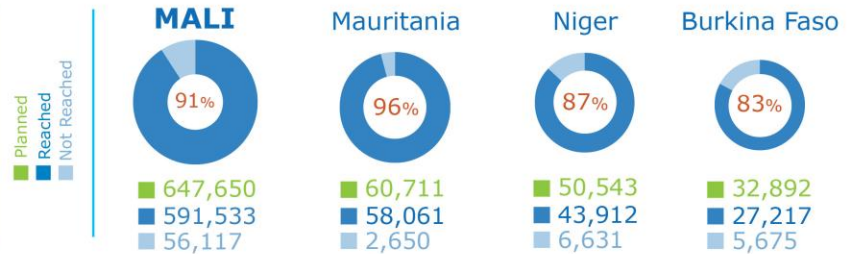
Mali Dashboard

Date created: 23 April 2014

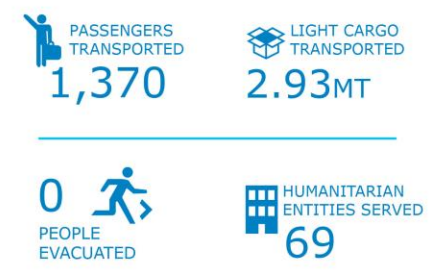


BENEFICIARIES (March 2014)

TOTAL
91%
720,723 Reached
791,796 Targeted

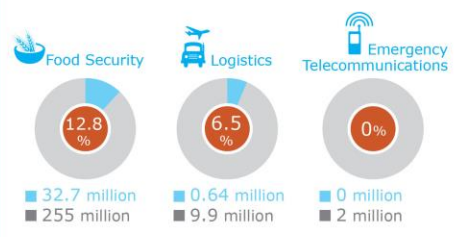


UNHAS (March 2014)



CLUSTERS Requirements & Funding (USD)

Source: Financial Tracking Service, 23 April 2014



- Country Office
- Field Office
- Refugee / IDP Camp
- National Capital
- International boundary line
- Sub Office
- Warehouse
- Road Supply Route
- Major Town
- Intermediate Town
- Small Town
- Port
- UNHAS Connection
- UNHAS Route

WFP
Clusters

WFP LEVEL 2 EMERGENCY
SINCE 12 January 2012
 Contact: hq.situation.room@wfp.org
 Website: www.wfp.org

West Africa Ebola Outbreak

Situation Analysis

The current Ebola Virus Disease (EVD) outbreak is among the most challenging since Ebola was first recorded in 1976. Experts in Guinea had initially been unable to identify the disease, whose symptoms were first observed at the end of February 2014. On 21 March, the Ebola filovirus was identified by the Institut Pasteur and the epidemic declared on 22 March by the Guinean Health Ministry. The deadly hemorrhagic fever started from the forest area of south-east Guinea and quickly spread from southern communities in the country. There is no vaccine or specific treatment. As of 14 April, Ebola-related deaths have been confirmed in Guinea (168 suspected cases and 106 deaths; of these suspected cases, 42 have tested positive), Liberia (26 clinical cases of EVD: 6 laboratory confirmed, and 20 probable and suspected cases of EVD, including 13 deaths) and Sierra Leone, with six suspected but unconfirmed cases in Mali.

The World Health Organization said it will take up to four more months to contain the Ebola outbreak. Around 600 people are currently under surveillance after being in contact with EVD patients.

Programming Situation

IRA-EMOP 200698: The project was approved on 07 April, following the Guinean Government's request of assistance, aiming to provide assistance to hospitalized victims, medical workers, their families and communities at risk of contamination in Guinea. GFD is expected to target 32,000 hospitalized victims, households and affected communities through a 3-month programme for a total tonnage of 1,316mt. Procurement is well underway.

Access

All WFP field visits to affected provinces have been suspended.

Resourcing

IRA-EMOP has a final budget of US\$1,490,123. A CERF revised budget has been submitted amounting to US\$950,000 for emergency assistance. The PRRO, targeting vulnerable groups affected by shocks in the Forest Guinea region where the EVD spread, faces significant low funding: as of 22 April is only 14,5 percent funded.

Capacity

WFP is being providing food to the isolation centres in the Forested Guinea region and established a partnership with the Guinean Red Cross for the provision of food to the patients and families at Donka Hospital in Conakry. The Guinea Country Office is also involved in the humanitarian logistics coordination of the response to the Ebola crisis.

Inter-Agency

WFP is also involved in the humanitarian logistics coordination of the response to the Ebola crisis. UNHRD has supported WHO's response to the Ebola virus outbreak by

delivering 5.3 mt of protective equipment from the UNHRD depot in Dubai to Guinea, Sierra Leone and Liberia from 21 March to 07 April.

Risks

The Country Office is implementing a mitigation and safety strategy to protect its staff and dependants. A package of Personal Protection Equipment has arrived from HQ. All WFP staff/dependants in the County Office and Sub offices received hand gel bottles

West Africa Ebola Outbreak

People Affected by Ebola Virus Disease (EVD) - April 2014



Date Created: 22 April 2014
 Contact: omep.gis@wfp.org
 Website: www.wfp.org
 Map Service by OMEP GIS

Areas Affected by Ebola Virus Disease

- Number of Cases
- Number of Deaths

- Country Office
- Sub Office

- National Capital
- Major Town
- Intermediate Town
- Small Town

- Main Roads
- Railway
- International Boundary
- First Level Boundary

Data Sources: WHO, WFP, Geonames, ECHO, MoHSW, MoH
 The boundaries and names and the designations used on this map do not imply official endorsement or acceptance by the United Nations.