



Country Strategic Plan (2026-2030)

Liberia Country Office

Executive Board Informal Consultation

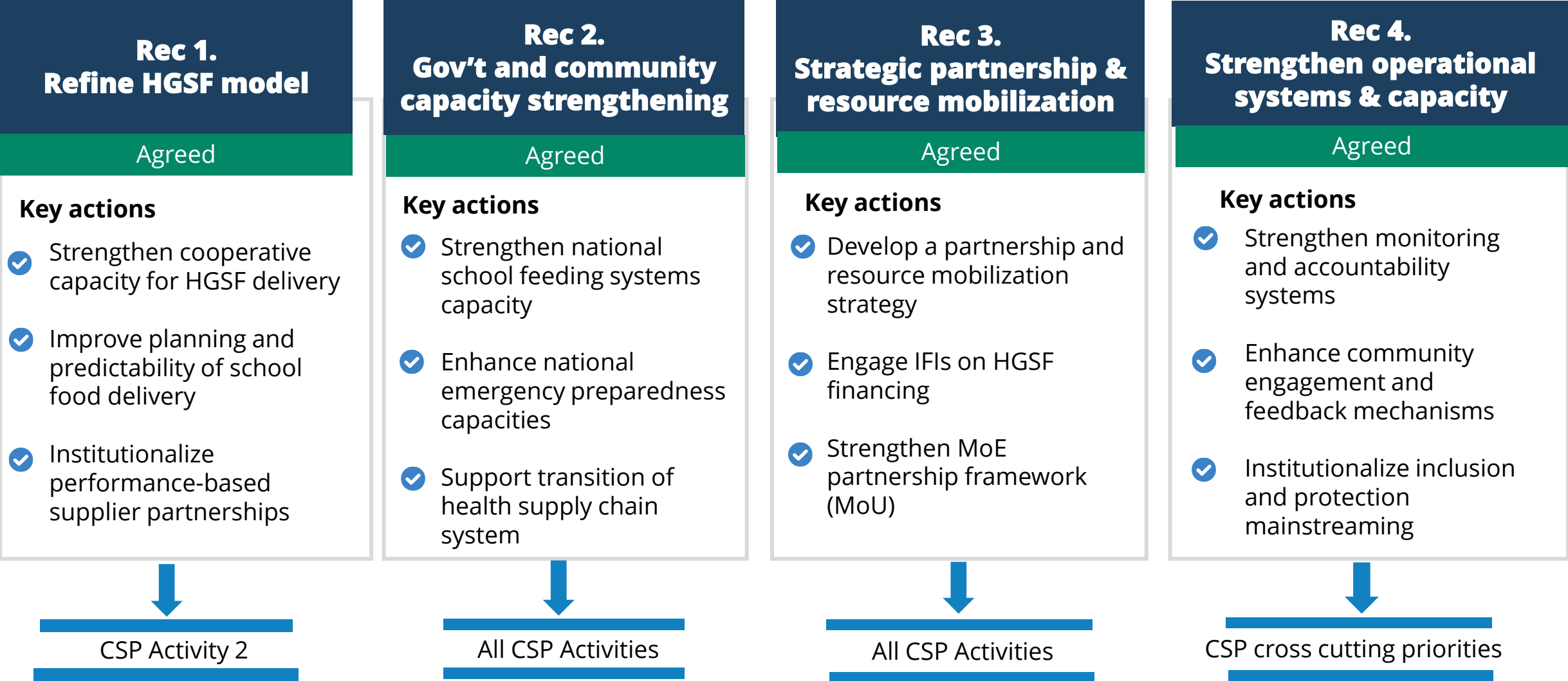


May 2026



Evaluation & Learning: Use of CSPE evidence in CSP design

Management Response to the CSP evaluation of Liberia Country Office





Context and strategic shifts: improving food security trends, continued vulnerability to shocks, and stronger national ownership

Context

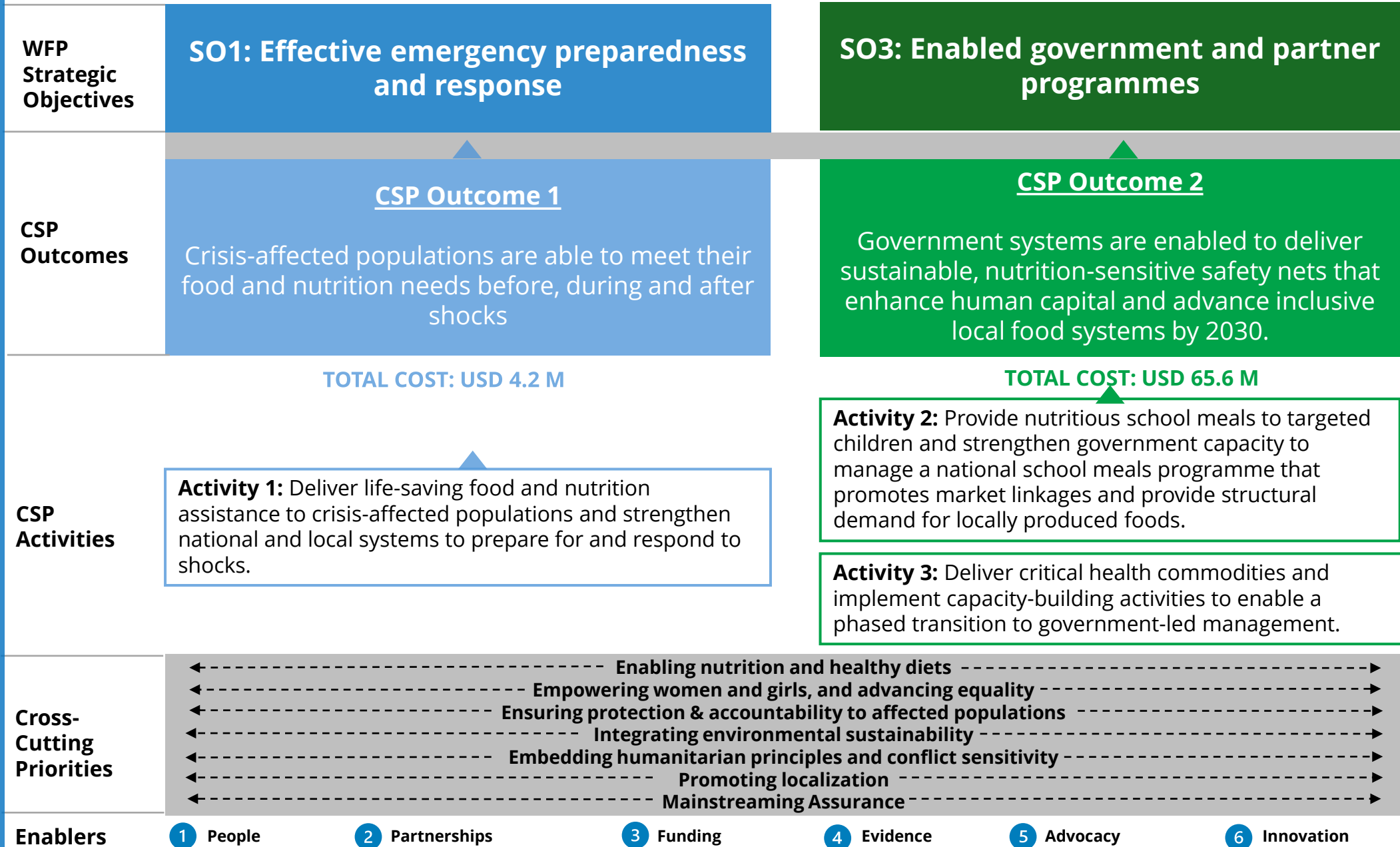
- Improving food security and nutrition outcomes during the current CSP
- Growing Government ownership and investment in national systems
- Persistent vulnerability to shocks, price volatility and localized emergencies

Shifts

- WFP moving from implementer to enabler and strategic advisor
- School feeding as an anchor for human capital and local food systems
- Increased focus on institutionalization and handover
- Greater emphasis on emergency preparedness and shock response capacity



Line of Sight





World Food Programme

SAVING
LIVES
CHANGING
LIVES

