

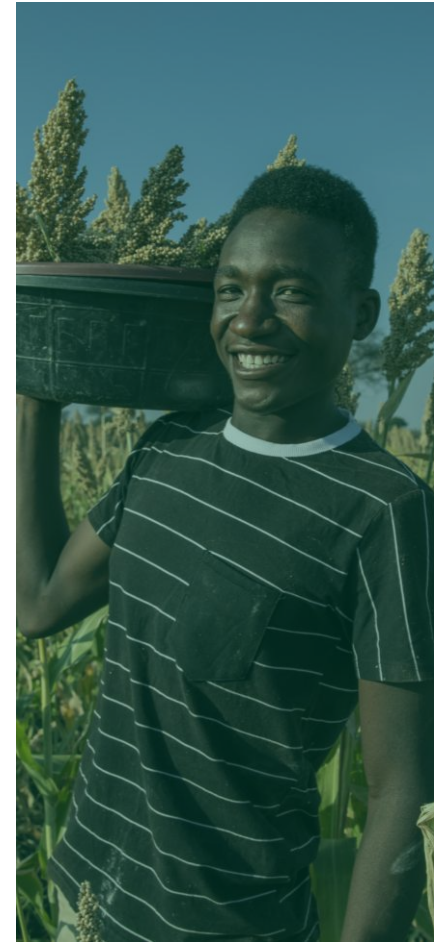


World Food Programme

SAVING LIVES
CHANGING LIVES

WFP

Southern Africa



WFP in Southern Africa



The boundaries and names shown and the designations used on this map do not imply official endorsement or acceptance by the United Nations.





26 MILLION

people are facing acute food insecurity in **Angola, Lesotho, Malawi, Mozambique, Namibia, Zambia, and Zimbabwe.**

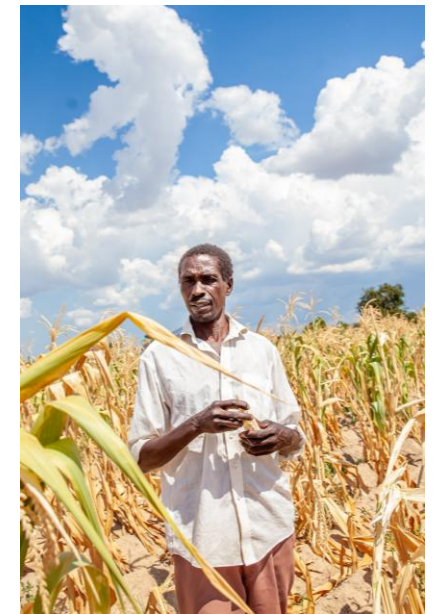


OCTOBER

marks the onset of the lean season. But, this year, several communities sounded distress calls as early as **May.**



©Chiwoyu Sinyangwe/The Guardian



State of emergency/disaster

● Zambia

Declared a state of emergency in **February**



● Zimbabwe

Declared its state of emergency in **April**



● Lesotho

Declared a state of emergency in **April**.

● Malawi

Declared a state of disaster in **March**.



● Namibia

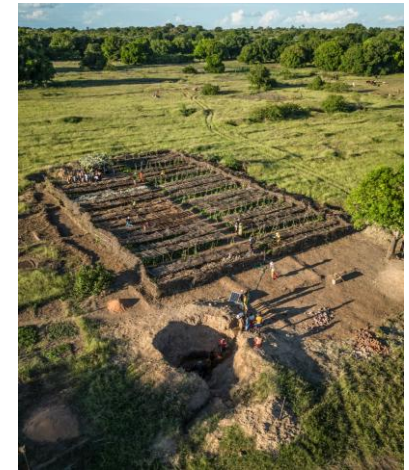
Issued a drought-related state of emergency in **May**

Anticipatory Action



This approach not only saved lives and preserved livelihoods, but it was also cost effective.

WFP triggered anticipatory action, unlocking payouts worth **14 million dollars**, for **half a million people** across **4 countries**.



But we could only reach a fraction of those in need!

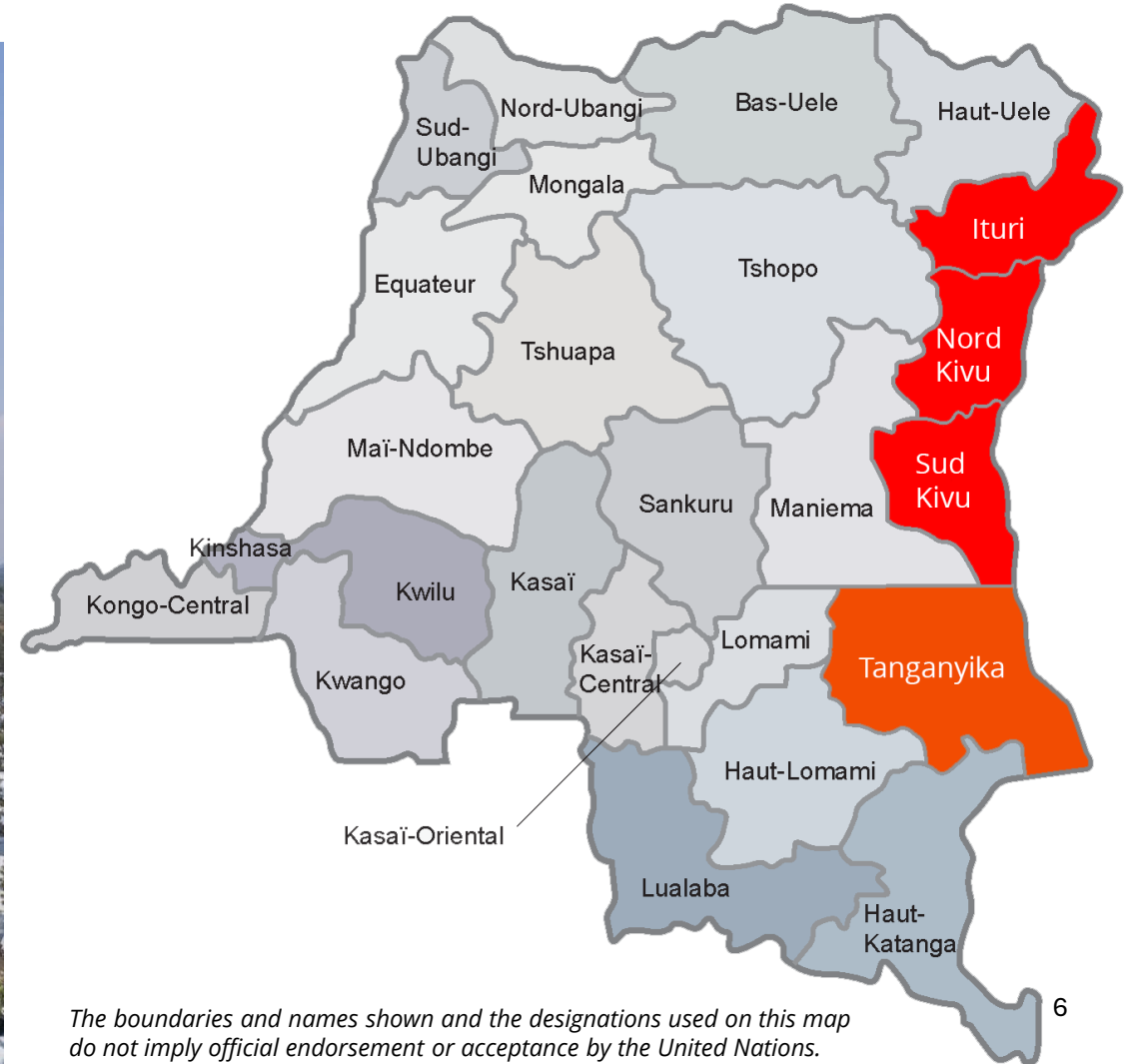


Anticipatory Action



The crisis in **DRC** is much wider now!

Total **IDPs** in the East = 6.9 million
IDPs in 2024 alone = 2.9 million



The boundaries and names shown and the designations used on this map do not imply official endorsement or acceptance by the United Nations.

Northern Mozambique - Impact of a 7-year armed insurgency

Mass Displacement
> 600,000 people



Crisis levels of food insecurity
> 800 000 people



The boundaries and names shown and the designations used on this map do not imply official endorsement or acceptance by the United Nations.

The plight of IDPs DRC and Mozambique





Global Assurance



Monitoring and accountability mechanisms for beneficiaries



Management of cooperating partners



Supply chain



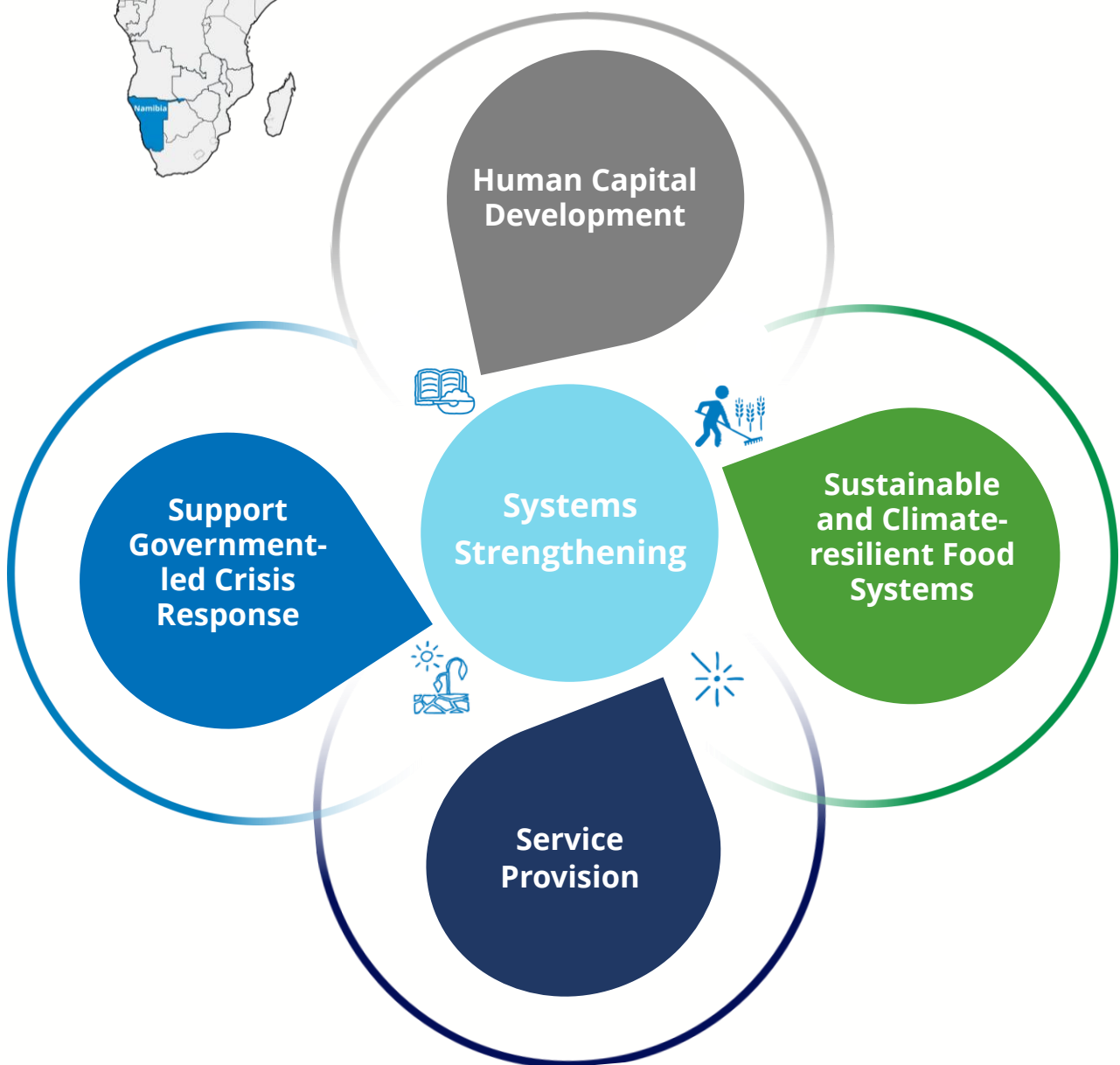
Targeting and managing the identity of beneficiaries



To ensure that WFP aid always reaches the right people, everywhere



Namibia Country Strategic Plan (2025-2029)



Enablers

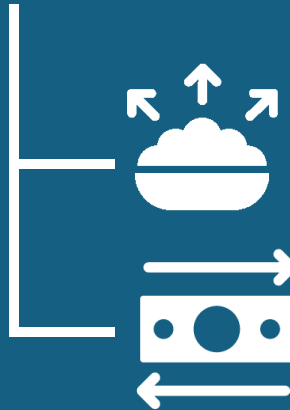
- Digital Innovation
- Strategic Partnerships
- Robust Evidence
- SSTC

...towards a food-secure and more resilient Namibia

2024 Achievements



**11.3 million
people reached**

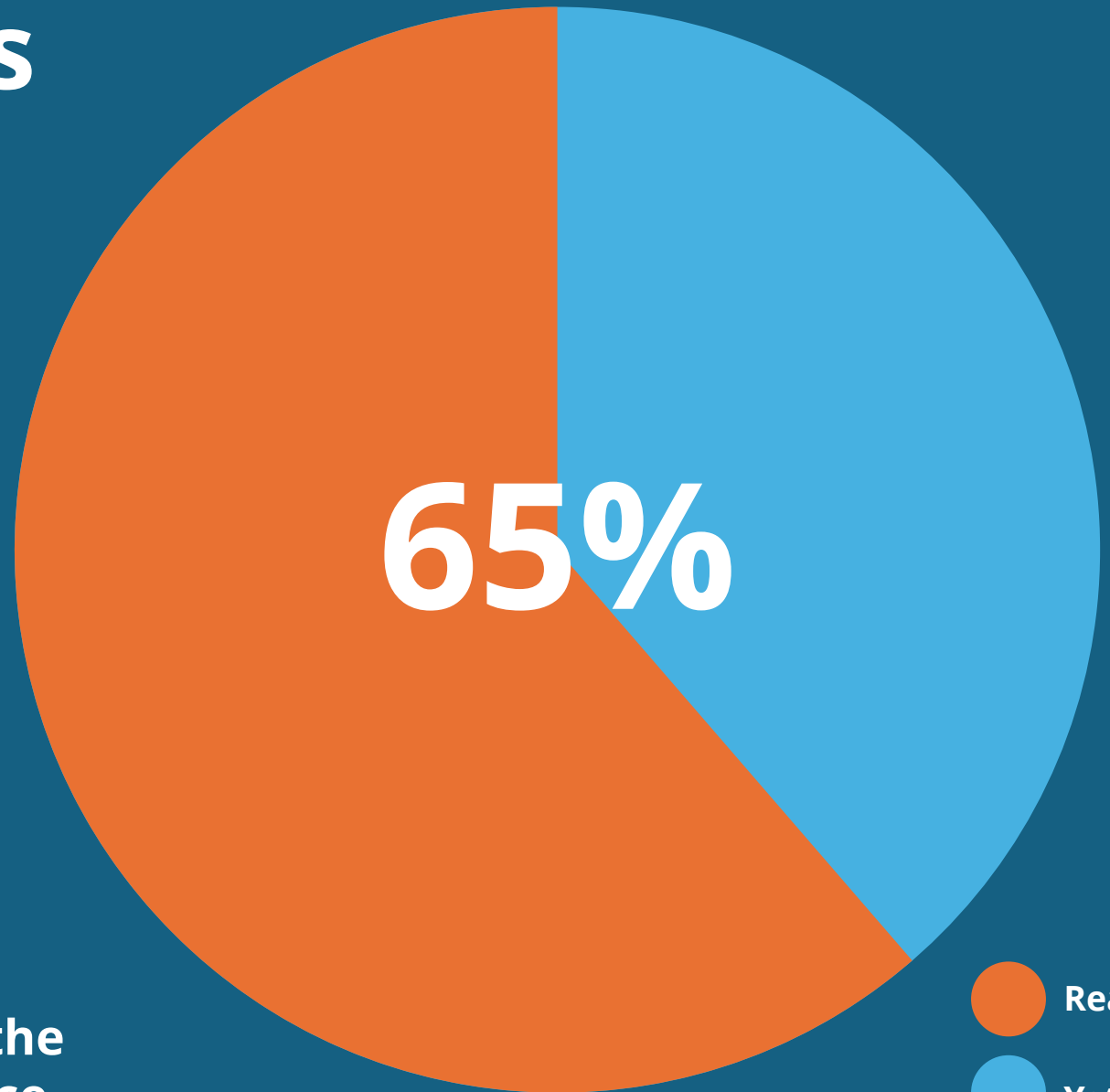


**195,000 metric
tonnes of food**



**115 million dollars of
cash-based transfers**

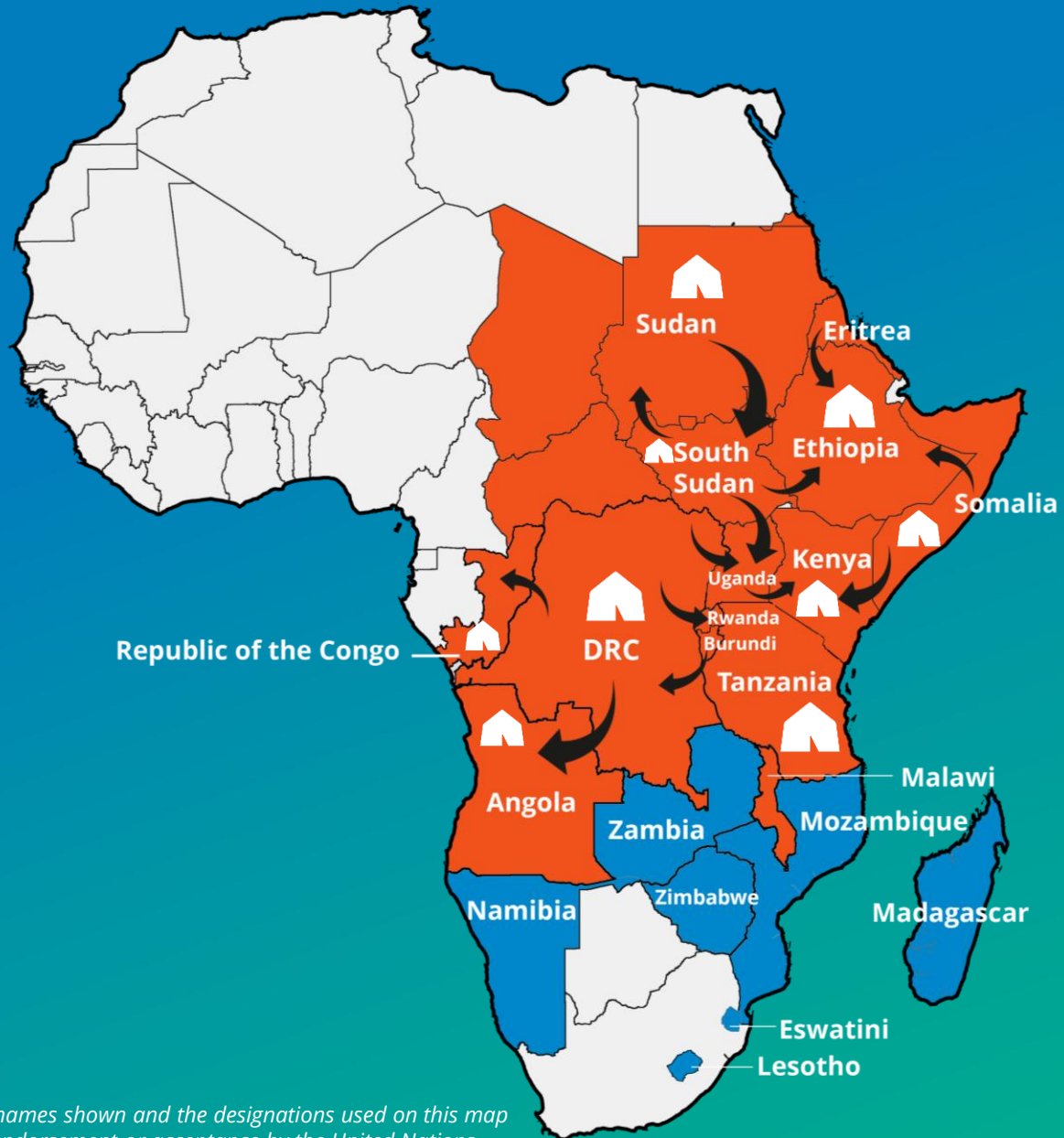
**Women and girls account for half of the
people reached through our assistance.**



 Reached

 Yet to reach

Refugees in the Region



The boundaries and names shown and the designations used on this map do not imply official endorsement or acceptance by the United Nations.

Vegetation and Mineral Distribution in Southern Africa



The boundaries and names shown and the designations used on this map do not imply official endorsement or acceptance by the United Nations.



**THANK
YOU**