



World Food Programme

SAVING  
LIVES  
CHANGING  
LIVES

## **EB Briefing Revised Corporate Result Framework (CRF) 2022-25**

**Analysis, Planning and Performance (APP) Division  
Monitoring Frameworks, Methods & Standards Unit (APP-MM)**

**16 July 2024**



## Agenda

- 01** Scope of CRF Revision
- 02** Piloting approach & Indicators
- 03** Open Discussion and Feedback
- 04** Next Steps

# CRF Structure 2022-2025

## IMPACT

SDGs: long term impact of WFP's work



## Strategic Outcomes

Measures aggregable system, institutional changes at scale and/or behavior, practices and beliefs

**1. People are better able to meet their urgent food and nutrition needs**

**2. People have better nutrition, health & education outcomes**

**3. People have improved & sustainable livelihoods**

**4. National programmes & systems are strengthened**

**5. Humanitarian & development actors are more efficient & effective**

## Outputs

WFP's direct contribution based on its comparative advantage

1.1 Food insecure and crisis-affected populations have access to nutritious food and cash-based assistance, restored assets and services to meet their urgent needs

1.2 Crisis-affected children, pregnant women and girls and new mothers, and other nutritionally vulnerable populations benefit from programmes to prevent and treat malnutrition and improve diets

2.1 Food-insecure populations have increased and sustained access to nutritious food, cash-based assistance, new or improved skills and services to meet their food and nutrition needs

2.2 Children, pregnant women and girls and new mothers, and other nutritionally vulnerable populations benefit from programmes to prevent and treat malnutrition and improve diets

2.3 School-aged children and adolescents access school-based health and nutrition packages

## HIGH LEVEL TARGETS

3.1 People and communities have access to productive assets to better cope with shocks and stressors

3.2 People and communities have increased skills, capacities and access to financial, energy and climate services for climate-adapted and sustainable livelihoods

3.3 Smallholder farmers and value chain actors have increased capacity to produce and aggregate marketable surplus, reduce postharvest losses, access markets and leverage linkages to schools

4.1 National actors have increased capacity and knowledge to enhance policies, strategies, processes and programmes contributing to achieve Zero Hunger and other SDGs

4.2 Components of national emergency preparedness and response, social protection, and food systems are strengthened

5.1 Governments and humanitarian actors utilize mandated services in crisis-settings to set-up, manage and deliver response and services

5.2 Partners utilize on-demand services to augment their capacity and ensure more efficient, effective and coordinated interventions

## Cross-cutting priorities

Maximises programme effectiveness



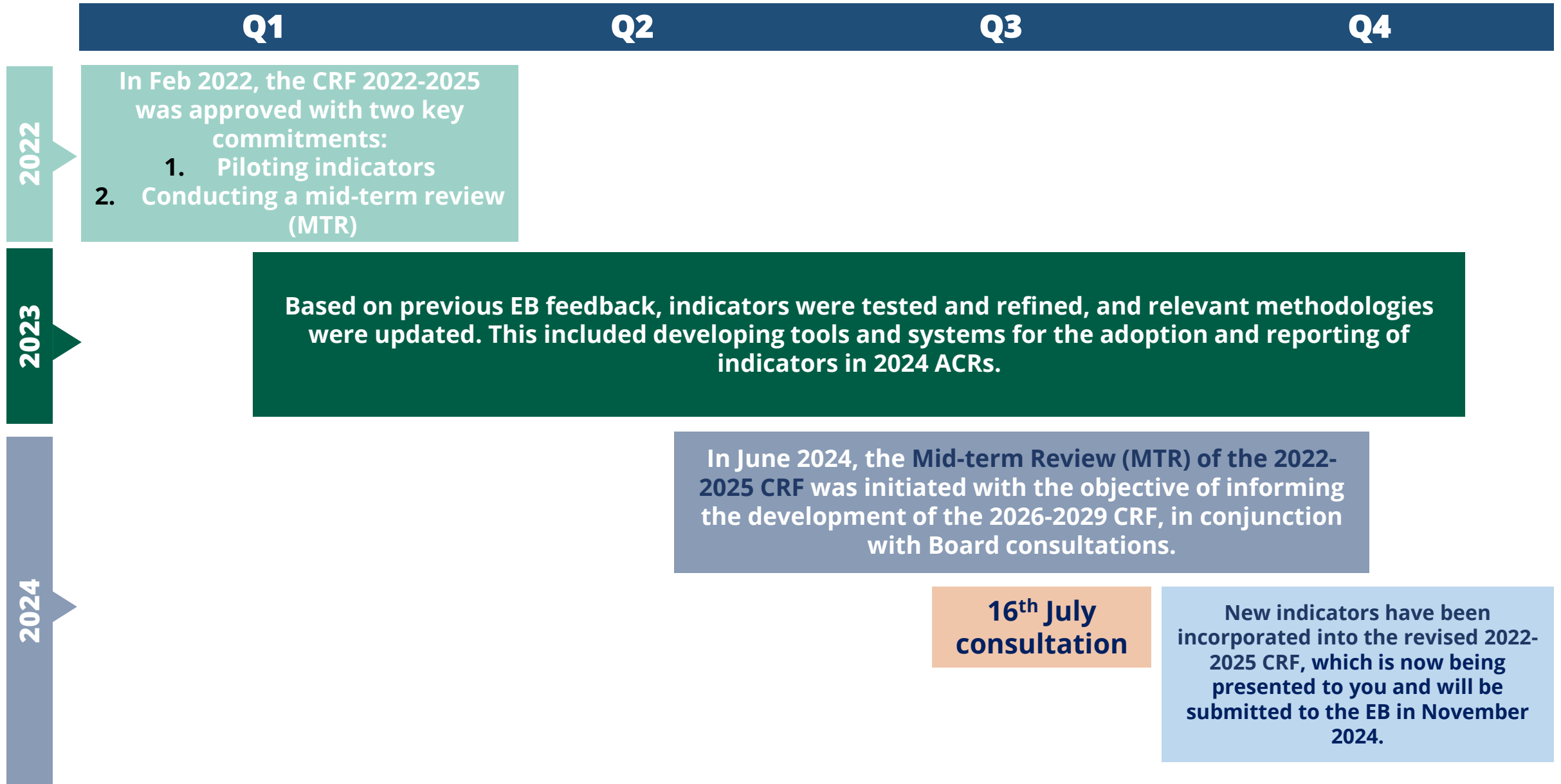
## CSP Activities

## Management Results

Capture 'how' WFP leverages its enablers to ensure effective implementation



# SCOPE OF (2022-2025) CRF REVISION



# INDICATORS' PILOTING

## 1. Indicators' testing & endorsement

Indicators tested and quality assured, methodologies revised.

Inclusion criteria:

- Piloted in at least 3 COs across 2 RBs
- Methodology feasible
- Sound analysis
- Inclusion in at least 2 CO Monitoring (MRE) Plans
- Use of data for action

40 out of 66 indicators selected for inclusion in CRF.

Endorsement of indicators by WFP Directors.

## 2. Establishment of business rules, tools & systems

Revised logframe guidance and business rules, update of corporate tools & systems (Survey Designer, COMET)

## INTEGRATION & ADOPTION OF INDICATORS BY COUNTRY OFFICES

## 3. Updated Indicator Compendium

WFP Indicator Compendium, updated to collect and/or report on indicators

## 4. Socialization of indicators

Socialization & training on pilot indicators (e.g. webinars) for RB and CO staff.

## 5. Inclusion in CSP logframes and data collection plans

Promotion of indicators' uptake in relevant and applicable contexts. Inclusion of indicators in CSP logframes for 2024 reporting (ACRs).





## What is Survey Designer?

**Survey Designer** is WFP's web-based tool allowing users in the field to build tailored **monitoring and assessment surveys** based on standardized content (in multiple languages)

# AUTOMATED DATA COLLECTION TOOLS IN SURVEY DESIGNER (SD) ALIGNED WITH STANDARD CRF METHODOLOGIES



**29 Survey-based CRF (2022-25) indicators** were included in Survey Designer:

- CRF Outcome (20)
- Cross-cutting (9)



**Revised and updated methodologies** and links to additional resources on the Resource Centre



**Professional translations** into French, Spanish and Arabic

# STANDARDIZED METHODOLOGICAL NOTES IN INDICATOR COMPENDIUM

Section	Description
<b>Indicator type &amp; Area</b>	Description of the indicator type: XX corporate indicator (CRF); XX corporate indicator (Not in CRF); XX Country specific indicator; High-Level Target (HLT) (not applicable for Management Key Performance Indicators (MKPIs)) *"Positioned for the CRF" references indicators that were piloted in 2023 and will be presented to the Executive Board in 2024
<b>Included in CSP Logframes</b>	Refers to whether COs can include this indicator in their respective CSO Logframes (not applicable for HLTs and MKPIs)
<b>Applicability</b>	Establishes rules for when to apply this indicator across WFP programmes and if it is mandatory (not applicable for HLTs or MKPIs)
<b>Definition</b>	A clear description of what the indicator aims to measure ('Description' for MKPIs)
<b>Data source</b>	Where to find the data to calculate the indicator at the first point of recording and type (e.g. primary)
<b>Data collection tool</b>	Desk review, Programme tracking, or household surveys if applicable
<b>Data entry in corporate systems</b>	Required corporate system to report values (not applicable for HLTs or MKPIs)
<b>Baseline, Frequency of data Collection &amp; Target Setting</b>	Defines how to set the baseline, how and when to set the annual and/or end-of-CSP targets, and the mandatory/recommended frequency for data collection
<b>Indicators collected at the same time</b>	Outlines the indicators that are collected, analyzed and interpreted together to provide better insight on the situation (not applicable to HLTs or MKPIs)
<b>Decisions data can inform</b>	Provides insight on utilization of results (not applicable for HLTs and MKPIs)
<b>Reporting examples</b>	Examples for how to report on indicators within corporate/external reports (not applicable for MKPIs)
<b>Visualization</b>	Examples of charts that can be used when visualizing indicators (not applicable for HLTs or MKPIs)
<b>Limitations</b>	Provides a summary on an indicator's strengths and weaknesses



WFP Indicator Compendium (2022-2025)

Version 2.3

June 2024

WFP Indicator Compendium 2022-2025 (Version 2.3, June 2024) | World Food Programme

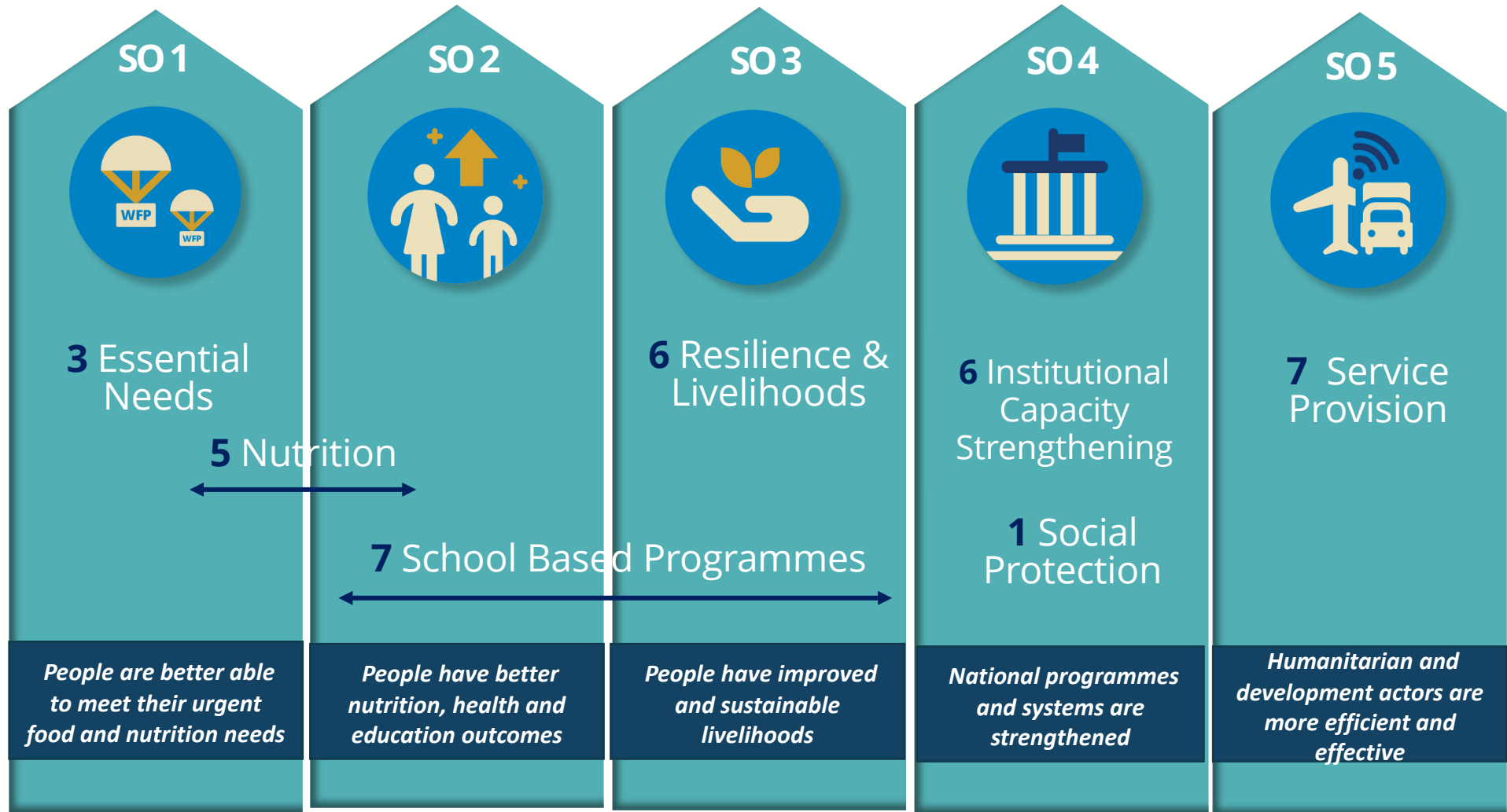
# IN SUMMARY: 40 NEW INDICATORS (2022-25 CRF)

- OUTPUTS**  
14 New Output Indicators  
across Standard Outputs
- OUTCOMES**  
21 New Outcome Indicators  
across all Strategic Outcomes
- CROSS-CUTTING**  
5 New Cross-cutting Indicators on  
Gender Equality & Women's  
Empowerment, Conflict Sensitivity,  
and Nutrition Integration Results



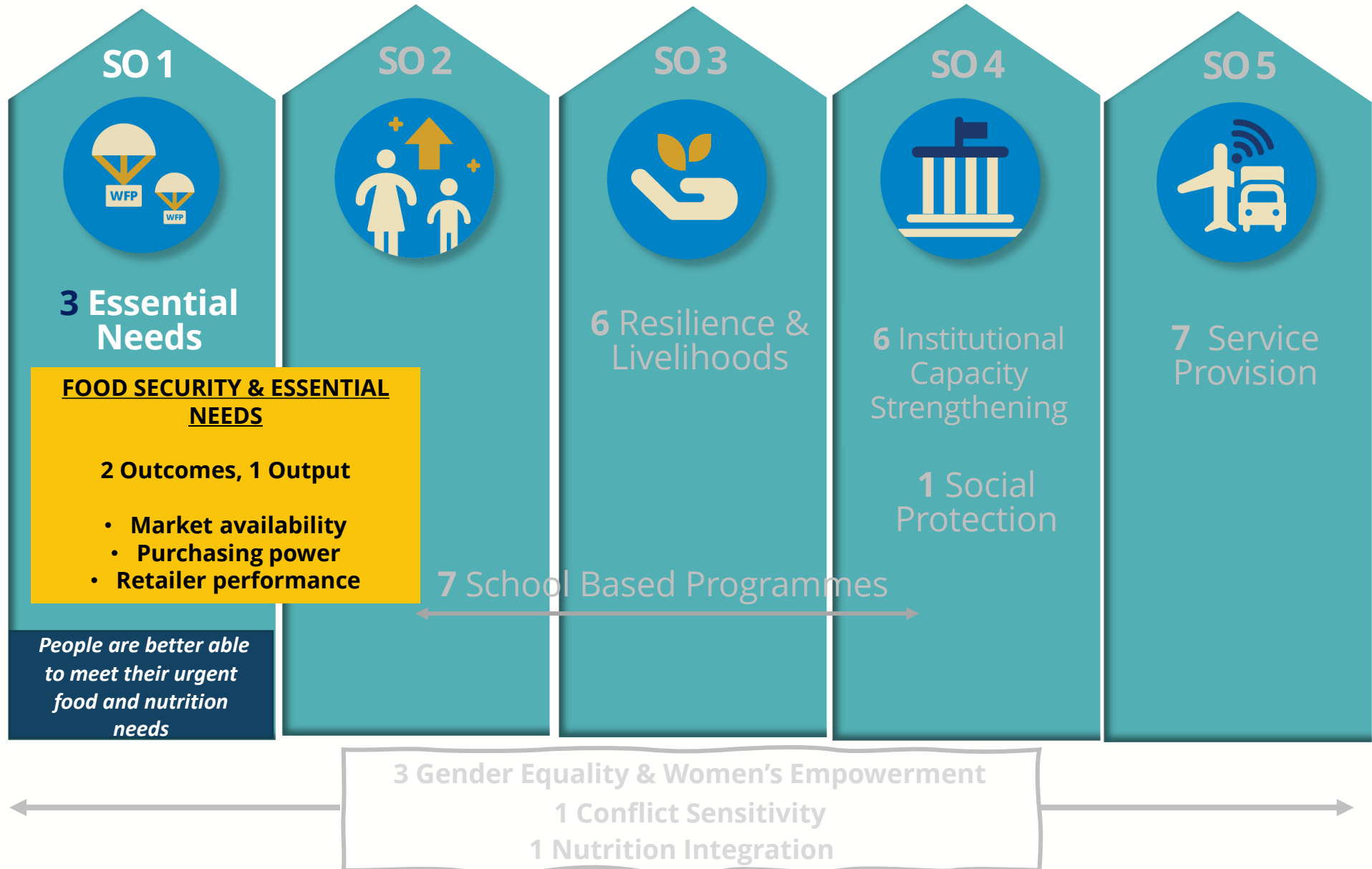


# IN DETAIL: 40 NEW INDICATORS BY SO & THEMATIC AREA

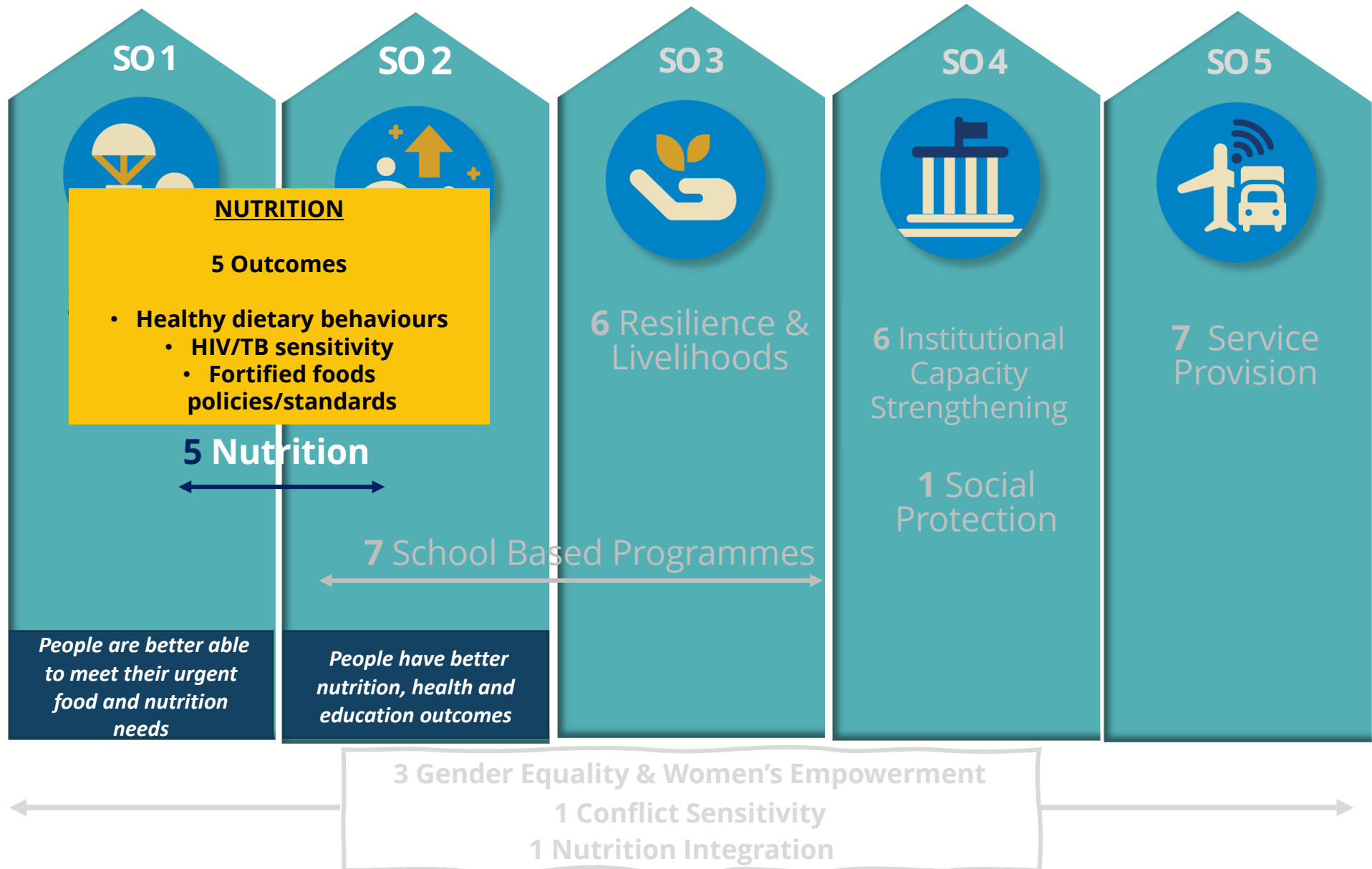


3 Gender Equality & Women's Empowerment  
1 Conflict Sensitivity  
1 Nutrition Integration

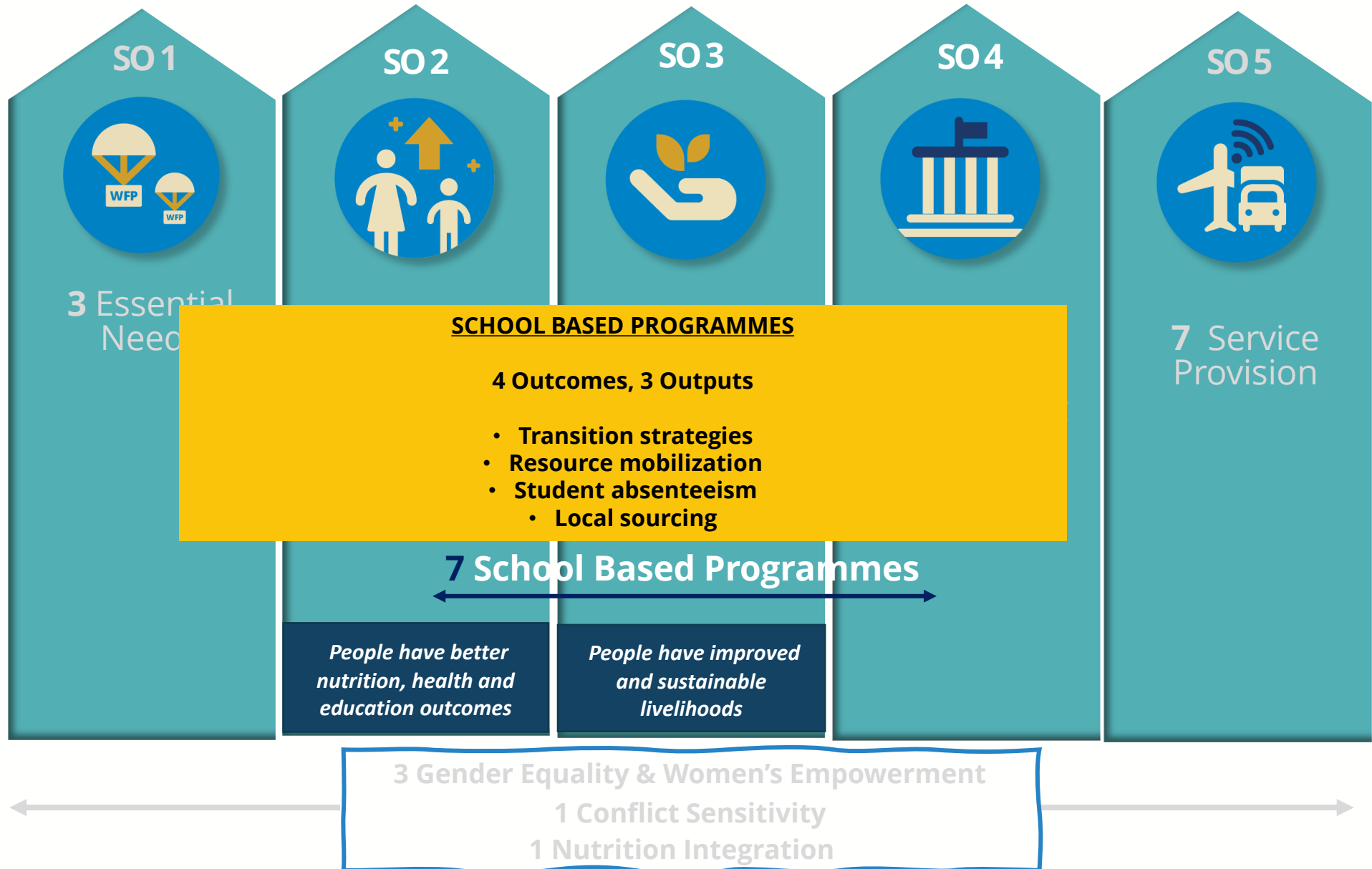
# IN DETAIL: 40 ADDITIONAL INDICATORS BY SO & THEMATIC AREA



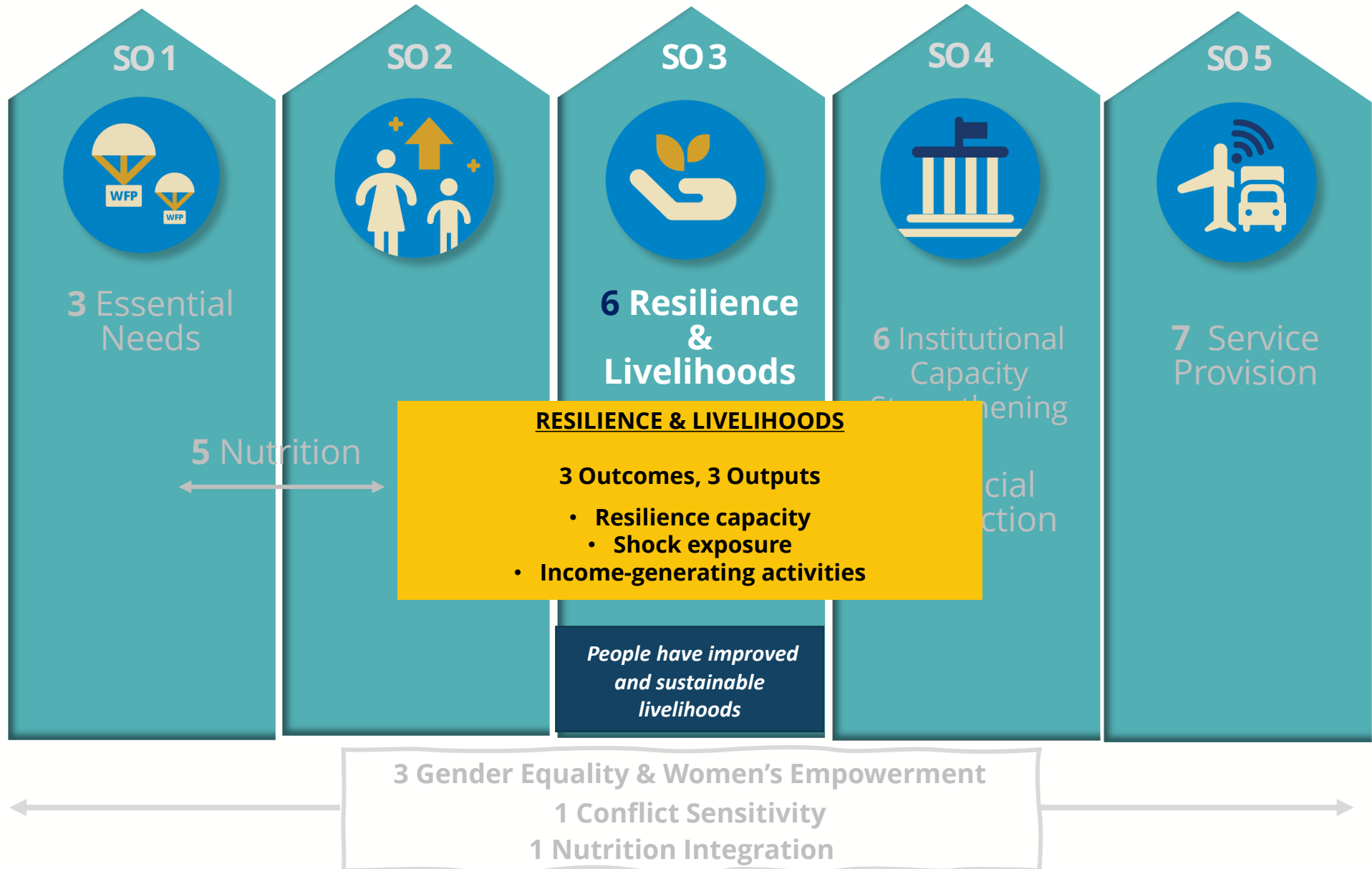
# IN DETAIL: 40 ADDITIONAL INDICATORS BY SO & THEMATIC AREA



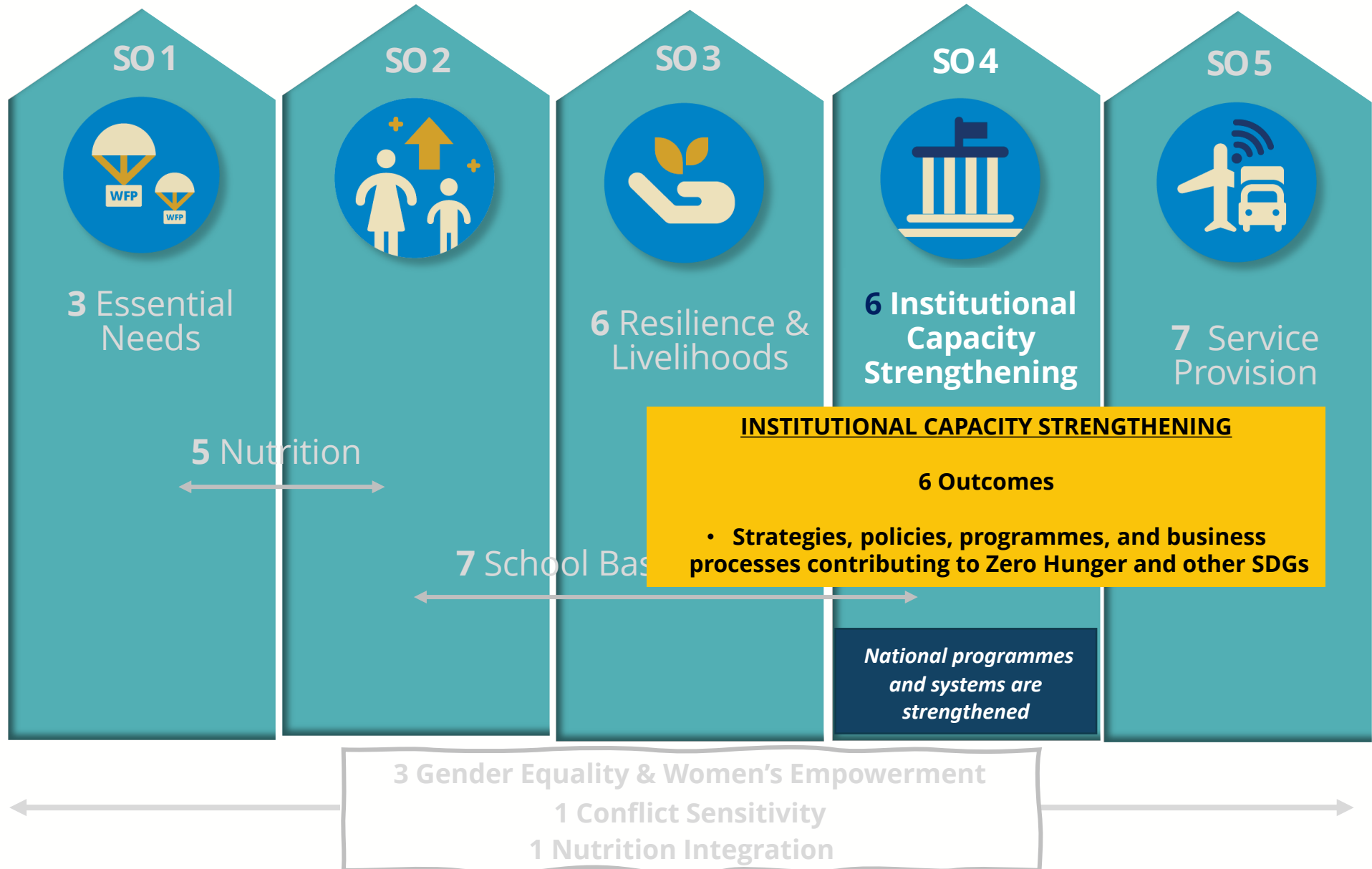
# IN DETAIL: 40 ADDITIONAL INDICATORS BY SO & THEMATIC AREA



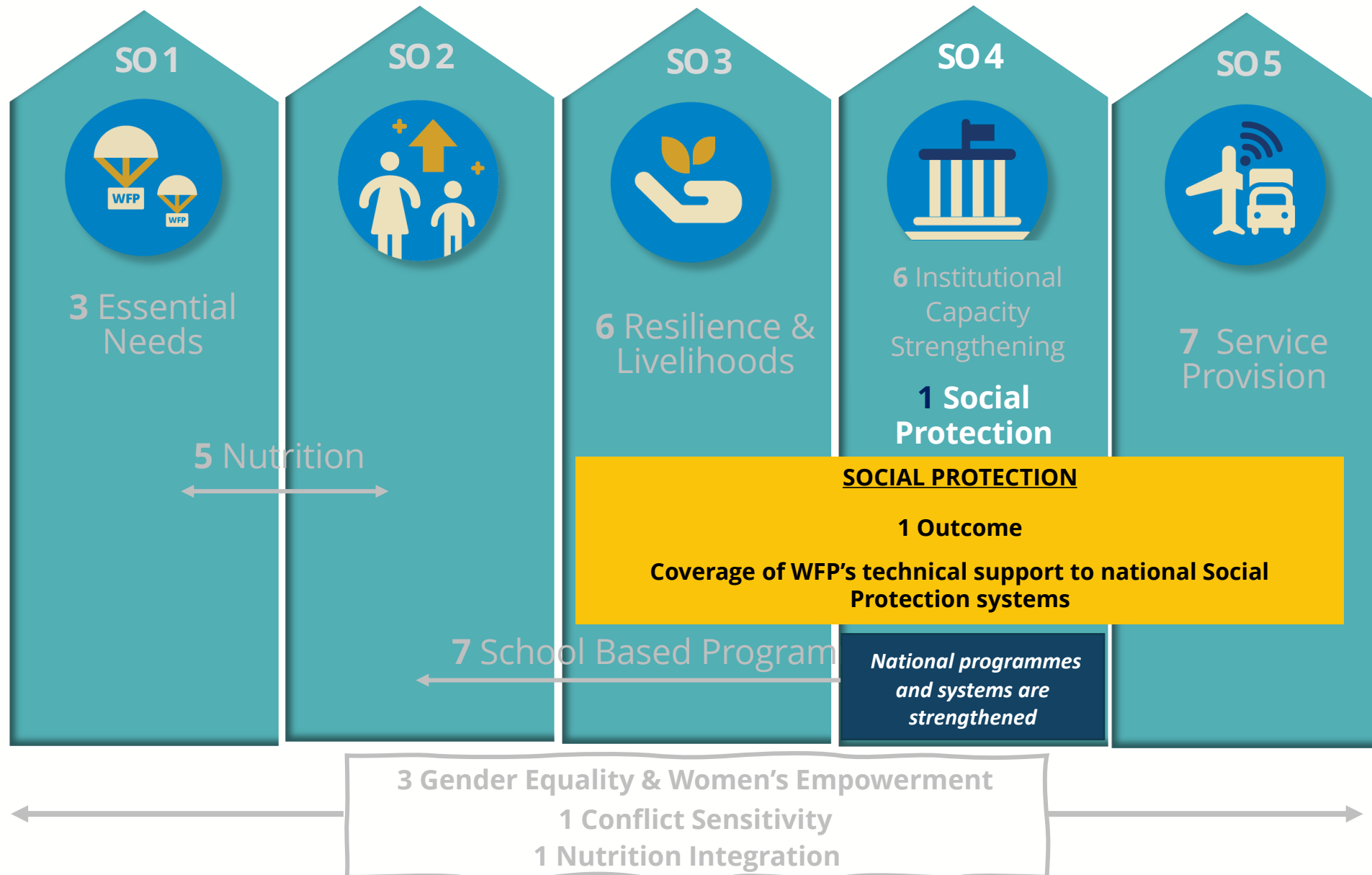
# IN DETAIL: 40 ADDITIONAL INDICATORS BY SO & THEMATIC AREA



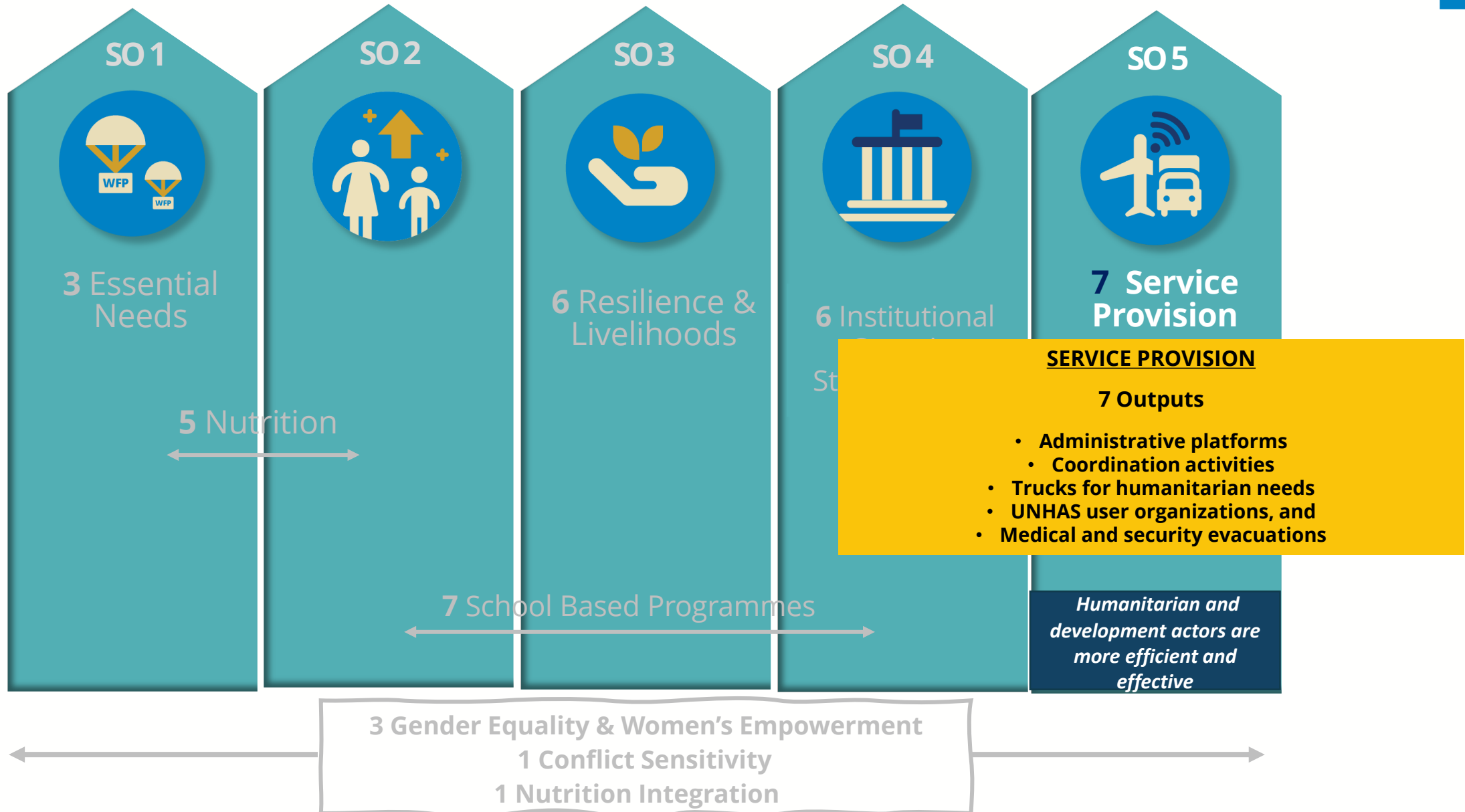
# IN DETAIL: 40 ADDITIONAL INDICATORS BY SO & THEMATIC AREA



# 40 Additional Indicators: By thematic area and SO

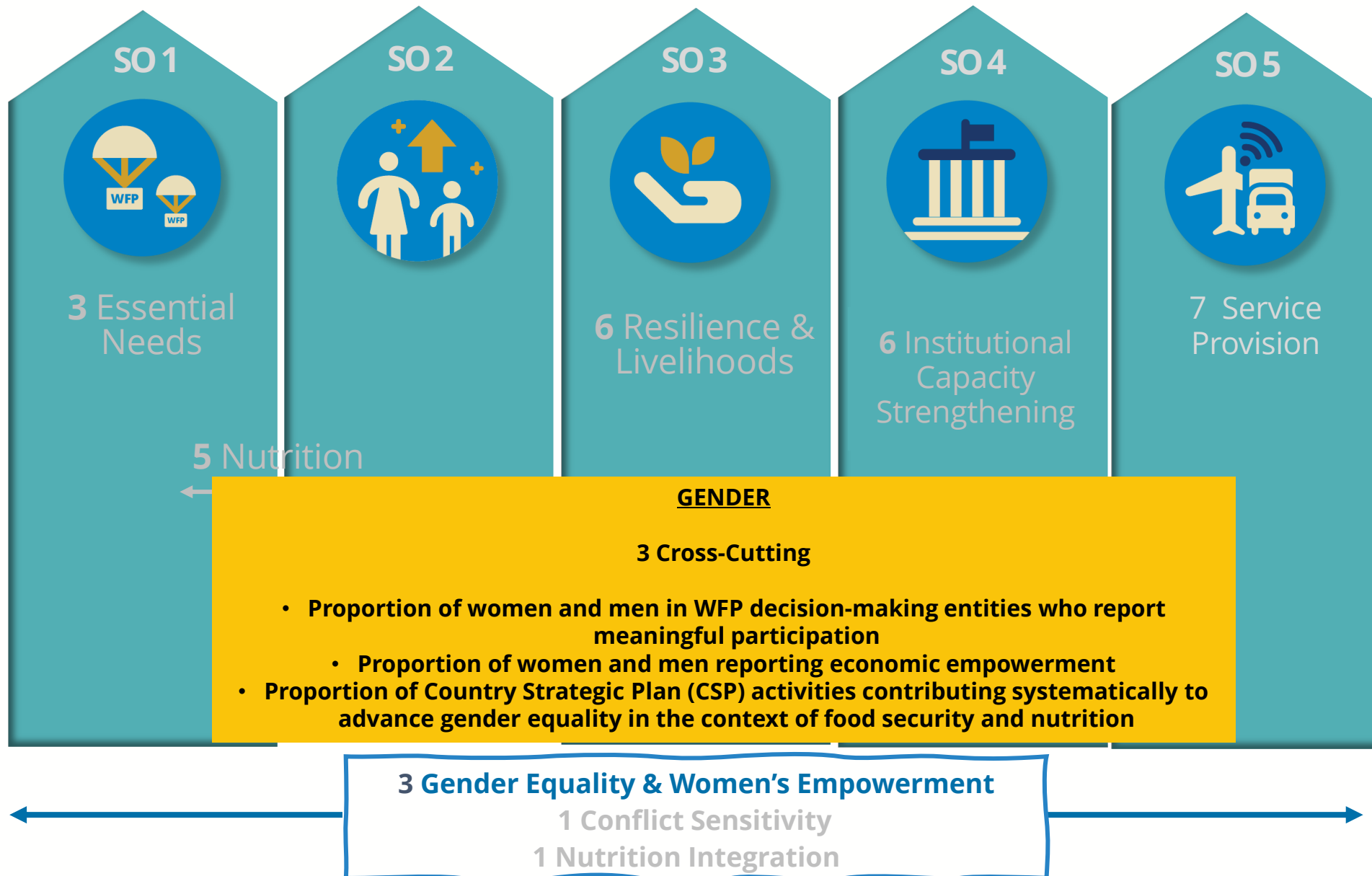


# IN DETAIL: 40 ADDITIONAL INDICATORS BY SO & THEMATIC AREA

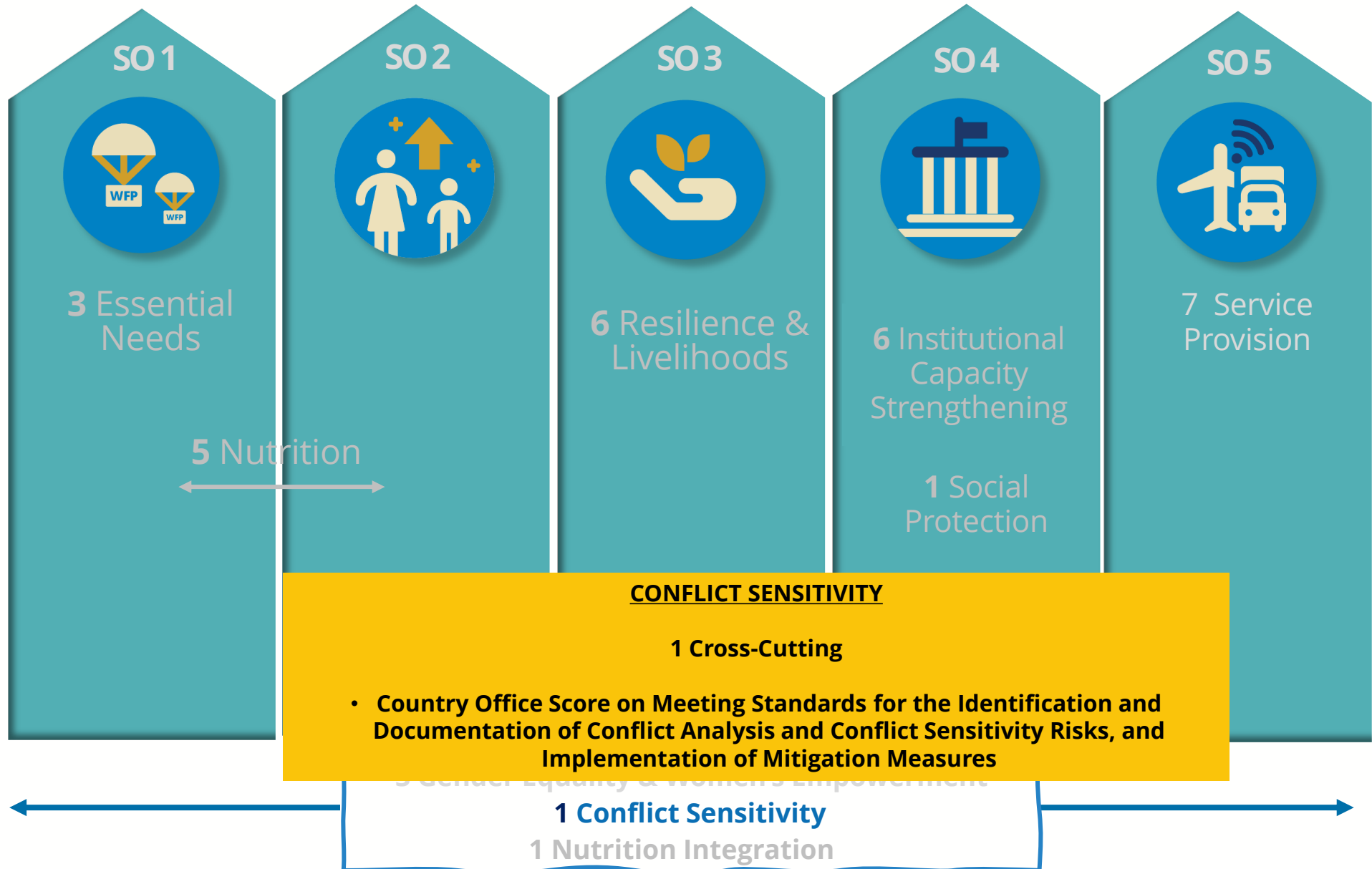




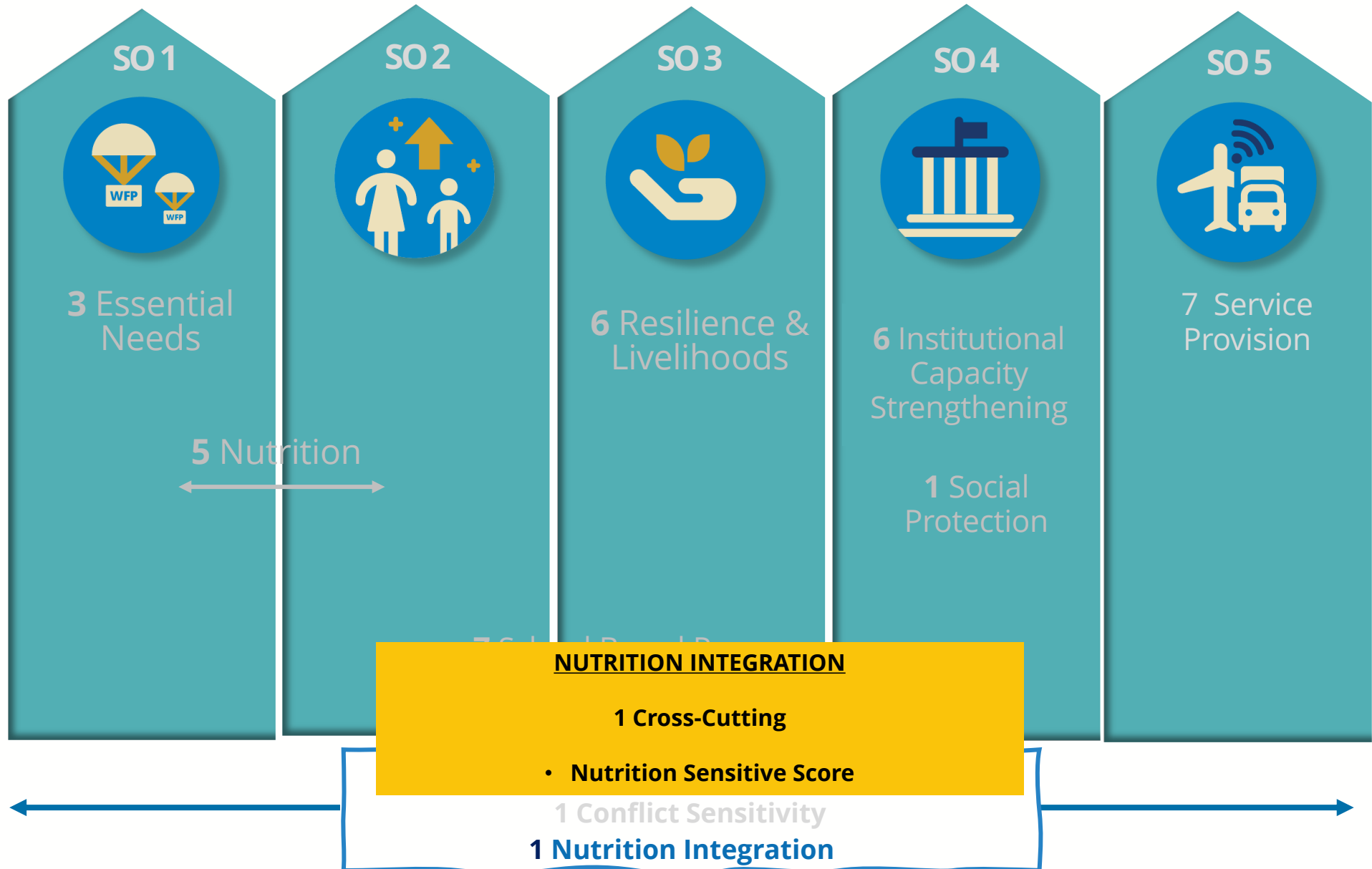
# IN DETAIL: 40 ADDITIONAL INDICATORS BY SO & THEMATIC AREA



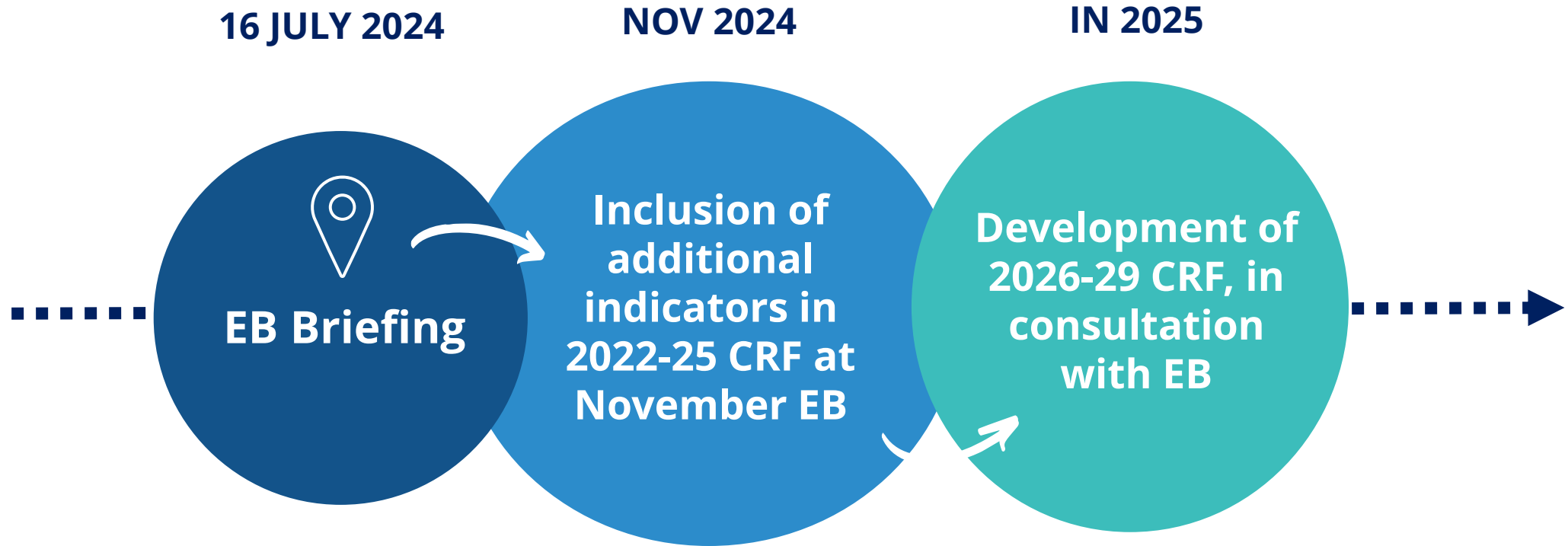
# IN DETAIL: 40 ADDITIONAL INDICATORS BY SO & THEMATIC AREA



# IN DETAIL: 40 ADDITIONAL INDICATORS BY SO & THEMATIC AREA



# NEXT STEPS



# **OPEN DISCUSSION & FEEDBACK**



**Thank you**

**LIST OF ADDITIONAL INDICATORS (please refer to the provided *Supplementary note* for a full list of indicators and their methodologies)**

<b>Programme area</b>	<b>Outcome indicator</b>
<b>Food security and essential needs</b>	Percentage of Essential Need Items Available to Beneficiaries in the Targeted Markets where WFP Operates
	Percentage Increase in Purchasing Power of WFP Voucher Beneficiaries
	Percentage of school-aged children meeting minimum dietary diversity score
<b>Nutrition</b>	Number of new or adapted national social protection programme made HIV/TB-sensitive as result of WFP's support
	Number of new or existing legislative instruments, standards or policies for fortified staple foods endorsed as result of WFP capacity strengthening support
	Percentage of individuals practicing recommended healthy diet behaviour (Indicator repeated under SO.1, SO.2, SO.3 & SO.4)
<b>School-based programmes</b>	Number of new or existing legislative instruments, standards or policies for fortified staple foods developed/adapted with WFP capacity strengthening support
	Resources mobilized (USD value) for national school Health and Nutrition/including School Feeding programmes with WFP capacity strengthening support and/or advocacy
	Percentage of children absent from school due to ill-health
	Percentage of Milestones in SABER-based implementation plan (related to full SABER exercise or Pre-Screening Tool) that have been fully met
<b>Resilience &amp; Livelihoods</b>	Transition strategy for School Health and Nutrition/including School feeding fully implemented by national stakeholder and WFP
	Shock Exposure Index (SEI)
	Proportion of people engaged in Income generating activities (IGA) as a result of skills development trainings (FFT)
<b>Institutional Capacity Strengthening</b>	Resilience Capacity Score (RCS)
	Number of people covered (WFP indirect beneficiaries) by national social protection systems or programmes to which WFP provided technical support
	Transition strategy for programmes or other system components contributing to Zero Hunger and other SDGs developed with WFP capacity strengthening support
	Number of policies and legislative instruments contributing to Zero Hunger and other SDGs created or adapted by national stakeholders with WFP capacity strengthening support
	Number of national policies, strategies, programmes and other system components contributing to Zero Hunger and other SDGs that have benefitted from WFP capacity strengthening support
	Number of Enhanced Programme Designs, Processes, and Platforms Contributing to Zero Hunger and other SDGs Implemented at Scale by National Organizations Following WFP Capacity Strengthening Support
	Number of enhanced business processes contributing to Zero Hunger and other SDGs implemented at scale by national stakeholders following WFP capacity strengthening support
Transition strategy for programmes or other system components contributing to Zero Hunger and other SDGs fully implemented by national stakeholder and WFP	
<b>Output category</b>	<b>Output indicator</b>
<b>A. Resources transferred</b>	Number of women, men, boys and girls receiving food/cash-based/commodity vouchers/individual capacity strengthening transfers through actions to protect against climate shocks
	Quantity of food provided to people and communities through actions to protect against climate shocks
	Total value of cash transferred to people through actions to protect against Climate Shocks
<b>C. Capacity development and technical support provided</b>	Number of girls and boys receiving food/cash-based transfers/commodity vouchers/capacity strengthening transfers through school-based programmes* (complementary with UNICEF, UNHCR, WFP)
	Percentage of Retailers with Overall Good Performance Score
<b>N. School feeding provided</b>	Value of school meal items sourced from smallholder farmers/other local actors
	Volume of school meal items sourced from smallholder farmers/other local actors
<b>H. Shared services and platforms provided</b>	Number of organizations engaged in cluster coordination activities/forums
	Number of destinations/service locations served
	Number of active UNHAS user organizations
	Number of timely medical and security evacuations performed
	Number of partners using Admin Platform to deliver services to beneficiaries
	USD Value of Efficiency Gains generated using the UN Booking Hub for external partners
Number of trucks deployed under Global Fleet service provision scheme in response to humanitarian needs	
<b>Cross-cutting Result</b>	<b>Cross-cutting indicator</b>
<b>Conflict Sensitivity</b>	Country Office Score on Meeting Standards for the Identification and Documentation of Conflict Analysis and Conflict Sensitivity Risks, and Implementation of Mitigation Measures
<b>Gender equality and women empowerment</b>	Proportion of women and men in WFP food assistance decision-making entities who report meaningful participation
	Proportion of women and men reporting economic empowerment
	Proportion of Country Strategic Plan (CSP) activities contributing systematically to advance gender equality in the context of food security and nutrition
<b>Nutrition Integration</b>	Nutrition sensitive score