



World Food Programme

SAVING
LIVES
CHANGING
LIVES

WFP Madagascar – 2G CSP 2024 - 2028

Presentation to the Executive Board, First Regular Session

February 2024

Madagascar Country Context



LIMITED AGRICULTURAL PRODUCTIVITY
and lack of crop diversification



HIGH VULNERABILITY TO CLIMATE CHANGE
due to recurring cyclones, droughts and floods



HIGH LEVELS OF POVERTY
77% of the population living in extreme poverty



HIGH FOOD INSECURITY
119 out of 121 countries on the 2022 Global Hunger Index



RAPID POPULATION GROWTH
Projected growth from 29 to 59 million by 2050



WIDESPREAD MALNUTRITION
39.8% of children <5 affected by stunting and 8% affected by wasting



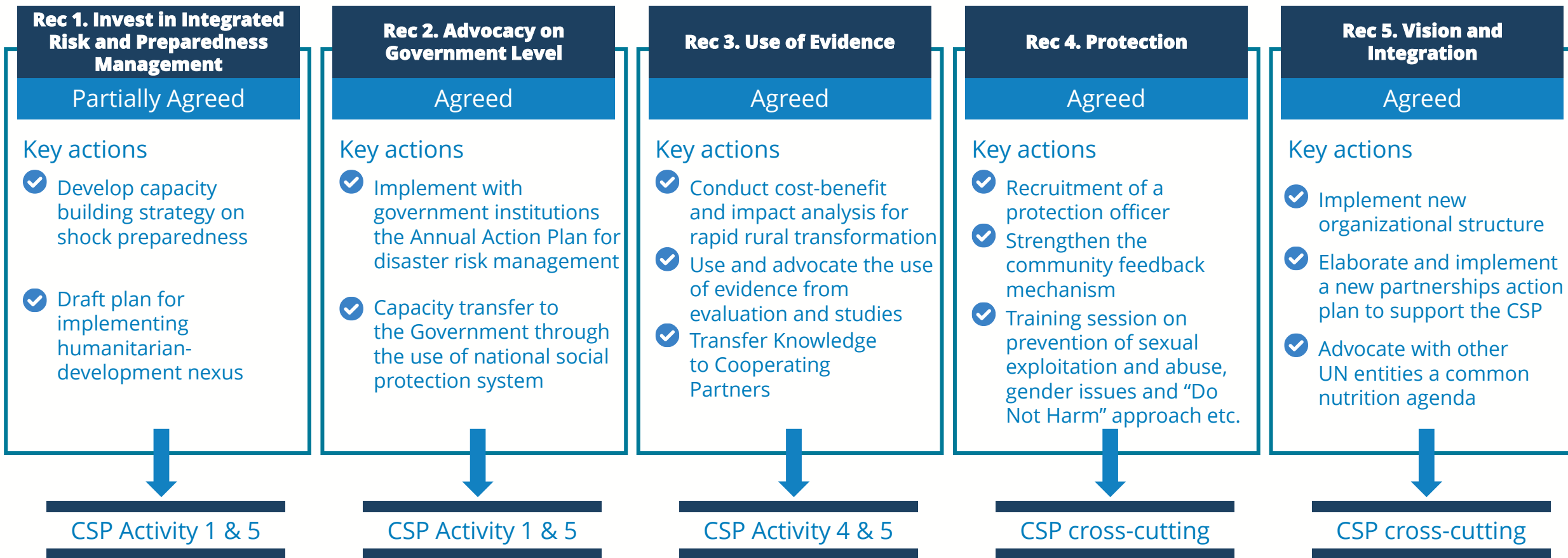
GENDER INEQUALITY AND PROTECTION RISKS
28% of women (15-49 years) experienced physical or sexual violence



VULNERABLE TO MACRO-ECONOMIC SHOCKS
such as high prices for food, fuel, fertilizers

Evaluation & Learning: Use of CSPE evidence in CSP design

Management Response to the CSP evaluation of Madagascar Country Office



2nd Generation CSP alignment

- National Development Plan
- National Strategy for:
 - Social Protection
 - Home-Grown School Feeding
 - Nutrition
 - Climate Change



National priorities



UNSDCF priorities

- #2: Human capital development
- #3: Labour productivity and competitive economy
- #4: Sustainable, resilient, inclusive environmental management

Outcome 1

People in Madagascar affected by seasonal or other shocks are prepared and able to meet their immediate food and nutrition needs throughout the year

Outcome 2

Groups at risk are part of the national social protection scheme with improved nutrition and education outcomes contributing to enhanced human capital development

Outcome 3

Communities benefit from productive, inclusive, and sustainable food systems that contribute to improved food diversity, livelihoods, and resilience to shocks

Outcome 4

Government and national stakeholders have enhanced capacities to manage food and nutrition programmes, social protection and emergency preparedness and response systems

Outcome 5

Government, humanitarian and development actors have improved access to mandated and on-demand services, and benefit from innovative solutions to deliver assistance

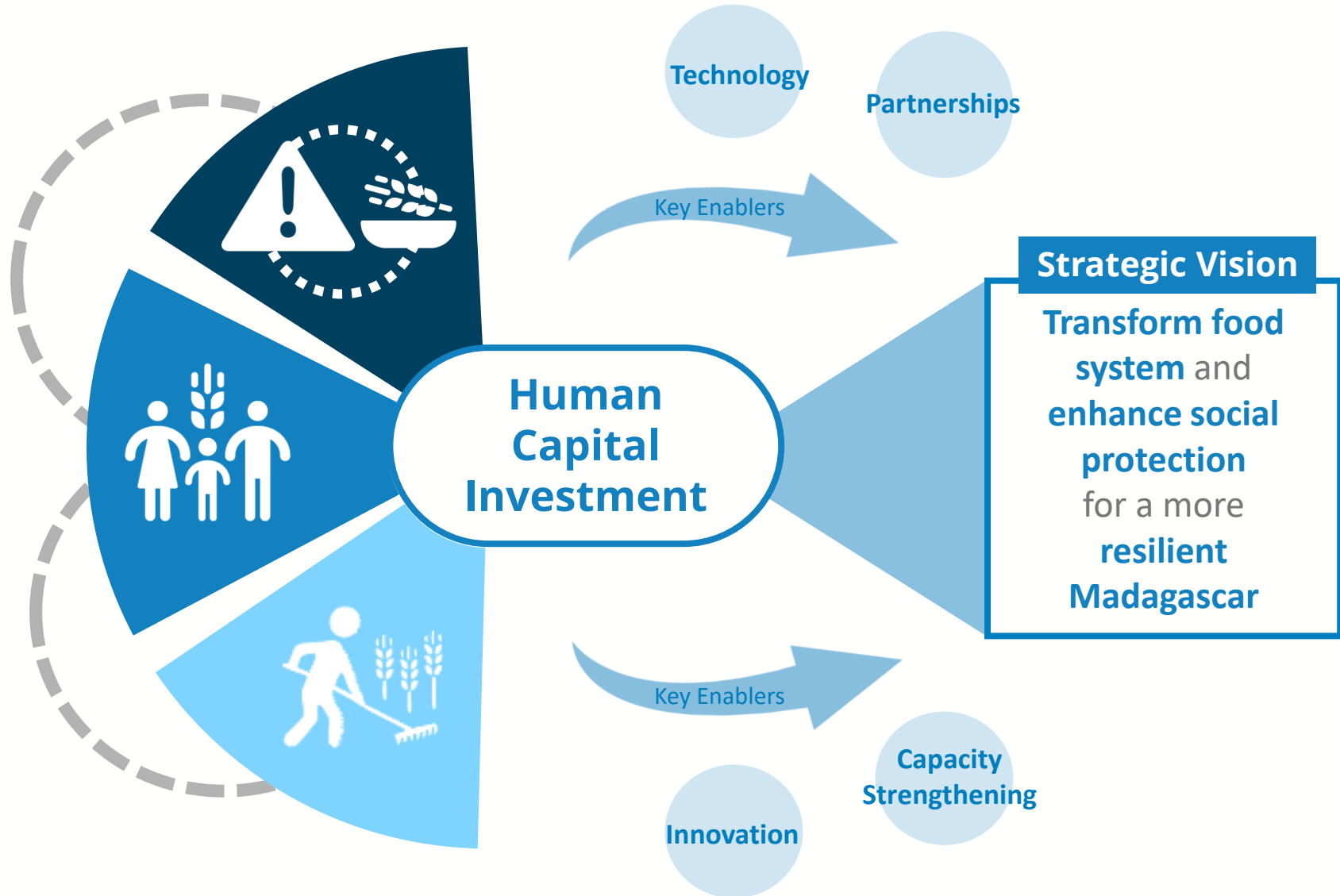
WFP Madagascar CSP

Strategic and programmatic vision

Nexus approach, emphasis on **preparedness** and shock-responsive social protection **and** emergency response

Support to the Government for an **inclusive** and **effective social protection system**

Increase resilience through **rural socio-economic transformation**



Thank you!

