



WFP Benin – 2G CSP 2024 - 2027

Presentation to the Executive Board, Second Regular Session

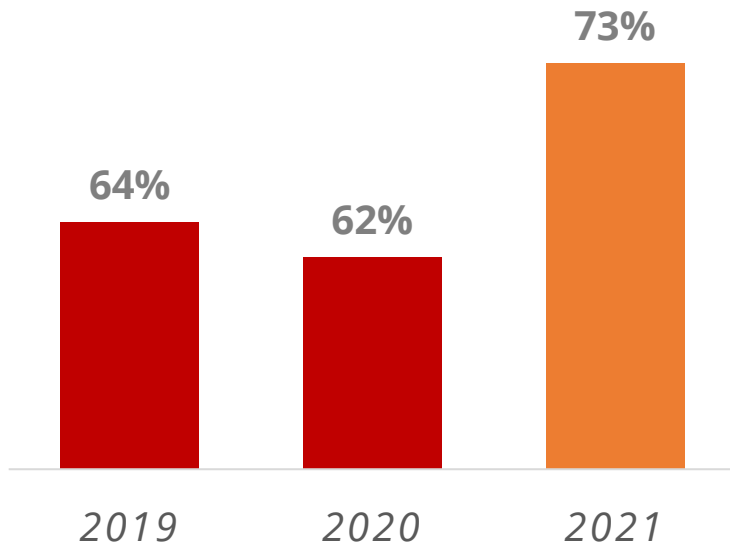
November 2023

Salient features of country context

1

Human Capital

Primary school completion rates

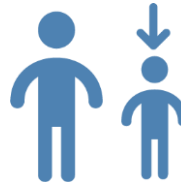


2

Food & Nutritional Security



410,000 Beninese are severely **food insecure**.



31.3% of children were **stunted** in 2020



72% of children under five suffered from **anaemia** in 2018

3

Shocks & Risks



16th most vulnerable country to **climate change**
133rd in terms of readiness

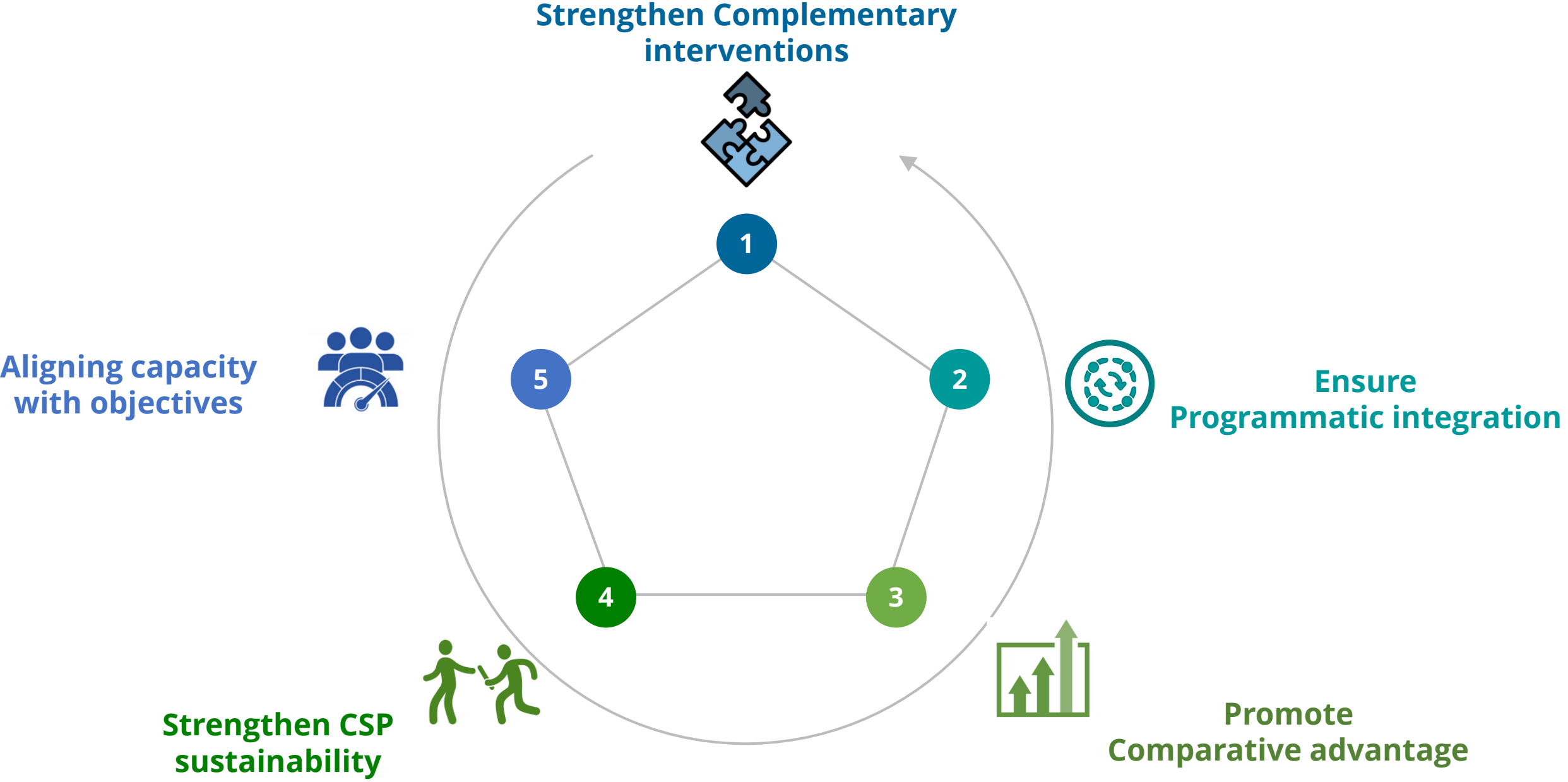


Disruption of seasonal **rainfall patterns**



Increase in **insecurity in the north** with **school closures** and increase of the number of **IDPs and refugees**.

Management responses to the CSPE



Benin CO strategic focus during 2024-2027



Government Action Plan
2021-2026



UNSDCF (2023-2026)
Highlighting priority areas for collaboration between
the UN system and the government



PNASI agreement (2023-2026)
between Government of Benin and
WFP

SDG 2 Zero Hunger

SDG 17 Partnerships

1

Provide **food and nutrition assistance** to shock affected people and technical assistance to strengthen **emergency preparedness and response capacities**

2

Provide **nutritious school meals** through an integrated and inclusive programme that **benefits the community**

3

Support **food value chain actors** to improve **availability of locally produced food** especially for school canteens

4

Provide technical assistance to national institutions to gradually take **operational ownership of the national school feeding programme**



Enhance joint programming and advocacy with **UN agencies** to improve synergies and progress towards the SDGs



Consolidate and diversify **donor base** (IFIs, private sector...) to secure flexible and multi-annual funding



Strengthen collaboration with the **Government** to enhance capacities and accelerate handover

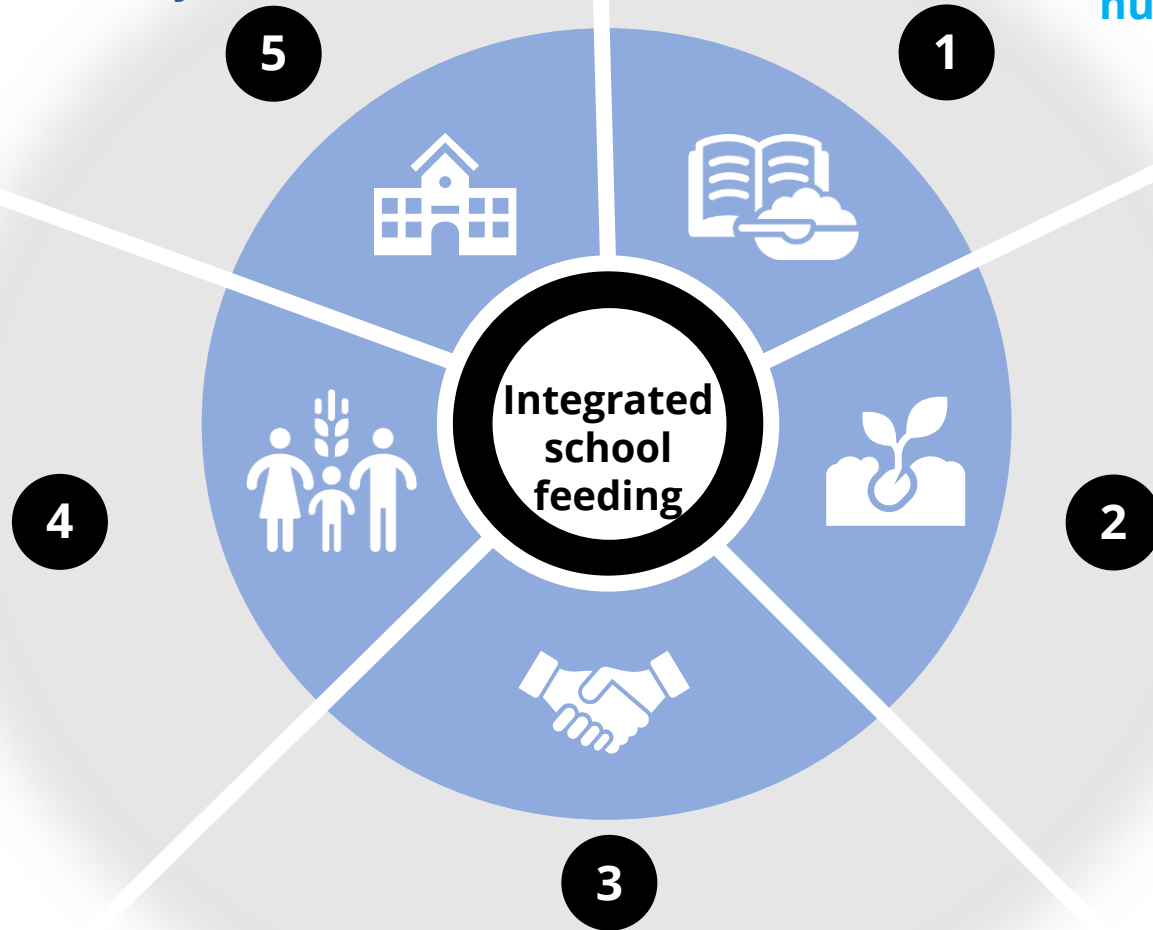
An integrated approach articulated around school feeding

Integration of crosscutting themes such as gender, protection, nutrition, environment through complimentary activities and partnerships

Linking school meals to education, agriculture, nutrition and health

Strengthen community participation, resilience and cohesion

Support to smallholder farmers through HGSF to foster more resilience in food value chains



Local procurement for more nutritious meals and positive impacts on the local economy

Thank you!

