



**WFP EVALUATION**

# Evaluation Work Plan 2024-2026

WFP Office of Evaluation

May 2023



World Food Programme

SAVING  
LIVES  
CHANGING  
LIVES

Anne-Claire Luzot  
Director of Evaluation a.i.

# KEY PRIORITIES FOR THE EVALUATION FUNCTION



1

Independent,  
credible and  
useful  
centralized  
and  
decentralized  
evaluations



2

Appropriate  
centralized  
and  
decentralized  
evaluation  
coverage



3

Evaluation  
evidence is  
systematically  
available and  
accessible to  
meet the  
needs of WFP  
and partners



4

Adequate  
evaluation  
management  
capacity  
across WFP



5

Active  
evaluation  
partnerships  
in  
international  
arena

**PROPOSED PROGRAMME OF WORK  
FOR CENTRALIZED EVALUATIONS  
2024–2026**

# POLICY EVALUATIONS

2023	2024	2025	2026
<p><i>Continued from 2022:</i></p> <ul style="list-style-type: none"> <li>• Resilience (A/2023)</li> <li>• Disaster Risk Reduction and Climate Change (A/2023)</li> <li>• Country Strategic Plans (A/2023)</li> </ul>	<p><i>Continued from 2023:</i></p> <ul style="list-style-type: none"> <li>• Environment (1/2025)</li> <li>• Emergency Preparedness (1/2025)</li> </ul>	<p><i>Continued from 2024:</i></p> <ul style="list-style-type: none"> <li>• Enterprise Risk Management</li> </ul>	<p><i>Continued from 2025:</i></p> <ul style="list-style-type: none"> <li>• Local and regional food procurement</li> </ul>
<p><i>New starts:</i></p> <ul style="list-style-type: none"> <li>• Environment (1/2025)</li> <li>• Emergency Preparedness (1/2025)</li> </ul>	<p><i>New start:</i></p> <ul style="list-style-type: none"> <li>• Enterprise Risk Management</li> </ul>	<p><i>New start:</i></p> <ul style="list-style-type: none"> <li>• Local and regional food procurement</li> </ul>	<p><i>New starts:</i></p> <ul style="list-style-type: none"> <li>• Protection and accountability</li> <li>• Workforce management</li> </ul>

# STRATEGIC EVALUATIONS

2023	2024	2025	2026
<p><i>Continued from 2022:</i></p> <ul style="list-style-type: none"> <li>• Protection from Sexual Exploitation and Abuse (A/2024)</li> </ul>	<p><i>Continued from 2023:</i></p> <ul style="list-style-type: none"> <li>• Mid-Term Evaluation of Strategic Plan (2022-2025) (2/2024)</li> <li>• Refugees and displacement (A/2025)</li> </ul>	<p><i>Continued from 2024:</i></p> <ul style="list-style-type: none"> <li>• Supply Chain Roadmap</li> <li>• Vulnerability assessment, analysis and targeting</li> </ul>	<p>Continued from 2025:</p> <ul style="list-style-type: none"> <li>• Knowledge management</li> <li>• Additional topic TBC (e.g. Triple nexus; Middle Income Countries, Leave no one behind)</li> </ul>
<p><i>New starts:</i></p> <ul style="list-style-type: none"> <li>• Mid-Term Evaluation of Strategic Plan (2022-2025) (2/2024)</li> <li>• Refugees and displacement (A/2025)</li> </ul>	<p><i>New starts:</i></p> <ul style="list-style-type: none"> <li>• Supply Chain Roadmap (2022-25)</li> <li>• Vulnerability assessment, analysis and targeting</li> </ul>	<p><i>New starts:</i> <i>(Sequencing to be confirmed)</i></p> <ul style="list-style-type: none"> <li>• Knowledge management</li> <li>• Additional topic TBC (e.g. Triple nexus; Middle Income Countries, Leave no one behind)</li> </ul>	<p><i>New starts:</i></p> <ul style="list-style-type: none"> <li>• Two new topics to be confirmed</li> </ul>

# EVALUATION SYNTHESSES

2023	2024	2025	2026
<p><i>Continued from 2022:</i></p> <ul style="list-style-type: none"> <li>SDG Coalition Joint Synthesis (Partnership Pillar)</li> </ul>	<p><i>Continued from 2023:</i></p> <ul style="list-style-type: none"> <li>SDG Coalition Joint Synthesis (Partnership Pillar; People Pillar co-lead)</li> <li>Cooperating Partners</li> </ul>	<p><i>Continued from 2024:</i></p> <ul style="list-style-type: none"> <li>New topic to be determined</li> </ul>	<p><i>Continued from 2025:</i></p> <ul style="list-style-type: none"> <li>New topic to be determined</li> </ul>
<p><i>New start:</i></p> <ul style="list-style-type: none"> <li>Cooperating Partners</li> <li>SDG Coalition Joint Synthesis (People Pillar co-lead)</li> </ul>	<p><i>New start:</i></p> <ul style="list-style-type: none"> <li>New topic to be determined</li> </ul>	<p><i>New start:</i></p> <ul style="list-style-type: none"> <li>New topic to be determined</li> </ul>	<p><i>New start:</i></p> <ul style="list-style-type: none"> <li>New topic to be determined</li> </ul>

# GLOBAL JOINT EVALUATIONS

	2023	2024	2025	2026
	<p><i>Continued from 2022:</i></p> <ul style="list-style-type: none"> <li>Independent Joint Evaluation: The Work of the Joint UN Programme on HIV and Social Protection (<i>co-managed UNAIDS, WFP, UNICEF and ILO</i>)</li> </ul>			
	<p>New start:</p> <ul style="list-style-type: none"> <li>COVID 19 Global Evaluation Coalition: Strategic joint evaluation of the collective international development and humanitarian assistance response to covid 19</li> </ul>	<p><i>Continued from 2023:</i></p> <ul style="list-style-type: none"> <li>COVID 19 Global Evaluation Coalition: Strategic joint evaluation of the collective international development and humanitarian assistance response to covid 19</li> </ul>	<p><i>Consultation on topics for new joint evaluations on-going</i></p> <p><i>New start:</i></p> <ul style="list-style-type: none"> <li>New topics to be determined</li> </ul>	<p><i>Consultation on topics for new joint evaluations on-going</i></p> <p><i>New start:</i></p> <ul style="list-style-type: none"> <li>New topics to be determined</li> </ul>

# COUNTRY STRATEGIC PLAN EVALUATIONS

2023 14 ongoing CSPE & 10 new CSPE		2024 16 CSPE	2025 10 CSPE	2026 13 CSPE
<p><b>Ongoing:</b></p> <ul style="list-style-type: none"> <li>• Benin CSP</li> <li>• Bhutan CSP</li> <li>• Burkina Faso CSP</li> <li>• Cambodia CSP</li> <li>• Dominican Republic CSP</li> <li>• Ghana CSP</li> <li>• Haiti CSP</li> <li>• Madagascar CSP</li> <li>• Malawi CSP</li> <li>• Namibia CSP</li> <li>• Nepal CSP</li> <li>• Philippines CSP</li> <li>• Senegal CSP</li> <li>• Syrian Arab Republic ICSP</li> </ul>	<p><b>New starts:</b></p> <ul style="list-style-type: none"> <li>• Colombia CSP</li> <li>• Congo CSP</li> <li>• Cuba CSP</li> <li>• Ethiopia CSP</li> <li>• Guinea ICSP</li> <li>• Iraq CSP</li> <li>• Lesotho CSP</li> <li>• Mali CSP</li> <li>• Rwanda CSP</li> <li>• Sierra Leone CSP</li> </ul>	<p><b>New starts:</b></p> <ul style="list-style-type: none"> <li>• Armenia CSP</li> <li>• China CSP</li> <li>• Côte d'Ivoire CSP</li> <li>• Democratic Republic of Congo CSP</li> <li>• Eswatini CSP</li> <li>• Indonesia CSP</li> <li>• Iran ICSP</li> <li>• Lebanon CSP</li> <li>• Libya ICSP</li> <li>• Somalia CSP</li> <li>• South Sudan CSP</li> <li>• Tunisia CSP</li> <li>• Turkey ICSP</li> <li>• Uganda CSP</li> <li>• Yemen ICSP</li> <li>• Timor Leste CSP</li> </ul>	<p><b>New starts:</b></p> <ul style="list-style-type: none"> <li>• Bangladesh CSP</li> <li>• Cameroon CSP</li> <li>• Caribbean MCSP</li> <li>• El Salvador CSP</li> <li>• Laos CSP</li> <li>• Mozambique CSP</li> <li>• Peru CSP</li> <li>• Togo CSP</li> <li>• Tajikistan CSP</li> <li>• Zimbabwe CSP</li> </ul>	<p><b>New starts:</b></p> <ul style="list-style-type: none"> <li>• Central African Republic CSP</li> <li>• Nigeria CSP</li> <li>• Plurinational State of Bolivia CSP</li> <li>• Ecuador CSP</li> <li>• Honduras CSP</li> <li>• Guinea-Bissau CSP</li> <li>• Jordan CSP</li> <li>• Sri Lanka CSP</li> <li>• Kyrgyz Republic CSP</li> <li>• India CSP</li> <li>• Pakistan CSP</li> <li>• El Salvador CSP</li> <li>• Tanzania CSP</li> </ul>



# EVALUATIONS OF EMERGENCY RESPONSES

	2023	2024	2025	2026
<b>Corporate emergency response evaluations (CEE)</b>	<p><i>Continued from 2022:</i></p> <ul style="list-style-type: none"> <li>WFP response in Myanmar</li> <li>WFP response in the Sahel</li> </ul> <p><i>New start</i></p> <ul style="list-style-type: none"> <li><b>WFP response in Ukraine</b></li> </ul>	<p><i>Continued from 2023:</i></p> <ul style="list-style-type: none"> <li>WFP response in the Sahel</li> <li>WFP response in Ukraine</li> </ul> <p><i>New start</i></p> <ul style="list-style-type: none"> <li>New topic to be determined</li> </ul>	<p><i>New start</i></p> <ul style="list-style-type: none"> <li>1 topic to be determined</li> </ul>	<p><i>New start</i></p> <ul style="list-style-type: none"> <li>1 topic to be determined</li> </ul>
<b>Inter-agency humanitarian evaluations (IAHE)</b>	<p><i>Continued from 2022:</i></p> <ul style="list-style-type: none"> <li>Response to the humanitarian crisis in Afghanistan</li> <li>Response to the humanitarian crisis in Northern Ethiopia</li> </ul> <p><i>New start:</i></p> <ul style="list-style-type: none"> <li>Response to the humanitarian crisis in Ukraine (tbc)</li> </ul>	<p>Continued from 2023:</p> <ul style="list-style-type: none"> <li>Response to the humanitarian crisis in Ukraine</li> </ul> <p>New start:</p> <ul style="list-style-type: none"> <li>Response to the humanitarian crisis in Somalia (TBC)</li> </ul>	<p><i>New starts:</i></p> <ul style="list-style-type: none"> <li>1 to 2 topics to be determined</li> </ul>	<p><i>New starts:</i></p> <ul style="list-style-type: none"> <li>1 to 2 topics to be determined</li> </ul>

# **PROGRAMME OF WORK FOR IMPACT EVALUATIONS**

# IMPACT EVALUATION PRIORITIES



Cash-based Transfers and Gender



Climate Change and Resilience



School-based Programmes



Nutrition (launch TBC)



Humanitarian Workstream

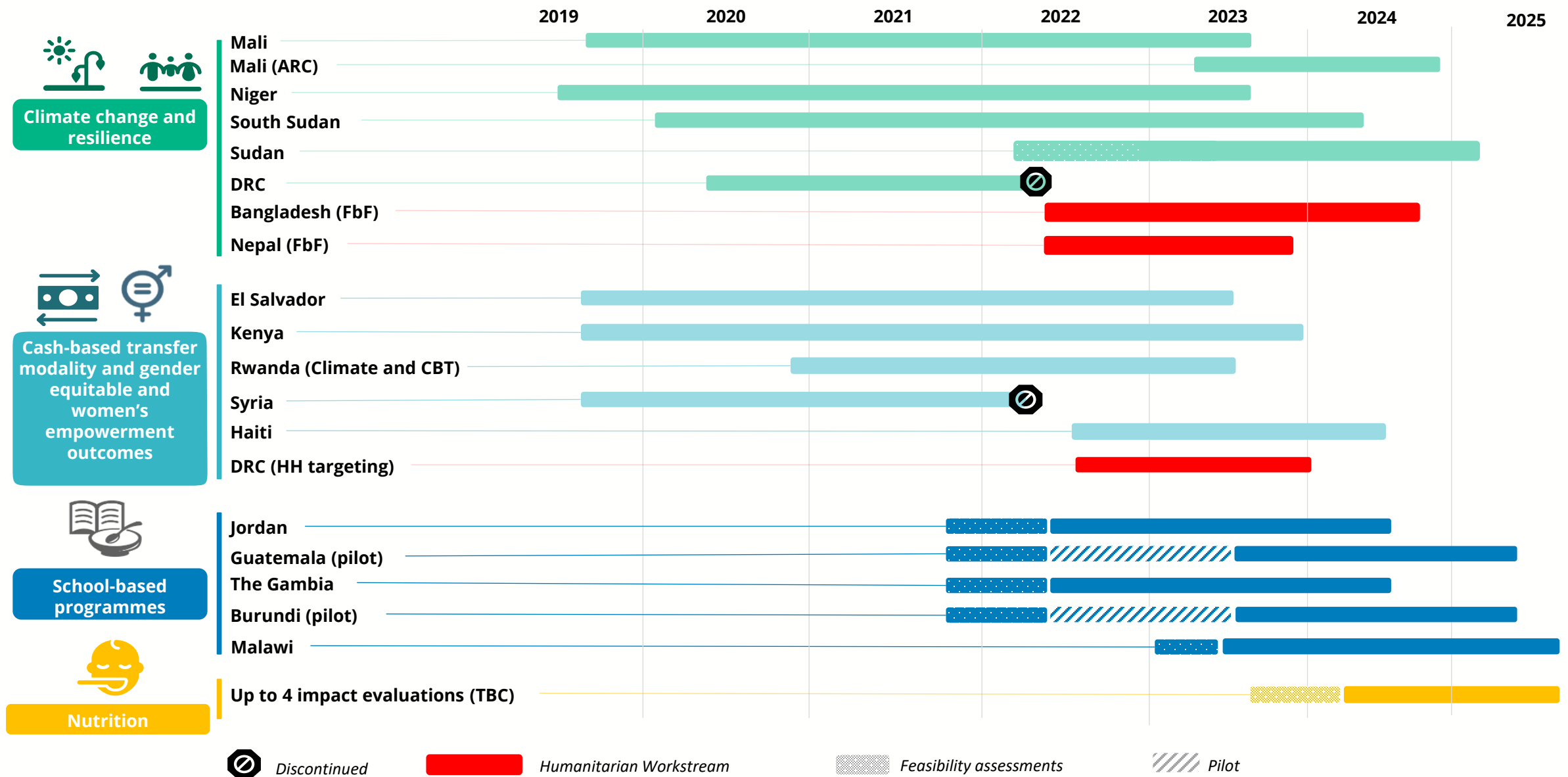
Preparedness

Needs & targeting

Intervention

Transitions

# IMPACT EVALUATIONS 2019–2025



Discontinued

Humanitarian Workstream

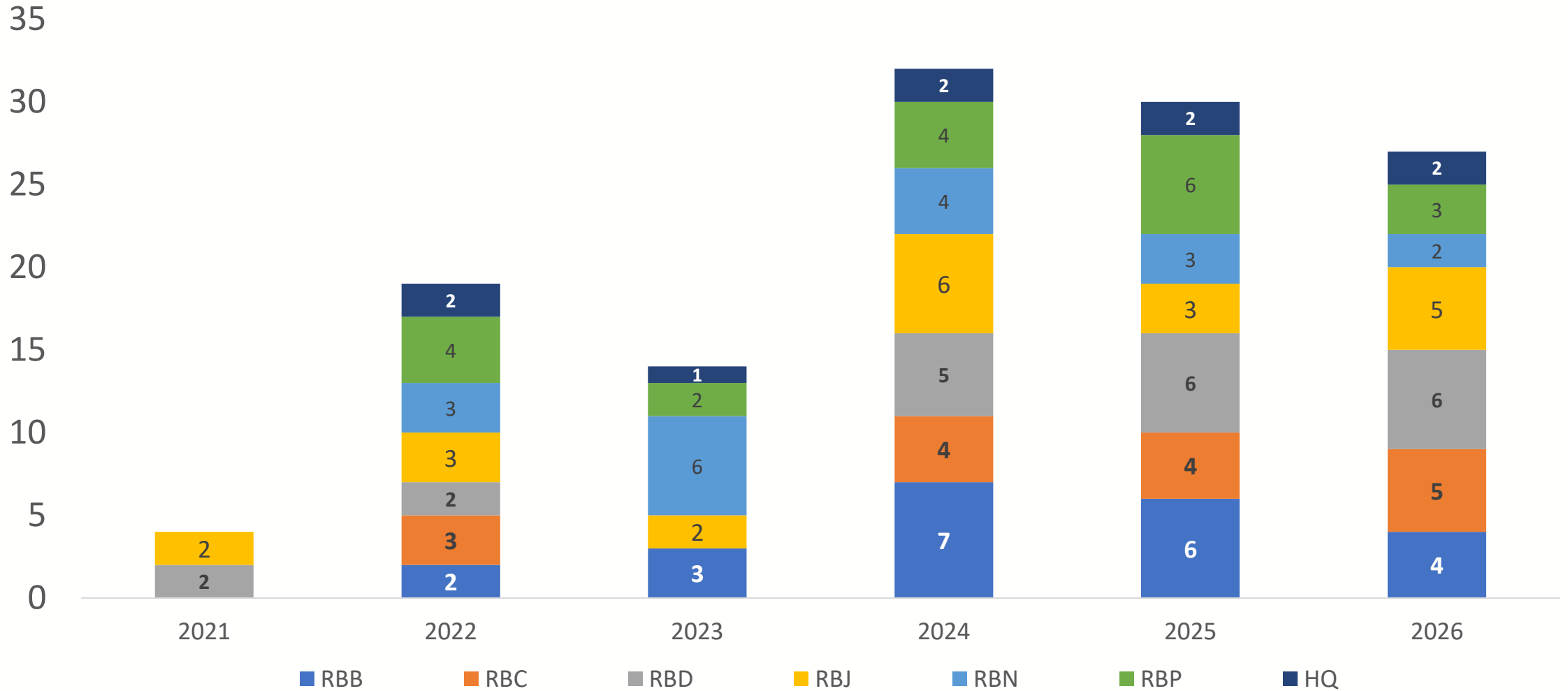
Feasibility assessments

Pilot

# **PROGRAMME OF WORK FOR DECENTRALISED EVALUATIONS**

# DECENTRALIZED EVALUATIONS

Ongoing and planned decentralized evaluations by Start Year and by Region/HQ



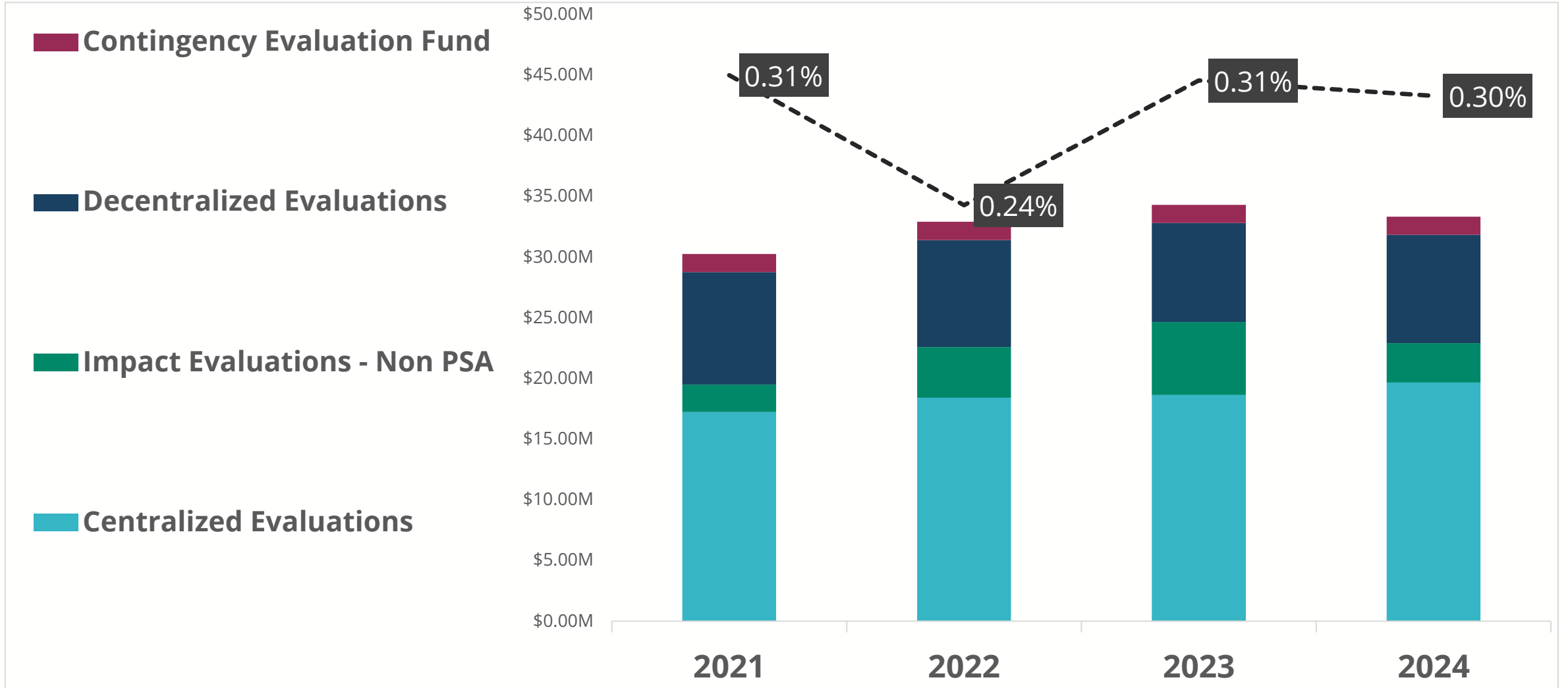
**QUESTIONS ON PROGRAMME OF WORK?**

# FINANCIAL RESOURCE REQUIREMENTS 2024



# RESOURCES ALLOCATED TO EVALUATION

RESOURCES ALLOCATED TO EVALUATION AS PERCENTAGE OF WFP TOTAL CONTRIBUTION INCOME, 2021-2024



WFP total contribution figure 2021 & 2022  
Projected WFP total contribution revenue 2023 & 2024

Needs-based plan

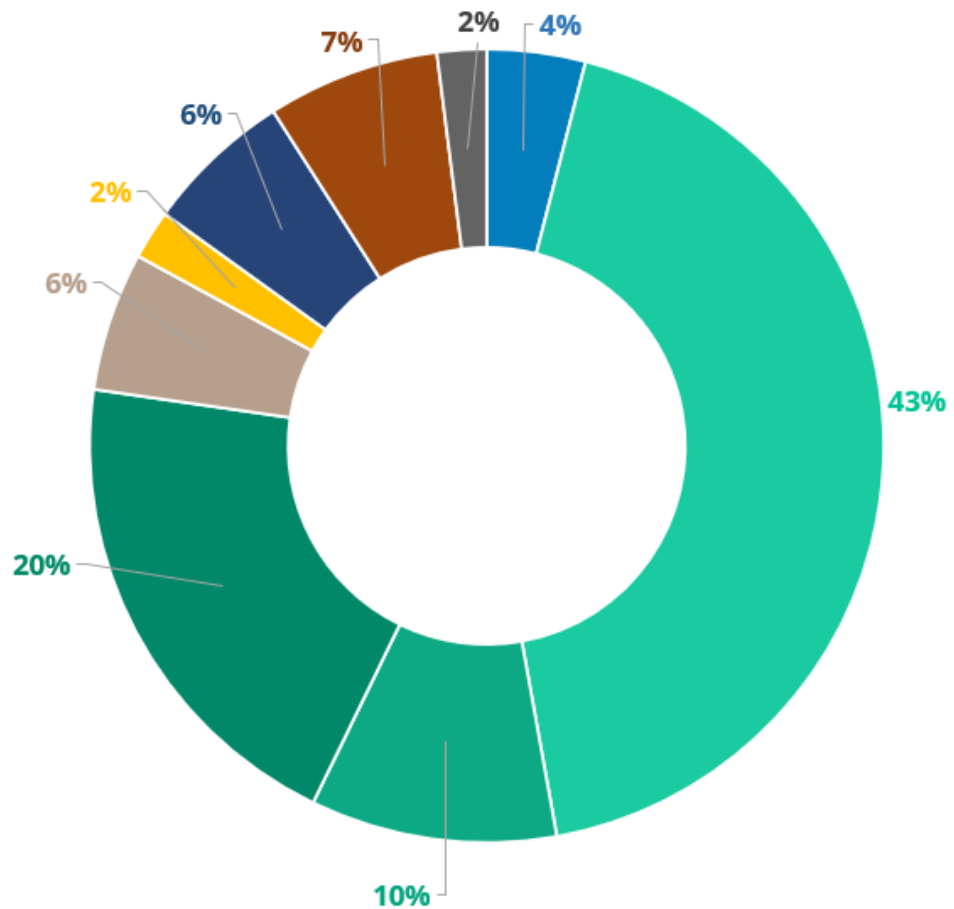
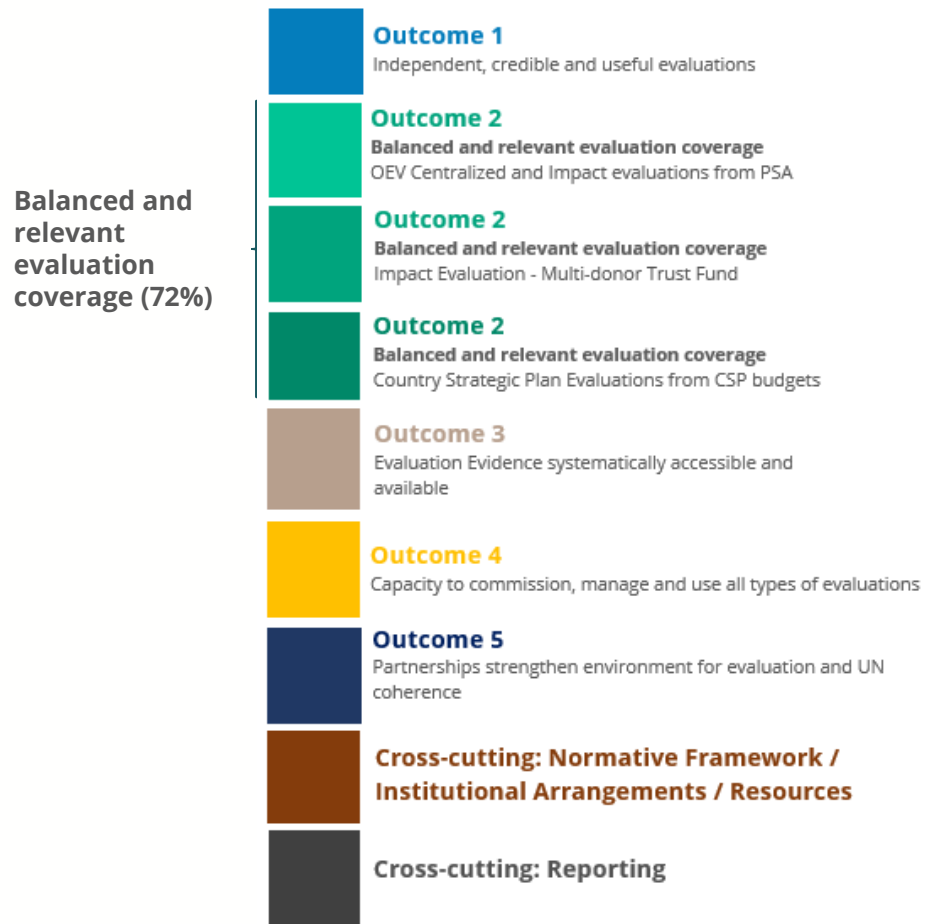
# OEV MANAGEMENT PLAN SUBMISSION 2024

	Needs-Based Requirements 2023 (USDM)
	2023
<b>PSA Priority 1</b>	\$ 16.1
PSA Other Costs	\$ 6.3
PSA Staff Costs (Fixed Term & CST)	\$ 9.8
<b>PSA Priority 2</b>	
<b>PSA Total</b>	
CCI	
Contingency Evaluation Fund (CEF)	\$ 1.5
MDTF for Impact Evaluations	\$ 0.6
<b>Grand Total</b>	\$ 18.2

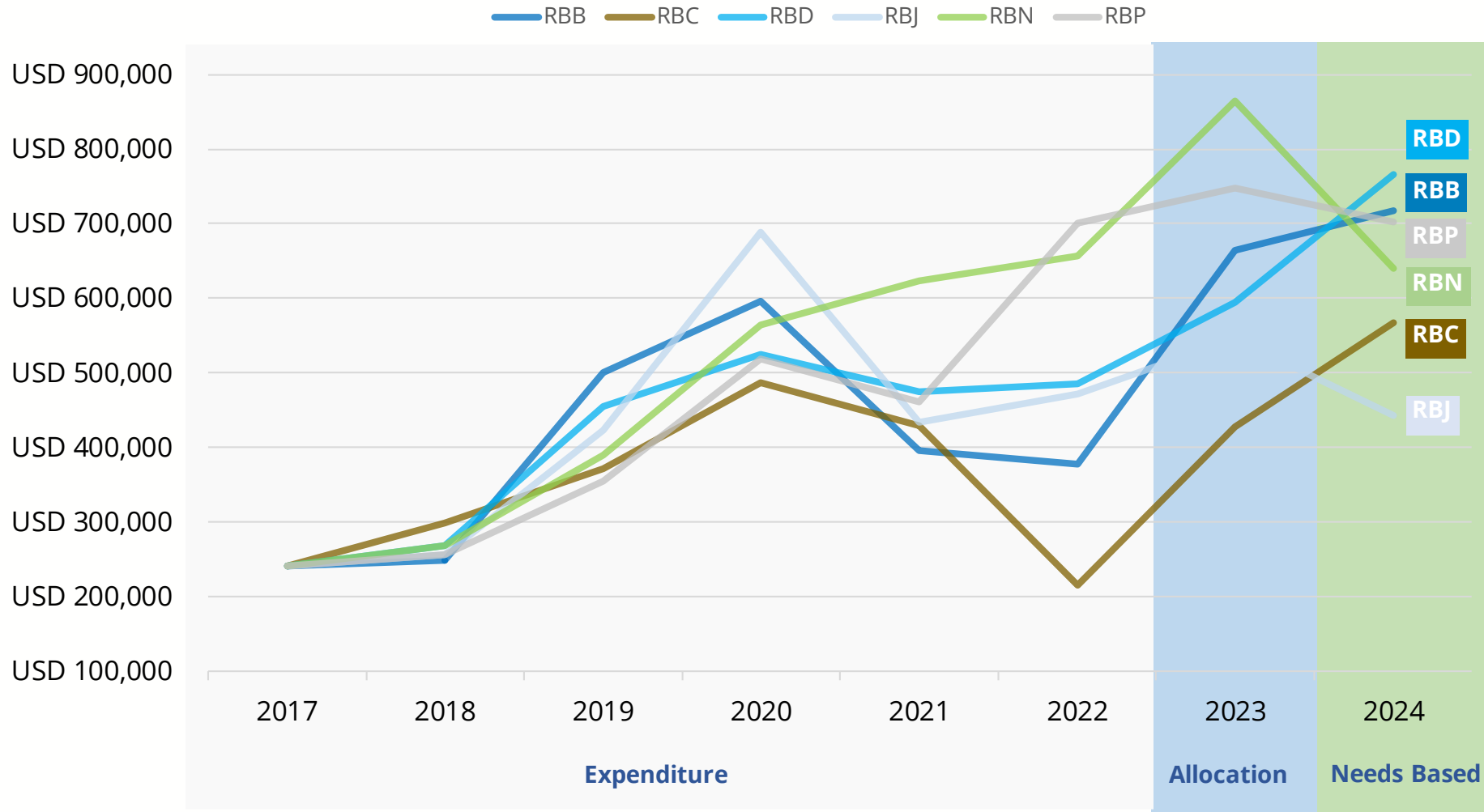
Resources Approved MP 2023 (USDM)	Needs-Based Requirements 2024 (USDM)	
2023	2024	% Change
\$ 15.9	\$ 14.8	7% decrease
\$ 6.0	\$ 4.7	
\$ 10.0	\$ 10.1	
	\$ 0.9	
\$ 15.9	\$ 15.7	1.5% decrease
\$ 0.5		
\$ 1.5	\$ 1.5	
\$ 0.6	\$ 0.5	
\$ 18.5	\$ 17.7	

PSA Staff Costs updated to reflect revised position rates in Resources Approved MP 2023  
 MDTF subject to annual fluctuations based on donor contributions

# RESOURCES FOR OEV: CENTRALIZED, DECENTRALIZED AND IMPACT EVALUATIONS 2024

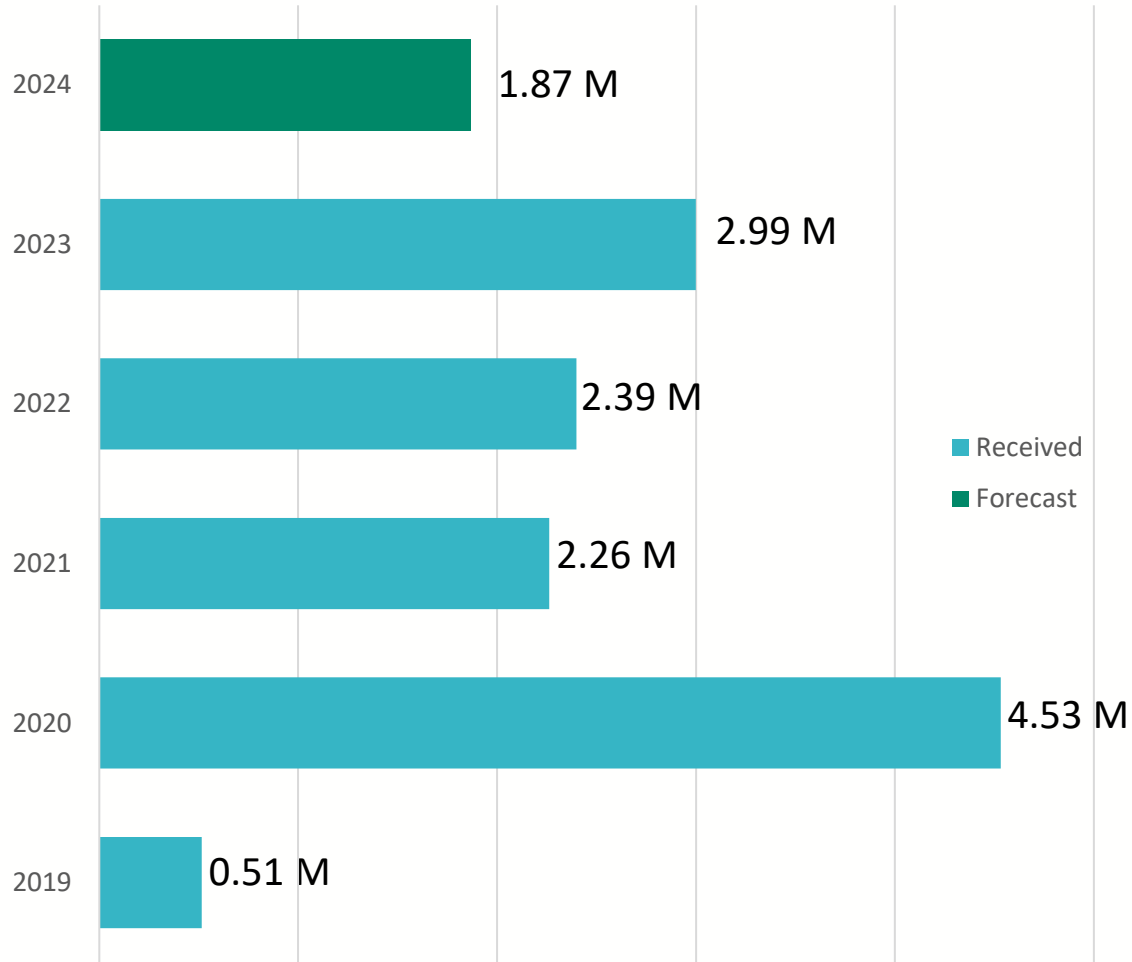


# EVOLUTION OF REGIONAL EVALUATION BUDGETS 2017 –2024



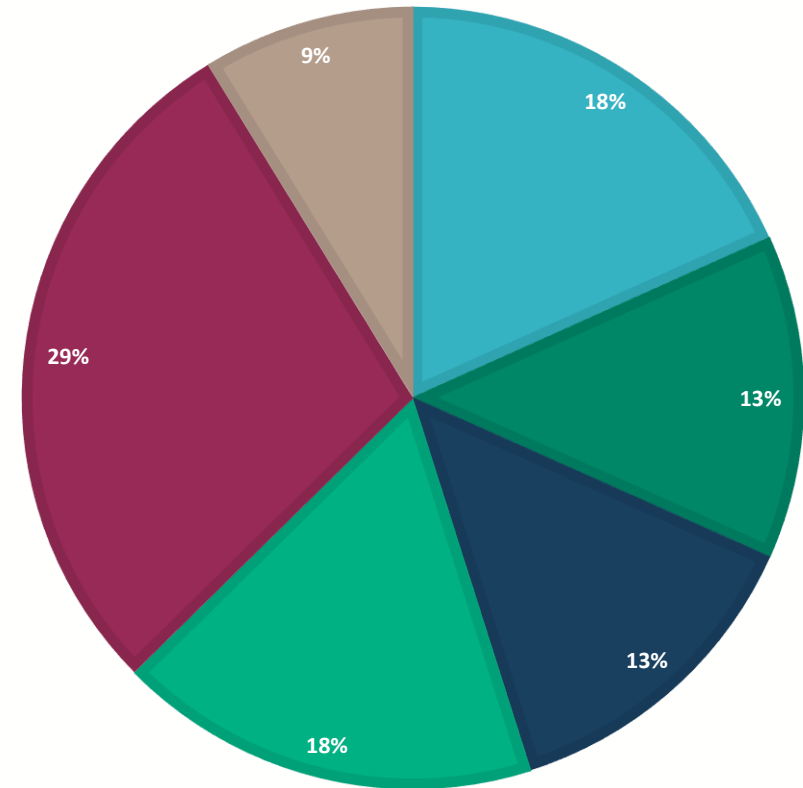
2019 PSA and Multi-lateral TDD dates were extended up to 31 August 2020 explaining why expenditures were high in 2020. 2021 expenditure figures includes also against one investment case for RBN. 2023 shows overall allocated funding to RBs for evaluation, 2024 shows resources requested and is indicative.

# MULTI-DONOR TRUST FUND RESOURCES FOR IMPACT EVALUATION



TOTAL CONTRIBUTIONS BY YEAR

- C&R window - DRC (BMZ)
- C&R window - Mali (BMZ)
- C&R window - Niger (BMZ)
- C&R window - South Sudan (BMZ)
- Humanitarian workstream (USAID)
- SBP window - Malawi (NORAD)

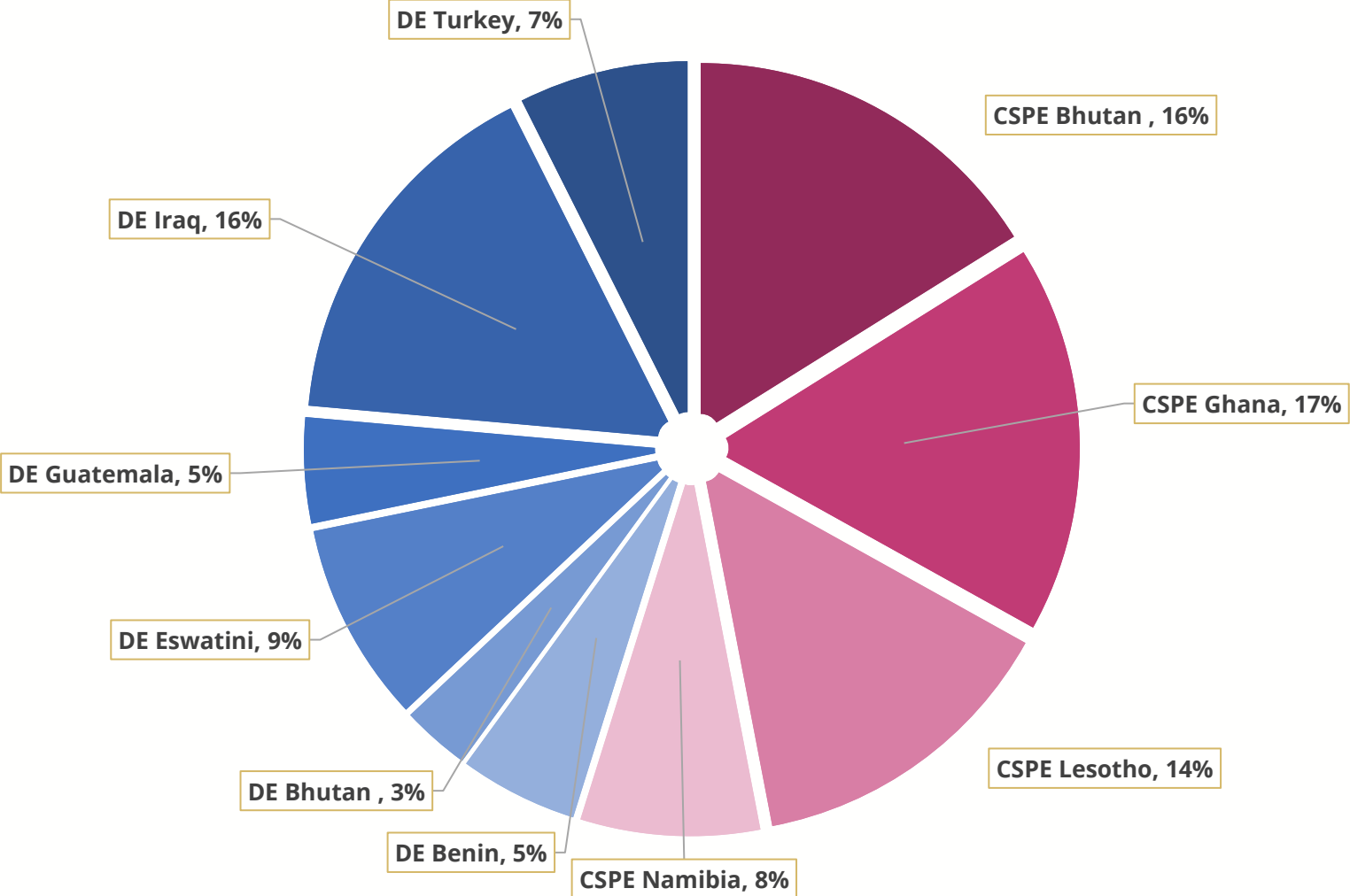


TOTAL FUNDS ALLOCATED 2019-2023 BY DONOR AND ACTIVITY

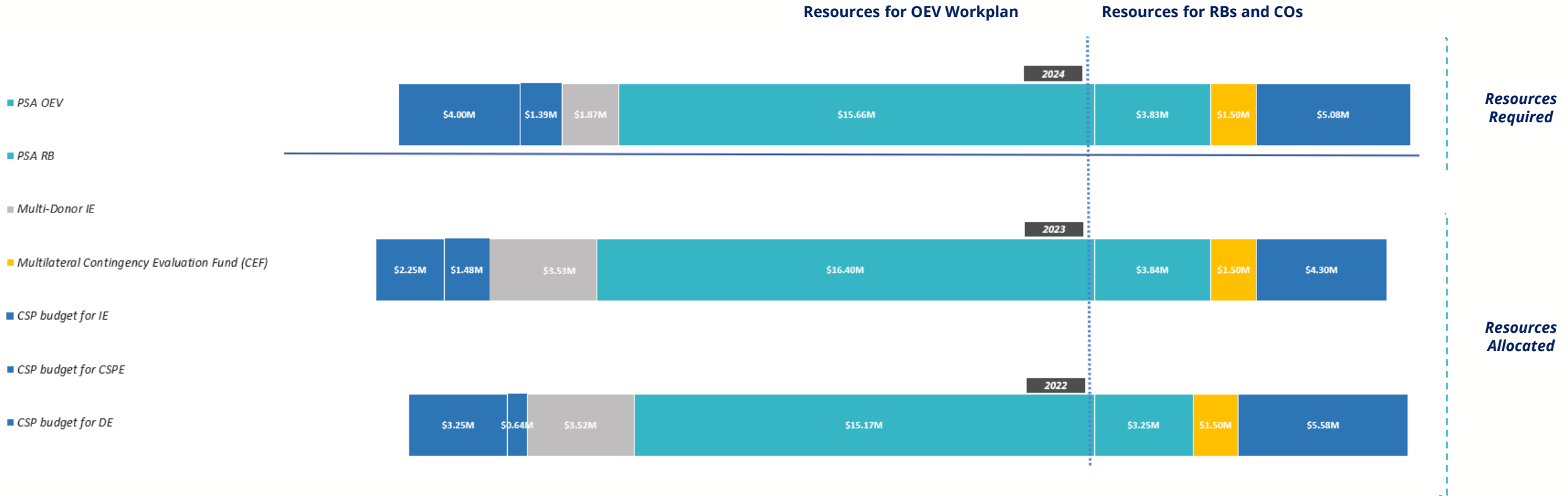
# CONTINGENCY EVALUATION FUND (CEF) ALLOCATIONS 2022

Total: USD 732,633

CSPE : USD 401,682 DE : USD 330,950



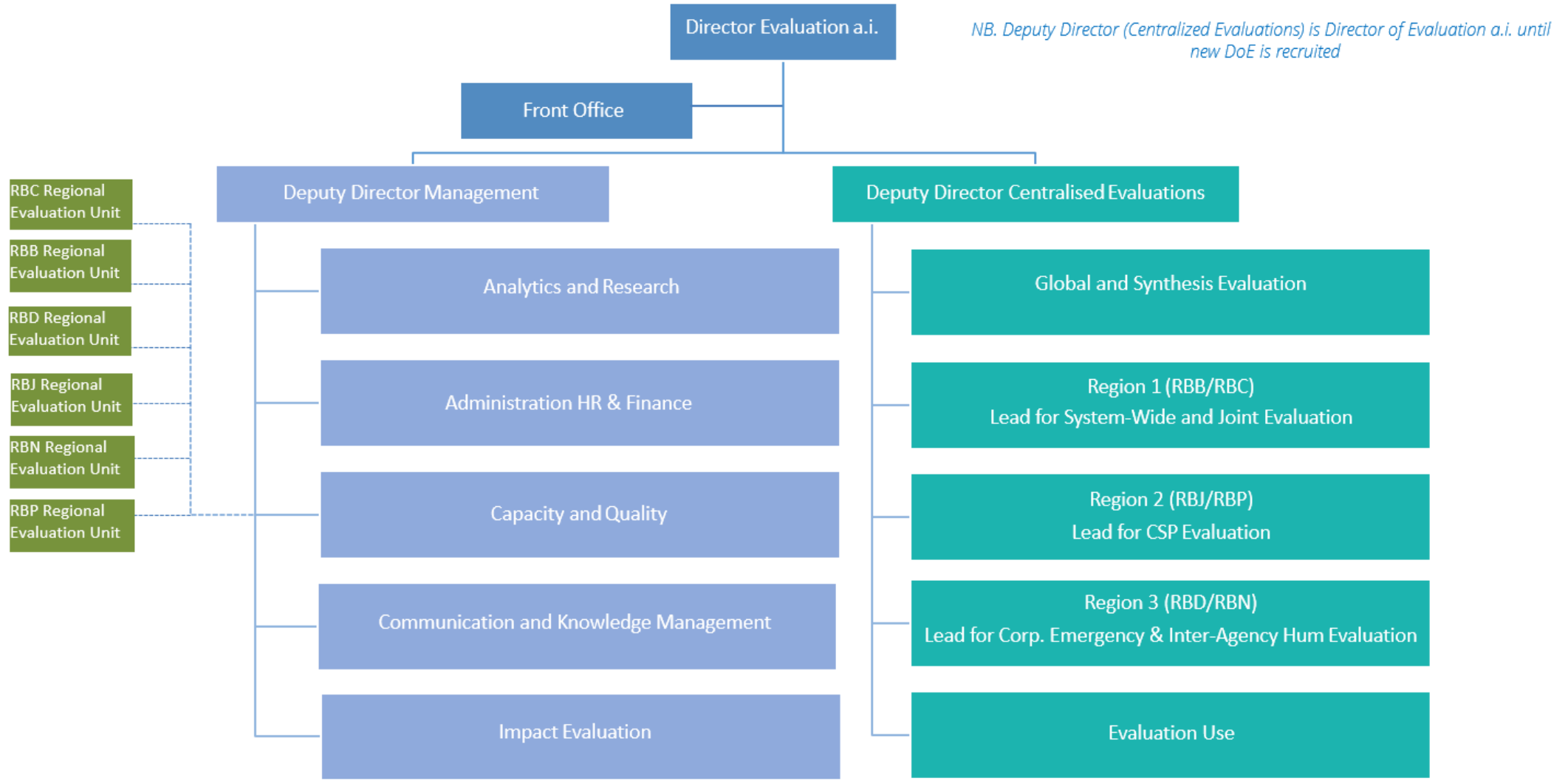
# OVERALL FUNDING SOURCES FOR THE EVALUATION FUNCTION 2022-24



# **HUMAN RESOURCE REQUIREMENTS 2024**

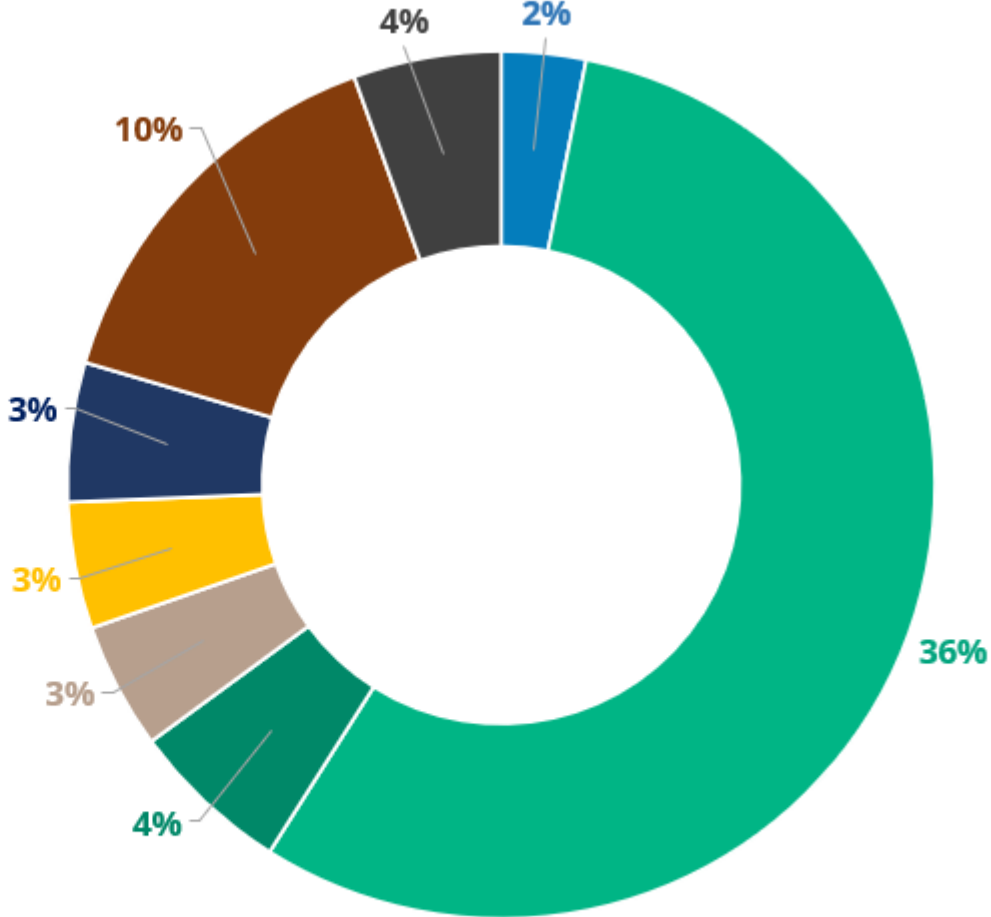


# EVALUATION FUNCTION – GLOBAL HQ (MAY 2023)



# OEV HUMAN RESOURCES ALLOCATED BY OUTCOME 2024

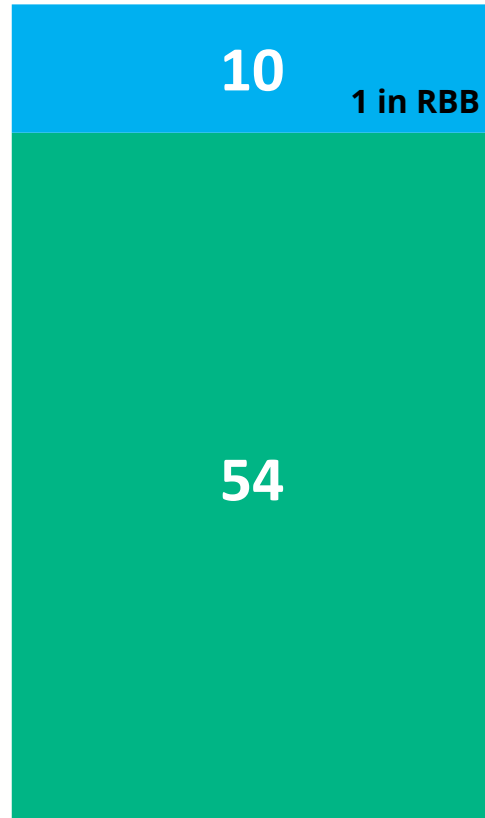
- Outcome 1**  
Independent, credible and useful evaluations
- Outcome 2**  
**Balanced and relevant evaluation coverage**  
OEV Centralized and Impact evaluations from PSA
- Outcome 2**  
**Balanced and relevant evaluation coverage**  
Impact Evaluation - Multi Donor Trust Fund
- Outcome 3**  
Evaluation Evidence systematically accessible and available
- Outcome 4**  
Capacity to commission, manage and use all types of evaluations
- Outcome 5**  
Partnerships strengthen environment for evaluation and UN coherence
- Cross-cutting: Normative Framework / Institutional Arrangements / Resources**
- Cross-cutting: Reporting**



# OEV HUMAN RESOURCES 2023 VS 2024

## STAFF ALLOCATION 2023

**TOTAL: 64**



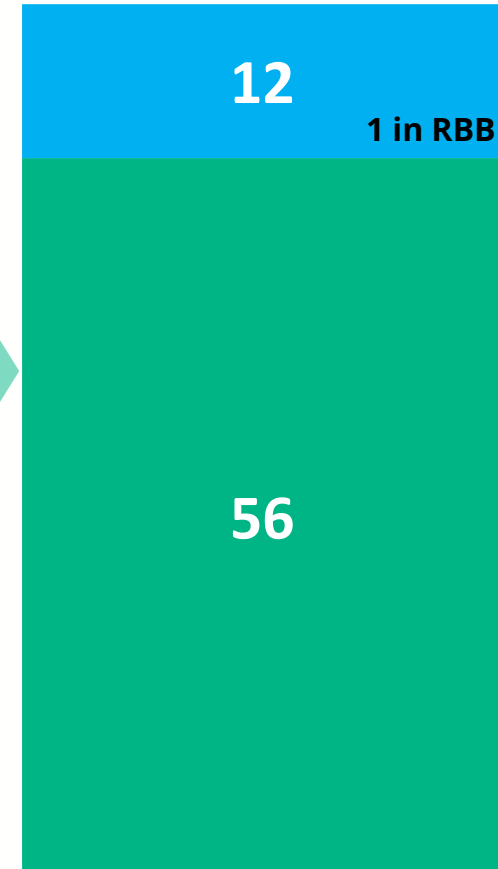
SHORT TERM / CONSULTANTS

1 New FT Post  
1 New LFT Post

FIXED TERM

## STAFF REQUIREMENT 2024

**TOTAL: 68**



# QUESTIONS ON RESOURCE REQUIREMENTS?