



World Food Programme

SAVING
LIVES
CHANGING
LIVES

Implementation of the 2017 Environmental Policy

Informal update to the Executive Board

November 2022

AGENDA

1. Policy context
2. Policy implementation
 - A. *Policy context*
 - B. *Policy implementation phases*
 - C. *WFP Environmental & Social Sustainability Framework*
 - D. *WFP Environmental footprint*
 - E. *Enabling conditions*
 - F. *Roll-out of Environmental Management System in offices*
 - G. *Supply chain*
 - H. *Programmes*
 - I. *Partners & Enterprise risk*
3. Funding & staffing
4. Next steps

POLICY CONTEXT

WFP CONTEXT

2017 Environmental Policy

Objectives:

- Enhance environmental sustainability of WFP activities and operations
- Reduce and manage environmental risks created by WFP activities and operations
- Reduce WFP's environmental footprint
- Build capacities of partners

Proposed tools:

- Standards, in line with best practices in UN system
- Risk screening of programme activities
- Environmental management system (EMS)

INTER-AGENCY CONTEXT

2007 UN Climate-Neutral Strategy

- Basis for emissions tracking and off-setting

2019 UN Sustainability Strategy – Phase I

- Commitments and targets for management functions

Greening the Blue

- Inter-agency reporting on emissions, water, waste

QCPR monitoring framework

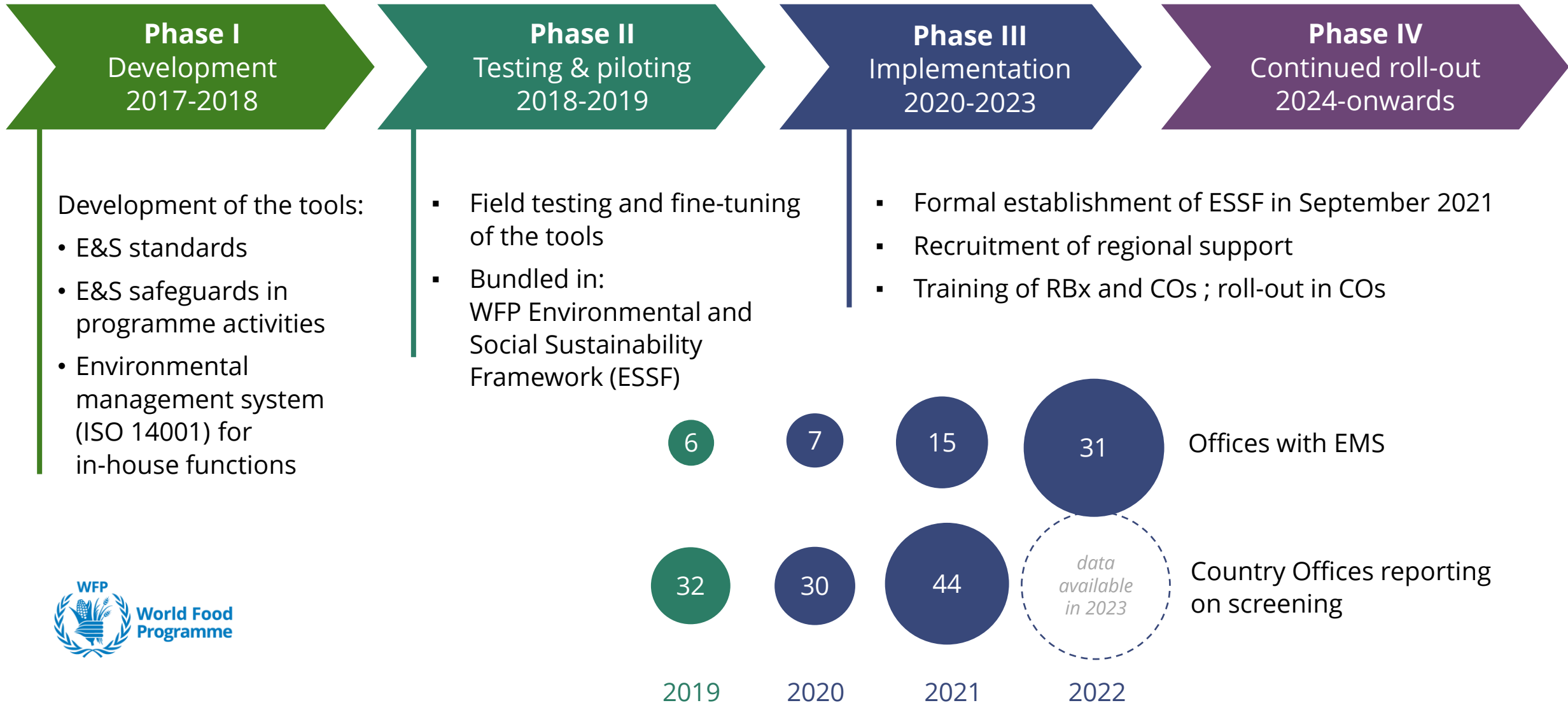
- Reporting to UN General Assembly on sustainability

Model Approach to E&S Standards

- Basis for WFP standards and safeguards



POLICY IMPLEMENTATION PHASES



WFP ENVIRONMENTAL & SOCIAL SUSTAINABILITY FRAMEWORK (ESSF)

ENVIRONMENTAL & SOCIAL STANDARDS

ENVIRONMENTAL MANAGEMENT SYSTEM

applied to in-house operations



Facilities



Human Resources



Information Technology



Travel



Emergency preparedness



Procurement



Logistics



INDEPENDENT OVERSIGHT FUNCTIONS

ENVIRONMENTAL & SOCIAL SAFEGUARDS

applied in programmes



Strategic risk assessment of CSPs



Risk screening of activities



Risk management plans



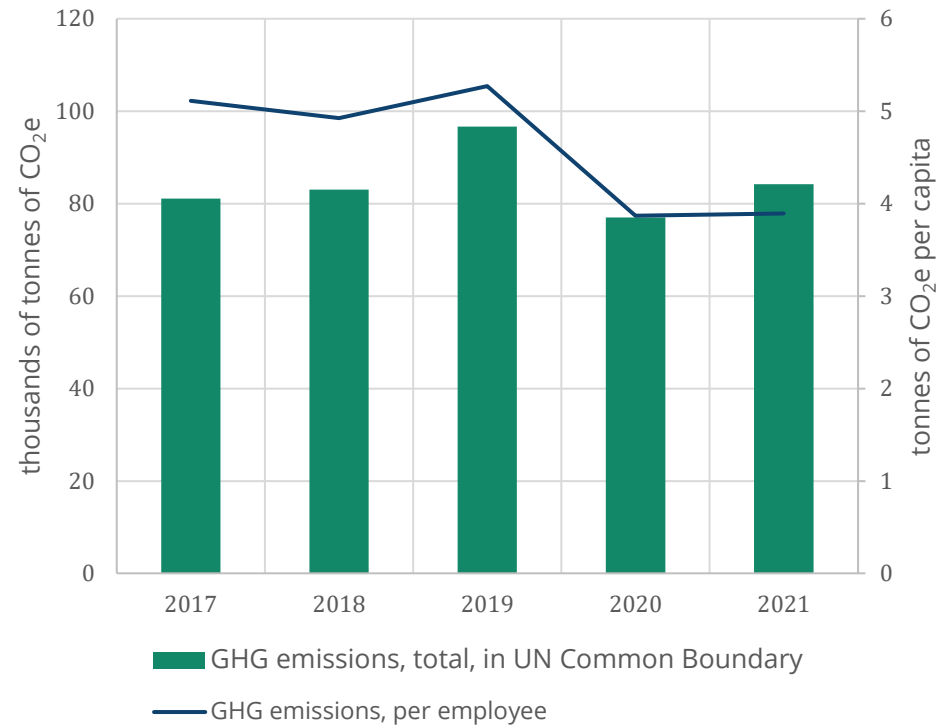
Community feedback mechanisms

WFP ENVIRONMENTAL FOOTPRINT

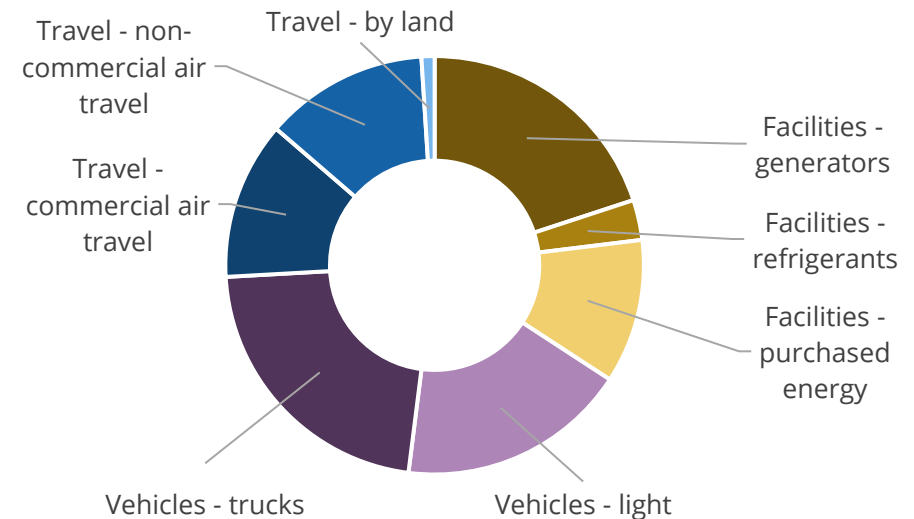
WFP EMISSIONS

Resulting from facilities, vehicles, travel – i.e. from the 'UN common boundary'
– as reported through *Greening the Blue*

trend in 2017-2021



breakdown of 2021 emissions



Note: WFP also reports on waste generation and water consumption in WFP facilities

ENABLING CONDITIONS

MAINSTREAMING IN MANUALS AND GUIDANCE

- Management services manual
- Goods & Services procurement manual
- Programme Guidance Manual
- Emergency Field Operations Pocketbook

MAINSTREAMING IN HR MANAGEMENT

- Training of employees and awareness raising
- Updating job profiles
- Updated *Code of Conduct*

MAINSTREAMING IN FACILITIES MANAGEMENT

- Long-Term Agreements, e.g. for recycling
- WFP Energy Efficiency Programme (EEP)

MAINSTREAMING IN PLANNING AND REPORTING

- WFP Strategic Plan 2022-2025
- Corporate Results Framework
- 2nd generation CSPs
- Annual Country Reports

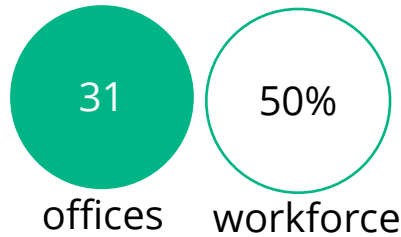


ROLL-OUT OF EMS IN OFFICES

EMS launch mission



as of Nov 2022



covered by EMS

EMS action plan:

- Objectives in different thematic areas
- Timeline
- Roles and responsibilities

energy



waste



water



sustainable procurement



awareness & training





Video
Environmental Management

SUPPLY CHAIN – 1

WFP AVIATION

- Aviation Service Environmental and Sustainability Programme (*we measure, we reduce, we offset*)
- Environmental KPIs established and CO₂ emissions
- Environmental clauses in agreements with air operators, ground handling, fuel providers
- Waste management procedures aligned with international best practices

WFP GLOBAL FLEET

- Training on eco-driving and vehicle maintenance
- Tracking and monitoring through GPS system for accuracy of CO₂ emission calculation and implementation of fuel-efficiency measures
- Global Fleet Hazardous Waste Management Booklet

WFP SHIPPING

- Rigorous vetting of all chartered ships for compliance with international standards
- Switching to low-sulphur fuel across its fleet as required by IMO standards

SUPPLY CHAIN – 2

PROCUREMENT

- Procurement Manual which includes a repository of sustainability criteria and specifications for purchased goods and services
- Substantial increase in local and regional procurement
- 100% of palm oil procured by HQ is RSPO certified; 87% certified as fully sustainable

PACKAGING

- Testing new solutions with ICRC and UNHCR for alternatives to polypropylene bags
- Partnership with Mondi to enhance packaging solutions
- Joint Initiative for Sustainable Humanitarian Packaging Waste Management

SCOPE-3 EMISSIONS

- Analysis of applicability of different methodological approaches and tools to measure scope-3 emissions
- Pilot scope-3 emissions study in RB Nairobi
- Preliminary discussion with other UN and humanitarian actors for alignment on scope-3 standards

PROGRAMMES

ENVIRONMENTAL & SOCIAL SAFEGUARDS

Awareness and training

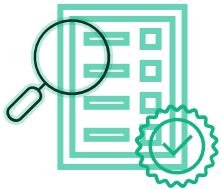


- 109 trainings provided to Regional Bureaux and Country Offices
- Over 1000 participants reached
- Higher outreach in regions with regional safeguards advisor

43
COUNTRY
OFFICES

6
REGIONAL
BUREAUX

Uptake in programmes



- In 2021, 44 COs reported on screening
- Increase in number of screened CSP activities, yet still below target
- Screening is prevalent in asset creation activities and climate adaptation activities

44
COUNTRY
OFFICES

PARTNERS & ENTERPRISE RISK

AGREEMENTS WITH PARTNERS

- Field Level Agreement (FLA) template integrates WFP's standards and safeguards compliance requirements
- Tender processes for construction contracts started including WFP's standards and safeguards
- ESSF positioned in agreements with bilateral and multilateral donors for sustainability of programme activities



ENTERPRISE RISK MANAGEMENT



- By design, the ESSF is aligned with the '3 lines model' of enterprise risk management
- Major environmental/social risks can be included in risk registers



World Food
Programme

WFP SUSTAINABILITY

Video *Safeguards in programmes*



FUNDING & STAFFING

- In 2017, the policy was presented to the EB *without* a costed implementation plan
- In 2017-2021, the cost of the implementation of the policy was borne mainly by *extrabudgetary* (non-PSA) funding
- In 2022, most employees are covered by the Management Plan
- In 2023, the Critical Corporate Initiative (a one-off investment), will support mainstreaming safeguards as cross-cutting priority
- In 2024, key positions in the six regional bureaux and at HQ need to be mainstreamed and funded from PSA budget



NEXT STEPS

WFP ENVIRONMENTAL PLAN OF ACTION 2030 ('EPACT')

Finalize EPACT with commitments and targets based on UN Sustainability Strategy. Examples of commitments:

- Overall GHG emissions from UN common Boundary: -45%
- Corporate waste tracking system for food packaging, e-waste, and other major waste streams
- Elimination of the open burning of waste in all locations

EMISSIONS OUTSIDE 'UN COMMON BOUNDARY'

In collaboration with ICRC and other actors, explore if, and how, to estimate emissions from all 'scopes'

ENVIRONMENTAL AND SOCIAL SAFEGUARDS

Safeguards effectively incorporated in all programme areas; support structure operational

EVALUATION OF THE POLICY

Policy up for evaluation in 2023-2024, to be confirmed by Office of Evaluation



Time for Q&As



ACRONYMS

CO	Country Office
CSP	Country Strategic Plan
EEP	WFP Energy Efficiency Programme
EMS	Environmental Management System
ESSF	WFP Environmental and Social Sustainability Framework
FLA	Field Level Agreement
GPS	Global Positioning System
HR	Human Resources
ICRC	International Committee of the Red Cross
IMO	International Maritime Organization
ISO	International Organization for Standardization
IT	Information Technology
KPI	Key Performance Indicator
RB	Regional Bureau
RSPO	Roundtable on Sustainable Palm Oil
UNHCR	United Nations High Commissioner for Refugees

