



Update on the regional and country-level implementation of the policy on protection and accountability

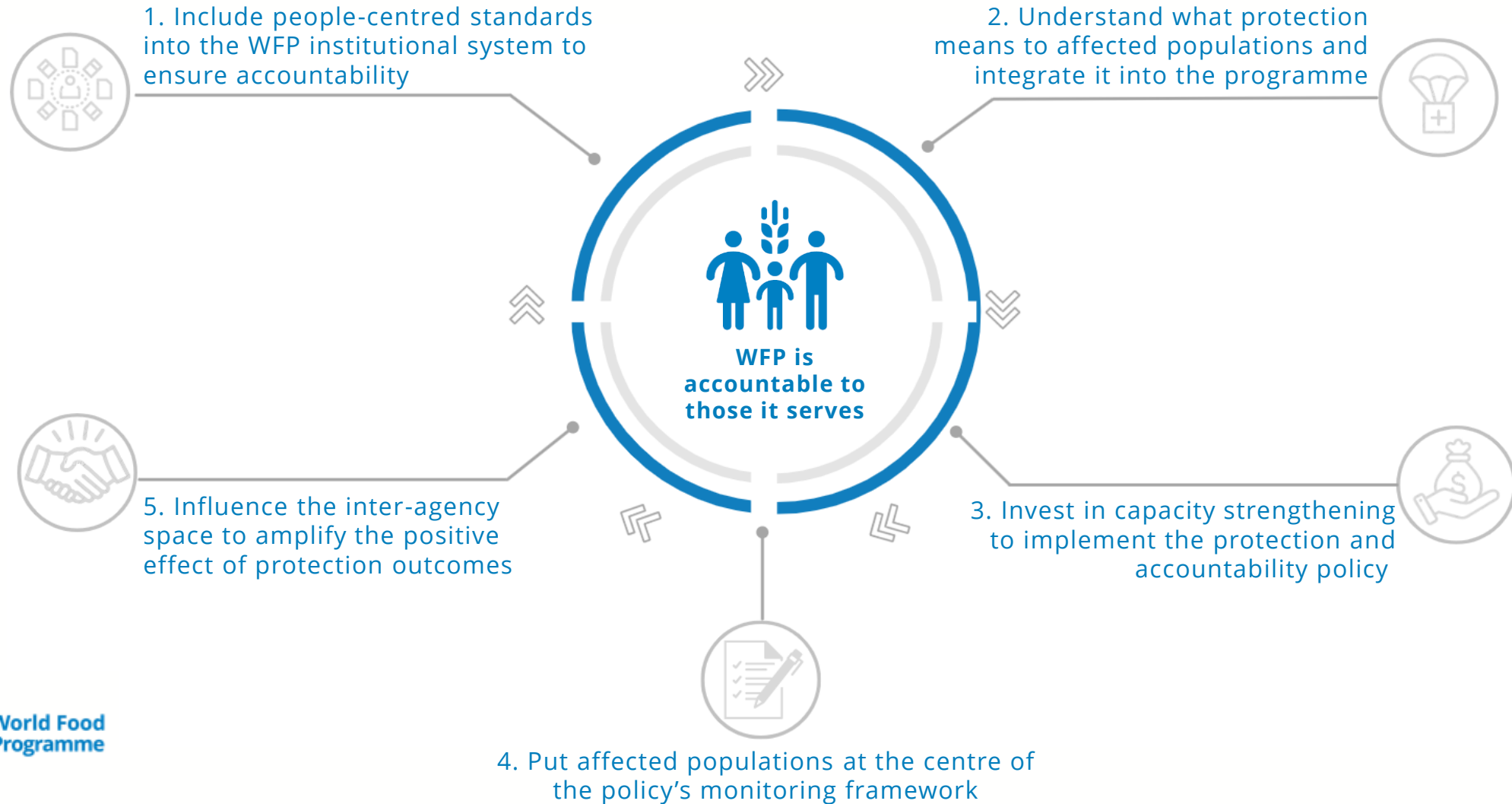
2022 July



World Food Programme

SAVING
LIVES
CHANGING
LIVES

WE MADE EFFORTS TO

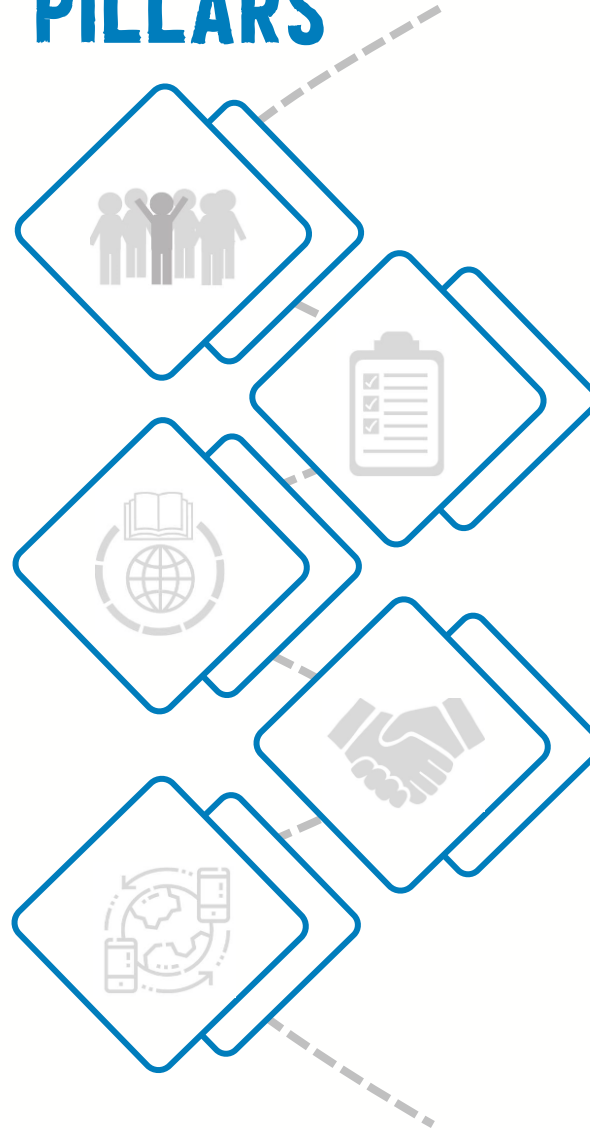


IMPLEMENTATION PLAN PILLARS

1. Leadership & institutional set-up and processes: ownership, direction, and support by WFP leaders at the global, regional and country levels.

3. Capacity development: staff at all levels need a shared understanding of how protection is relevant to their work.

5. Advocacy & communications: inside and outside WFP, affected persons need platforms to voice their views and concerns regarding decisions that affect their lives.



2. Planning & programming: translation of the protection and accountability policy norms and standards into programming frameworks.

4. Partnership & accountability: protection actors and entities are essential to ensuring complementarity in achieving protection outcomes

1. INCLUDE PEOPLE-CENTRED STANDARDS INTO THE WFP INSTITUTIONAL SYSTEM TO ENSURE ACCOUNTABILITY

WFP Corporate strategic plan
(2022-2025)

Save and change lives
safely

Policy coherence

Inclusion



Second-generation country strategic plans mainstreamed protection, accountability, and conflict sensitivity.

Significant improvements: time & consultation with communities.

IMPLEMENTATION PLAN PILLARS

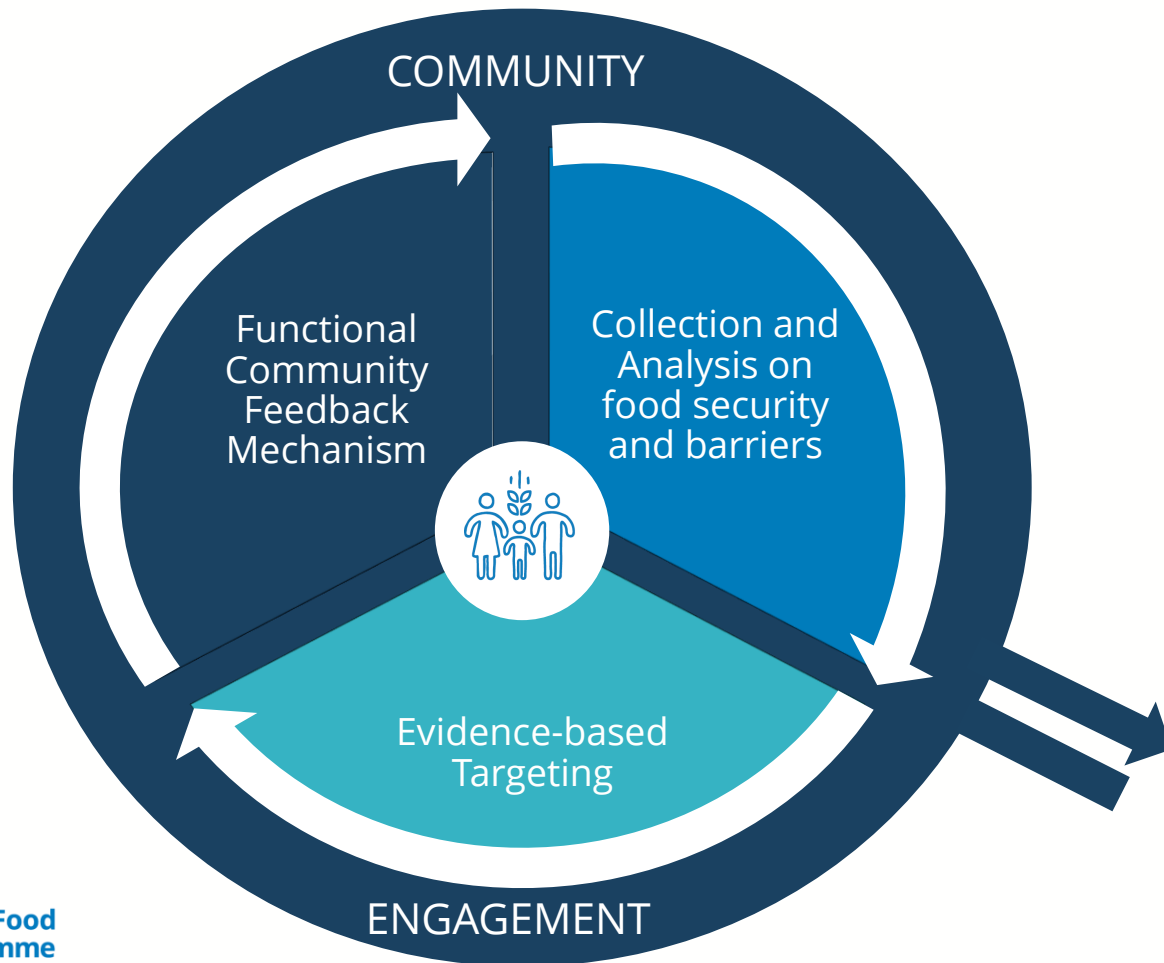


1. Leadership & institutional set-up and processes



3. Capacity and Development

2. UNDERSTAND WHAT PROTECTION MEANS TO AFFECTED POPULATIONS AND INTEGRATE IT INTO PROGRAMMING



IMPLEMENTATION PLAN PILLARS



1. Leadership & institutional set-up and processes



2. Planning & Programming



3. Capacity and Development

Reach the most vulnerable, increase transparency, fairness, and better use of resources.

Locally and culturally relevant programmes

Listen, understand and respond to the affected population

3. INVEST IN CAPACITY STRENGTHENING TO IMPLEMENT THE PROTECTION AND ACCOUNTABILITY POLICY



Headquarters

Function-based model integrates thematic content to deliver support across the programme cycle to regions and countries



Regional Bureaux

1st line of defence, identify priorities and entry points for HQ support



Country Offices

Supporting policy implementation, but more dedicated resources required

IMPLEMENTATION PLAN PILLARS



1. Leadership & institutional set-up and processes



2. Planning & Programming



3. Capacity and Development

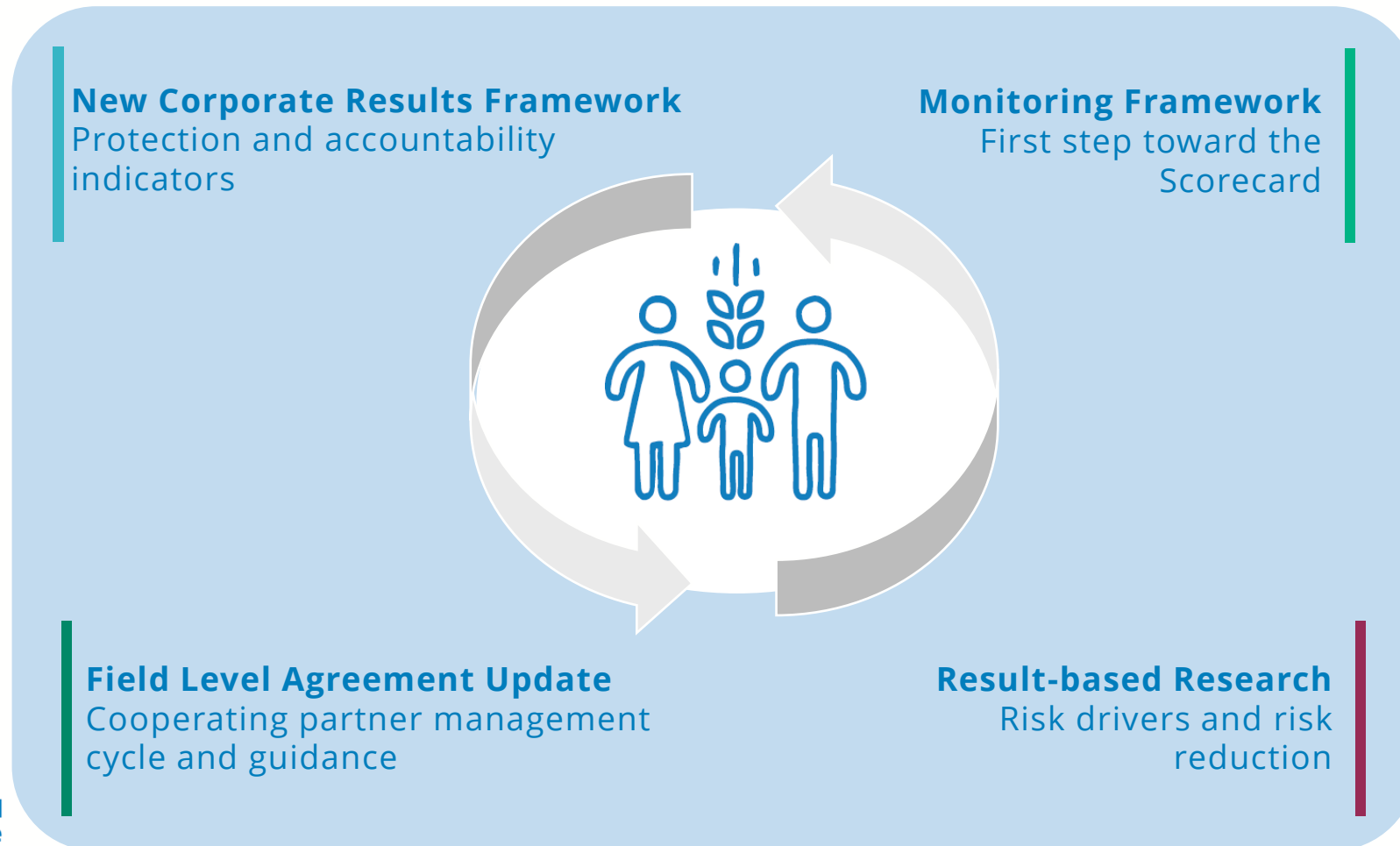


4. Partnership & Accountability



5. Communication & Advocacy

4. PUT THE AFFECTED POPULATIONS AT THE CENTRE OF THE POLICY'S MONITORING FRAMEWORK



IMPLEMENTATION PLAN PILLARS



1. Leadership & institutional set-up and processes



2. Planning & Programming



3. Capacity and Development



3. Partnership & Accountability

5. INFLUENCE THE INTER-AGENCY SPACE TO AMPLIFY THE POSITIVE EFFECT OF PROTECTION OUTCOMES

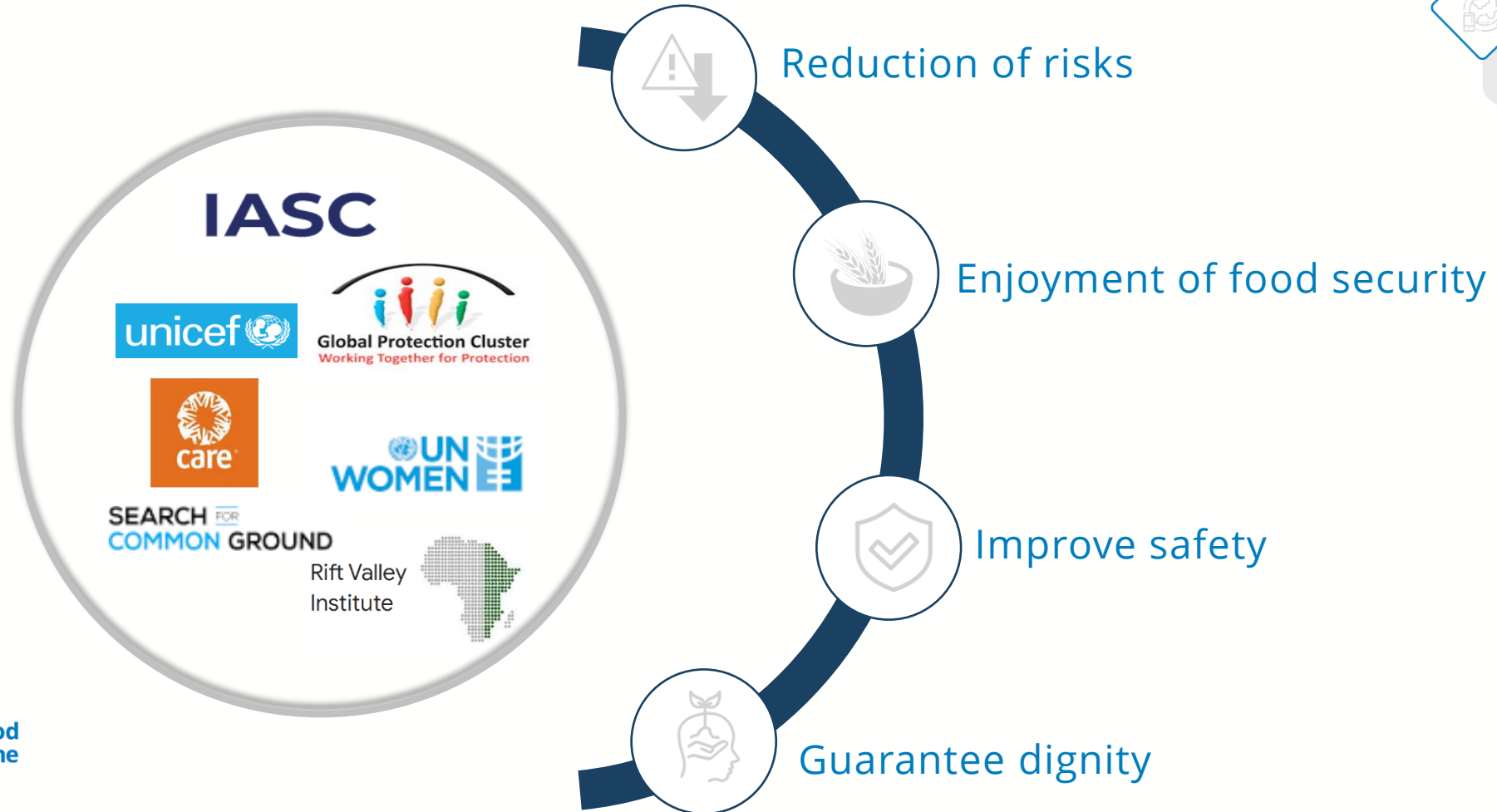
IMPLEMENTATION PLAN PILLARS



4. Partnership & Accountability



5. Communication & Advocacy



CHALLENGES

1



TIME

To understand if efforts have improved the quality and equity of access to WFP interventions

2



CULTURAL CHANGE

To redefine success as a move away from numbers and coverage toward inclusion

3



HARMONIZED ANALYTICAL FRAMEWORK

To give decision-makers a holistic view of risks, needs and fears

4



ANALYSIS AND DIGITAL SOLUTIONS

To support the formulation of evidence-based and actionable recommendations

5



PARTNERSHIP WITH LOCAL ORGANISATIONS

To ensure an inclusive and harmonised approach to implementation

6



PROTECTION-CENTERED TARGETING

To reach those most exposed to vulnerability and risk

7



MULTI-YEAR FUNDING AND HUMAN RESOURCES

To guarantee that protection is mainstreamed into programming

Thank you for your time and attention