



World Food Programme

SAVING LIVES
CHANGING LIVES

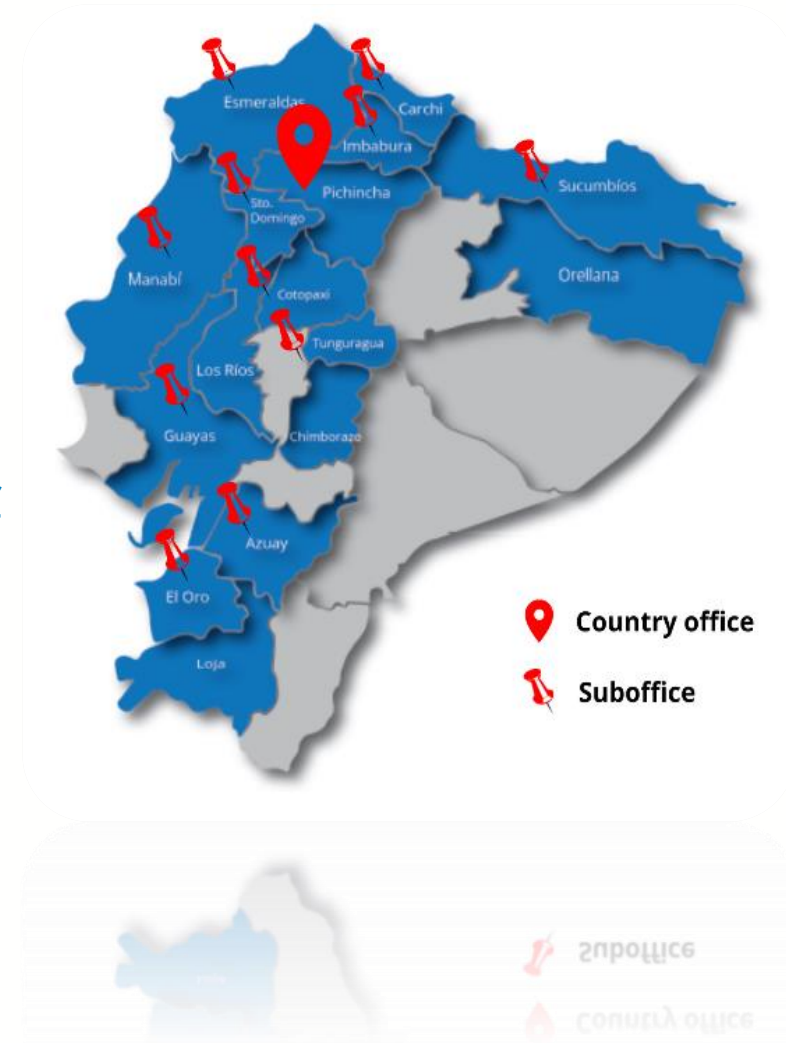
Ecuador Country Strategic Plan 2023-2027

INFORMAL CONSULTATION

26 July 2022

CONTEXT

- **Surface area:** 256.4 sq. km (around the same size as Italy)
- **Population:** 17.6 m
- **Income level:** Upper middle income
- **Poverty:**
 - **National level:** 27.7% - 4.4 m people – 10.5% extreme poverty
 - **Rural areas:** 42.4% - 2.9 m people
- **Chronic malnutrition:**
 - **under 5 years of age:** 1 out of 4 children; 2nd highest rate in LAC
 - **under 2 years of age:** 27.2% national level and 30.5% rural areas
- **Food Security:** 2.4 m severe food insecure people
- **Venezuelan migration:** 522,000 people
- **GINI Index:** 0,474



TRANSITION STRUCTURE

Transition leading to more sustained impact and integration of our CSP in line with CSP evaluation recommendations.

Strategic outcomes CSP 2017-2022



1 Access to food

2 Support smallholder farmers

3 Climate change and resilience

4 Capacity Strengthening

5 Logistics coordination

Strategic outcomes CSP 2023-2027



1 People are better able to meet their urgent food and nutrition needs

2 People have better nutrition, health & education outcomes

3 People have improved & sustainable livelihoods

4 Humanitarian & development actors are more efficient & effective

STRATEGIC ALIGNMENT



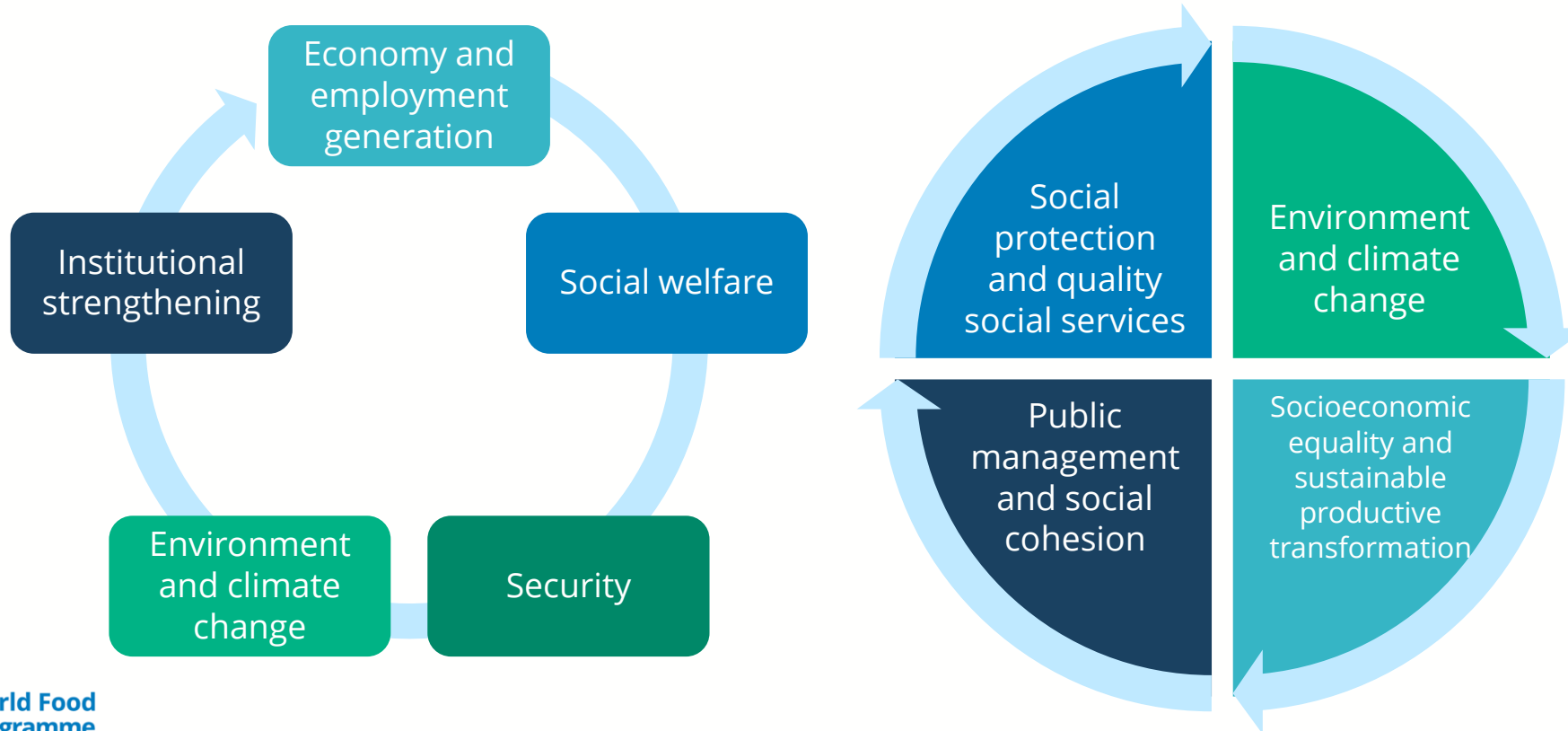
Government's national development plan
"Creating Opportunities
2021-2025"



The United Nations Sustainable
Development Cooperation
Framework
(UNSDCF) 2022-2026



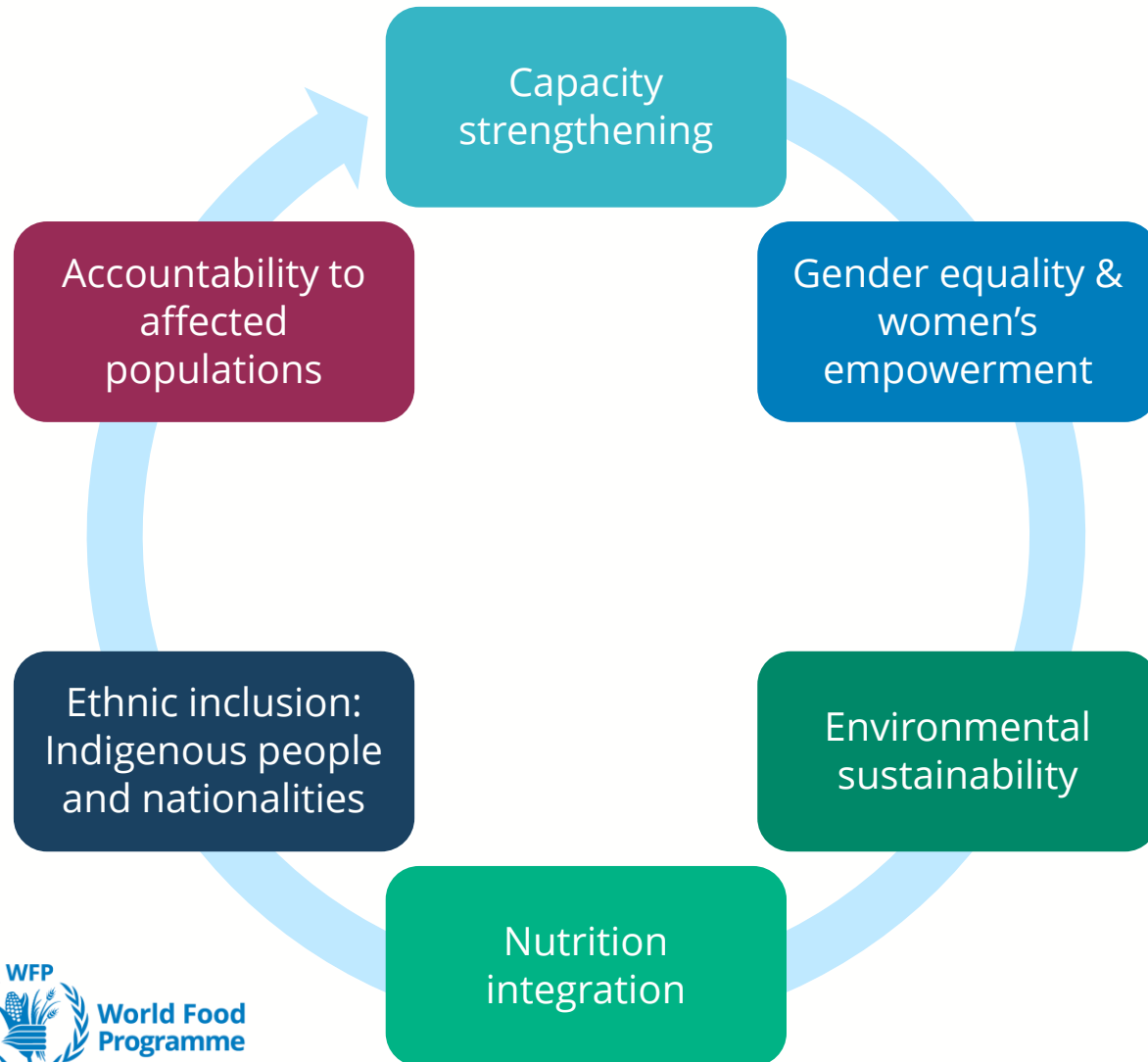
Ecuador
Country Strategic
Plan
(2023-2027)



ECUADOR CSP 2023–2027

SDG TARGET/ STRATEGIC OUTCOME	ACCESS TO FOOD: SO 1	END MALNUTRITION: SO 2	SUSTAINABLE FOOD SYSTEM: SO 3	PARTNERSHIPS FOR THE GOALS: SO 4
WFP FOCUS AREA	CRISIS RESPONSE	ROOT CAUSES	RESILIENCE BUILDING	RESILIENCE BUILDING
ACTIVITIES	1 UNCONDITIONAL RESOURCE TRANSFER	3 SOCIAL PROTECTION SECTOR SUPPORT	4 ACTIONS TO PROTECT AGAINST CLIMATE SHOCKS	5 ON-DEMAND SERVICES
	2 EMERGENCY PREPAREDNESS AND EARLY ACTION			
UNIQUE DIRECT BENEFICIARIES	520,169	76,830	80,490	176
TARGET BENEFICIARIES	PEOPLE IN HUMAN MOBILITY, INDIGENOUS PEOPLE, PEOPLE WITH DISABILITIES, OLDER ADULTS, LGBTI+ PEOPLE, AND WOMEN WHO ARE VICTIMS OF TRAFFICKING OR VIOLENCE	SCHOOL-AGE GIRLS AND BOYS, & ADOLESCENTS PREGNANT AND LACTATING WOMEN, INDIGENOUS PEOPLE, NATIONAL AND LOCAL INSTITUTIONS	INDIGENOUS PEOPLE AND NATIONALITIES WOMEN AND YOUTH NATIONAL AND LOCAL INSTITUTIONS	NATIONAL AND LOCAL INSTITUTIONS HUMANITARIAN AND DEVELOPMENT PARTNERS
TOTAL BUDGET USD 144.4 M	USD 77.6 M	USD 36.6 M	USD 21.6 M	USD 8.6 M

CROSS-CUTTING PRIORITIES



ENABLERS

PEOPLE 

PARTNERSHIPS 

FUNDING 

EVIDENCE 

TECHNOLOGY 

INNOVATION 

Thank you.



26 July 2022