



World Food Programme



SAVING  
LIVES  
CHANGING  
LIVES

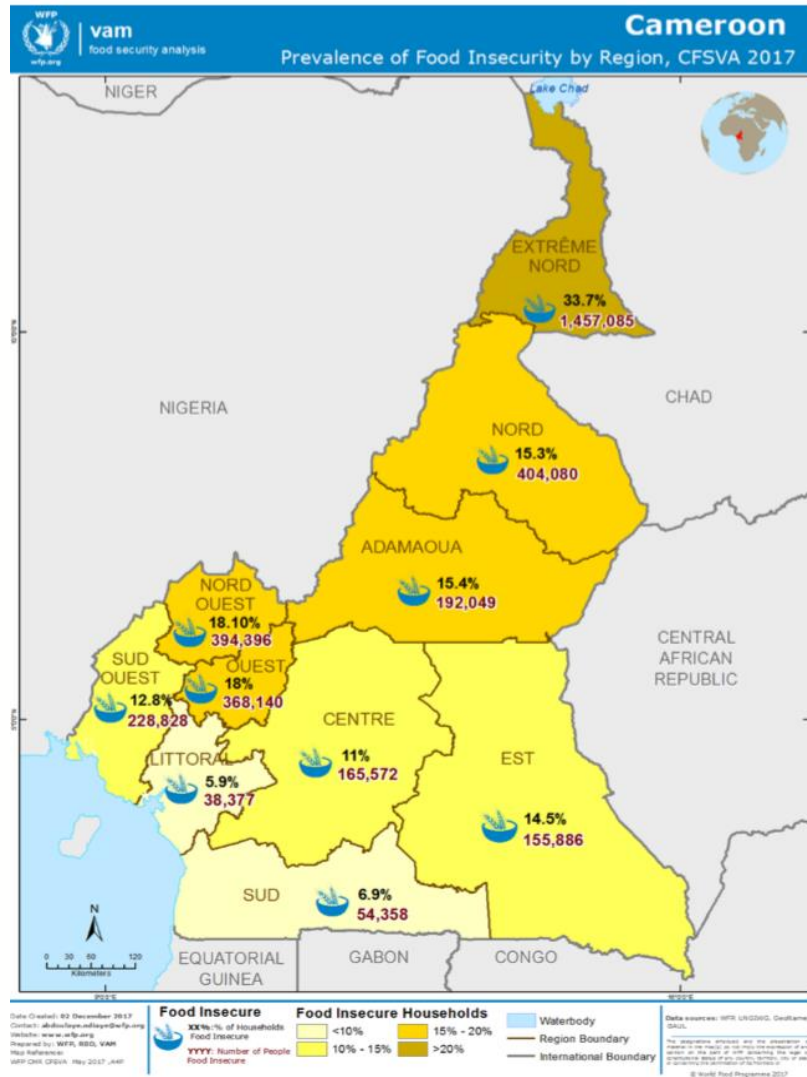
# Cameroon Country Strategic Plan 2022-2026

## Executive Board Informal Consultation

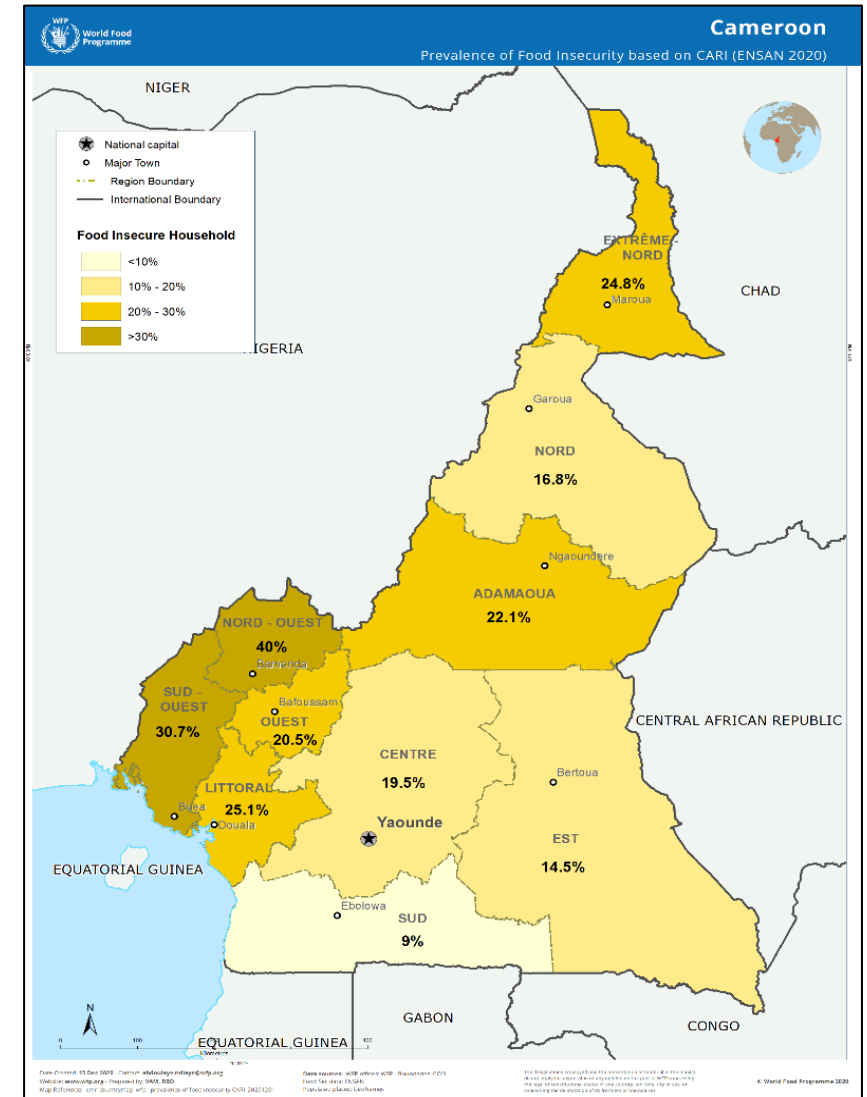
10 December 2021

# Food security and nutrition

2017



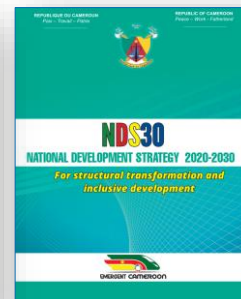
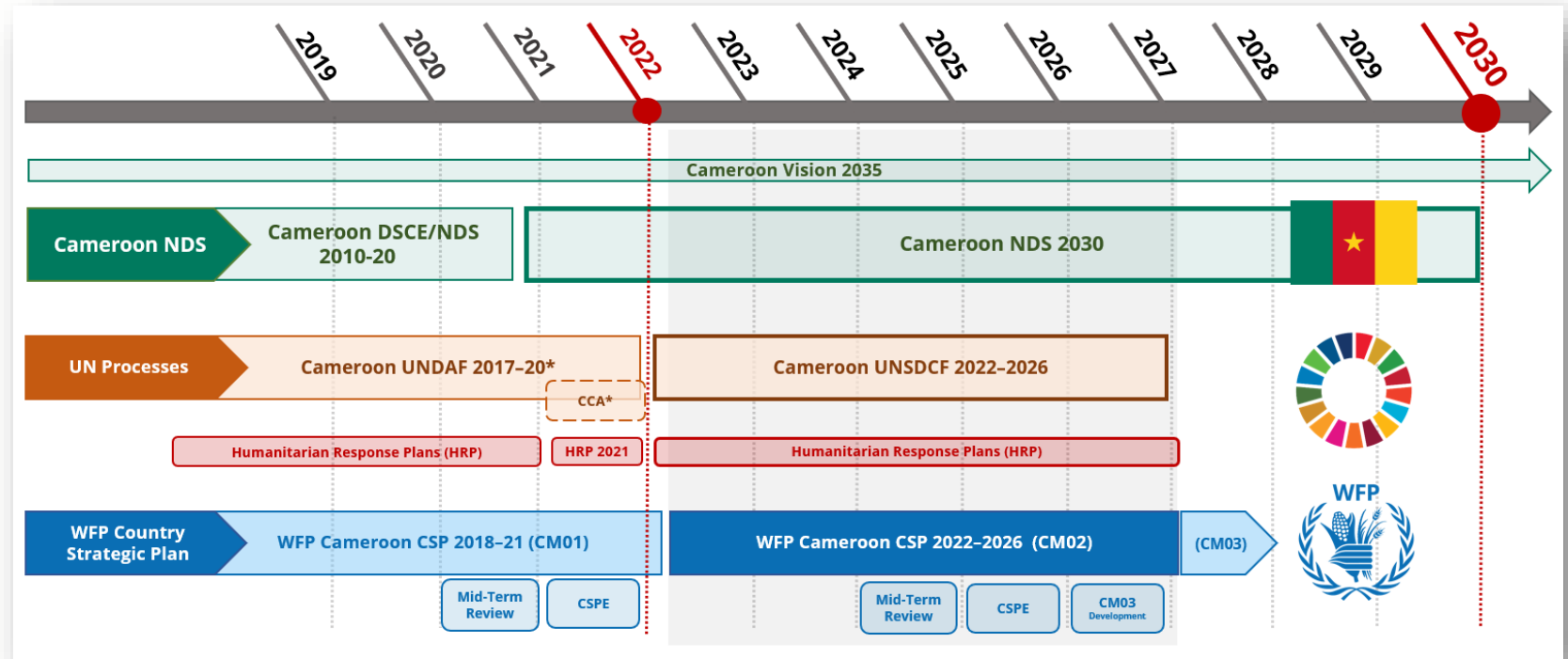
2020



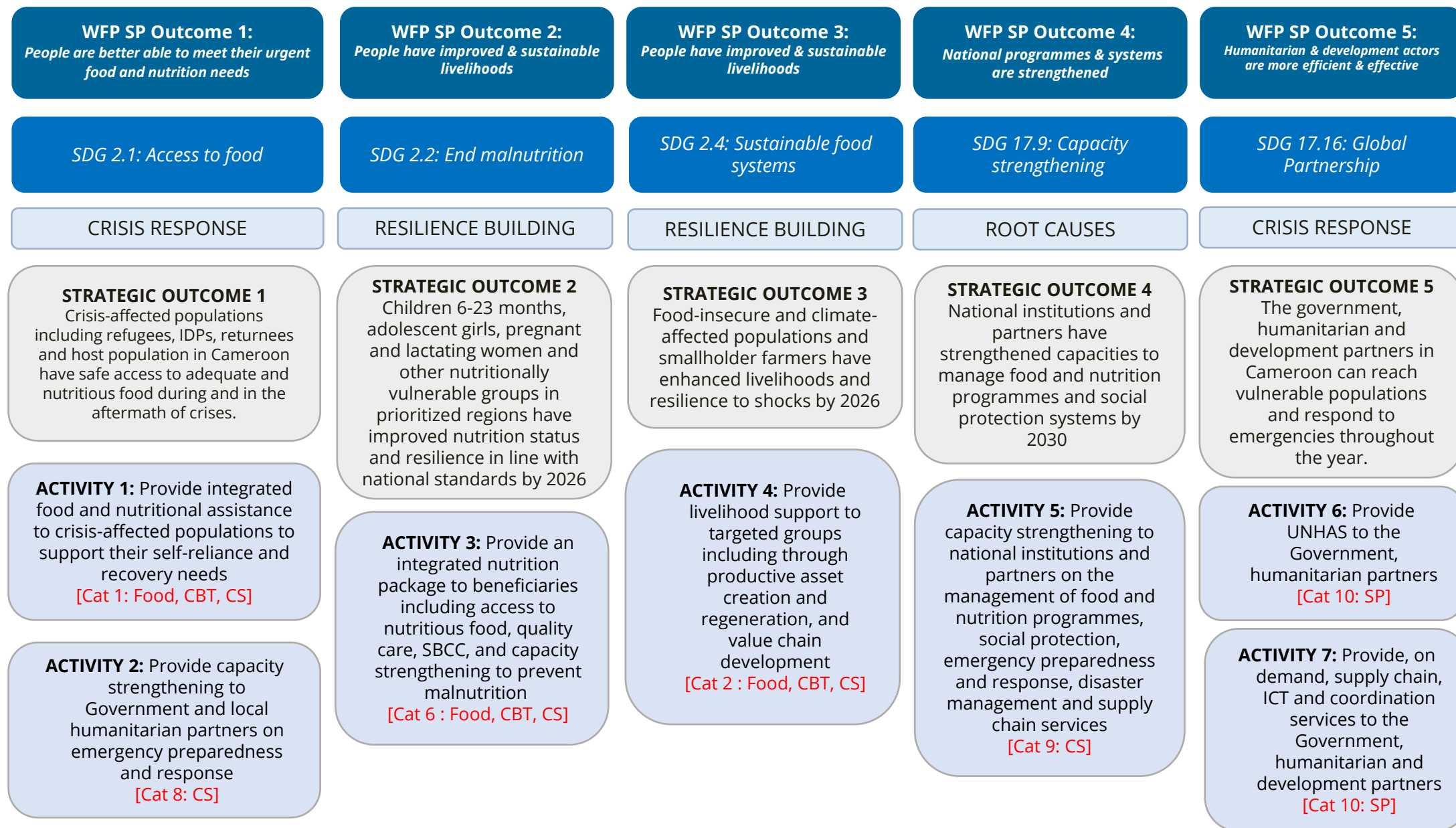
# Strong alignment, robust evidence, broad consultation

## Key CSP inputs

- **CSP aligns** with NDS30, SDGs, HRP, UNSDCF, and WFP's Strategic Plan
- **CSP informed** by the CCA, CSP Evaluation, MTR, M&E WFP evidence, CO analysis, trends; RB & HQ missions
- **Feedback** from Govt, UN partners, donor consultations; CFM from beneficiaries, affected communities



# WFP Cameroon CSP 2022-26: 1.6m beneficiaries, USD 730m



# What's different: Key changes from 1G CSP to 2G CSP

## Country context changes

- **Rising needs (L2)**, access challenges; Increasing food insecurity – esp. NW/SW, and Far North
- CAR **refugee** influx, Nigerian refugee repatriation
- **COVID-19 impact**
- New National Development Strategy (2020-2030)
- **New UN Cooperation Framework (2022-2026)**
- Funding challenges / pipeline breaks

## Programme changes

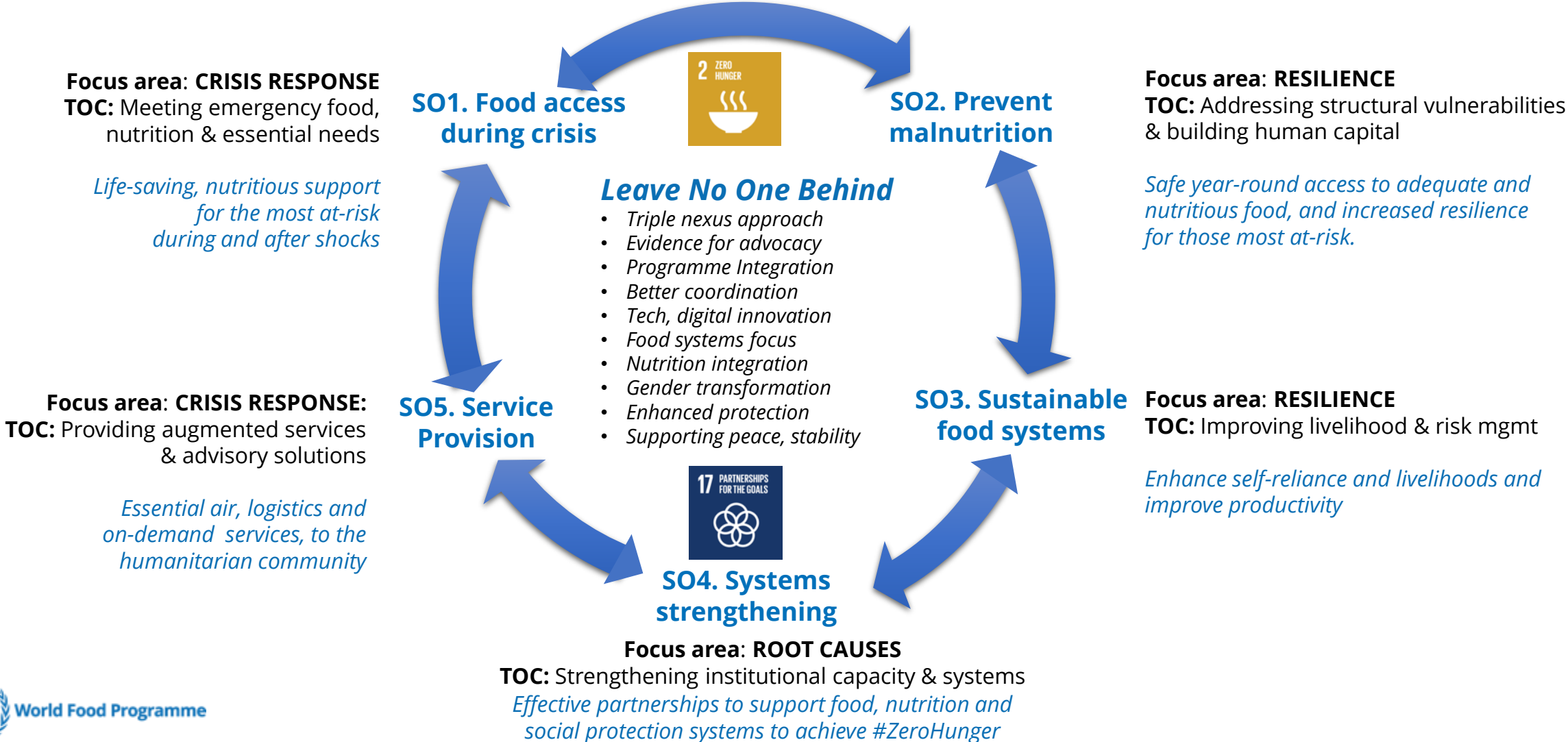
- **Transition relief beneficiaries to recovery and resilience activities**
- **Increased resilience activities** including HGSF, support to SHF, livelihoods
- **Capacity strengthening** for EPR (SO1), resilience to support social protection, FSN analysis (CH)
- Use of humanitarian platform to deliver **safety nets**
- Increased use of **CBT** & digital solutions
- Improved **partnership** with Government, UN, **IFIs**, CPs for SDG2
- **Better coordination** with all stakeholders

## Strategic changes

- **Holistic approach across triple nexus** (incorporating conflict and climate change analysis)
- **Food systems focus, nutrition integration**
- **Programme integration**
- **Analysis/evidence generation** for better programme design and advocacy
- **Innovation** in digital transformation (esp. CBT and financial inclusion)
- **Cross cutting concerns:** nutrition, gender, protection, DI, AAP, environmental sustainability
- **Shift from an actor to an enabler...** Transition to CM03 and 2030 horizon

# Cameroon CSP 2022-26

Linking emergency response to sustainable, resilient food security with an integrated package of shock-responsive food and nutritional activities



# Partnerships



OUR APPROACH: WFP Cameroon works together with national and local governments, United Nations agencies, IFIs, private sector and with the communities that we serve – which are critical to build sustainability, peace and stability

-  Government and line ministries are our key partners
-  Joint programmes with UN agencies to build human capital and resilience
-  Private sector linkages and a network of more than 21 cooperating partners
-  Innovative solutions for improved value chains and strengthened food systems
-  Building Government systems and pathways to peace and inclusive development
-  Serving communities and empowering vulnerable groups



Thank you